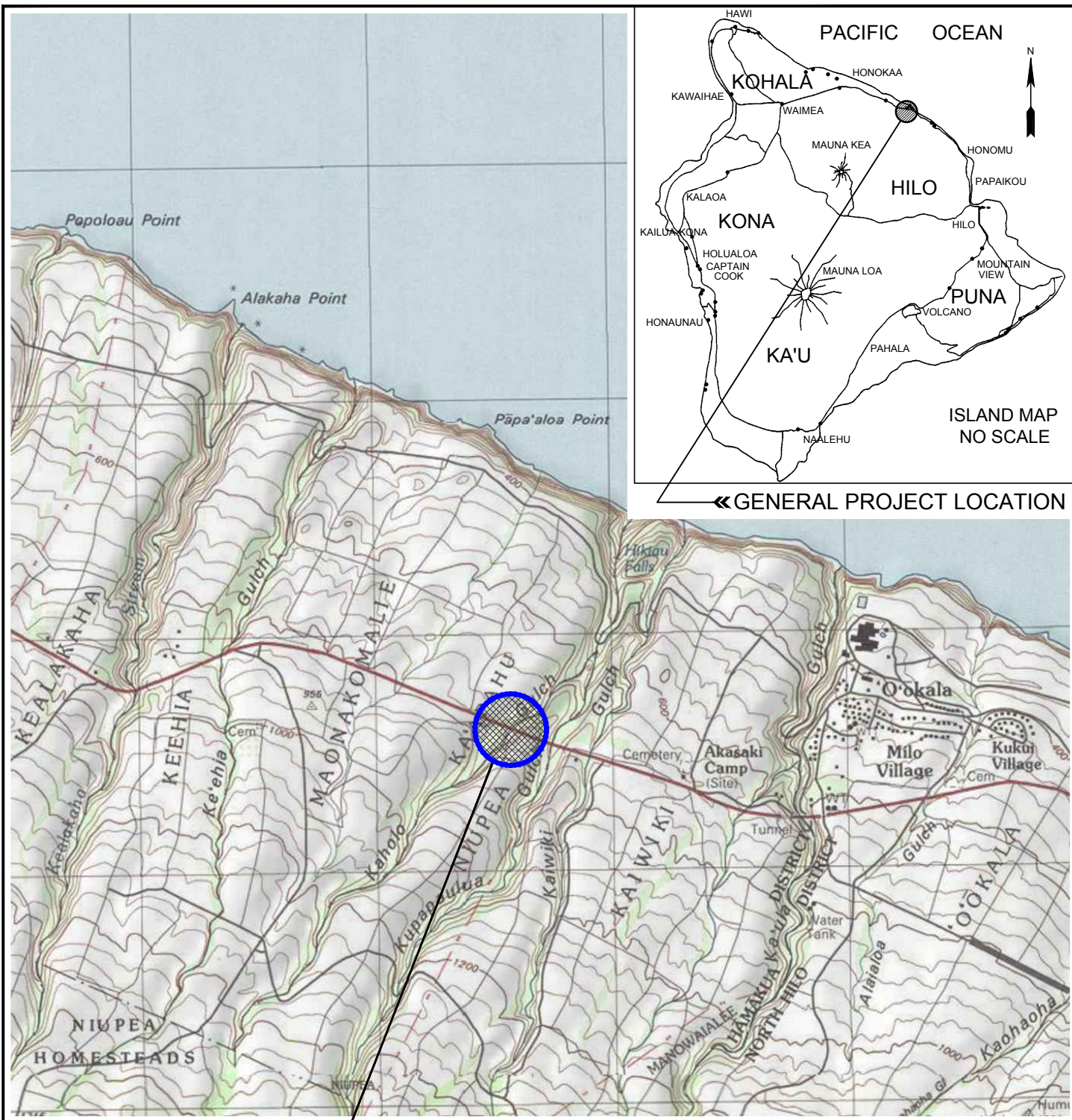


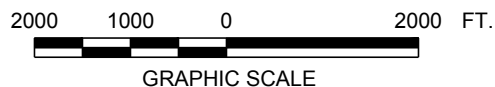
CAD User: HENRY File Last Updated: August 04, 2021 11:00:16pm Plot Date: August 04, 2021 - 11:08:36pm
 File: A:\Drafting\Working\8063-00_Kaholo_Bridge\8063-00PLM.dwg\PLM
 Plotter: DWG To PDF-Geo.pc3 Plotstyle: GEO-No-Dithering-Blue-Boring.ctb



PROJECT LOCATION»

PROJECT LOCATION MAP

SEISMIC RETROFIT OF KAHOLO BRIDGE
 HAWAII BELT ROAD, PROJECT NO. BR-019-2(072)
 DISTRICT OF HAMAKUA, ISLAND OF HAWAII



REFERENCE: MAP CREATED WITH TOPO!® ©2010 NATIONAL GEOGRAPHIC, ©2007 TELE ATLAS, REL. 1/2007.



GEOLABS, INC.

Geotechnical Engineering

DATE	DRAWN BY	PLATE
AUGUST 2021	HYC	
SCALE	W.O.	
1" = 2,000'	8063-00	1