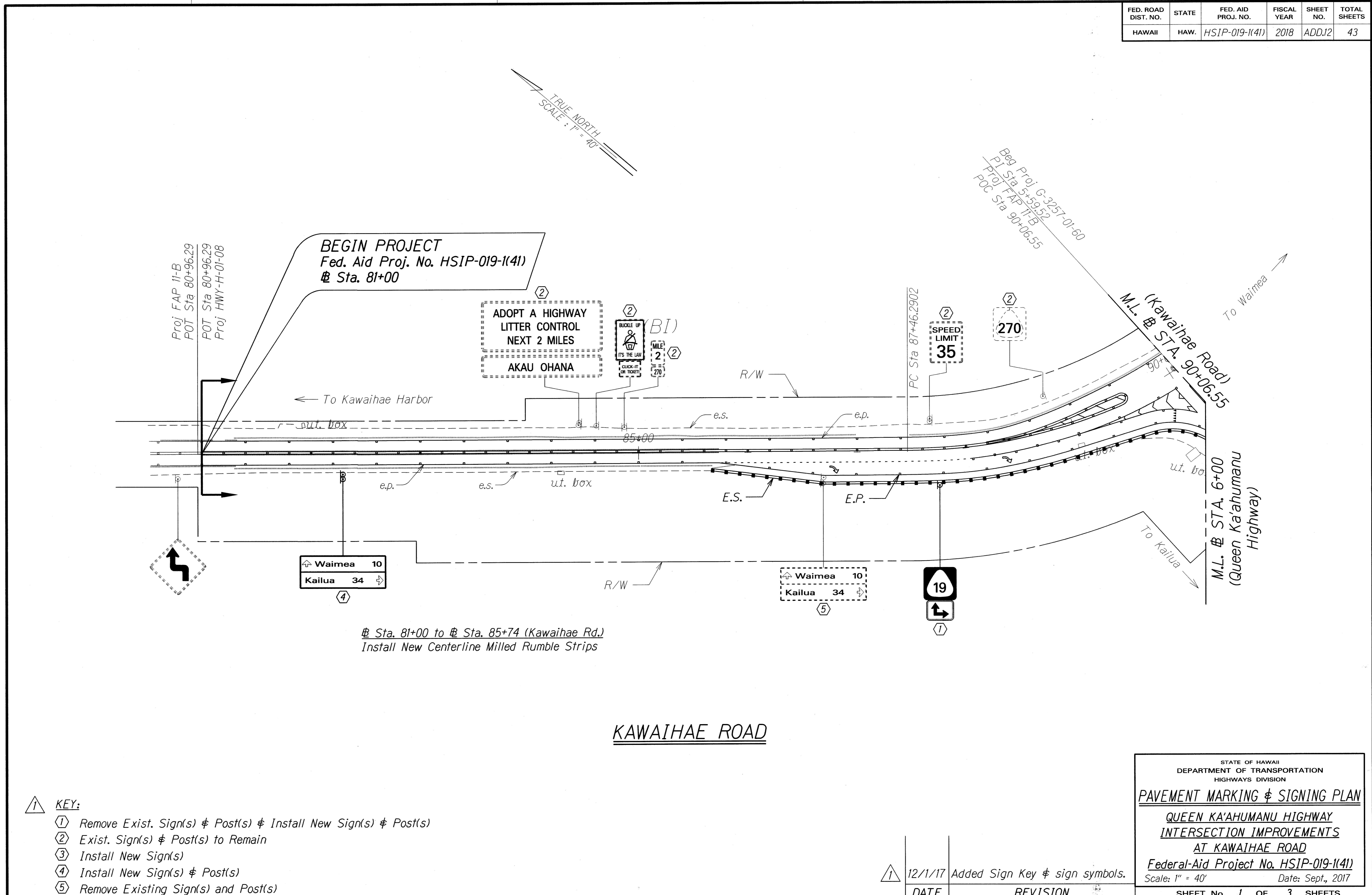


FED. ROAD DIST. NO.	STATE	FED. AID PROJ. NO.	FISCAL YEAR	SHEET NO.	TOTAL SHEETS
HAWAII	HAW.	HSIP-019-1(41)	2018	ADD.12	43



@ Sta. 81+00 to @ Sta. 85+74 (Kawaihæ Rd.)
Install New Centerline Milled Rumble Strips

KAWAIHÆ ROAD

- KEY:**
- ① Remove Exist. Sign(s) & Post(s) & Install New Sign(s) & Post(s)
 - ② Exist. Sign(s) & Post(s) to Remain
 - ③ Install New Sign(s)
 - ④ Install New Sign(s) & Post(s)
 - ⑤ Remove Existing Sign(s) and Post(s)

DATE	REVISION
12/1/17	Added Sign Key & sign symbols.

STATE OF HAWAII
DEPARTMENT OF TRANSPORTATION
HIGHWAYS DIVISION

PAVEMENT MARKING & SIGNING PLAN

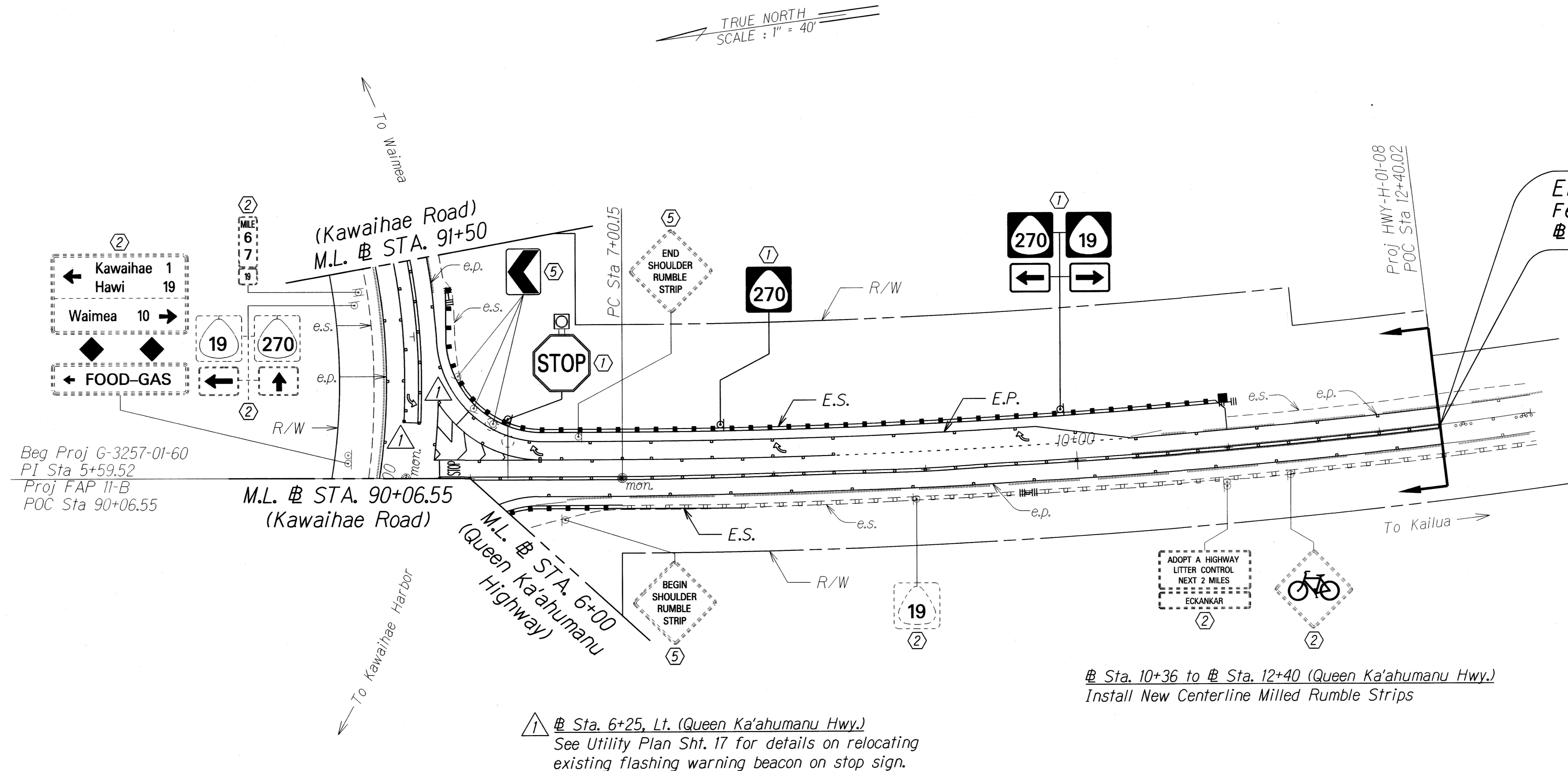
QUEEN KA'AHUMANU HIGHWAY
INTERSECTION IMPROVEMENTS
AT KAWAIHÆ ROAD

Federal-Aid Project No. HSIP-019-1(41)
Scale: 1" = 40' Date: Sept., 2017

SHEET No. 1 OF 3 SHEETS

SURVEY PLOTTED BY	DATE
DRAWN BY	
DESIGNED BY	
CHECKED BY	
ORIGINAL PLAN	
NOTE WORK	
DATE	
CHECKED BY	

FED. ROAD DIST. NO.	STATE	FED. AID PROJ. NO.	FISCAL YEAR	SHEET NO.	TOTAL SHEETS
HAWAII	HAW.	HSIP-019-1(41)	2018	ADD.13	43



① @ Sta. 6+25, Lt. (Queen Ka'ahumanu Hwy.)
See Utility Plan Sht. 17 for details on relocating existing flashing warning beacon on stop sign.

@ Sta. 10+36 to @ Sta. 12+40 (Queen Ka'ahumanu Hwy.)
Install New Centerline Milled Rumble Strips

QUEEN KA'AHUMANU HIGHWAY

- KEY:
- ① Remove Exist. Sign(s) & Post(s) & Install New Sign(s) & Post(s)
 - ② Exist. Sign(s) & Post(s) to Remain
 - ③ Install New Sign(s)
 - ④ Install New Sign(s) & Post(s)
 - ⑤ Remove Existing Sign(s) and Post(s)

DATE	REVISION
12/1/17	Added note. Added new Stop Bars to plan. Added Sign Key & sign symbols.

STATE OF HAWAII
DEPARTMENT OF TRANSPORTATION
HIGHWAYS DIVISION

PAVEMENT MARKING & SIGNING PLAN

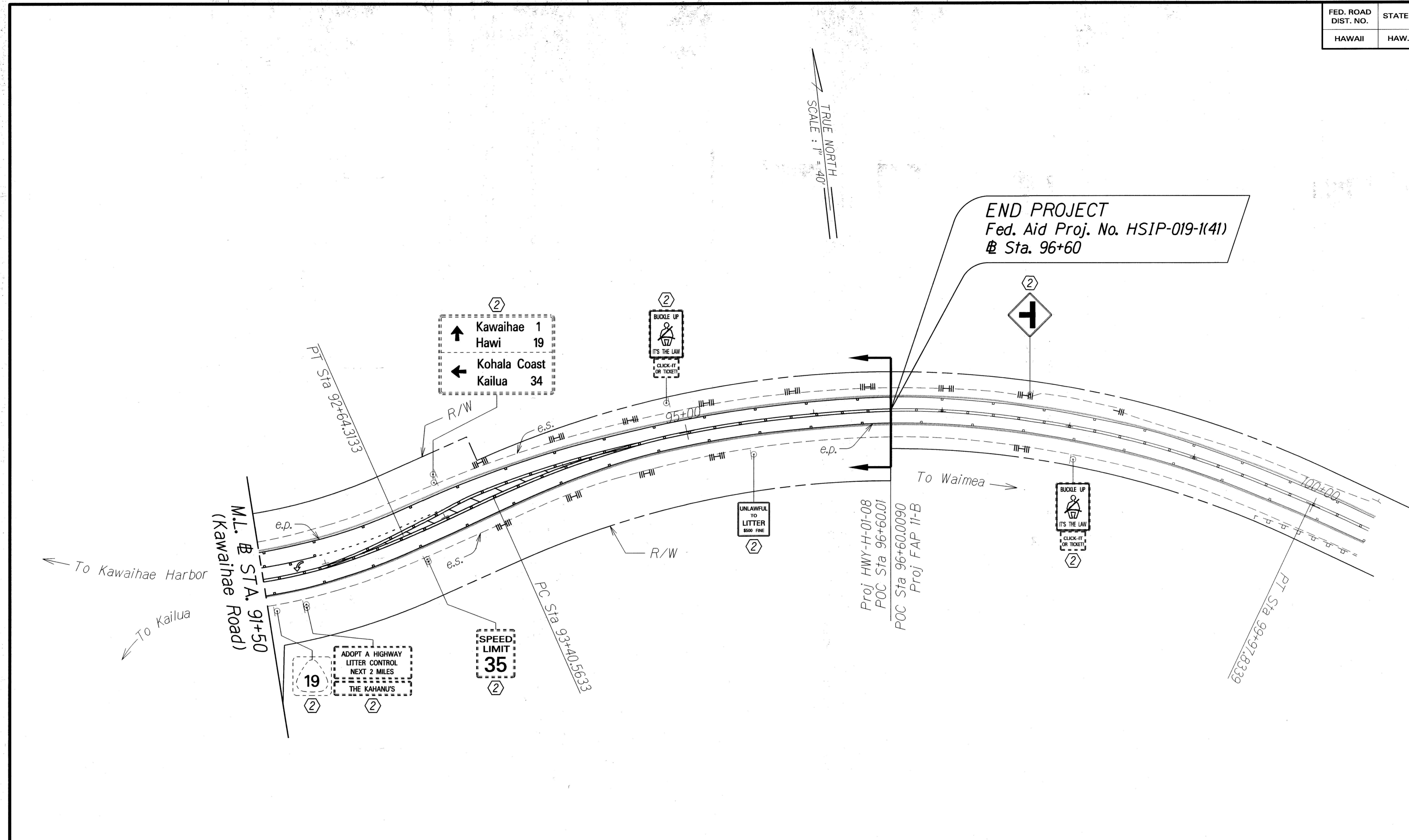
**QUEEN KA'AHUMANU HIGHWAY
INTERSECTION IMPROVEMENTS
AT KAWAIHAE ROAD**

Federal-Aid Project No. HSIP-019-1(41)
Scale: 1" = 40' Date: Sept., 2017

SHEET No. 2 OF 3 SHEETS

SURVEY PLOTTED BY	DATE
DRAWN BY	
DESIGNED BY	
CHECKED BY	

FED. ROAD DIST. NO.	STATE	FED. AID PROJ. NO.	FISCAL YEAR	SHEET NO.	TOTAL SHEETS
HAWAII	HAW.	HSIP-019-1(41)	2018	ADD.14	43



UPPER KAWAIHAE ROAD

- KEY:**
- ① Remove Exist. Sign(s) & Post(s) & Install New Sign(s) & Post(s)
 - ② Exist. Sign(s) & Post(s) to Remain
 - ③ Install New Sign(s)
 - ④ Install New Sign(s) & Post(s)
 - ⑤ Remove Existing Sign(s) and Post(s)

DATE	REVISION
12/1/17	Added Sign Key & sign symbols.

STATE OF HAWAII
DEPARTMENT OF TRANSPORTATION
HIGHWAYS DIVISION

PAVEMENT MARKING & SIGNING PLAN

**QUEEN KA'AHUMANU HIGHWAY
INTERSECTION IMPROVEMENTS
AT KAWAIHAE ROAD**

Federal-Aid Project No. HSIP-019-1(41)
Scale: 1" = 40' Date: Sept., 2017

SHEET No. 3 OF 3 SHEETS

SURVEY PLOTTED BY	DATE
DRAWN BY	
DESIGNED BY	
CHECKED BY	