

FED. ROAD DIST. NO.	STATE	PROJ. NO.	FISCAL YEAR	SHEET NO.	TOTAL SHEETS
HAWAII	HAW	19FGH-01-07M	2008	26	51

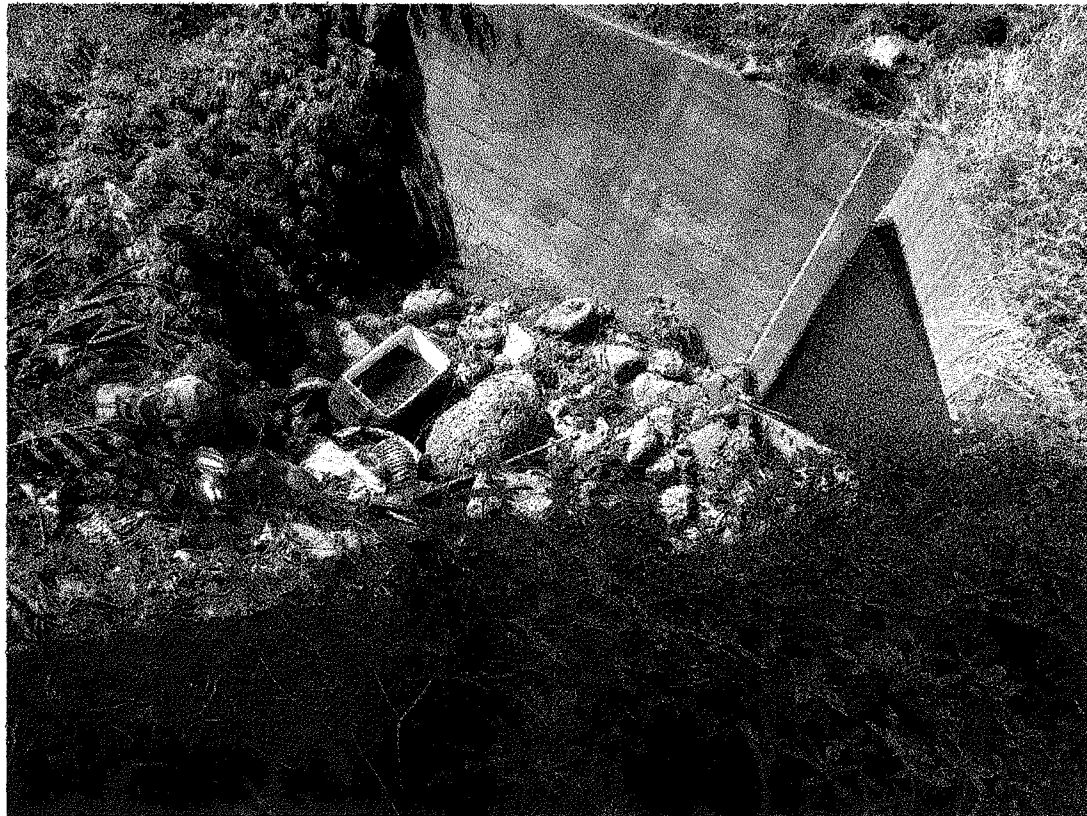


Photo 1
Clear silt deposit & loose debris from inlet opening



Photo 2



Photo 3

PHOTO NOTE:
Photographs are only for identifying the worksite. The Contractor shall perform his/her own site inspection to verify the existing site conditions that he/she may encounter during construction.

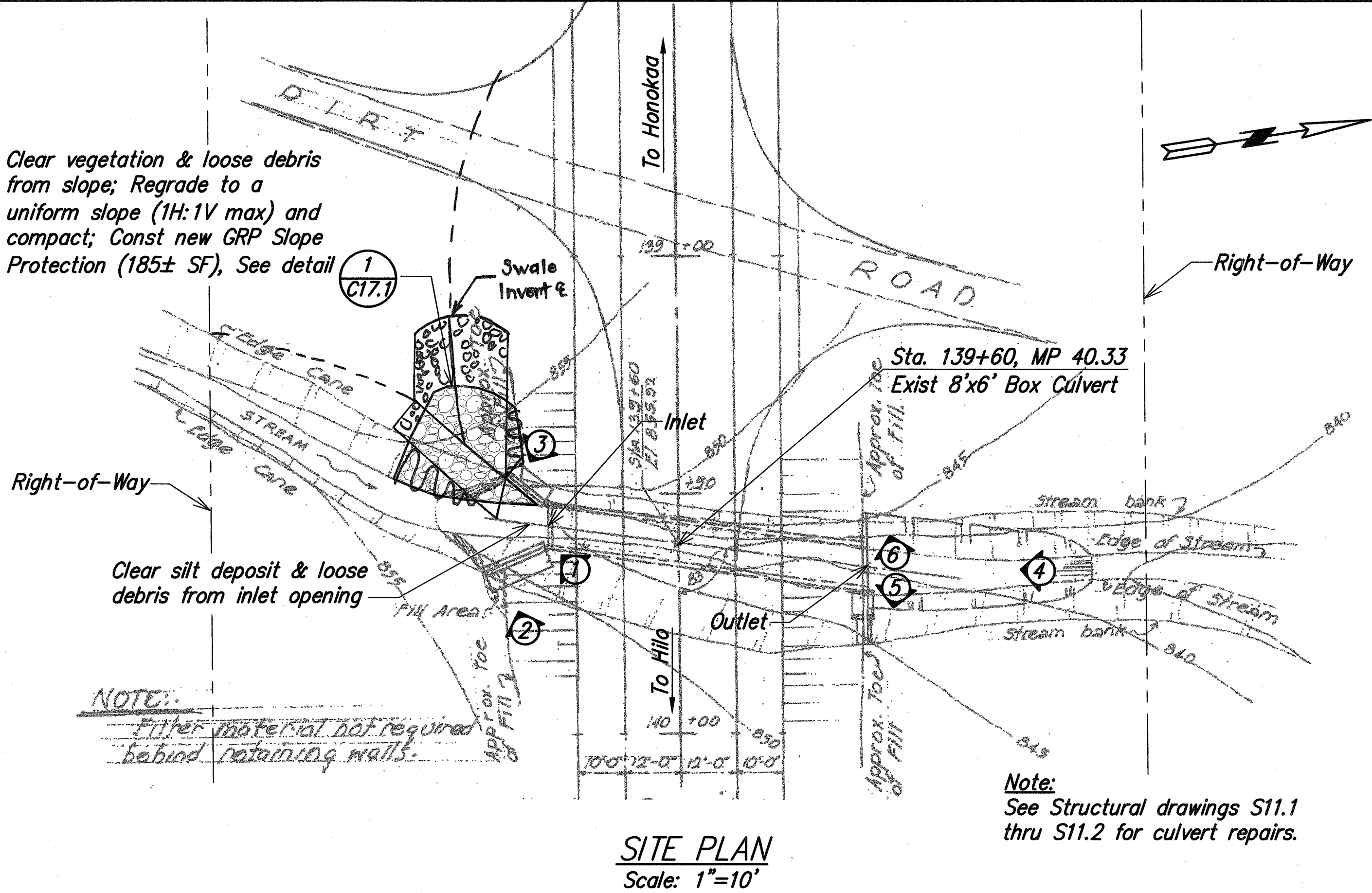


Photo 4

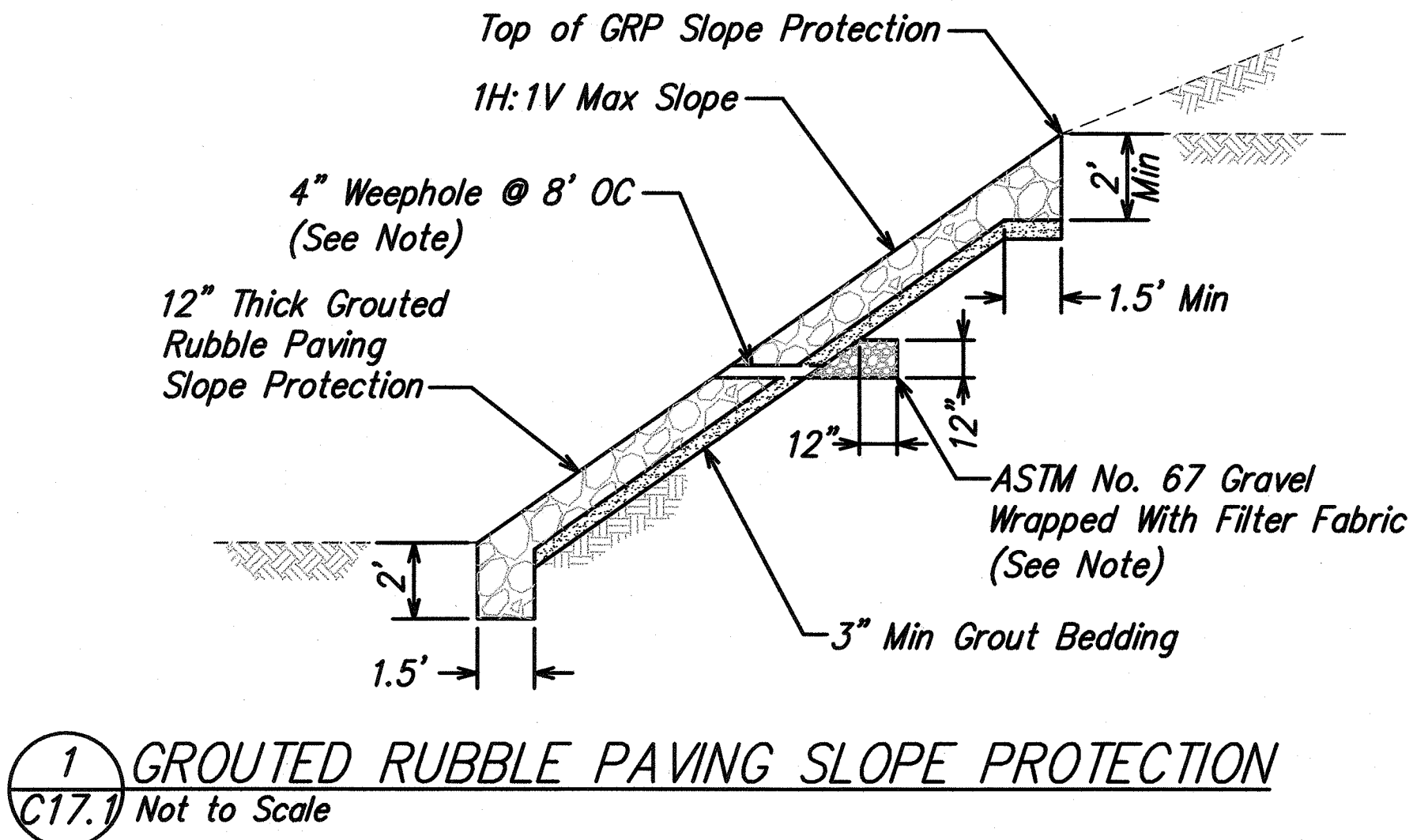


Photo 5



Photo 6

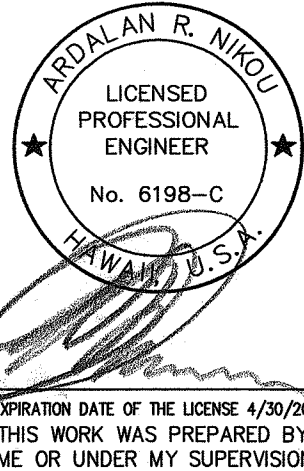
Note:
Weepholes & continuous gravel layer shall be located at approximately 1/3-height of slope protection.



Graphic Scale:



EarthTech
A Tyco International Ltd. Company



STATE OF HAWAII
DEPARTMENT OF TRANSPORTATION
HIGHWAYS DIVISION

**MILE POST 40.33
SITE IMPROVEMENTS**
**HAWAII BELT ROAD DRAINAGE
IMPROVEMENTS**
Project No. 19FGH-01-07M

Scale: As Noted Date: April 2007

SHEET No. C17.1 OF 1 SHEETS

"AS-BUILT"