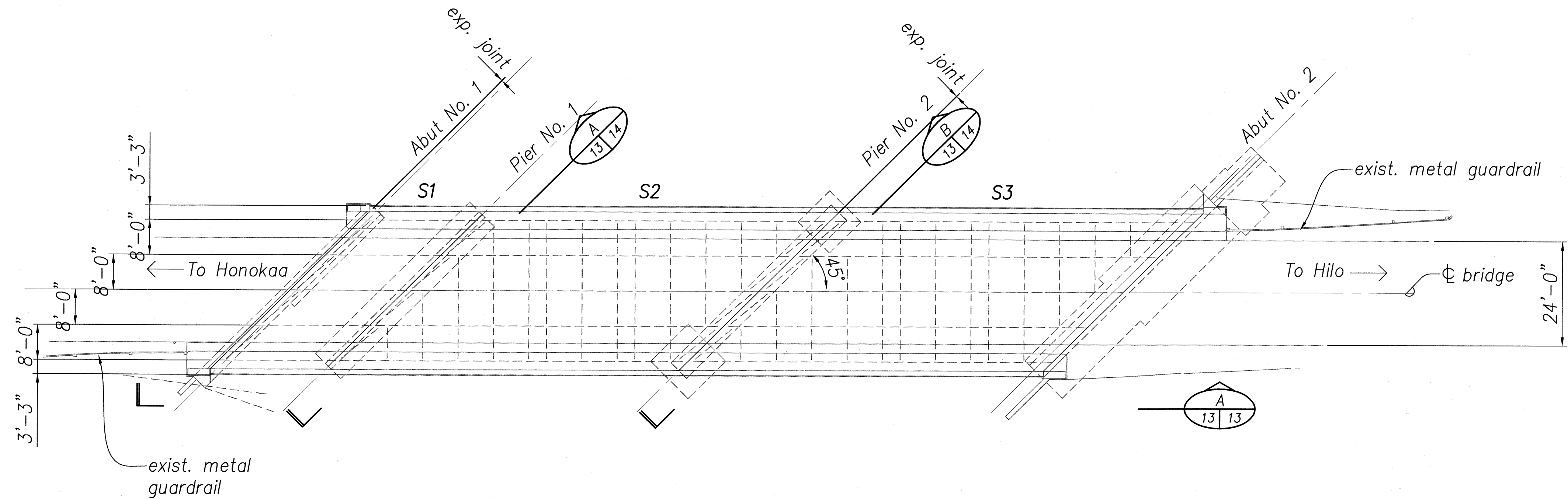
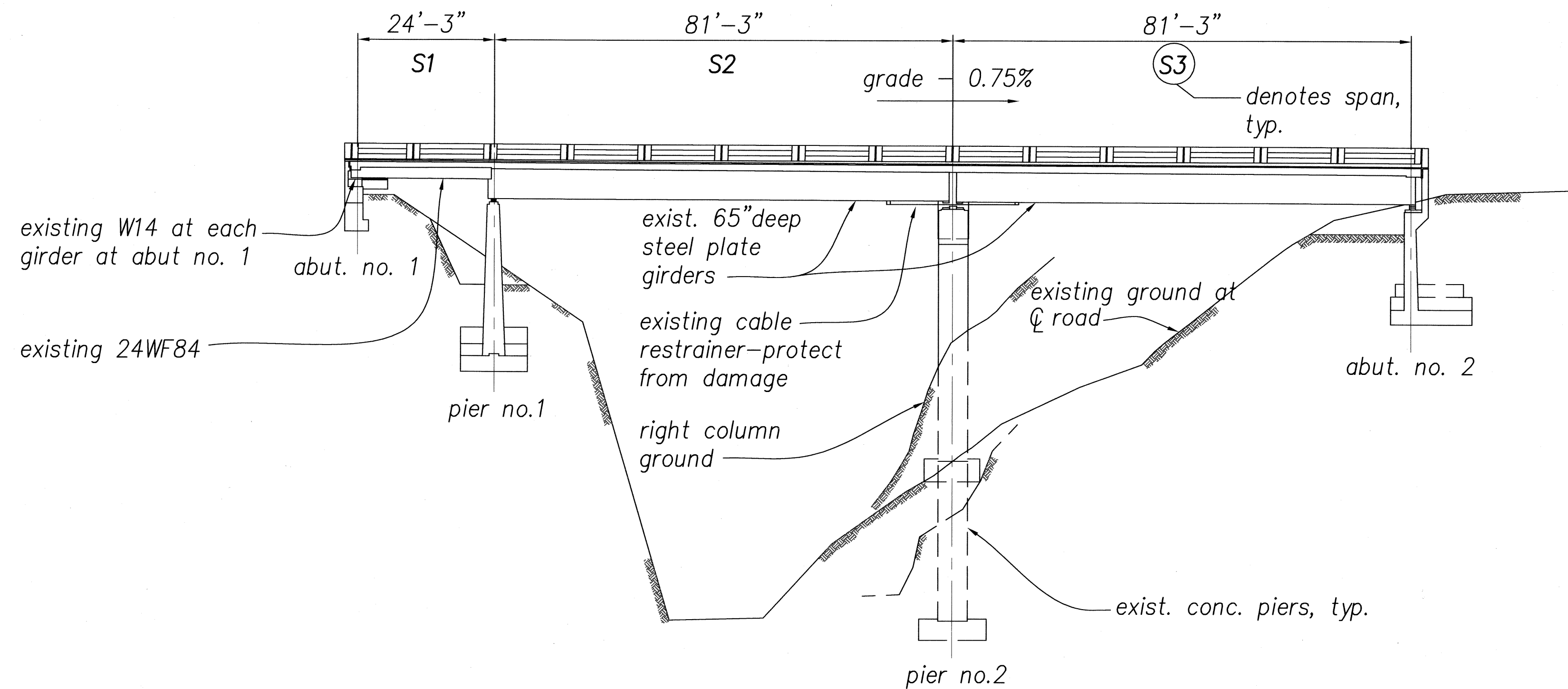


FED. ROAD DIST. NO.	STATE	FED. AID PROJ. NO.	FISCAL YEAR	SHEET NO.	TOTAL SHEETS
HAWAII	HAW.	BR-019-2(59)	2009	13	22

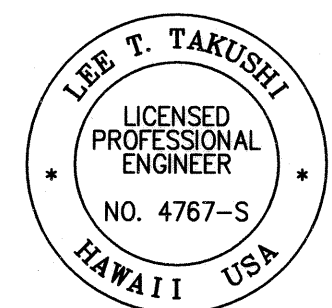


DECK PLAN - KUWAIKAHI BRIDGE
Scale: 1/16" = 1'-0" 1
13 | 13



LONGITUDINAL ELEVATION - KUWAIKAHI BRIDGE
Scale: 1/16" = 1'-0" A
13 | 13

ORIGINAL PLAN	DATE
SURVEY PLOTTED BY	
DRAWN BY	
DESIGNED BY	
CHECKED BY	
NO.	

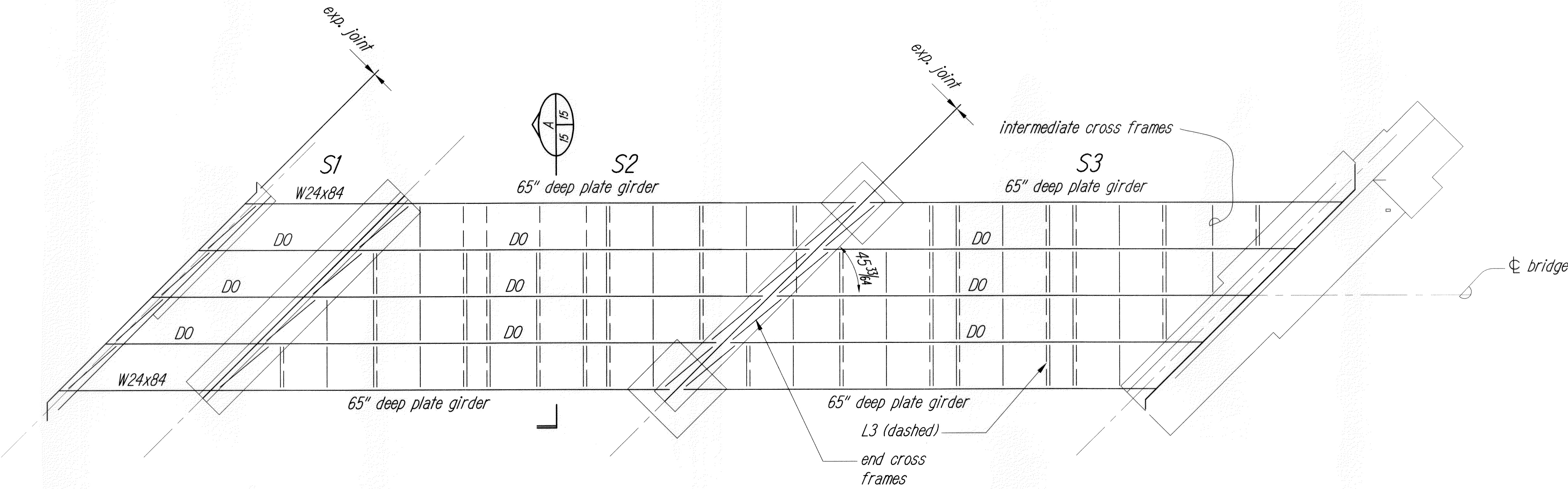


THIS WORK WAS PREPARED BY ME OR UNDER MY SUPERVISION

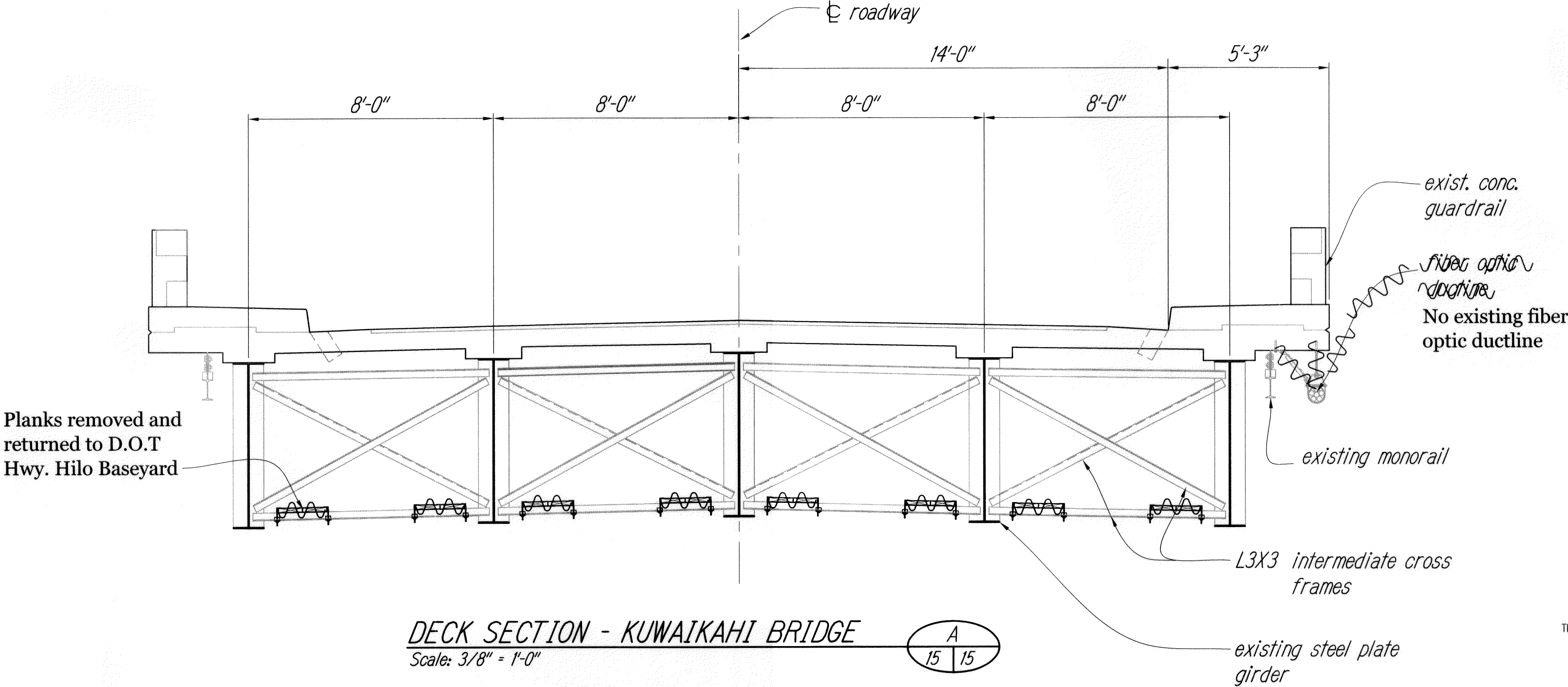
Lee T. Takushi 4/30/10
SIGNATURE EXP. DATE OF THE LICENSE

STATE OF HAWAII
DEPARTMENT OF TRANSPORTATION
HIGHWAYS DIVISION
KUWAIKAHI BRIDGE
PLAN AND ELEVATION
HAWAII BELT ROAD
CLEAN AND PAINT STEEL MEMBERS
NINOLE, MAULUA, KUWAIKAHI AND KUKAIAU
PROJECT NO. BR-019-2(59)
Scale: As Noted Date: February 2009
Sheet No. 13 Of 22 Sheets

FED. ROAD DIST. NO.	STATE	FED. AID PROJ. NO.	FISCAL YEAR	SHEET NO.	TOTAL SHEETS
HAWAII	HAW.	BR-019-2(59)	2009	15	22



FRAMING PLAN - KUWAIKAHI BRIDGE
Scale: 3/32" = 1'-0"



DECK SECTION - KUWAIKAHI BRIDGE
Scale: 3/8" = 1'-0"

LEGEND FOR
AS-BUILT POSTINGS

Squiggly line for as-built deletion

Double line for as-built deletion

Roadway Text for as-built posting

STATE OF HAWAII
DEPARTMENT OF TRANSPORTATION
HIGHWAYS DIVISION

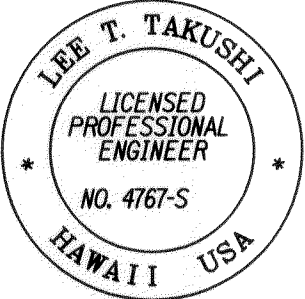
KUWAIKAHI BRIDGE
PLAN AND SECTION
HAWAII BELT ROAD

CLEAN AND PAINT STEEL MEMBERS
NINOLE, MAULUA, KUWAIKAHI AND KUKAIAU

PROJECT NO. BR-019-2(59)

Scale: As Noted Date: February 2009

Sheet No. 15 Of 22 Sheets



THIS WORK WAS PREPARED BY ME OR UNDER MY SUPERVISION

SIGNATURE: *Lee T. Takushi* 4/30/10
EXP. DATE OF THE LICENSE

SURVEY PLOTTED BY	DATE
DRAWN BY	
TRACED BY	
QUANTITIES BY	
CHECKED BY	
ORIGINAL PLAN	
NOTE BOOK	
No.	

"AS-BUILT"