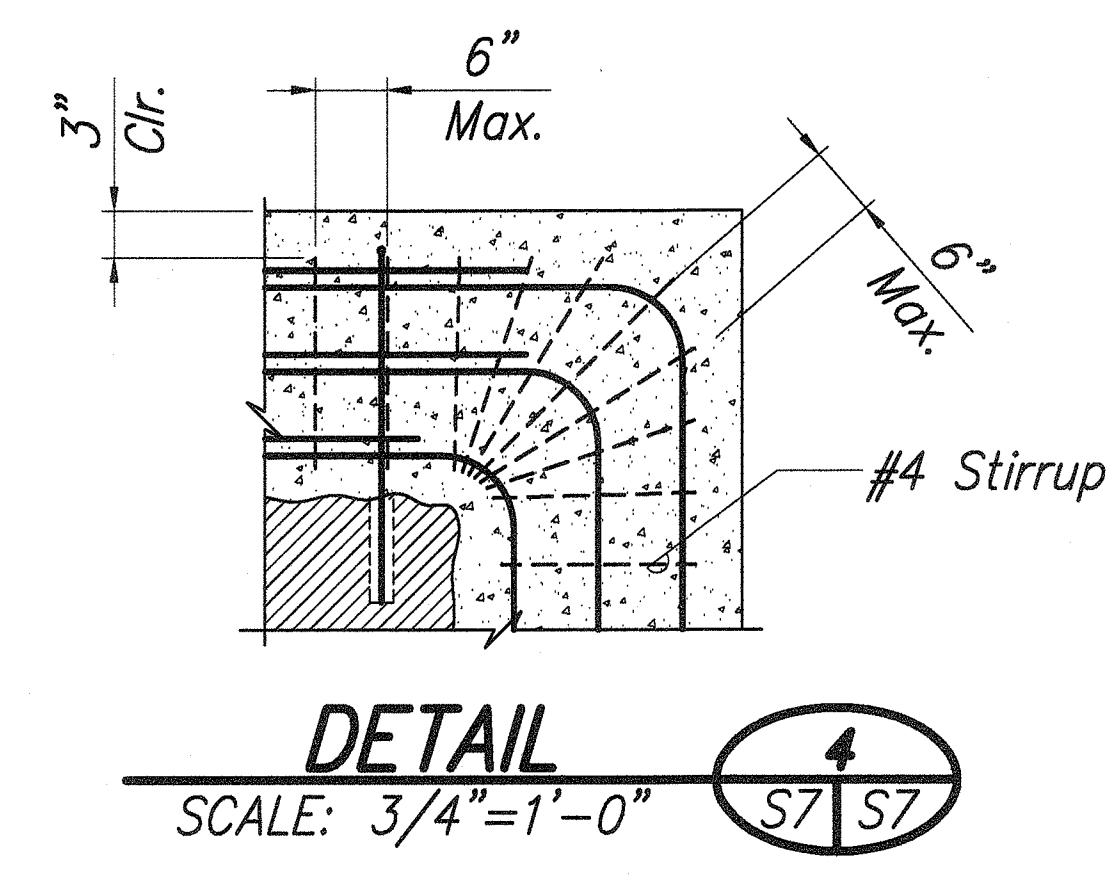
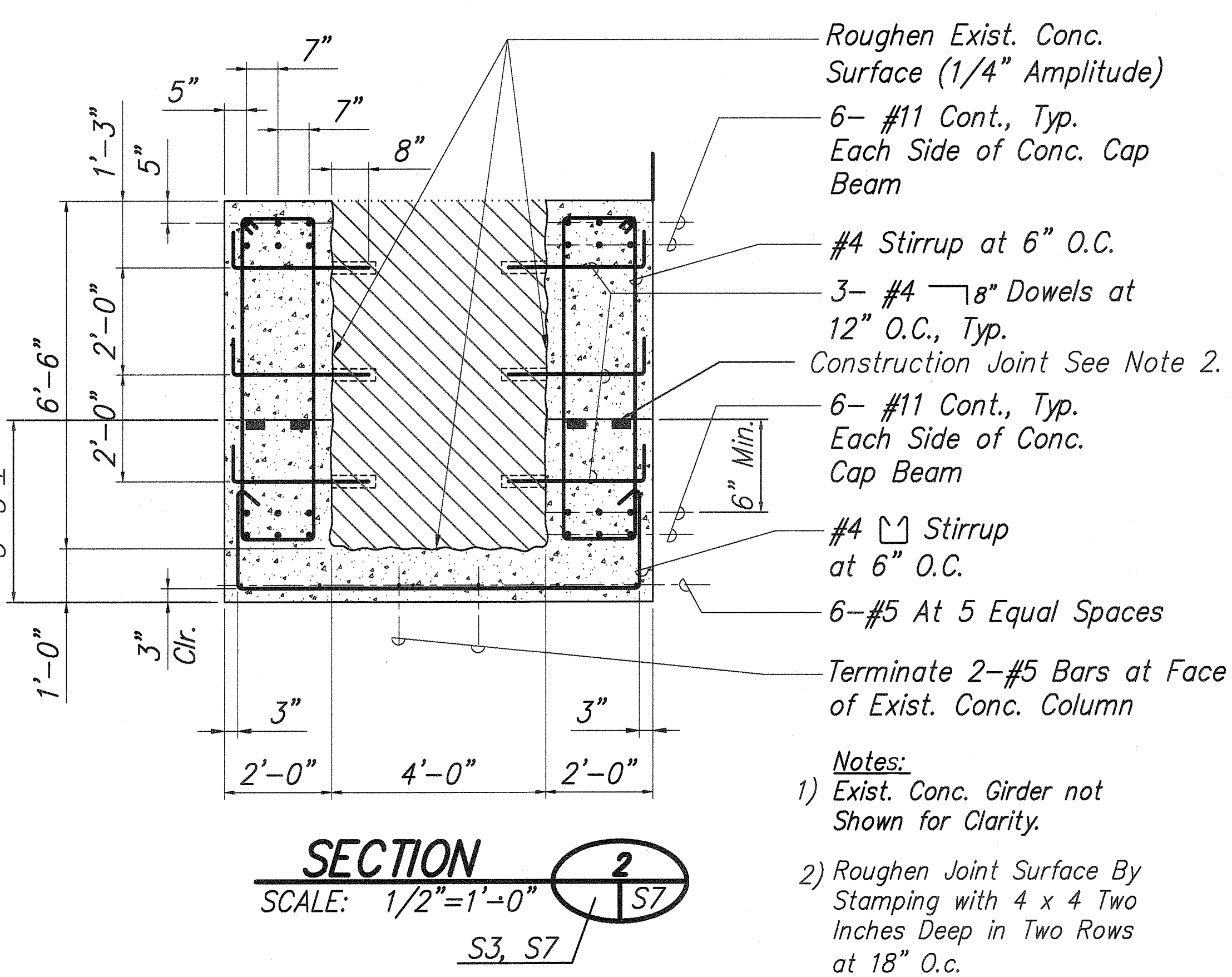
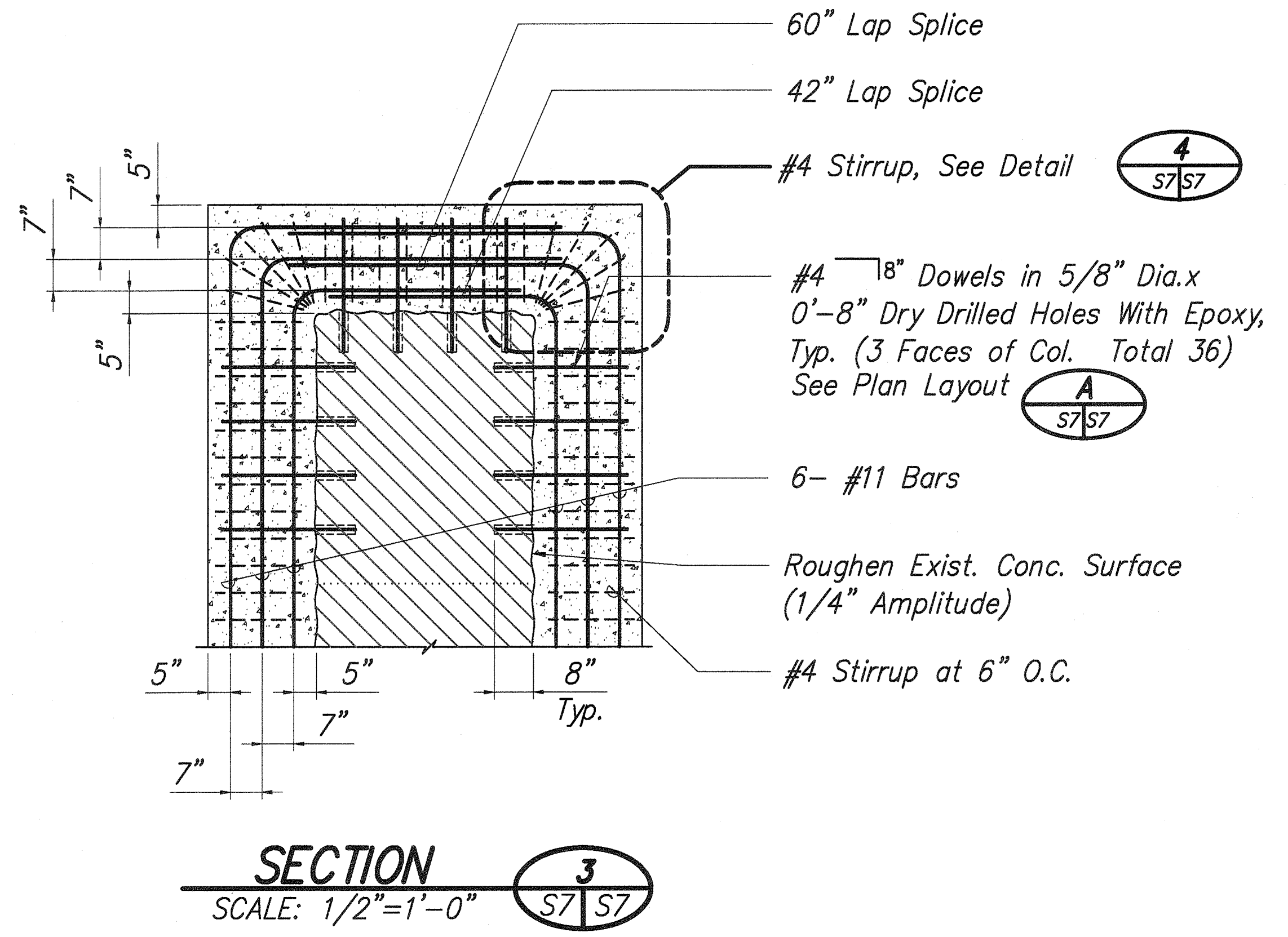
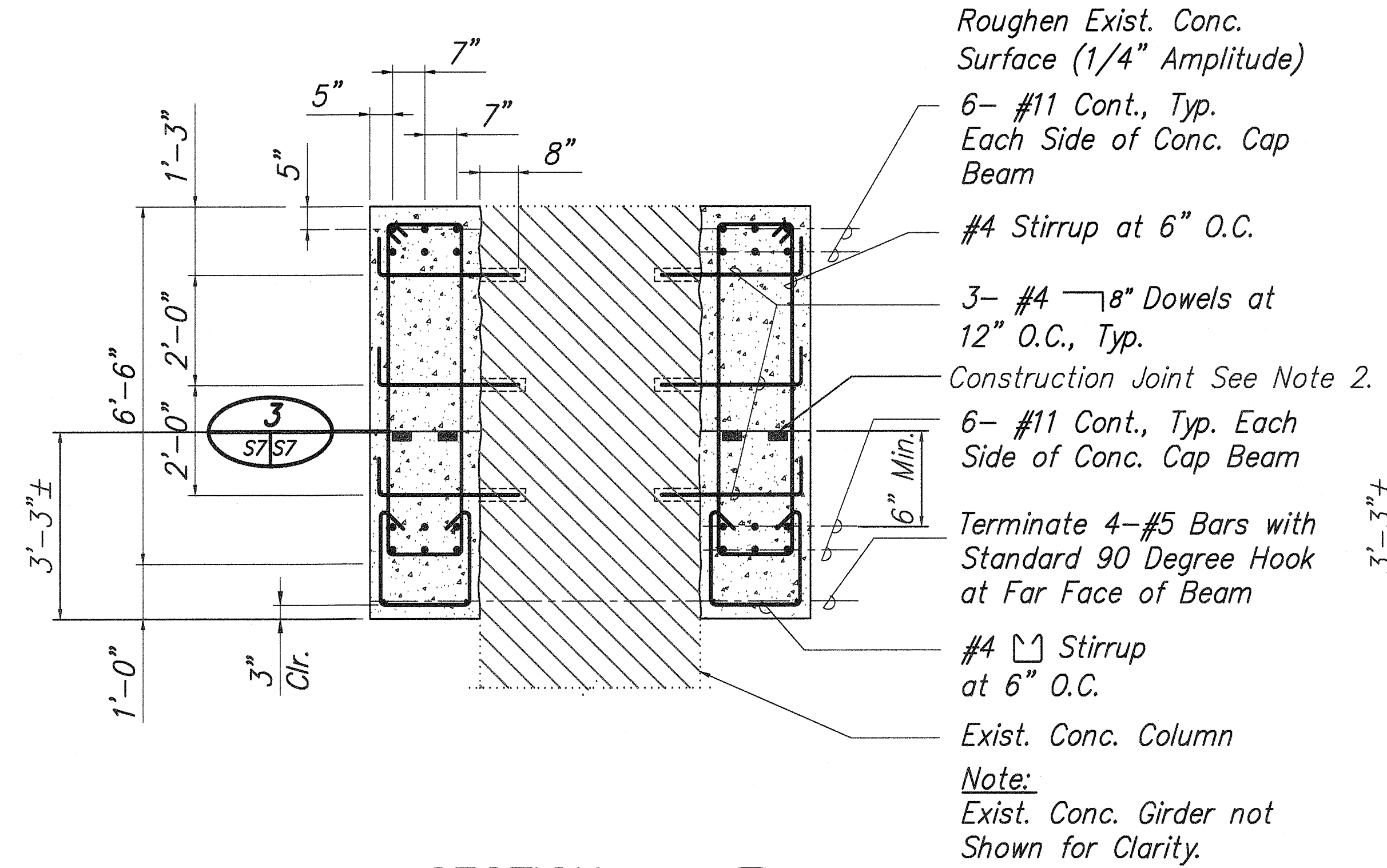
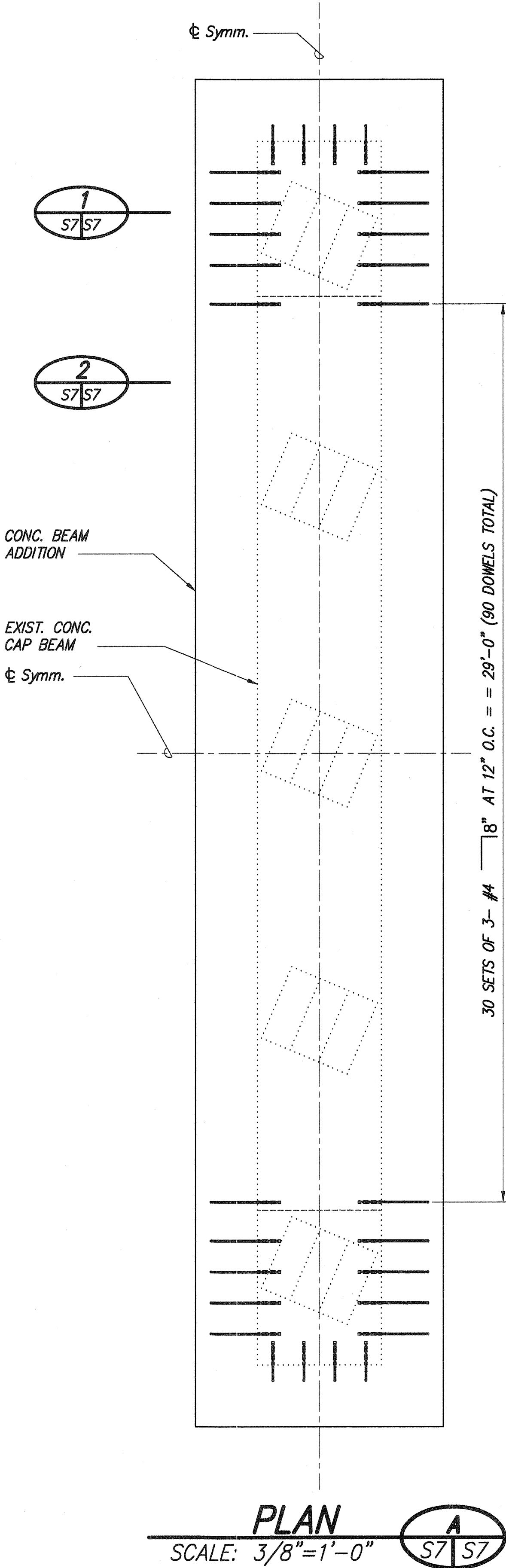


FED. ROAD DIST. NO.	STATE	FED. AID PROJ. NO.	FISCAL YEAR	SHEET NO.	TOTAL SHEETS
HAWAII	HAW.	BR-019-2(57)	2005	11	13



SURVEY PLOTTED BY	DATE
DESIGNED BY	DATE
QUANTITIES BY	DATE
CHECKED BY	DATE

Lee T. Takushi
 LICENSED PROFESSIONAL ENGINEER
 NO. 4767-S
 HAWAII, USA
 SIGNATURE: *Lee T. Takushi* 04/30/06
 THIS WORK WAS PREPARED BY ME OR UNDER MY SUPERVISION

DATE	REVISION
	STATE OF HAWAII DEPARTMENT OF TRANSPORTATION HIGHWAYS DIVISION KAIWILAHILAHI BRIDGE PIER NO. 1 AND NO. 2 NEW CONDITIONS PLAN AND SECTIONS HAWAII BELT ROAD, SEISMIC RETROFIT OF VARIOUS BRIDGES, VICINITY OF LAUPAHOEHOE FEDERAL AID PROJECT NO. BR-019-2(57) SCALE: AS NOTED DATE: OCT 2004 SHEET No. S7 OF 9 SHEETS