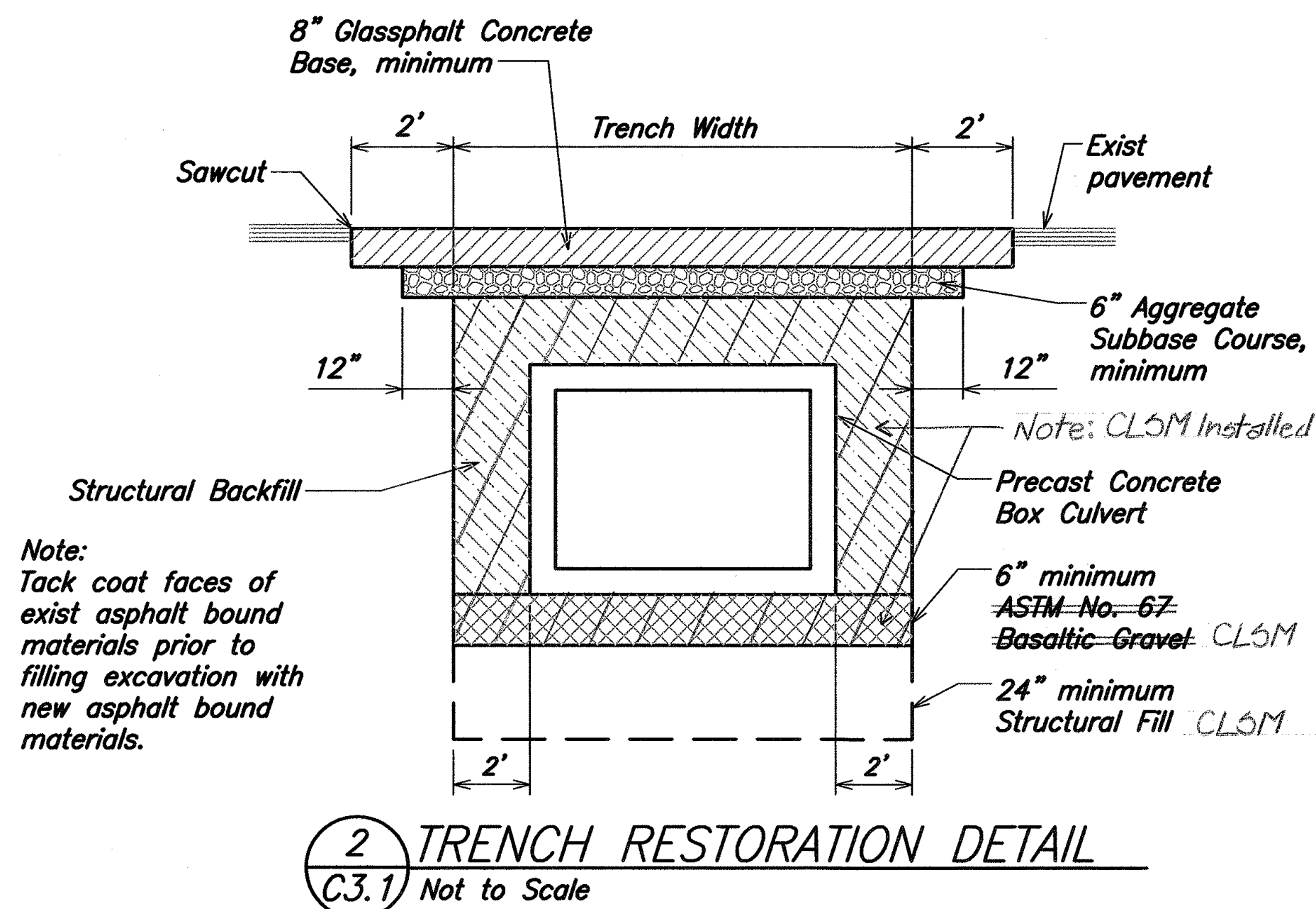
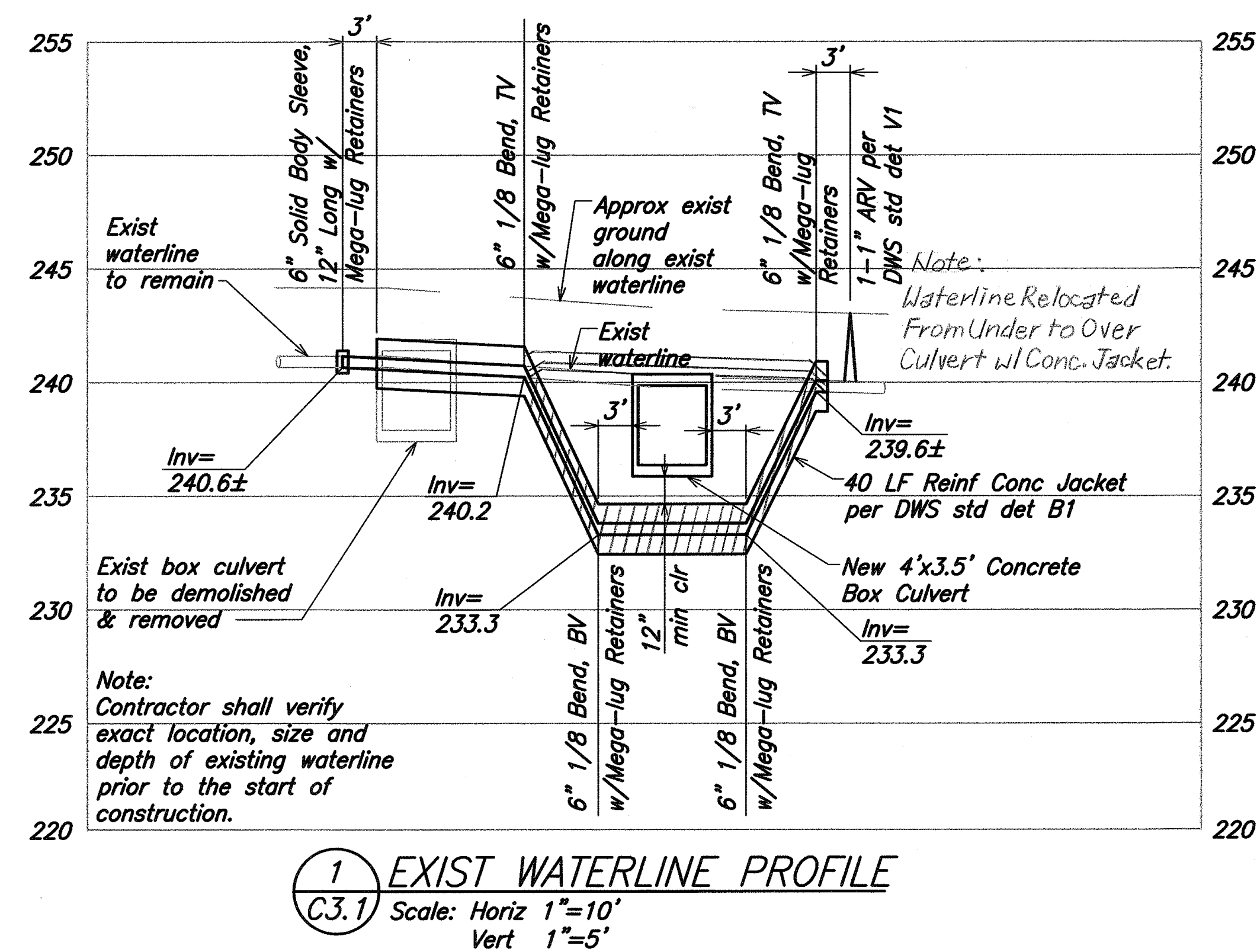
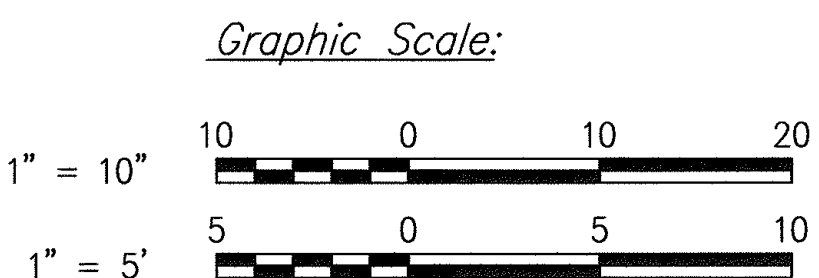
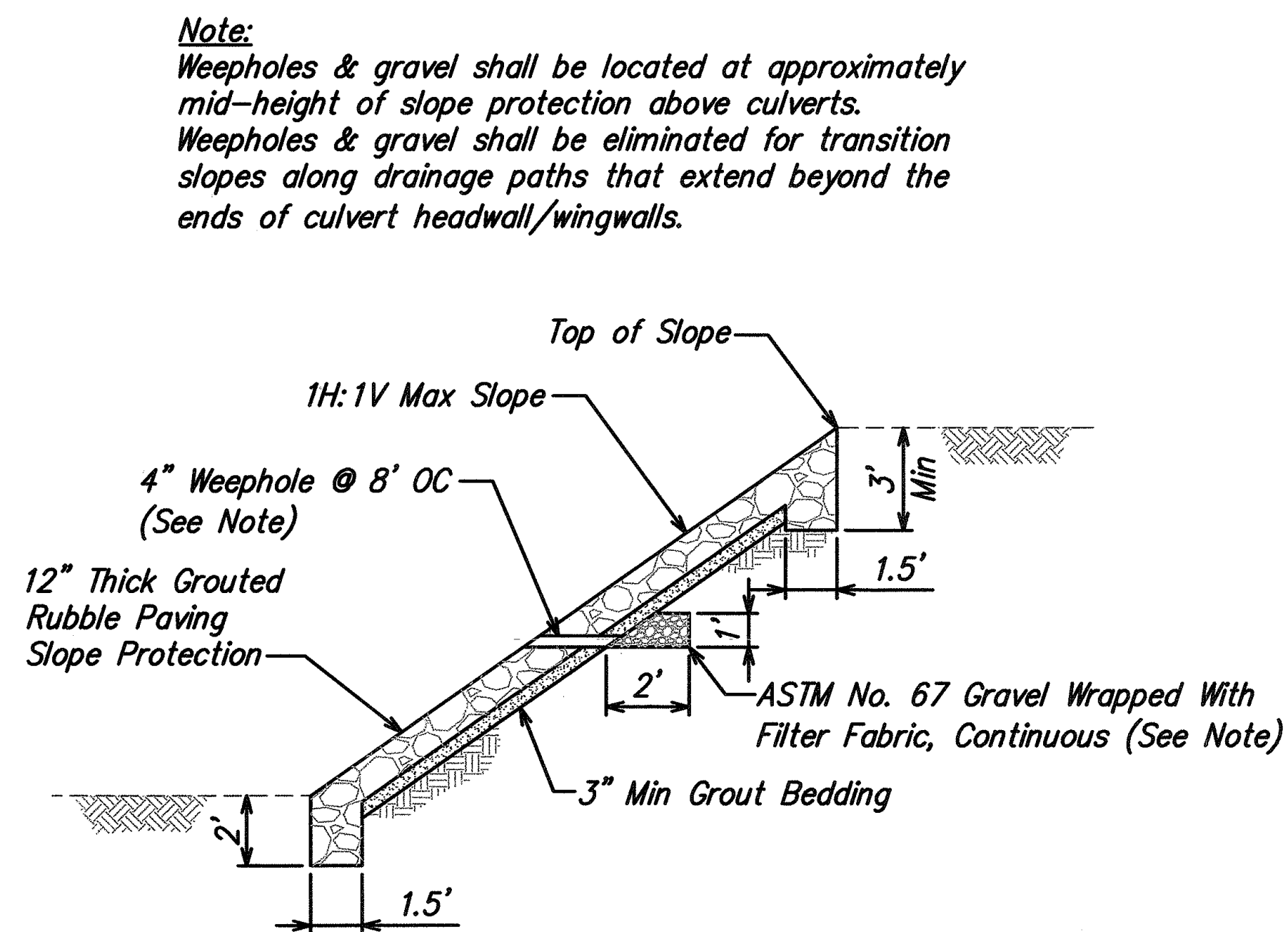
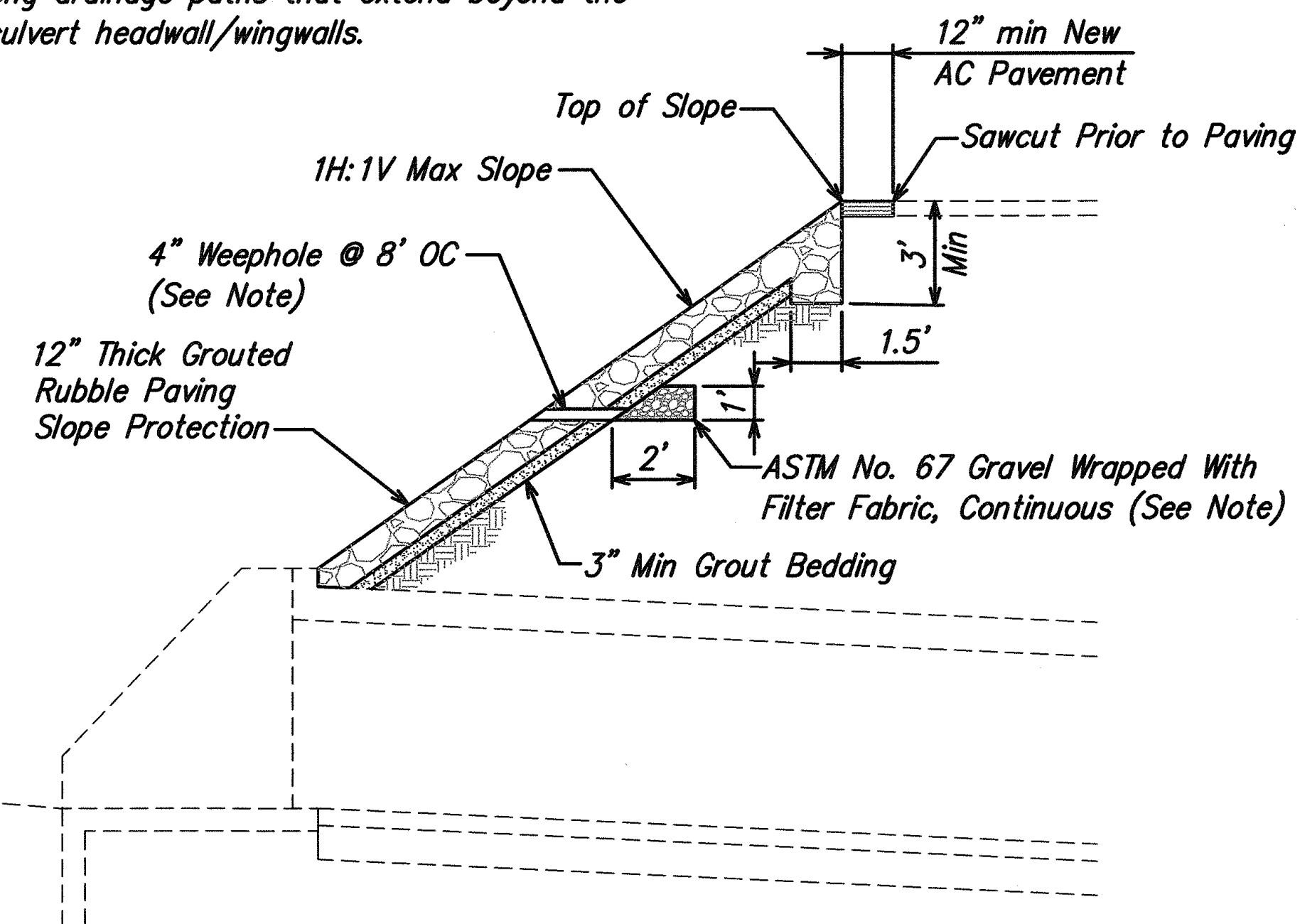


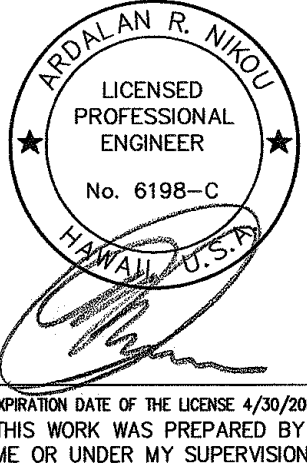
STATE	PROJ. NO.	FISCAL YEAR	SHEET NO.	TOTAL SHEETS
HAW	19GHJ-01-05M	2006	13	39



Note:  
Weepholes & gravel shall be located at approximately mid-height of slope protection above culverts.  
Weepholes & gravel shall be eliminated for transition slopes along drainage paths that extend beyond the ends of culvert headwall/wingwalls.



EarthTech  
A Tyco International Ltd. Company



STATE OF HAWAII  
DEPARTMENT OF TRANSPORTATION  
HIGHWAYS DIVISION

**CIVIL DETAILS**

HAWAII BELT ROAD DRAINAGE IMPROVEMENTS

Project No. 19GHJ-01-05M

Scale: As Shown Date: Apr 14, 2006

SHEET No. C3.1 OF 39 SHEETS