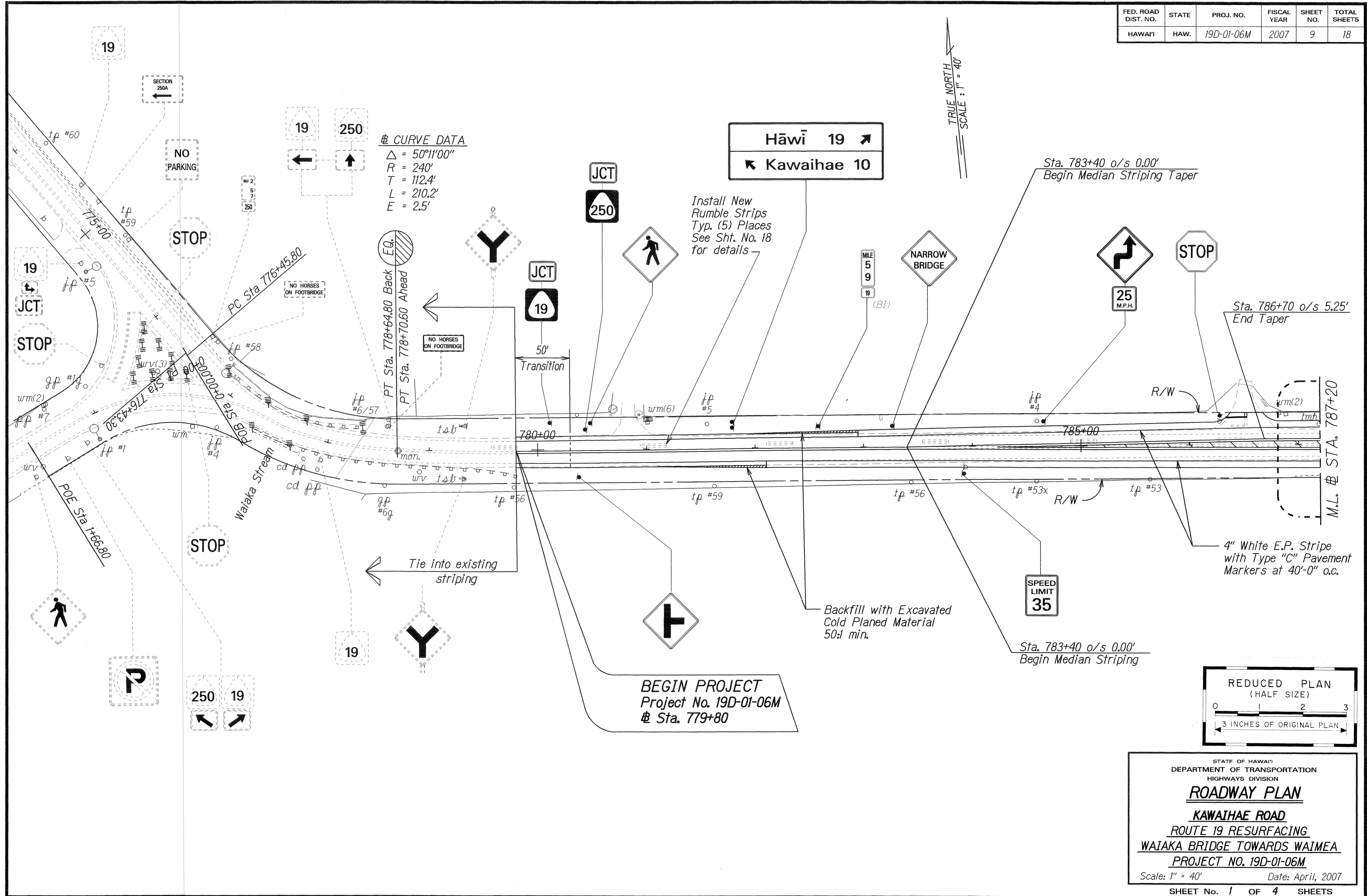
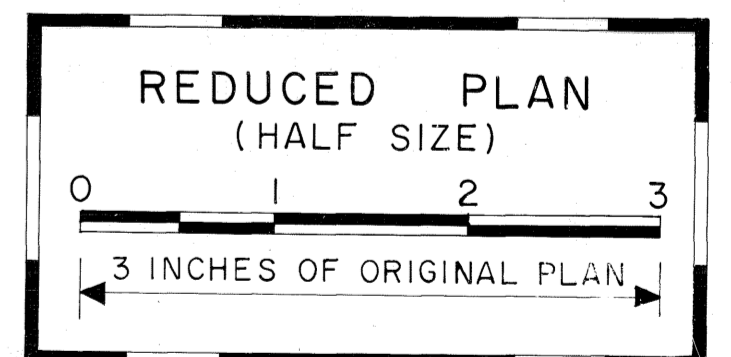


FED. ROAD DIST. NO.	STATE	PROJ. NO.	FISCAL YEAR	SHEET NO.	TOTAL SHEETS
HAWAII	HAW.	19D-01-06M	2007	9	18

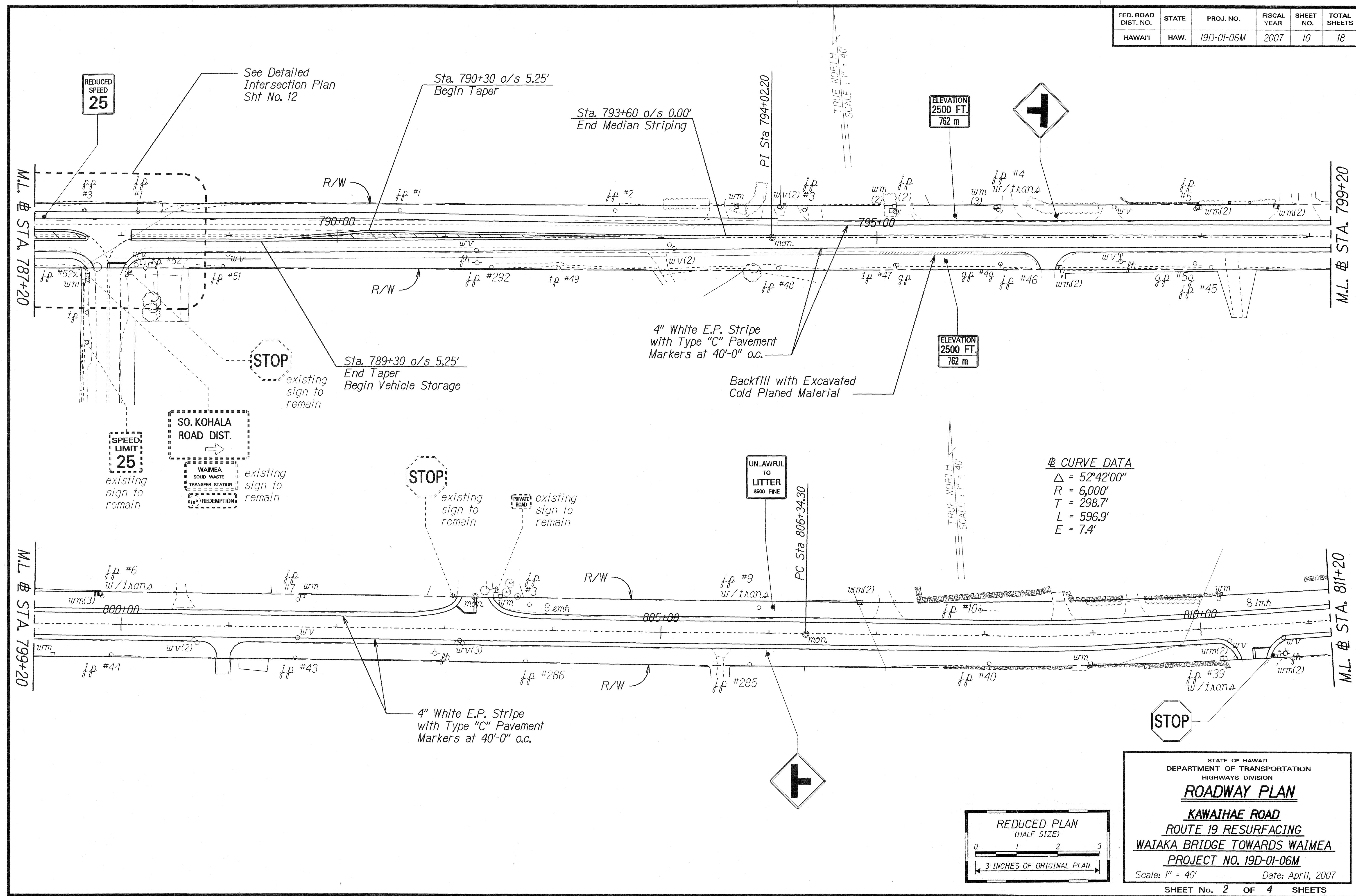


SURVEY PLOTTED BY	DATE
DRAWN BY	
DESIGNED BY	
QUANTITIES BY	
CHECKED BY	
ORIGINAL PLAN	
NOTE BOOK	
Skewed	
Checked by	

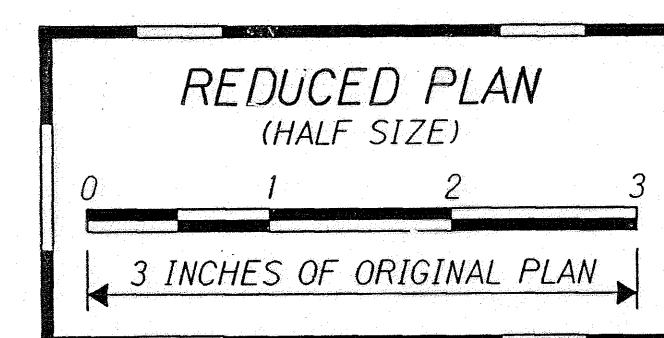


STATE OF HAWAII
 DEPARTMENT OF TRANSPORTATION
 HIGHWAYS DIVISION
ROADWAY PLAN
KAWAIHAE ROAD
 ROUTE 19 RESURFACING
 WAIAKA BRIDGE TOWARDS WAIMEA
 PROJECT NO. 19D-01-06M
 Scale: 1" = 40' Date: April, 2007
 SHEET No. 1 OF 4 SHEETS

FED. ROAD DIST. NO.	STATE	PROJ. NO.	FISCAL YEAR	SHEET NO.	TOTAL SHEETS
HAWAII	HAW.	19D-01-06M	2007	10	18

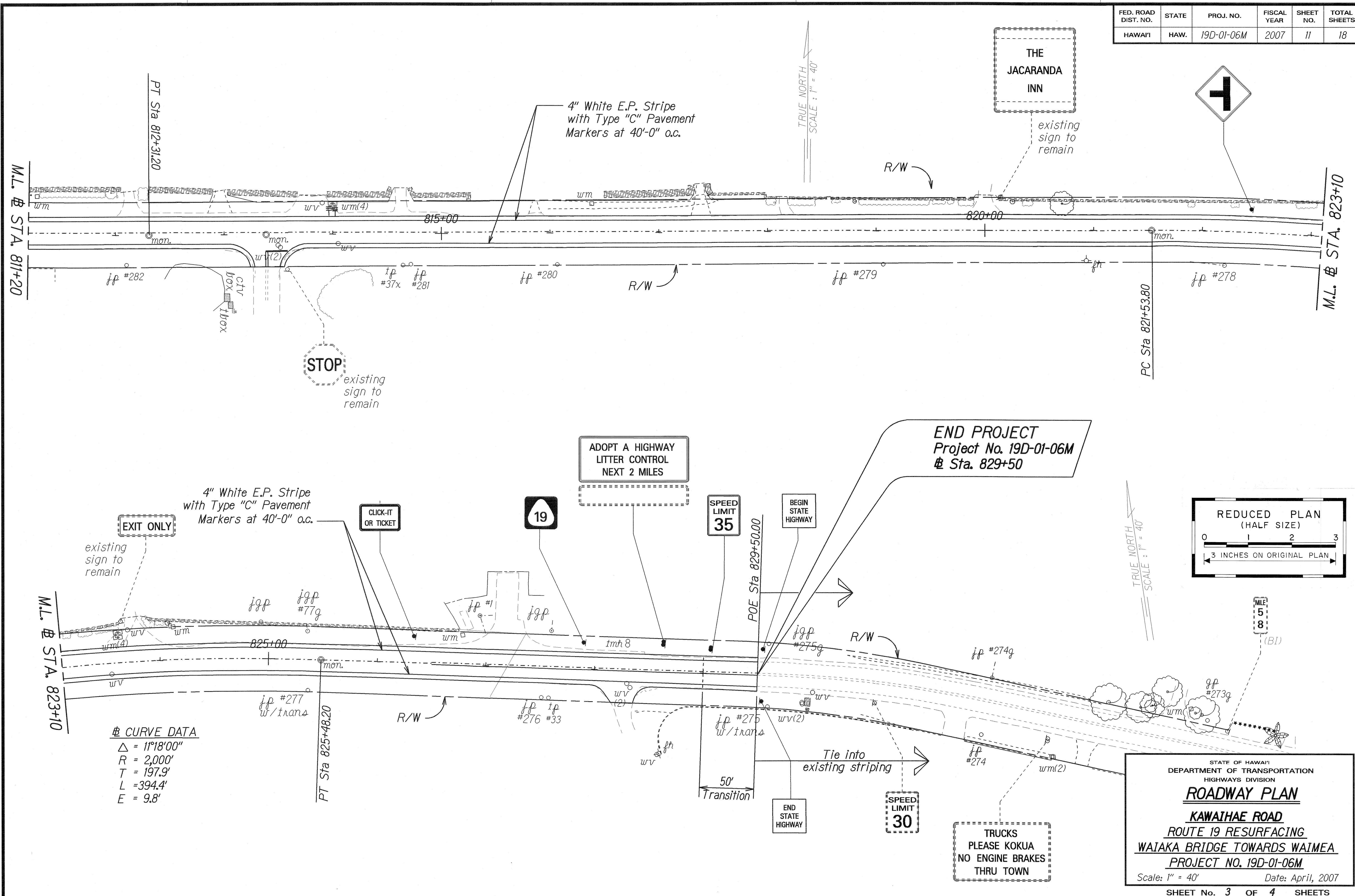


DATE: _____
 DESIGNED BY: _____
 CHECKED BY: _____
 DRAWN BY: _____
 ENGINEER BY: _____
 ORIGINAL PLAN: _____
 SCALE: _____
 SHEET NO. 10 OF 18



STATE OF HAWAII
 DEPARTMENT OF TRANSPORTATION
 HIGHWAYS DIVISION
ROADWAY PLAN
KAWAIHAE ROAD
ROUTE 19 RESURFACING
WAIKA BRIDGE TOWARDS WAIMEA
PROJECT NO. 19D-01-06M
 Scale: 1" = 40' Date: April, 2007
 SHEET No. 2 OF 4 SHEETS

FED. ROAD DIST. NO.	STATE	PROJ. NO.	FISCAL YEAR	SHEET NO.	TOTAL SHEETS
HAWAII	HAW.	19D-01-06M	2007	11	18



CURVE DATA
 $\Delta = 11^{\circ}18'00''$
 $R = 2,000'$
 $T = 197.9'$
 $L = 394.4'$
 $E = 9.8'$

EXIT ONLY
 existing sign to remain

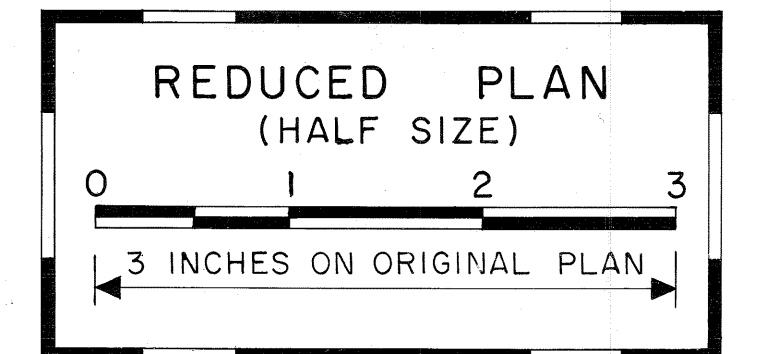
STOP
 existing sign to remain

ADOPT A HIGHWAY LITTER CONTROL NEXT 2 MILES

SPEED LIMIT 35

BEGIN STATE HIGHWAY

END PROJECT
 Project No. 19D-01-06M
 @ Sta. 829+50



ORIGINAL PLAN
 DRAWN BY
 NOTE BOOK
 QUANTITIES BY
 CHECKED BY

STATE OF HAWAII
 DEPARTMENT OF TRANSPORTATION
 HIGHWAYS DIVISION
ROADWAY PLAN
KAWAIHAE ROAD
ROUTE 19 RESURFACING
WAIAKA BRIDGE TOWARDS WAIMEA
PROJECT NO. 19D-01-06M
 Scale: 1" = 40' Date: April, 2007
 SHEET No. 3 OF 4 SHEETS

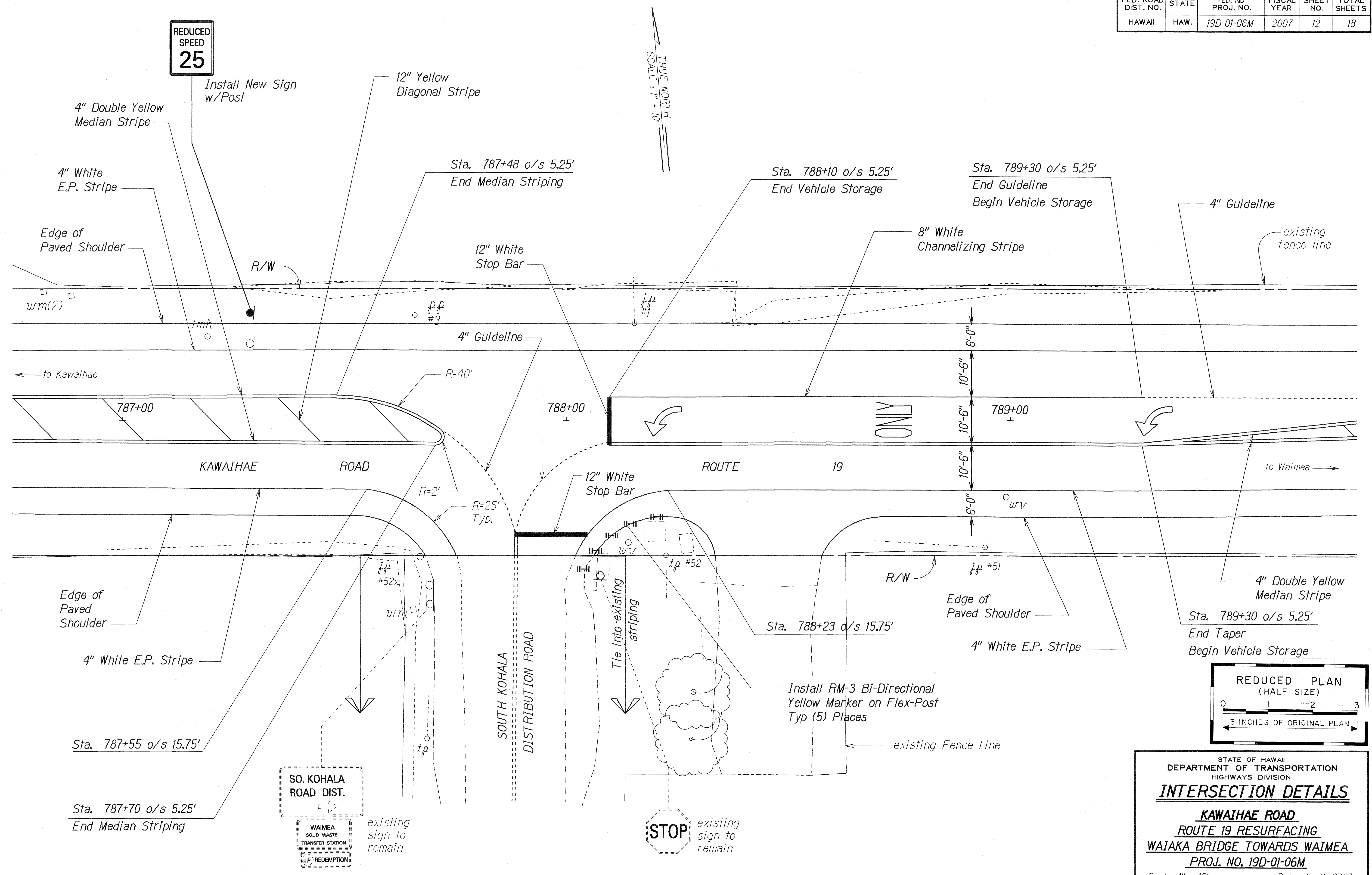
TRUCKS
 PLEASE KOKUA
 NO ENGINE BRAKES
 THRU TOWN

SPEED LIMIT 30

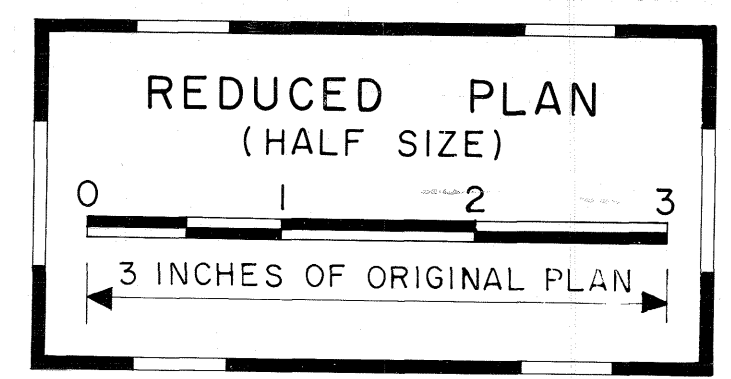
END STATE HIGHWAY

50' Transition

FED. ROAD DIST. NO.	STATE	FED. AID PROJ. NO.	FISCAL YEAR	SHEET NO.	TOTAL SHEETS
HAWAII	HAW.	19D-01-06M	2007	12	18



SURVEY PLOTTED BY	DATE
DRAWN BY	
DESIGNED BY	
QUANTITIES BY	
CHECKED BY	
ORIGINAL PLAN	
NOTE BOOK	
5/10/07	
No.	



STATE OF HAWAII
DEPARTMENT OF TRANSPORTATION
HIGHWAYS DIVISION
INTERSECTION DETAILS
KAWAIHAE ROAD
ROUTE 19 RESURFACING
WAIAKA BRIDGE TOWARDS WAIMEA
PROJ. NO. 19D-01-06M
Scale: 1" = 10' Date: April, 2007
SHEET No. 4 OF 4 SHEETS