

ORIGINAL PLAN No. _____

SURVEY PLOTTED BY _____

DESIGNED BY _____

TRACED BY _____

NOTE BOOK

QUANTITIES BY _____

CHECKED BY _____

W:_CIVIL_3D_PROJECTS\2008_003_001_GBI_QUEEN_K_Hwy_WIDENING\01_CIVIL DRAWINGS\002 STANDARD PLANS SUMMARY.DWG 4/11/2016 5:03 PM

STANDARD PLANS SUMMARY

FED. ROAD DIST. NO.	STATE	FED. AID PROJ. NO.	FISCAL YEAR	SHEET NO.	TOTAL SHEETS
HAWAII	HAW.	NH-019-1(38)R	2016	C.O. 2	528 522

STANDARD PLAN NO.	TITLE	DATE
B-01 ●	NOTES & MISCELLANEOUS DETAILS	05/31/07
B-03 ●	BACKFILL DETAILS AT EARTH RETAINING STRUCTURES	05/31/07
B-12	PRESTRESSED CONCRETE PILES & COMPRESSION SPLICE	05/31/07
	CAN DETAILS	
B-12A	PRESTRESSED CONCRETE PILES, PILE & COMPRESSION	05/31/07
	SPLICE CAN DETAILS & NOTES	
B-12B	PILE INTERACTION DIAGRAM	05/31/07
B-13	PRESTRESSED CONCRETE PILE BUILD-UP DETAILS	05/31/07

D-01	CATTLE GATE	05/31/07
D-02 ●	CHAIN LINK FENCE WITH TOPRAIL 1	05/31/07
D-03 ●	CHAIN LINK FENCE WITHOUT TOPRAIL	05/31/07
D-04	WIRE FENCE WITH METAL POSTS	05/31/07
D-05 ●	TYPICAL DETAILS OF CURBS AND/OR CUTTERS 1	05/31/07
D-06	TYPICAL DETAIL OF REINFORCED CONCRETE DROP DRIVEWAY	05/31/07
D-07 ●	CENTERLINE AND REFERENCE SURVEY MONUMENTS	05/31/07
D-08 ●	STREET SURVEY MONUMENT	05/31/07
D-15	CONCRETE SIDEWALK	05/31/07
D-16	P.C.C. BUS PAD	05/31/07
D-17	P.C.C. BUS PAD	05/31/07
D-18 ●	P.C.C. PAVEMENT LAYOUT	05/31/07
D-19	P.C.C. PAVEMENT W/ PERMEABLE BASE JOINT DETAILS	05/31/07
D-20	P.C.C. PAVEMENT W/ PERMEABLE BASE JOINT DETAILS	05/31/07
D-21 ●	P.C.C. LONGITUDINAL JOINT DETAILS	05/31/07
D-22	P.C.C. CONNECTION TO CURBS AND GUTTERS	05/31/07
D-23 ●	JOINTS	05/31/07

L-01 ●	TREE PLANTING	08/16/06
L-02 ●	TREE PLANTING	08/16/06
L-03 ●	TREE TRANSPLANTING	08/16/06
L-04 ●	PALM PLANTING	08/16/06
L-05 ●	SHRUB PLANTING	08/16/06
L-06 ●	LANDSCAPE DETAILS	08/16/06
L-07 ●	LANDSCAPE DETAILS	08/16/06
L-08 ●	LANDSCAPE DETAILS	08/16/06
L-09 ●	LANDSCAPE DETAILS	08/16/06
L-10 ●	LANDSCAPE DETAILS	08/16/06
L-11 ●	PLANTING NOTES	08/16/06
L-12	IRRIGATION DETAILS	08/16/06
L-13	IRRIGATION DETAILS	08/16/06
L-14	IRRIGATION DETAILS	08/16/06
L-15	IRRIGATION DETAILS	08/16/06
L-16	IRRIGATION DETAILS	08/16/06
L-17	IRRIGATION DETAILS	08/16/06
L-18	IRRIGATION DETAILS	08/16/06
L-19	IRRIGATION DETAILS	08/16/06
L-20	IRRIGATION DETAILS	08/16/06
L-21	IRRIGATION DETAILS	08/16/06
L-22	IRRIGATION DETAILS	08/16/06
L-23	IRRIGATION DETAILS	08/16/06
L-24	IRRIGATION NOTES	08/16/06

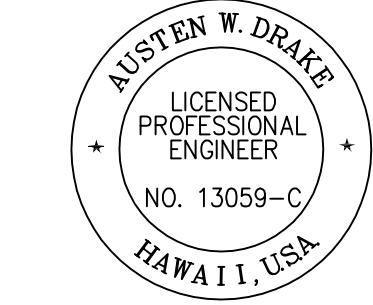
STANDARD PLAN NO.	TITLE	DATE
H-01A	TYPE A CATCH BASIN	05/31/07
H-01B	TYPE B CATCH BASIN	05/31/07
H-01C	TYPE C CATCH BASIN	05/31/07
H-01D	TYPE D CATCH BASIN	05/31/07
H-01E	CATCH BASIN SECTIONS	05/31/07
H-02A	TYPE A1 CATCH BASIN	05/31/07
H-02B	TYPE B2 CATCH BASIN	05/31/07
H-02C	TYPE C1 CATCH BASIN	05/31/07
H-02D	TYPE D1 CATCH BASIN	05/31/07
H-02E	CATCH BASIN SECTION	05/31/07
1 H-03 ●	TYPE A,B, AND C STORM DRAIN MANHOLE	05/31/07
H-04 ●	TYPE D STORM DRAIN MANHOLE	05/31/07
H-05 ●	TYPICAL REINFORCING DETAILS FOR DRAINAGE STRUCTURES	05/31/07
H-06 ●	TYPICAL REINFORCING DETAILS FOR DRAINAGE STRUCTURES	05/31/07
1 H-07 ●	CATCH BASIN AND MANHOLE CASTINGS	05/31/07
H-08 ●	TYPE 1A-9 AND 1A-9P GRATED DROP INLET	05/31/07
1 H-09 ●	TYPE 2A-9 AND 2A-9P GRATED DROP INLET	05/31/07
2 H-10 ●	TYPE A-9 OR A-9P STEEL FRAMES 2	05/31/07
2 H-11 ●	TYPE A-9 AND A-9P STEEL GRATES	05/31/07
H-12	TYPE 61614P AND 1211214P GRATED DROP INLET	05/31/07
1 H-13 ●	TYPE 61616P AND 1211216P GRATED DROP INLET	05/31/07
H-14	TYPE 61214P GRATED DROP INLET	05/31/07
H-15 ●	TYPE 1211214, 1211214P, 1211216, 1211216P STEEL FRAME AND GRATES	
H-16 1 ●	TYPE 61614, 61614P, 61616, 61616P STEEL FRAME AND GRATES	
H-17	TYPE 61214 STEEL FRAMES AND GRATES	05/31/07
H-18	TYPE 61214P STEEL GRATES	05/31/07
H-19	TYPE 61614B STEEL FRAME AND GRATES	05/31/07
H-20 ●	CEMENT RUBBLE MASONRY STRUCTURES	05/31/07
H-21 ●	CONCRETE AND CEMENT RUBBLE MASONRY STRUCTURES	05/31/07
H-22 ●	INLET/OUTLET STRUCTURE	05/31/07
H-23 ●	INLET/OUTLET STRUCTURE	05/31/07
H-24	FLARED END SECTION FOR CULVERTS	05/31/07
H-25	FLARED END SECTION FOR CULVERTS	05/31/07
H-26	CONCRETE SPILLWAY INLET	05/31/07
H-27 ●	CAP COUPLING DETAILS STANDARD JOINT	05/31/07
H-28 ●	REINFORCED CONCRETE COLLAR & JACKET	05/31/07
H-29	UNDERDRAIN CLEANOUT STEEL FRAME AND COVER	05/31/07
H-30	UNDERDRAIN CONNECTION TO DRAINAGE STRUCTURE	05/31/07

TE-01 ●	SIGN HEIGHT AND LOCATION	07/11/08
TE-1A ●	SIGN INSTALLATION	07/11/08
TE-02A	GALVANIZED FLANGED CHANNEL SIGN POST MOUNTING	05/31/07
TE-02B	GALVANIZED FLANGED CHANNEL SIGN POST MOUNTING	05/31/07
TE-02C	GALVANIZED FLANGED CHANNEL SIGN POST MOUNTING	05/31/07
TE-03A ●	GALVANIZED SQUARE TUBE SIGN POST MOUNTING	05/31/07
TE-03B ●	GALVANIZED SQUARE TUBE SIGN POST MOUNTING	05/31/07
TE-04 ●	REGULATORY SIGNS	07/11/08
TE-05 ●	WARNING SIGNS	07/11/08
TE-06 ●	MISCELLANEOUS SIGNS	07/11/08
TE-07 ●	CONSTRUCTION SIGNS	07/11/08
TE-08 ●	MISCELLANEOUS INTERSECTION SIGNS	07/11/08

STANDARD PLAN NO.	TITLE	DATE
TE-09 ●	BIKE ROUTE SIGN & SUPPLEMENTARY PLATES	07/11/08
TE-10	INTERSTATE ROUTE MARKER	07/11/08
TE-11 ●	STATE ROUTE MARKER AND AUXILIARY MARKERS	07/11/08
TE-12 ●	STATE ROUTE MARKER AND BORDER DETAIL FOR GUIDE SIGNS	07/11/08
TE-12A ●	ROUTE SIGN ASSEMBLIES	07/11/08
TE-13 ●	STREET NAME SIGN ON MAST ARM	07/11/08
TE-14 ●	MISCELLANEOUS REFLECTOR MARKERS	07/11/08
TE-15 ●	OBJECT MARKERS	07/11/08
TE-16 ●	MILE POSTS	07/11/08
TE-17A	CANTILEVER OVERHEAD SIGN ELEVATION & DETAILS	05/31/07
TE-17B	CANTILEVER SIGN FRAME DETAIL AND SECTION	05/31/07
TE-17C	CANTILEVER SIGN FRAME DETAIL	05/31/07
TE-17D	CANTILEVER SIGN FRAME SECTION	05/31/07
TE-17E	CANTILEVER SIGN FRAME DETAILS	05/31/07
TE-18A	TWO POST OVERHEAD SIGN FRAME ELEVATIONS	05/31/07
TE-18B	TWO POST SIGN FRAMING PLAN SECTION	05/31/07
TE-18C	TWO POST SIGN FRAMING SECTIONS AND DETAILS	05/31/07
TE-18D	TWO POST SIGN FRAME DETAILS	05/31/07
TE-18E	TWO POST SIGN FRAME DETAILS	05/31/07
TE-19A	OVERHEAD SIGN FRAMING SCHEDULE	05/31/07
TE-19B	SIGN POST DRILLED SHAFT FOUNDATION	05/31/07
TE-19C	SPREAD FOOTING	05/31/07
TE-19D	SIGN FRAME FOUNDATION SCHEDULE	05/31/07
TE-19D.1	SIGN FRAME FOUNDATION SCHEDULE	05/31/07
TE-19D.2	SIGN FRAME FOUNDATION SCHEDULE	05/31/07
TE-19D.3	SIGN FRAME FOUNDATION SCHEDULE	05/31/07
TE-19D.4	SIGN FRAME FOUNDATION SCHEDULE	05/31/07
TE-19D.5	SIGN FRAME FOUNDATION SCHEDULE	05/31/07
TE-19E	ANCHORAGE DETAILS	05/31/07
TE-19F	ANCHORAGE DETAILS	05/31/07
TE-19G	MISCELLANEOUS SIGN FRAME DETAILS	05/31/07
TE-19H	LUMINAIRE WALKWAY SUPPORT	05/31/07
TE-19J	FIXED MESSAGE LUMINAIRE SUPPORT	05/31/07
TE-19K	MISCELLANEOUS SIGN DETAILS	05/31/07
TE-19L	MISCELLANEOUS SIGN DETAILS	05/31/07
TE-19M	MISCELLANEOUS SIGN FRAME DETAILS	05/31/07
TE-20 ●	SUPPORTS FOR GROUND MOUNTED GUIDE SIGN	05/31/07
TE-20A ●	SUPPORTS FOR GROUND MOUNTED GUIDE SIGN	05/31/07
TE-20B ●	SUPPORTS FOR GROUND MOUNTED GUIDE SIGN	05/31/07
TE-20C ●	SUPPORTS FOR GROUND MOUNTED GUIDE SIGN	05/31/07
TE-21A ●	SIGN BREAKAWAY MOUNTS	05/31/07
TE-21B ●	SIGN BREAKAWAY MOUNTS	05/31/07
TE-22	LAMINATED ALUMINUM SIGN PANELS (OVERHEAD)	05/31/07
TE-23	LAMINATED ALUMINUM SIGN PANELS (GROUND MOUNTED)	07/11/08

NOTE:
STANDARD PLANS APPLICABLE TO THIS PROJECT ARE INDICATED BY A " ● " NEXT TO THE STANDARD PLAN NO.
(FOR EXAMPLE: D-07 ●)

LEGEND FOR AS-BUILT POSTINGS	
~~~~~	Squiggly line for as-built deletion
<del>~~~~~</del>	Double line for as-built deletion
Roadway	Text for as-built posting



THIS WORK WAS PREPARED BY ME OR UNDER MY SUPERVISION AND CONSTRUCTION OF THIS PROJECT WILL BE UNDER MY OBSERVATION.  
*Austen W. Drake*  
SIGNATURE  
APRIL 30, 2018  
EXPIRATION DATE OF THE LICENSE

STANDARD PLAN NO.	TITLE	DATE
TE-24	SOLID ALUMINUM EXTRUDED SIGN PANEL AND ACCESSORY DETAILS	05/31/07
TE-25	GUIDE SIGNS LUMINAIRE MOUNTINGS	05/31/07
TE-26 ●	RAISED PAVEMENT MARKERS AND STRIPING	07/11/08
TE-27 ●	RAISED PAVEMENT MARKERS AND STRIPING	07/11/08
TE-28 ●	ENTRANCE AND EXIT PAVEMENT MARKINGS	07/11/08
TE-28A ●	MISCELLANEOUS PAVEMENT MARKINGS	07/11/08
TE-29 ●	PAVEMENT ARROWS AND SYMBOLS	07/11/08
TE-30 ●	PAVEMENT ALPHABETS, NUMBERS & SYMBOLS	07/11/08
TE-31 ●	PAVEMENT ALPHABETS, NUMBERS & SYMBOLS	07/11/08
TE-32 ●	TYPE I & II TRAFFIC SIGNAL SYSTEM MISC. DETAILS	05/31/07
TE-33 ●	TYPE II TRAFFIC SIGNAL SYSTEM	08/16/06
TE-33A.1 ●	TYPE II TRAFFIC SIGNAL STANDARD	05/31/07
TE-33A.2 ●	TYPE II TRAFFIC SIGNAL STANDARD	05/31/07
TE-34 ●	LOOP DETECTOR DETAILS	07/11/08
TE-35 ●	LOOP DETECTORS & DUCT DETAILS	07/11/08
TE-36 ●	TRAFFIC SIGNAL DETAILS	07/11/08
TE-37 ●	PULLBOX & COVER DETAILS	07/11/08
TE-37A	TYPE "A" TRAFFIC PULLBOX	05/31/07
TE-37B	TYPE "A" TRAFFIC PULLBOX REINFORCING	05/31/07
TE-37C	TYPE "B" TRAFFIC PULLBOX	05/31/07
TE-37D	TYPE "B" TRAFFIC PULLBOX REINFORCING	05/31/07
TE-37E	TYPE "B" TRAFFIC PULLBOX FOUNDATION	05/31/07
TE-37F	TYPE "C" TRAFFIC PULLBOX	05/31/07
TE-37G	TYPE "C" TRAFFIC PULLBOX REINFORCING	05/31/07
TE-37H	TYPE "C" TRAFFIC PULLBOX FOUNDATION	05/31/07
TE-37J	TRAFFIC PULLBOX COVER AND DETAILS	05/31/07
TE-38 ●	TYPE III TRAFFIC SIGNAL STANDARD	05/31/07
TE-38A.1 ●	TYPE III TRAFFIC SIGNAL STANDARD	05/31/07
TE-38A.2 ●	TYPE III TRAFFIC SIGNAL STANDARD	05/31/07
TE-39	METAL GUARDRAIL CONNECTION TO CONCRETE BARRIER	07/11/08
TE-40	CONCRETE BARRIER TRANSITION	05/31/07
TE-40A	CONCRETE BARRIER TRANSITION SECTIONS	05/31/07
2 TE-41	GUARDRAIL TYPE 4 (RIGID BARRIER)	05/31/07
TE-42	PORTABLE CONCRETE BARRIER	05/31/07
TE-43	PORTABLE CONCRETE BARRIER	05/31/07
2 TE-44	GUARDRAIL TYPE 4 MISCELLANEOUS DETAILS	07/11/08
TE-45 ●	BARRICADES	07/11/08
TE-46 ●	DELINEATION & PAVEMENT MARKINGS AT NARROW BRIDGES	07/11/08
TE-47 ●	HIGHWAY LIGHT STANDARD	05/31/07

8/1/16	2 Added H-10 & H-11; Removed TE-41 & TE-44
1/22/16	1 Added D-02, D-05, H-03, H-07, H-09, H-13, H-16, TE-41 & TE-44
DATE	REVISION

STATE OF HAWAII  
DEPARTMENT OF TRANSPORTATION  
HIGHWAYS DIVISION

STANDARD PLANS SUMMARY

QUEEN KAAHUMANU HIGHWAY WIDENING  
Kealakehe Pkwy. To Keahole Airport Rd.(Ph. 2)  
Federal Aid Project No. NH-019-1(38)R  
Scale: AS NOTED Date: AUGUST 2016

SHEET No. 1 OF 1 SHEETS

"AS-BUILT"

4/11/2016 5:38 PM

C.O. 2