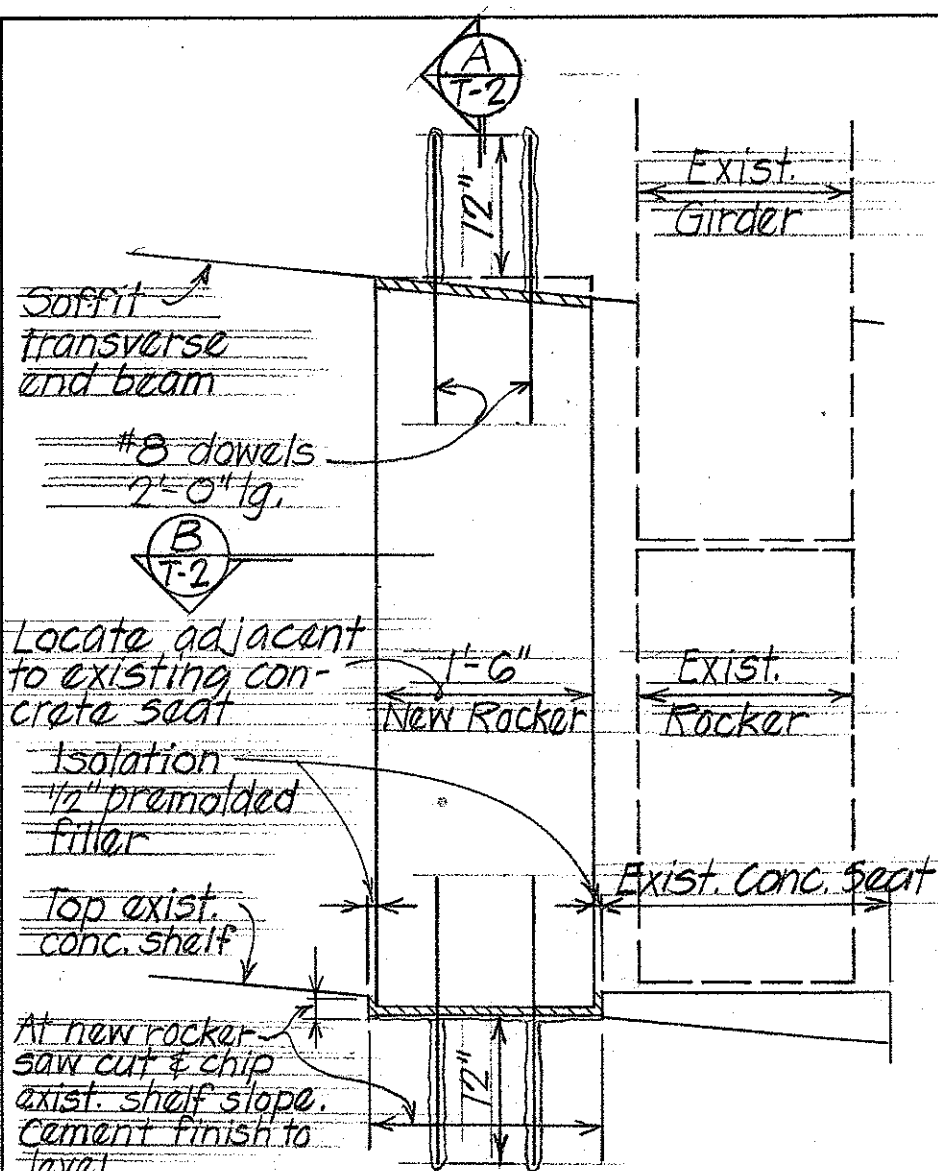
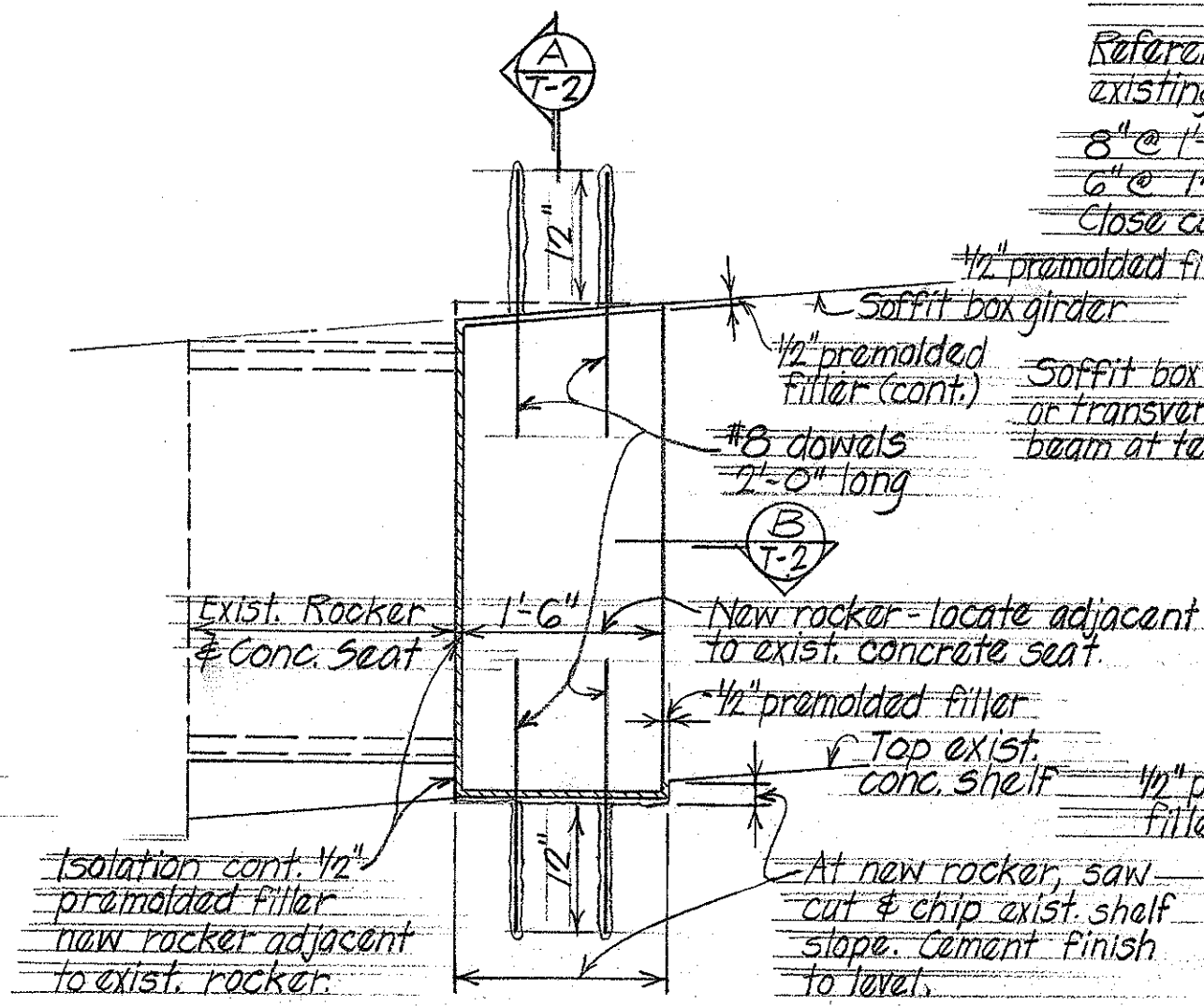


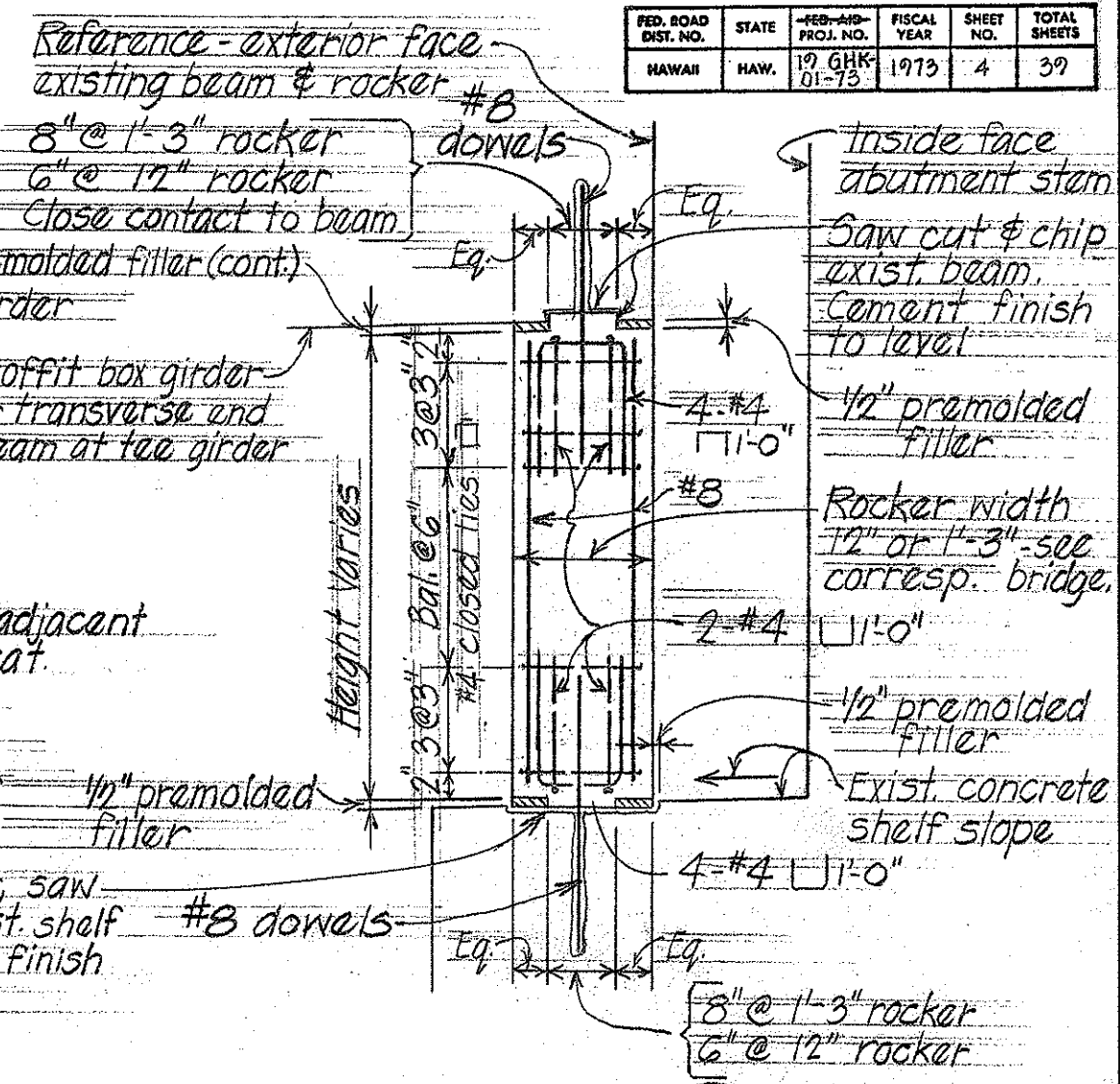
FED. ROAD DIST. NO.	STATE	FED-AID PROJ. NO.	FISCAL YEAR	SHEET NO.	TOTAL SHEETS
HAWAII	HAW.	19 GHK-01-73	1973	4	39



ROCKER TYPE R-1
Scale: 3/4" = 1'-0"

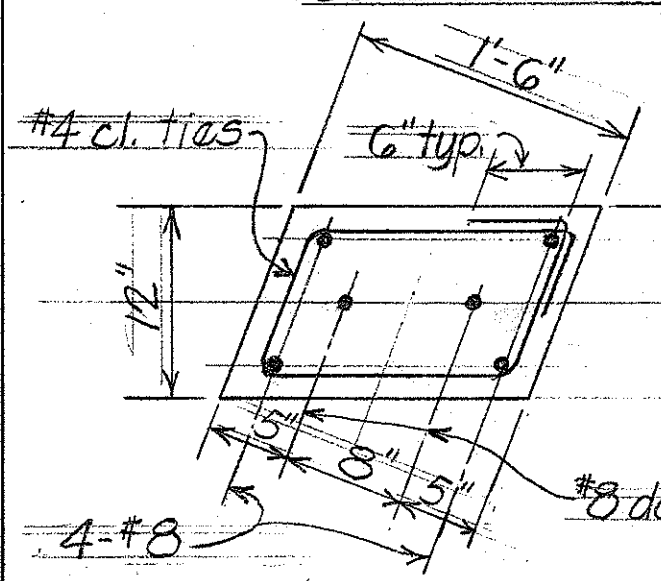


ROCKER TYPE R-3
Scale: 3/4" = 1'-0"

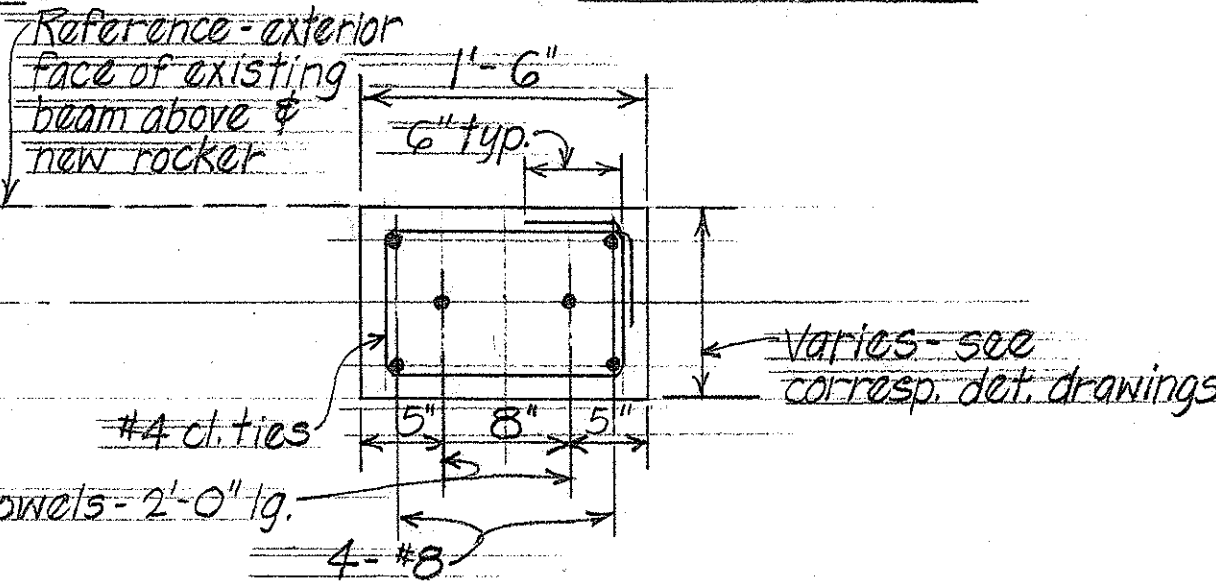


SECTION A-T-2 Scale: 3/4" = 1'-0"

Note: At each #8 dowel drill 2" ϕ hole into exist. beam or shelf & grout after dowel is in place.



AT SKEWED ABUTMENT



AT ABUTMENT NORMAL TO BRIDGE

TYPICAL ROCKER SECTION B-T-2 Scale: 1" = 1'-0"

STATE OF HAWAII
DEPARTMENT OF TRANSPORTATION
HIGHWAYS DIVISION
REHABILITATION & REPAIRS
TO BRIDGES
TYPICAL DETAILS
PROJ. NO. 19 GHK-01-73 Nov. 1973
SHEET No. T2 OF 2 SHEETS

DATE
DESIGNED BY
DRAWN BY
CHECKED BY
APPROVED BY