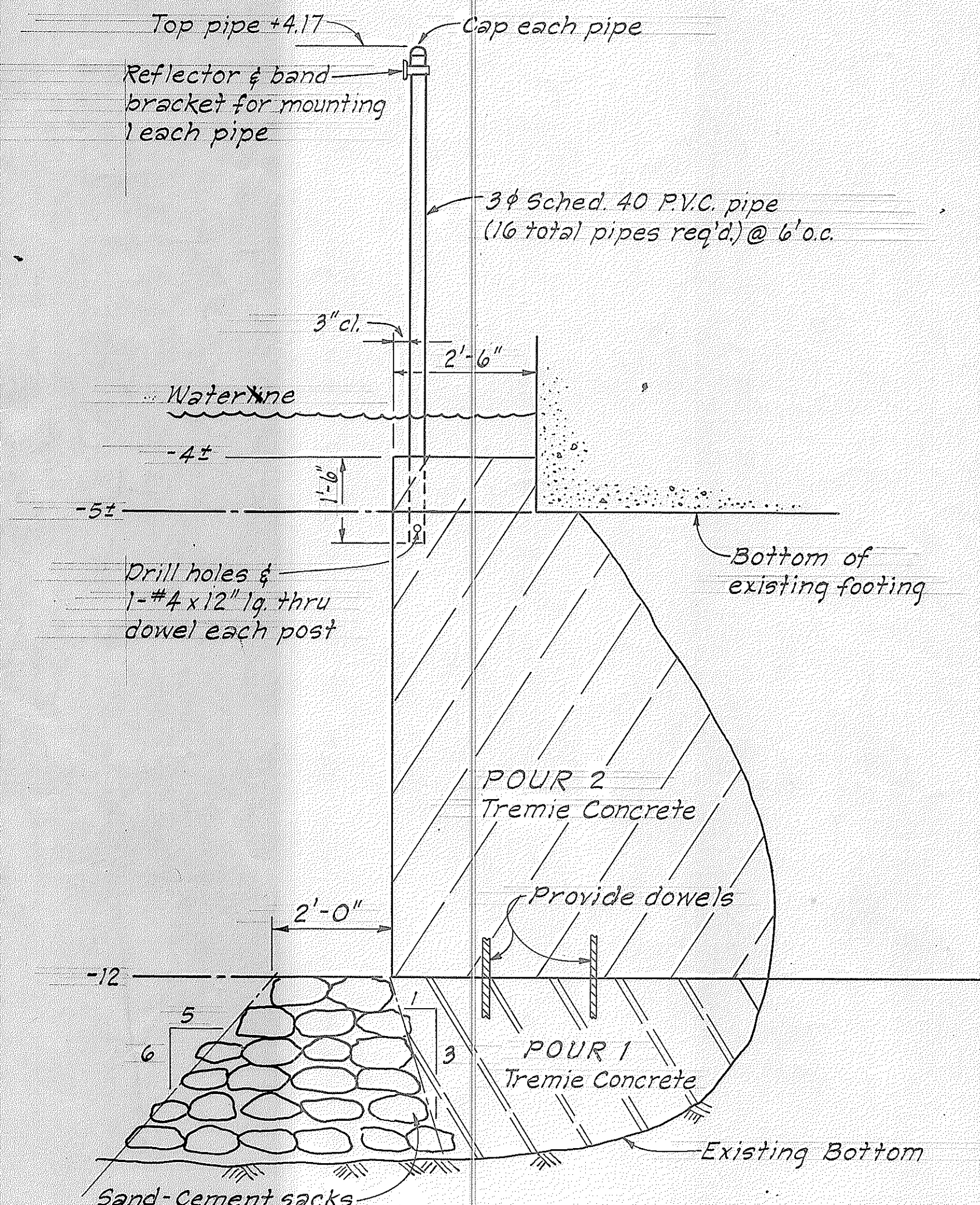
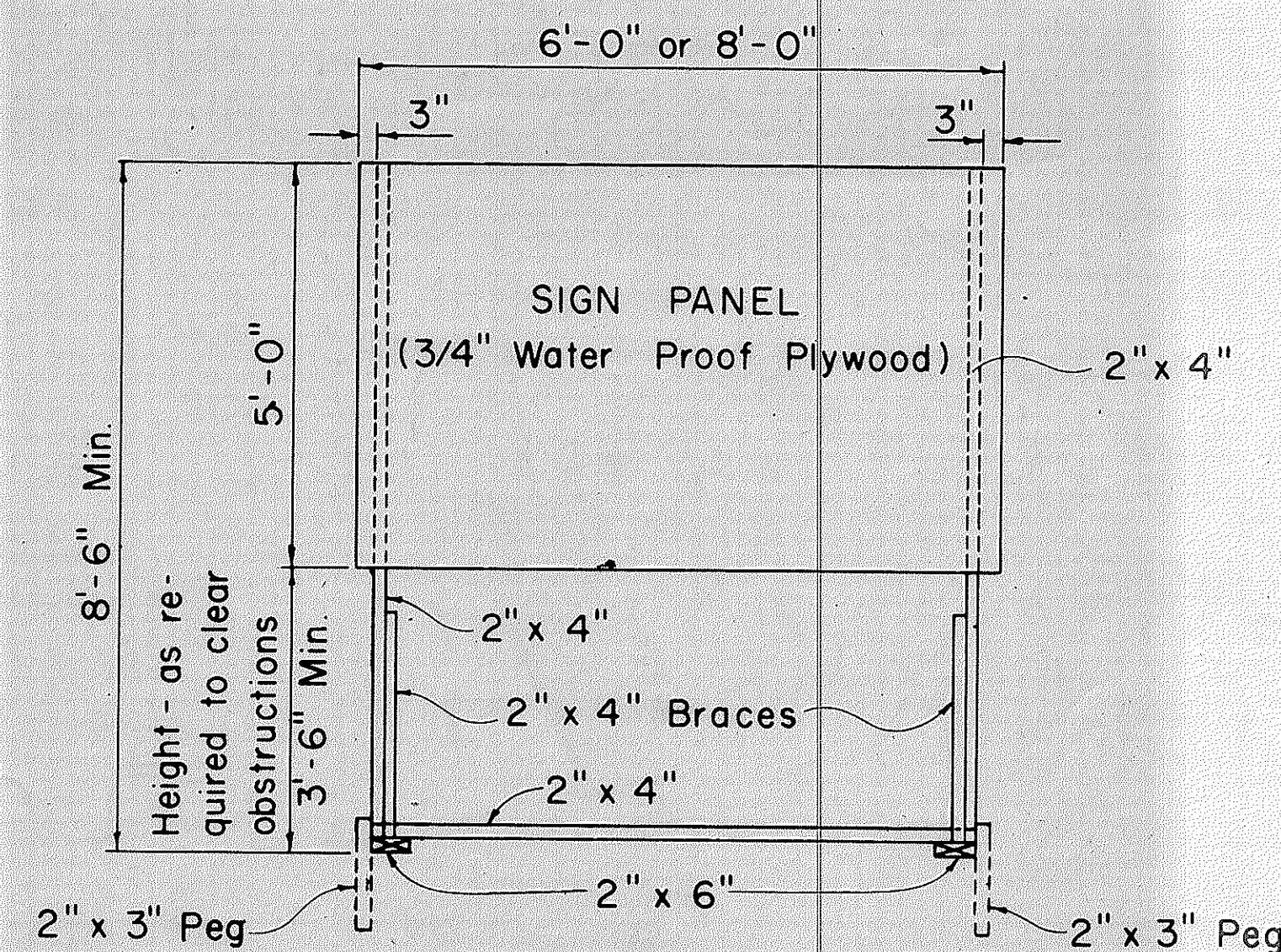


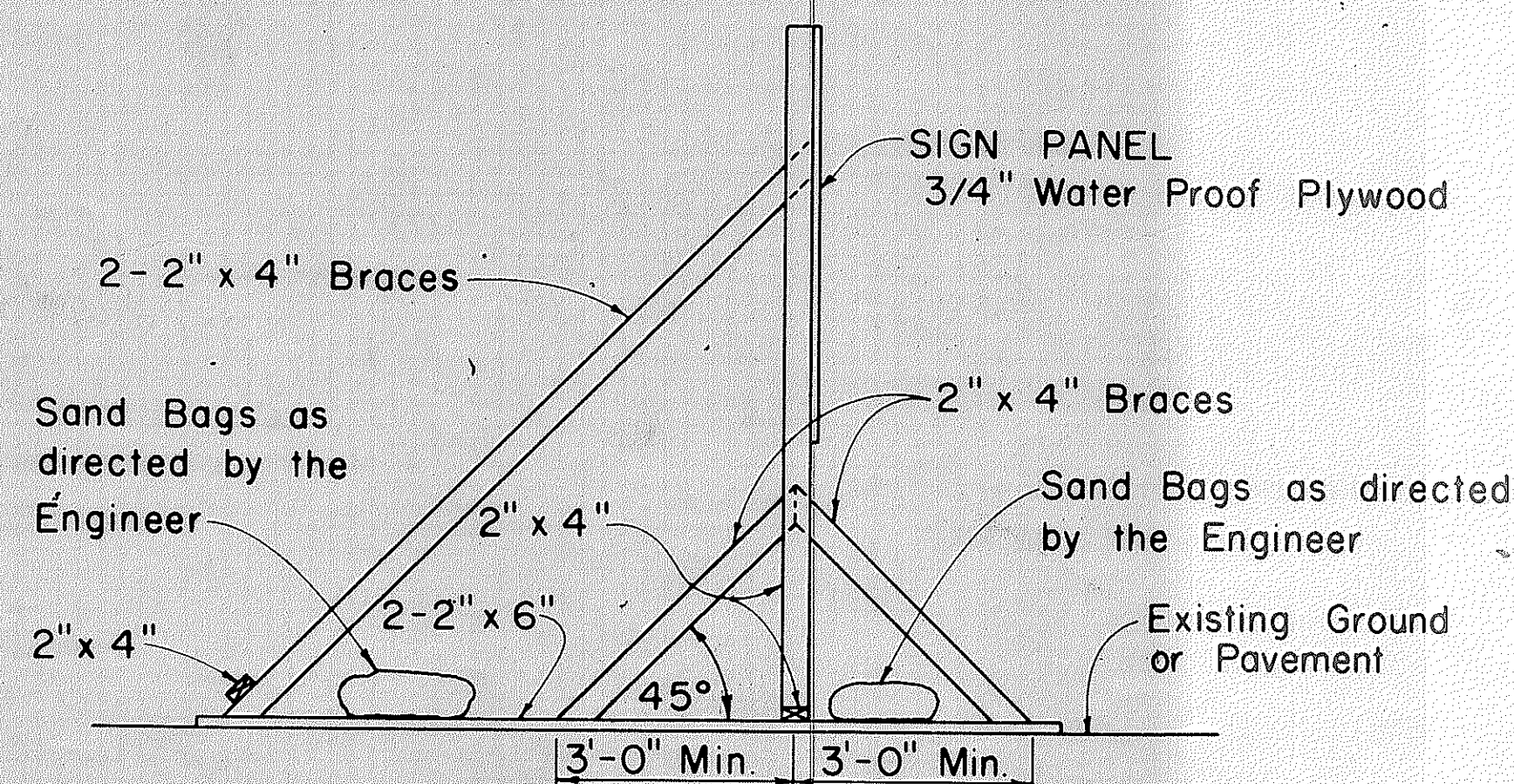
FED. ROAD DIST. NO.	STATE	PROJ. NO.	FISCAL YEAR	SHEET NO.	TOTAL SHEETS
HAWAII	HAW.	19L-01-73	1973	5	5



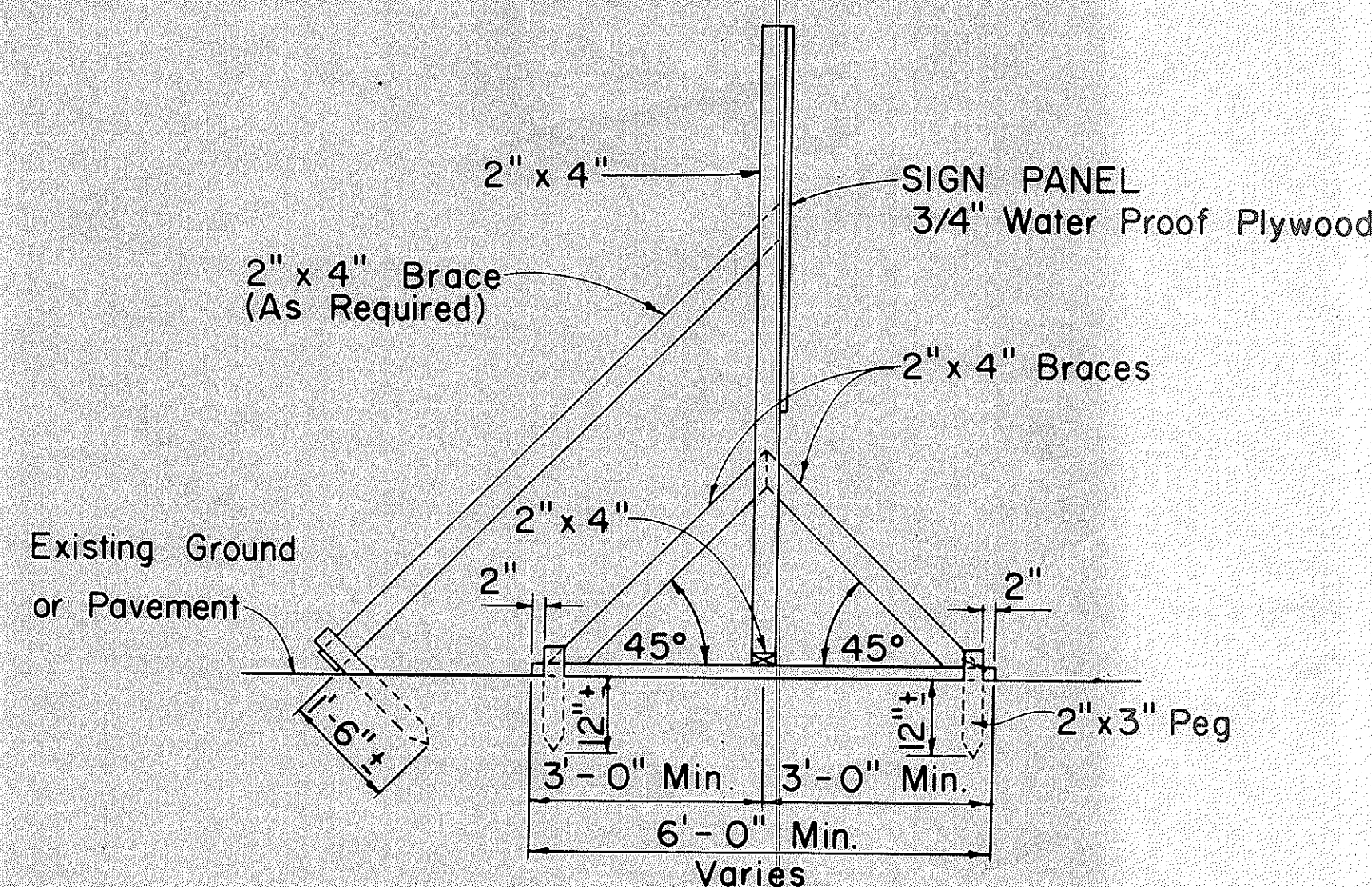
TYPICAL SECTION
WAILOA RIVER BRIDGE EMERGENCY REPAIRS
PROJ. NO. 19L-01-73



FRONT VIEW
 Scale: 1/2" = 1'-0"

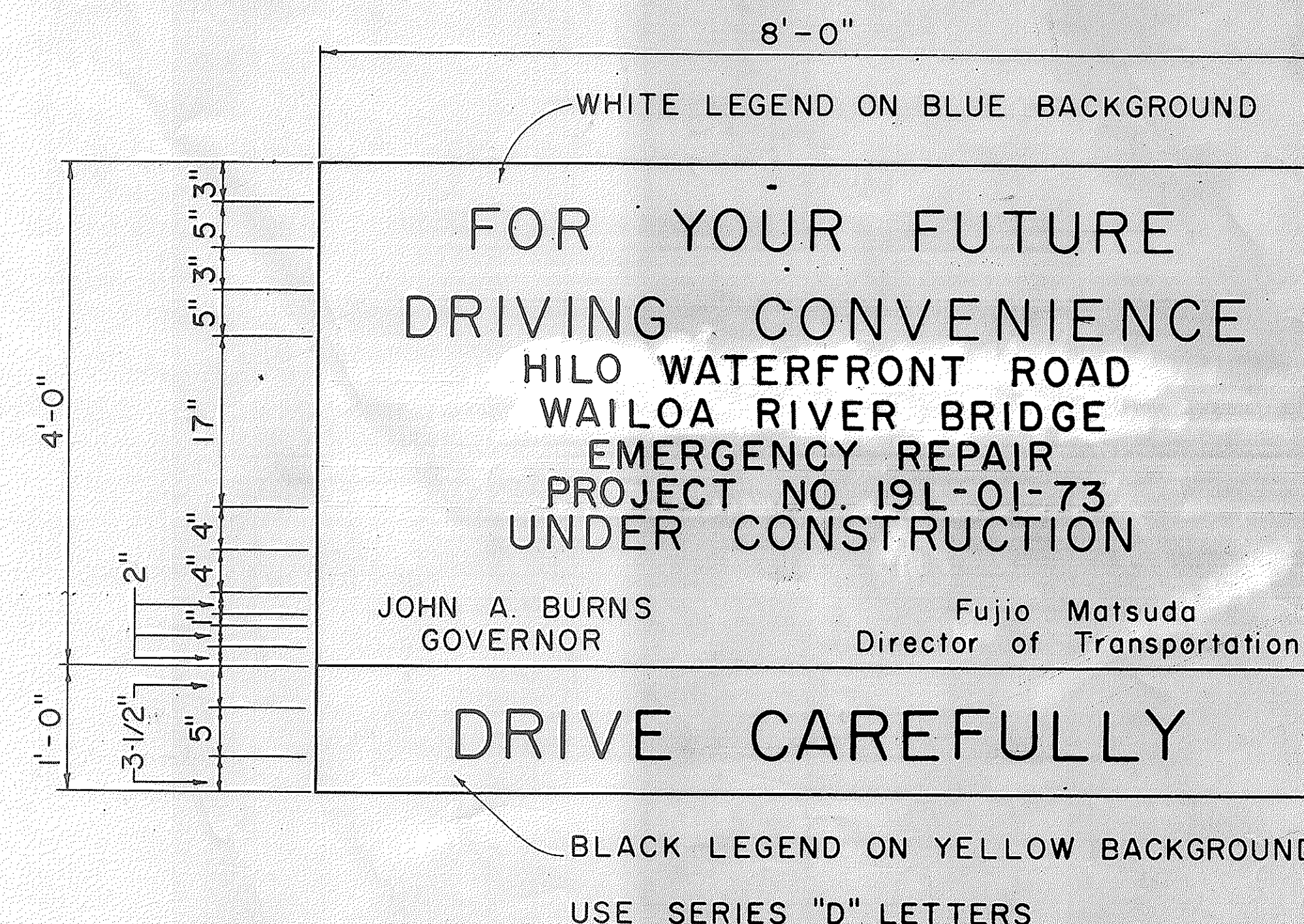


SIDE VIEW
 (SIGN SUPPORT AND FRAME WEIGHTED DOWN)
 Scale: 1/2" = 1'-0"



SIDE VIEW
 (SIGN SUPPORT AND FRAME ANCHORED IN GROUND)
 Scale: 1/2" = 1'-0"

SIGN SUPPORT AND FRAME
 Scale: As Shown



STATE OF HAWAII
 DEPARTMENT OF TRANSPORTATION
 HIGHWAYS DIVISION
TYPICAL DETAILS
 PROJECT INFORMATION SIGN
 AND REVISED TYPICAL SECTION
 Scale: As Shown
SHEET No. 1 OF 5 SHEETS