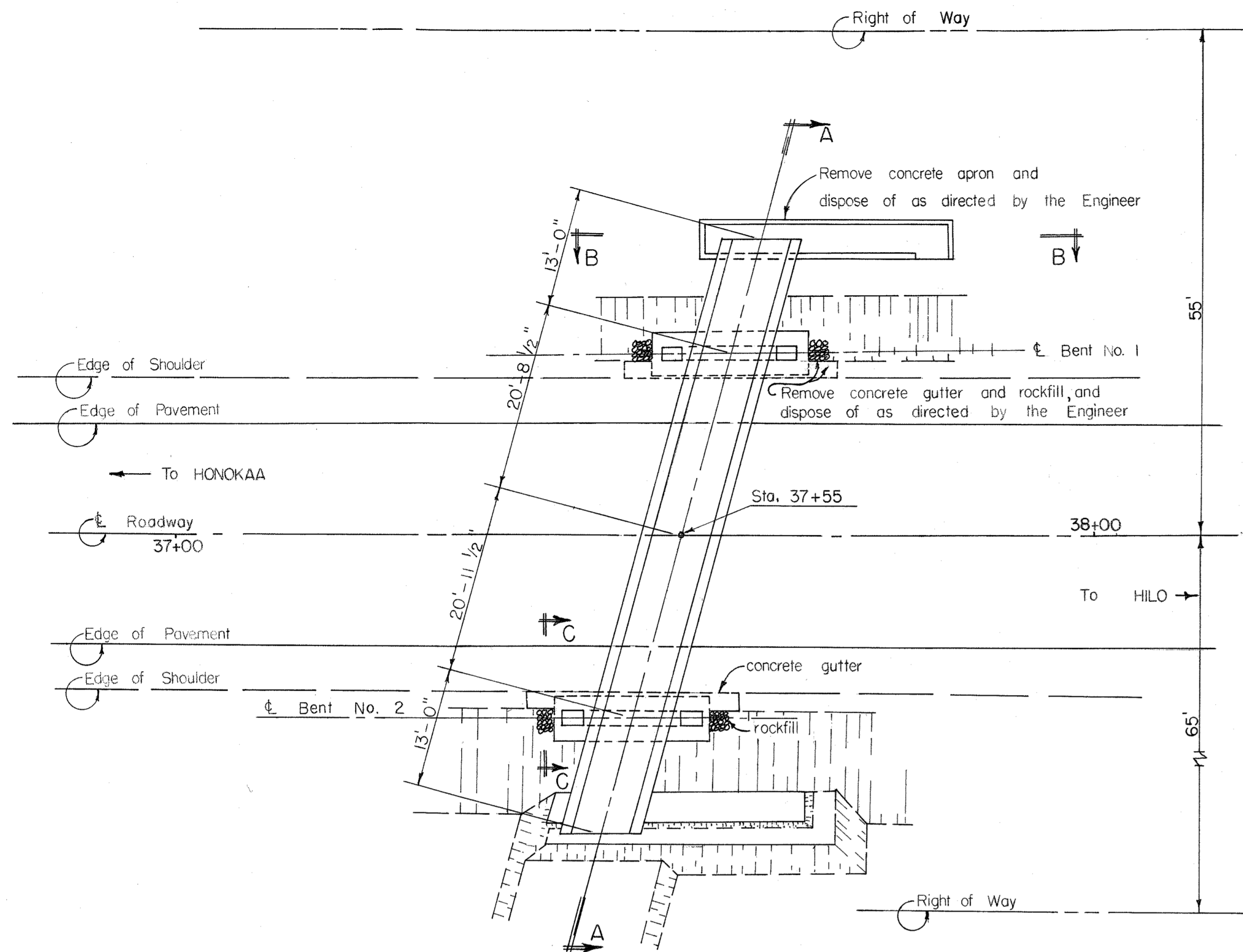
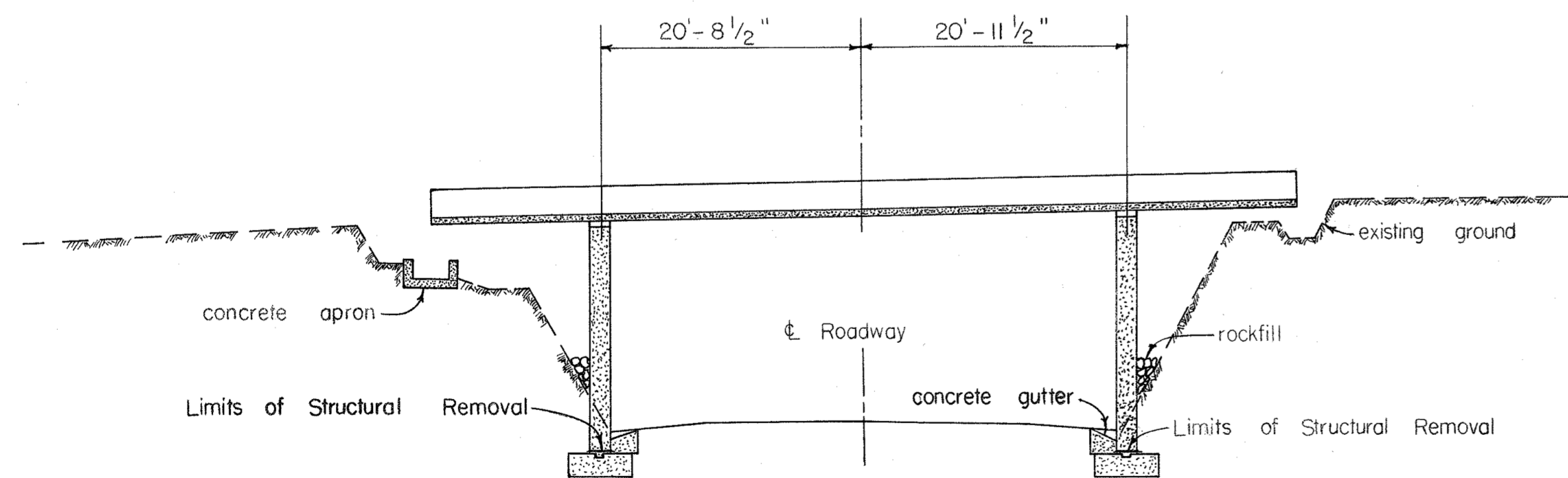


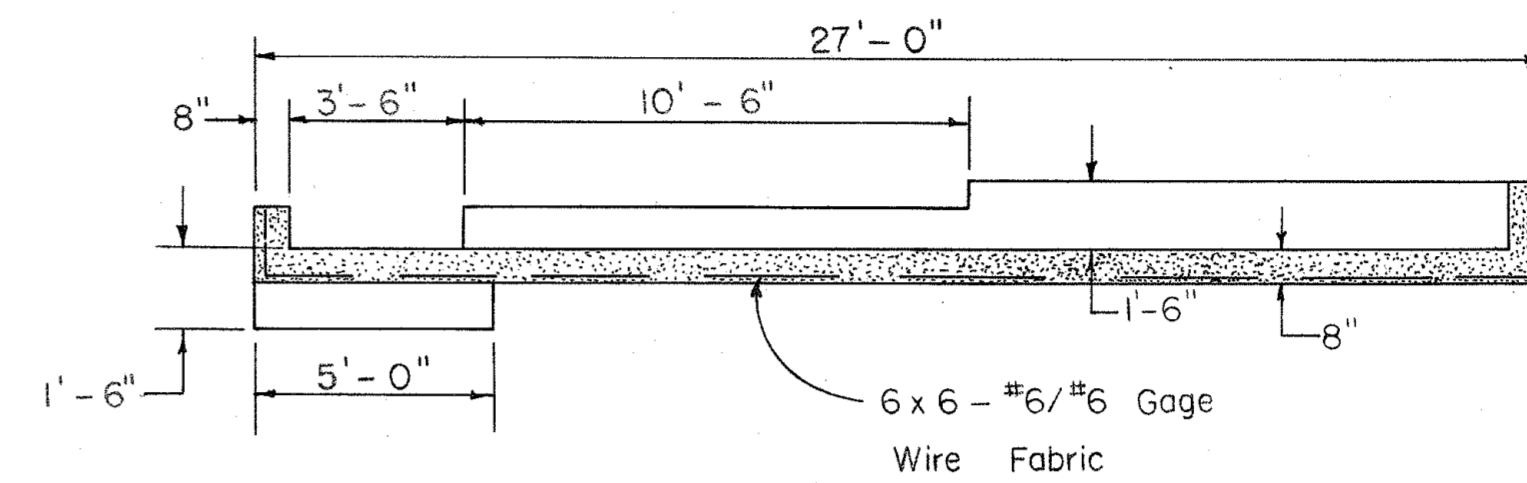
FED. ROAD DIST. NO.	STATE	PROJ. NO.	FISCAL YEAR	SHEET NO.	TOTAL SHEETS
HAWAII	HAW.	19JK-03-72	1973	2	6



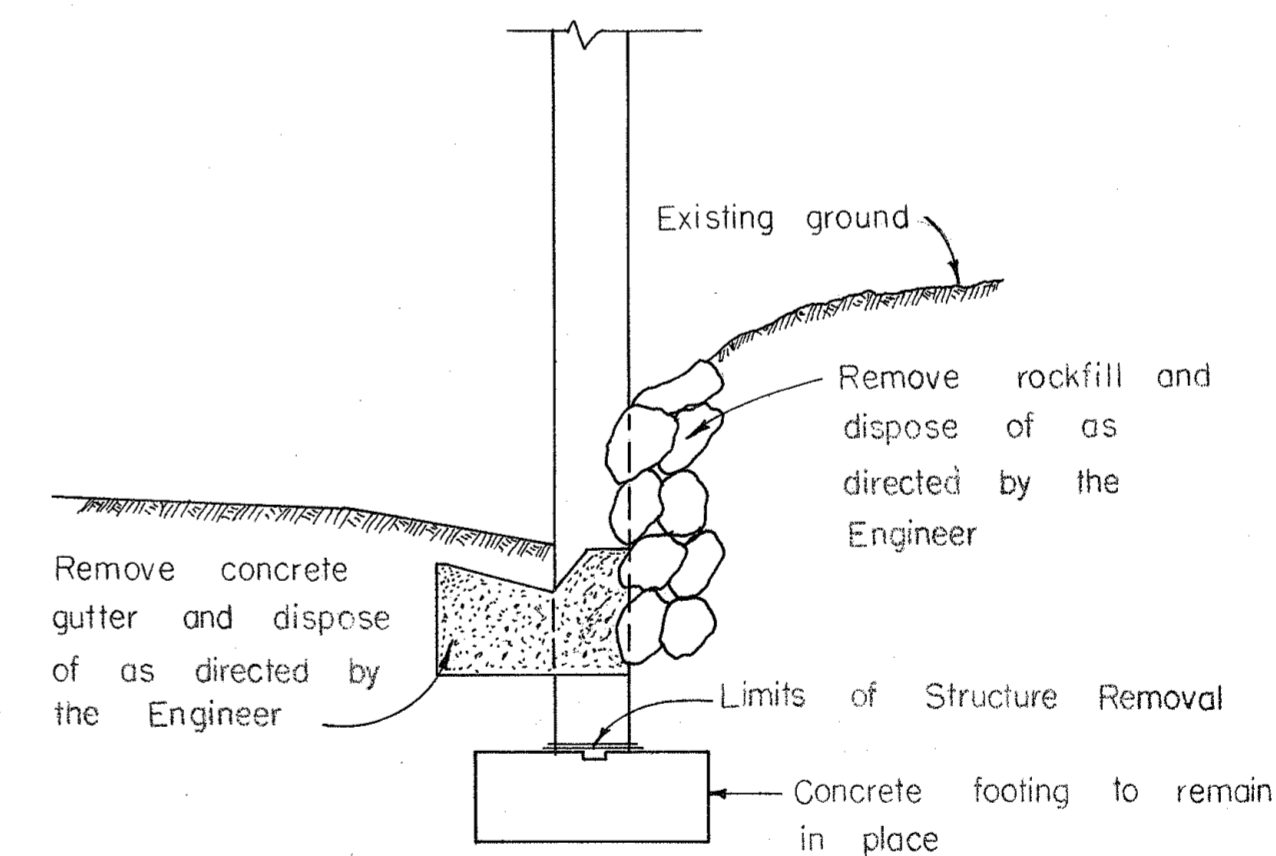
LAYOUT PLAN  
Scale: 1" = 10'-0"



SECTION A-A  
Scale: 1" = 10'-0"



SECTION B-B  
Scale: 1/4" = 1'-0"



SECTION C-C  
Scale: 1/4" = 1'-0"

**NOTE**

For backfilling of trenches, holes, depressions and pits left by removal of structures or miscellaneous highway improvements see Section 208 of the Standard Specifications.

STATE OF HAWAII  
DEPARTMENT OF TRANSPORTATION  
HIGHWAYS DIVISION

WAINAKU CANE FLUME OVERPASS

Sta. 37+55 SDR 3(1)

Removal of Cane Flume Overpasses

Project No. 19 JK-03-72

South Hilo, Hawaii

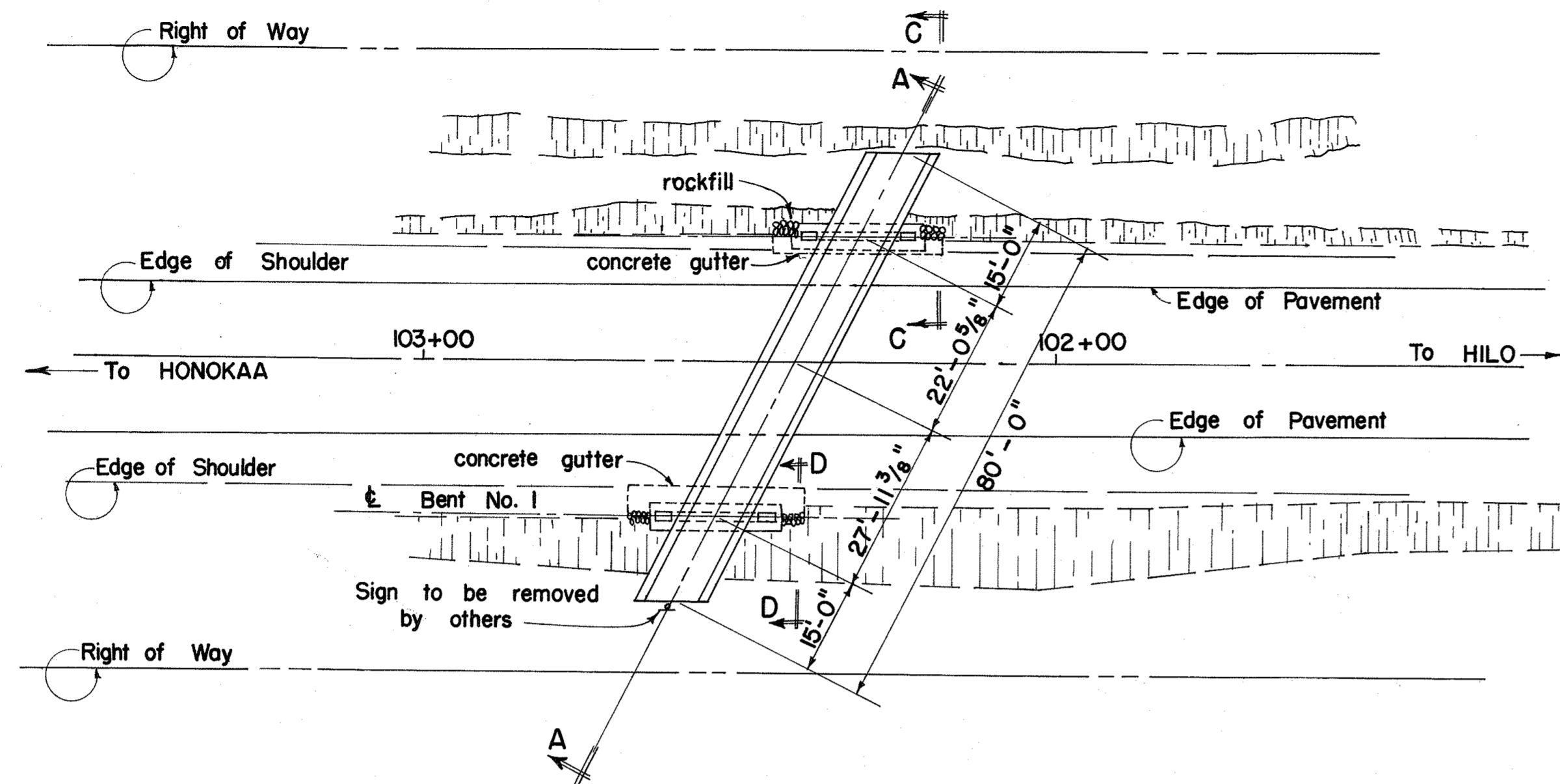
Scale: As Shown

Date: July 1972

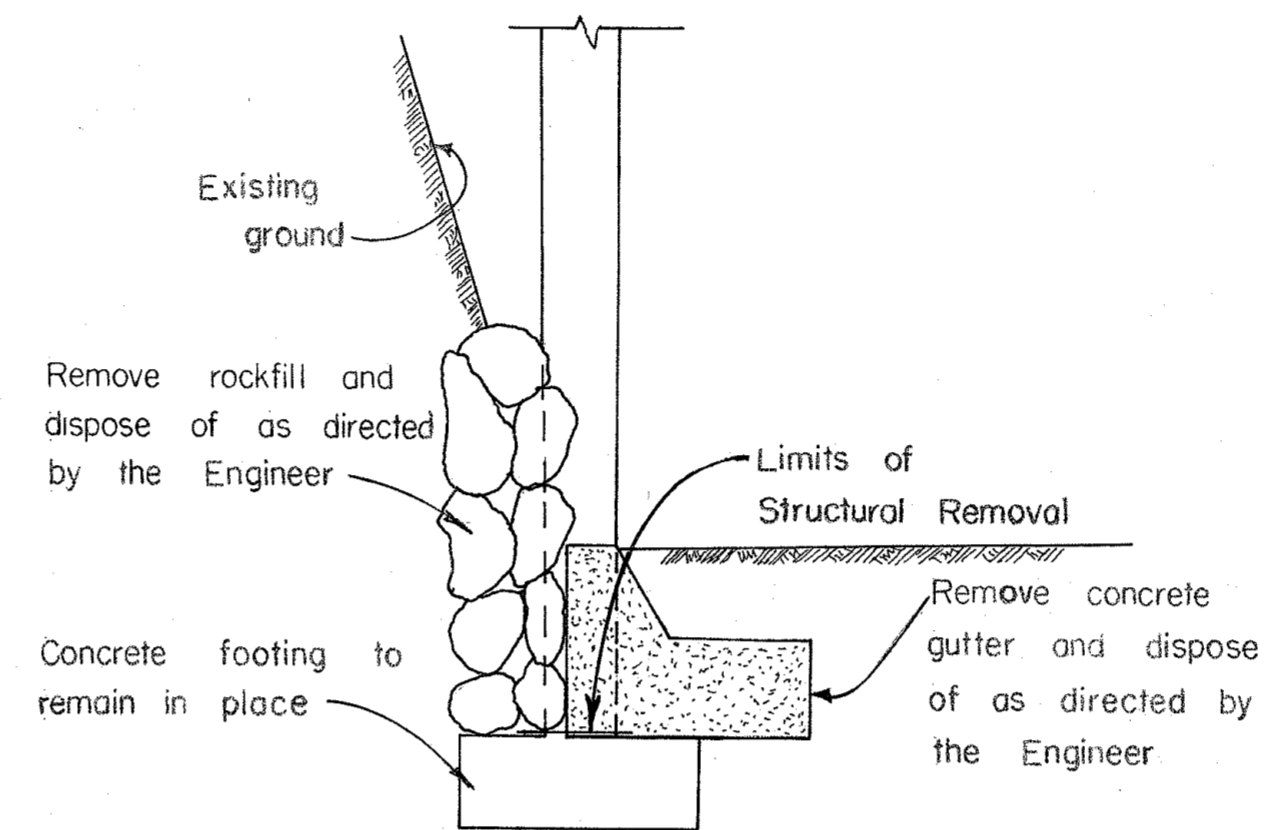
SHEET No. 1 OF 2 SHEETS

ORIGINAL PLAN	DATE
SURVEY PLOTTED BY	
DRAWN BY	
TRACED BY	
CHECKED BY	
NOTE BOOK	
No.	

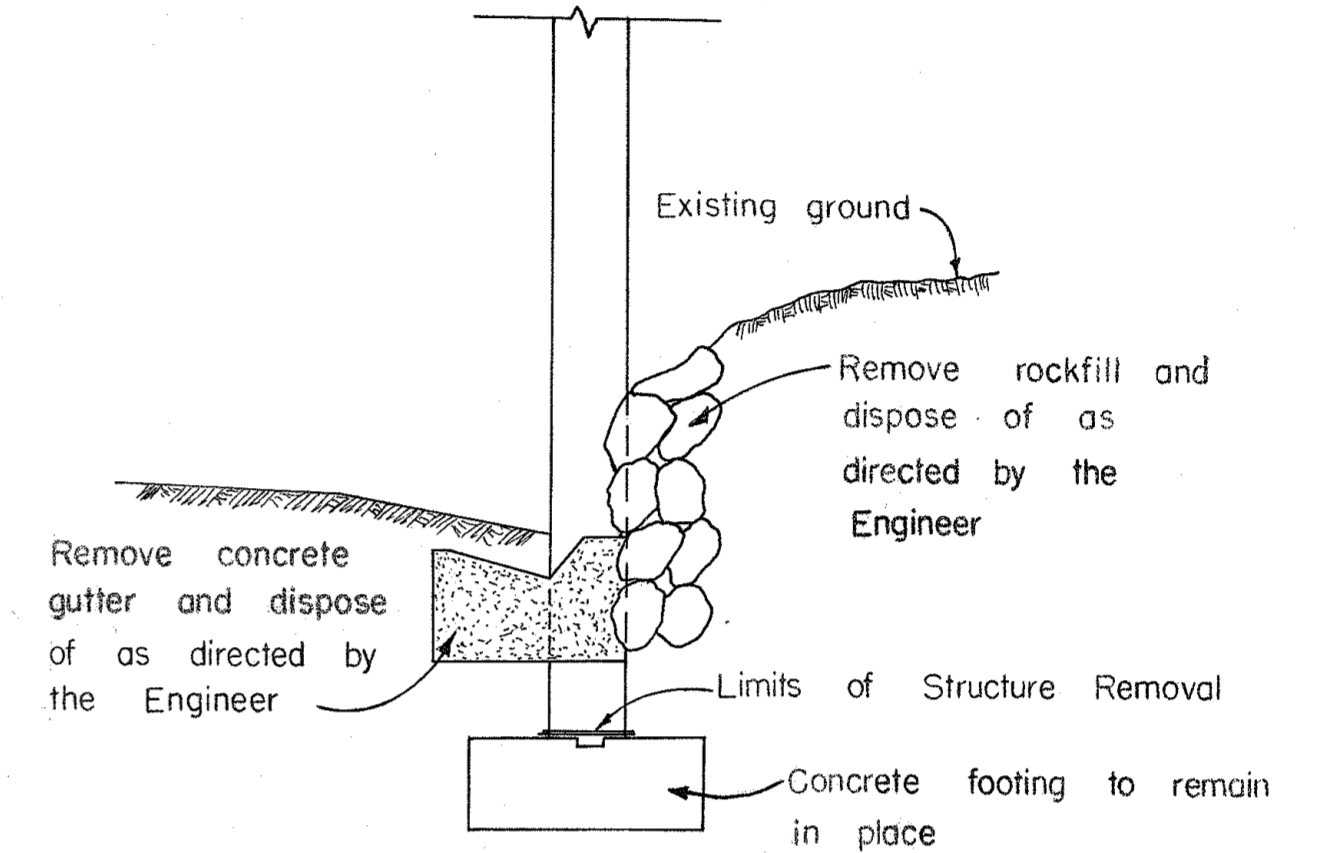
FED. ROAD DIST. NO.	STATE	PROJ. NO.	FISCAL YEAR	SHEET NO.	TOTAL SHEETS
HAWAII	HAW.	19JK-03-72	1973	3	6



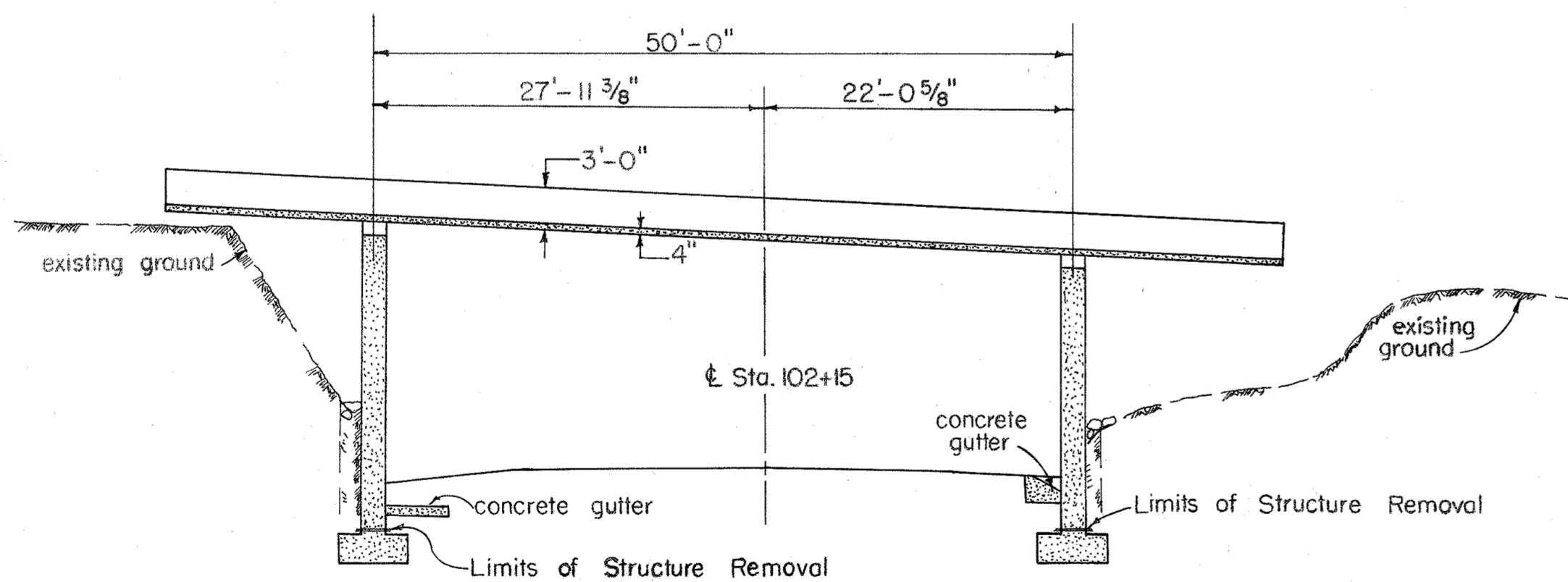
LAYOUT PLAN  
Scale: 1" = 20'-0"



SECTION D-D  
Scale: 1/4" = 1'-0"



SECTION C-C  
Scale: 1/4" = 1'-0"



SECTION A-A  
Scale: 1" = 10'-0"

**NOTE**  
For backfilling of trenches, holes, depressions and pits left by removal of structures or miscellaneous highway improvements see Section 208 of the Standard Specifications.

DATE	DESIGNED BY	CHECKED BY
PLAN	DESIGNED BY	CHECKED BY
NOTE BOOK	DESIGNED BY	CHECKED BY
NO.	DESIGNED BY	CHECKED BY

STATE OF HAWAII DEPARTMENT OF TRANSPORTATION HIGHWAYS DIVISION	
PAPAIOU CANE FLUME OVERPASS	
Sta. 102+15	SDR 3(4)
Removal of Cane Flume Overpasses	
Project No. 19 JK-03-72	
South Hilo, Hawaii	
Scale: As Shown	Date: July 1972
SHEET No. 2 OF 2 SHEETS	