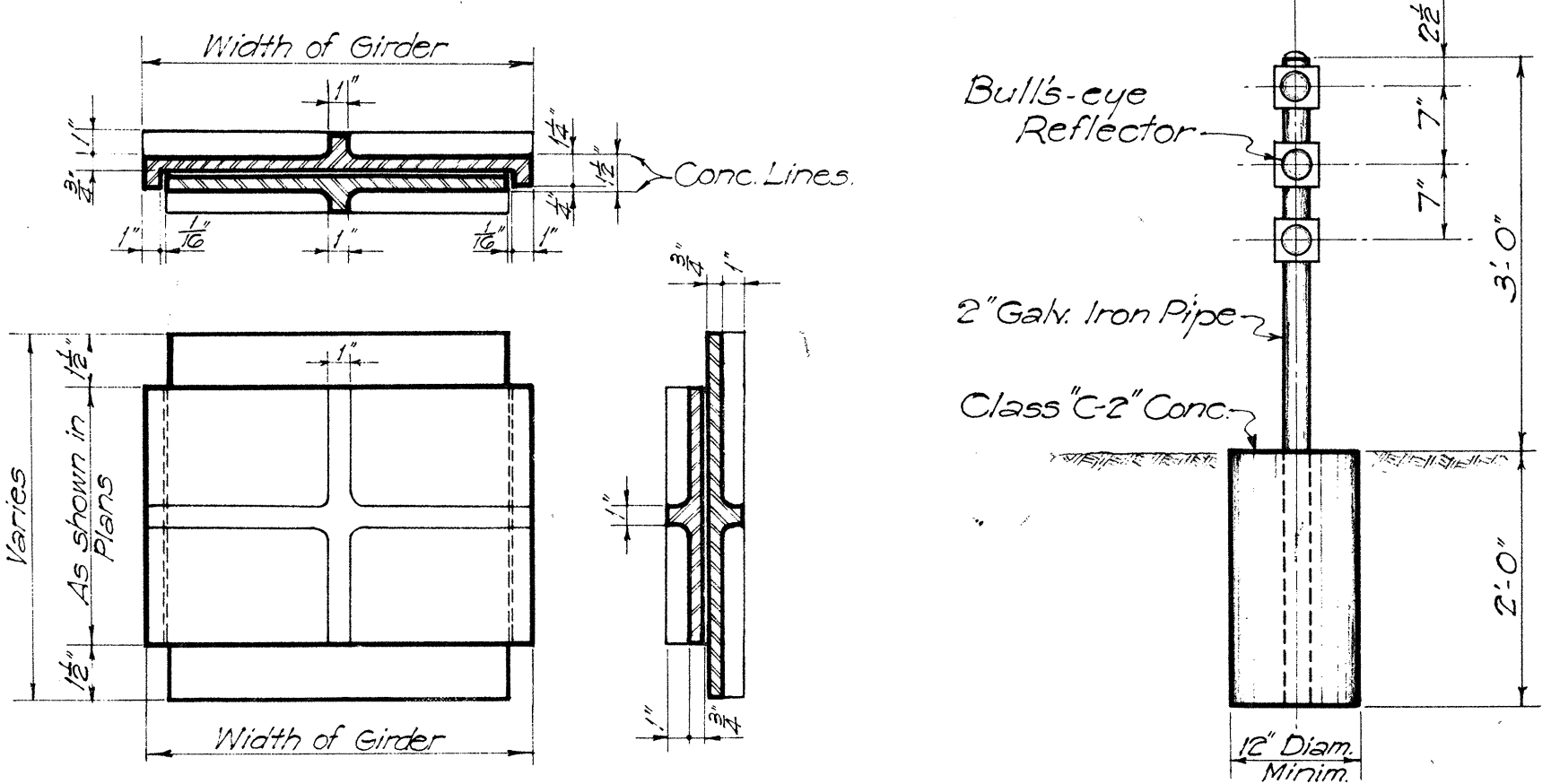


NAME DATE  
 Use correct name of stream  
 LEFT HAND SIDE RIGHT HAND SIDE  
 Date of year built.

**DETAIL OF LETTERS AND FIGURES AT BOTH APPROACHES**

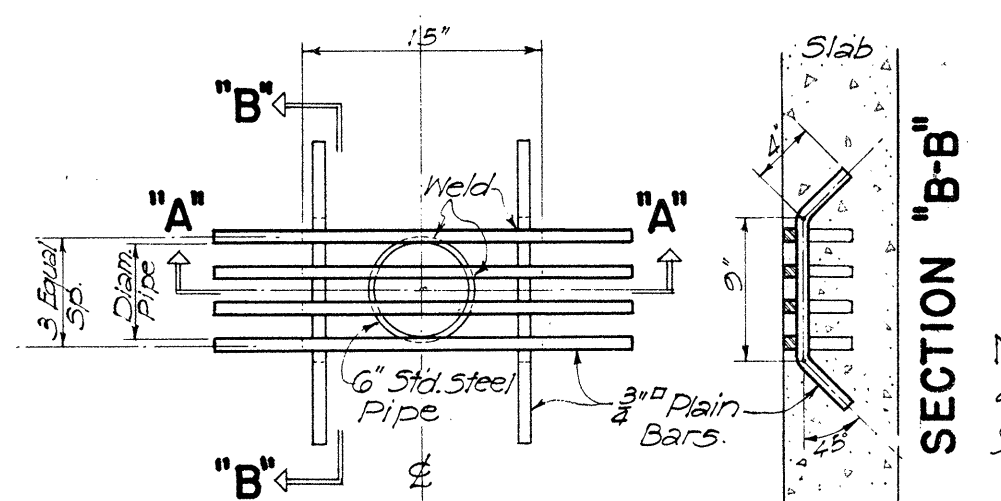
NOTE: Name of stream to be placed in left end post panels and date in right post panels on entering bridge using modified block letters 3" in height.



**EXPANSION PLATES**  
 Scale: 1/2" = 1'-0"

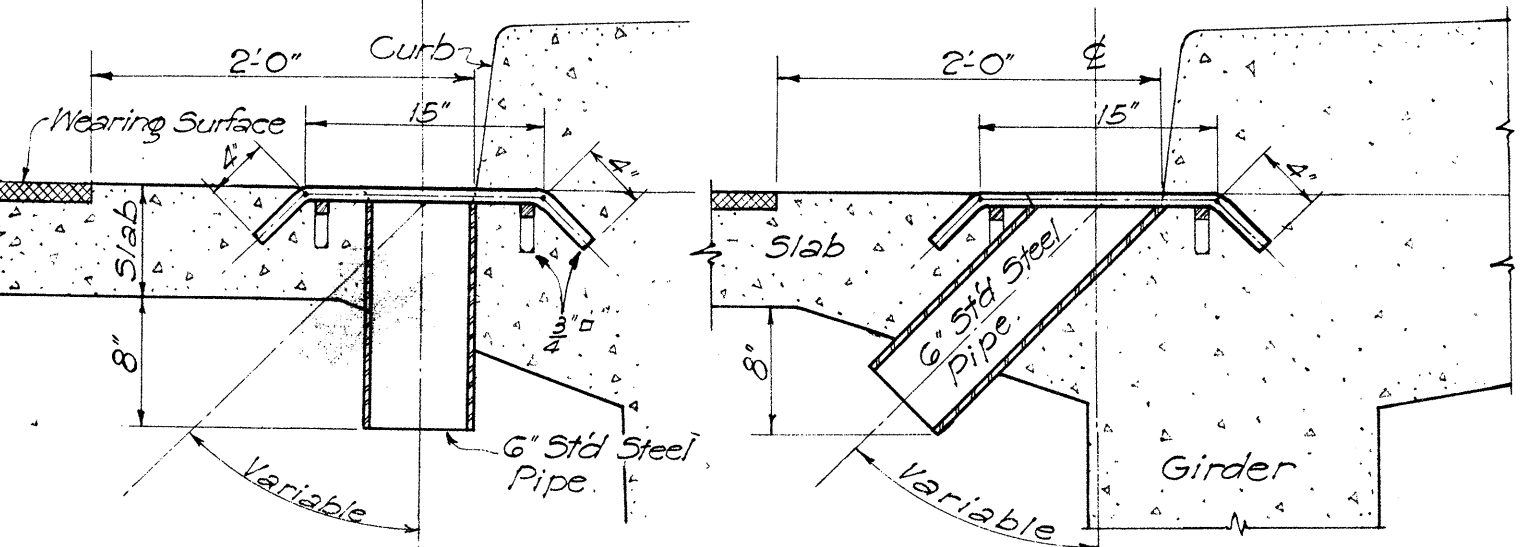
**ST'D. REFLECTOR POST**  
 Scale: 3/8" = 1'-0"

NOTE! Plates to be of Phosphor Bronze conforming to A.S.T.M., B22, Class C. Contact areas to have medium planed finish with finishing strokes parallel to longitudinal direction of bridge.



**REINFORCING BAR SPLICE**  
 Scale: Full Size

NOTE! Assembly of grillage and pipe shall be hot-dip galvanized after all welding is completed.



**SECTION "A-A" DRAINAGE DETAIL**  
 Scale: 1" = 1'-0"

**SECTION "B-B"**

**GENERAL NOTES**

CONCRETE: Class of concrete to be used in different parts of the structure are as noted on the plans.

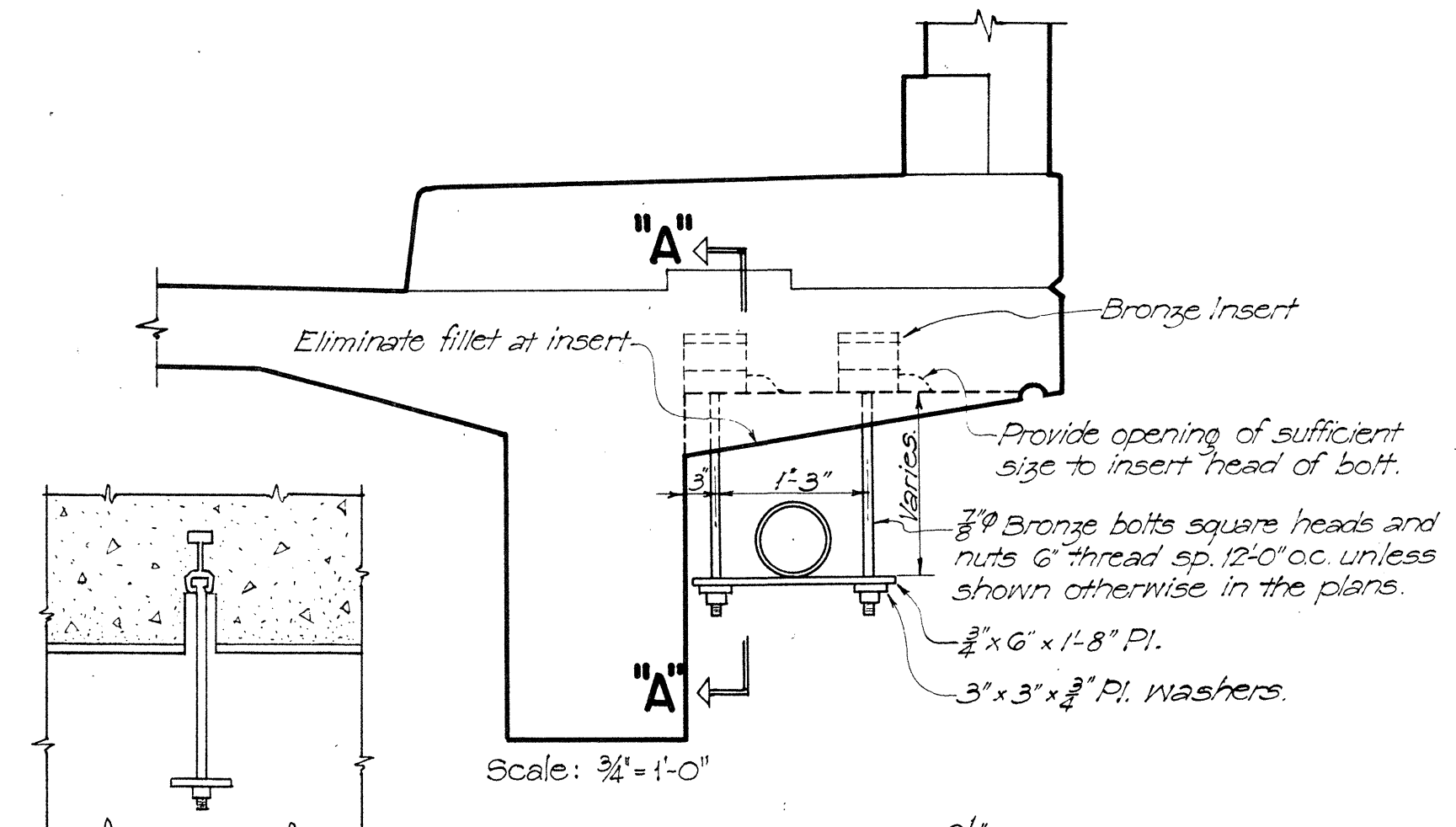
REINFORCING STEEL: Intermediate grade. All steel to be round or square deformed bars of approved design. All dimensions relating to reinforcing are to centers of bars unless otherwise noted.

Splicing of reinforcing other than main deck slab, girder and frame bars shall be done by lapping 40 diameters. Splices are to be staggered. Splices in main girder and frame bars are permitted only in bars exceeding 60'-0" in length at points to be indicated by the Engineer. These splices to be electrically arc welded according to detail and specifications. No allowance will be made in the quantities for extra weight of steel required for splices not shown on the plans.

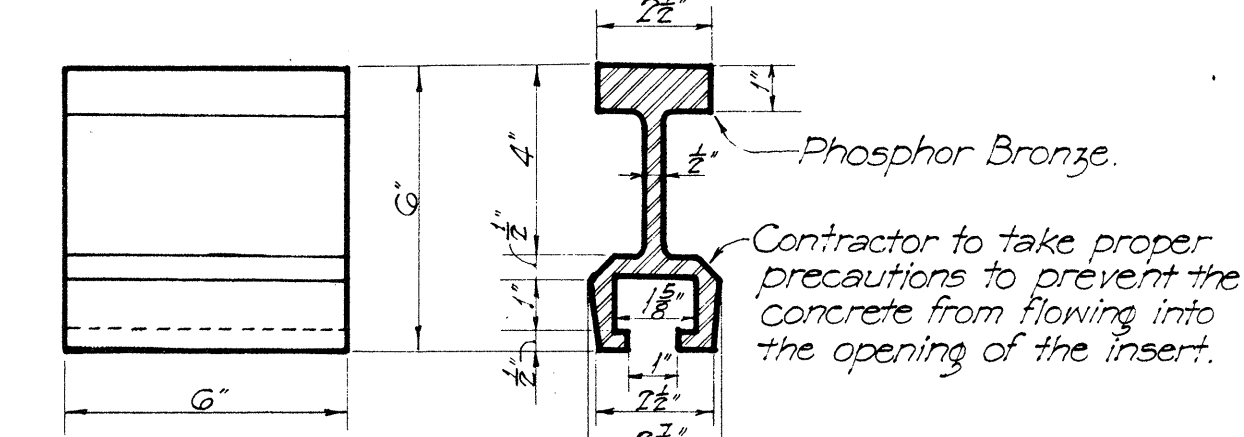
Minimum spacing between parallel bars shall be 2 1/2 times the diameter of round or 3 times the side dimension of square bars, but in no case shall the clear distance between the bars be less than 1 1/2 times the maximum size of the coarse aggregate. Minimum covering, measured from the surface of the concrete to the face of any reinforcing bar, shall be not less than 2 inches except in slabs where the minimum covering shall be 1 inch. In the footings of abutments and retaining walls and in piers the minimum covering shall be 3 inches. In work exposed to the action of sea water the minimum covering shall be 4 inches except in precast concrete piles where a minimum of 3" may be used.

WATERPROOFING: Apply waterproofing as specified in Section 34, Pamphlet "N" of the Specification, and as shown in the plans. Waterproofing is incidental to the concrete and will not be paid for separately.

CONSTRUCTION JOINTS: All construction joints to have surface roughened and 1:2 cement grout applied immediately before the second pour. Construction joints to be located at places indicated in the plans.



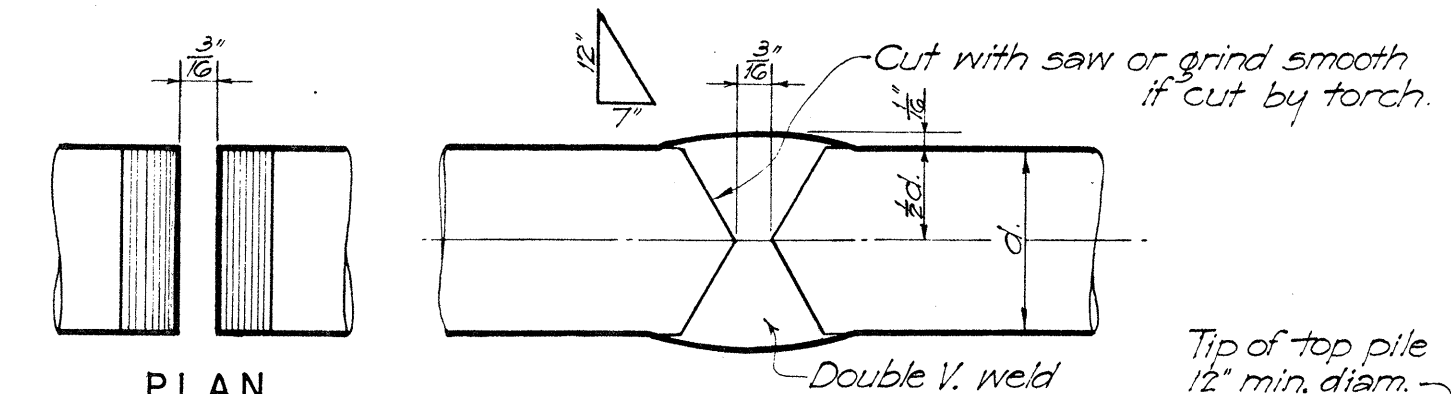
**SECTION "A-A"**  
 Scale: 3/4" = 1'-0"



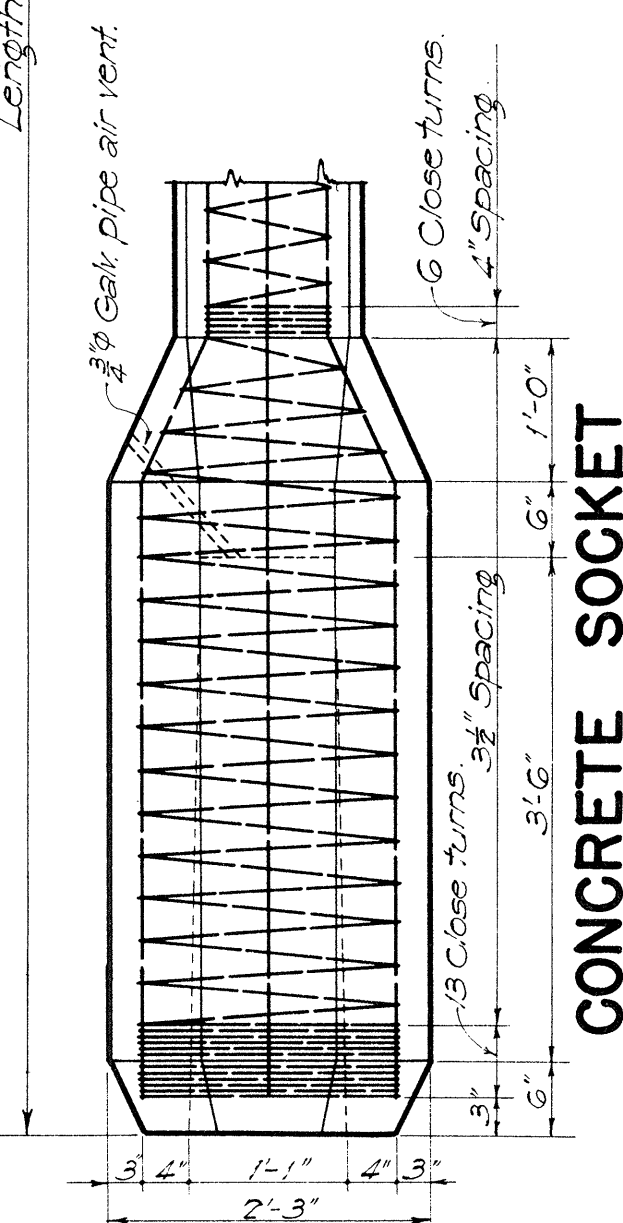
**INSERTS**  
 Scale: 3/4" = 1'-0"

**DETAIL OF PIPE HANGERS AND INSERTS**

NOTE! Inserts, bolts, plates, nuts & washers to be Phosphor Bronze conforming to the A.S.T.M. Standards, Serial Designation B22 or the latest revision thereof, and shall be Class D grade.



**TIMBER PILE SPLICE**  
 Scale: 3/4" = 1'-0"

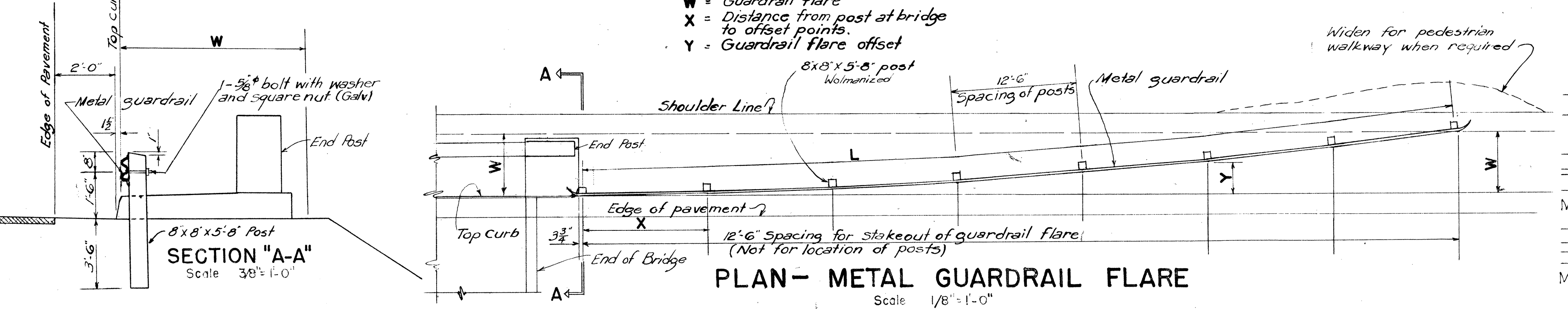


**CONCRETE SOCKET**  
 Scale: 3/4" = 1'-0"

**GUARDRAIL OFFSET**

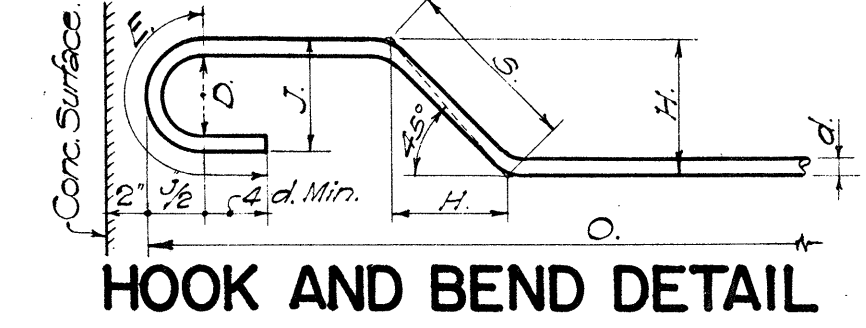
X	Y					
	W=3'	W=4'	W=5'	W=6'	W=7'	W=8'
12.5	0.19	0.16	0.14	0.12	0.09	0.08
25.0	0.75	0.64	0.55	0.49	0.36	0.32
37.5	1.69	1.44	1.25	1.10	0.78	0.72
50.0	3.00	2.56	2.22	1.96	1.38	1.28
62.5		4.00	3.47	3.06	2.16	2.00
75.0			5.00	4.41	3.11	2.88
87.5				6.00	4.23	3.92
100.0					5.53	5.12
112.5					7.00	6.48
125.0						8.00

W = Guardrail flare  
 X = Distance from post at bridge to offset points.  
 Y = Guardrail flare offset



**PLAN - METAL GUARDRAIL FLARE**  
 Scale: 1/8" = 1'-0"

MARK	SIZE	D	J	1/2	E
300	3/8"	2"	2 1/2"	1 3/8"	6"
400	1/2"	2 1/2"	3 1/2"	1 3/4"	8"
500	5/8"	3 1/2"	4 3/4"	2 3/8"	10"
600	3/4"	4 1/2"	5 3/4"	3 1/8"	12"
700	7/8"	5 1/2"	6 3/4"	4 1/8"	14"
800	1"	6 1/2"	7 3/4"	4 3/8"	16"
800	1 1/8"	7"	8 1/4"	4 3/8"	18"
900	1 1/4"	8"	9 1/4"	5 1/8"	21"
1000	1 1/2"	9"	10 1/4"	5 3/8"	23"



**HOOK AND BEND DETAIL**

TERRITORIAL HIGHWAY DEPARTMENT  
 TERRITORY OF HAWAII

**STANDARD BRIDGE DETAILS**  
 Scales as Noted

APPROVED BY: TERRITORIAL HIGHWAY ENGINEER

SHEET No. 1 OF 1 SHEETS

**DETAIL OF 16" x 16" CONCRETE PILE**  
 Scale: 3/4" = 1'-0"  
 NOTE! For 14" x 14" Concrete Piles use same reinforcing, # of bars & wrapping.

DESIGNED BY: A. R. BATES  
 DRAWN BY: G. KAMAHARU  
 QUANTITIES BY: H. H. HARRIS  
 CHECKED BY: H. H. HARRIS