

MATERIAL QUANTITIES

DESIGNATION	QUANTITY	MATERIAL
Rock fill	6.66 CuYd	Selected rock
Spillway	26.66 " "	C.R.M. Apron
Riprap	7.00 " "	Hand laid R.R.
Excavation	6.33 " "	Unclassified
Reinforc.	5163 lbs	Steel
Top slab	9.77 CuYd	Class "A" Conc.
Bottom slab	9.36 " "	" " "
Sides & fillets	13.29 " "	" " "
Curb (Coping)	0.70 " "	" " "
Apron	7.06 " "	" " "
Wing Walls	5.97 " "	" " "
Total	46.15 " "	" " "

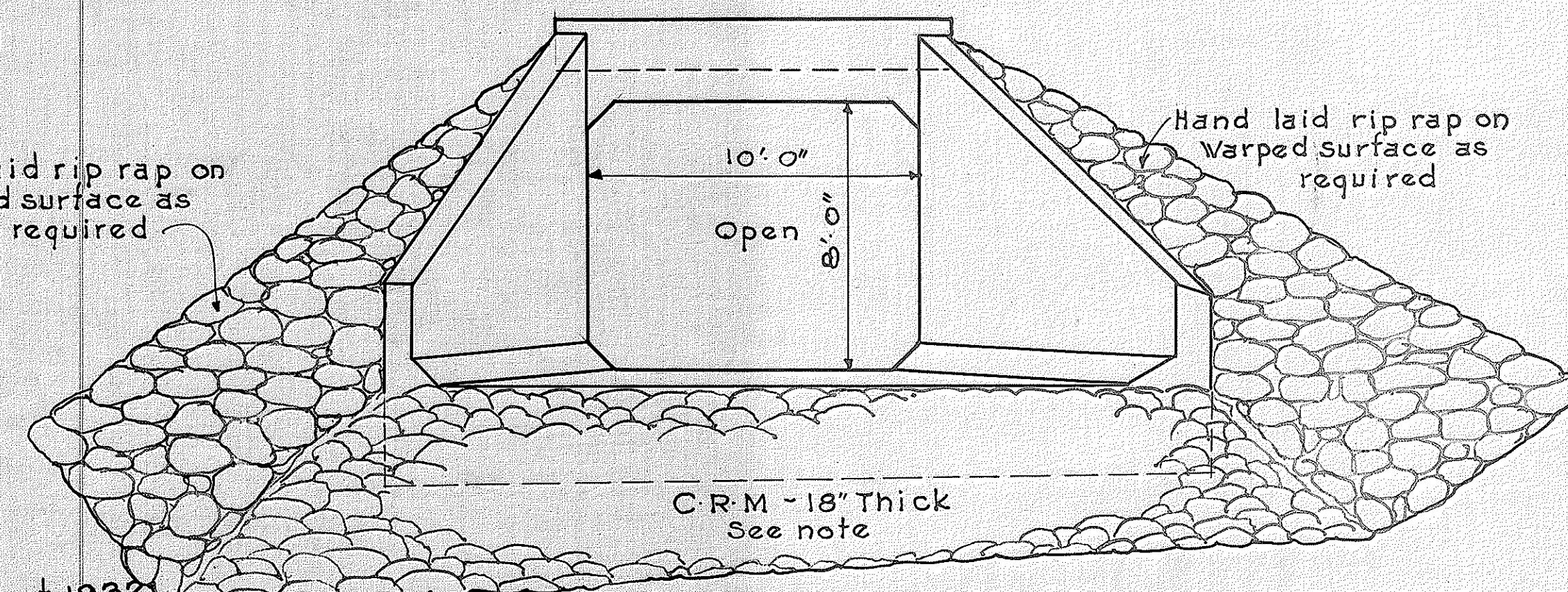
STEEL SCHEDULE

MK	SIZE	N°	DESCRIPTION	LOCATION	LQTH	TOTAL LQTH	WT. PER FT.	TOTAL WT.
601	3/4"	22		Top Slab	16'-9 3/4"	369.9	1.52	563 #
602	"	44		Top & bottom slab	15'-2"	667.4	"	1015 #
603	"	21		Bottom slab	16'-4"	343.0	"	522 #
500	5/8"	88		Trunk Walls	13'-2"	1158.6	1.06	1229 #
501	"	10	Variable	Apron slab		185.0	"	197 #
502	"	10	Variable	" "		91.0	"	97 #
503	"	12	Variable	Wing Walls		106.0	"	113 #
504	"	33	Variable	" "		346.5	"	368 #
505	"	2		Curb	12'-0"	24.0	"	26 #
506	"	9	Variable	Footings		112.5	"	120 #
400	1/2"	26	Variable	Spacers		650.0	.86	559 #
401	"	94		Fillet	2'-9"	259.5	"	223 #
402	"	8		Curb Spacers	4'-1"	38.6	"	34 #
403	"	18	Variable	Footings		67.5	"	59 #
404	"	22		Dowels	2'-0"	44.0	"	38 #
					Total	5163 #		

Total 5163#

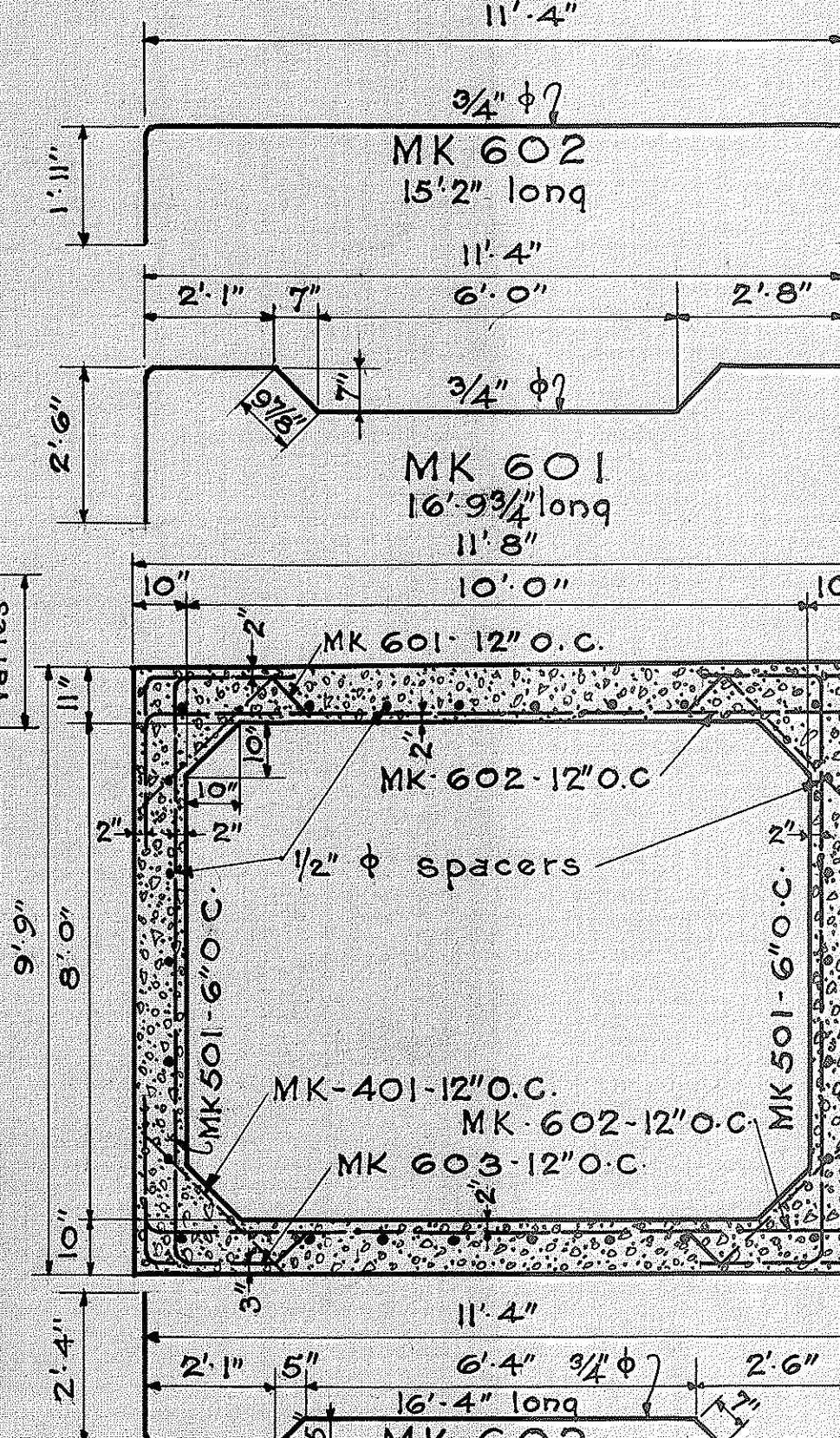
**EXTENSION OF 10x8 CULVERT
AT STA. 683+02
KOHALA MT ROAD
F.A.P. 11-A**

4267.15A



**DOWN STREAM ELEVATION
PERPENDICULAR TO C OF CULVERT**

Scale - 1/4" = 1'-0"
11'-4"



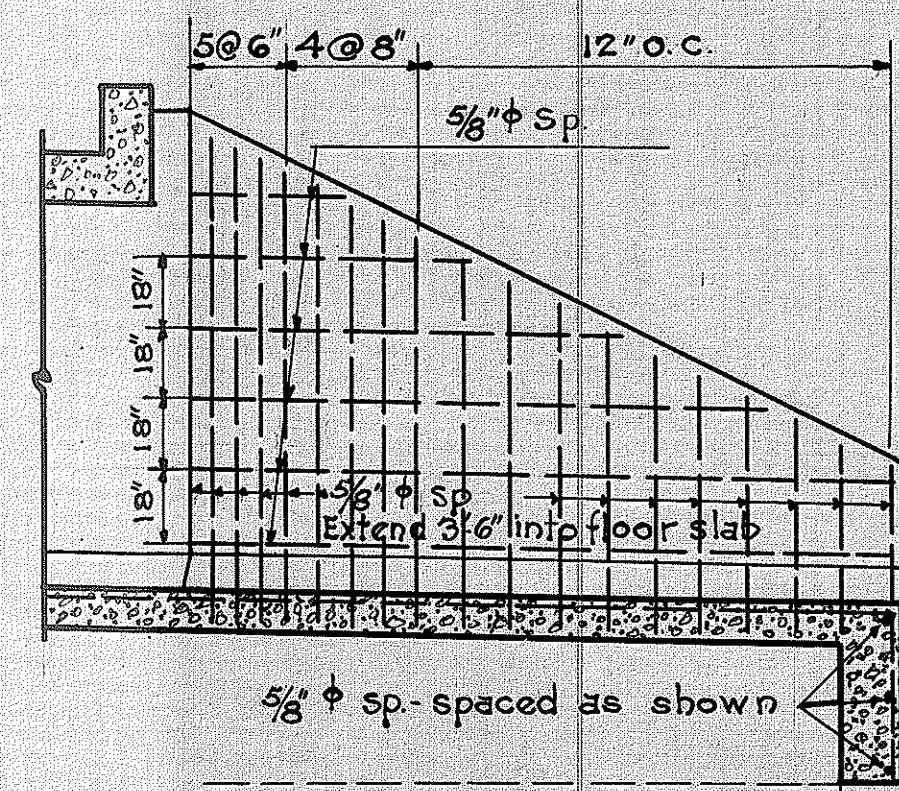
SECTION AT A-A

Scale 3/8" = 1'-0"

Note for Apron!
An apron with surface at the indicated slope shall be constructed from the edge of the conc. floor to an intersection with the rock stream bed. This apron shall be built by backfilling with selected rock to within 18" of its finished surface & then constructing a surface of C.R.M. 18" thick.

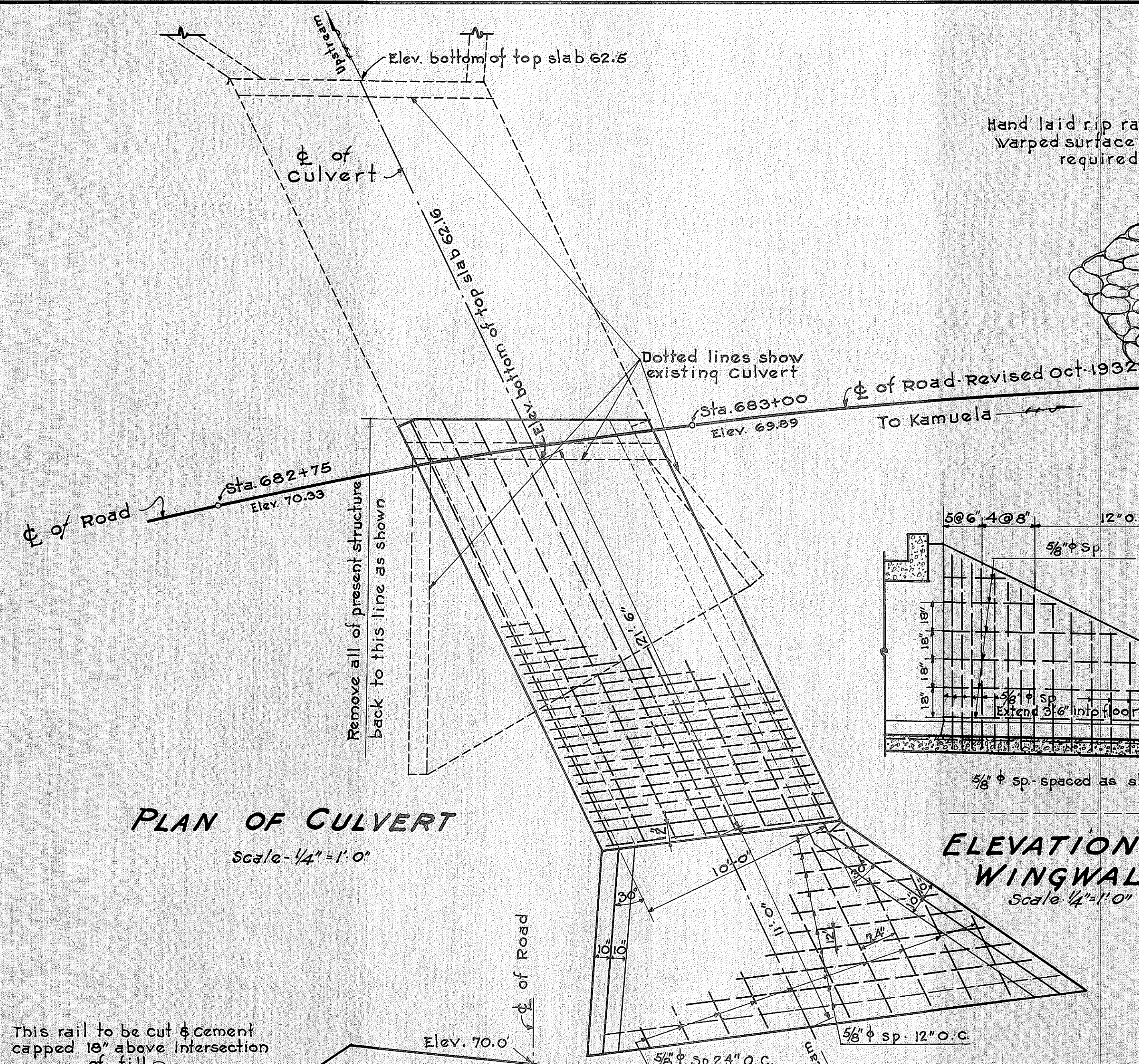
**ELEVATION OF
WINGWALL**

Scale 1/4" = 1'-0"



PLAN OF CULVERT

Scale - 1/4" = 1'-0"



LONG. SECTION

Scale - 1/4" = 1'-0"

