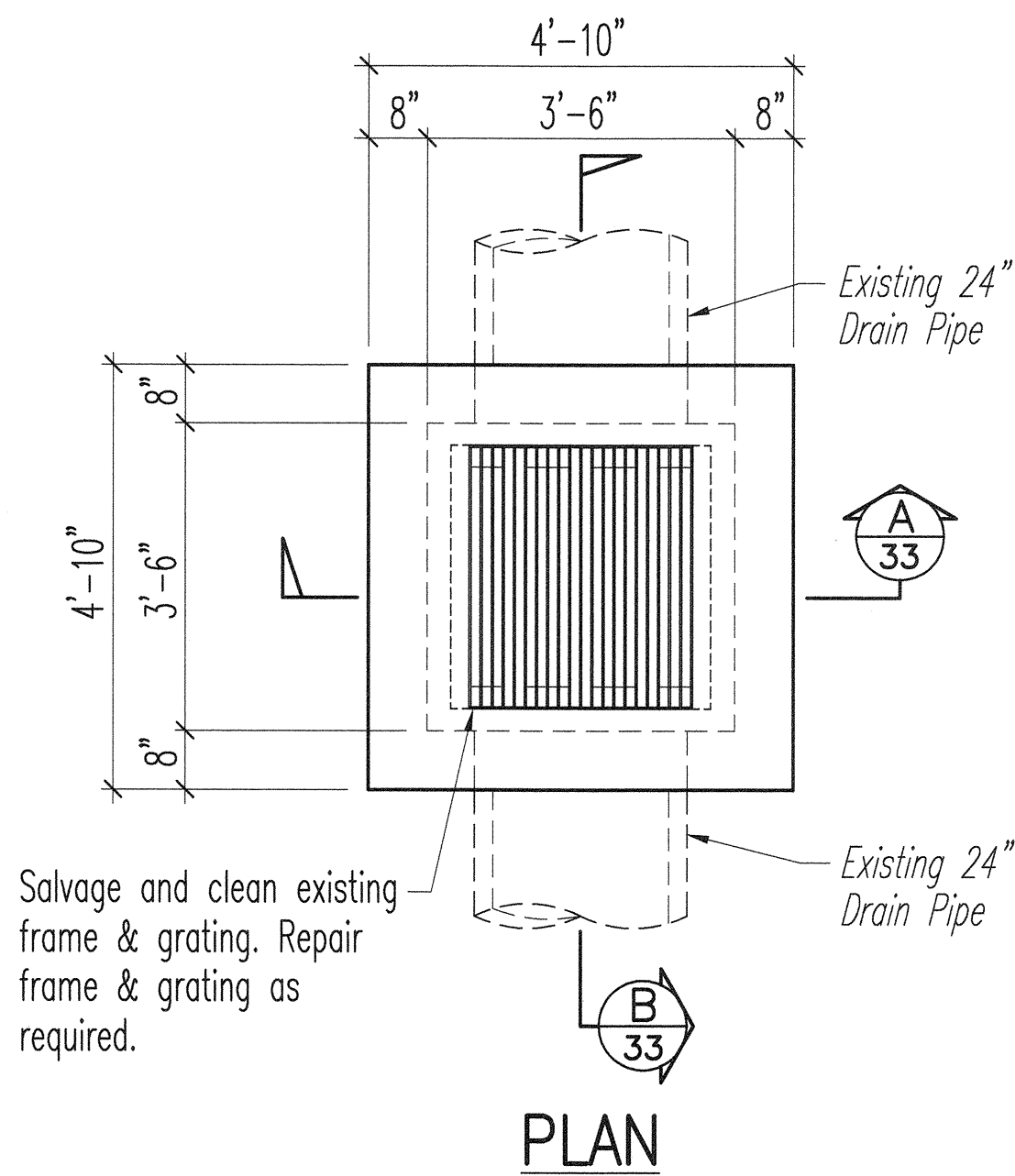
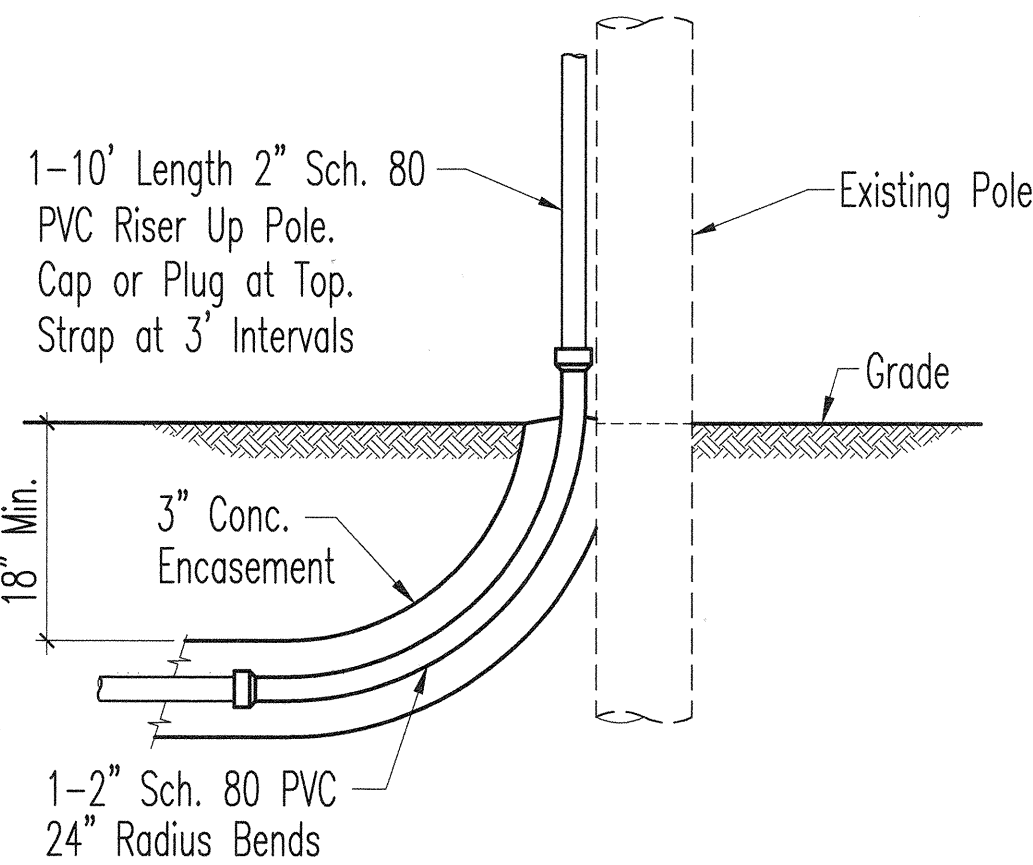
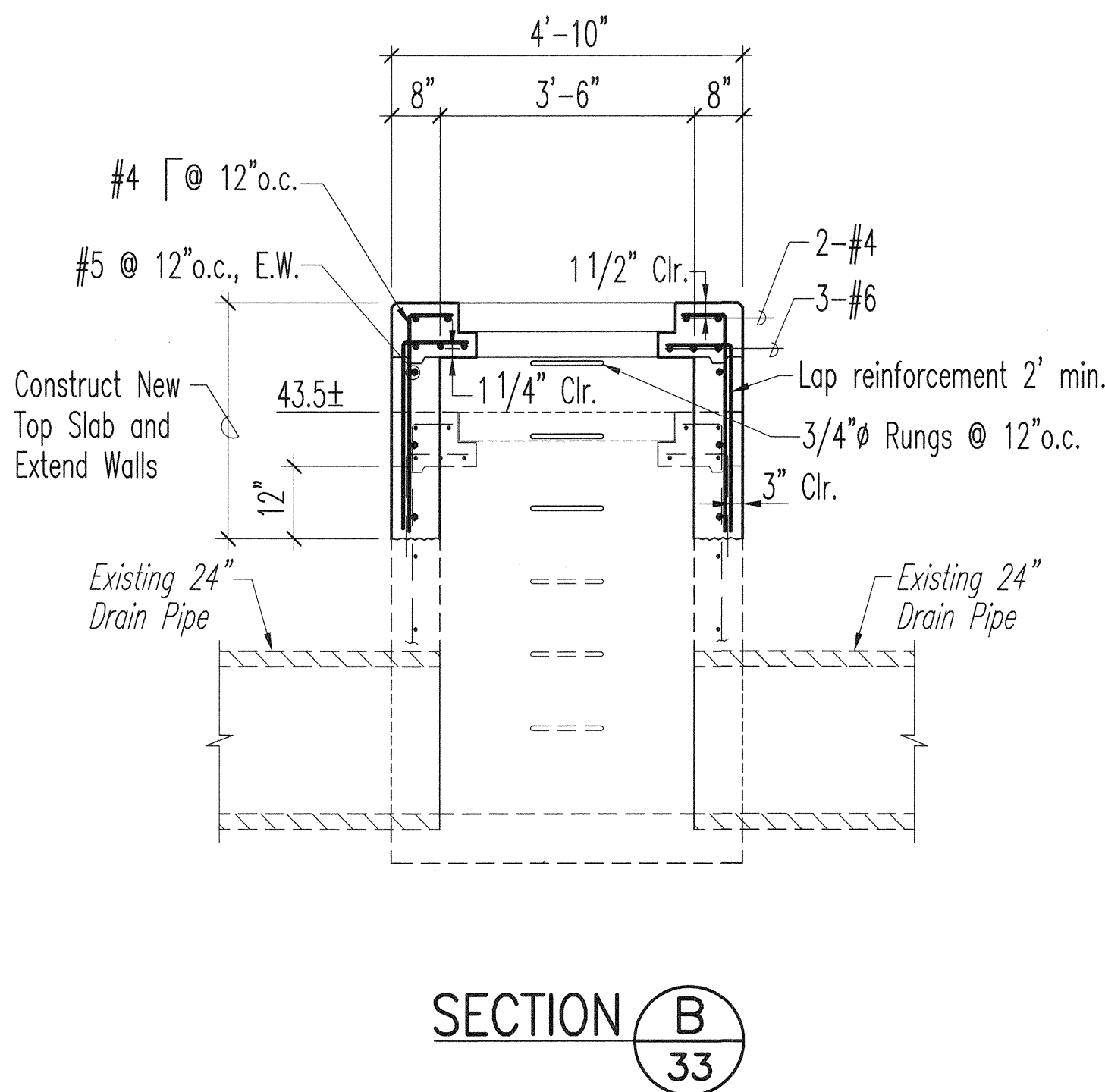
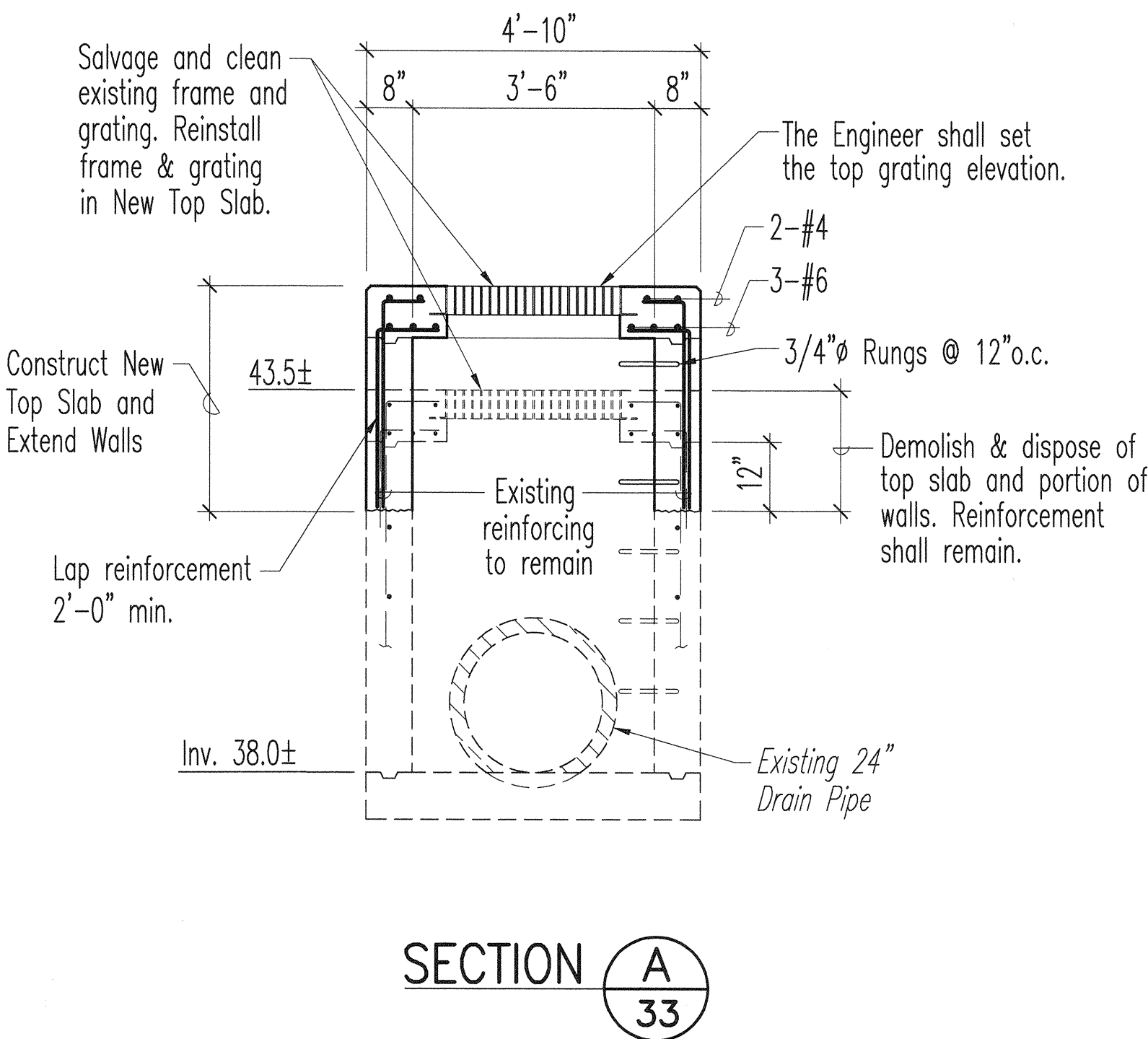


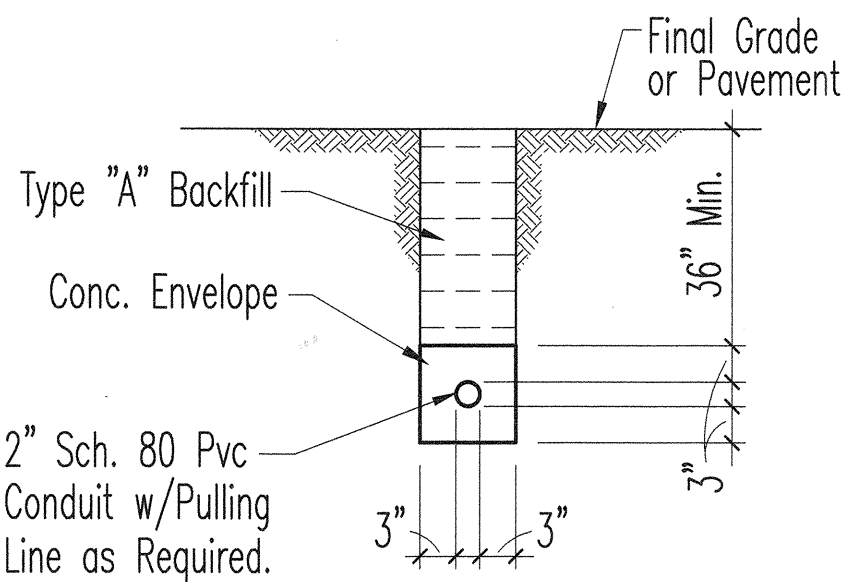
FED. ROAD DIST. NO.	STATE	FED. AID PROJ. NO.	FISCAL YEAR	SHEET NO.	TOTAL SHEETS
HAWAII	HAW.	STP-011-2(32)	1999	33	34



RECONSTRUCT DROP INLET 1
Scale: 1/2" = 1'-0"



Not to Scale

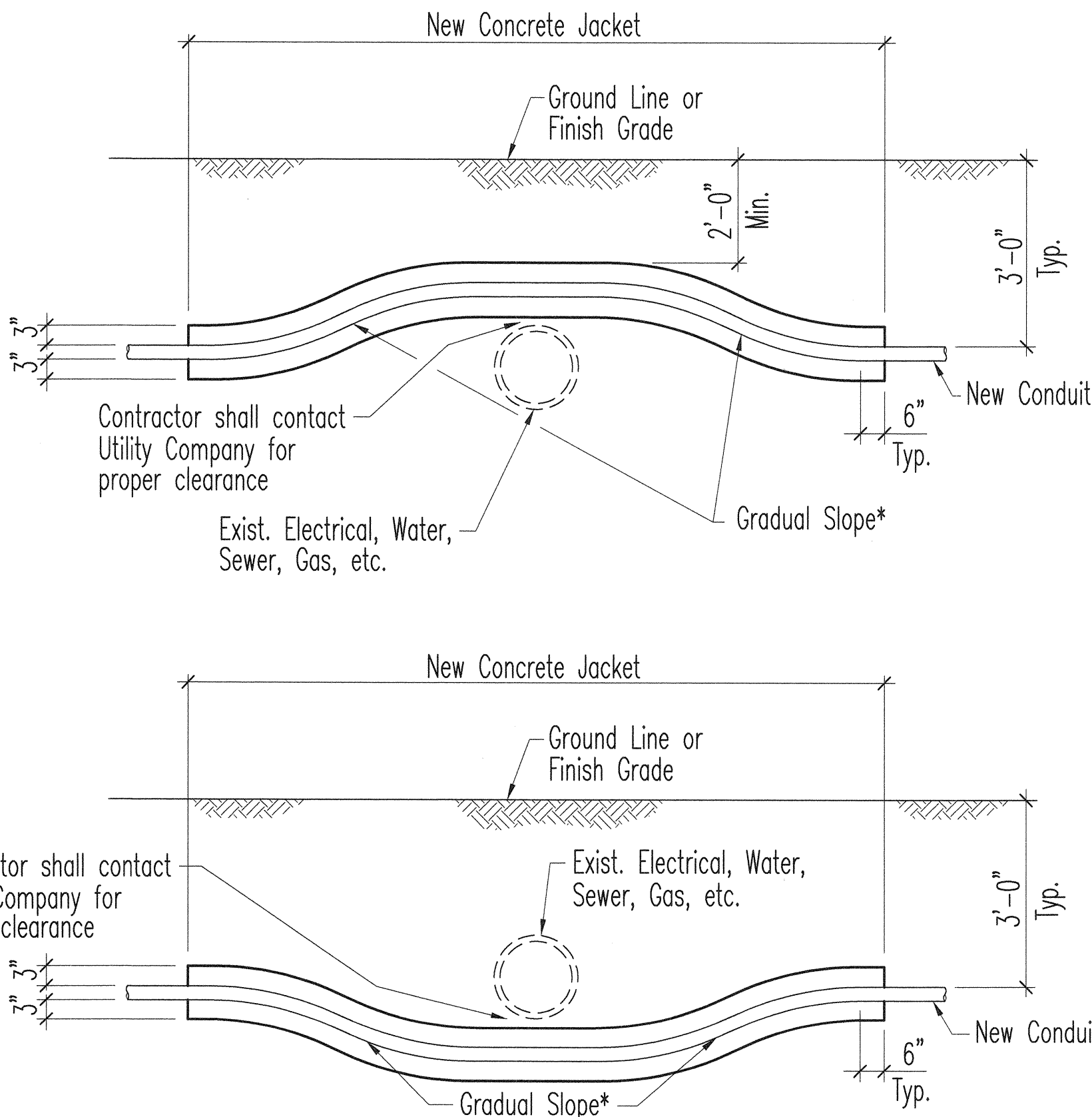


Notes:

- Concrete Notes:
 - Concrete strength 2,500 p.s.i. in 28 days.
 - Maximum aggregate for Duct Line concrete - 3/4".
- Backfill:

Type "A" - Beach sand, earth or earth & gravel. If earth & gravel, the minimum rock size shall be 1" and the mixture shall contain not more than 50% by volume of rock particles.

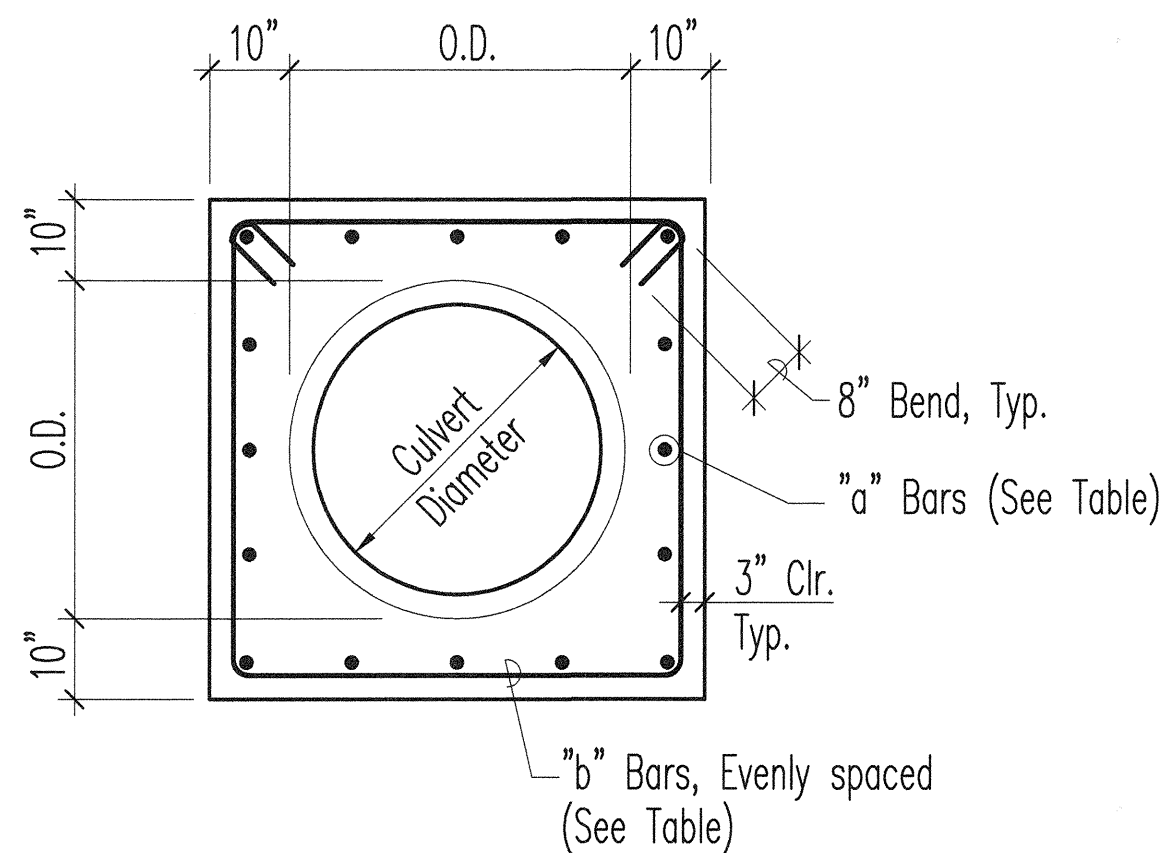
ELEC. SERVICE DUCT LINE DETAIL 3
Not to Scale



Note:

* To be determined by County Electrical Inspector/Engineer.

Not to Scale

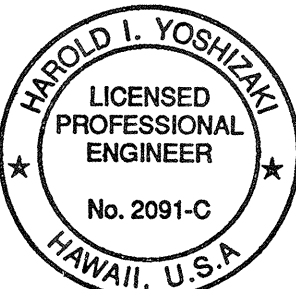
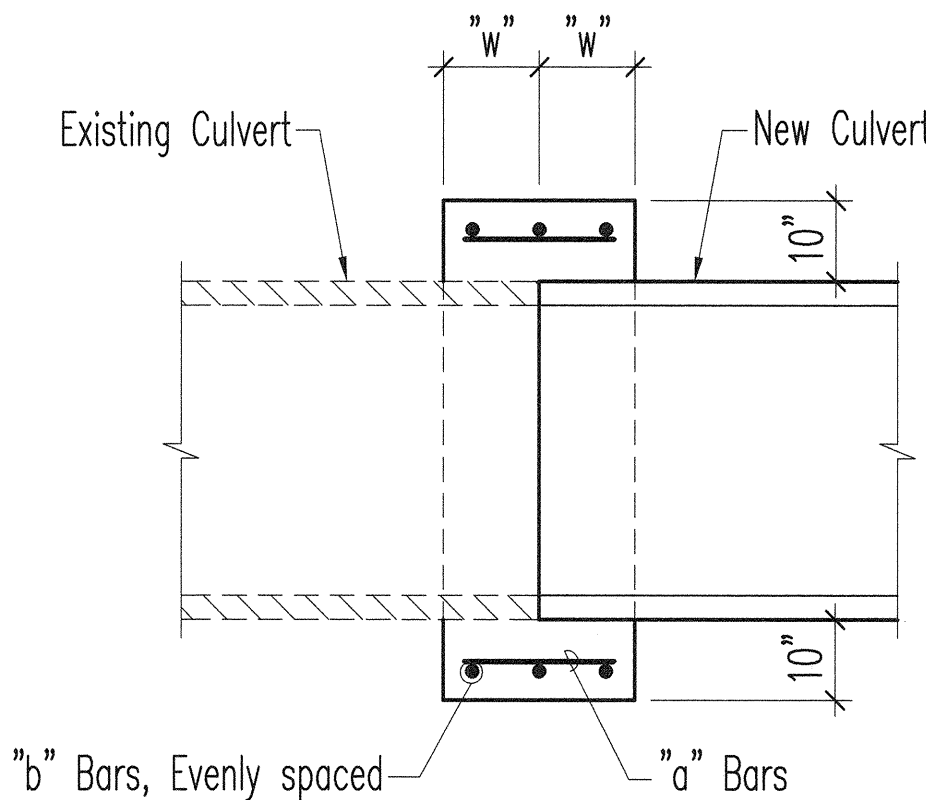


Notes:

- Reinforcing steel for Concrete Collar shall conform to the requirements of ASTM 615, Grade 60.
- Concrete shall be Class A.

TYPICAL DETAILS OF REINFORCED CONCRETE COLLAR 5
Scale: 1/2" = 1'-0"

Culvert Diameter	"a" Bars	"b" Bars	"w"
18" to 30"	#4 @ 9"	3-#4	12"
36" to 48"	#5 @ 9"	4-#4	15"



THIS WORK WAS PREPARED BY ME OR UNDER MY SUPERVISION.
Harold L. Yoshizaki
SHIMABUKURO, ENDO & YOSHIZAKI, INC.
1126 12th Avenue
Honolulu, Hawaii 96816

STATE OF HAWAII
DEPARTMENT OF TRANSPORTATION
HIGHWAYS DIVISION

MISCELLANEOUS DETAILS

KANOELEHUA AVENUE
TRAFFIC SIGNAL MODERNIZATION
F.A. PROJ. NO. STP-011-2(32)

SCALE: AS SHOWN DATE: OCT. 1998

SHEET No. 1 OF 1 SHEETS