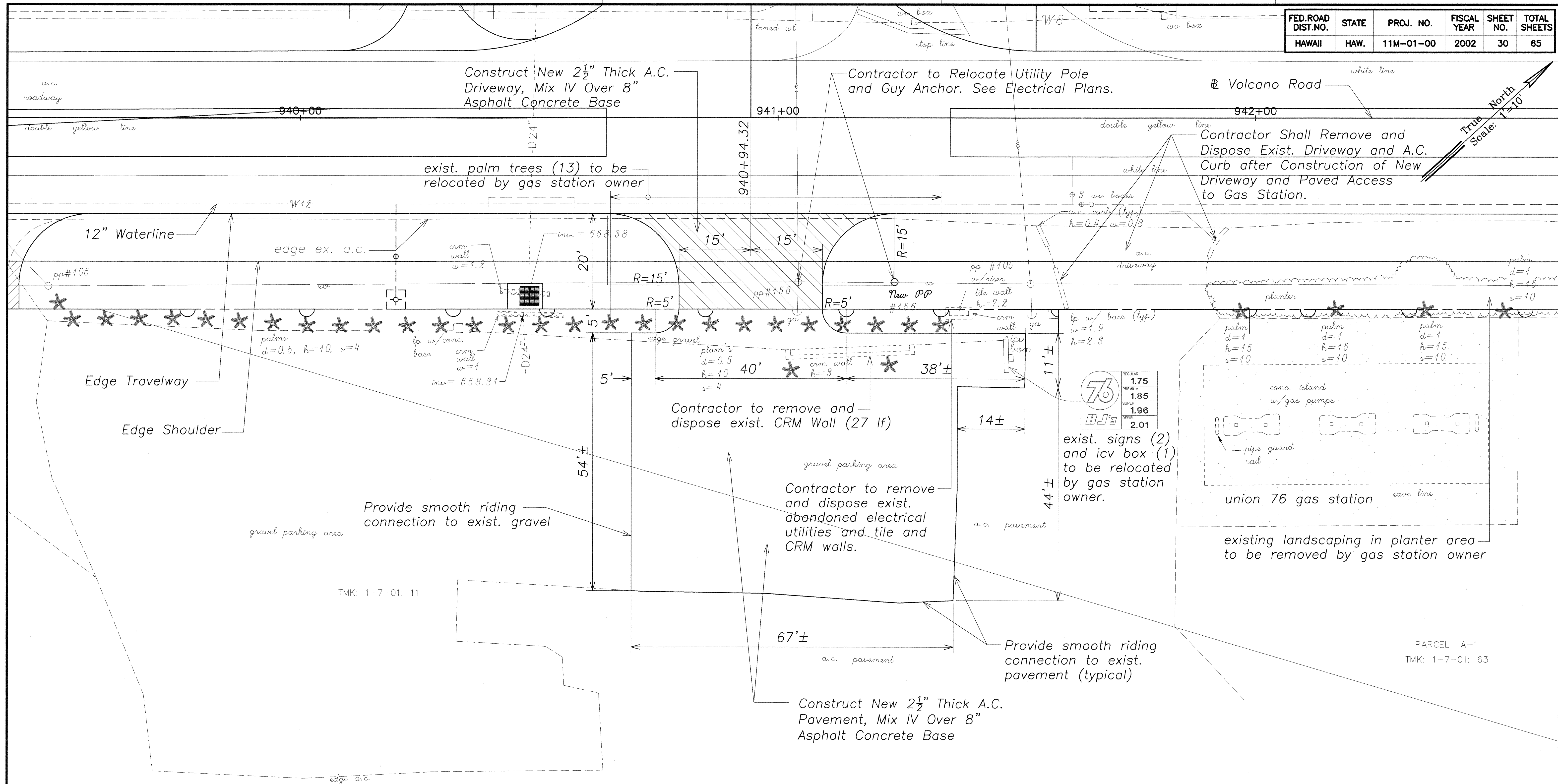


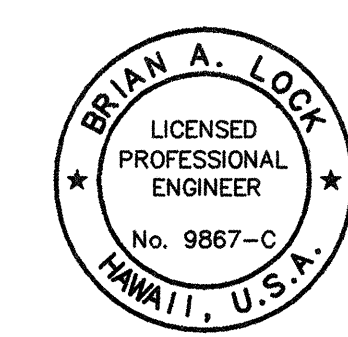
FED. ROAD DIST. NO.	STATE	PROJ. NO.	FISCAL YEAR	SHEET NO.	TOTAL SHEETS
HAWAII	HAW.	11M-01-00	2002	30	65



ORIGINAL PLAN	SURVEY PLOTTED BY	DATE
NOTE BOOK	DRAWN BY	
hmg/pc04	DESIGNED BY	
No. 139	CHECKED BY	

Note:
Contractor shall coordinate with the gas station owner to determine a schedule to demolish, remove or relocate obstructions within the working area of the gas station property regardless of whether the obstructions are shown or are not shown on the plans.

PLAN
Scale: 1"=10'



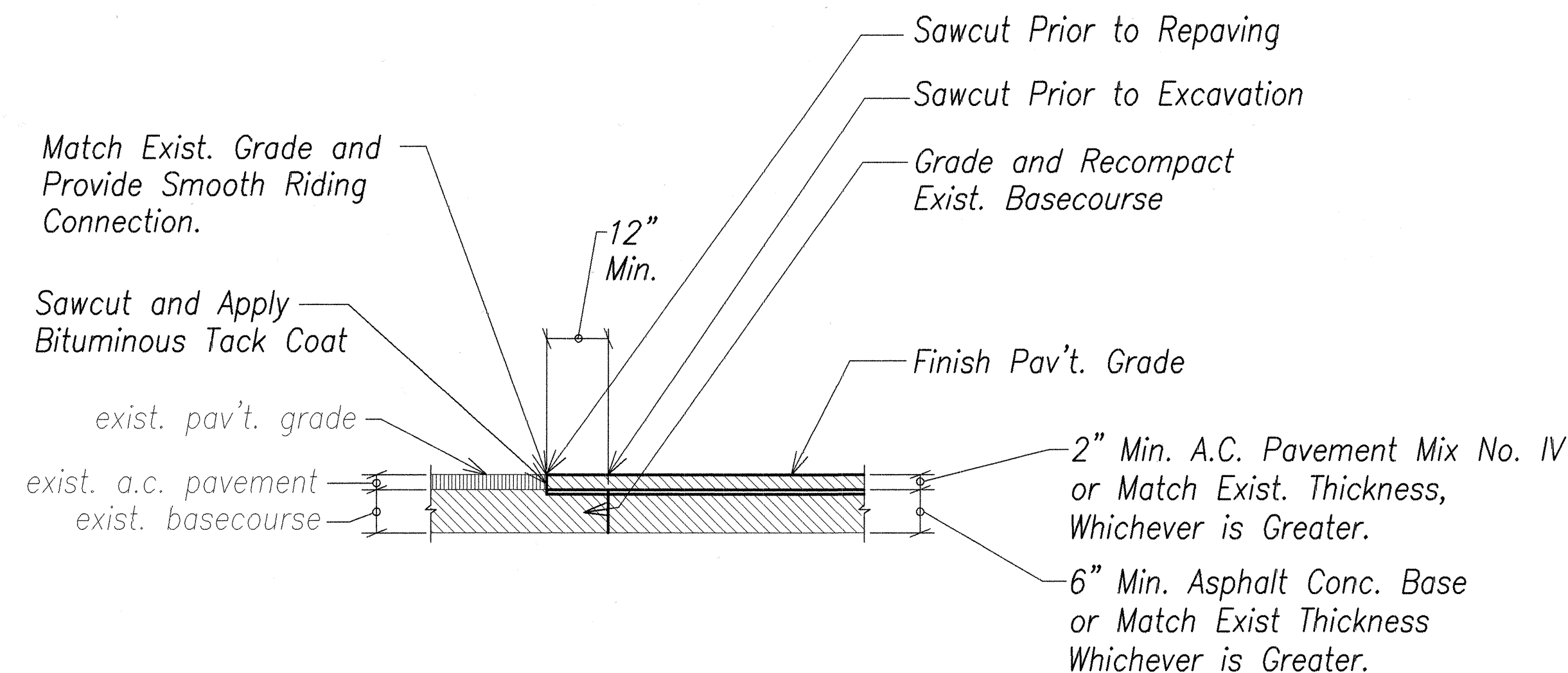
THIS WORK WAS PREPARED BY ME OR UNDER MY SUPERVISION.
[Signature]
ENGINEERS SURVEYORS HAWAII, INC.

STATE OF HAWAII
DEPARTMENT OF TRANSPORTATION
HIGHWAYS DIVISION

DRIVEWAY DETAILS

VOLCANO ROAD INTERSECTION
IMPROVEMENTS AT HUINA ROAD
~~State~~ Project No. 11M-01-00
Scale: 1" = 10' Date: November 2001
SHEET No. 1 OF 1 SHEETS

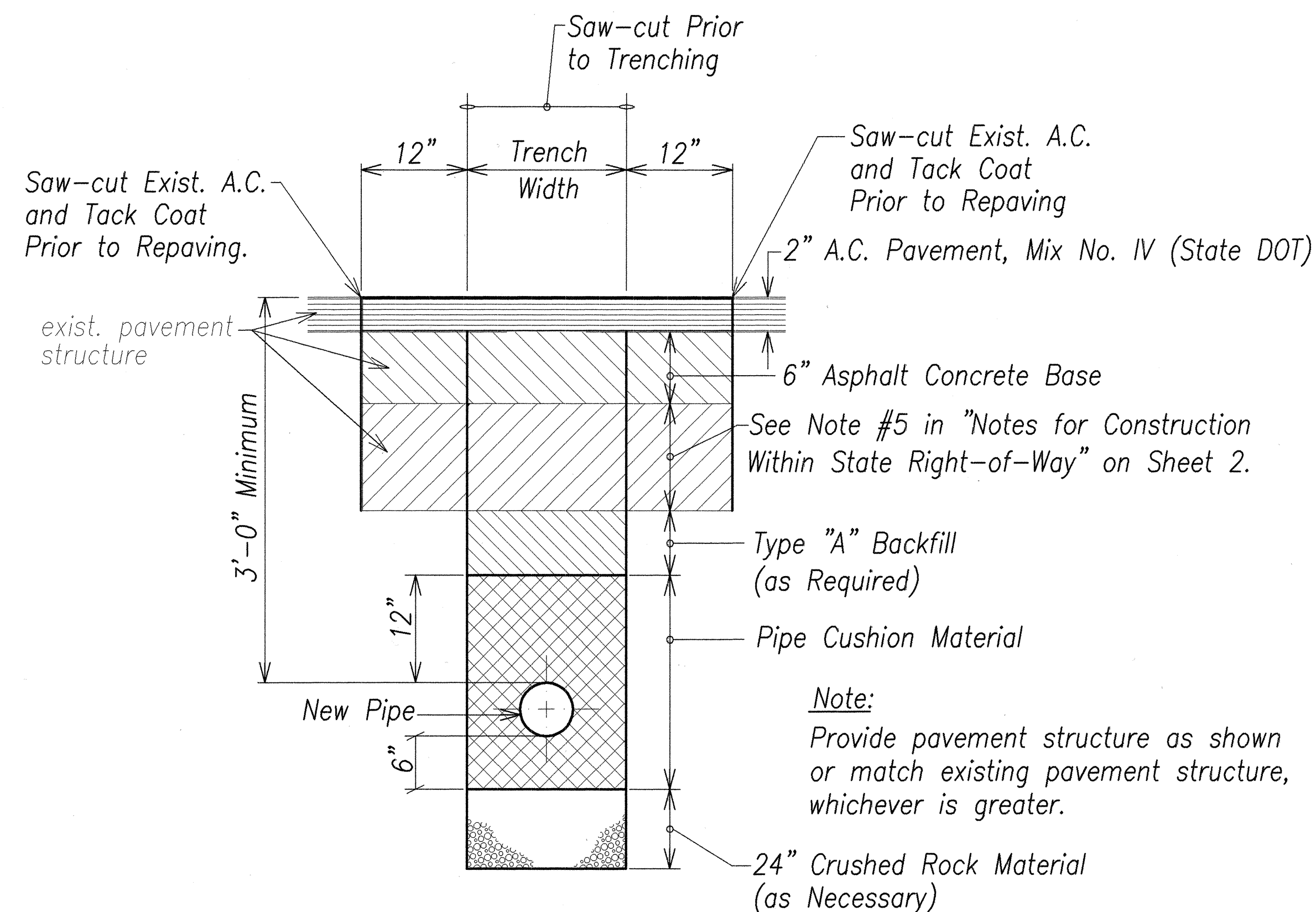
FED. ROAD DIST. NO.	STATE	PROJ. NO.	FISCAL YEAR	SHEET NO.	TOTAL SHEETS
HAWAII	HAW.	11M-01-00	2002	31	65



Note:
1. Maintain exist. roadway cross slope.

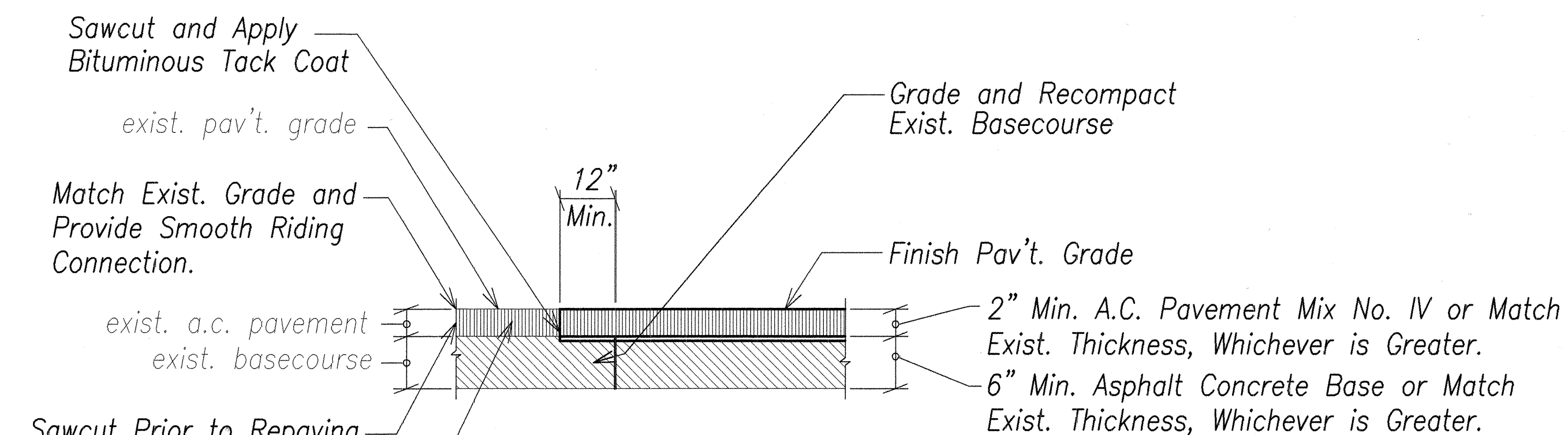
SAWCUT & CONNECTION TO EXIST. PAVEMENT (FOR CONNECTION TO A.C. PAVEMENT WITHIN COUNTY OWNED STREETS)

Not to Scale



TYPICAL TRENCH RESTORATION (FOR A.C. PAVEMENT SECTION WITHIN STATE HWY. RIGHT-OF-WAY)

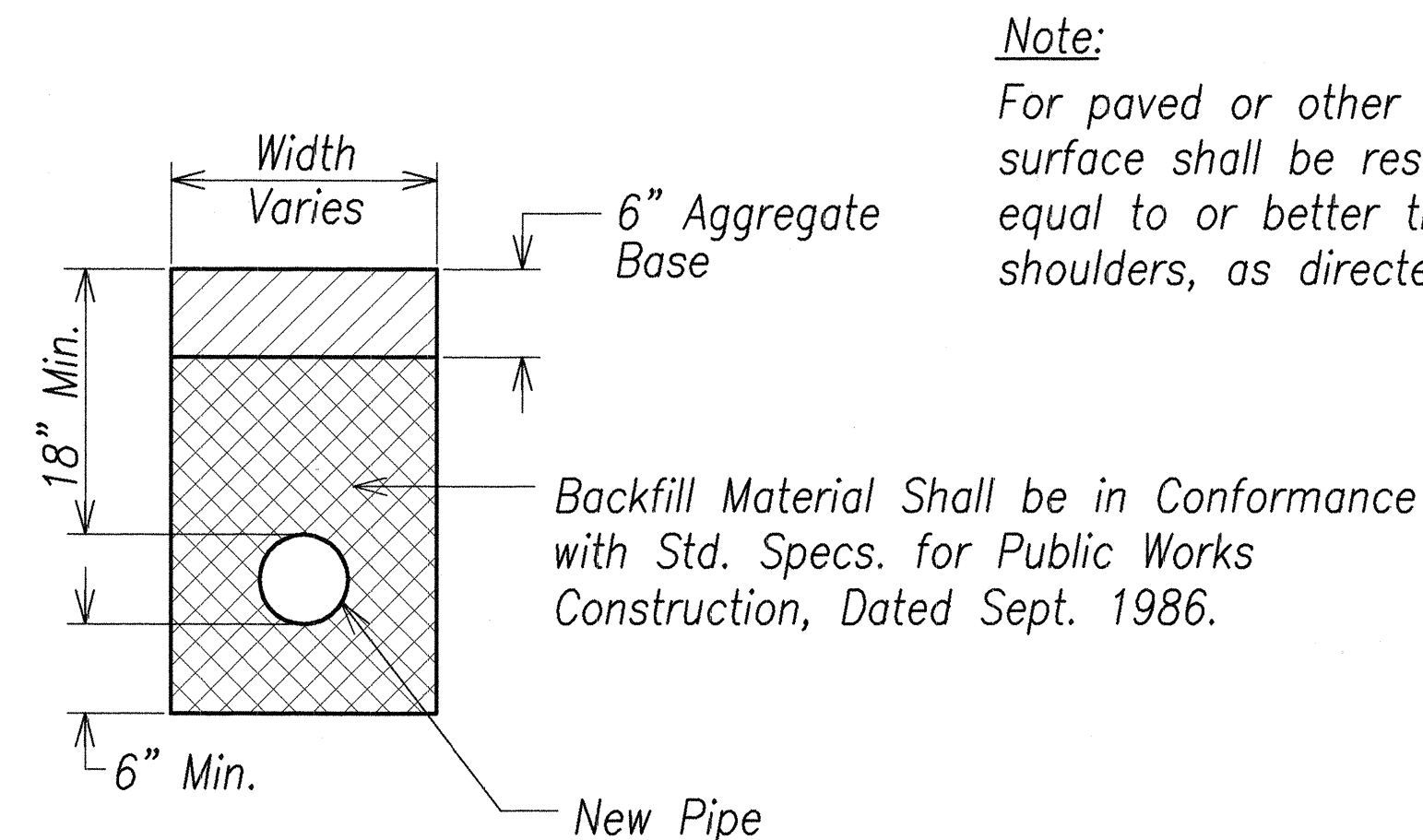
Not to Scale



Note:
1. Maintain exist. roadway cross slope.

SAWCUT & CONNECTION TO EXIST. PAVEMENT (FOR CONNECTION TO A.C. PAVEMENT WITHIN STATE HWY. RIGHT-OF-WAY)

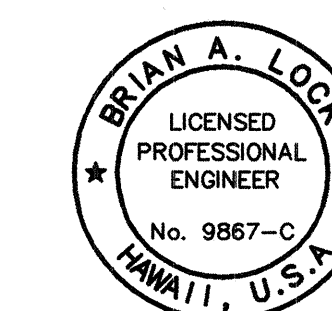
Not to Scale



TRENCH RESTORATION DETAIL (FOR SECTION BEYOND SHOULDER WITHIN COUNTY HWY. RIGHT-OF-WAY)

Not to Scale

ORIGINAL PLAN	SURVEY PLOTTED BY	DATE
NOTE BOOK	DESIGNED BY	
11M-01-00	CHECKED BY	
No. 1		



THIS WORK WAS PREPARED BY
ME OR UNDER MY SUPERVISION.
Brian A. Lock
ENGINEERS SURVEYORS HAWAII, INC.

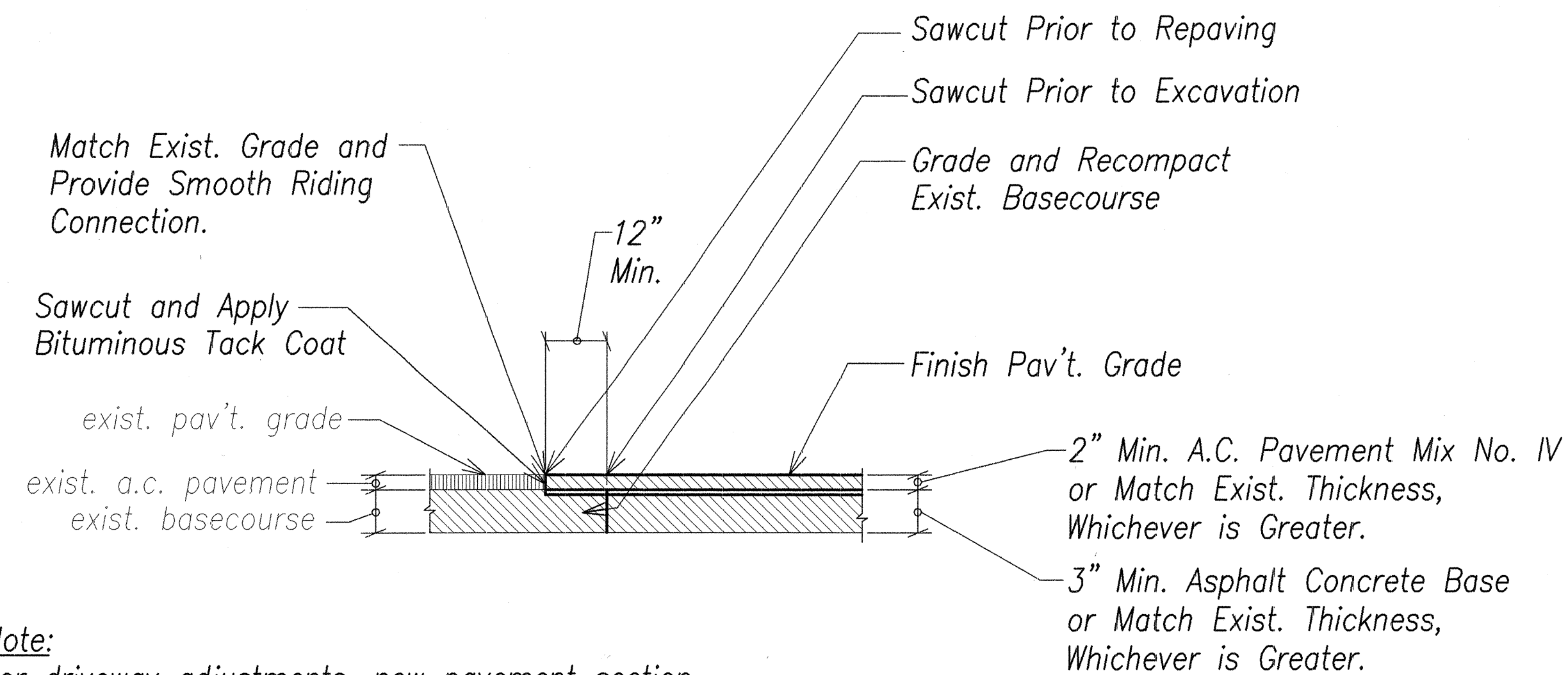
STATE OF HAWAII
DEPARTMENT OF TRANSPORTATION
HIGHWAYS DIVISION

MISCELLANEOUS DETAILS

VOLCANO ROAD INTERSECTION
IMPROVEMENTS AT HUINA ROAD
State Project No. 11M-01-00

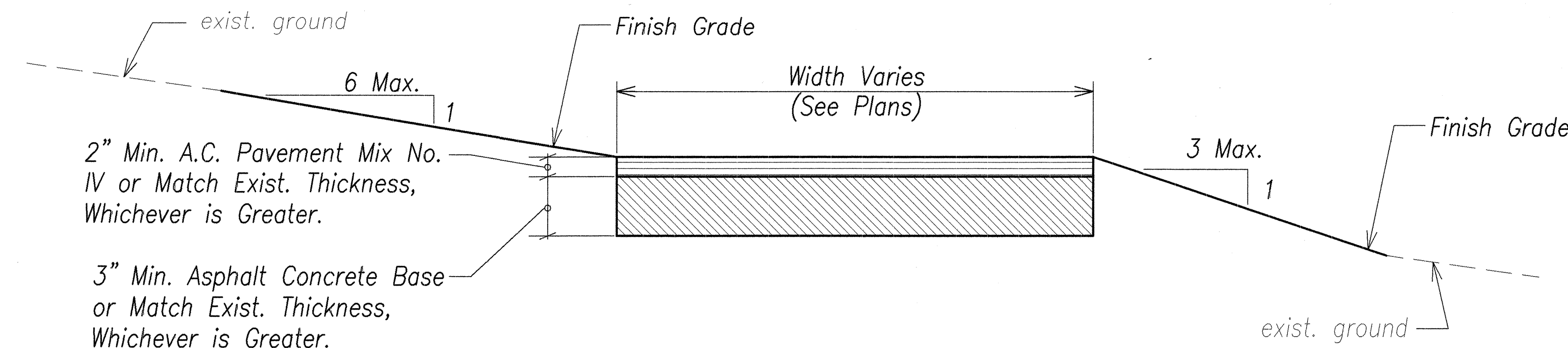
Scale: 1" = 1' Date: November 2001
SHEET No. 1 OF 3 SHEETS

FED. ROAD	STATE	PROJ. NO.	FISCAL YEAR	SHEET NO.	TOTAL SHEETS
HAWAII	HAW.	11M-01-00	2002	32	65

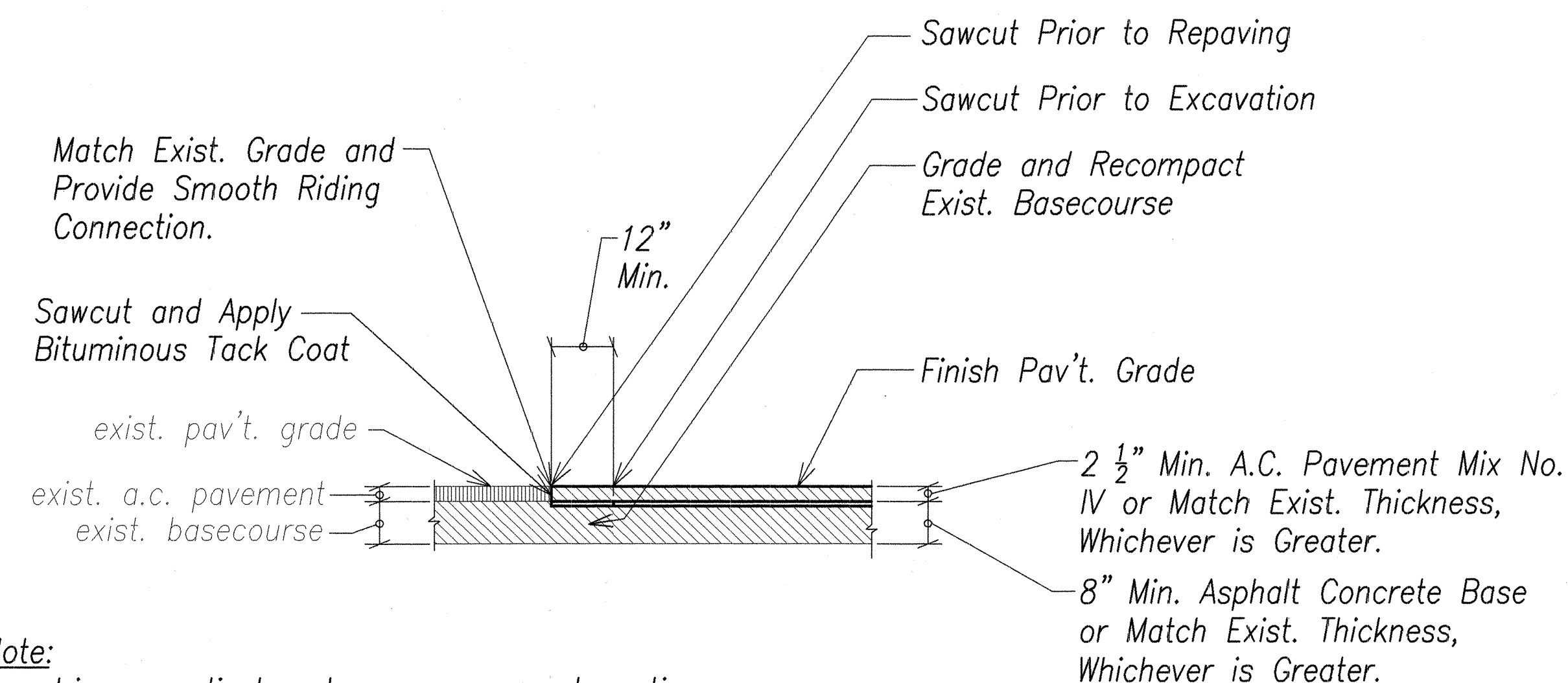


Note:
For driveway adjustments, new pavement section shall connect to the existing driveway within the State Right-of-Way and shall not encroach into private property.

SAWCUT & CONNECTION TO EXIST. PAVEMENT
(FOR CONNECTION TO A.C. PAVEMENT WITHIN PRIVATE LOTS)
Not to Scale

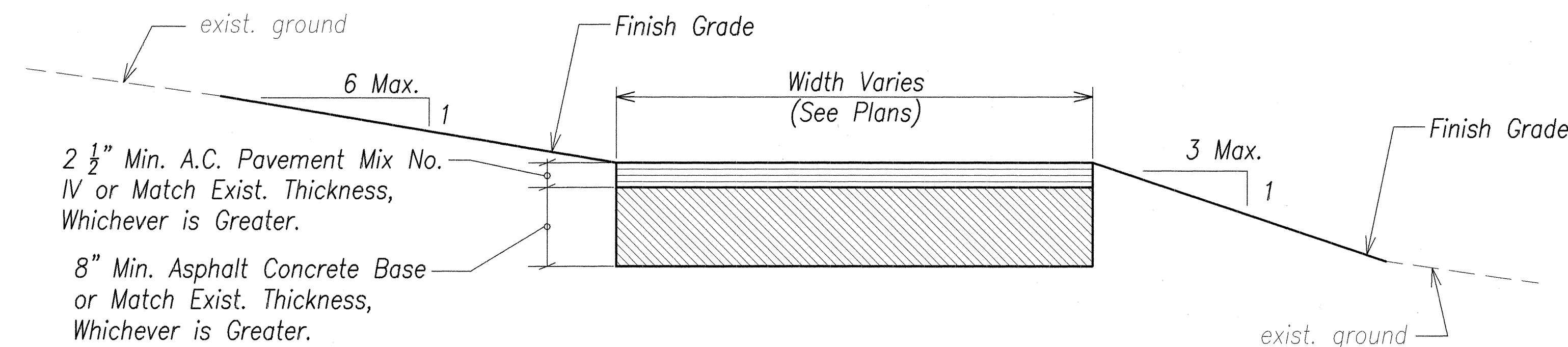


DRIVEWAY PAVEMENT SECTION
(FOR PRIVATE LOTS)
Not to Scale



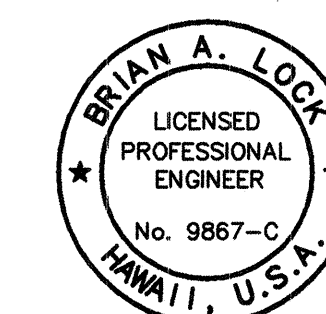
Note:
For driveway adjustments, new pavement section shall connect to the existing driveway within the State Right-of-Way and shall not encroach into private property.

SAWCUT & CONNECTION TO EXIST. PAVEMENT
(FOR CONNECTION TO A.C. PAVEMENT WITHIN COMMERCIAL LOTS)
Not to Scale



DRIVEWAY PAVEMENT SECTION
(FOR COMMERCIAL LOTS)
Not to Scale

ORIGINAL PLAN	DATE
DESIGNED BY	
CHECKED BY	
NOTED BY	
DESIGNED BY	
CHECKED BY	
NOTED BY	
DESIGNED BY	
CHECKED BY	
NOTED BY	



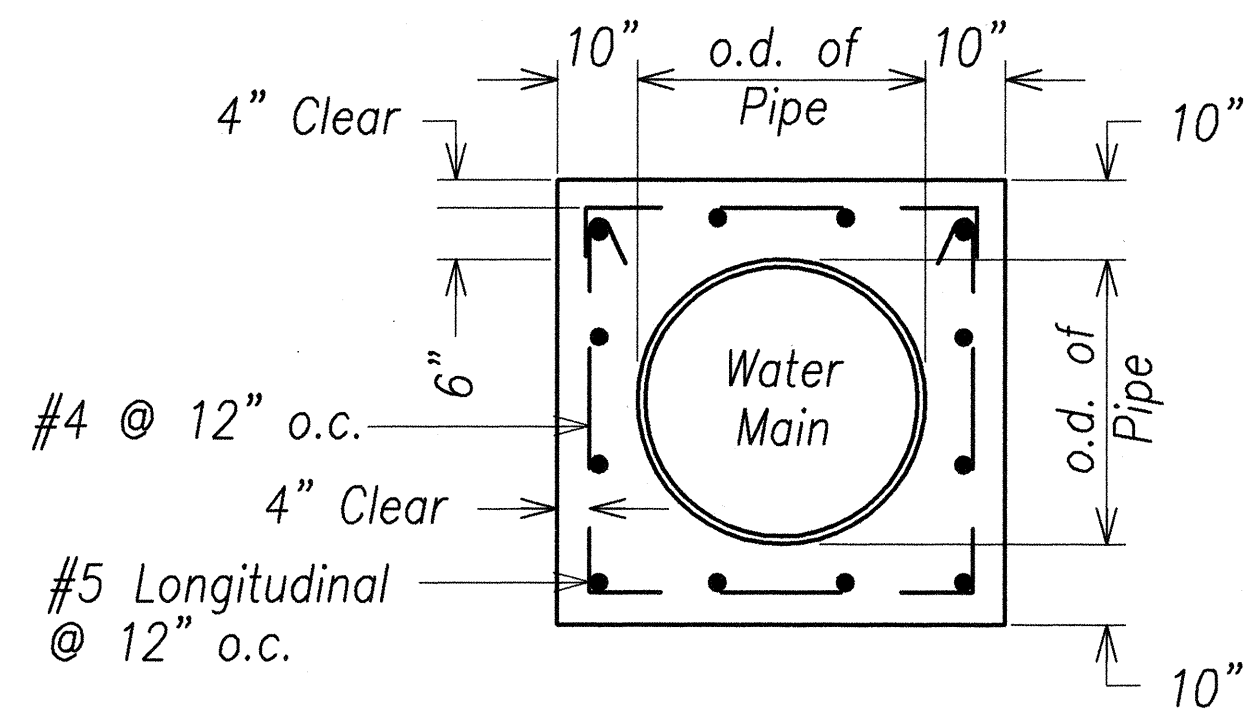
THIS WORK WAS PREPARED BY
ME OR UNDER MY SUPERVISION.
Brian A. Lock
ENGINEERS-SURVEYORS HAWAII, INC.

STATE OF HAWAII
DEPARTMENT OF TRANSPORTATION
HIGHWAYS DIVISION

MISCELLANEOUS DETAILS

VOLCANO ROAD INTERSECTION
IMPROVEMENTS AT HUINA ROAD
State Project No. 11M-01-00
Scale: 1" = 1' Date: November 2001
SHEET No. 2 OF 3 SHEETS

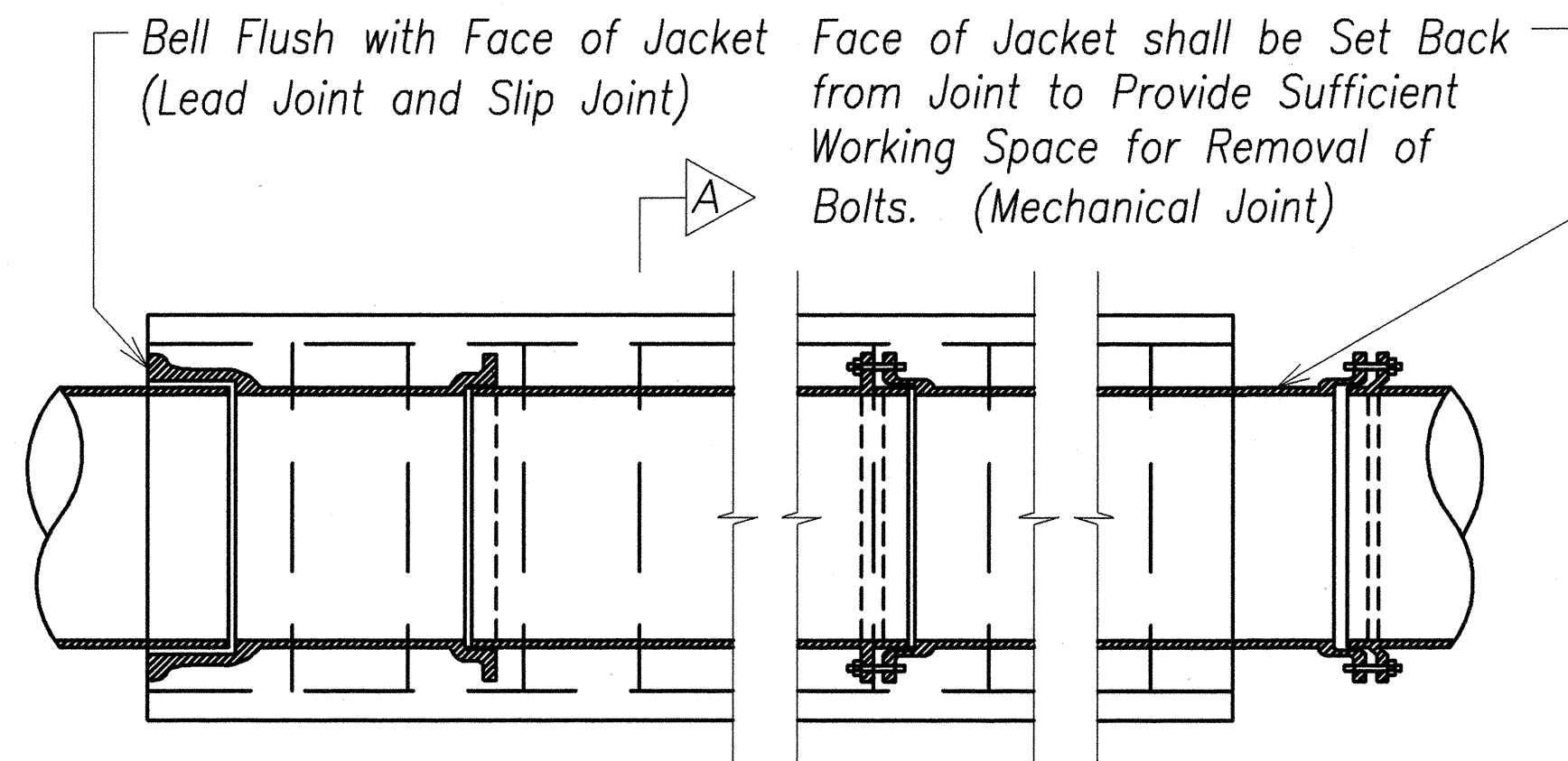
FED. ROAD DIST. NO.	STATE	PROJ. NO.	FISCAL YEAR	SHEET NO.	TOTAL SHEETS
HAWAII	HAW.	11M-01-00	2002	ADD. 33S-1	65



SECTION A-A
Not to Scale

Note:

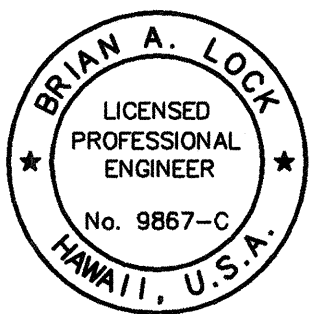
1. 2 1/2" depth of lead for lead joint pipe required at all embedded joints. Wherever construction joints are required 6" rubber or neoprene waterstops shall be installed. Waterstop shall be of the type specified and manufactured by the Kirkhill Rubber Company, or approved equal.
2. No concrete jacketing of A.C. or PVC pipe will be allowed.
3. Concrete shall be Class B.



REINFORCED CONCRETE
JACKET TYPICAL DETAIL
Not to Scale



04/10/02	Add This Sheet to Original Construction Plans.
Date	Revision



THIS WORK WAS PREPARED BY
ME OR UNDER MY SUPERVISION.
Brian A. Lock
ENGINEERS SURVEYORS HAWAII, INC.

STATE OF HAWAII
DEPARTMENT OF TRANSPORTATION
HIGHWAYS DIVISION

MISCELLANEOUS DETAILS

VOLCANO ROAD INTERSECTION
IMPROVEMENTS AT HUINA ROAD
Project No. 11M-01-00

Scale: 1" = 1' Date: April 2002

SHEET No. 3A OF 3 SHEETS

ADD. 33S-1

ORIGINAL PLAN	SURVEY PLOTTED BY	DATE
NOTE BOOK	DESIGNED BY	
11M-01-00	QUANTITIES BY	
3A	CHECKED BY	