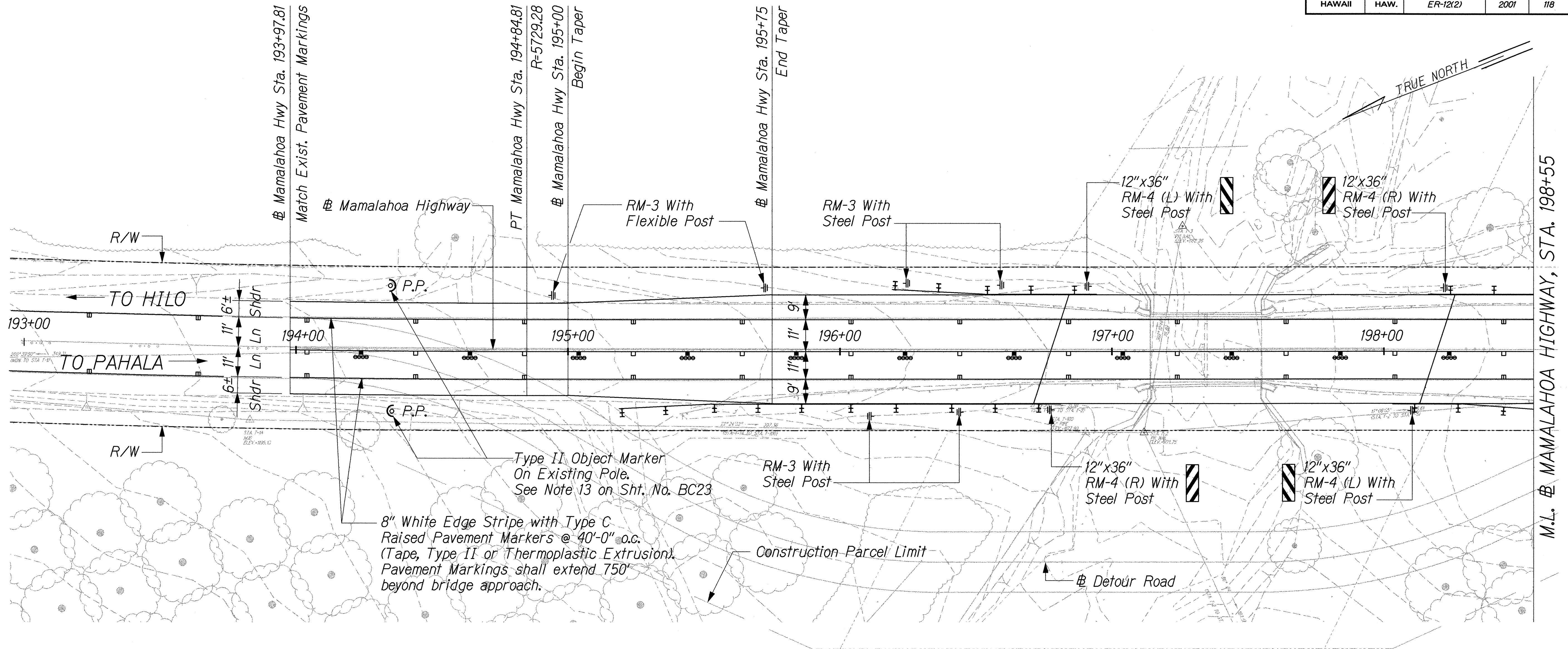


FED. ROAD DIST. NO.	STATE	FED. AID PROJ. NO.	FISCAL YEAR	SHEET NO.	TOTAL SHEETS
HAWAII	HAW.	ER-12(2)	2001	118	145

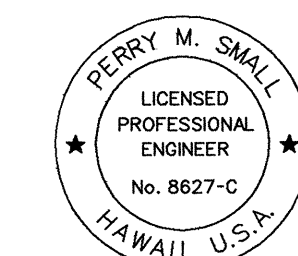


**LEGEND:**

- ⊥ RM-3 With Post (Steel/Flexible)
- ≡≡≡ New Guardrail or End Terminal
- ⊙ Type II Object Marker on Existing Utility Pole

ORIGINAL PLAN	DATE
DRAWN BY	
DESIGNED BY	
QUANTITIES BY	
CHECKED BY	
N.	

MAMALAHOA HIGHWAY SIGNING PMS0202gn May 2001



THIS WORK WAS PREPARED BY ME OR UNDER MY SUPERVISION.  
*Perry M. Small*

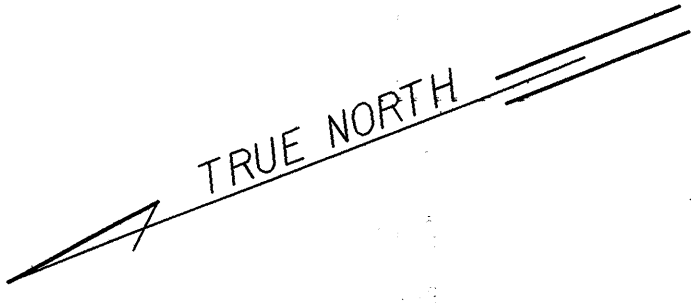
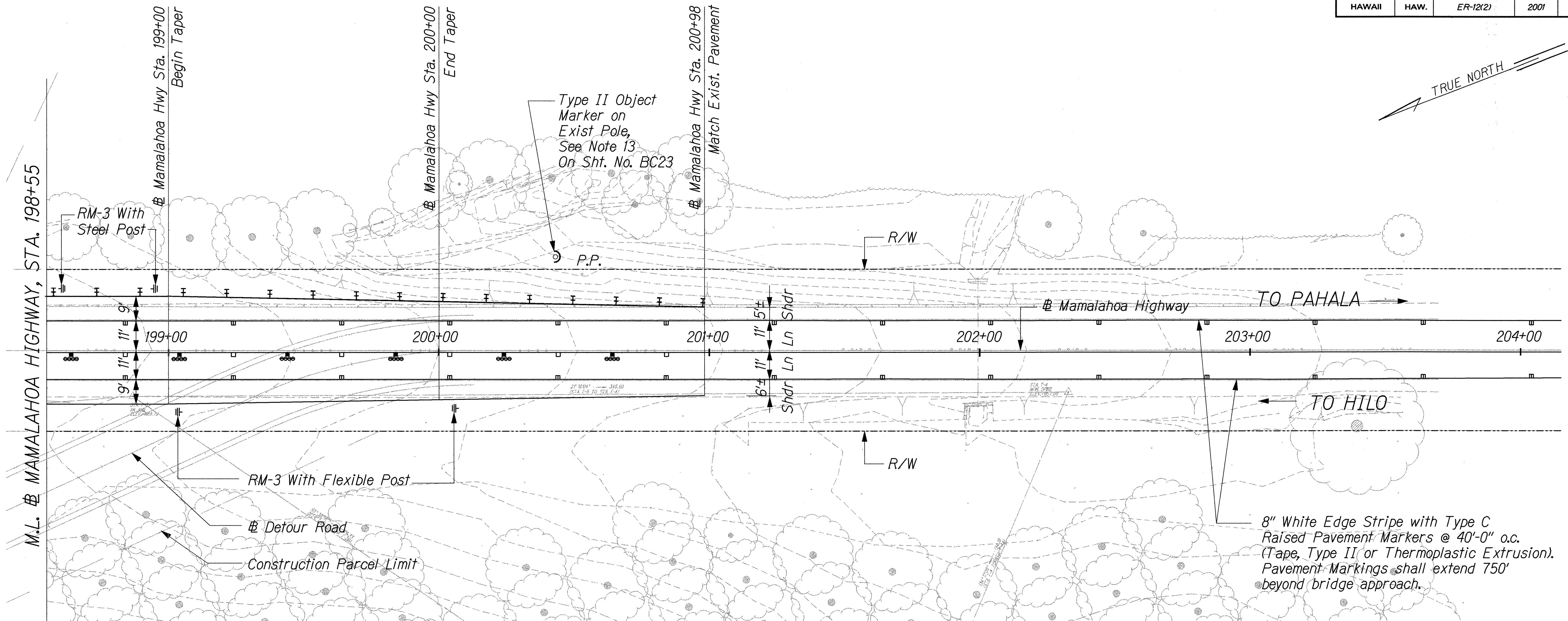
STATE OF HAWAII  
DEPARTMENT OF TRANSPORTATION  
HIGHWAYS DIVISION

**PAVEMENT MARKINGS AND SIGNING**

MAMALAHOA HIGHWAY, EMERGENCY  
REPLACEMENT OF KAALAALA STREAM BRIDGE  
FEDERAL-AID PROJECT NO. ER-12(2), PAHALA, HAWAII  
Scale: 1"=20' Date: February 20, 2001

SHEET No. BC24 OF 28 SHEETS

FED. ROAD DIST. NO.	STATE	FED. AID PROJ. NO.	FISCAL YEAR	SHEET NO.	TOTAL SHEETS
HAWAII	HAW.	ER-12(2)	2001	119	145

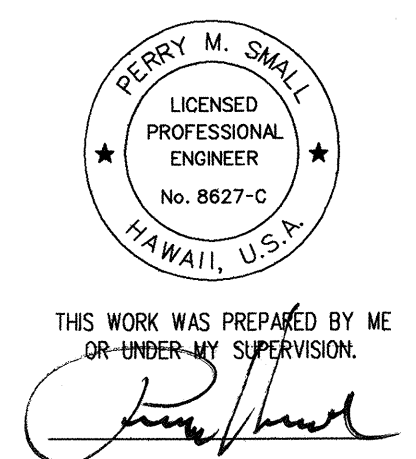


**LEGEND:**

- ⊥ RM-3 With Post (Steel /Flexible)
- ≡≡≡ New Guardrail or End Terminal
- ⊙ Type II Object Marker on Existing Utility Pole

ORIGINAL PLAN	DATE
DESIGNED BY	
DESIGNED BY	
QUANTITIES BY	
CHECKED BY	
N.	

KALAHUA/SGN/PMS02.dgn May 2001



STATE OF HAWAII  
DEPARTMENT OF TRANSPORTATION  
HIGHWAYS DIVISION

**PAVEMENT MARKINGS AND SIGNING**

MAMALAHOA HIGHWAY, EMERGENCY  
REPLACEMENT OF KAALAALA STREAM BRIDGE  
FEDERAL-AID PROJECT NO. ER-12(2), PAHALA, HAWAII  
Scale: 1"=20' Date: February 20, 2001

SHEET No. BC25 OF 28 SHEETS