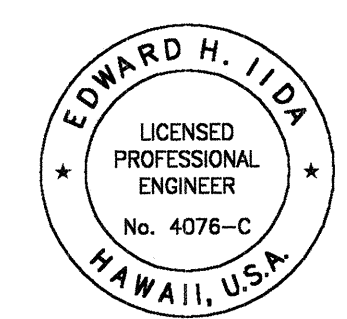
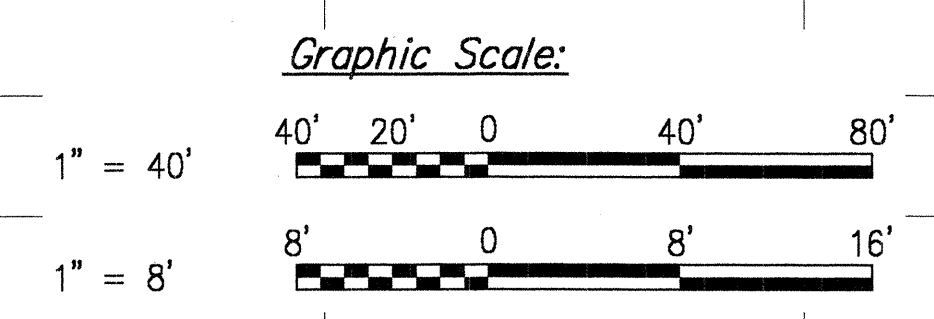
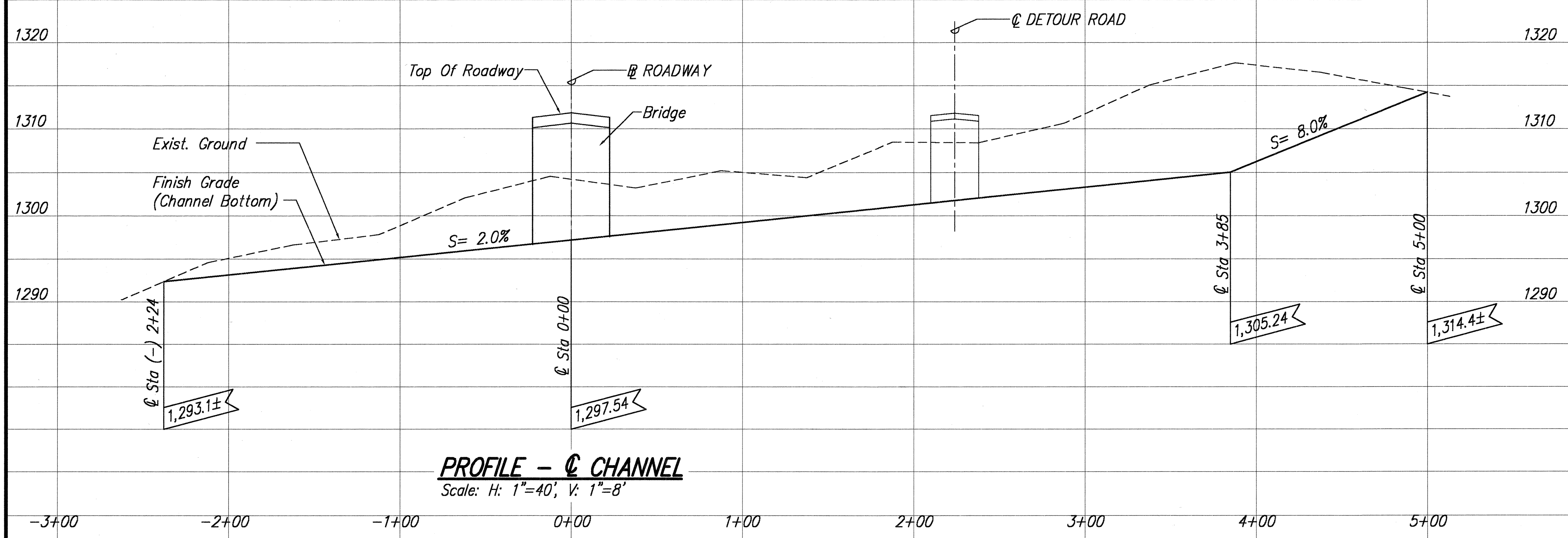


FED. ROAD DIST. NO.	STATE	FED. AID PROJ. NO.	FISCAL YEAR	SHEET NO.	TOTAL SHEETS
HAWAII	HAWAII	ER-12(2)	2001	15	145



STATE OF HAWAII
DEPARTMENT OF TRANSPORTATION
HIGHWAYS DIVISION

CHANNEL PROFILE
MAMALAHOA HIGHWAY
EMERGENCY REPLACEMENT OF
FORD CROSSING

Federal Aid Project No. ER-12(2)
Scale: As Noted Date: Feb. 2001

SHEET No. **AC-14** OF **29** SHEETS

THIS WORK WAS PREPARED BY ME OR
UNDER MY SUPERVISION
Edward H. Iida
MITSUNAGA & ASSOCIATES

ORIGINAL PLAN	DATE
DESIGNED BY	
TRACED BY	
QUANTITIES BY	
CHECKED BY	
NO.	