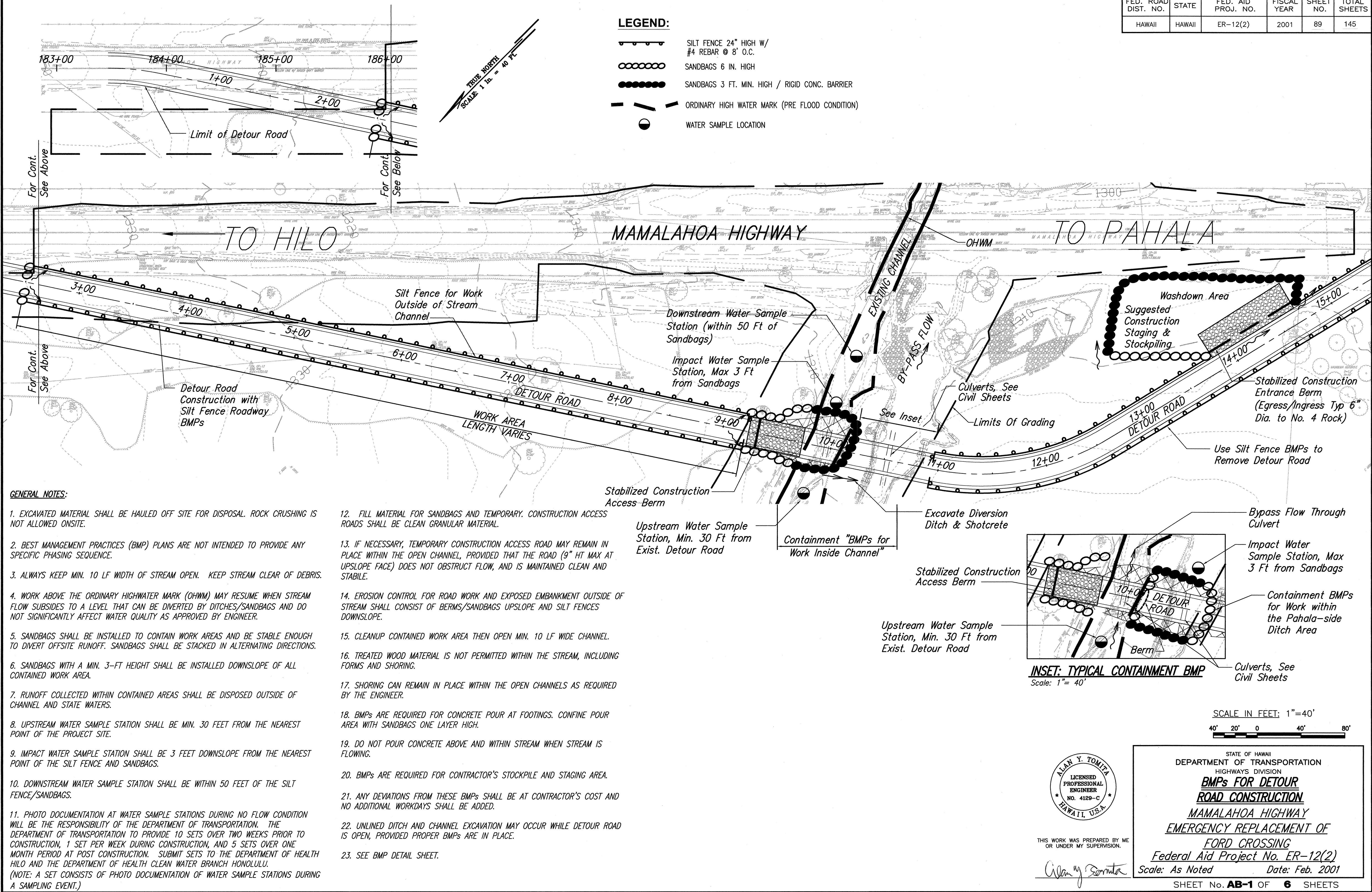
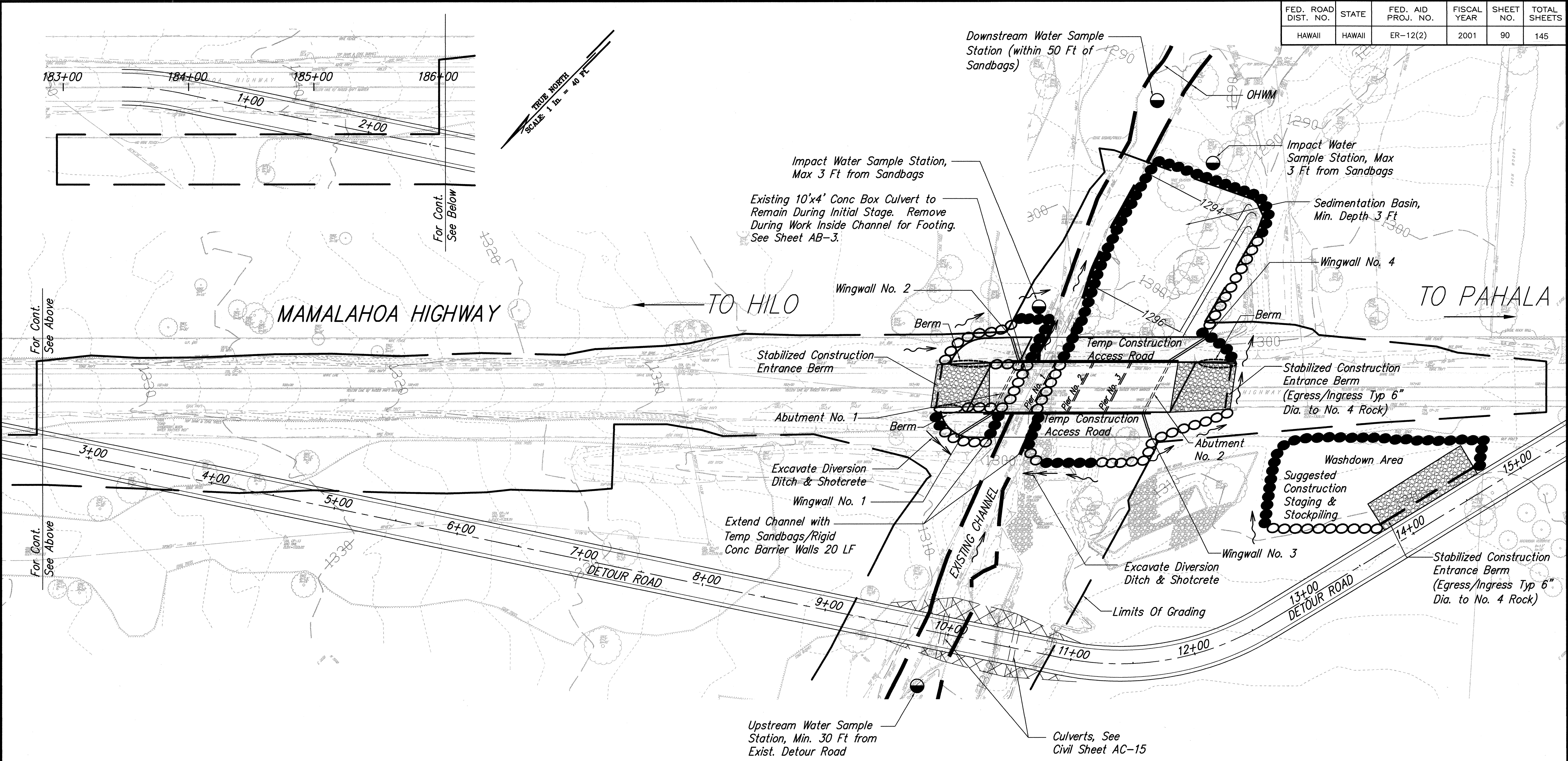


FED. ROAD DIST. NO.	STATE	FED. AID PROJ. NO.	FISCAL YEAR	SHEET NO.	TOTAL SHEETS
HAWAII	HAWAII	ER-12(2)	2001	89	145





FED. ROAD DIST. NO.	STATE	FED. AID PROJ. NO.	FISCAL YEAR	SHEET NO.	TOTAL SHEETS
HAWAII	HAWAII	ER-12(2)	2001	90	145

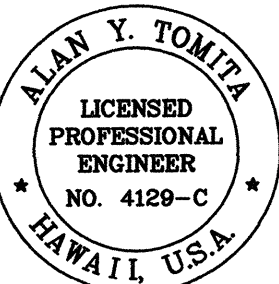


LEGEND:

- SILT FENCE 24" HIGH W/ #4 REBAR @ 8' O.C.
- SANDBAGS 6 IN. HIGH
- SANDBAGS 3 FT. MIN. HIGH / RIGID CONC. BARRIER
- ORDINARY HIGH WATER MARK (PRE FLOOD CONDITION)
- WATER SAMPLE LOCATION

SCALE IN FEET: 1"=40'

40' 20' 0 40' 80'



THIS WORK WAS PREPARED BY ME OR UNDER MY SUPERVISION.

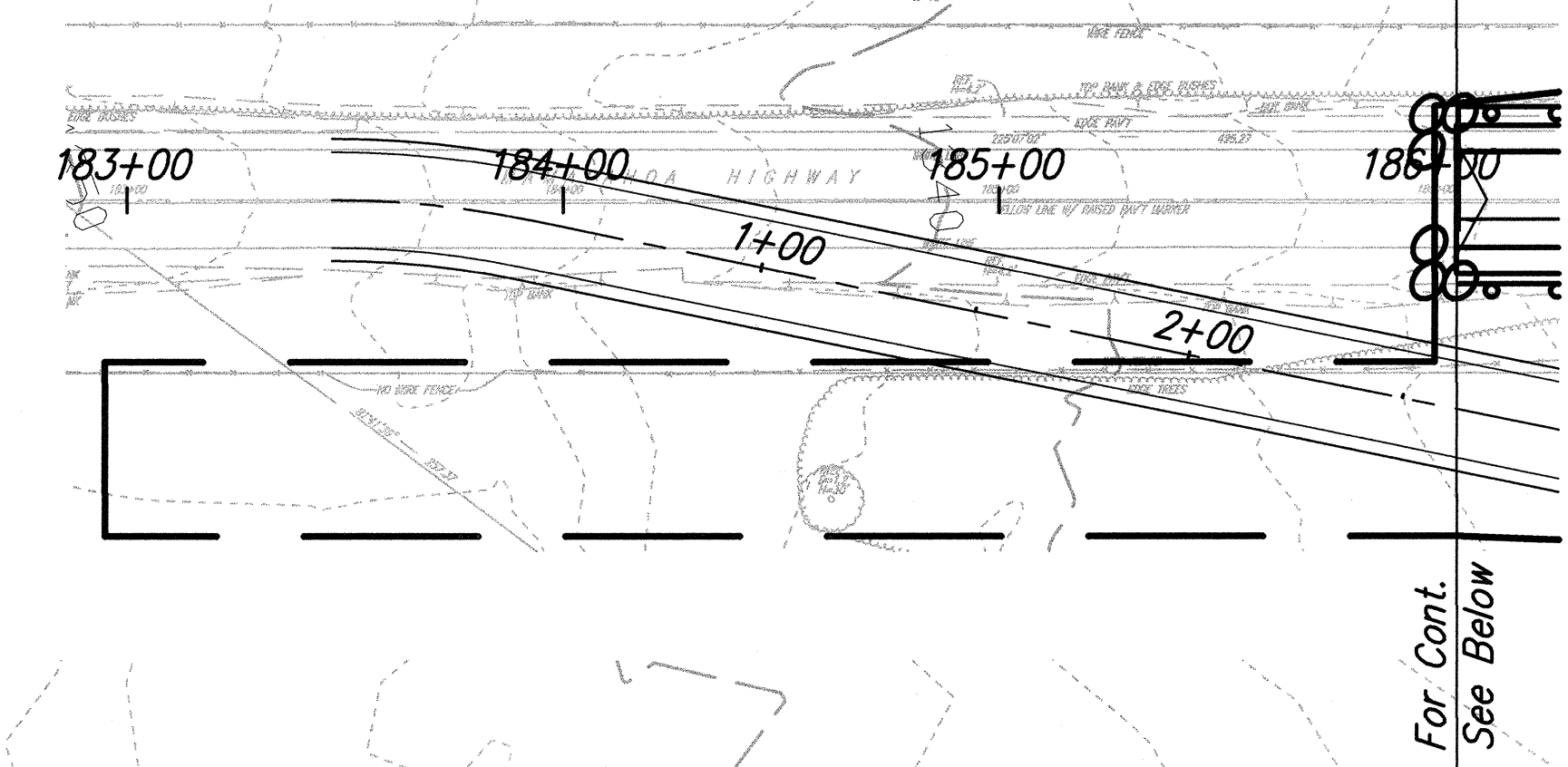
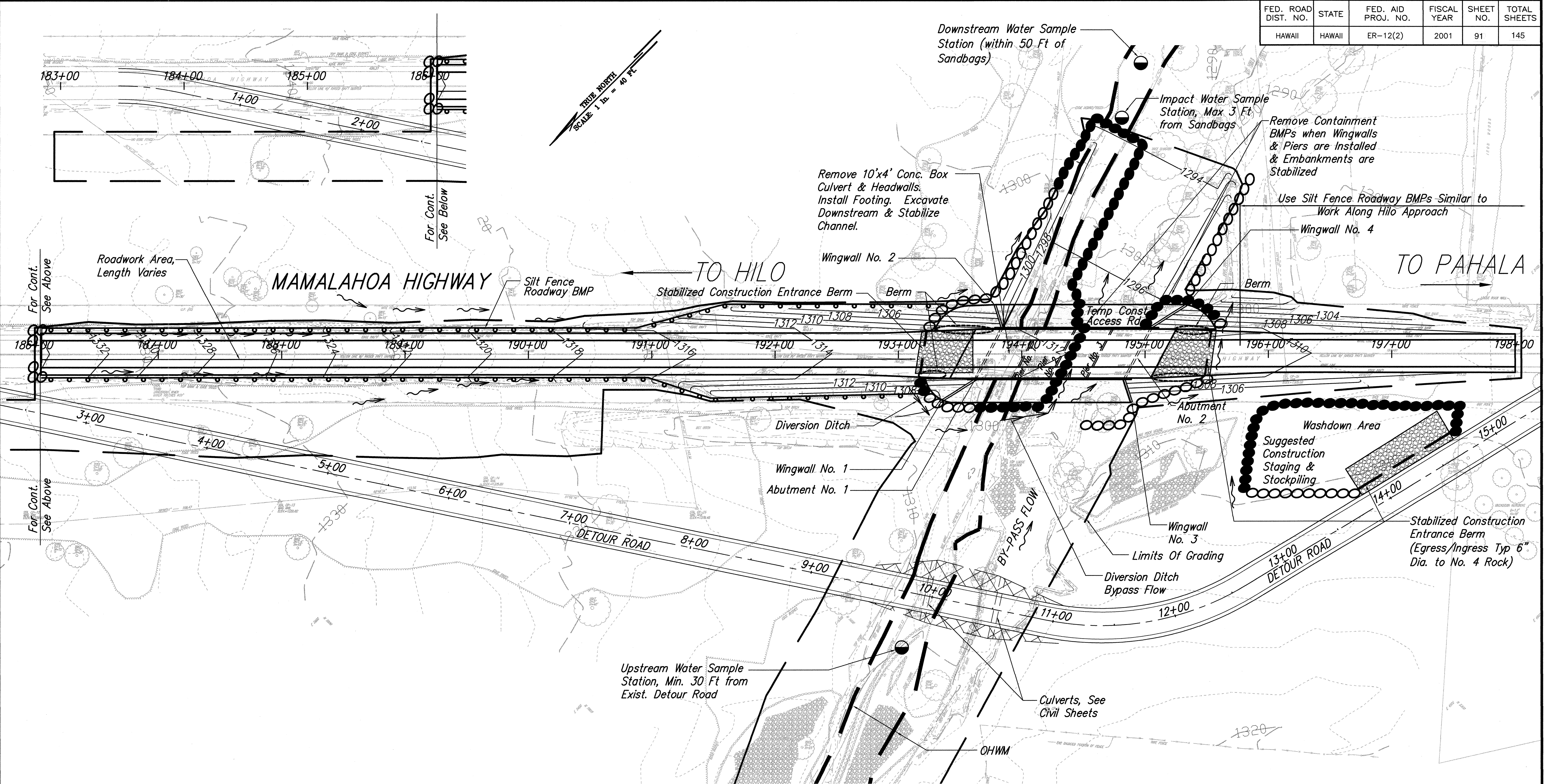
Alan Y. Tomita

STATE OF HAWAII  
DEPARTMENT OF TRANSPORTATION  
HIGHWAYS DIVISION  
**BMPs FOR BRIDGE CONSTRUCTION**  
**MAMALAHOA HIGHWAY**  
**EMERGENCY REPLACEMENT OF FORD CROSSING**  
**Federal Aid Project No. ER-12(2)**  
Scale: As Noted Date: Feb. 2001

SHEET No. **AB-2** OF **6** SHEETS



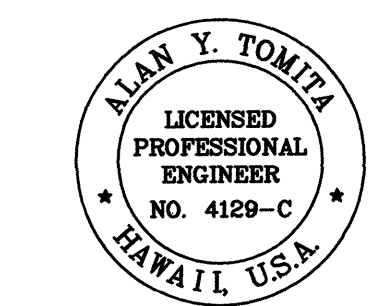
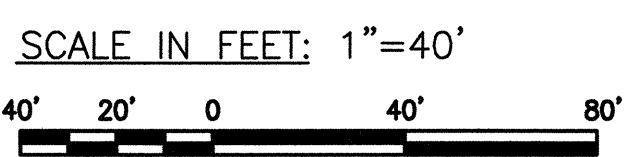
FED. ROAD DIST. NO.	STATE	FED. AID PROJ. NO.	FISCAL YEAR	SHEET NO.	TOTAL SHEETS
HAWAII	HAWAII	ER-12(2)	2001	91	145



LEGEND:

- SILT FENCE 24" HIGH W/ #4 REBAR @ 8' O.C.
- SANDBAGS 6 IN. HIGH
- SANDBAGS 3 FT. MIN. HIGH / RIGID CONC. BARRIER
- ORDINARY HIGH WATER MARK (PRE FLOOD CONDITION)
- WATER SAMPLE LOCATION

ORIGINAL PLAN	SURVEY PLOTTED BY	DATE
NOTE BOOK	DRAWN BY	Feb. 2001
QUANTITIES BY	DESIGNED BY	
Checked by	Checked by	Feb. 2001



THIS WORK WAS PREPARED BY ME  
OR UNDER MY SUPERVISION.

*Alan Y. Tomita*

STATE OF HAWAII  
DEPARTMENT OF TRANSPORTATION  
HIGHWAYS DIVISION

**BMPs FOR BRIDGE  
AND ROAD CONSTRUCTION**

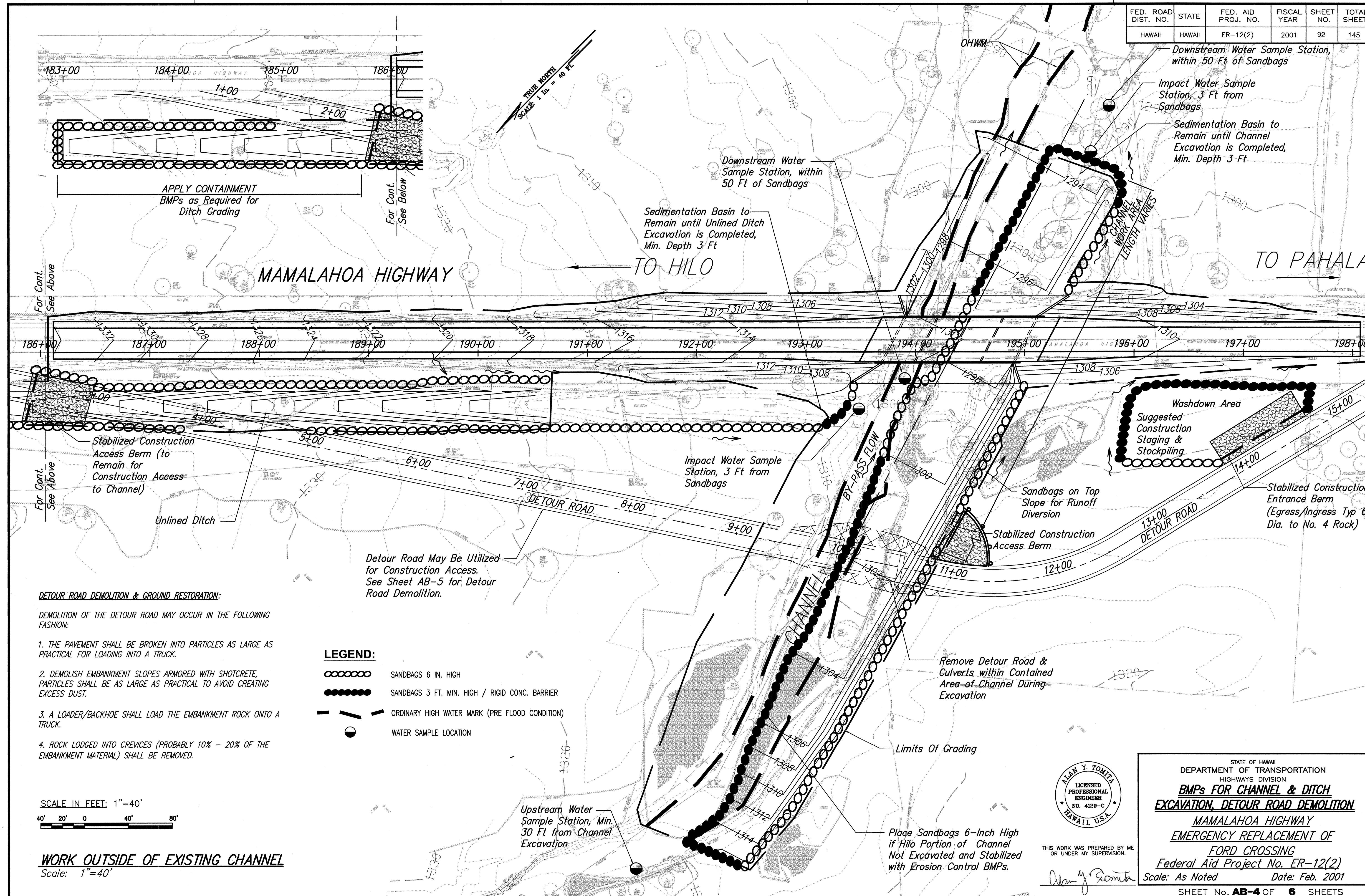
**MAMALAHOA HIGHWAY  
EMERGENCY REPLACEMENT OF  
FORD CROSSING**

Federal Aid Project No. ER-12(2)  
Scale: As Noted Date: Feb. 2001

SHEET No. **AB-3** OF **6** SHEETS

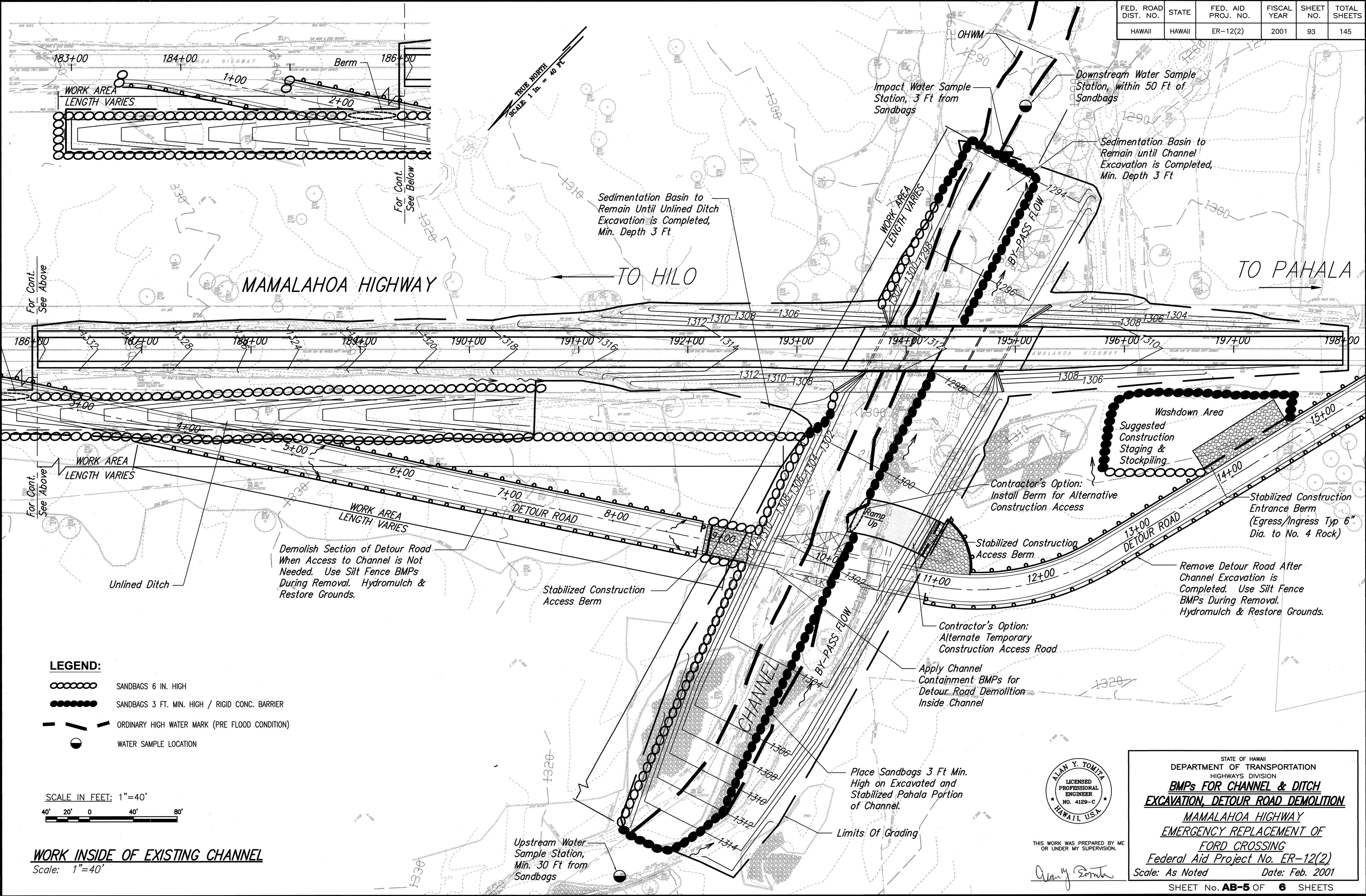


FED. ROAD DIST. NO.	STATE	FED. AID PROJ. NO.	FISCAL YEAR	SHEET NO.	TOTAL SHEET
HAWAII	HAWAII	ER-12(2)	2001	92	145



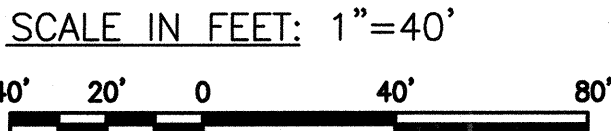


FED. ROAD DIST. NO.	STATE	FED. AID PROJ. NO.	FISCAL YEAR	SHEET NO.	TOTAL SHEETS
HAWAII	HAWAII	ER-12(2)	2001	93	145



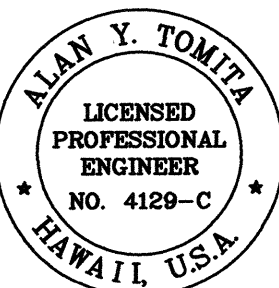
LEGEND:

- SANDBAGS 6 IN. HIGH
- SANDBAGS 3 FT. MIN. HIGH / RIGID CONC. BARRIER
- ORDINARY HIGH WATER MARK (PRE FLOOD CONDITION)
- WATER SAMPLE LOCATION



WORK INSIDE OF EXISTING CHANNEL  
Scale: 1"=40'

ORIGINAL PLAN	DATE
SURVEY PLATTED BY	Feb. 2001
DRAWN BY	
DESIGNED BY	
CHECKED BY	
NOTED BY	
QUANTITIES BY	
FILED BY	



THIS WORK WAS PREPARED BY ME OR UNDER MY SUPERVISION.

Alan Y. Tomita

STATE OF HAWAII  
DEPARTMENT OF TRANSPORTATION  
HIGHWAYS DIVISION

**BMPs FOR CHANNEL & DITCH  
EXCAVATION, DETOUR ROAD DEMOLITION**

MAMALAHOA HIGHWAY  
EMERGENCY REPLACEMENT OF  
FORD CROSSING  
Federal Aid Project No. ER-12(2)

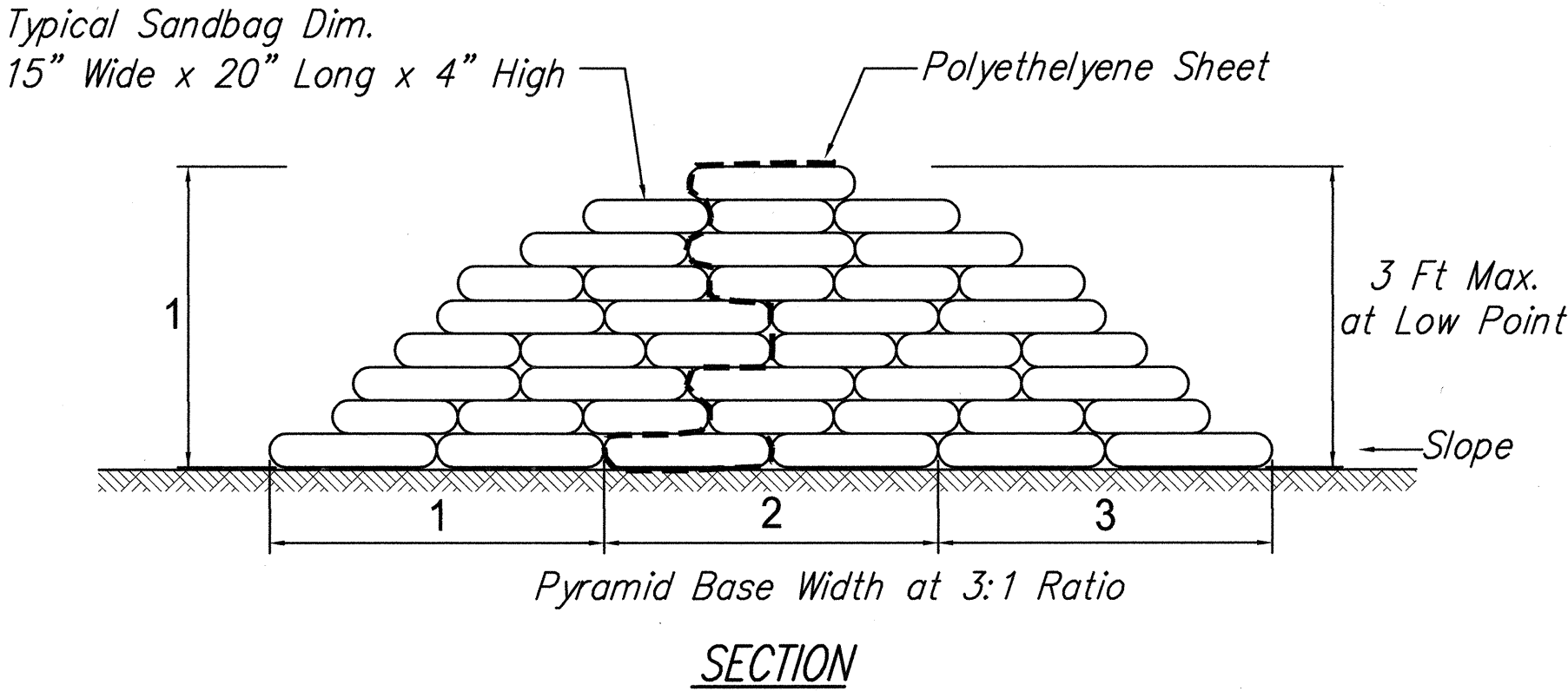
Scale: As Noted      Date: Feb. 2001

SHEET No. **AB-5** OF **6** SHEETS

93



FED. ROAD DIST. NO.	STATE	FED. AID PROJ. NO.	FISCAL YEAR	SHEET NO.	TOTAL SHEETS
HAWAII	HAWAII	ER-12(2)	2001	94	145

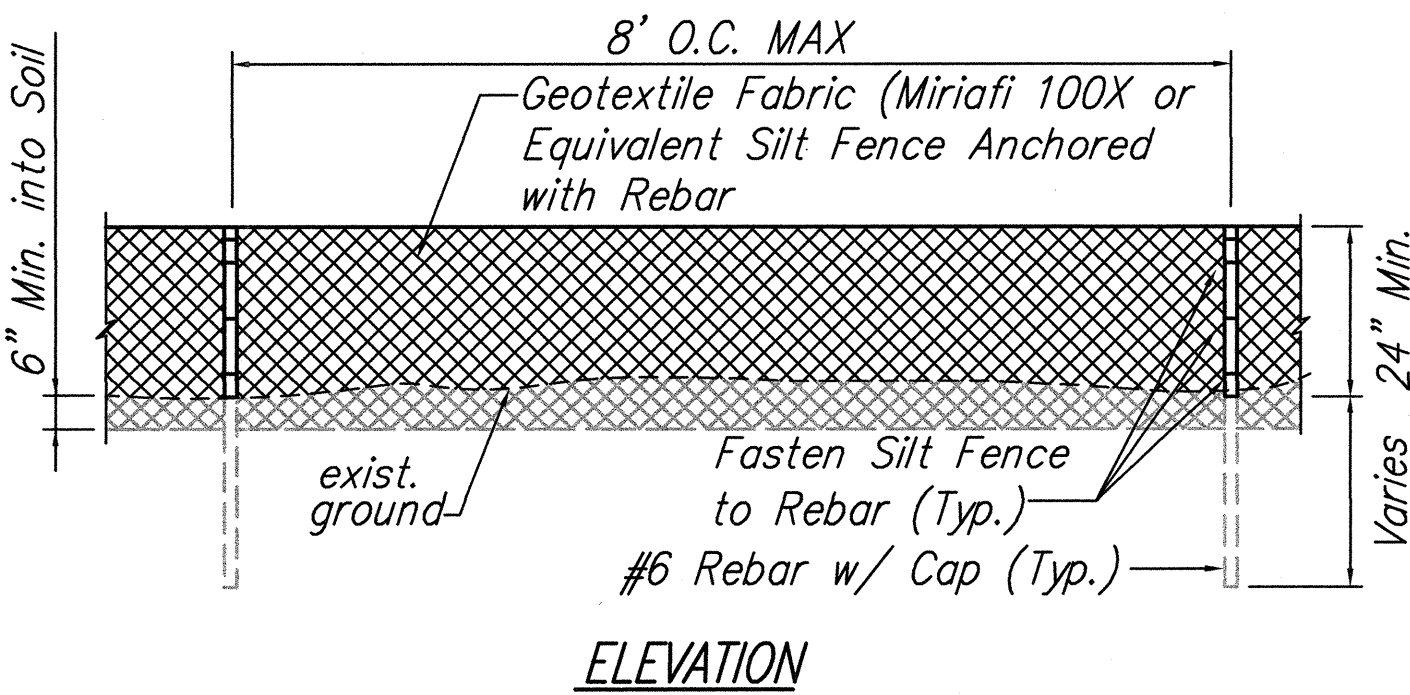
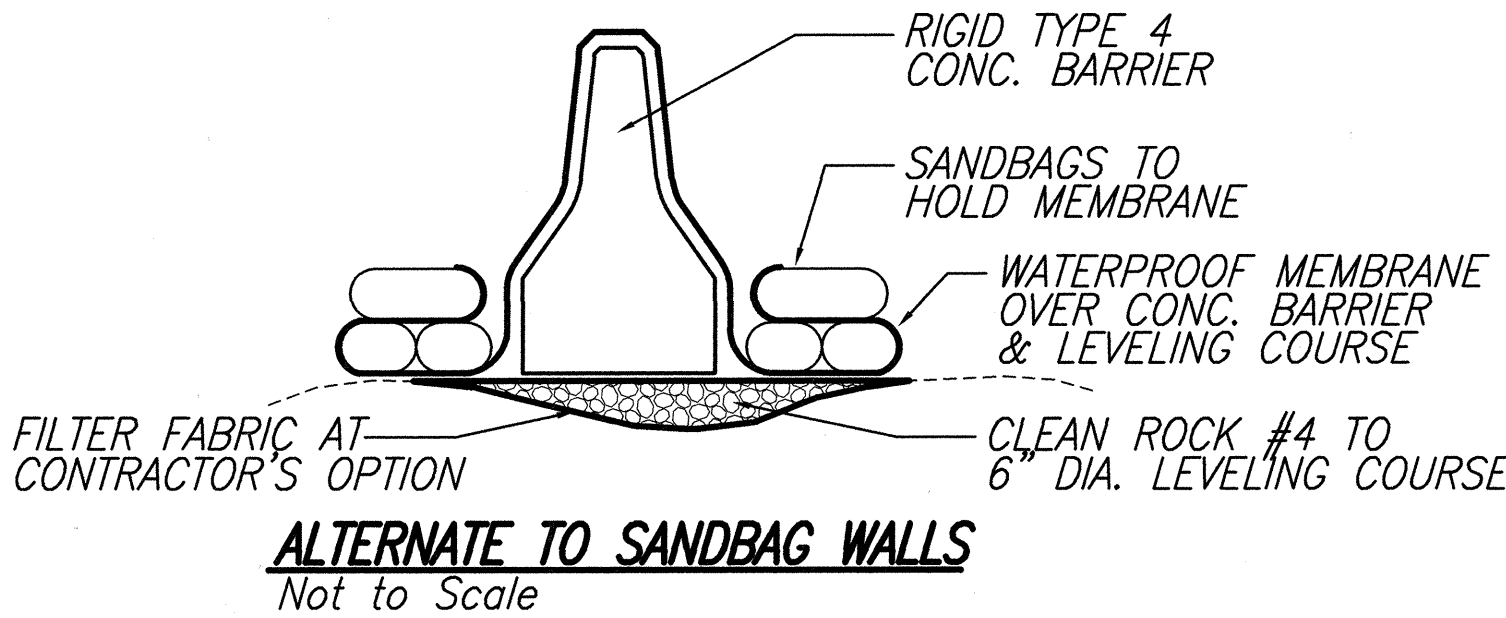


**NOTES:**

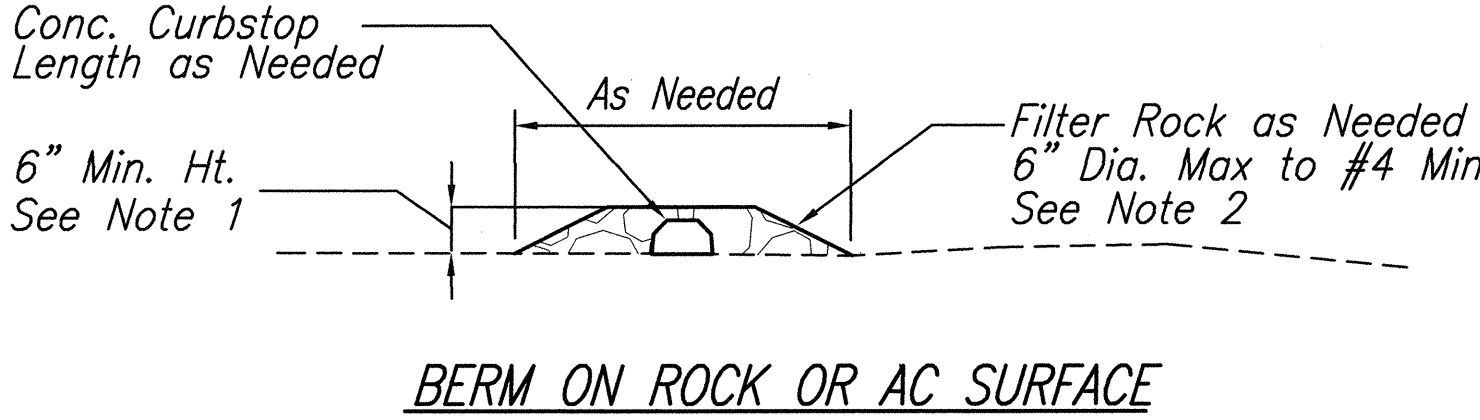
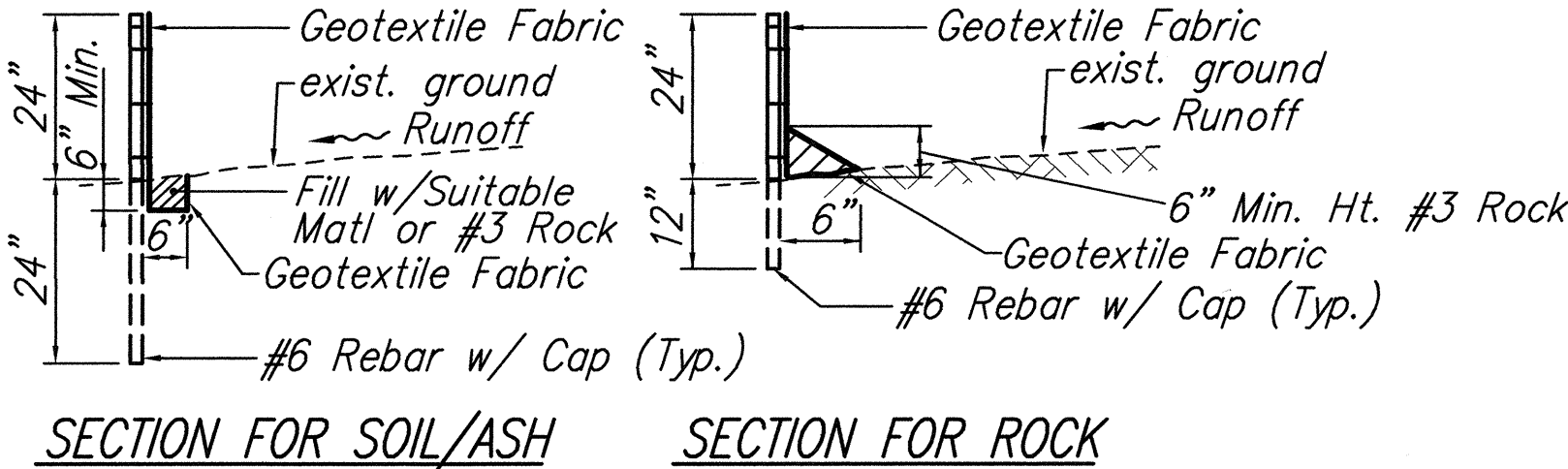
1. STACK SANDBAGS SIMILAR TO AS SHOWN. STACK IN ALTERNATING DIRECTIONS.
2. STRIP VEGETATION AND DEBRIS BEFORE LAYING SANDBAGS.
3. SANDBAGS SHOULD BE FILLED ONE-HALF TO TWO-THIRDS FULL.
4. PLACE THE SUCCEEDING BAGS ON THE UNFILLED OR TIED PORTION OF THE PREVIOUSLY LAYED BAGS AND TAMP INTO PLACE TO ELIMINATE VOIDS AND FORM A TIGHT SEAL.
5. STAGGER THE JOINTS WHEN MULTIPLE LAYERS ARE LAID AND STACK SANDBAGS IN A PYRAMID FORMATION.
6. CONSTRUCT THE SANDBAG WALL BASE WIDTH THREE TIMES THE SANDBAG WALL HEIGHT.

HEIGHT	SANDBAGS REQ'D	TONS OF SAND
1'	360	15 Tons
2'	1,260	53 Tons
3'	2,780	116 Tons

**SANDBAG WALL SECTION**  
Not to Scale



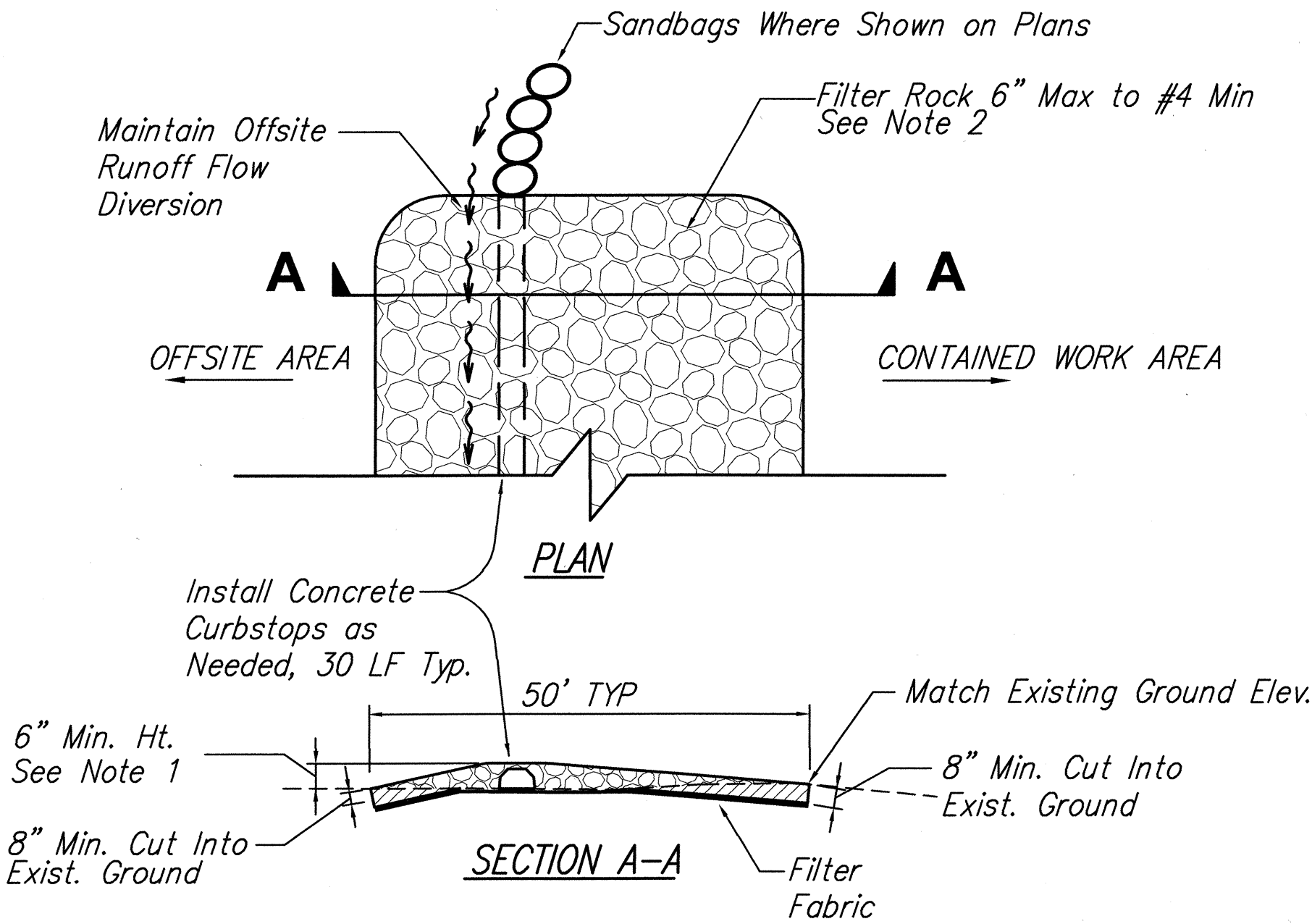
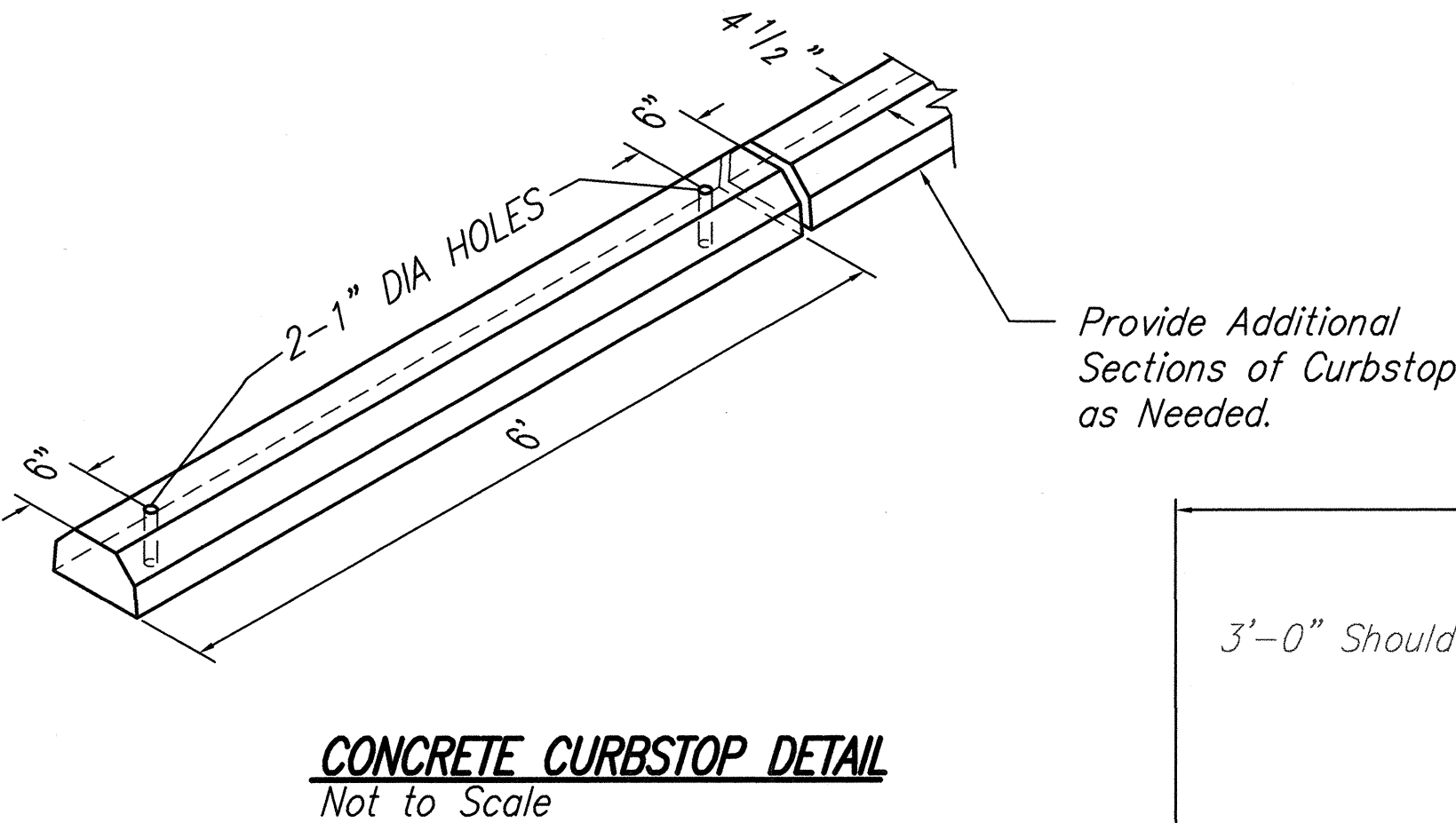
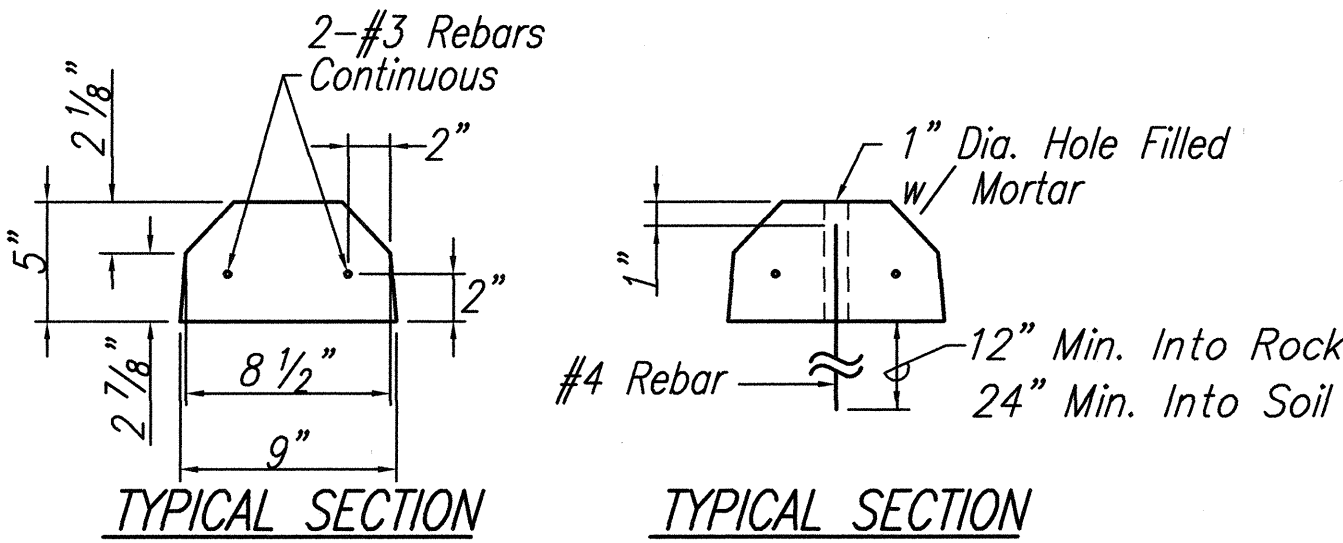
**SILT FENCE DETAIL**  
Not to Scale



**NOTES:**

1. MAINTAIN OFFSITE FLOW DIVERSION ACROSS ENTRANCE.
2. FILTER ROCK SHALL BE MAINTAINED AGAINST AGGREGATE LOSS, RUTTING AND TRACKED SOIL DEPOSIT.

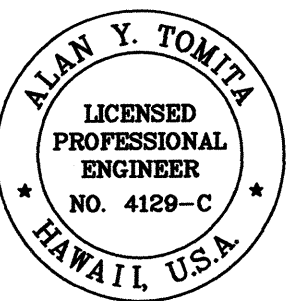
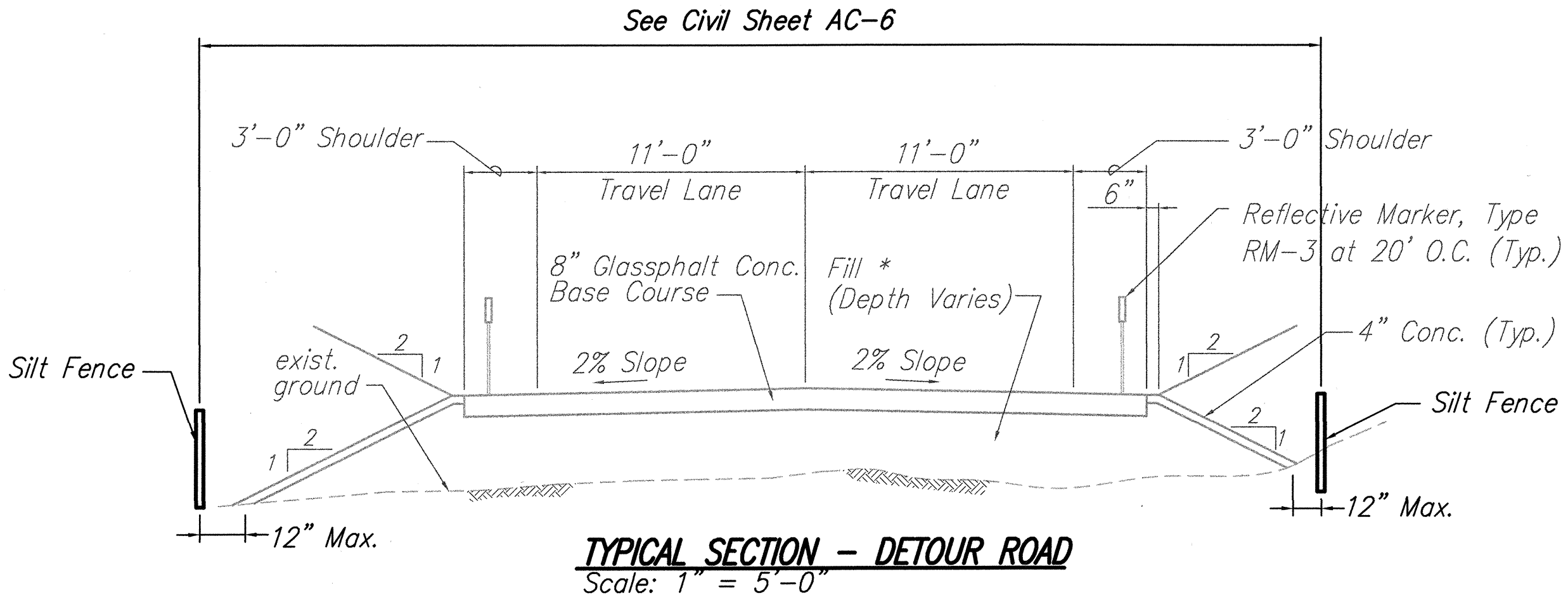
**TYPICAL BERM**  
Not To Scale



**NOTES:**

1. MAINTAIN OFFSITE FLOW DIVERSION ACROSS ENTRANCE.
2. FILTER ROCK SHALL BE MAINTAINED AGAINST AGGREGATE LOSS, RUTTING AND TRACKED SOIL DEPOSIT.

**STABILIZED CONSTRUCTION ENTRANCE BERM**  
Not to Scale



THIS WORK WAS PREPARED BY ME OR UNDER MY SUPERVISION.

*Alan Y. Tomita*

STATE OF HAWAII  
DEPARTMENT OF TRANSPORTATION  
HIGHWAYS DIVISION  
**BMP DETAILS**  
MAMALAHOA HIGHWAY  
EMERGENCY REPLACEMENT OF  
FORD CROSSING  
Federal Aid Project No. ER-12(2)  
Scale: As Noted Date: Feb. 2001  
SHEET No. **AB-6** OF **6** SHEETS

94

SURVEY PLATTED BY	DATE
DRAWN BY	Feb. 2001
DESIGNED BY	Feb. 2001
QUANTITIES BY	
CHECKED BY	
ORIGINAL PLAN	
NOTE BOOK	
No.	