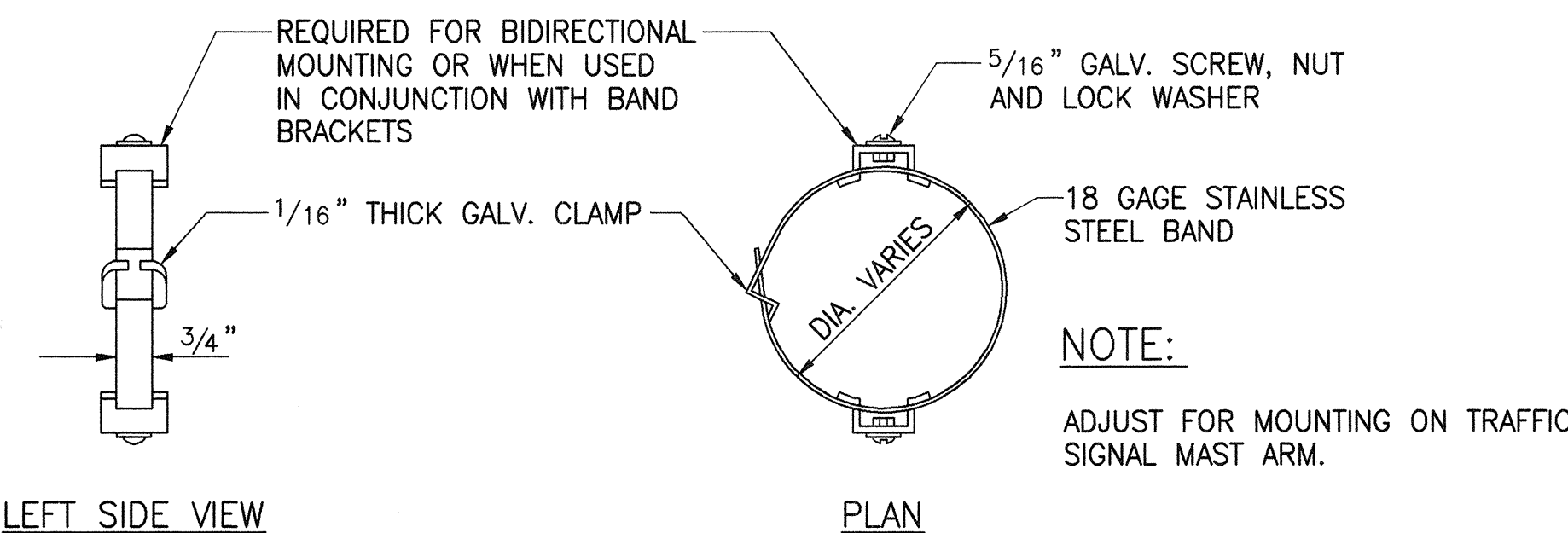
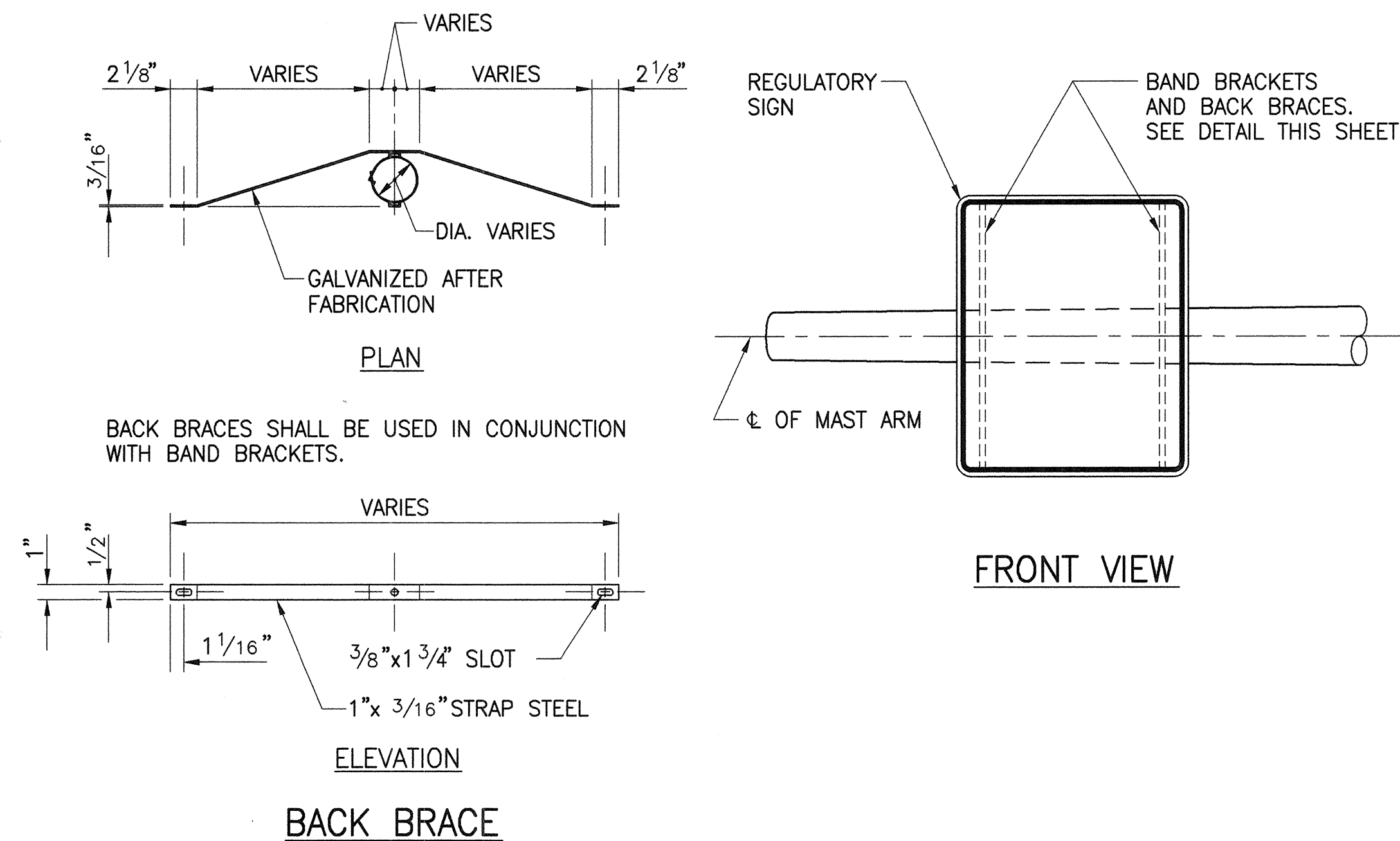


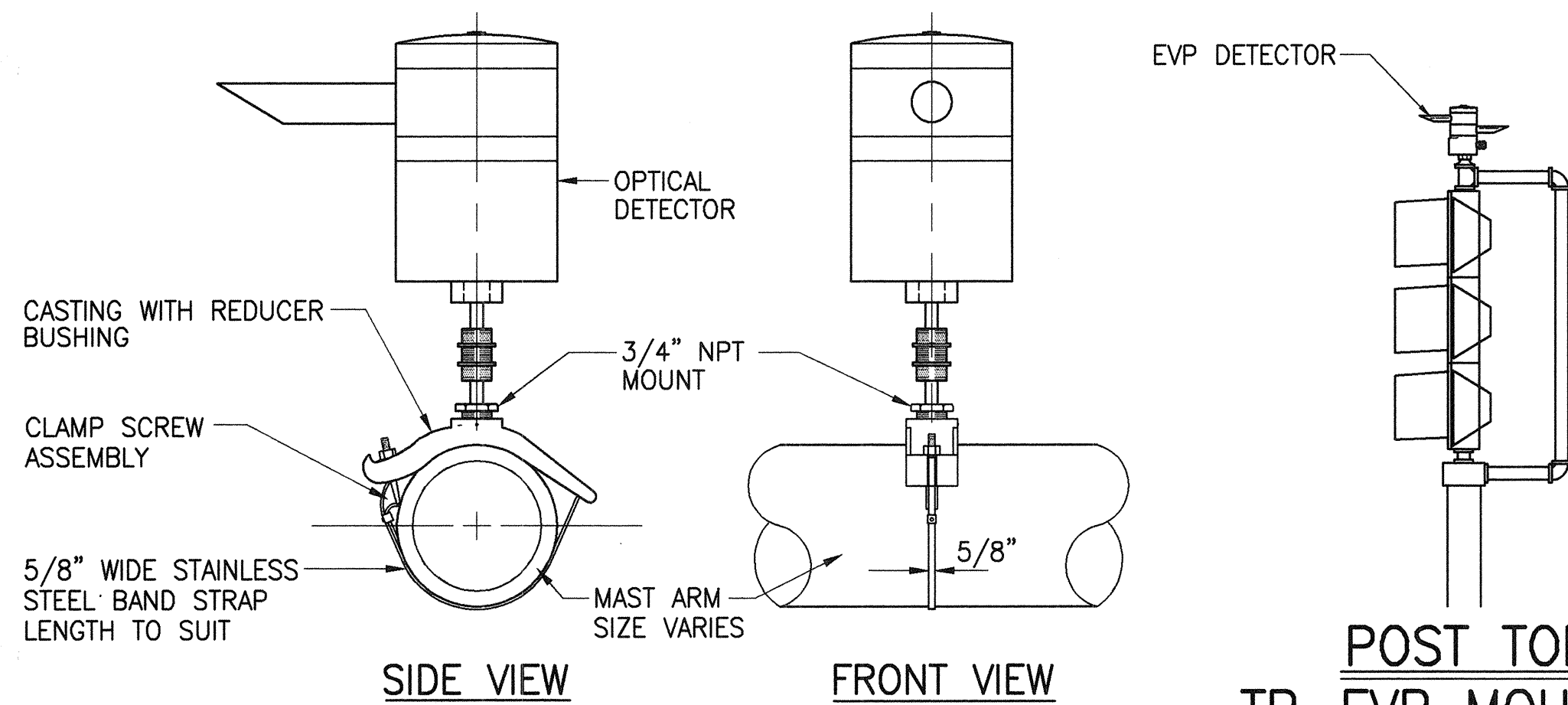
FED. ROAD DIST. NO.	STATE	FED. AID PROJ. NO.	FISCAL YEAR	SHEET NO.	TOTAL SHEETS
HAWAII	HAW.	STP-011-1(22)	1999	8	14



BAND BRACKET

TYPICAL SIGN MOUNTING ON MAST ARM

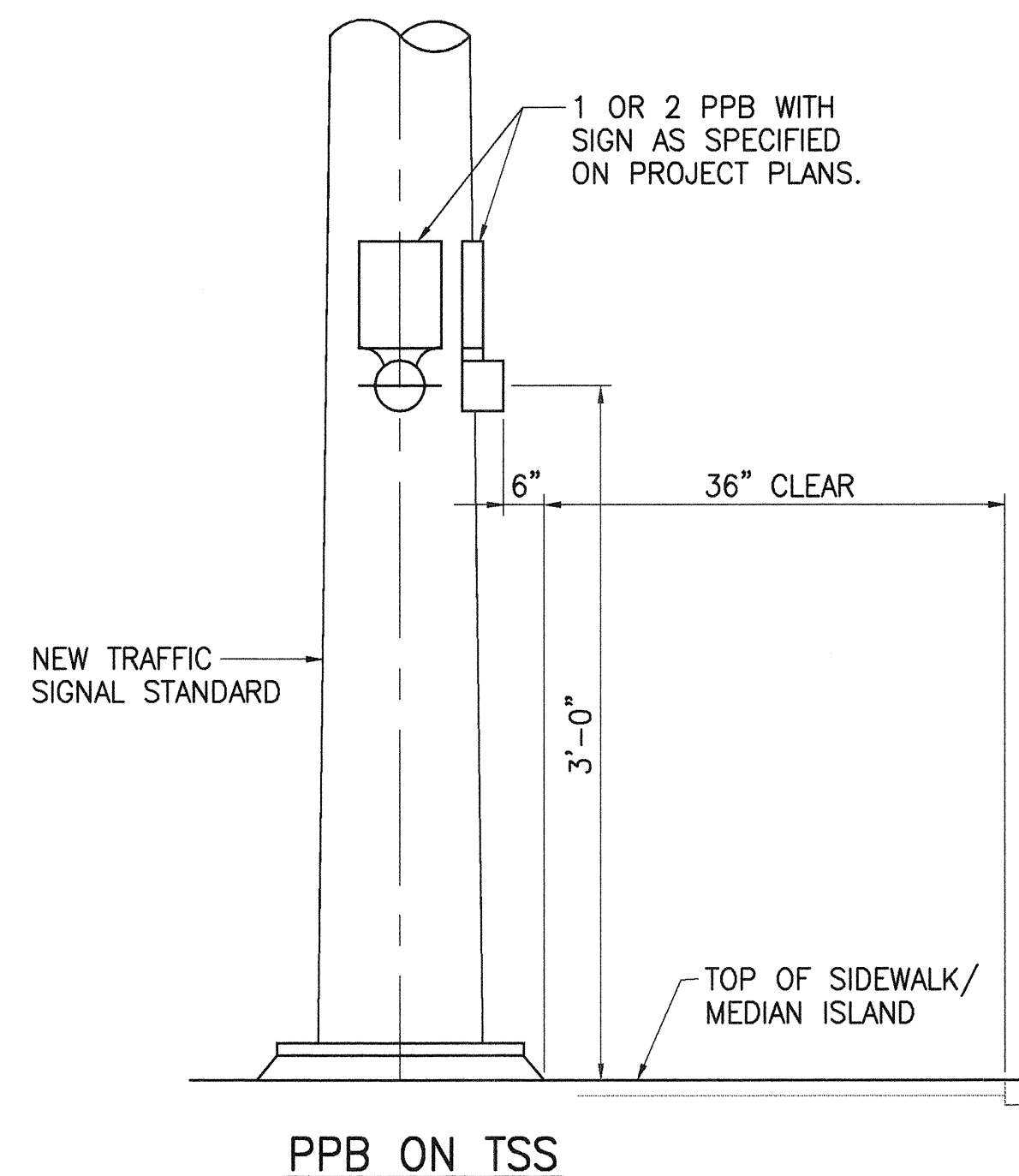
NOT TO SCALE



- NOTES:**
- OPTICAL DETECTOR SHALL BE "OPTICOM M711 OPTICAL DETECTOR", OR APPROVED EQUAL, UNLESS NOTED OTHERWISE IN THE SPECIAL PROVISIONS.
 - SUPPORT SADDLE ASSEMBLY SHALL BE "ASTRO MINI-BRAC, AB-0132-29", OR APPROVED EQUAL, UNLESS NOTED OTHERWISE IN THE SPECIAL PROVISIONS.

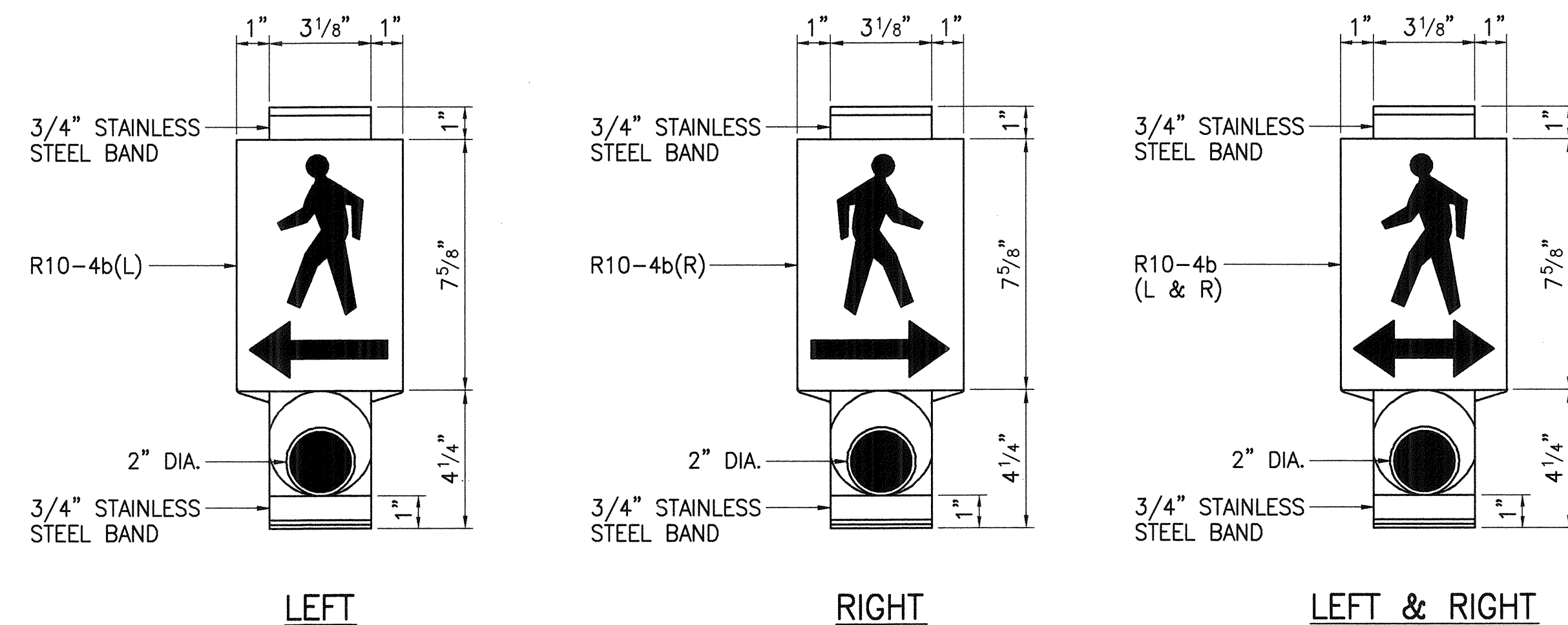
OPTICAL DETECTOR FOR MAST ARM MOUNTING

NOT TO SCALE



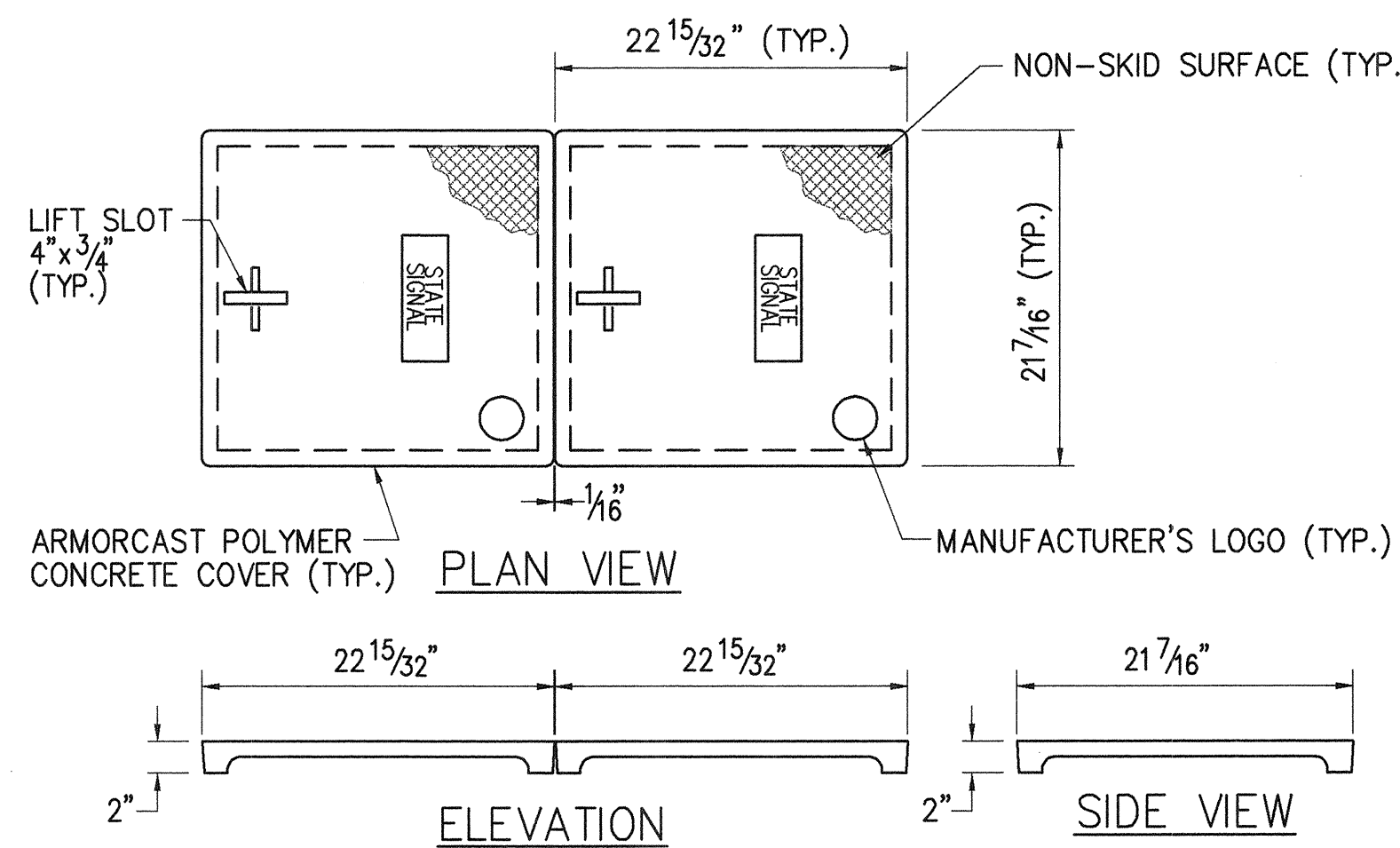
NOTE: ON PLAN SHEET, USE APPLICABLE DETAIL.

THE COLOR SCHEME SHALL BE:
WHITE - MAN, ARROW AND PUSH BUTTON
BLACK - BACKGROUND



PEDESTRIAN PUSH BUTTON DETAILS

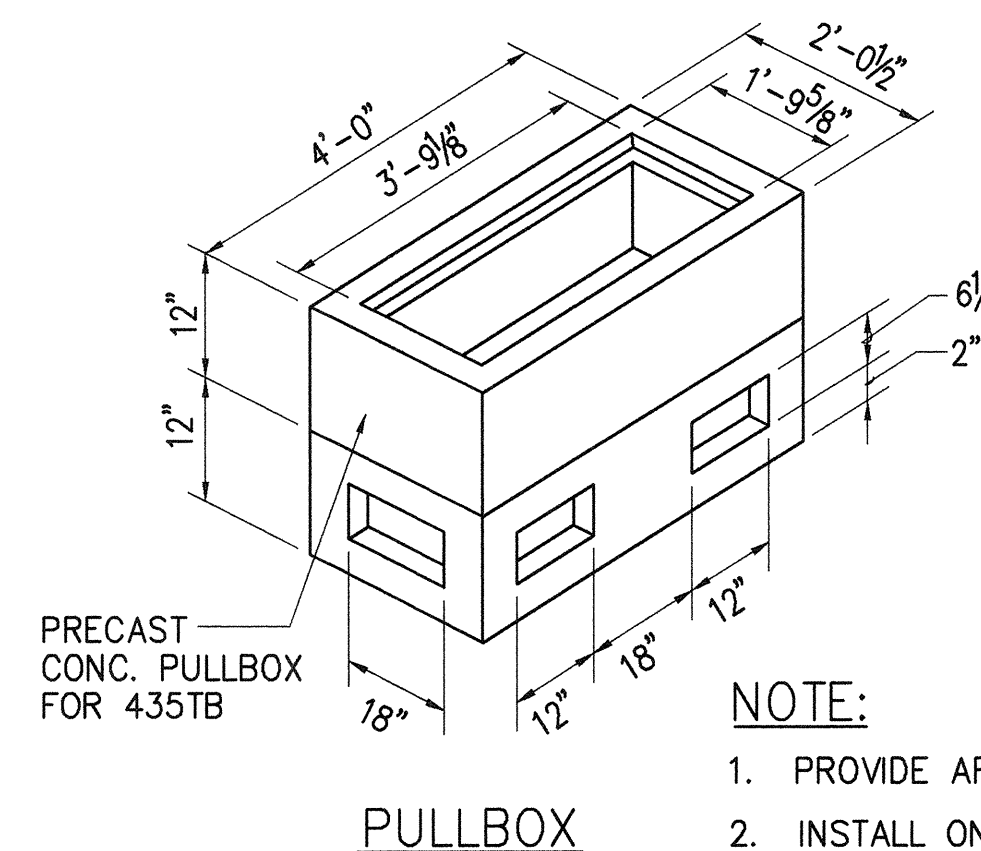
NOT TO SCALE



COVER

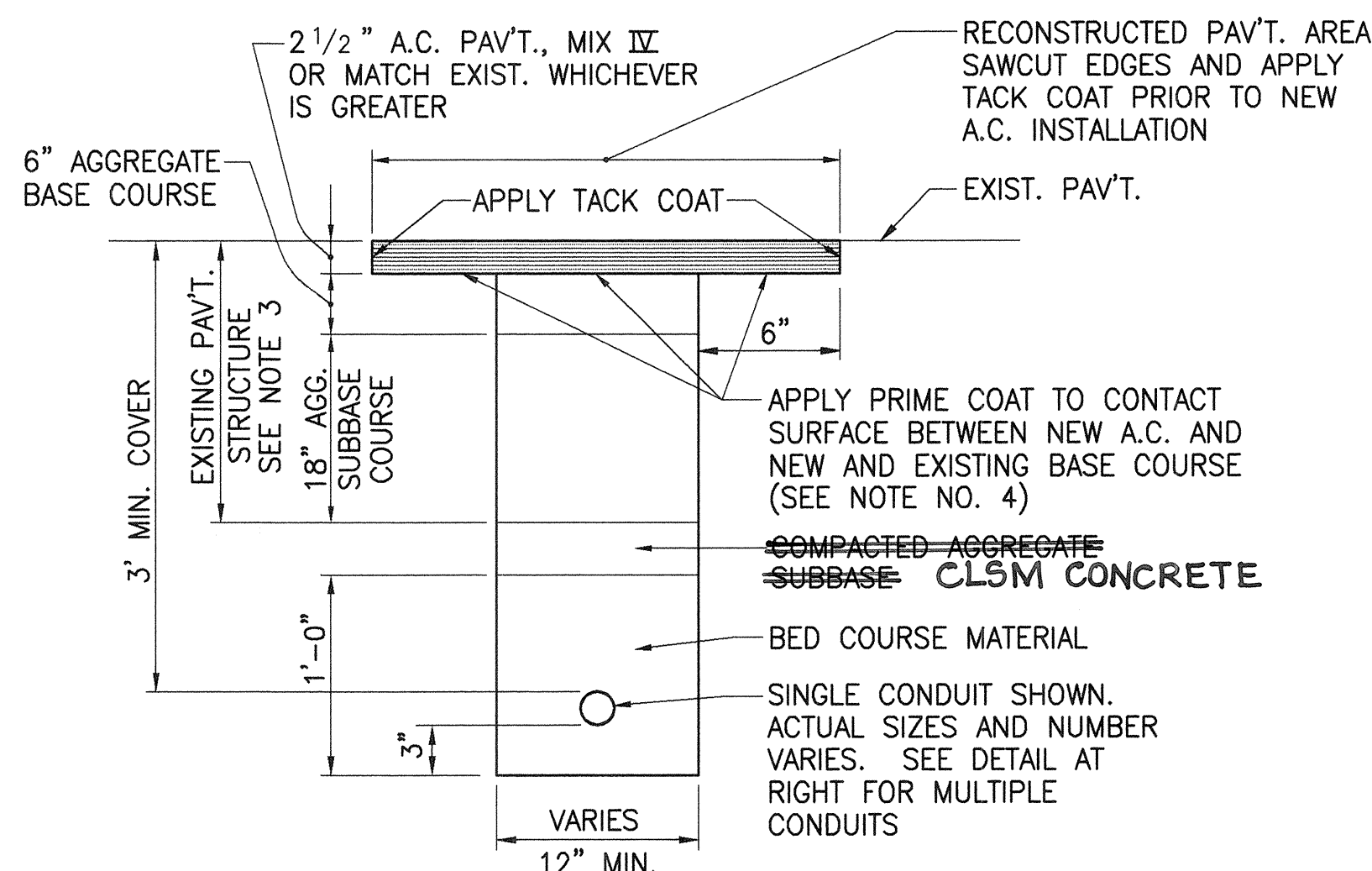
TYPE "D" PULLBOX & COVER

NOT TO SCALE



PULLBOX

- NOTE:**
- PROVIDE ARMORCAST POLYMER CONCRETE COVER.
 - INSTALL ON 6" BED OF #3 CRUSHED ROCK.
 - PROVIDE SUFFICIENT AMOUNT OF 5/8" x 8" COPPERWELD GROUND RODS AS DIRECTED BY THE TRAFFIC SIGNAL INSPECTOR/ENGINEER. COST SHALL BE INCIDENTAL TO THE VARIOUS TRAFFIC SIGNAL ITEMS.



TYPICAL TRENCH DETAIL IN PAVEMENT AREAS

NOT TO SCALE

NOTES:

- DETAIL FOR MULTIPLE CONDUIT TRENCHES SHALL BE SIMILAR. PROVIDE 3" MINIMUM CLEAR SPACING BETWEEN CONDUITS. SEE DETAIL AT RIGHT.
- BED COURSE MATERIAL SHALL BE BLACK SAND, BEACH SAND, CRUSHED ROCK OR FINELY GRADED CORAL PASSING A 1/2 INCH SIEVE.
- ASPHALTIC CONCRETE, BASE COURSE AND SUBBASE SHALL BE THE MINIMUM THICKNESS SHOWN OR EQUAL TO THE EXISTING WHICHEVER IS GREATER.
- FOR ROAD GRADES 0% TO 7.99% AND PRIME COAT IS NOT AVAILABLE, NONE REQUIRED. IF PRIME COAT IS AVAILABLE, USE PRIME COAT.

STATE OF HAWAII
DEPARTMENT OF TRANSPORTATION
HIGHWAYS DIVISION

TRAFFIC SIGNAL DETAILS

KUAKINI HIGHWAY
INSTALLATION OF TRAFFIC SIGNALS AT
SEA VIEW CIRCLE
FAP NO. STP-011-1(22)

SCALE: AS NOTED DATE: MARCH 1998

SHEET No. 1 OF 1 SHEETS