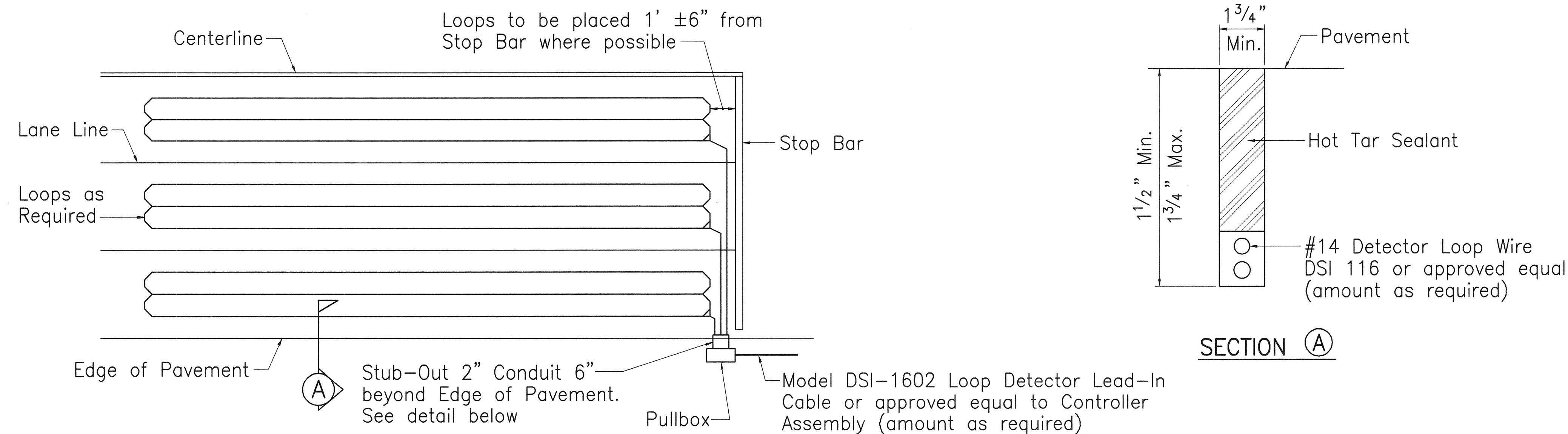
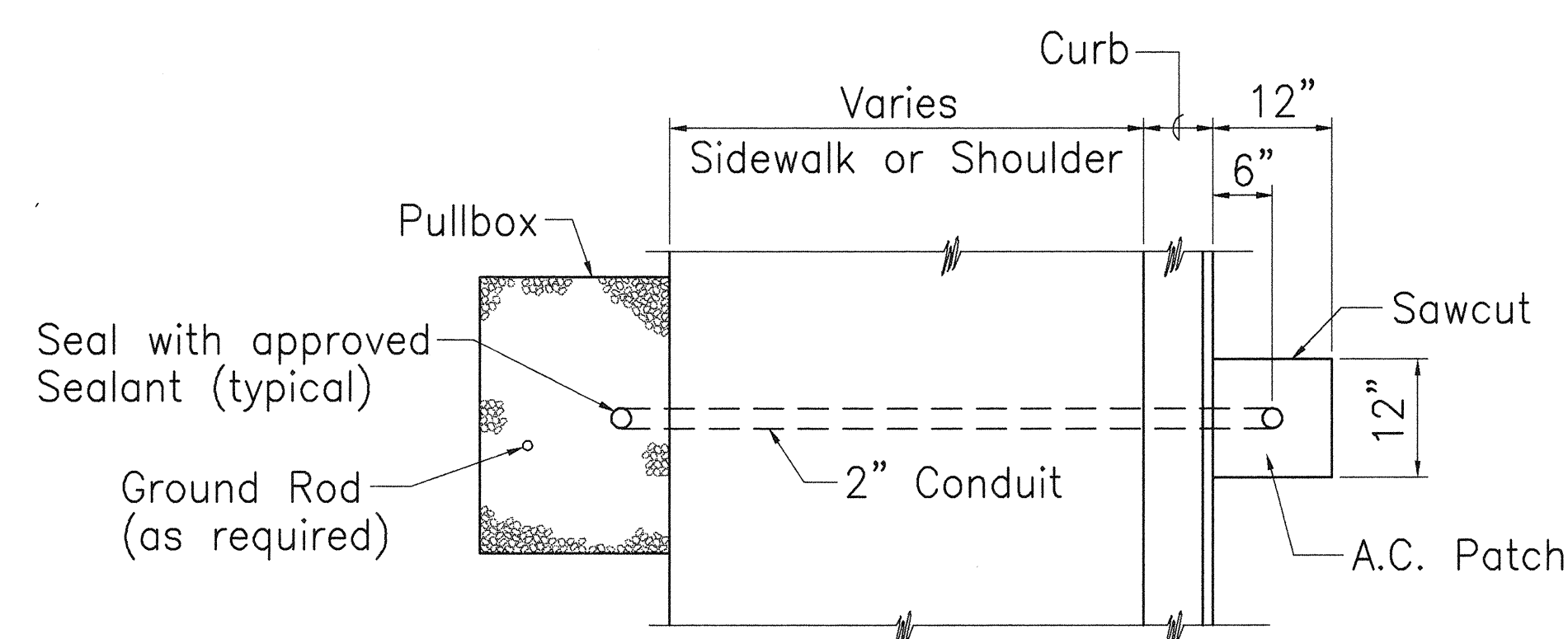


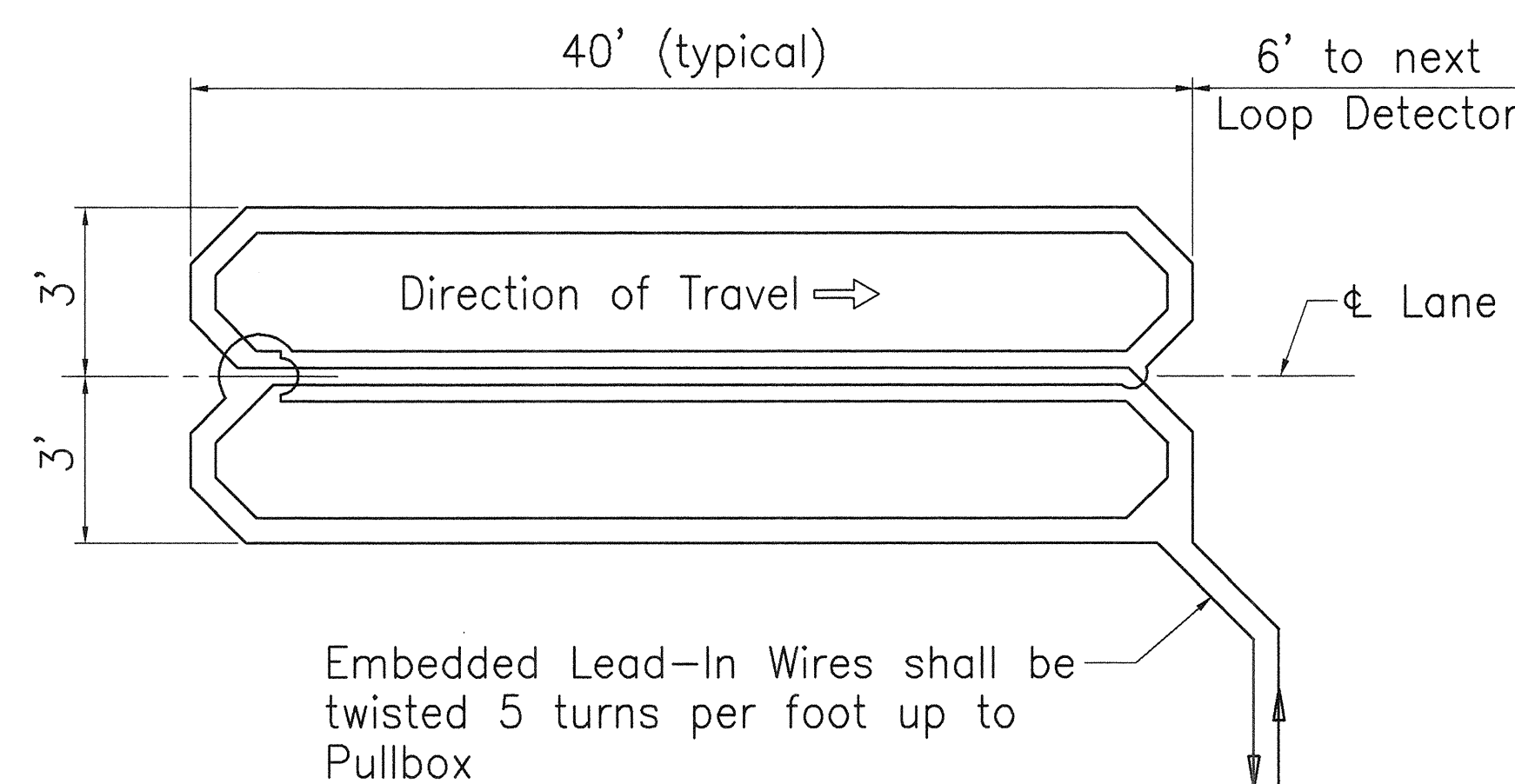
FED. ROAD DIST. NO.	STATE	FED. AID PROJ. NO.	FISCAL YEAR	SHEET NO.	TOTAL SHEETS
HAWAII	HAW.	STP-011-1(22)	1999	9	14



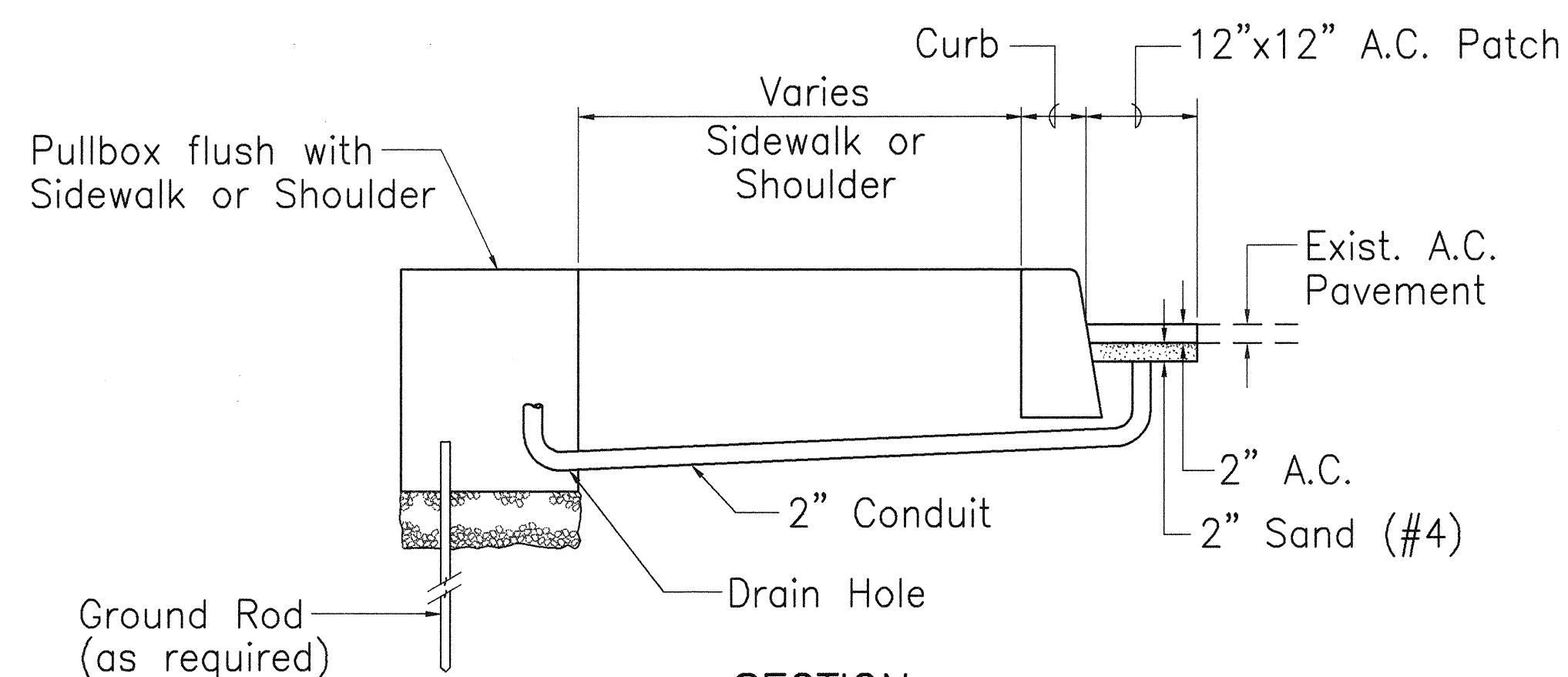
LOOP LAYOUT



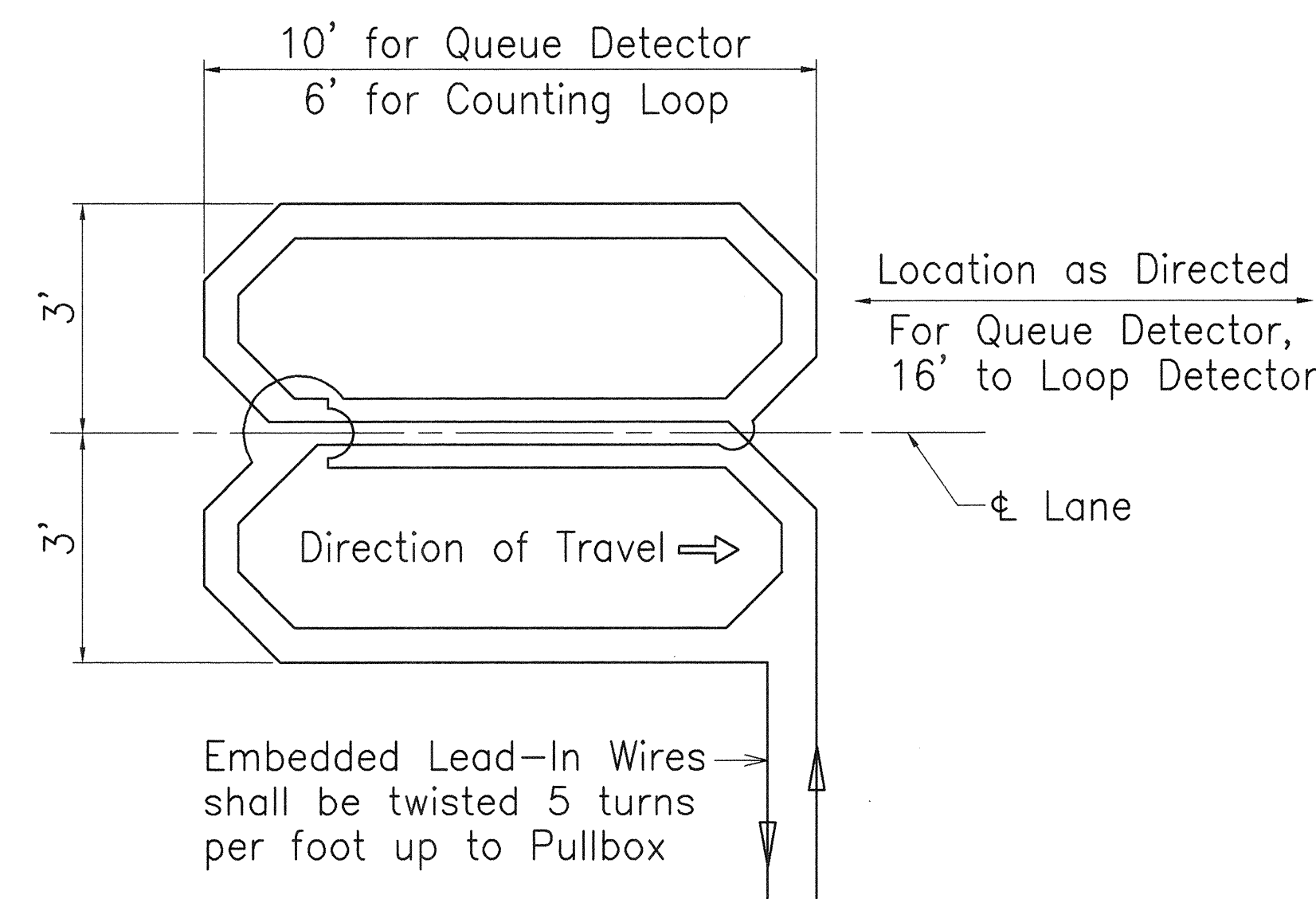
PLAN



WIRING DIAGRAM



LOOP DETECTOR STUB OUT



WIRING DIAGRAM - QUEUE/COUNTING DETECTORS

LOOP DETECTOR DETAILS

# NOTES

1. If abandoned in place, all existing loop detectors shall be saw cut completely through every 10' to prevent inductive coupling.
2. All loop detector lead in cables shall be identified in the cabinet with it's appropriate loop detector assignment number per plans.
3. When hot sealants are used, only polyester insulation with a minimum 400° melting point will be permitted.

STATE OF HAWAII  
DEPARTMENT OF TRANSPORTATION  
HIGHWAYS DIVISION

**LOOP DETECTOR DETAILS**

KUAKINI HIGHWAY  
INSTALLATION OF TRAFFIC SIGNALS AT  
SEA VIEW CIRCLE  
FAP NO. STP-011-1(22)

SCALE: AS NOTED DATE: MARCH 1998

SHEET No. 1 OF 1 SHEETS