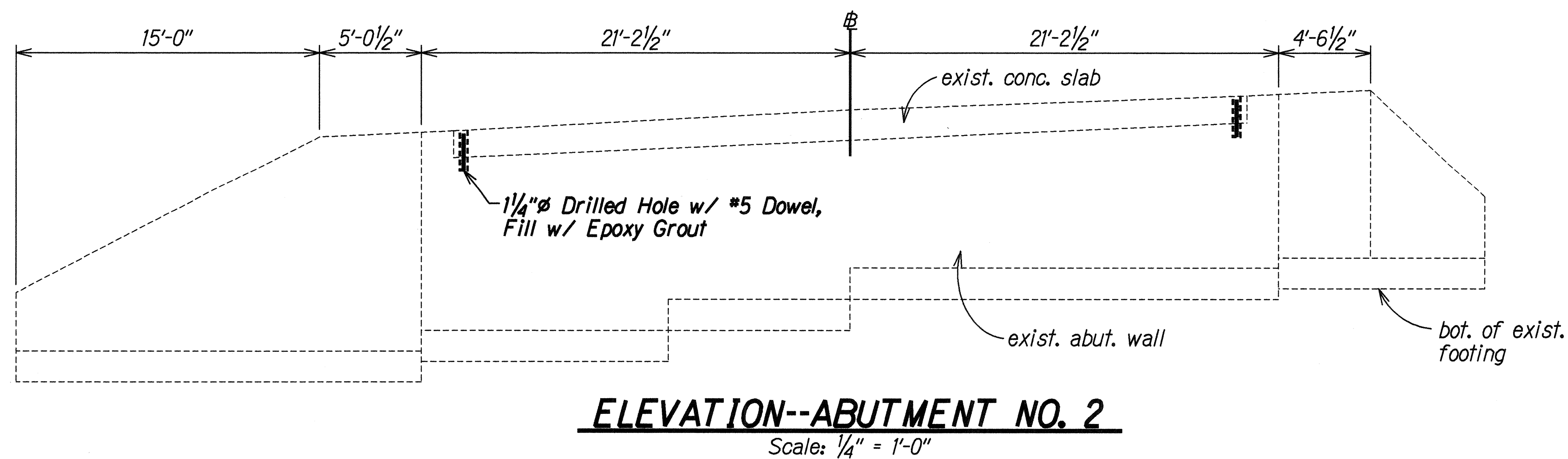
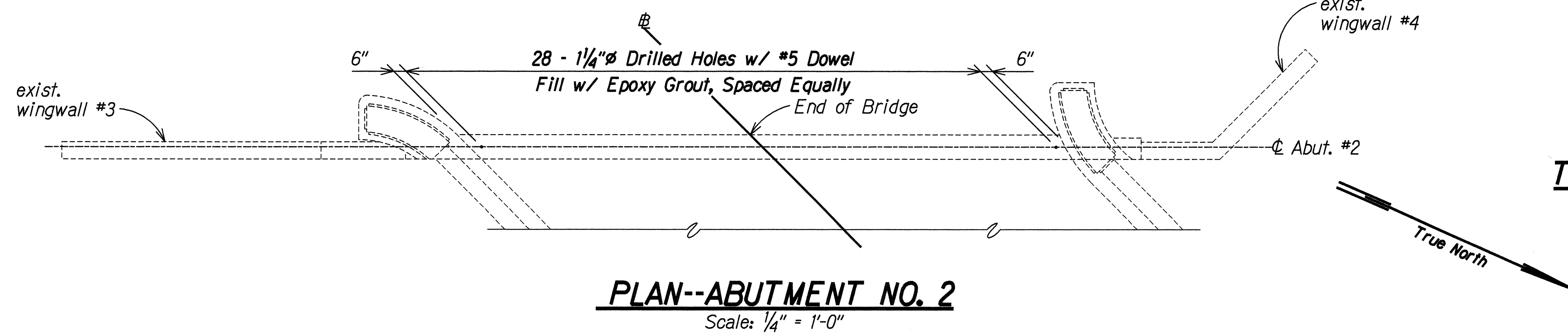
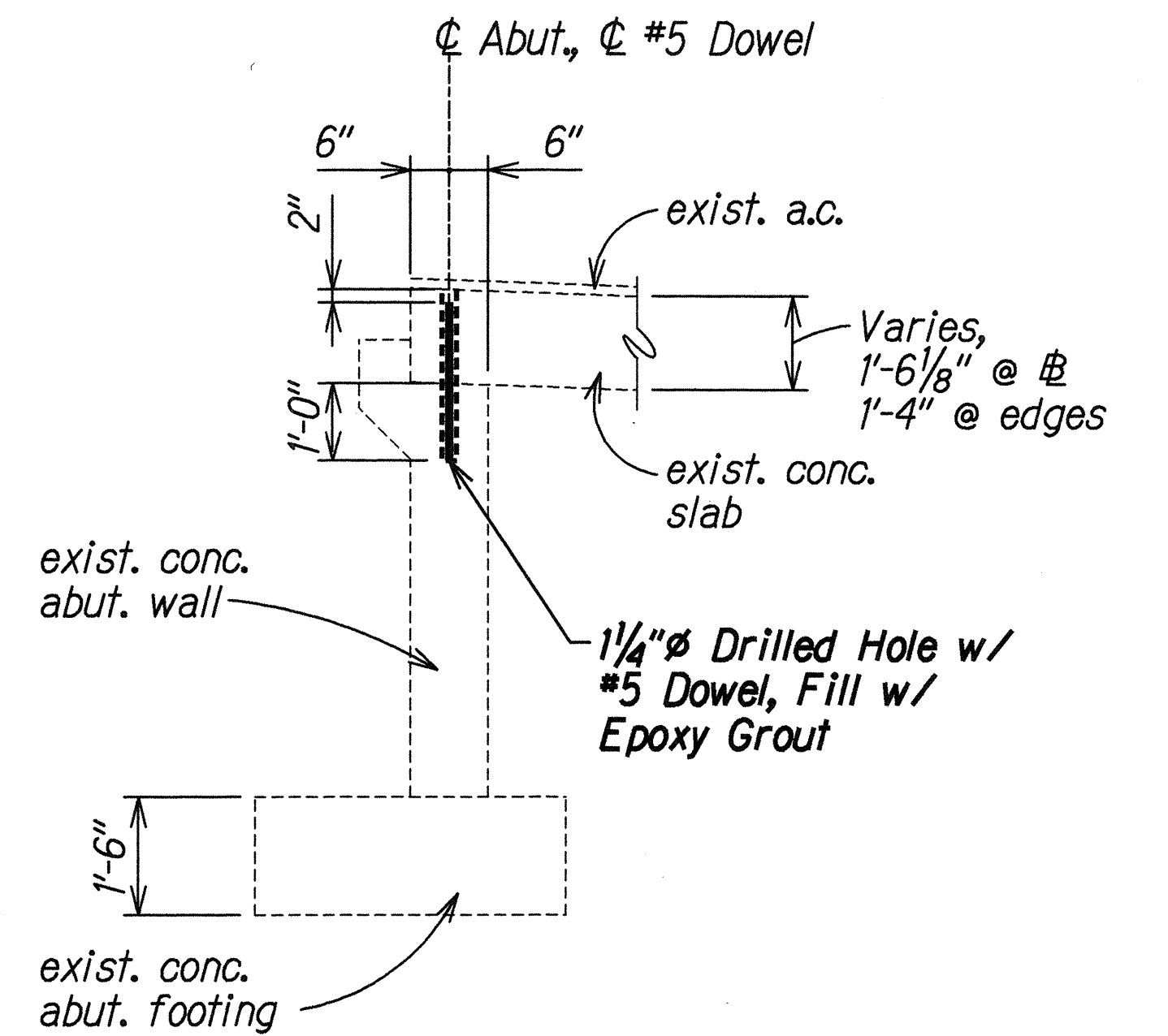
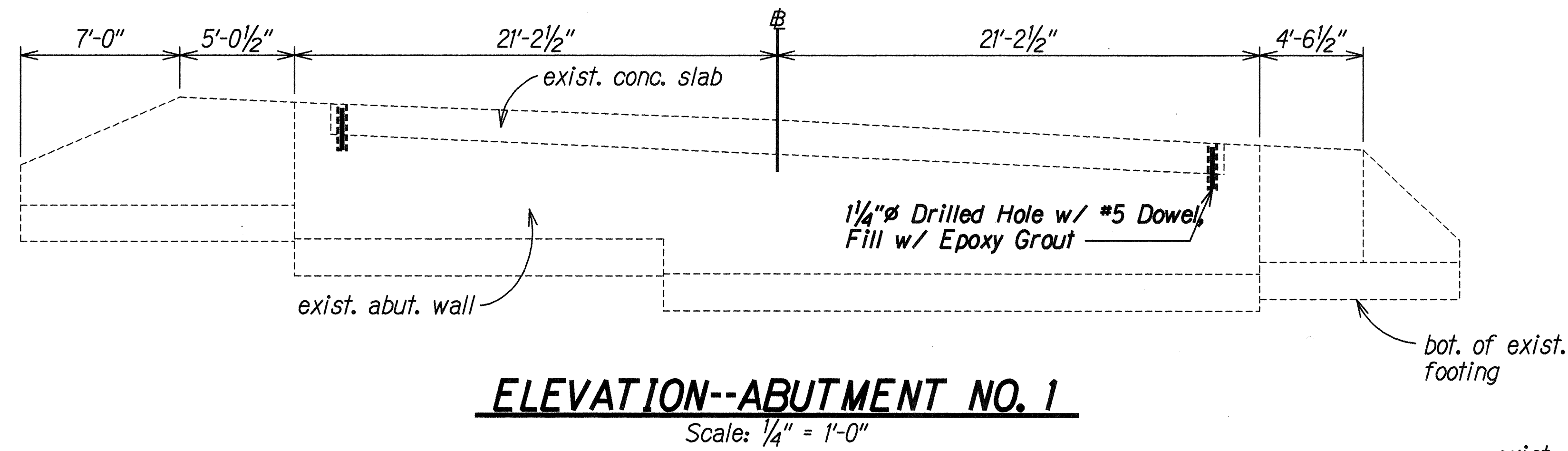
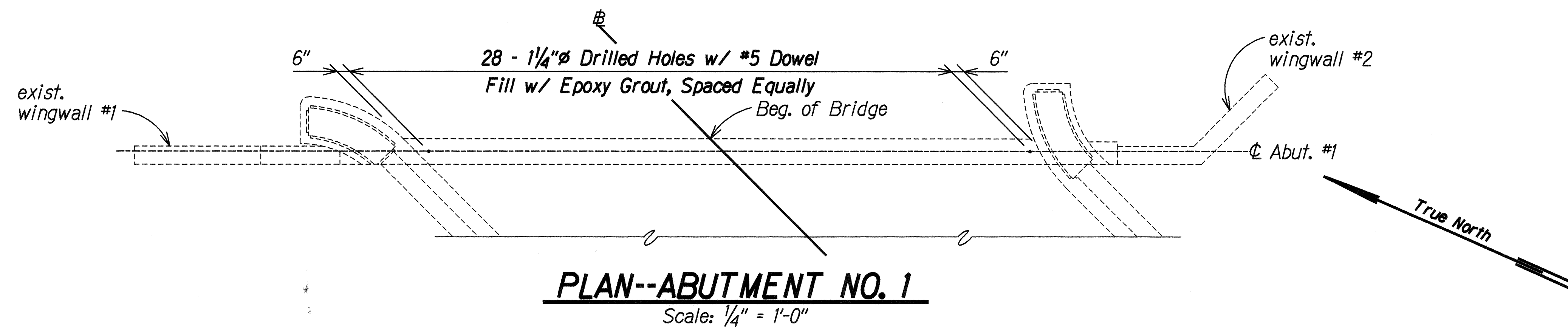


FED. ROAD DIST. NO.	STATE	FED. AID PROJ. NO.	FISCAL YEAR	SHEET NO.	TOTAL SHEETS
HAWAII	HAW.	BR-0100(58)	1998	11	16



DATE	BY
MAY 1997	JHG
MAY 1997	GRO
MAY 1997	GRO
MAY 1997	JHN



THIS WORK WAS PREPARED BY
ME OR UNDER MY SUPERVISION
SIGNATURE

STATE OF HAWAII
DEPARTMENT OF TRANSPORTATION
HIGHWAYS DIVISION
KEAIIWA BRIDGE
ABUTMENT NO. 1 AND NO. 2
RETROFIT DETAILS
SEISMIC RETROFIT OF VARIOUS BRIDGES
VICINITY OF PUNALUU
Fed. Aid Project No. BR-0100(58)
Scale: As Noted Date: Sept. 1997
SHEET No. 58 OF 16 SHEETS