

FED. ROAD DIST. NO.	STATE	FED. AID PROJ. NO.	FISCAL YEAR	SHEET NO.	TOTAL SHEETS
HAWAII	HAW.	NH-011-2(33)	1996	92	102

STRIPING LEGEND

4 each Type A Raised Pavement Markers
Type C Raised Pavement Markers @ 40' - 0" o.c.

4 each Type J Raised Pavement Markers
Type D Raised Pavement Markers @ 40' - 0" o.c.

4 Each Type J Raised Pavement Markers
Type D Raised Pavement Markers @ 40'-0" o.c.
Type H Raised Pavement Markers (Reflective
Surface facing no-passing direction)
4" Single Solid Yellow Stripe
(Tape Type I or Thermoplastic Extrusion)

4" Double Solid Yellow Centerline Stripes with
Type D Raised Pavement Markers @ 20' - 0" o.c.
(Tape Type I or Thermoplastic Extrusion)

4" Double Solid Yellow Transverse Median Stripes
with Type H Raised Pavement Markers @ 20' - 0"
o.c. (Tape, Type I or Thermoplastic Extrusion)

4" Double Yellow Guide Lines for Transverse Median
@ Private Driveways with Type H Raised Pavement
Markers @ 20'-0" o.c. (Tape, Type III or
Thermoplastic Extrusion)

Pavement Markers @ 40'-0" o.c.
(Tape Type II or Thermoplastic Extrusion)

8" White Channelizing Stripe with Type C Raised
Pavement Markers @ 20'-0" o.c. (Tape, Type I
or Thermoplastic Extrusion)

Transverse Median Diagonal Marking 12" Wide
@ 20'-0" o.c. (Tape, Type II or
Thermoplastic Extrusion)

Channelizing Island or Deceleration Lane Gore
(Tape Type II or Thermoplastic Extrusion)

4 Each Type A Raised Pavement Markers
10' wide (See Std. Plan TE-31)
Type C Raised Pavement Markers @ 20'-0" o.c.
4" Single Solid White Stripe
(Tape Type I or Thermoplastic Extrusion)

4" White Guide Lines, 2' Stripe with 4'-0" space
(Tape, Type III or Thermoplastic Extrusion)

4" White Edge Line Extension, 2' Stripe at 10'-0"
o.c. (Tape, Type III or Thermoplastic Extrusion)
with Type C Markers at 40'-0" o.c.

Pavement Arrow (Tape, Type III or Thermoplastic
Extrusion)

Pavement Word (Tape, Type III or Thermoplastic
Extrusion)

UTILITY LEGEND

New Power Pole & Street Light

Adjusted Traffic Signal Control Box

Adjusted Traffic Signal Manhole

Adjusted Storm Drain Manhole

Relocated Traffic Signal Pole

Adjusted Water Meter Box

Adjusted Water MH Frame/Cover

Adjusted Water Valve Box

New Fire Hydrant

New Water Valve Box

Adjusted Monument

Existing Fire Hydrant

Existing Water Valve Box

Existing Power Pole

Existing Traffic Signal Pole

Existing Power Pole & Street Light

REFLECTOR MARKER LEGEND

RM-2, Yellow Reflector Marker with Steel Post, unless otherwise noted.

RM-3, Yellow Reflector Marker with Steel Post, unless otherwise noted.

RM-4, Reflector Marker with Steel Post, unless otherwise noted.

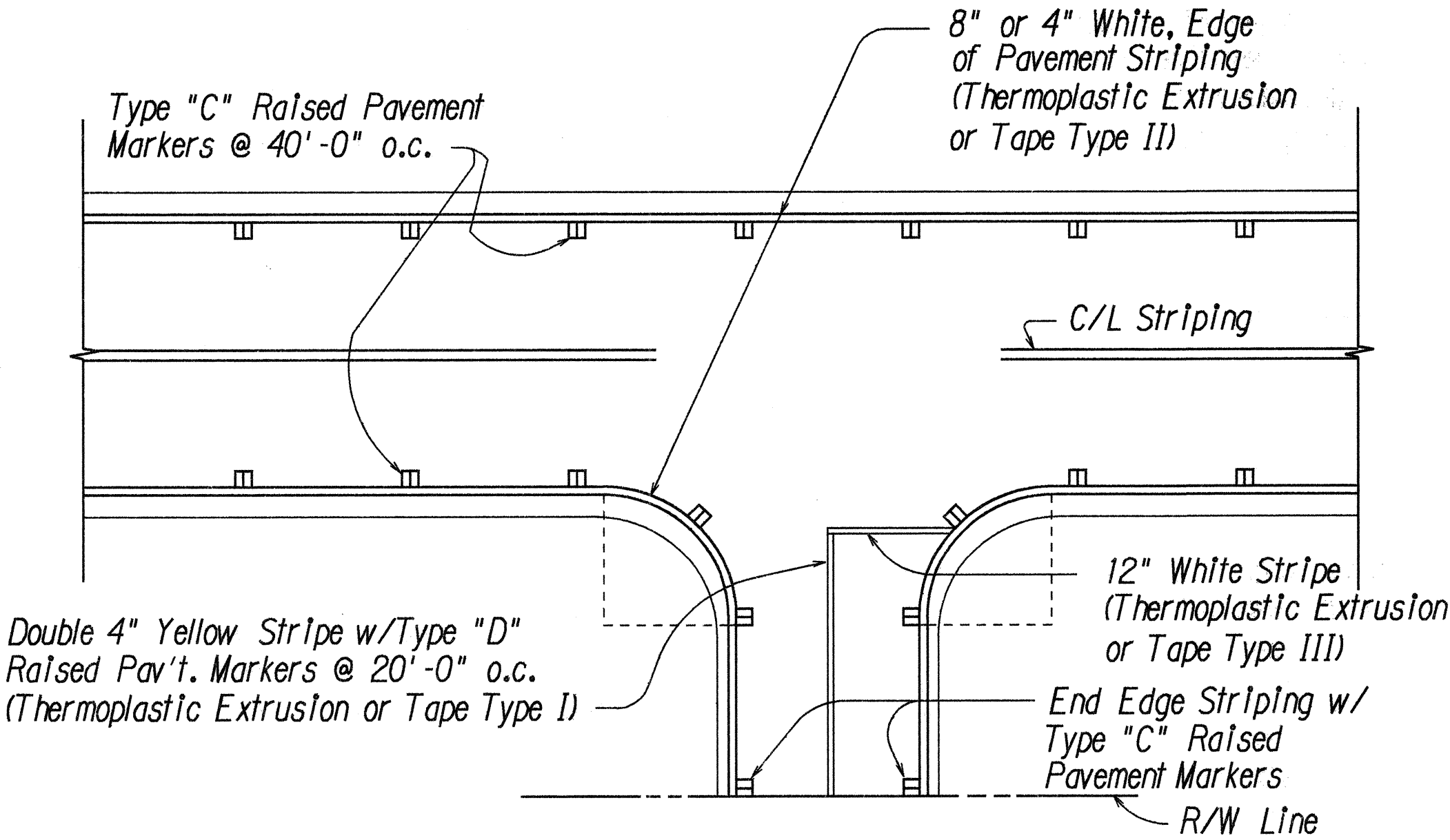
White reflector (yellow reflector when unlabeled)

Flex Post with Type "A" Installation (paved area).

Flex Post with Type "B" Installation (unpaved area).

BI-directional Installation on same post.

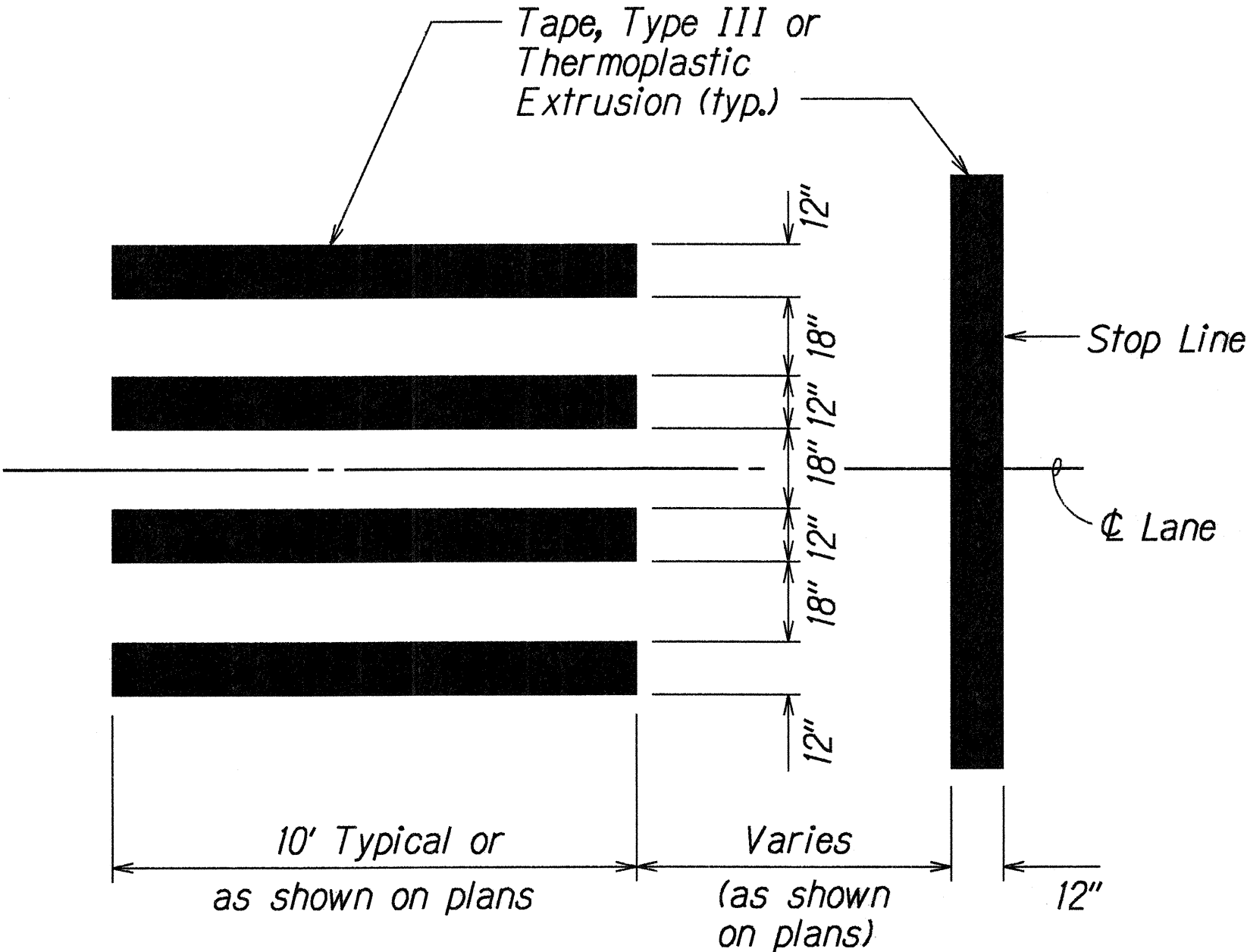
Without Post.



TYPICAL EDGE OF PAVEMENT MARKING
Not to Scale

NOTES

- Layout of pavement markings and striping shall be done by the Contractor and approved by the Engineer prior to any installation work.
- Existing pavement markings not incorporated in the final traffic pattern shall be removed as directed by the Engineer. Costs shall be incidental to the various pavement marking items.
- Raised pavement markers shall not be installed within crosswalks.
- Final locations of all Stop Lines shall be approved by the Engineer prior to installation.
- All pavement striping shall be as noted on the Legend or plans.
- All preformed pavement marking tapes over existing pavement shall be applied with an approved primer as recommended by the tape manufacturer and as approved by the Engineer. The primer shall be allowed to dry to the tacky stage prior to tape application.
- Contractor shall obtain blue raised pavement markers from County of Hawaii Fire Department and install them at the direction of the Engineer. The cost of installing the markers shall be incidental to other contract items.



Crosswalk Striping Detail
Scale: Not To Scale

STATE OF HAWAII

DEPARTMENT OF TRANSPORTATION

HIGHWAYS DIVISION

PAVEMENT MARKING

LEGEND AND NOTES

KANOELEHUA AVENUE RESURFACING

F. A. PROJECT NO. NH-011-2(33)

Scale: None

Date: April, 1996

SHEET No. 1 OF 1 SHEETS

DESIGNED BY

DATE

TRACED BY

DATE

NOTED BY

DATE

QUANTITIES BY

DATE