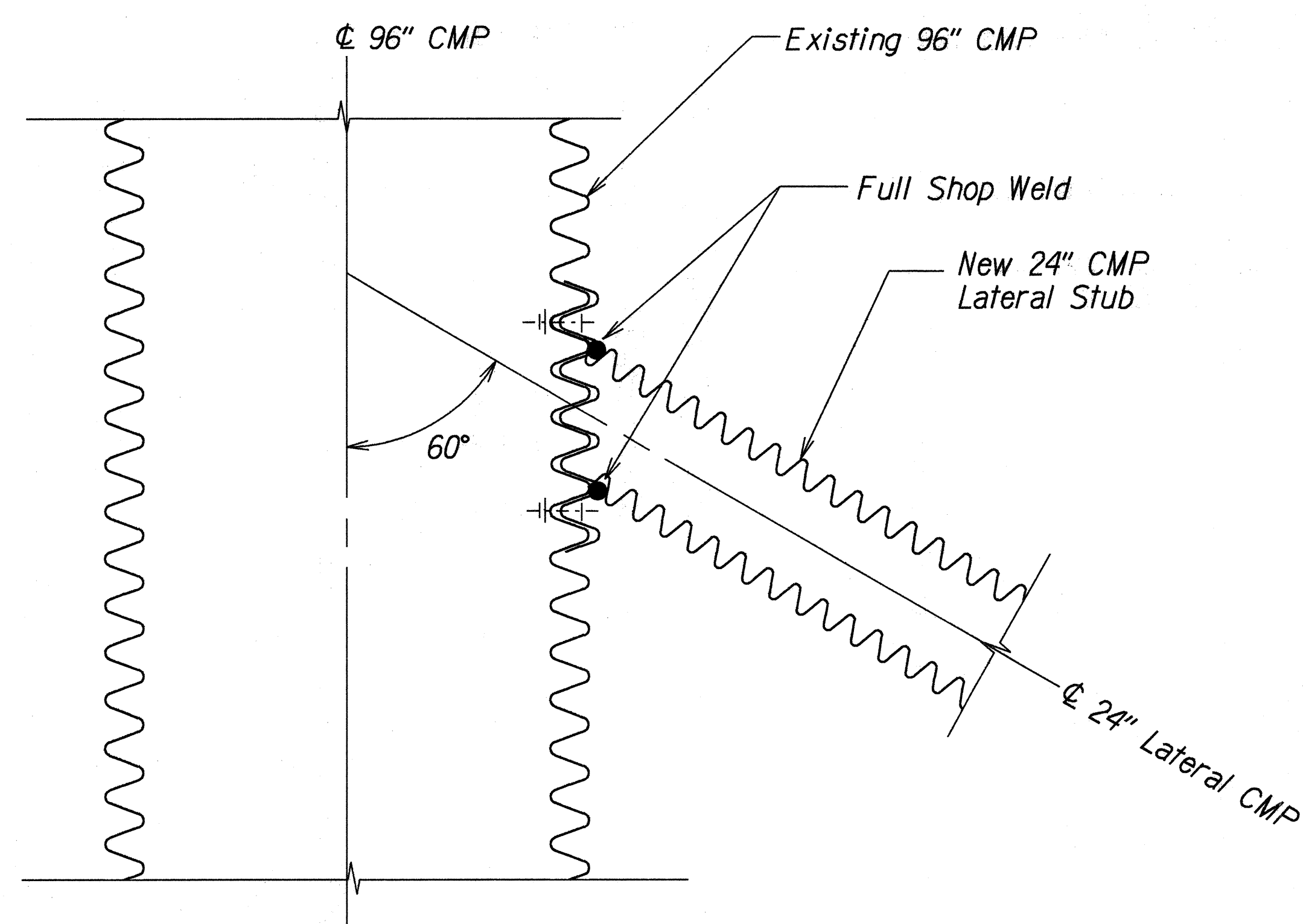


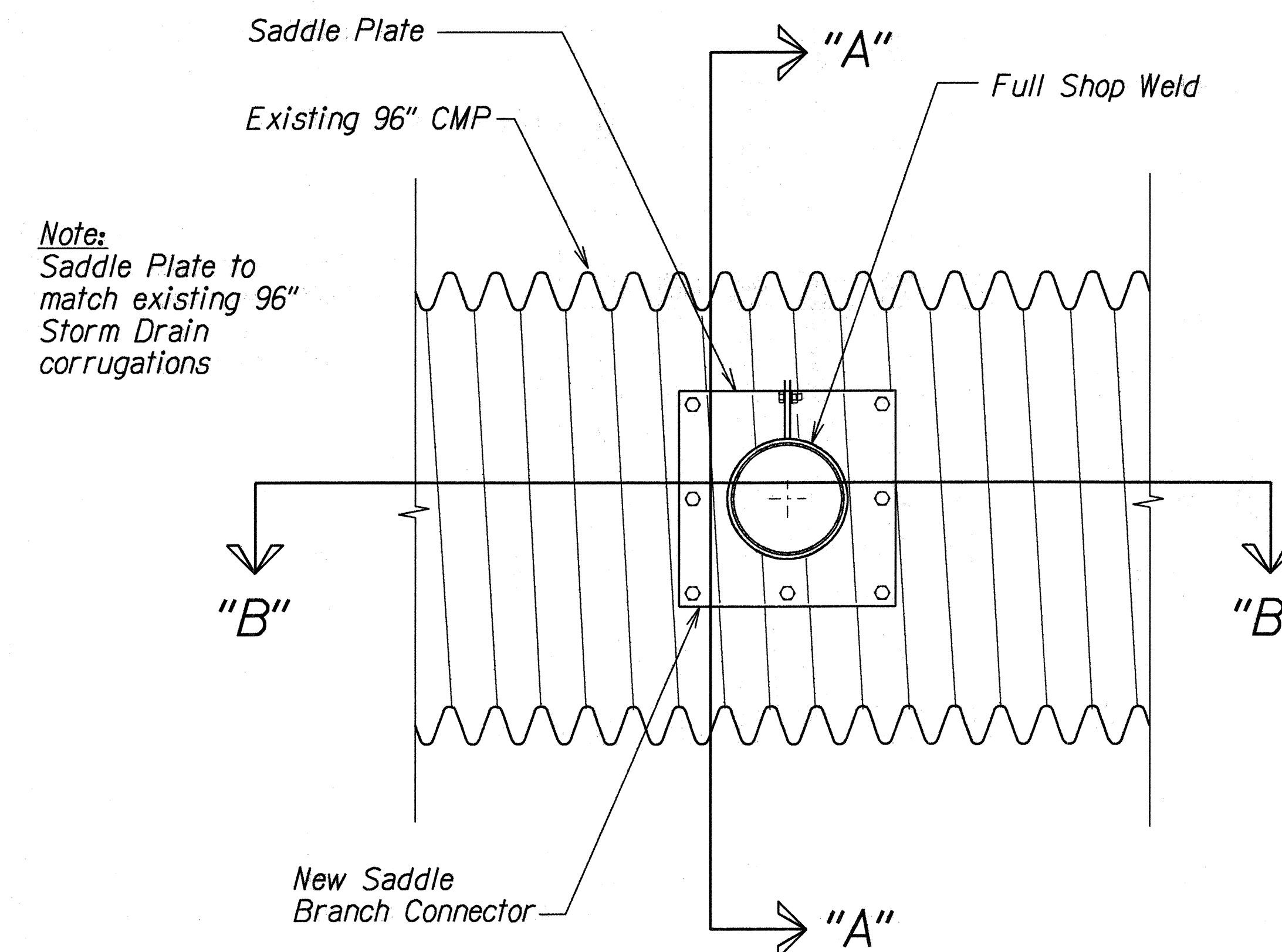
FED. ROAD DIST. NO.	STATE	FED. AID PROJ. NO.	FISCAL YEAR	SHEET NO.	TOTAL SHEETS
HAWAII	HAW.	NH-011-2(33)	1996	35	102



Plan View of Lateral 96 inch S.D.

SECTION "B-B"

Scale: N.T.S.



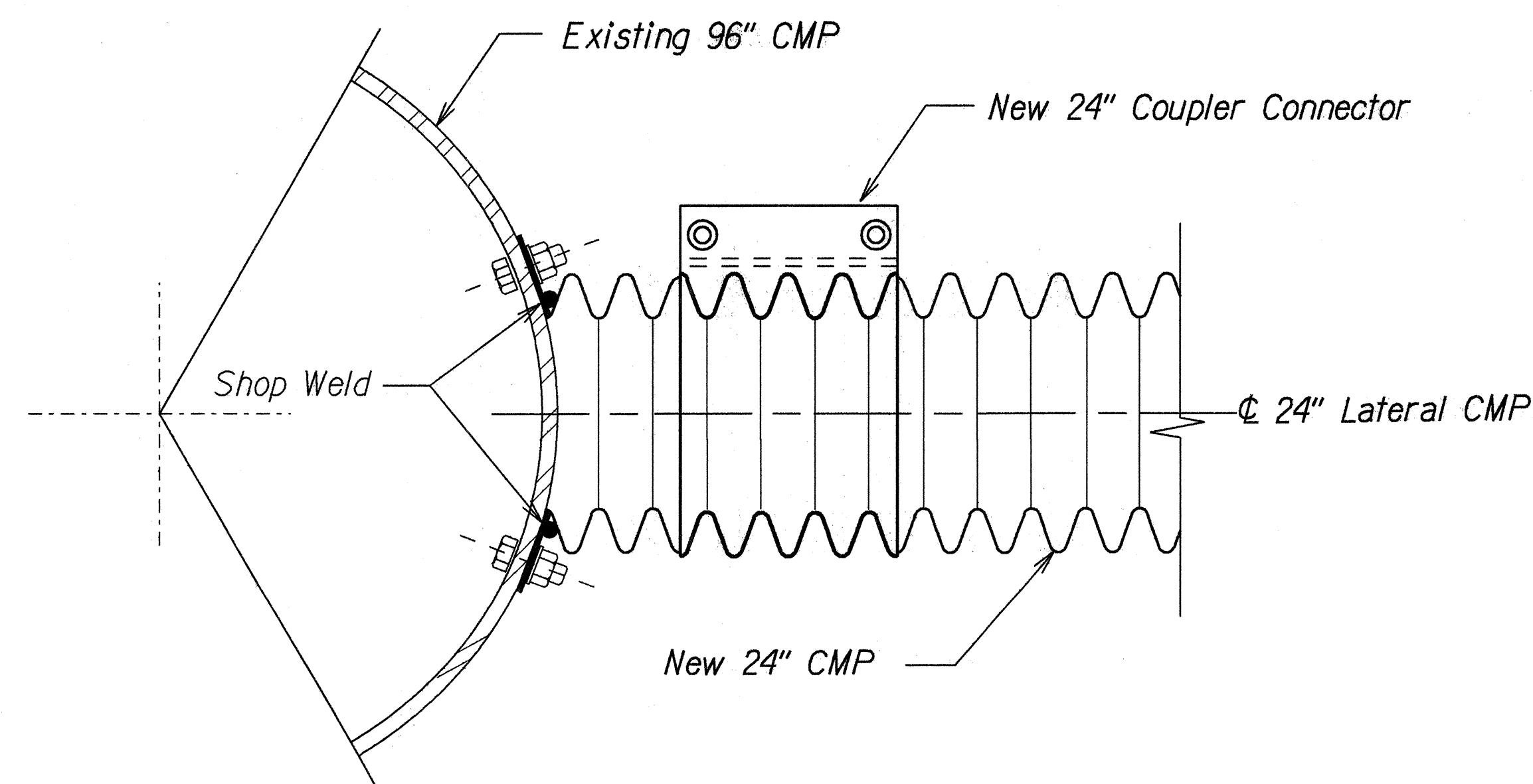
Connection 24 inch CMP Lateral to 96 inch main line S.D.

ELEVATION

Scale: N.T.S.

Notes:

1. Saddle Branch connector details provided by Jorgenson Steel Company on Oahu.
2. Connection of 24 inch CMP lateral to the 96 inch CMP storm drain shall be as shown or approved equivalent. The Geometry and locations shown remain similar.
3. The 24 inch CMP lateral stub shall be fully shop welded to the 96 inch CMP saddle plate. This portion of the assembly shall be galvanized prior to field delivery.
4. After matching saddle plate and stub to the existing 96 inch CMP storm drain, and drilling and cutting operations are complete, the entire saddle assembly and the drilled and cut portions of the pipes and saddle plate shall be galvanized prior to installation.
5. The stub shall be connected to the 24 inch CMP lateral with an approved coupler.
6. All work necessary for the complete installation shall be considered as incidental to Item No. 604.5320, Type D-1 Drop Inlet, 5.0 to 7.9 feet.



SECTION "A-A"

Scale: N.T.S.

ORIGINAL PLAN	DATE
SURVEY DATED BY	
DRAWN BY	
DESIGNED BY	
CHECKED BY	
NOTED BY	
DATE	
BY	

STATE OF HAWAII
DEPARTMENT OF TRANSPORTATION
HIGHWAYS DIVISION

**CATCH BASIN TYPE-DI
SADDLE BRANCH DETAIL**

KANOELEHUA AVENUE RESURFACING
KEAAU TO KAMEHAMEHA AVENUE
F.A. PROJECT NO. NH-011-2(33)

Scale: As Shown Date: April, 1996

SHEET No. 1 OF 1 SHEETS