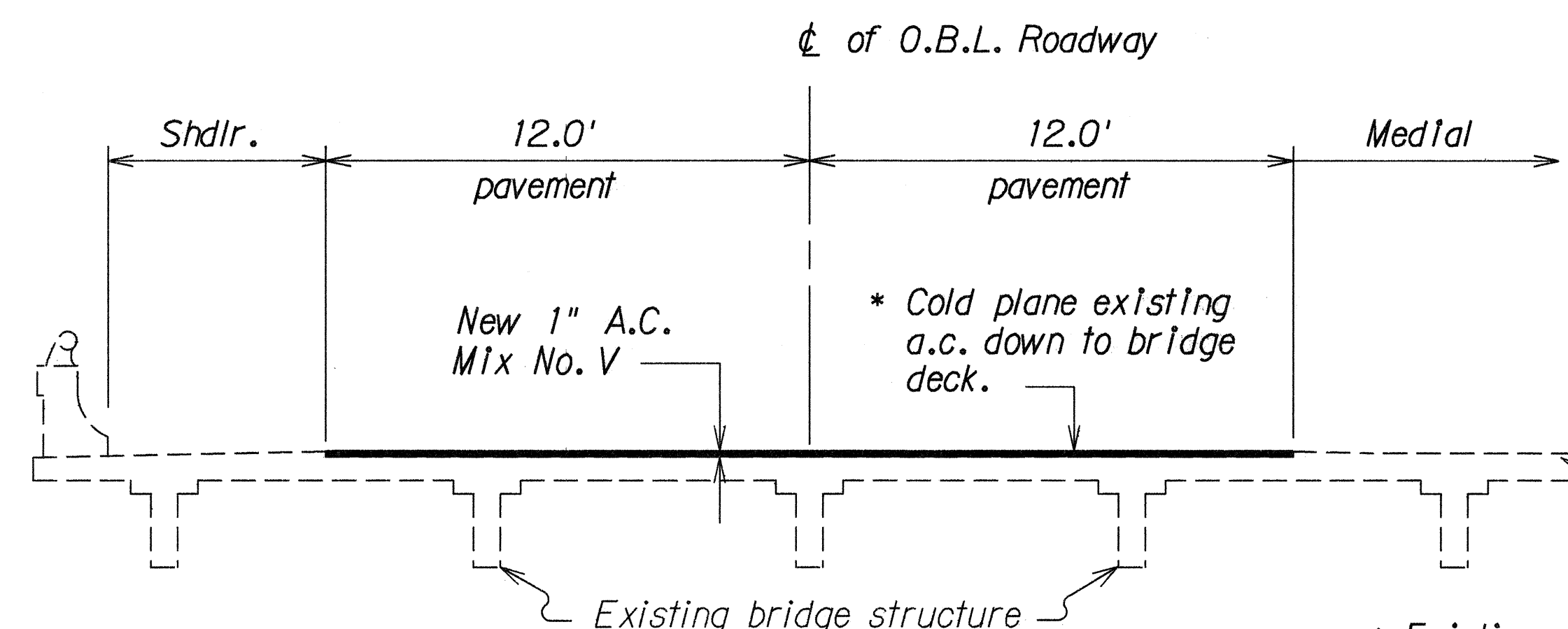
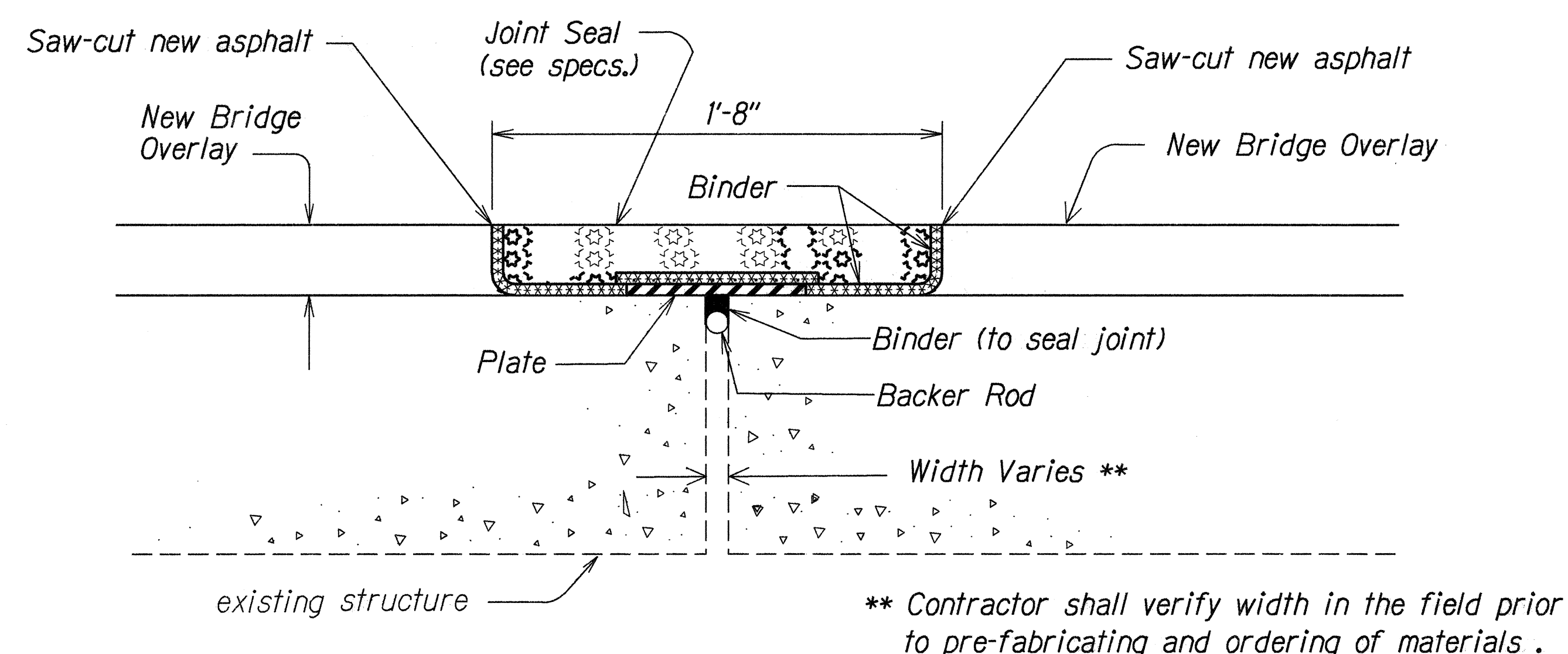


FED. ROAD DIST. NO.	STATE	FED. AID PROJ. NO.	FISCAL YEAR	SHEET NO.	TOTAL SHEETS
HAWAII	HAW.	NH-011-2(33)	1996	64	102

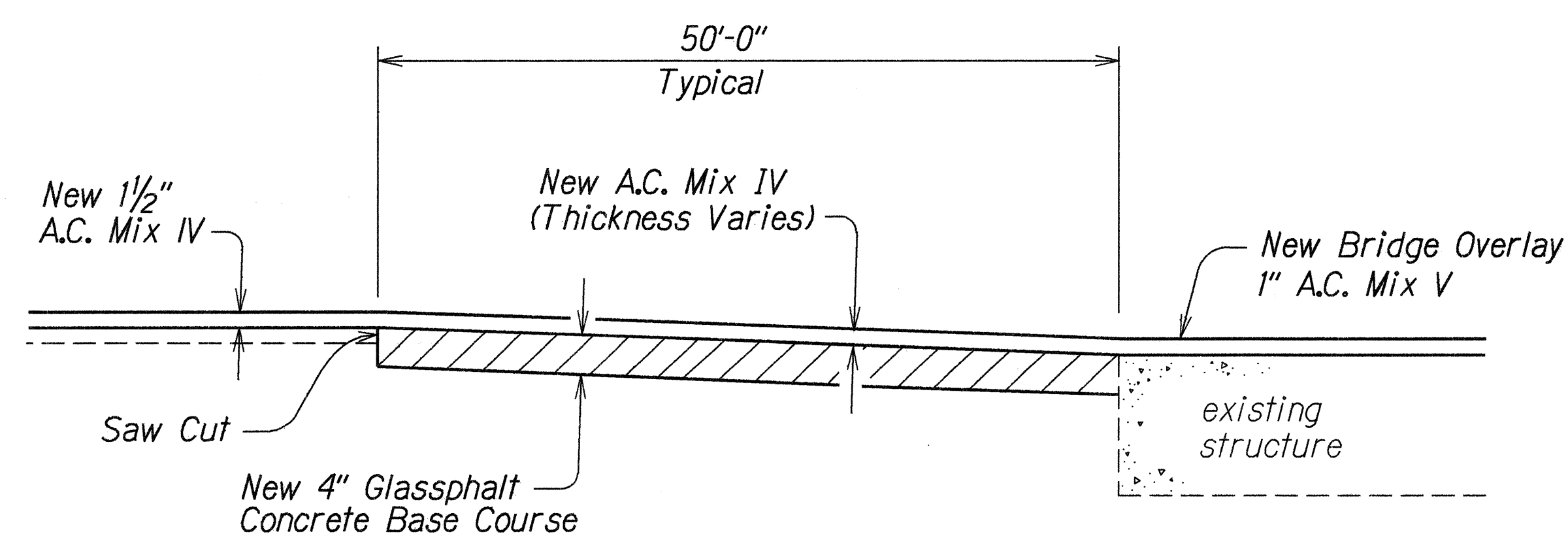


**PARTIAL SECTION THRU BRIDGE DECK**  
Not To Scale

\* Existing a.c. thickness 2". Contractor to verify in field. Payment for overlay removal shall be by square yard of bridge deck area. Approximate area 290 sq. yds.



**EXPANSION JOINT DETAIL AT BRIDGE DECK**  
Not to Scale



**RECONSTRUCTION DETAIL - PANAWEA BRIDGE APPROACHES - OUTBOUND LANES**  
Not to Scale

**BRIDGE JOINT NOTES:**

1. Expansion Joints (Travel Way)
  - a. Expansion joint length = 24' each  
Number of expansion joints = 2
  - b. Payment for expansion joint work shall be paid for under Item No. 520.0100 - Repair to Bridge Deck Joints - Panaewa Bridge.
2. Joint Sealing (Sidewalk, Medial)
  - a. Length of joint = 10+15 = 25'  
Number of expansion joints = 2  
Total length of joint sealing = 50'
  - b. Joint sealing work shall be considered incidental to Item No. 520.0100.

STATE OF HAWAII  
DEPARTMENT OF TRANSPORTATION  
HIGHWAYS DIVISION  
**BRIDGE WORK & PAVING**  
**DETAILS (OBL)**  
KAOELEHUA AVENUE RESURFACING  
PANAWEA BRIDGE TO PUAINAKO ST.  
F.A. PROJECT NO. NH-011-2(33)  
Scale: As Shown Date: April, 1996

SHEET No. 1 OF 1 SHEETS