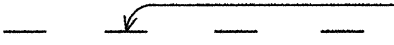
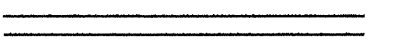



LEGEND




4 each Type J Raised Pavement Markers and Type D Raised Pavement Markers @ 40'- 0" o.c.




4" Double Solid Yellow with Type D Raised Pavement Markers @ 20'- 0" o.c. (Thermoplastic Extrusion)



Lane Change Restriction Marking  
4 each Type A Raised Pavement Markers and Type C Raised Pavement Markers @ 20'- 0" o.c.  
4" White Stripe (Thermoplastic Extrusion )



Transverse Shoulder Marking (Thermoplastic Extrusion)



Crosswalk and Stop Line. All Stop Lines shall be 10'- 0" from Crosswalk unless otherwise noted.

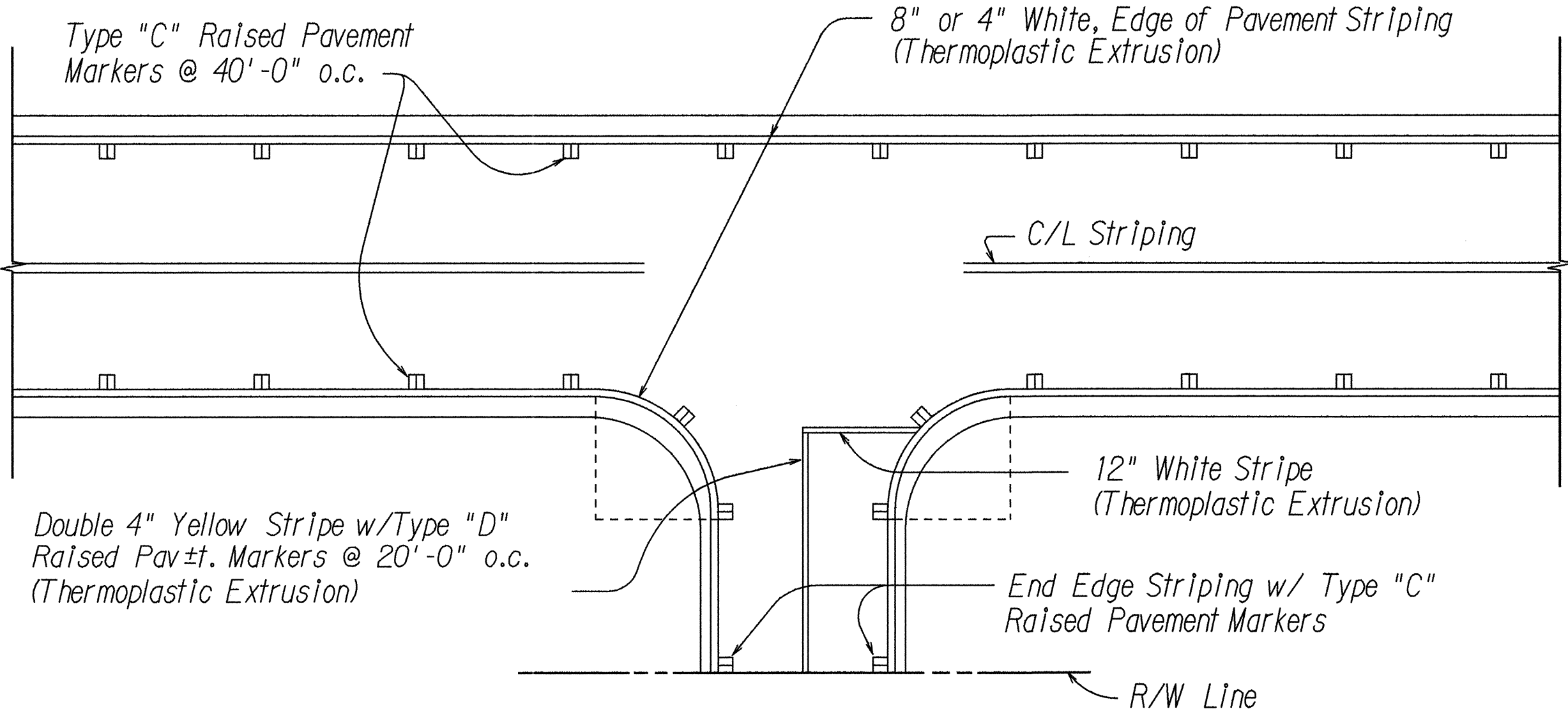
NOTES

- Layout of pavement markings and striping shall be done by the Contractor and approved by the Engineer prior to any Installation work.
- Existing pavement markings not incorporated in the final traffic pattern shall be removed as directed by the Engineer. Costs shall be incidental to the various pavement marking items.
- Raised pavement markers shall not be installed within crosswalks.
- Final locations of all signs shall be approved by the Engineer prior to any installation work.
- Existing signs not shown on these plans shall remain as posted unless otherwise directed by the Engineer. Removal and disposal of existing signs and/or posts as designated on these plans shall be incidental to the various signing items.
- Final locations of all Stop Lines shall be approved by the Engineer prior to Installation.
- All pavement striping shall be as noted on the Legend or plans.
- All permanent pavement striping shall be Thermoplastic Extrusion .
- Contractor shall obtain blue raised pavement markers from County of Hawaii Fire Department and install them at the direction of the Engineer. The cost of installing the markers shall be incidental to other Contract Items.

FED. ROAD DIST. NO.	STATE	FED. AID PROJ. NO.	FISCAL YEAR	SHEET NO.	TOTAL SHEETS
HAWAII	HAW.	STP-011-2(29)	1994	16	20

PAVEMENT MARKING SUMMARY

DESCRIPTION	QUANTITY
<u>STRIPING</u>	
THERMOPLASTIC EXTRUSION	
DOUBLE 4-INCH PAVEMENT STRIPE (YELLOW).....	10,900 L.F.
4-INCH PAVEMENT STRIPE (WHITE) .....	64,200 L.F.
4-INCH PAVEMENT STRIPE (YELLOW) .....	9,700 L.F.
8-INCH PAVEMENT STRIPE (WHITE) .....	6,750 L.F.
12-INCH PAVEMENT STRIPE (WHITE) .....	1,050 L.F.
CROSSWALK MARKINGS .....	6 LANES
<u>MARKERS</u>	
TYPE	
C .....	1,980 EACH
D .....	1,250 EACH
H .....	280 EACH
J .....	2,600 EACH



TYPICAL EDGE OF PAVEMENT MARKING  
Not to Scale

SURVEY PLOTTED BY	DATE
DRAWN BY	
DESIGNED BY	
CHECKED BY	
NOTED BY	
DATE	

STATE OF HAWAII  
DEPARTMENT OF TRANSPORTATION  
HIGHWAYS DIVISION

PAVEMENT MARKING  
LEGEND, DETAILS & NOTES

VOLCANO ROAD RESURFACING  
MOUNTAIN VIEW TO KURTISTOWN  
F.A. PROJECT NO. STP-011-2(29)

Scale: As ShownDate: March, 1994

SHEET No. 1 OF 1 SHEETS