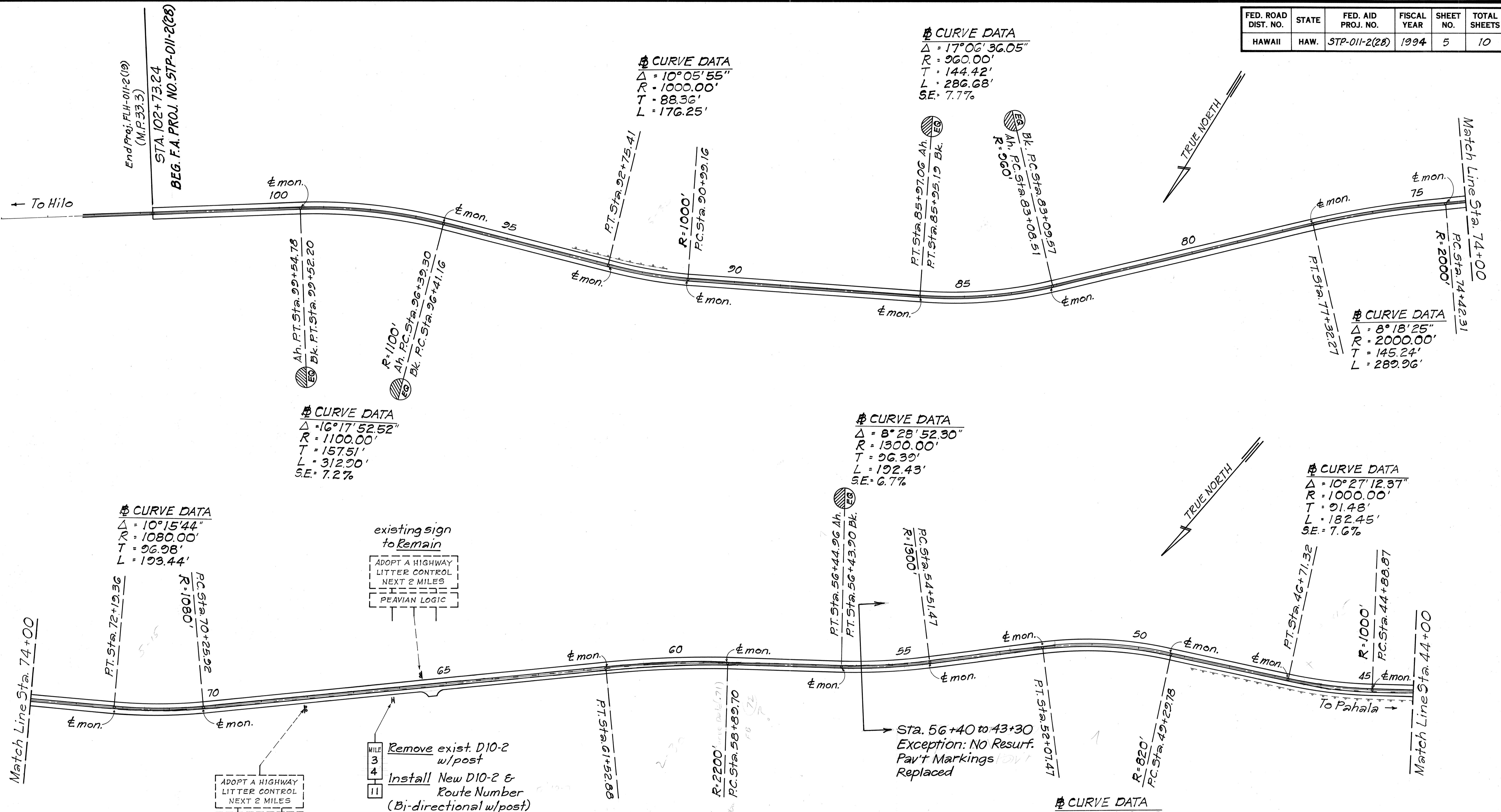


FED. ROAD DIST. NO.	STATE	FED. AID PROJ. NO.	FISCAL YEAR	SHEET NO.	TOTAL SHEETS
HAWAII	HAW.	STP-011-2(28)	1994	5	10



DATE	
SURVEY PLOTTED BY	
DRAWN BY	
DESIGNED BY	
CHECKED BY	
ORIGINAL PLAN	
NOTE BOOK	
NO. 1392	

**CURVE DATA**  
 $\Delta = 10^{\circ}15'44''$   
 $R = 1080.00'$   
 $T = 96.98'$   
 $L = 193.44'$

**CURVE DATA**  
 $\Delta = 16^{\circ}17'52.52''$   
 $R = 1100.00'$   
 $T = 157.51'$   
 $L = 312.90'$   
 $SE = 7.2\%$

**CURVE DATA**  
 $\Delta = 6^{\circ}51'14''$   
 $R = 2200.00'$   
 $T = 131.75'$   
 $L = 263.02'$

**CURVE DATA**  
 $\Delta = 10^{\circ}05'55''$   
 $R = 1000.00'$   
 $T = 88.36'$   
 $L = 176.25'$

**CURVE DATA**  
 $\Delta = 8^{\circ}28'52.30''$   
 $R = 1300.00'$   
 $T = 96.39'$   
 $L = 192.43'$   
 $SE = 6.7\%$

**CURVE DATA**  
 $\Delta = 17^{\circ}06'36.05''$   
 $R = 960.00'$   
 $T = 144.42'$   
 $L = 286.68'$   
 $SE = 7.7\%$

**CURVE DATA**  
 $\Delta = 10^{\circ}27'12.37''$   
 $R = 1000.00'$   
 $T = 91.48'$   
 $L = 182.45'$   
 $SE = 7.6\%$

**CURVE DATA**  
 $\Delta = 19^{\circ}24'09.65''$   
 $R = 820.00'$   
 $T = 141.51'$   
 $L = 280.25'$   
 $SE = 8.0\%$

STATE OF HAWAII  
DEPARTMENT OF TRANSPORTATION  
HIGHWAYS DIVISION

**PLAN**  
**ROADWAY STRIPING & SIGNS**  
MAMALAHOA HIGHWAY RESURFACING  
HAWAII VOLCANOES NATIONAL PARK  
F.A. PROJECT NO. STP-011-2(28)  
Scale: 1"=100' Date: May, 1994  
SHEET No. 1 OF 4 SHEETS

6/8/94 Revised Milepost Marker  
DATE REVISION

"AS-BUILT"

ADD. 5

FED. ROAD DIST. NO.	STATE	FED. AID PROJ. NO.	FISCAL YEAR	SHEET NO.	TOTAL SHEETS
HAWAII	HAW.	STP-011-2(28)	1994	6	10

Exception:  
Sta. 43+30  
to 56+50

exist. elevation  
sign to Remain

**§ CURVE DATA**

$\Delta = 5^{\circ}22'41''$   
 $R = 2400.00'$   
 $T = 112.72'$   
 $L = 225.27'$

**§ CURVE DATA**

$\Delta = 20^{\circ}45'18''$   
 $R = 1400.00'$   
 $T = 256.38'$   
 $L = 507.14'$

**§ CURVE DATA**

$\Delta = 13^{\circ}04'27''$   
 $R = 960.00'$   
 $T = 161.29'$   
 $L = 319.59'$

**§ CURVE DATA**

$\Delta = 6^{\circ}07'00''$   
 $R = 3000.00'$   
 $T = 160.28'$   
 $L = 320.64'$

**§ CURVE DATA**

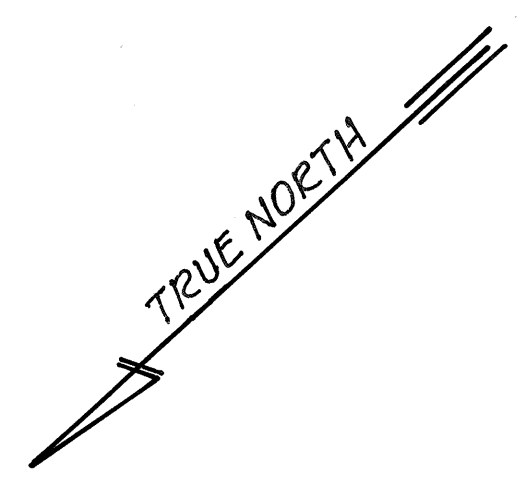
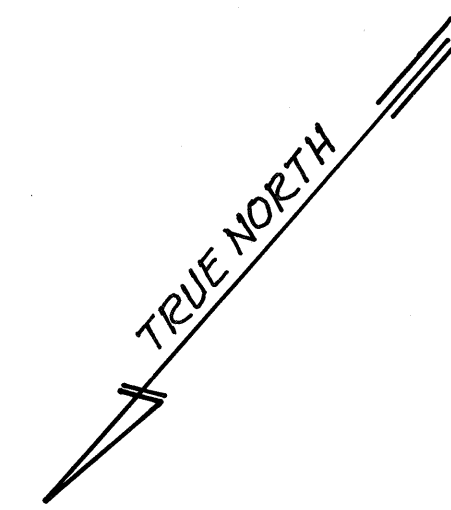
$\Delta = 2^{\circ}47'06''$   
 $R = 8165.00'$   
 $T = 198.47'$   
 $L = 396.86'$

**§ CURVE DATA**

$\Delta = 12^{\circ}15'07''$   
 $R = 1845.00'$   
 $T = 198.02'$   
 $L = 394.53'$

**§ CURVE DATA**

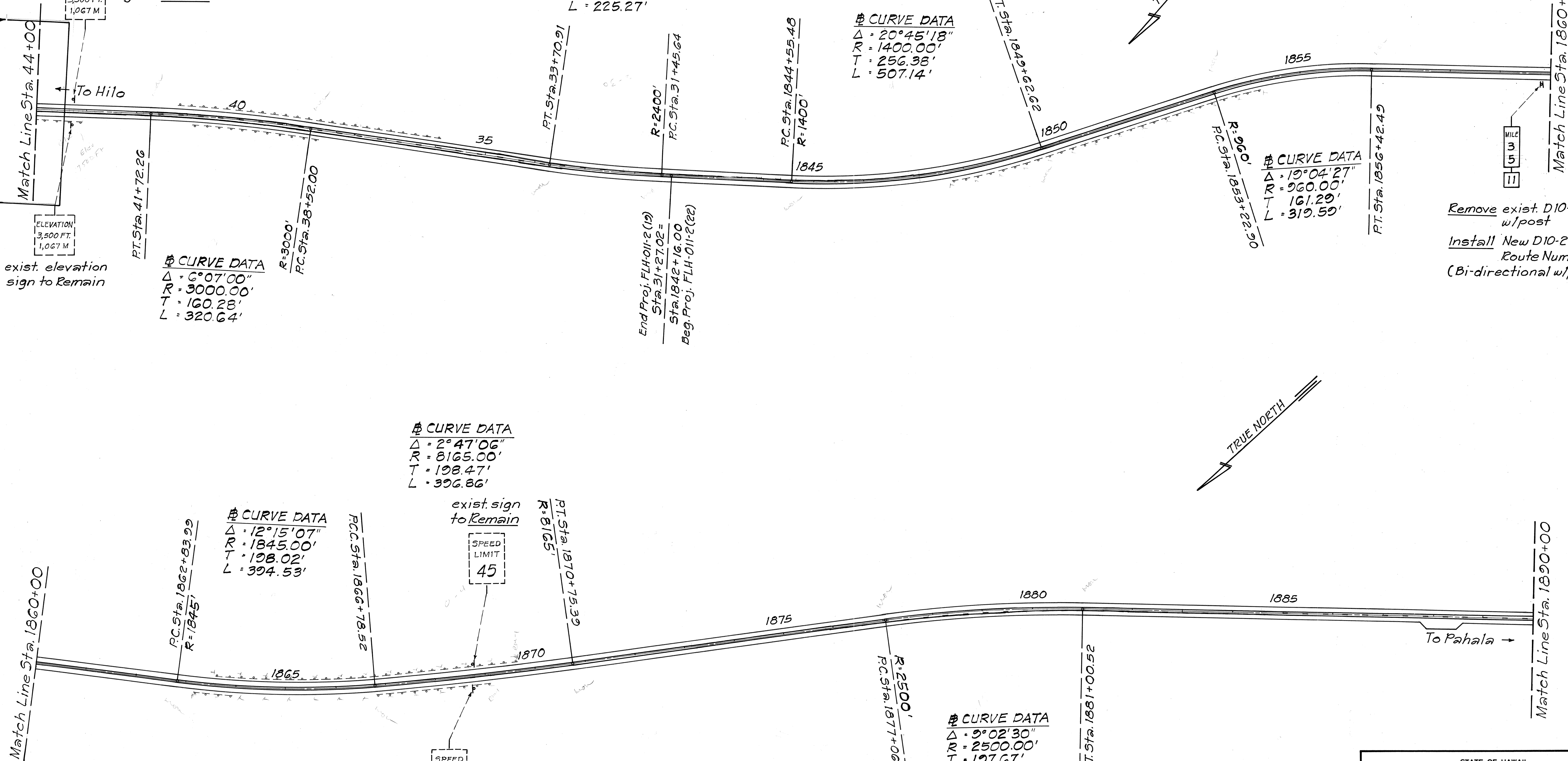
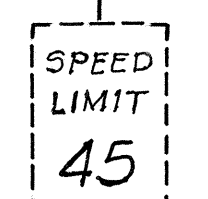
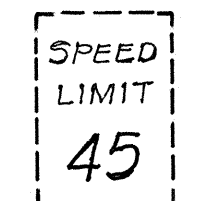
$\Delta = 9^{\circ}02'30''$   
 $R = 2500.00'$   
 $T = 197.67'$   
 $L = 394.51'$



Remove exist. D10-2 w/post  
 Install New D10-2 & Route Number (Bi-directional w/post)

exist. sign to Remain

exist. sign to Remain



ORIGINAL PLAN	DATE
SURVEY PLOTTED BY	
DRAWN BY	
TRACED BY	
DESIGNED BY	
CHECKED BY	
NO.	

6/8/94	Revised Pavement Striping & Milepost Marker
DATE	REVISION

STATE OF HAWAII  
 DEPARTMENT OF TRANSPORTATION  
 HIGHWAYS DIVISION

**PLAN**  
**ROADWAY, STRIPING & SIGNS**  
 MAMALAOHA HIGHWAY RESURFACING  
 HAWAII VOLCANOES NATIONAL PARK  
 F.A. PROJECT NO. STP-011-2(28)  
 Scale: 1"=100' Date: May, 1994

SHEET No. 2 OF 4 SHEETS

FED. ROAD DIST. NO.	STATE	FED. AID PROJ. NO.	FISCAL YEAR	SHEET NO.	TOTAL SHEETS
HAWAII	HAW.	STP-011-2(28)	1994	7	10

**§ CURVE DATA**  
 $\Delta = 2^{\circ}38'36''$   
 $R = 3900.00'$   
 $T = 89.98'$   
 $L = 179.93'$

**§ CURVE DATA**  
 $\Delta = 7^{\circ}10'05''$   
 $R = 1270.00'$   
 $T = 79.55'$   
 $L = 158.88'$

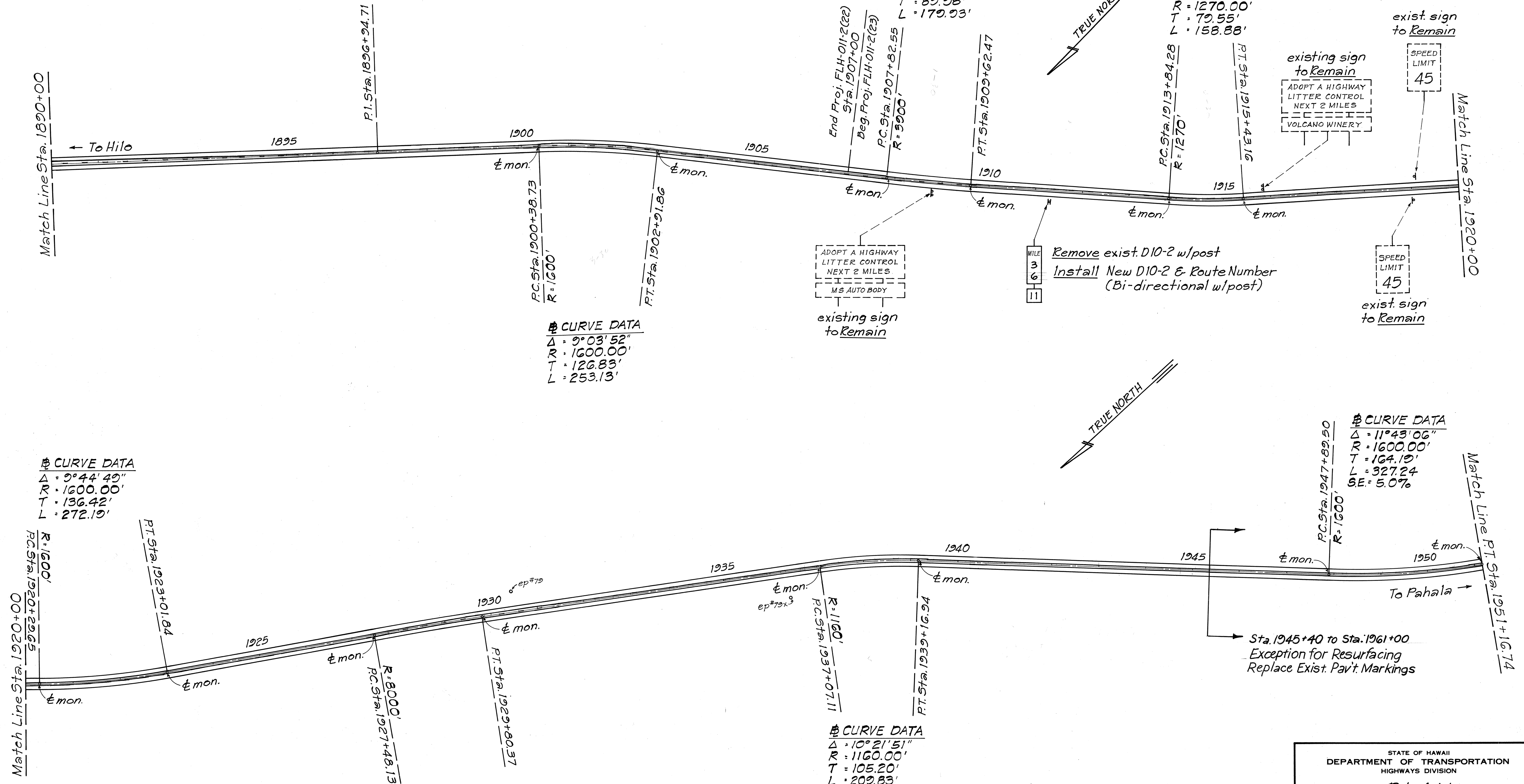
**§ CURVE DATA**  
 $\Delta = 9^{\circ}03'52''$   
 $R = 1600.00'$   
 $T = 126.83'$   
 $L = 253.13'$

**§ CURVE DATA**  
 $\Delta = 9^{\circ}44'49''$   
 $R = 1600.00'$   
 $T = 136.42'$   
 $L = 272.19'$

**§ CURVE DATA**  
 $\Delta = 11^{\circ}43'06''$   
 $R = 1600.00'$   
 $T = 164.19'$   
 $L = 327.24'$   
 $S.E. = 5.0\%$

**§ CURVE DATA**  
 $\Delta = 10^{\circ}21'51''$   
 $R = 1160.00'$   
 $T = 105.20'$   
 $L = 209.83'$

**§ CURVE DATA**  
 $\Delta = 1^{\circ}59'48''$   
 $R = 8000.00'$   
 $T = 116.13'$   
 $L = 232.25'$



ADOPT A HIGHWAY  
LITTER CONTROL  
NEXT 2 MILES  
MS AUTO BODY

Remove exist. D10-2 w/post  
Install New D10-2 & Route Number  
(Bi-directional w/post)

existing sign  
to Remain  
ADOPT A HIGHWAY  
LITTER CONTROL  
NEXT 2 MILES  
VOLCANO WINERY

SPEED LIMIT  
45

SPEED LIMIT  
45

Sta. 1945+40 to Sta. 1961+00  
Exception for Resurfacing  
Replace Exist. Pav't. Markings

DATE	
SURVEY PLOTTED BY	
DRAWN BY	
TRACED BY	
CHECKED BY	
NO.	

3/8/94	Revised Pavement Striping & Milepost Marker
DATE	REVISION

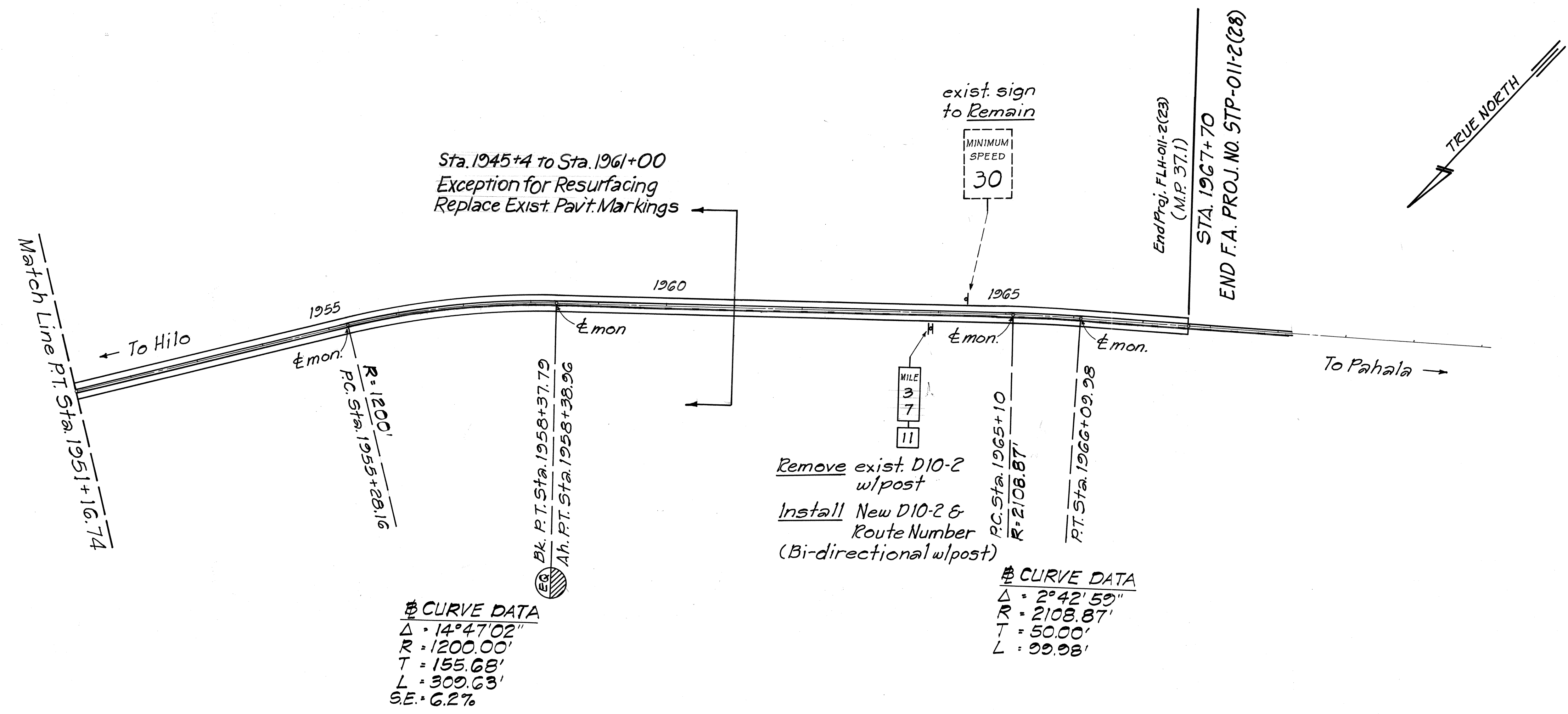
STATE OF HAWAII  
DEPARTMENT OF TRANSPORTATION  
HIGHWAYS DIVISION

**PLAN**  
**ROADWAY, STRIPING & SIGNS**

MAMALAHOA HIGHWAY RESURFACING  
HAWAII VOLCANOES NATIONAL PARK  
F.A. PROJECT NO. STP-011-2(28)  
Scale: 1"=100' Date: May, 1994  
SHEET NO. 3 OF 4 SHEETS

ADD. 7

FED. ROAD DIST. NO.	STATE	FED. AID PROJ. NO.	FISCAL YEAR	SHEET NO.	TOTAL SHEETS
HAWAII	HAW.	STP-011-2(28)	1994	8	10



SURVEY PLOTTED BY	DATE
DRAWN BY	
DESIGNED BY	
CHECKED BY	
NOTE BOOK	
No.	

6/8/94	Revised Milepost Marker
DATE	REVISION

STATE OF HAWAII  
DEPARTMENT OF TRANSPORTATION  
HIGHWAYS DIVISION

**PLAN**  
**ROADWAY, STRIPING & SIGNS**  
MAMALAOA HIGHWAY RESURFACING  
HAWAII VOLCANOES NATIONAL PARK  
F.A. PROJECT NO. STP-011-2(28)

Scale: 1"=100'      Date: May, 1994

SHEET No. 4 OF 4 SHEETS