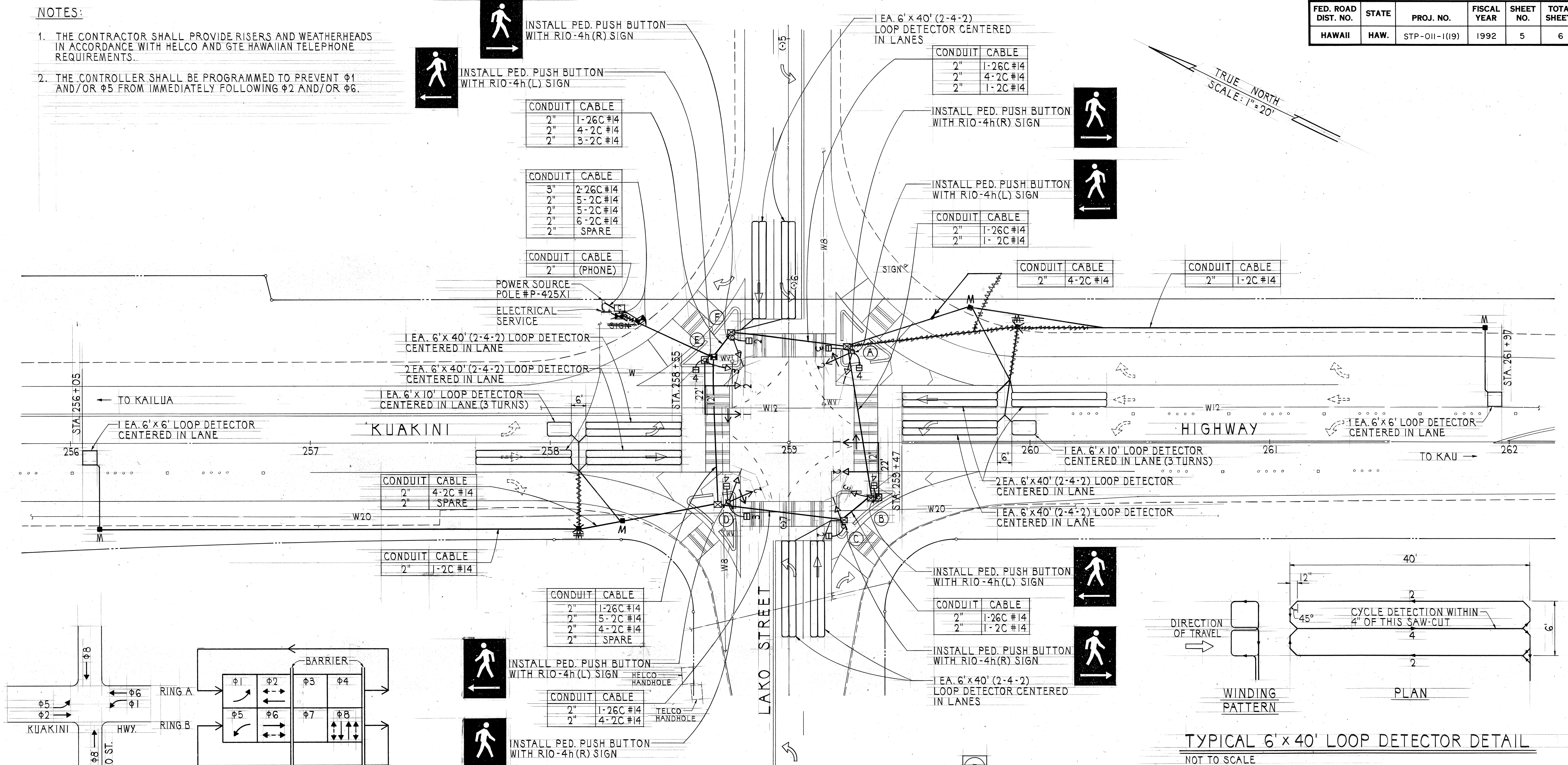
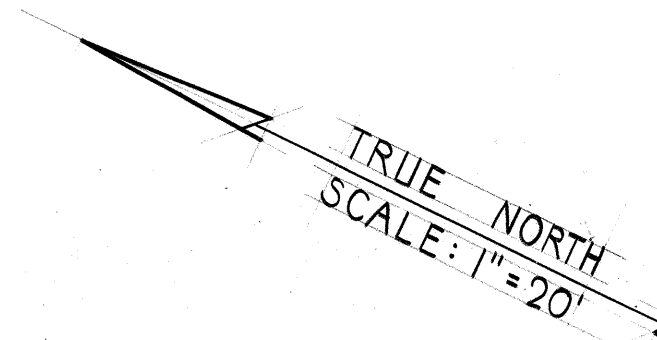


**NOTES:**

1. THE CONTRACTOR SHALL PROVIDE RISERS AND WEATHERHEADS IN ACCORDANCE WITH HELCO AND GTE HAWAIIAN TELEPHONE REQUIREMENTS.
2. THE CONTROLLER SHALL BE PROGRAMMED TO PREVENT  $\phi 1$  AND/OR  $\phi 5$  FROM IMMEDIATELY FOLLOWING  $\phi 2$  AND/OR  $\phi 6$ .



CONDUIT	CABLE
2"	1-26C #14
2"	4-2C #14
2"	3-2C #14

CONDUIT	CABLE
3"	2-26C #14
2"	5-2C #14
2"	5-2C #14
2"	6-2C #14
2"	SPARE

CONDUIT	CABLE
2"	(PHONE)

CONDUIT	CABLE
2"	1-26C #14
2"	1-2C #14

CONDUIT	CABLE
2"	4-2C #14

CONDUIT	CABLE
2"	1-2C #14

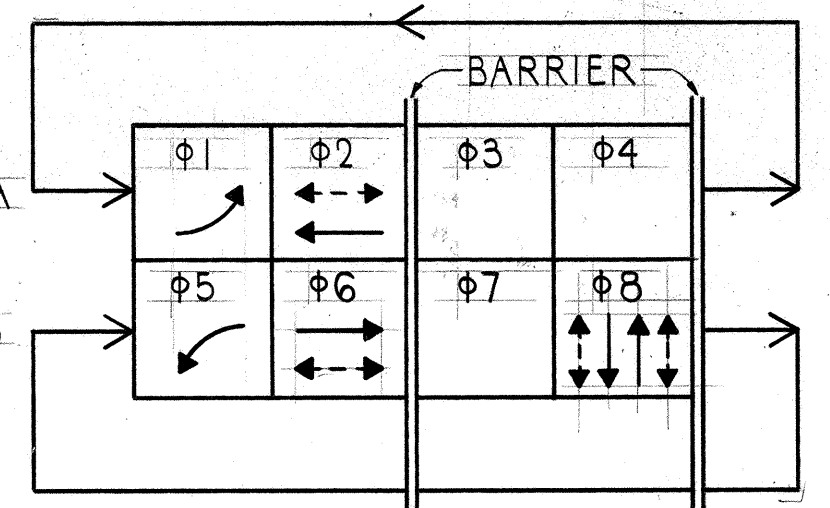
CONDUIT	CABLE
2"	4-2C #14
2"	SPARE

CONDUIT	CABLE
2"	1-2C #14

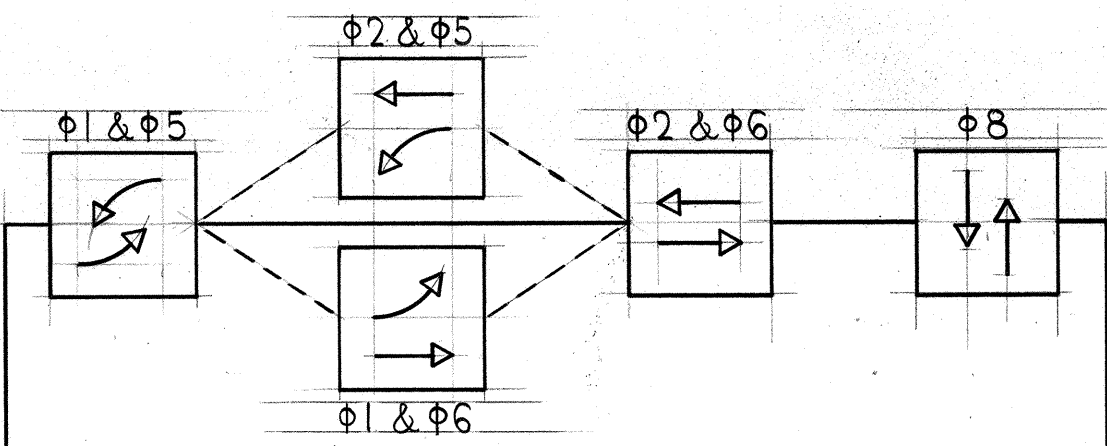
CONDUIT	CABLE
2"	1-26C #14
2"	5-2C #14
2"	4-2C #14
2"	SPARE

CONDUIT	CABLE
2"	1-26C #14
2"	1-2C #14

CONDUIT	CABLE
2"	1-26C #14
2"	4-2C #14



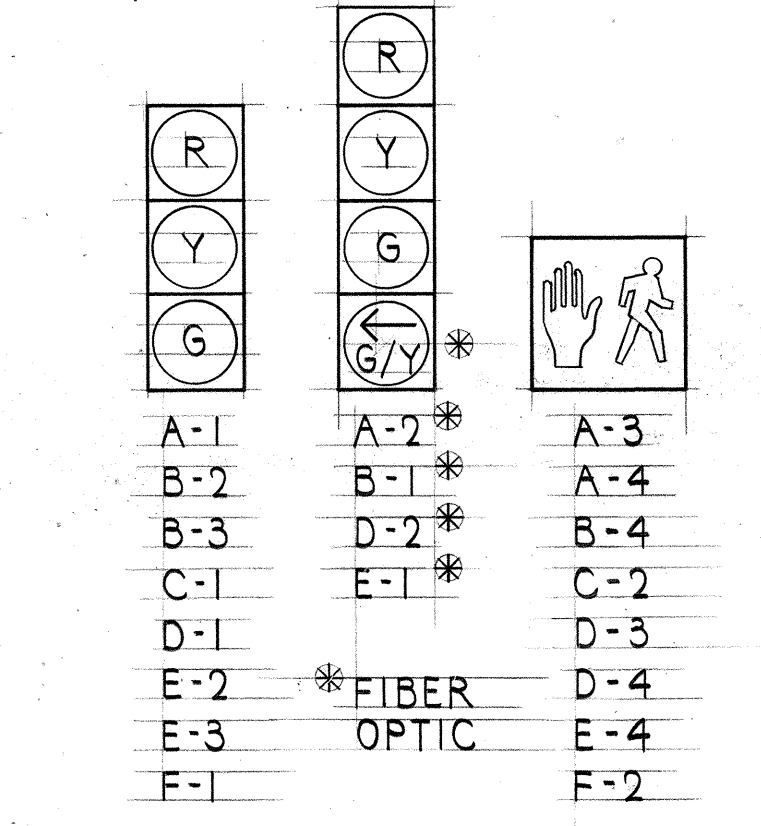
NEMA 2-8 PHASE CONTROLLER



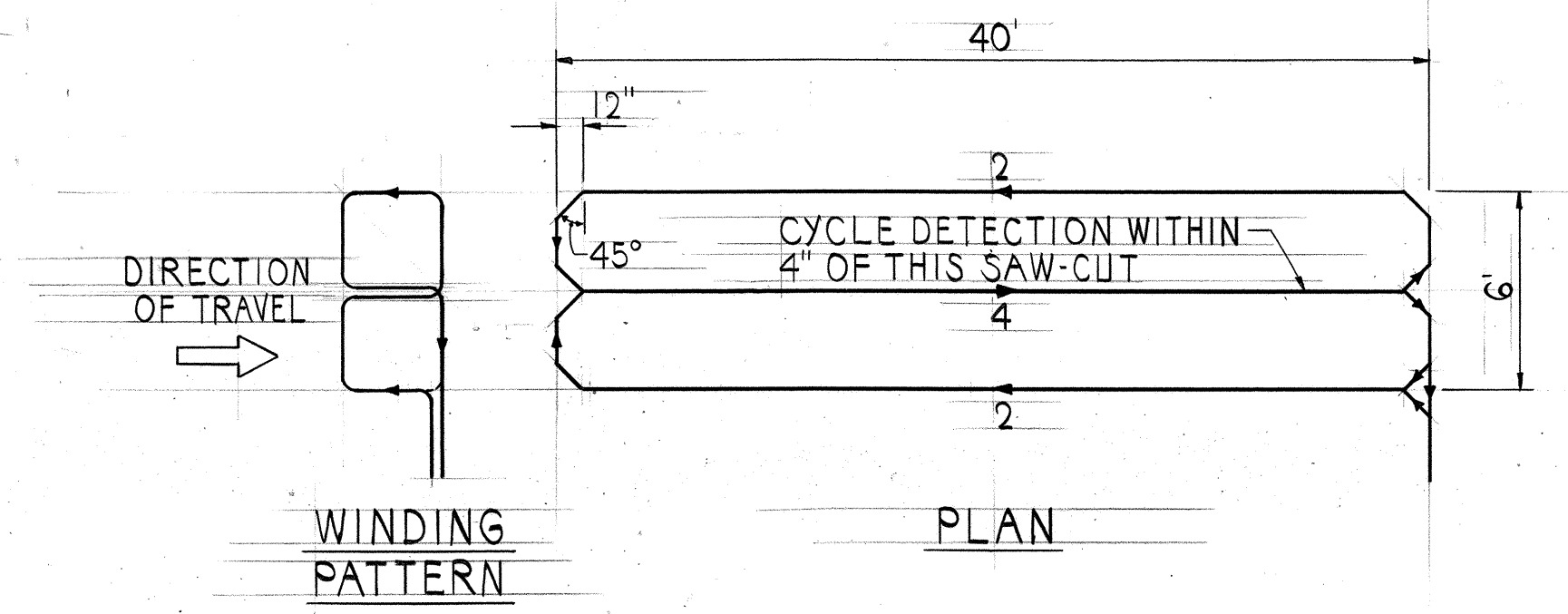
PHASE DIAGRAM

**TRAFFIC SIGNAL POLES**

POLE	TYPE	MOUNTING
A	I	II
B	II	IV, VI
C	I	I
D	I	II
E	II	IV, VI
F	I	I

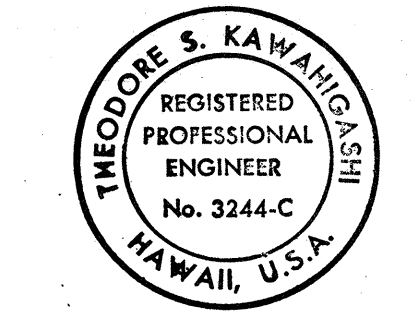


SIGNAL INDICATIONS



TYPICAL 6' x 40' LOOP DETECTOR DETAIL  
NOT TO SCALE

DATE: \_\_\_\_\_  
 SURVEY OBTAINED BY: \_\_\_\_\_  
 DRAWN BY: \_\_\_\_\_  
 DESIGNED BY: \_\_\_\_\_  
 NOTE BOOK: \_\_\_\_\_  
 QUANTITIES BY: \_\_\_\_\_  
 CHECKED BY: \_\_\_\_\_  
 No. \_\_\_\_\_



THIS WORK WAS PREPARED BY ME OR UNDER MY SUPERVISION  
*Theodore S. Kawahigashi*  
 Signature

STATE OF HAWAII  
 DEPARTMENT OF TRANSPORTATION  
 HIGHWAYS DIVISION

**TRAFFIC SIGNAL PLAN**

KUAKINI HIGHWAY  
 TRAFFIC SIGNAL SYSTEM  
 AT LAKO STREET  
 PROJECT NO. STP-011-1(19)

SCALE: AS NOTED DATE: AUG. 28, 1992  
 SHEET NO. 5 OF 6 SHEETS