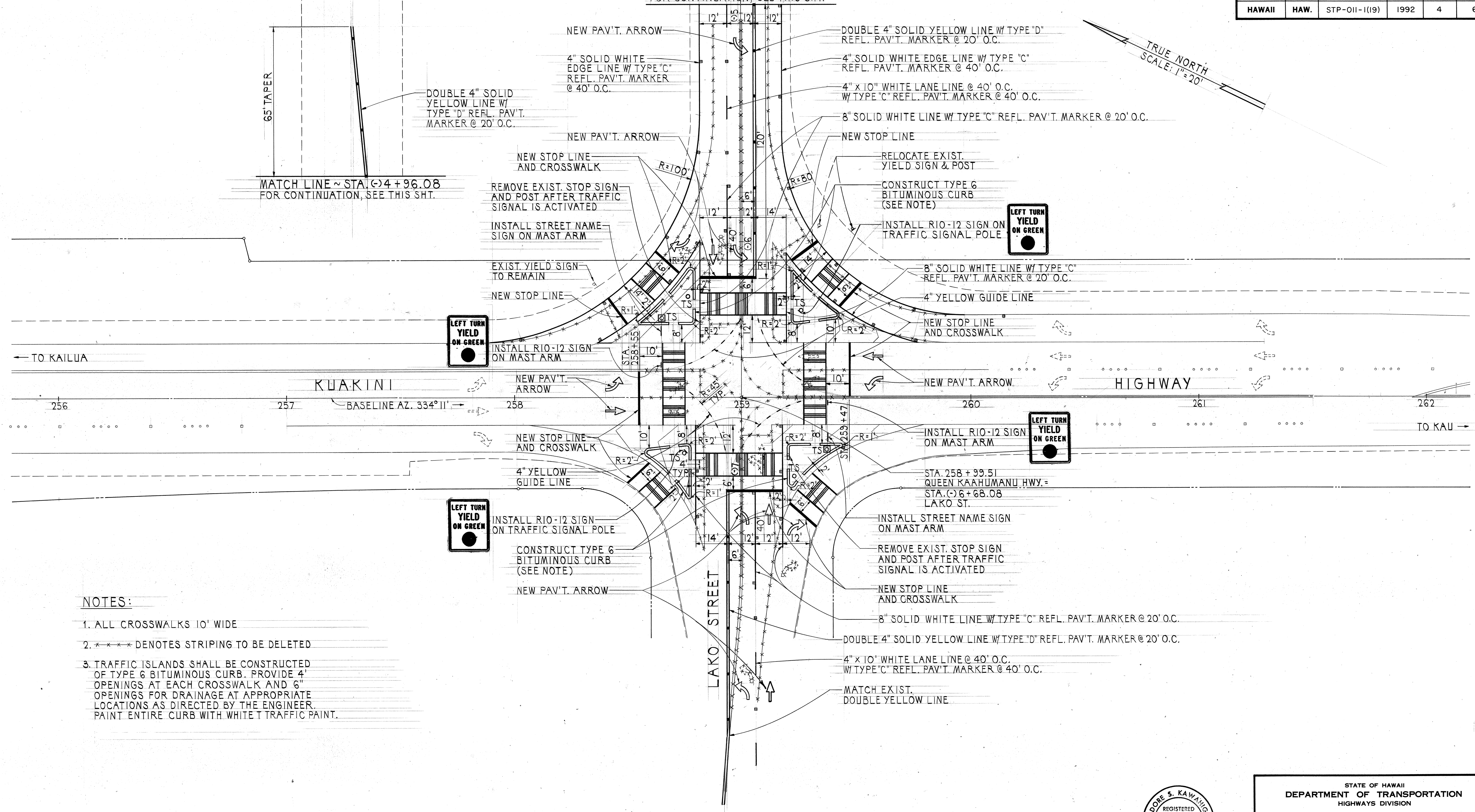
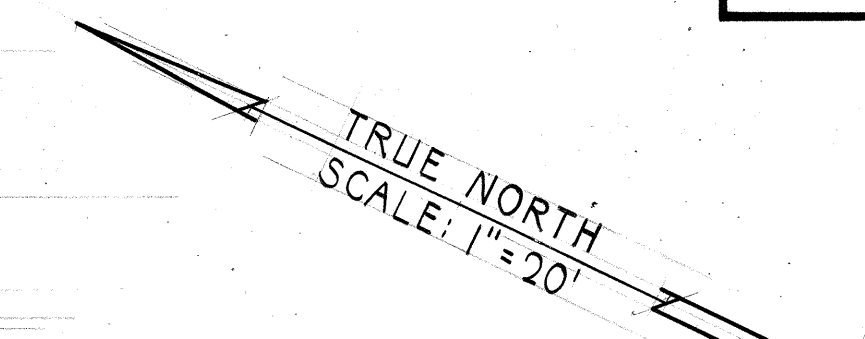


FED. ROAD DIST. NO.	STATE	PROJ. NO.	FISCAL YEAR	SHEET NO.	TOTAL SHEETS
HAWAII	HAW.	STP-011-1(19)	1992	4	6

MATCH LINE ~ STA. (+)4 + 96.08
FOR CONTINUATION, SEE THIS SHT.

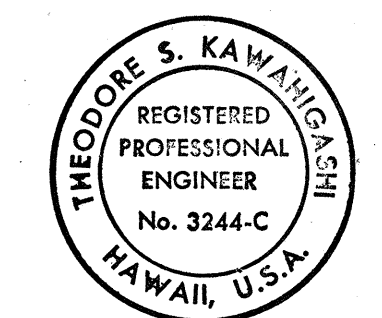
MATCH LINE ~ STA. (+)4 + 96.08
FOR CONTINUATION, SEE THIS SHT.



NOTES:

1. ALL CROSSWALKS 10' WIDE
2. * * * * DENOTES STRIPING TO BE DELETED
3. TRAFFIC ISLANDS SHALL BE CONSTRUCTED OF TYPE 6 BITUMINOUS CURB. PROVIDE 4' OPENINGS AT EACH CROSSWALK AND 6" OPENINGS FOR DRAINAGE AT APPROPRIATE LOCATIONS AS DIRECTED BY THE ENGINEER. PAINT ENTIRE CURB WITH WHITE TRAFFIC PAINT.

DATE	____
DESIGNED BY	____
TRACED BY	____
DESIGNED BY	____
QUANTITIES BY	____
CHECKED BY	____
NO.	____



THIS WORK WAS PREPARED BY ME OR UNDER MY SUPERVISION
Theodore S. Kawahiga
Signature

STATE OF HAWAII
DEPARTMENT OF TRANSPORTATION
HIGHWAYS DIVISION

STRIPING & SIGNING PLAN

KUAKINI HIGHWAY
TRAFFIC SIGNAL SYSTEM
AT LAKO STREET
PROJECT NO. STP-011-1(19)

SCALE: AS NOTED DATE: AUG. 28, 1992

SHEET NO. 4 OF 6 SHEETS