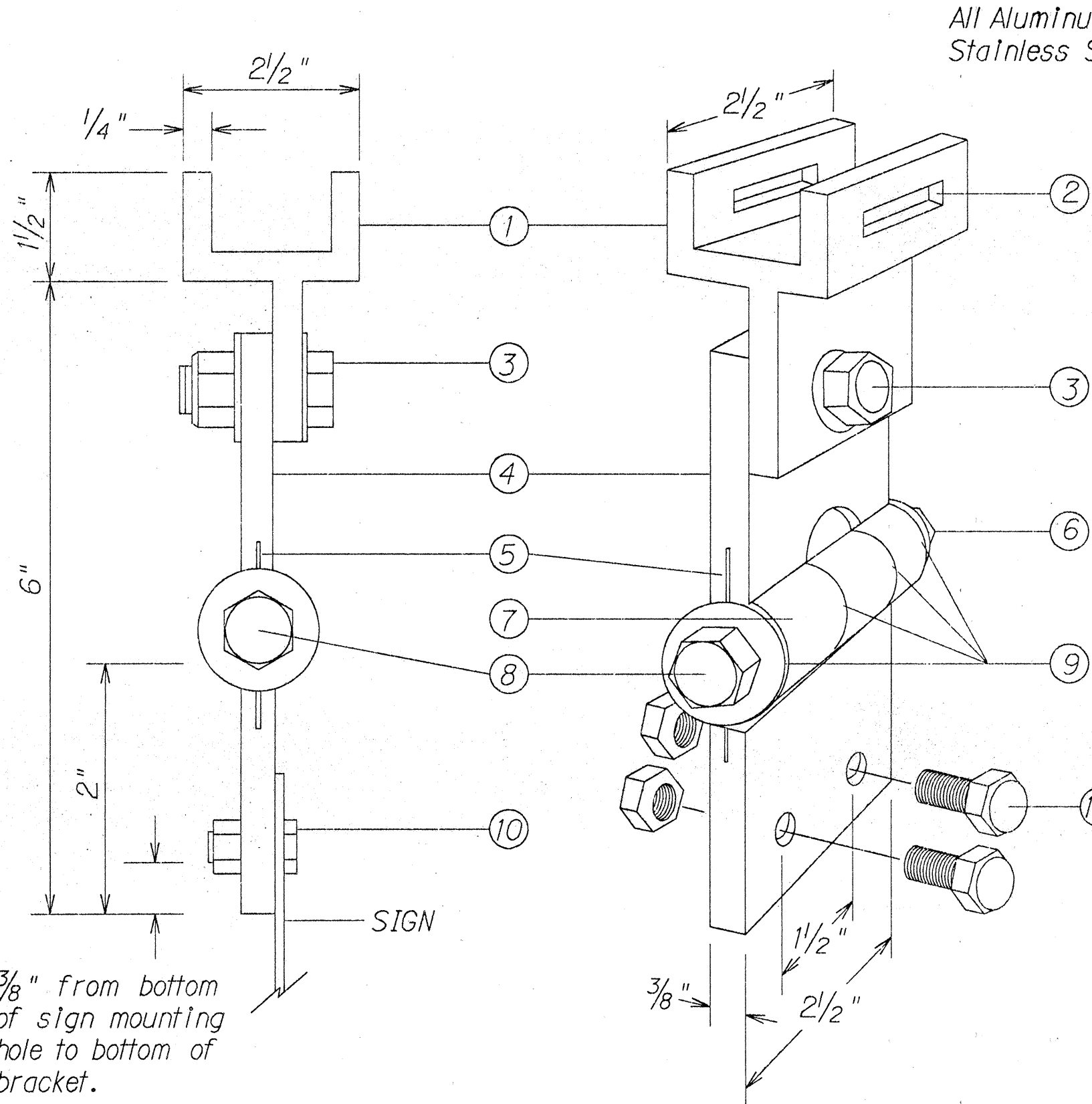


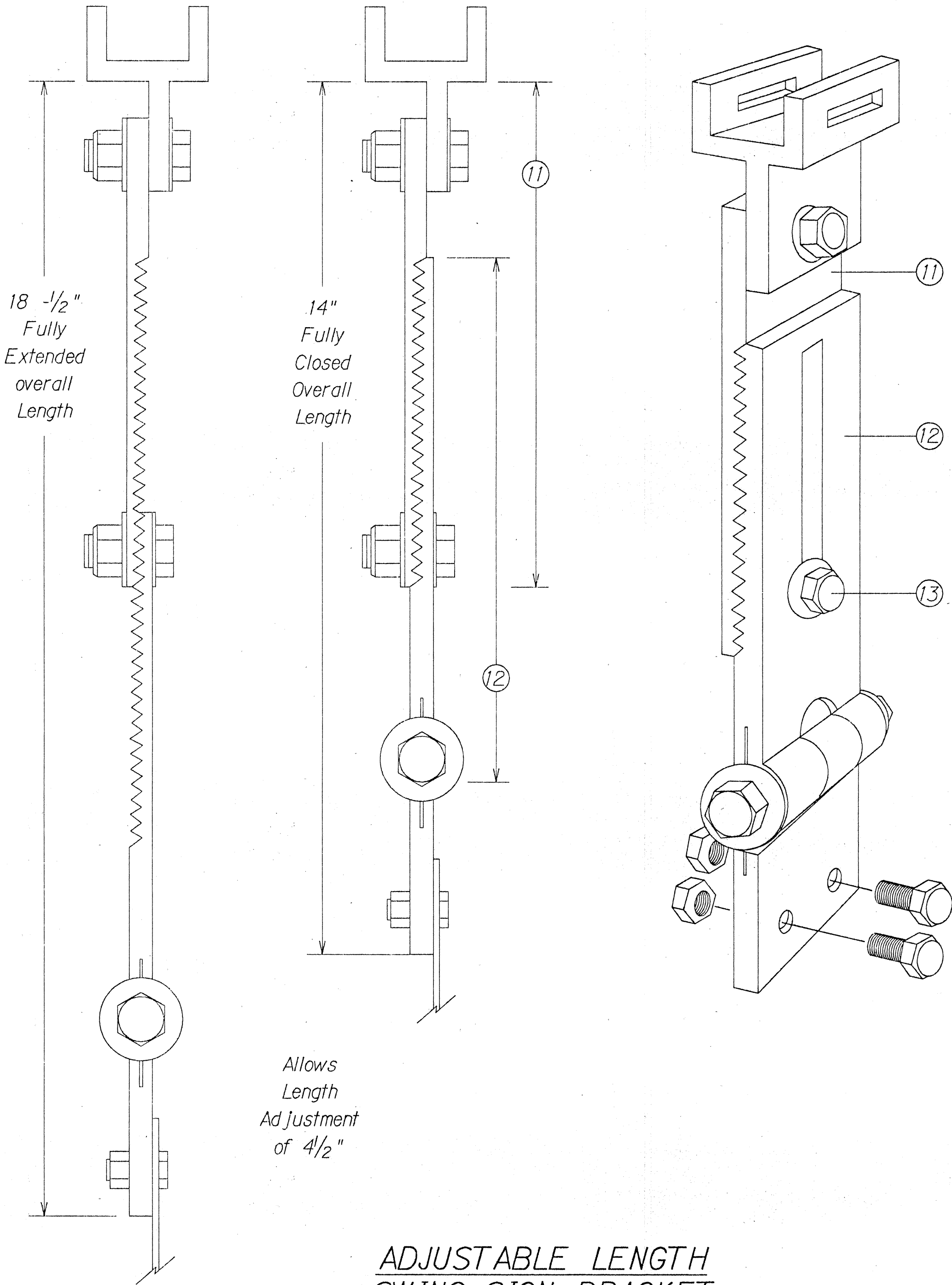
FED. ROAD DIST. NO.	STATE	PROJ. NO.	FISCAL YEAR	SHEET NO.	TOTAL SHEETS
HAWAII	HAW.	STP-011-1(19)	1992	6	6



**FIXED LENGTH NON-ADJUSTABLE
SWING SIGN BRACKET**

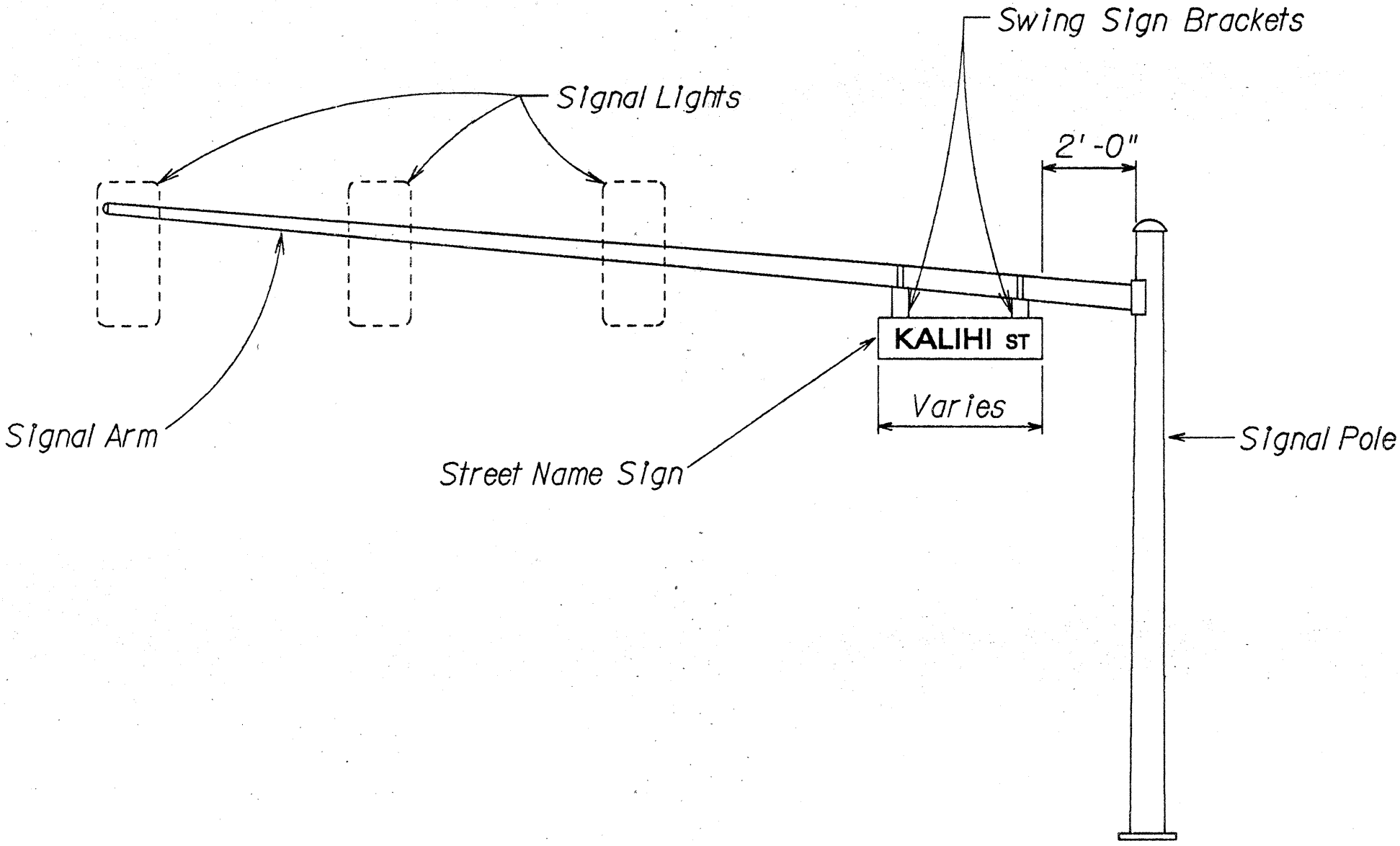
- ① Pivotal Upper Bracket
- ② 15/8" x 1/4" Slot for double strapping to electroler mast arm. (M2G-34S(HD) .030" x 3/4" Heavy Duty Stainless Steel Strap with M2G-34B(HD) Buckle recommended.)
- ③ 1/2" - 13 x 1 1/2" Stainless Steel Hex Head Bolt with Stainless Steel Hex Lock Nut and 1/16" Stainless Steel Washer (both sides). Allows upper bracket to pivot and align with elec-troler mast arm.
- ④ 6" Overall drop with Fixed Length Sign Bracket
- ⑤ Stainless Steel Dampener Spring (Removable)
- ⑥ Stainless Steel Hex Lock Nut with 1/16" Stainless Steel Washer
- ⑦ 1" O.D. Axle Housing
- ⑧ 1/2" - 13 x 4" Stainless Steel Hex Head Bolt with 1/16" Stainless Steel Washer
- ⑨ Oillite Bushing
- ⑩ Sign Mounting Sets, consisting of two each 5/16" - 18 x 1" Stainless Steel Hex Head Bolt with Stainless Steel Hex Lock Nut. Two holes on 1 1/2" centers provide positive lock sign mounting to bracket.

Dimensions may vary slightly.

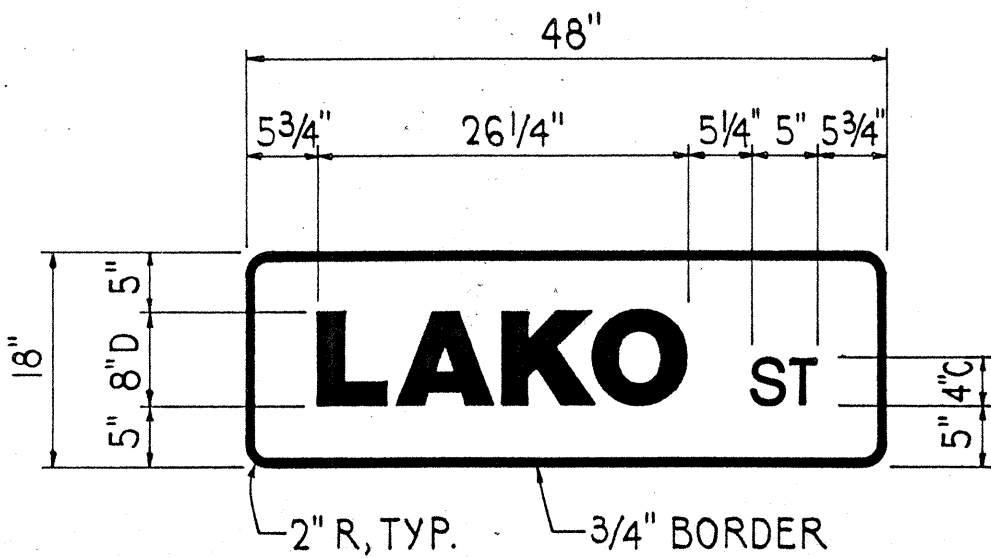


**ADJUSTABLE LENGTH
SWING SIGN BRACKET**

- ⑪ 8 1/4" overall length Upper Adjustable Sign Bracket section
- ⑫ 9" overall length Lower Adjustable Sign Bracket section, including Axle Housing (8" overall length to top of Axle Housing)
- ⑬ 1/2" - 13 x 1 1/2" Stainless Steel Hex Bolt with Stainless Steel Hex Lock Nut and 1/16" Stainless Steel Washers (both sides). Loosen lock nut, adjust bracket teeth to level sign.



**STREET NAME SIGN MOUNTING
ON MAST ARM**



**STREET NAME SIGN DETAIL
NOT TO SCALE**

- NOTES:**
1. Street name signs shall have white message and border on green background.
 2. Provide the same message on both sides of each sign.
 3. All sign faces shall be completely reflectorized with Type "B" reflective sheeting.
 4. The sign shall be in conformance with the requirements of Section 712.20 of the Standard Specification.

STATE OF HAWAII
DEPARTMENT OF TRANSPORTATION
HIGHWAYS DIVISION

STREET SIGN DETAIL

KUAKINI HIGHWAY
TRAFFIC SIGNAL SYSTEM
AT LAKO STREET
PROJECT NO. STP-011-1(19)

SCALE: AS NOTED
SHEET No. 1 OF 1 SHEETS

DATE: AUG. 28, 1992

ORIGINAL PLAN	SURVEY PLOTTED BY	DATE
NOTE BOOK	DRAWN BY	
	DESIGNED BY	
	QUANTITIES BY	
	CHECKED BY	
	NO.	