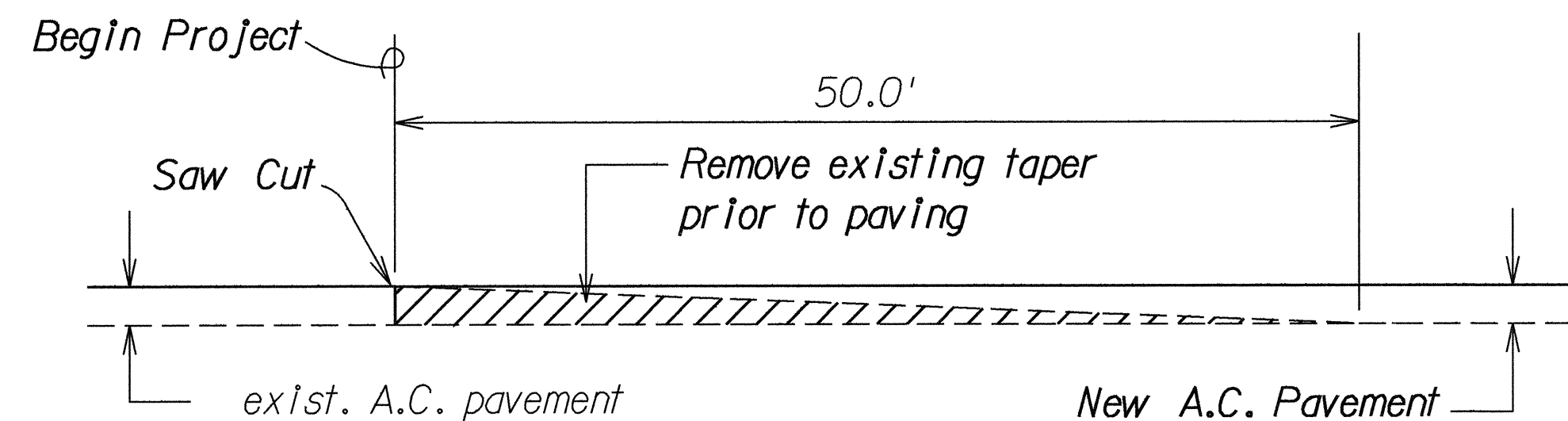


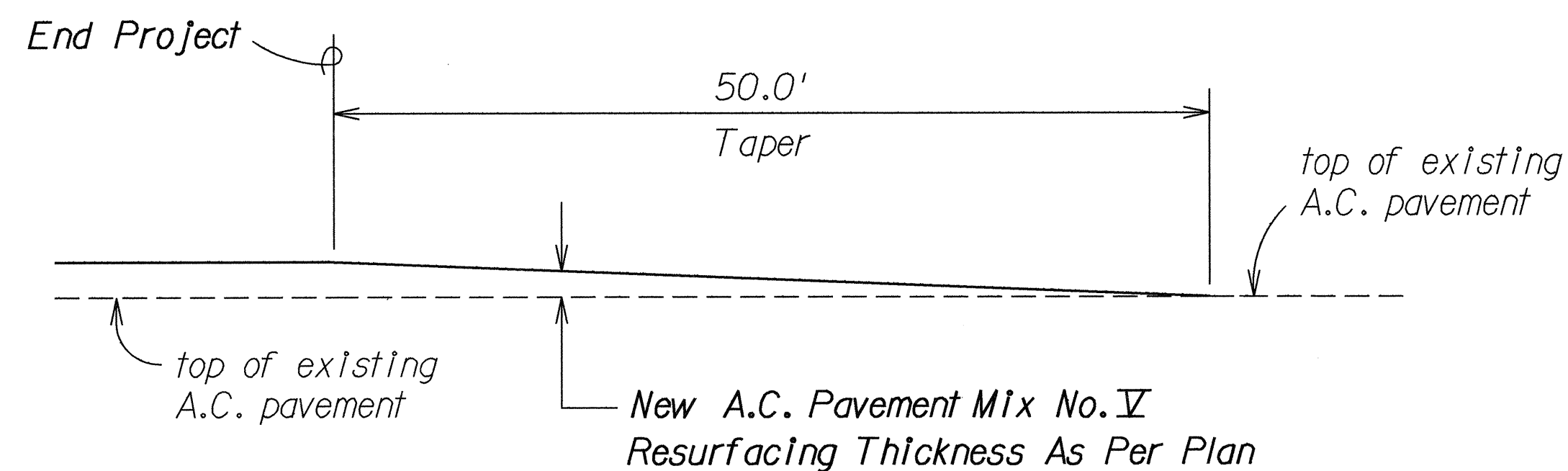
GENERAL NOTES

- Improvements consist of leveling and resurfacing the existing pavement, installing pavement striping, markings and markers, and adjusting and/or reconstructing centerline and reference survey monument.
- Asphalt Concrete for leveling course shall be paid for under Item No. 401.0500- Asphalt Concrete Pavement, Mix No. V.
- Tack coat shall be incidental to Item No. 401.0500- Asphalt Concrete Pavement Mix No. V.
- Contractor's attention is directed to Section 401.03 of the Special Provisions and Standard Specifications. All longitudinal and transverse tapers shall be removed prior to commencing and continuing of paving operations.
- Construct smooth and easy riding connections to existing roadway at beginning and end of project. (See typical sections below)
- Existing pavement surface variable. Surface indicated here is not intended to represent any specific location.
- Preparation of shoulder areas for paving shall be done by the State. Contractor shall be responsible for finish rolling of the shoulders as necessary to prepare for paving of Asphalt Pavement Mix No. V. This work shall be considered incidental to Item No. 401.0500, Asphalt Concrete Pavement Mix No. V.

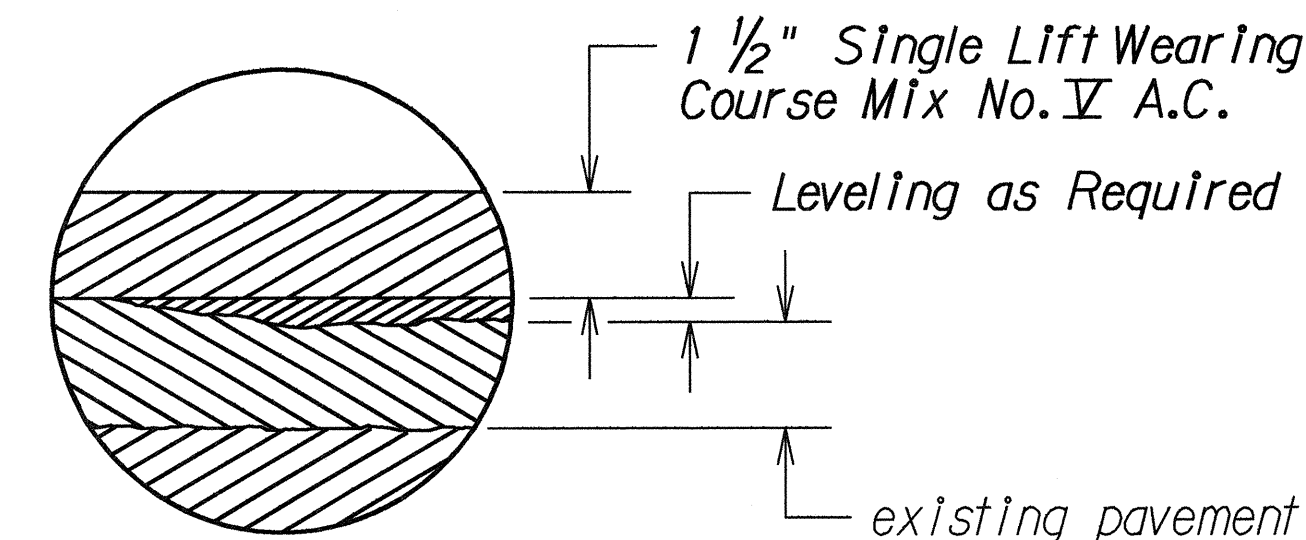
LEGEND FOR AS-BUILT POSTINGS	
	Squiggly line for as-built deletion
	Double line for as-built deletion
Roadway	Text for as-built posting



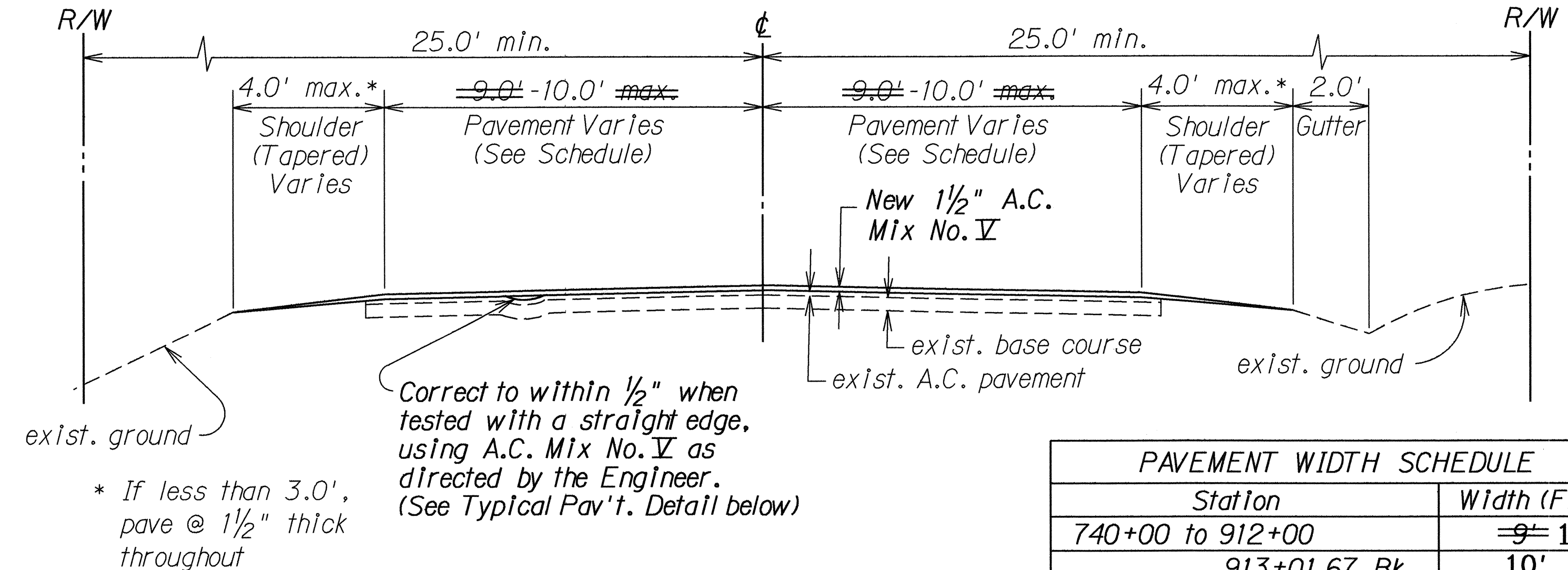
**TYPICAL SECTION OF LONGITUDINAL
PAVEMENT TRANSITION @ BEGIN PROJECT**
NOT TO SCALE



**TYPICAL SECTION OF LONGITUDINAL
PAVEMENT TRANSITION @ END PROJECT**
NOT TO SCALE

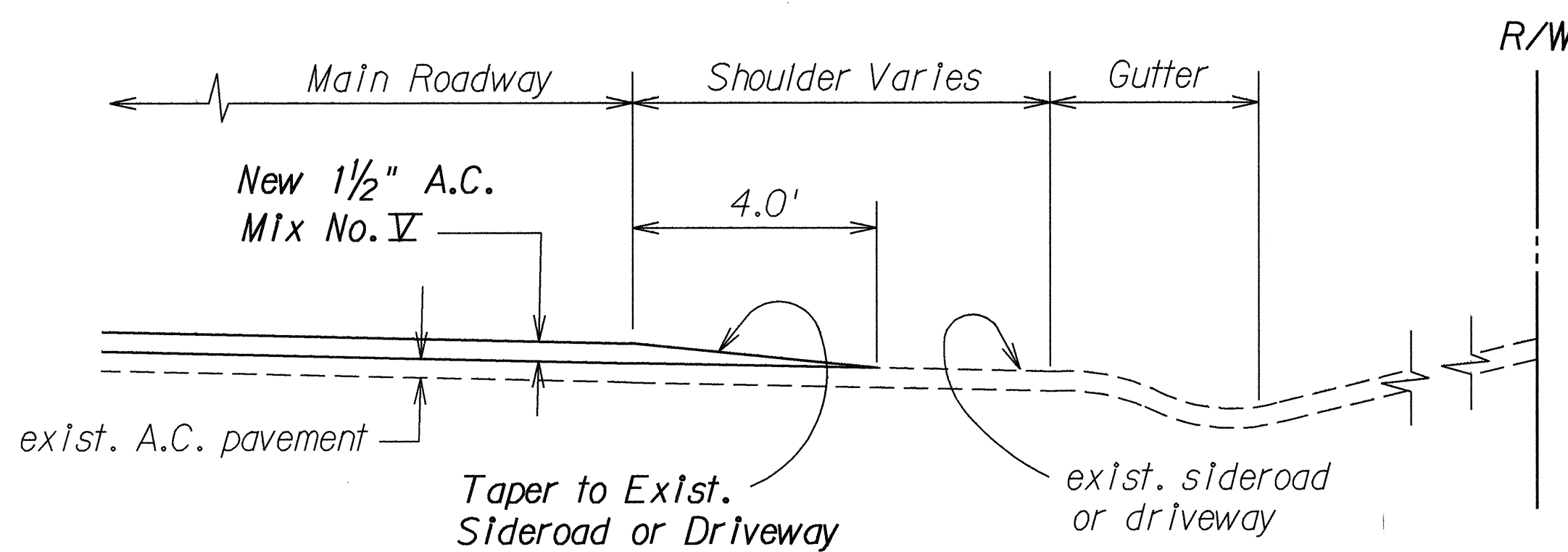


TYPICAL PAVEMENT DETAIL
NOT TO SCALE

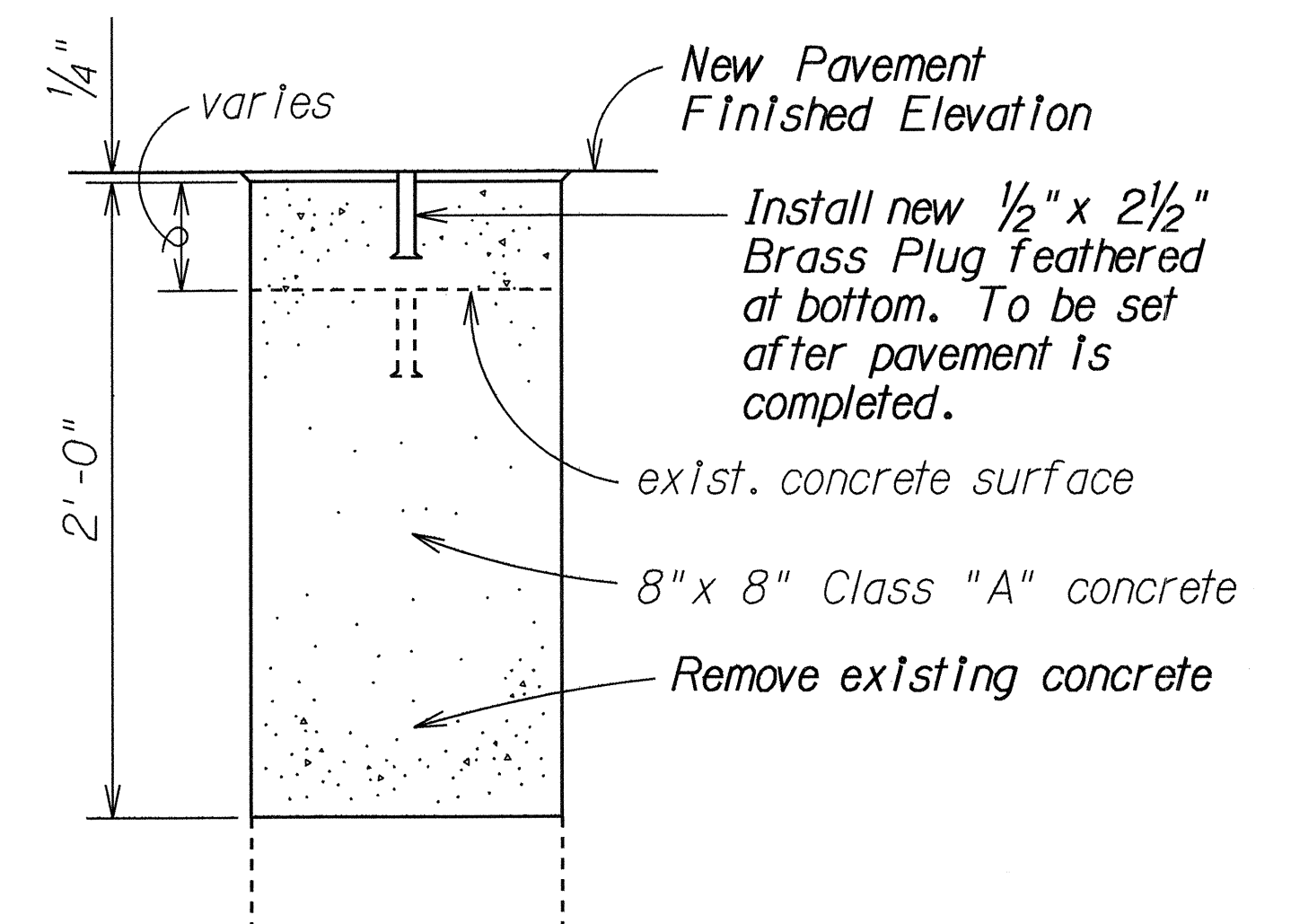


TYPICAL SECTION
Scale: 3/8" = 1'-0"

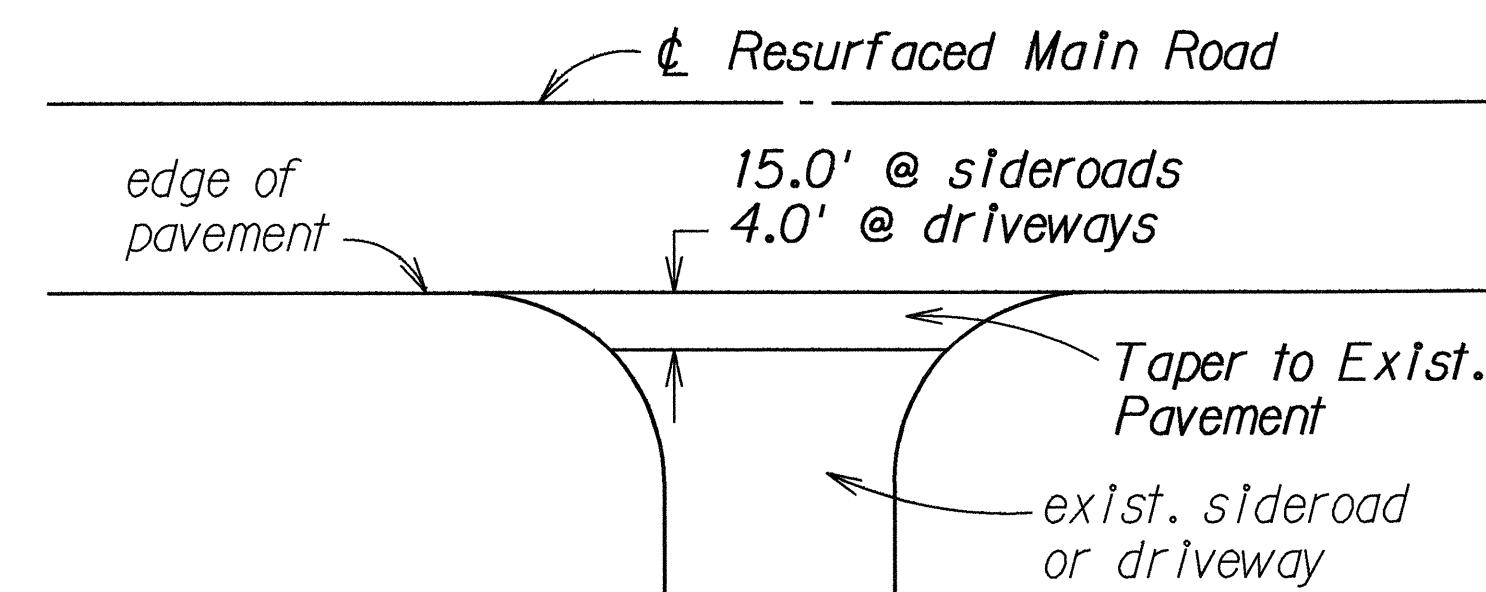
PAVEMENT WIDTH SCHEDULE	
Station	Width (Ft.)
740+00 to 912+00	9-10'
912+00 to 913+01.67 Bk. 40+06.28 Ah.	10' Transition
913+01.67 Bk. 40+06.28 Ah. to 2+00	10'



**TYPICAL SECTION SIDEROAD
& DRIVEWAY CONNECTION**
NOT TO SCALE



**DETAIL FOR RECONSTRUCTED
CL & REFERENCE SURVEY MONUMENT**
NOT TO SCALE



**TYPICAL PLAN SIDEROAD
& DRIVEWAY CONNECTION**
NOT TO SCALE

STATE OF HAWAII DEPARTMENT OF TRANSPORTATION HIGHWAYS DIVISION	
GENERAL NOTES AND TYPICAL SECTIONS	
HAWAII BELT ROAD RESURFACING Kahe to Kaapuna Project No. 11C-01-91M	
Scale: As Shown	Date: Sept., 1990
SHEET No. 1 OF 1 SHEETS	