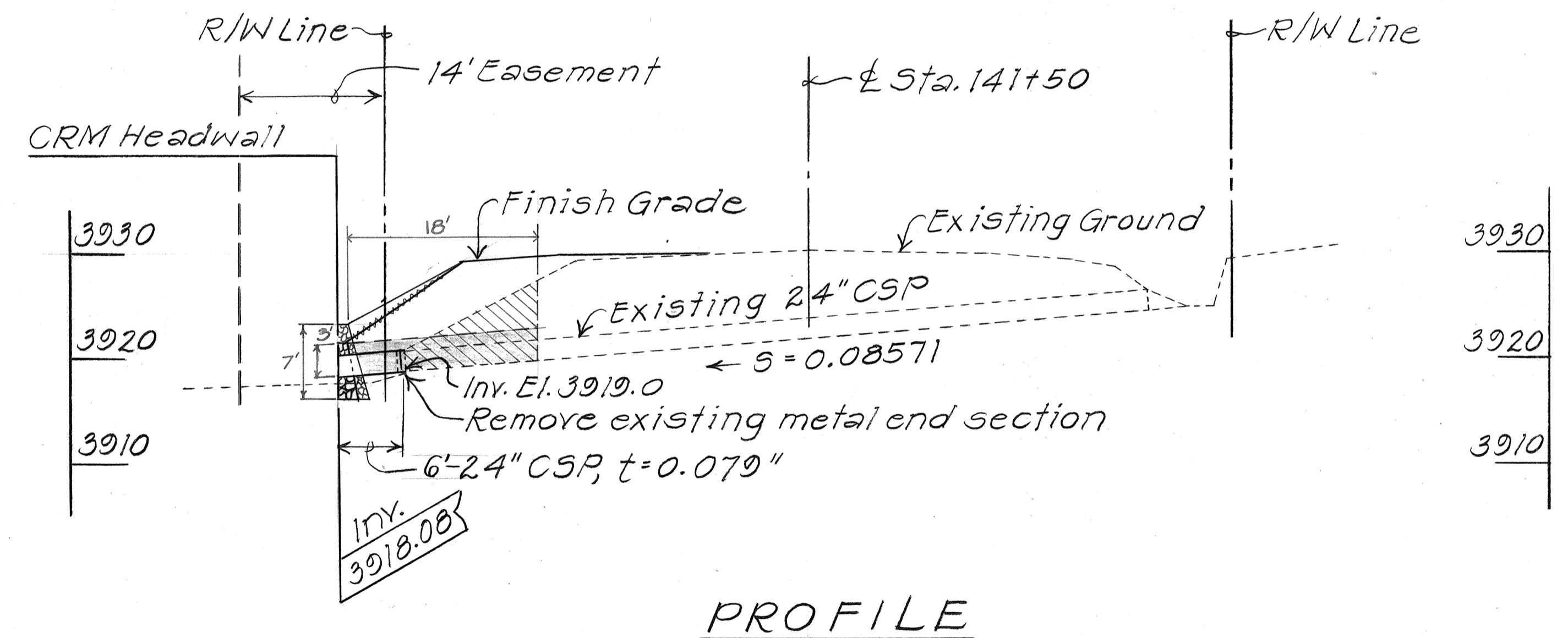
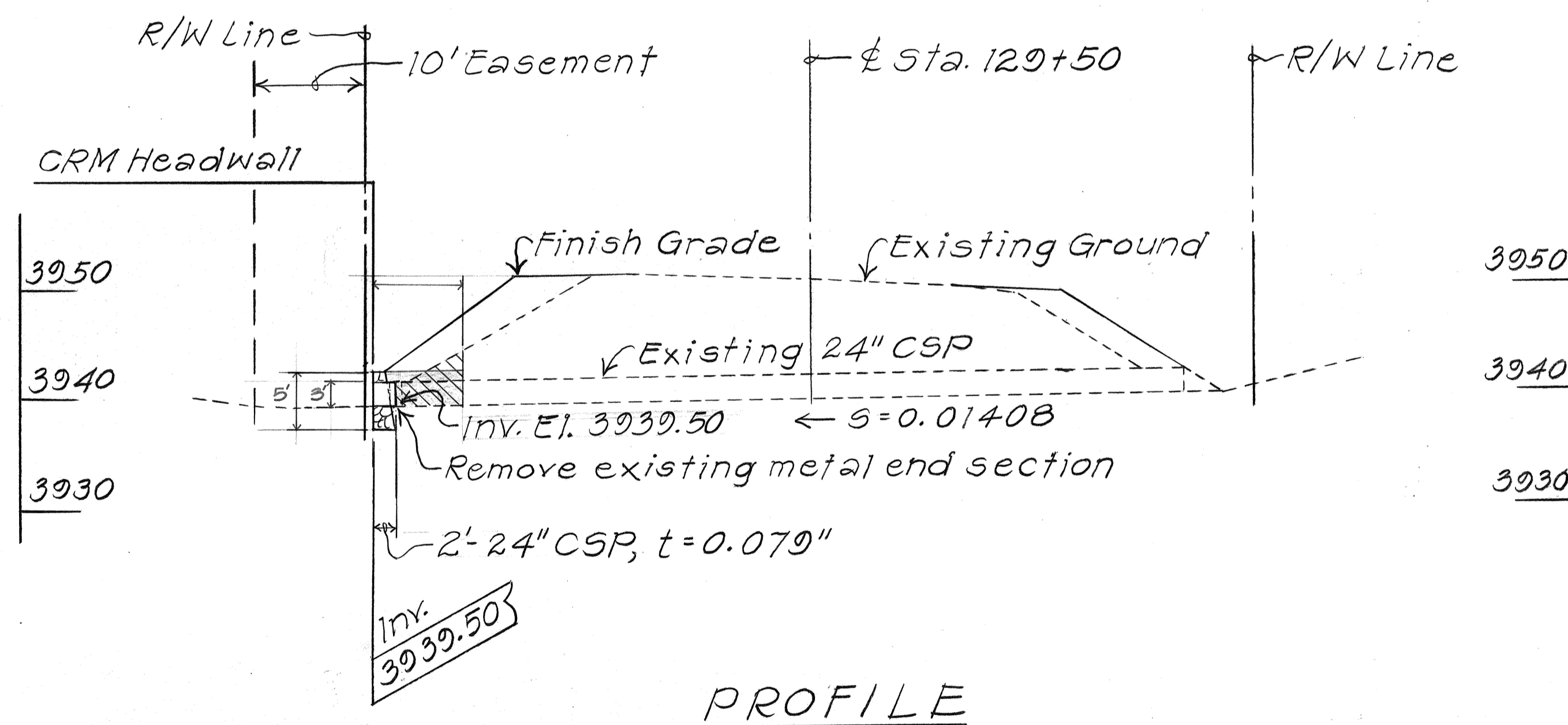
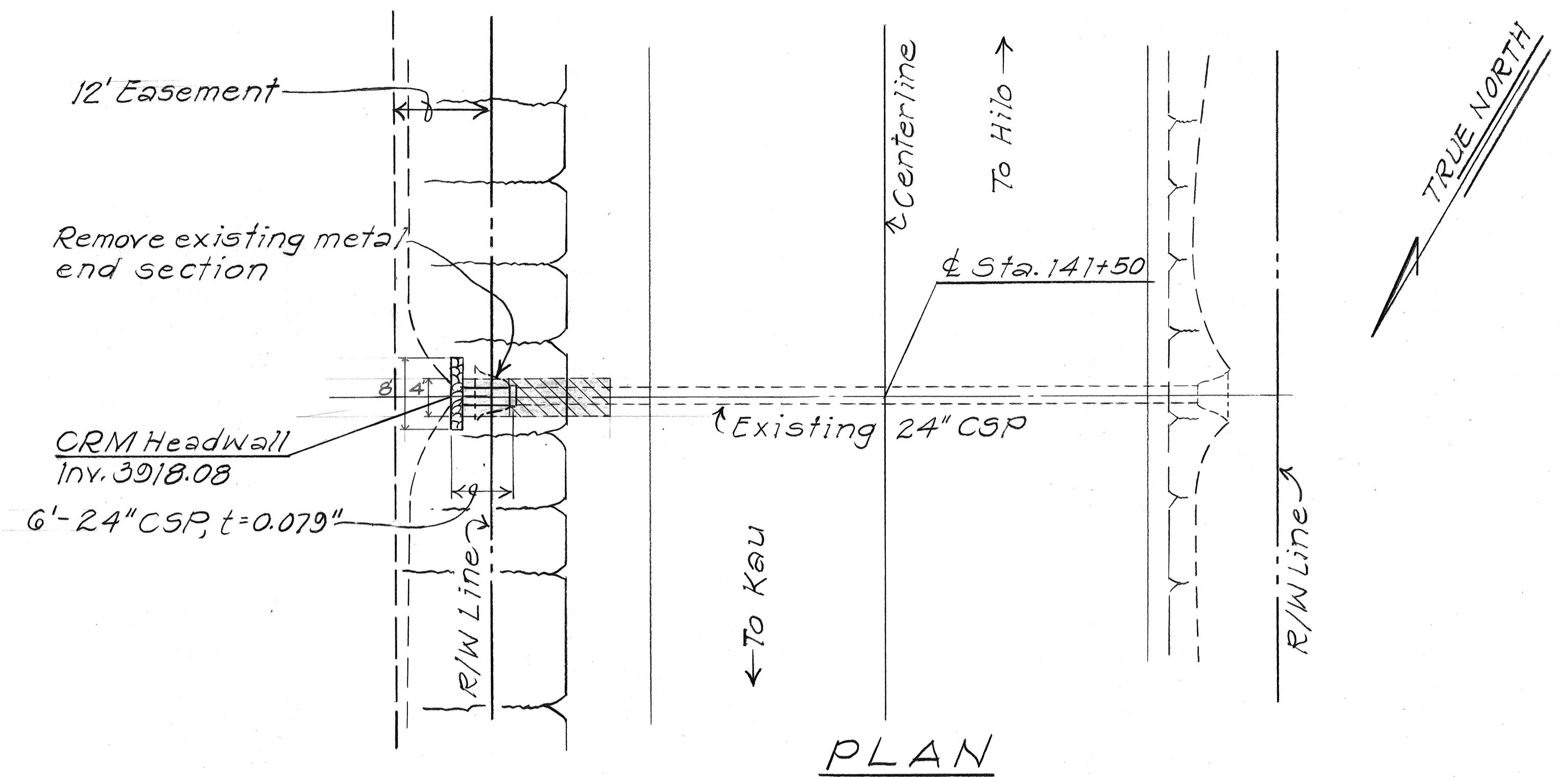
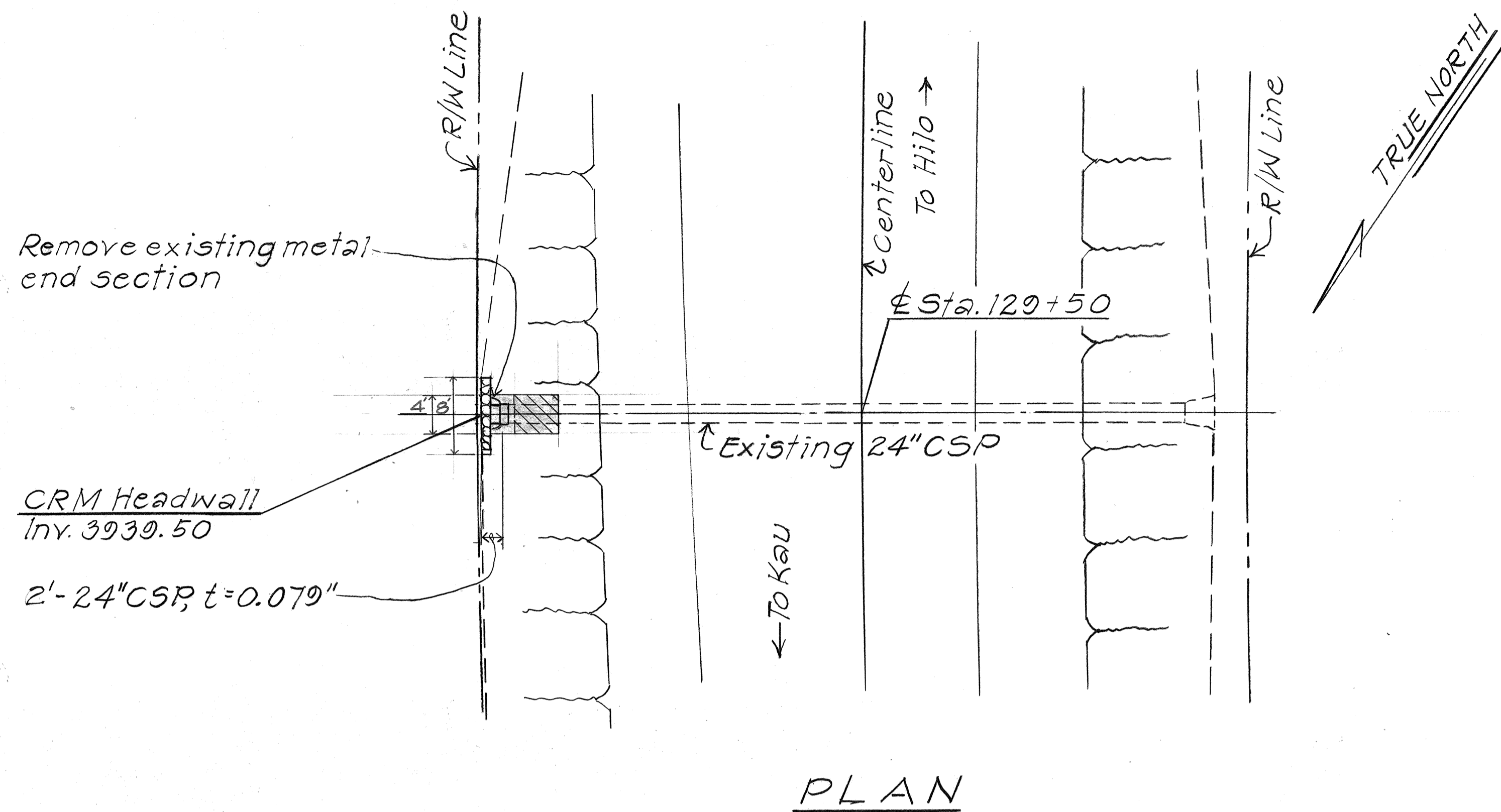


FED. ROAD DIST. NO.	STATE	FED. AID PROJ. NO.	FISCAL YEAR	SHEET NO.	TOTAL SHEETS
HAWAII	HAW.	FLH-011-2(18)	1986	9	18



DETAIL OF DRAINAGE FACILITY AT STA. 129+50 LT.

Scale: 1" = 10'

GENERAL NOTES:

- Existing drainage system will be functional at all times during construction. Contractor is to furnish materials, equipment, labor, tools and incidentals necessary to accomplish maintenance of flow, the cost of which shall be incidental to the various contract items.
- Demolishing and removing a portion or the entire existing structure shall not be paid for separately, but shall be considered incidental to the various contract items.

LEGEND

- BACKFILL
- REMOVE UNSUITABLE MATERIAL

DETAIL OF DRAINAGE FACILITY AT STA. 141+50 LT.

Scale: 1" = 10'

STATE OF HAWAII
DEPARTMENT OF TRANSPORTATION
HIGHWAYS DIVISION

DRAINAGE DETAILS

HBR, Intersection Improvements
at Hawaii Volcanoes National Park
Headquarters Access Road
FAP No. FLH-011-2(18)
Scale: As Noted Date: June 1986

SHEET NO. H-1 OF 1 SHEETS

SURVEY PLOTTED BY	DATE
DRAWN BY	
FRAGGED BY	
QUANTITIES BY	
CHECKED BY	
ORIGINAL PLAN	
NOTE BOOK	
No.	