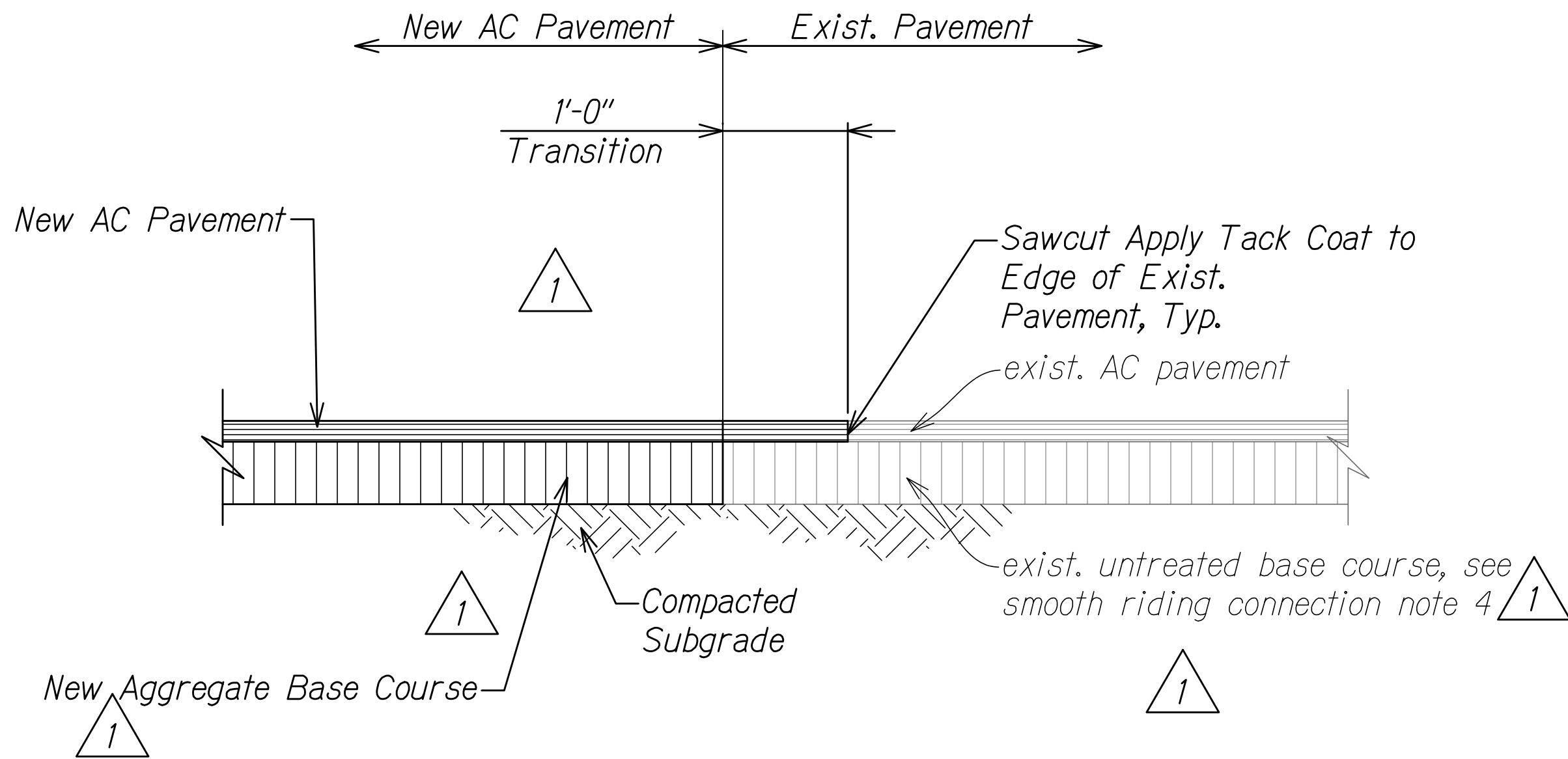


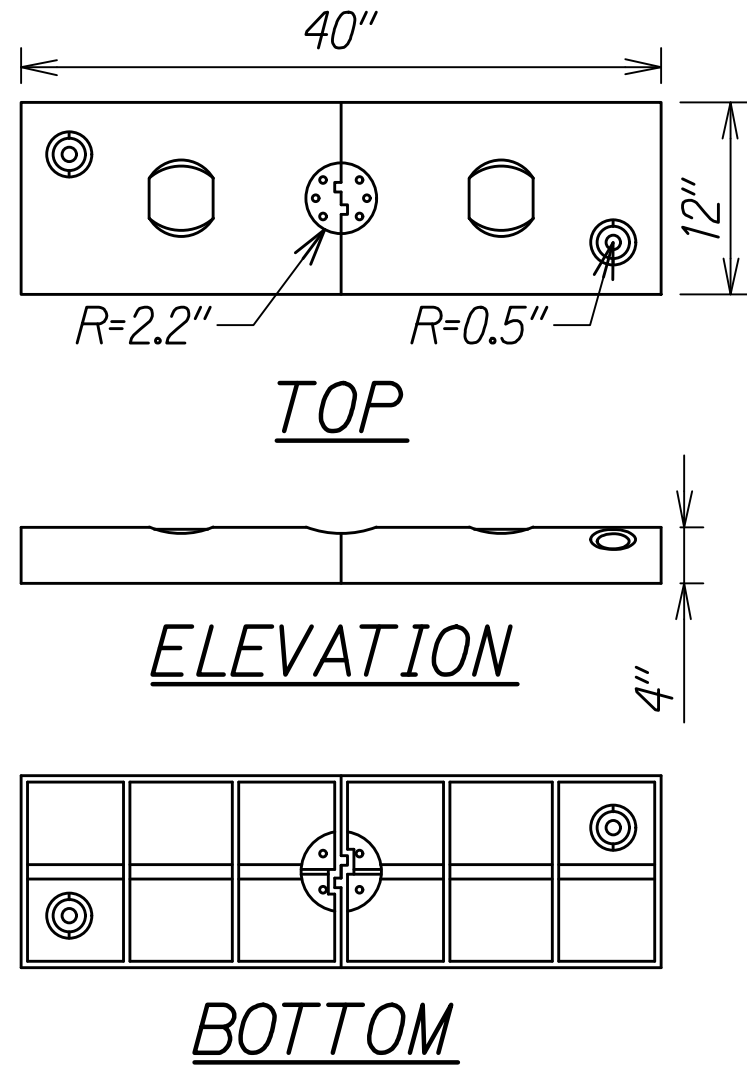
FED. ROAD DIST. NO.	STATE	PROJ. NO.	FISCAL YEAR	SHEET NO.	TOTAL SHEETS
HAWAII	HAW.	11N-01-19M	2019	ADD. 11	26

- SMOOTH RIDING CONNECTION NOTES:**
- Pavement structure shall be restored to equal or better than exist. in thickness and quality.
 - For new AC pavement section, see detail this Sht.
 - Smooth riding connection pavement surface shall be tested by the Engineer using a 10' straight edge placed perpendicular to the joint at various locations. Pavement surface variation between the testing edge and the bearing points shall not exceed 3/16 inch at any point.
 - Recompact existing base course when the new base is installed to the same level.



SMOOTH RIDING CONNECTION

Scale: NTS

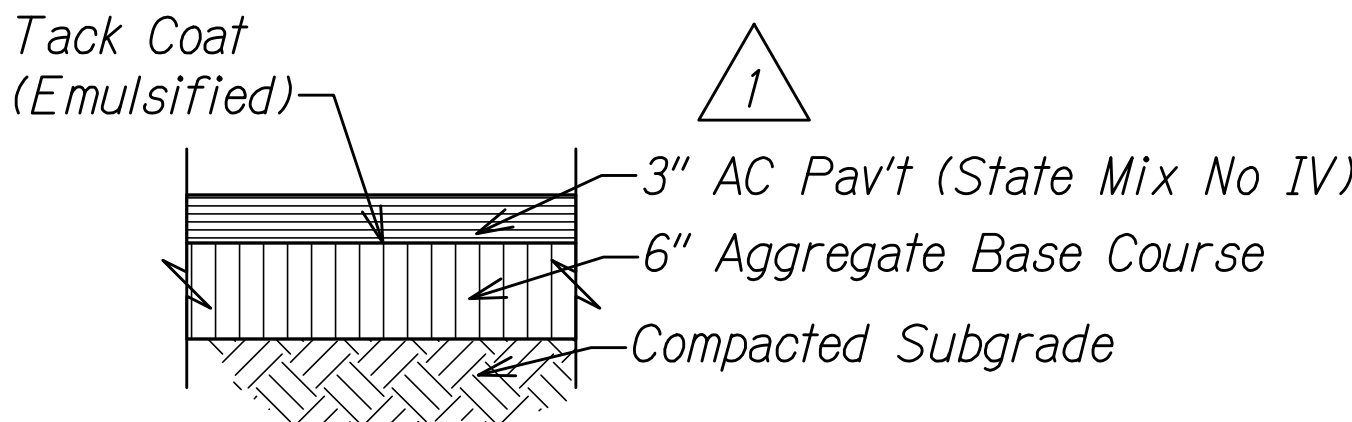
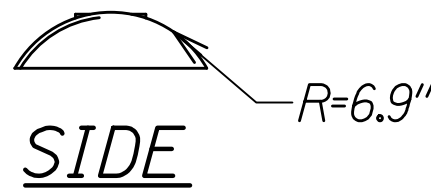


BOLT DOWN CURB DETAIL

Scale: NTS

BOLT DOWN CURB NOTES:

- Bolt down curbing system color shall be ~~yellow~~ white.
- Bolt down curbing system shall be crashworthiness tested to 2016 MASH Standards.
- Install using 1/2" x 4" concrete screw anchors or 5/8" x 5" plastic sleeve anchors.
- Curbs shall have a 12" gap between every 40" unit for drainage.
- Provide end cap at NB Sta. 1122+41±.



AC PAVEMENT SECTION

Scale: NTS

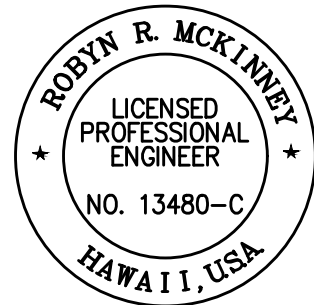
DELINEATOR NOTES:

- Installation to be completed in accordance with Manufacturer's Specifications.
- Post shall be constructed of flexible polyethylene plastic that is resistant to: Ultraviolet Light, Ozone, and Hydrocarbons.
- Unit shall have a reactive spring assembly tested to 145 lb. tension with stainless steel cable.
- Delineators shall meet MUTCD Specifications.
- Sign shall have an "Anti-twist" feature that assures the sign will return to its original position after impact.
- Sign may have a "Quick Release" feature which allows the sign to be removed from the base without the use of tools.

DOUBLE SIDED DELINEATOR POST DETAIL

Scale: NTS

LEGEND FOR AS-BUILT POSTINGS	
	Squiggly line for as-built deletion
	Double line for as-built deletion
Roadway	Text for as-built posting



THIS WORK WAS PREPARED BY ME OR UNDER MY SUPERVISION AND CONSTRUCTION OF THIS PROJECT WILL BE UNDER MY OBSERVATION.
SIGNATURE: Robyn McKinney
EXPIRATION DATE OF THE LICENSE: APRIL 30, 2020

6/10/19	Added Details and Notes for Bolt Down Curb and Delineators; Renamed and Revised Notes in Smooth RIding Connection Detail, Updated Details for New and Updated Existing Pavement Sections
DATE	REVISION
STATE OF HAWAII DEPARTMENT OF TRANSPORTATION HIGHWAYS DIVISION	
SITE DETAILS	
VOLCANO ROAD TEMPORARY SIGNAL INSTALLATION	
At Kipimana Street	
Project No. 11N-01-19M	
Scale: Not to Scale	Date: April, 2019
SHEET No. 1 OF 1 SHEETS	

"AS-BUILT"

ADD. 11