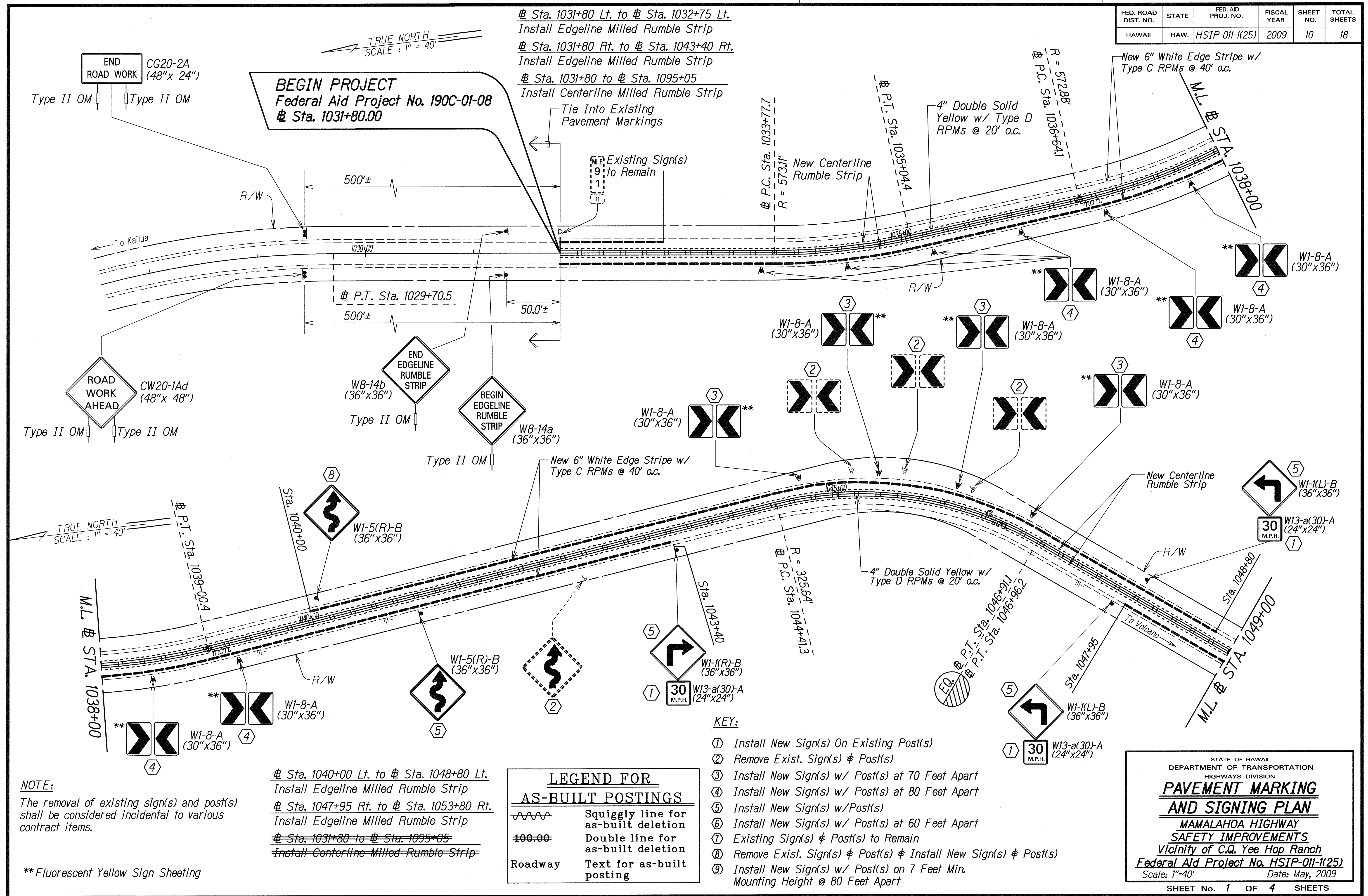


FED. ROAD DIST. NO.	STATE	FED. AID PROJ. NO.	FISCAL YEAR	SHEET NO.	TOTAL SHEETS
HAWAII	HAW.	HSIP-011-1(25)	2009	10	18



NOTE:
The removal of existing sign(s) and post(s) shall be considered incidental to various contract items.

**Fluorescent Yellow Sign Sheeting

Sta. 1040+00 Lt. to Sta. 1048+80 Lt.
Install Edgeline Milled Rumble Strip
Sta. 1047+95 Rt. to Sta. 1053+80 Rt.
Install Edgeline Milled Rumble Strip
Sta. 1031+80 to Sta. 1095+05
Install Centerline Milled Rumble Strip

LEGEND FOR AS-BUILT POSTINGS

	Squiggly line for as-built deletion
	Double line for as-built deletion
Roadway	Text for as-built posting

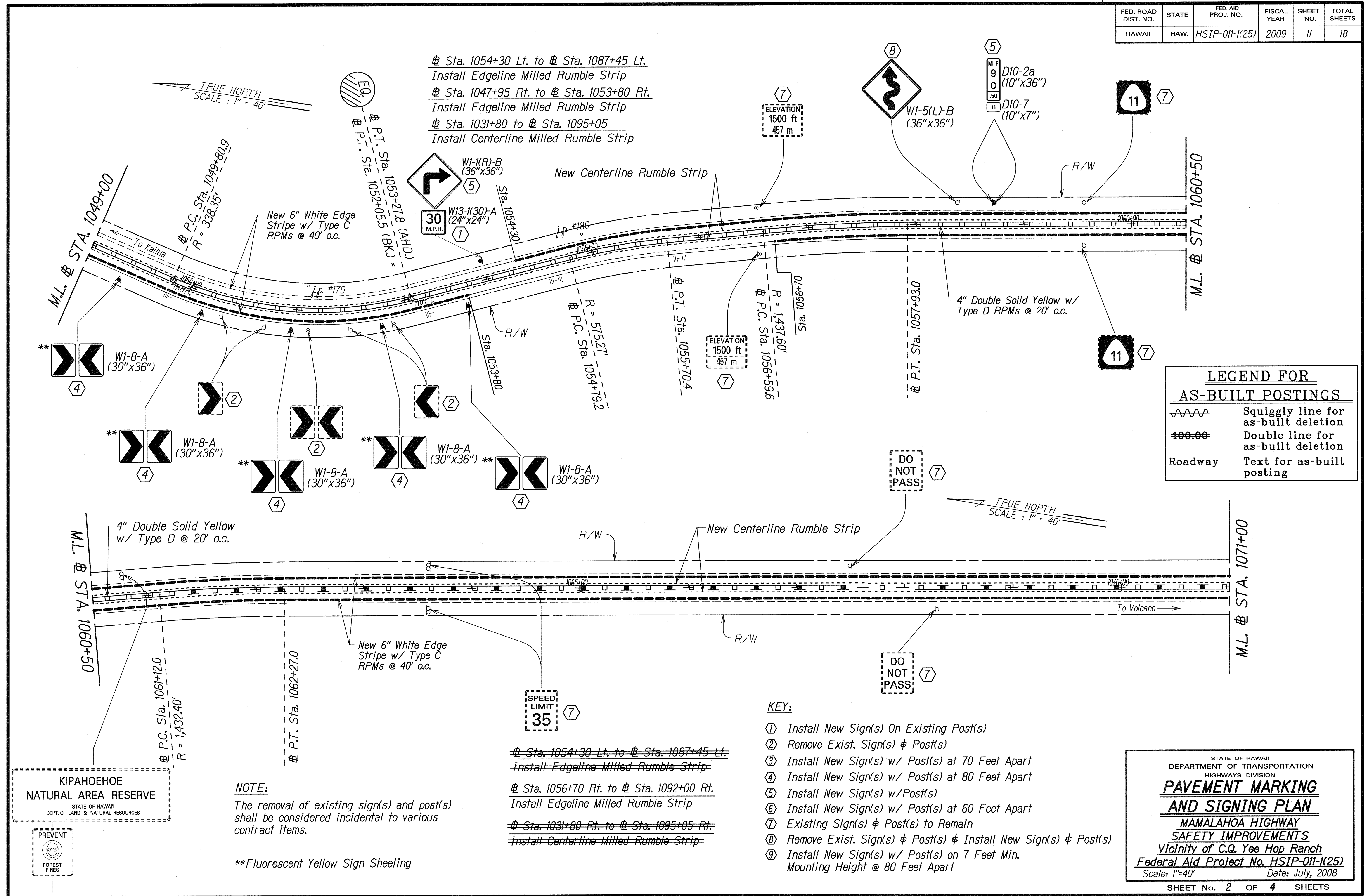
- KEY:**
- Install New Sign(s) On Existing Post(s)
 - Remove Exist. Sign(s) & Post(s)
 - Install New Sign(s) w/ Post(s) at 70 Feet Apart
 - Install New Sign(s) w/ Post(s) at 80 Feet Apart
 - Install New Sign(s) w/ Post(s)
 - Install New Sign(s) w/ Post(s) at 60 Feet Apart
 - Existing Sign(s) & Post(s) to Remain
 - Remove Exist. Sign(s) & Post(s) & Install New Sign(s) & Post(s)
 - Install New Sign(s) w/ Post(s) on 7 Feet Min. Mounting Height @ 80 Feet Apart

DATE	
SURVEY PLOTTED BY	
DRAWN BY	
DESIGNED BY	
QUANTITIES BY	
CHECKED BY	
ORIGINAL PLAN	
NOTE BOOK	
FILE	
DATE	

STATE OF HAWAII
DEPARTMENT OF TRANSPORTATION
HIGHWAYS DIVISION
PAVEMENT MARKING AND SIGNING PLAN
MAMALAHOA HIGHWAY
SAFETY IMPROVEMENTS
Vicinity of C.Q. Yee Hop Ranch
Federal Aid Project No. HSIP-011-1(25)
Scale: 1"=40' Date: May, 2009
SHEET No. 1 OF 4 SHEETS

"AS-BUILT"

FED. ROAD DIST. NO.	STATE	FED. AID PROJ. NO.	FISCAL YEAR	SHEET NO.	TOTAL SHEETS
HAWAII	HAW.	HSIP-011-1(25)	2009	11	18



@ Sta. 1054+30 Lt. to @ Sta. 1087+45 Lt.
 Install Edgeline Milled Rumble Strip
 @ Sta. 1047+95 Rt. to @ Sta. 1053+80 Rt.
 Install Edgeline Milled Rumble Strip
 @ Sta. 1031+80 to @ Sta. 1095+05
 Install Centerline Milled Rumble Strip

LEGEND FOR AS-BUILT POSTINGS

	Squiggly line for as-built deletion
	Double line for as-built deletion
Roadway	Text for as-built posting

- KEY:**
- ① Install New Sign(s) On Existing Post(s)
 - ② Remove Exist. Sign(s) & Post(s)
 - ③ Install New Sign(s) w/ Post(s) at 70 Feet Apart
 - ④ Install New Sign(s) w/ Post(s) at 80 Feet Apart
 - ⑤ Install New Sign(s) w/ Post(s)
 - ⑥ Install New Sign(s) w/ Post(s) at 60 Feet Apart
 - ⑦ Existing Sign(s) & Post(s) to Remain
 - ⑧ Remove Exist. Sign(s) & Post(s) & Install New Sign(s) & Post(s)
 - ⑨ Install New Sign(s) w/ Post(s) on 7 Feet Min. Mounting Height @ 80 Feet Apart

~~@ Sta. 1054+30 Lt. to @ Sta. 1087+45 Lt.
 Install Edgeline Milled Rumble Strip~~
~~@ Sta. 1056+70 Rt. to @ Sta. 1092+00 Rt.
 Install Edgeline Milled Rumble Strip~~
~~@ Sta. 1031+80 Rt. to @ Sta. 1095+05 Rt.
 Install Centerline Milled Rumble Strip~~

NOTE:
 The removal of existing sign(s) and post(s) shall be considered incidental to various contract items.

**Fluorescent Yellow Sign Sheeting

KIPAHOEHOE NATURAL AREA RESERVE
 STATE OF HAWAII
 DEPT. OF LAND & NATURAL RESOURCES



SURVEY PLOTTED BY	DATE
DRAWN BY	
TRACED BY	
NOTE BOOK	
QUANTITIES BY	
CHECKED BY	

STATE OF HAWAII
 DEPARTMENT OF TRANSPORTATION
 HIGHWAYS DIVISION
PAVEMENT MARKING AND SIGNING PLAN
 MAMALAHOA HIGHWAY
 SAFETY IMPROVEMENTS
 Vicinity of C.Q. Yee Hop Ranch
 Federal Aid Project No. HSIP-011-1(25)
 Scale: 1"=40' Date: July, 2008

"AS-BUILT"

FED. ROAD DIST. NO.	STATE	FED. AID PROJ. NO.	FISCAL YEAR	SHEET NO.	TOTAL SHEETS
HAWAII	HAW.	HSIP-011-1(25)	2009	12	18

LEGEND FOR AS-BUILT POSTINGS

~~~~~ Squiggly line for as-built deletion

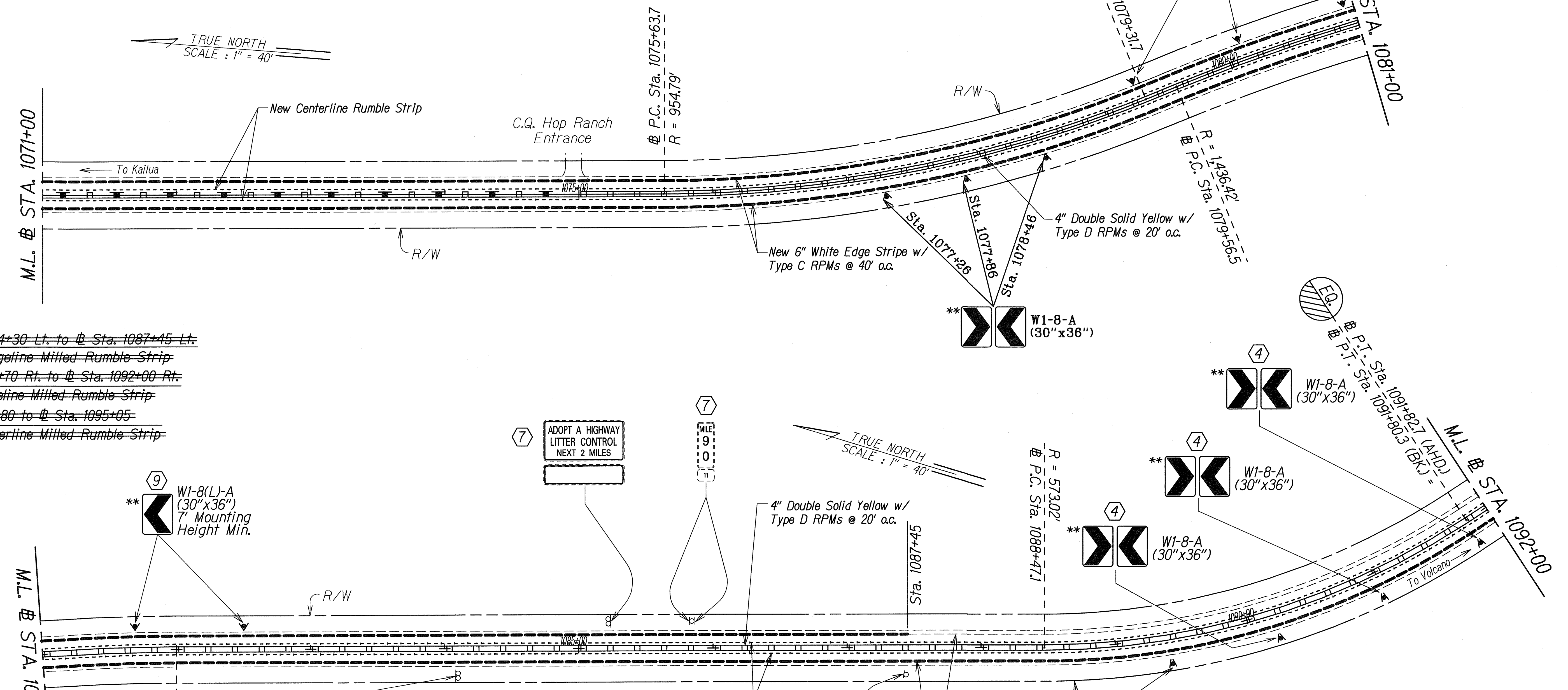
==== Double line for as-built deletion

Roadway Text for as-built posting

Sta. 1054+30 Lt. to Sta. 1087+45 Lt.  
Install Edgeline Milled Rumble Strip

Sta. 1056+70 Rt. to Sta. 1092+00 Rt.  
Install Edgeline Milled Rumble Strip

Sta. 1031+80 to Sta. 1095+05  
Install Centerline Milled Rumble Strip



~~Sta. 1054+30 Lt. to Sta. 1087+45 Lt.  
Install Edgeline Milled Rumble Strip~~

~~Sta. 1056+70 Rt. to Sta. 1092+00 Rt.  
Install Edgeline Milled Rumble Strip~~

~~Sta. 1031+80 to Sta. 1095+05  
Install Centerline Milled Rumble Strip~~

**NOTE:**  
The removal of existing sign(s) and post(s) shall be considered incidental to various contract items.

- KEY:**
- Install New Sign(s) On Existing Post(s)
  - Remove Exist. Sign(s) & Post(s)
  - Install New Sign(s) w/ Post(s) at 70 Feet Apart
  - Install New Sign(s) w/ Post(s) at 80 Feet Apart
  - Install New Sign(s) w/ Post(s)
  - Install New Sign(s) w/ Post(s) at 60 Feet Apart
  - Existing Sign(s) & Post(s) to Remain
  - Remove Exist. Sign(s) & Post(s) & Install New Sign(s) & Post(s)
  - Install New Sign(s) w/ Post(s) on 7 Feet Min. Mounting Height @ 80 Feet Apart

|                   |  |
|-------------------|--|
| DATE              |  |
| SURVEY PLOTTED BY |  |
| DRAWN BY          |  |
| TRACED BY         |  |
| NOTE BOOK         |  |
| QUANTITIES BY     |  |
| CHECKED BY        |  |
| ORIGINAL PLAN     |  |
| NOTE BOOK         |  |
| QUANTITIES BY     |  |
| CHECKED BY        |  |

STATE OF HAWAII  
DEPARTMENT OF TRANSPORTATION  
HIGHWAYS DIVISION

**PAVEMENT MARKING AND SIGNING PLAN**

MAMALAHOA HIGHWAY  
SAFETY IMPROVEMENTS  
Vicinity of C.Q. Yee Hop Ranch  
Federal Aid Project No. HSIP-011-1(25)

Scale: 1"=40' Date: July, 2008

SHEET No. 3 OF 4 SHEETS

| FED. ROAD DIST. NO. | STATE | FED. AID PROJ. NO. | FISCAL YEAR | SHEET NO. | TOTAL SHEETS |
|---------------------|-------|--------------------|-------------|-----------|--------------|
| HAWAII              | HAW.  | HSIP-011-1(25)     | 2009        | 13        | 18           |

**LEGEND FOR AS-BUILT POSTINGS**

~~~~~ Squiggly line for as-built deletion

==00.00== Double line for as-built deletion

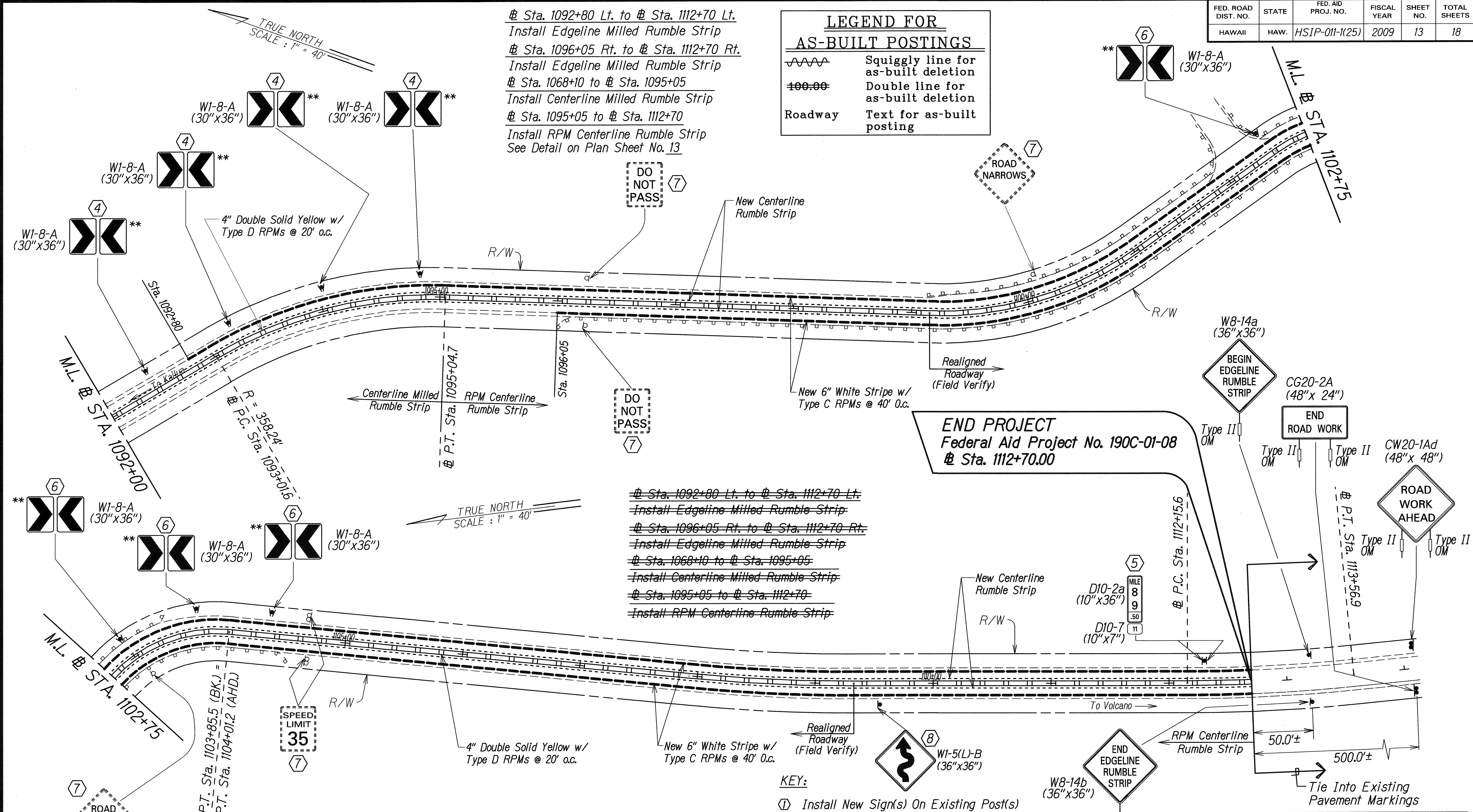
Roadway Text for as-built posting

Sta. 1092+80 Lt. to Sta. 1112+70 Lt.
Install Edgeline Milled Rumble Strip

Sta. 1096+05 Rt. to Sta. 1112+70 Rt.
Install Edgeline Milled Rumble Strip

Sta. 1068+10 to Sta. 1095+05
Install Centerline Milled Rumble Strip

Sta. 1095+05 to Sta. 1112+70
Install RPM Centerline Rumble Strip
See Detail on Plan Sheet No. 13

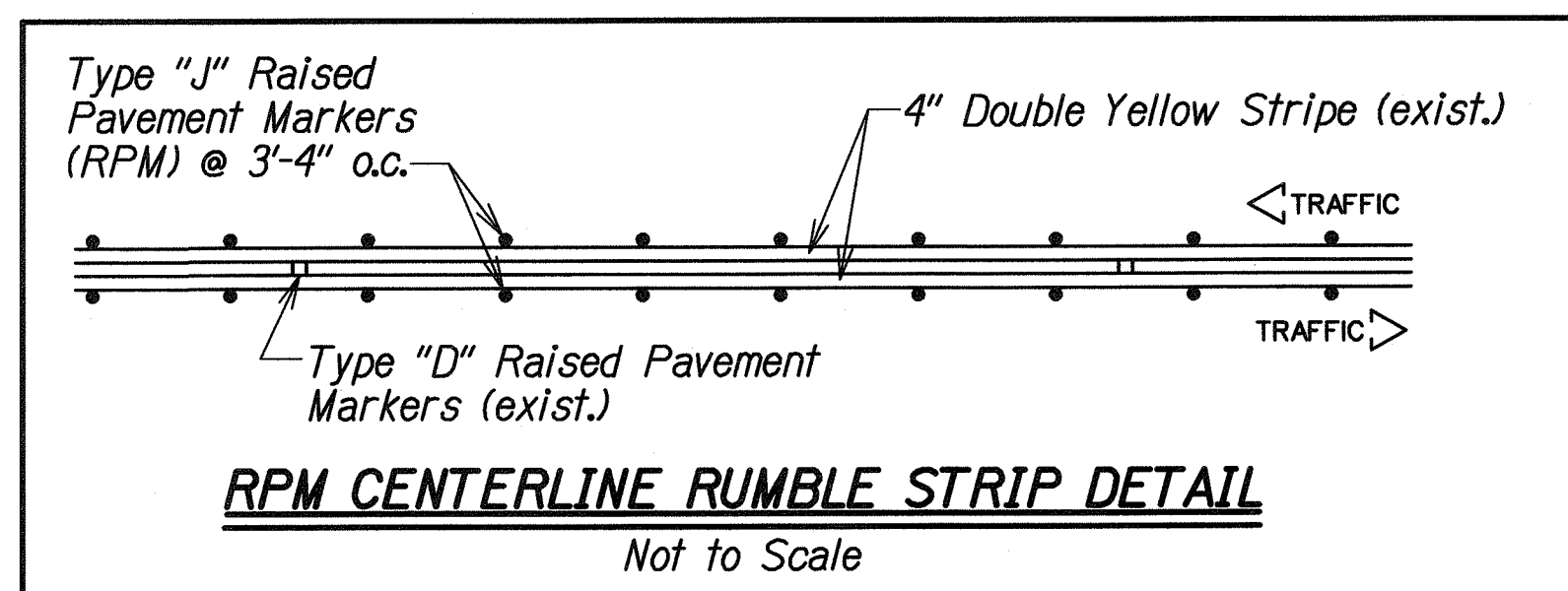


~~Sta. 1092+80 Lt. to Sta. 1112+70 Lt.
Install Edgeline Milled Rumble Strip~~

~~Sta. 1096+05 Rt. to Sta. 1112+70 Rt.
Install Edgeline Milled Rumble Strip~~

~~Sta. 1068+10 to Sta. 1095+05
Install Centerline Milled Rumble Strip~~

~~Sta. 1095+05 to Sta. 1112+70
Install RPM Centerline Rumble Strip~~



- KEY:**
- Install New Sign(s) On Existing Post(s)
 - Remove Exist. Sign(s) & Post(s)
 - Install New Sign(s) w/ Post(s) at 70 Feet Apart
 - Install New Sign(s) w/ Post(s) at 80 Feet Apart
 - Install New Sign(s) w/ Post(s)
 - Install New Sign(s) w/ Post(s) at 60 Feet Apart
 - Existing Sign(s) & Post(s) to Remain
 - Remove Exist. Sign(s) & Post(s) & Install New Sign(s) & Post(s)
 - Install New Sign(s) w/ Post(s) on 7 Feet Min. Mounting Height @ 80 Feet Apart

NOTE:
The removal of existing sign(s) and post(s) shall be considered incidental to various contract items.

**Fluorescent Yellow Sign Sheeting

STATE OF HAWAII
DEPARTMENT OF TRANSPORTATION
HIGHWAYS DIVISION

PAVEMENT MARKING AND SIGNING PLAN

MAMALAHOA HIGHWAY
SAFETY IMPROVEMENTS
Vicinity of C.G. Yee Hop Ranch
Federal Aid Project No. HSIP-011-1(25)
Scale: 1"=40' Date: May, 2009

SHEET No. 4 OF 4 SHEETS

| |
|--------------------------|
| DATE: _____ |
| SURVEY PLOTTED BY: _____ |
| PLAN: _____ |
| DRAWN BY: _____ |
| TRACED BY: _____ |
| NOTE BOOK: _____ |
| QUANTITIES BY: _____ |
| CHECKED BY: _____ |
| No. _____ |