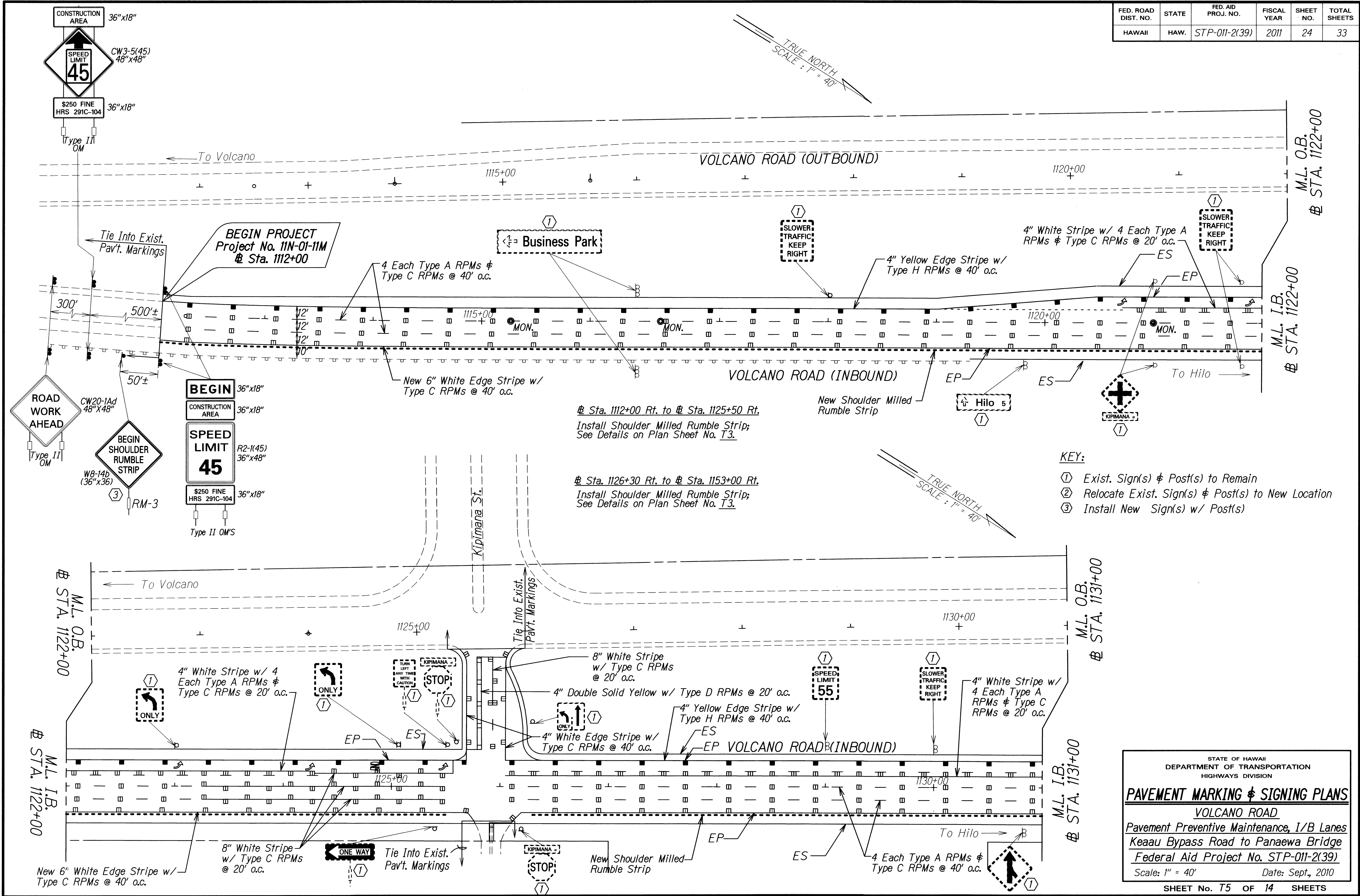


FED. ROAD DIST. NO.	STATE	FED. AID PROJ. NO.	FISCAL YEAR	SHEET NO.	TOTAL SHEETS
HAWAII	HAW.	STP-011-2(39)	2011	24	33



- KEY:**
- ① Exist. Sign(s) & Post(s) to Remain
 - ② Relocate Exist. Sign(s) & Post(s) to New Location
 - ③ Install New Sign(s) w/ Post(s)

SURVEY PLOTTED BY	DATE
DESIGNED BY	
TRACED BY	
DESIGNED BY	
QUANTITIES BY	
CHECKED BY	
ORIGINAL PLAN	
NOTE BOOK	
NO. _____	

STATE OF HAWAII
DEPARTMENT OF TRANSPORTATION
HIGHWAYS DIVISION

PAVEMENT MARKING & SIGNING PLANS

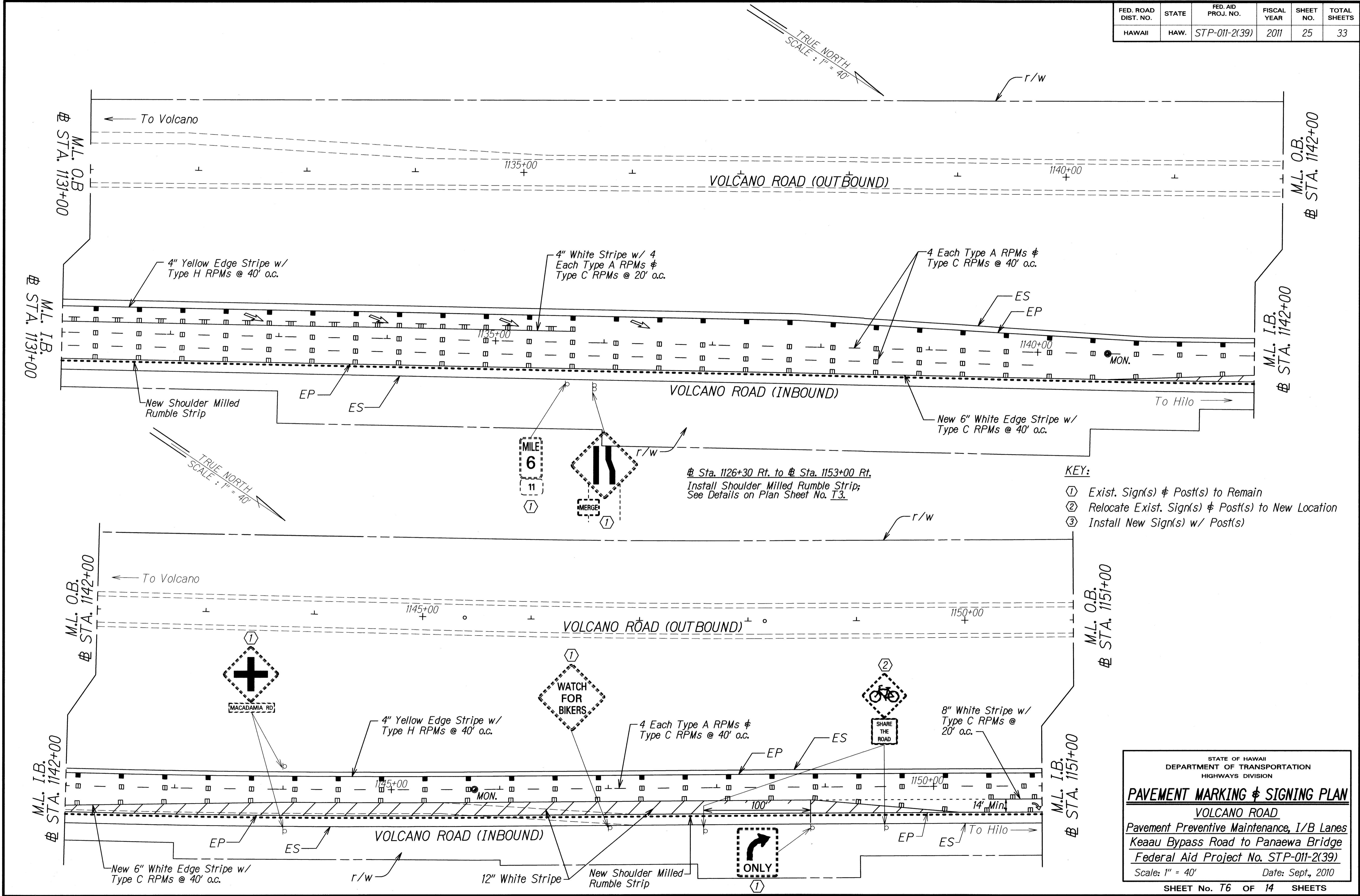
VOLCANO ROAD

Pavement Preventive Maintenance, I/B Lanes
Keaau Bypass Road to Panaewa Bridge
Federal Aid Project No. STP-011-2(39)

Scale: 1" = 40' Date: Sept., 2010

SHEET No. T5 OF 14 SHEETS

FED. ROAD DIST. NO.	STATE	FED. AID PROJ. NO.	FISCAL YEAR	SHEET NO.	TOTAL SHEETS
HAWAII	HAW.	STP-011-2(39)	2011	25	33



- KEY:**
- ① Exist. Sign(s) & Post(s) to Remain
 - ② Relocate Exist. Sign(s) & Post(s) to New Location
 - ③ Install New Sign(s) w/ Post(s)

From Sta. 1126+30 Rt. to Sta. 1153+00 Rt.
Install Shoulder Milled Rumble Strip;
See Details on Plan Sheet No. T3.

SURVEY PLOTTED BY	DATE
DRAWN BY	
DESIGNED BY	
QUANTITIES BY	
CHECKED BY	
ORIGINAL PLAN	
NOTE BOOK	
8/16/02/2/2/11	

STATE OF HAWAII
DEPARTMENT OF TRANSPORTATION
HIGHWAYS DIVISION

PAVEMENT MARKING & SIGNING PLAN

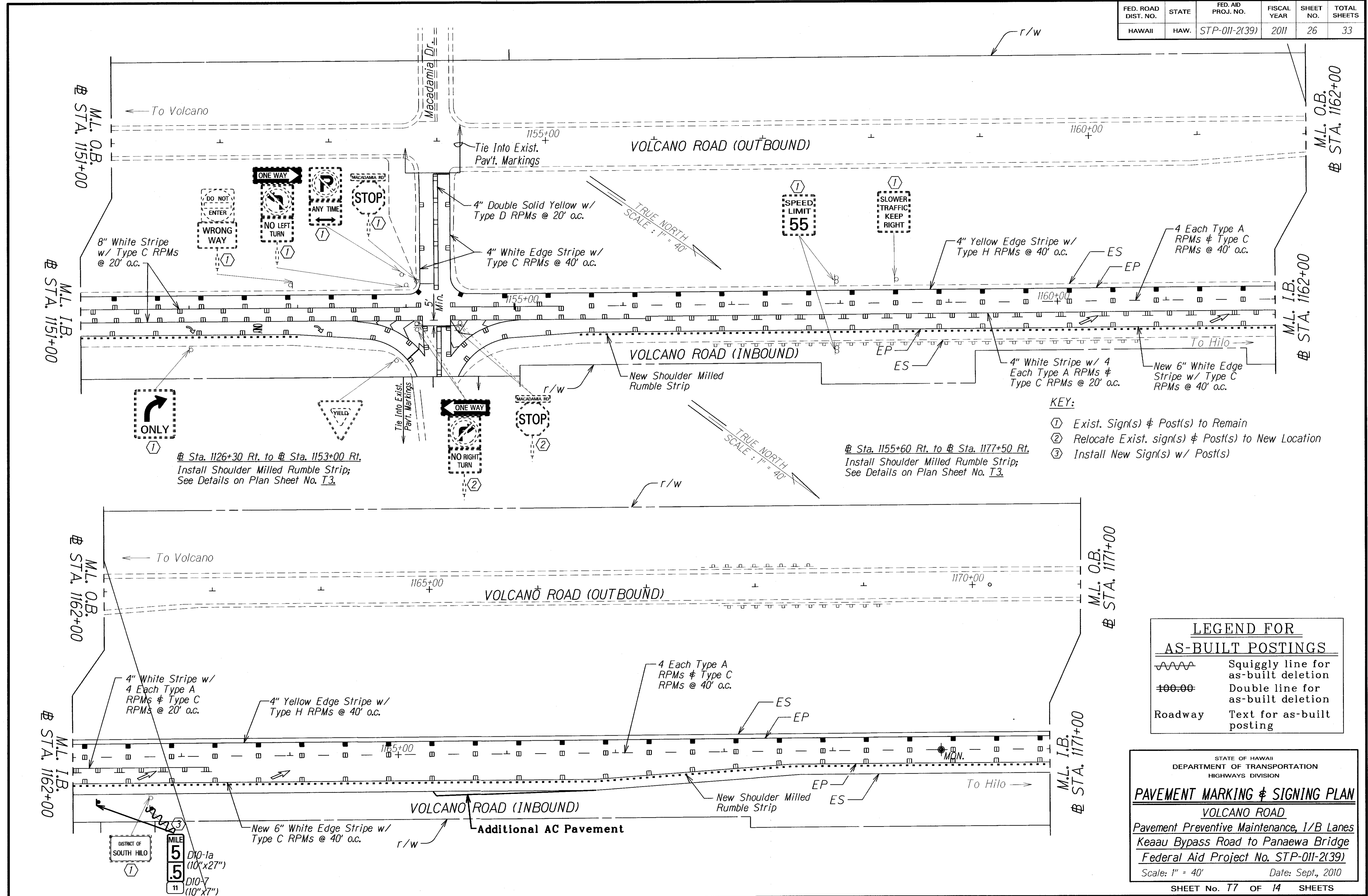
VOLCANO ROAD

Pavement Preventive Maintenance, I/B Lanes
Keaau Bypass Road to Panaewa Bridge
Federal Aid Project No. STP-011-2(39)

Scale: 1" = 40' Date: Sept., 2010

SHEET No. T6 OF 14 SHEETS

FED. ROAD DIST. NO.	STATE	FED. AID PROJ. NO.	FISCAL YEAR	SHEET NO.	TOTAL SHEETS
HAWAII	HAW.	STP-011-2(39)	2011	26	33



- KEY:**
- ① Exist. Sign(s) & Post(s) to Remain
 - ② Relocate Exist. sign(s) & Post(s) to New Location
 - ③ Install New Sign(s) w/ Post(s)

Sta. 1126+30 Rt. to Sta. 1153+00 Rt.
 Install Shoulder Milled Rumble Strip;
 See Details on Plan Sheet No. T3.

Sta. 1155+60 Rt. to Sta. 1177+50 Rt.
 Install Shoulder Milled Rumble Strip;
 See Details on Plan Sheet No. T3.

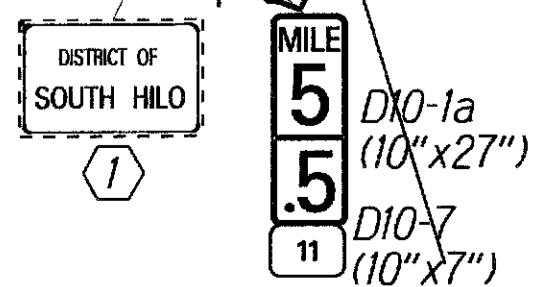
LEGEND FOR AS-BUILT POSTINGS

	Squiggly line for as-built deletion
	Double line for as-built deletion
Roadway	Text for as-built posting

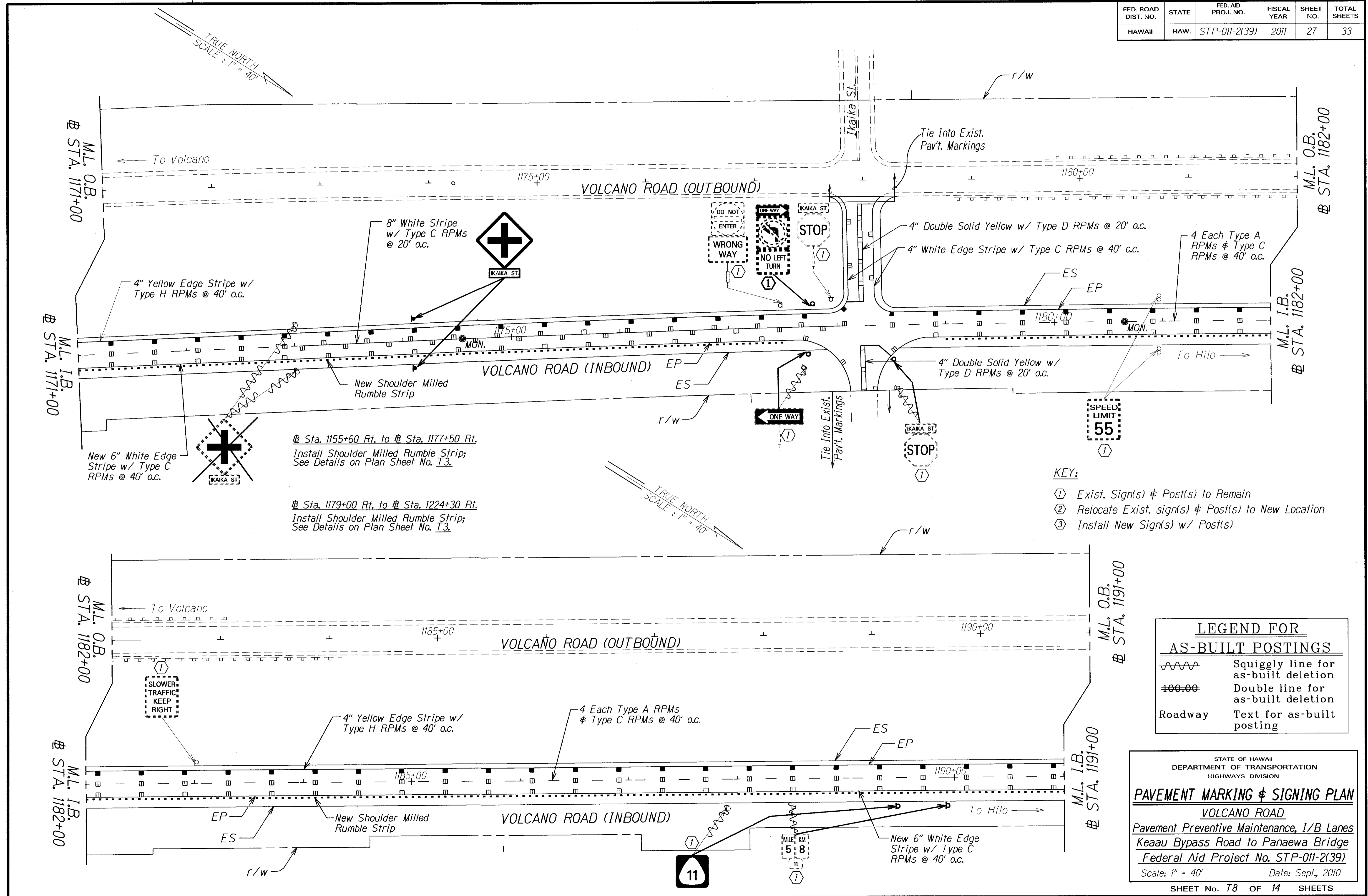
STATE OF HAWAII
 DEPARTMENT OF TRANSPORTATION
 HIGHWAYS DIVISION

PAVEMENT MARKING & SIGNING PLAN
 VOLCANO ROAD
 Pavement Preventive Maintenance, 1/2 Lanes
 Keaau Bypass Road to Panaewa Bridge
 Federal Aid Project No. STP-011-2(39)
 Scale: 1" = 40' Date: Sept., 2010

SURVEY PLOTTED BY	DATE
DRAWN BY	
DESIGNED BY	
CHECKED BY	
ORIGINAL PLAN	
NOTE BOOK	
NO. 5010103	



FED. ROAD DIST. NO.	STATE	FED. AID PROJ. NO.	FISCAL YEAR	SHEET NO.	TOTAL SHEETS
HAWAII	HAW.	STP-011-2(39)	2011	27	33



- KEY:**
- ① Exist. Sign(s) & Post(s) to Remain
 - ② Relocate Exist. sign(s) & Post(s) to New Location
 - ③ Install New Sign(s) w/ Post(s)

LEGEND FOR AS-BUILT POSTINGS

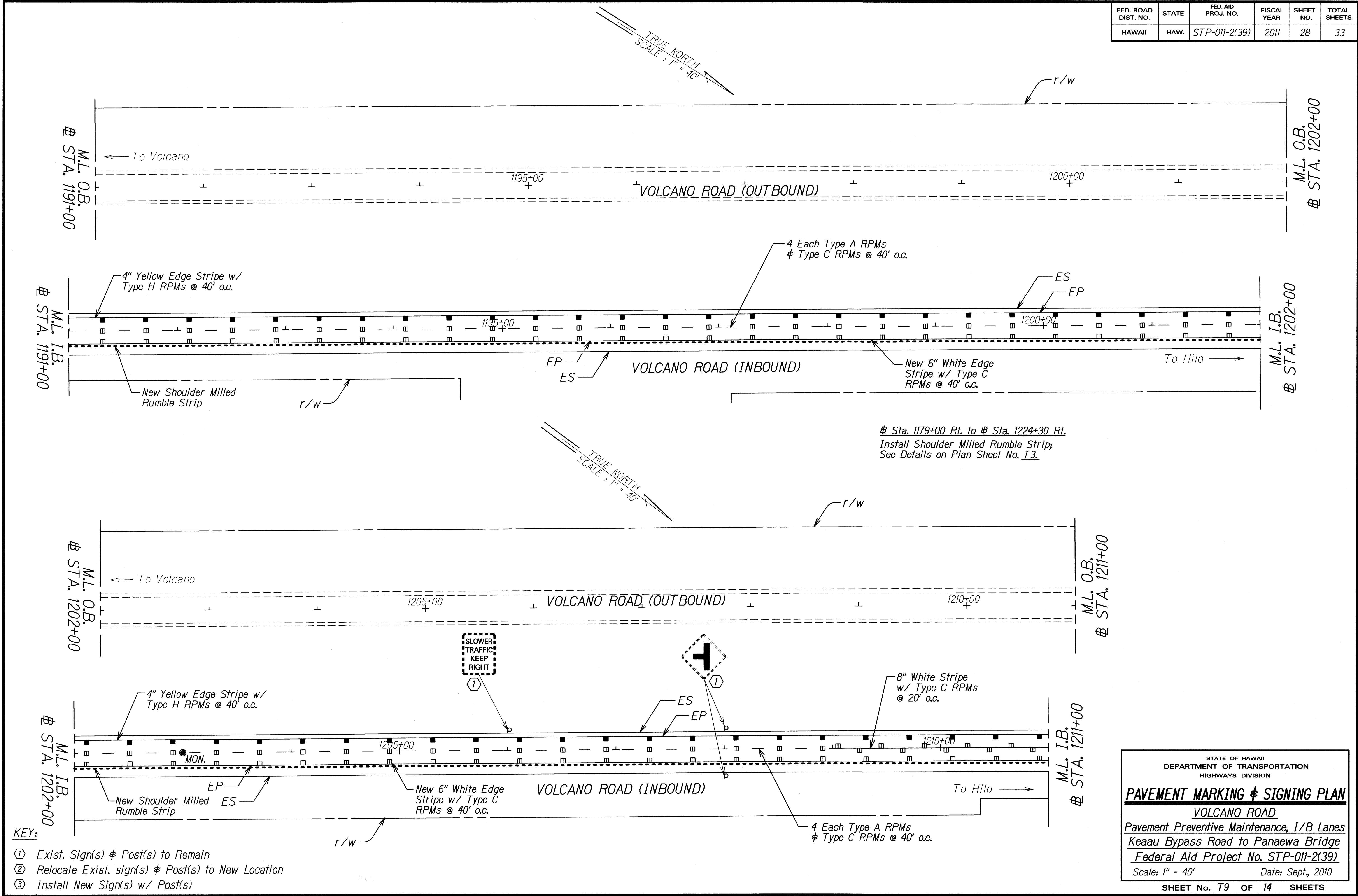
	Squiggly line for as-built deletion
	Double line for as-built deletion
Roadway	Text for as-built posting

STATE OF HAWAII
 DEPARTMENT OF TRANSPORTATION
 HIGHWAYS DIVISION

PAVEMENT MARKING & SIGNING PLAN
VOLCANO ROAD
 Pavement Preventive Maintenance, 1/2 Lanes
 Keaau Bypass Road to Panaewa Bridge
 Federal Aid Project No. STP-011-2(39)
 Scale: 1" = 40' Date: Sept., 2010

DATE	
SURVEY PLOTTED BY	
DRAWN BY	
TRACED BY	
DESIGNED BY	
CHECKED BY	
ORIGINAL PLAN	
NOTE BOOK	
DATE	
CHECKED BY	

FED. ROAD DIST. NO.	STATE	FED. AID PROJ. NO.	FISCAL YEAR	SHEET NO.	TOTAL SHEETS
HAWAII	HAW.	STP-011-2(39)	2011	28	33



ORIGINAL PLAN	DATE
DESIGNED BY	
DESIGNED BY	
QUANTITIES BY	
CHECKED BY	

STATE OF HAWAII
DEPARTMENT OF TRANSPORTATION
HIGHWAYS DIVISION

PAVEMENT MARKING & SIGNING PLAN

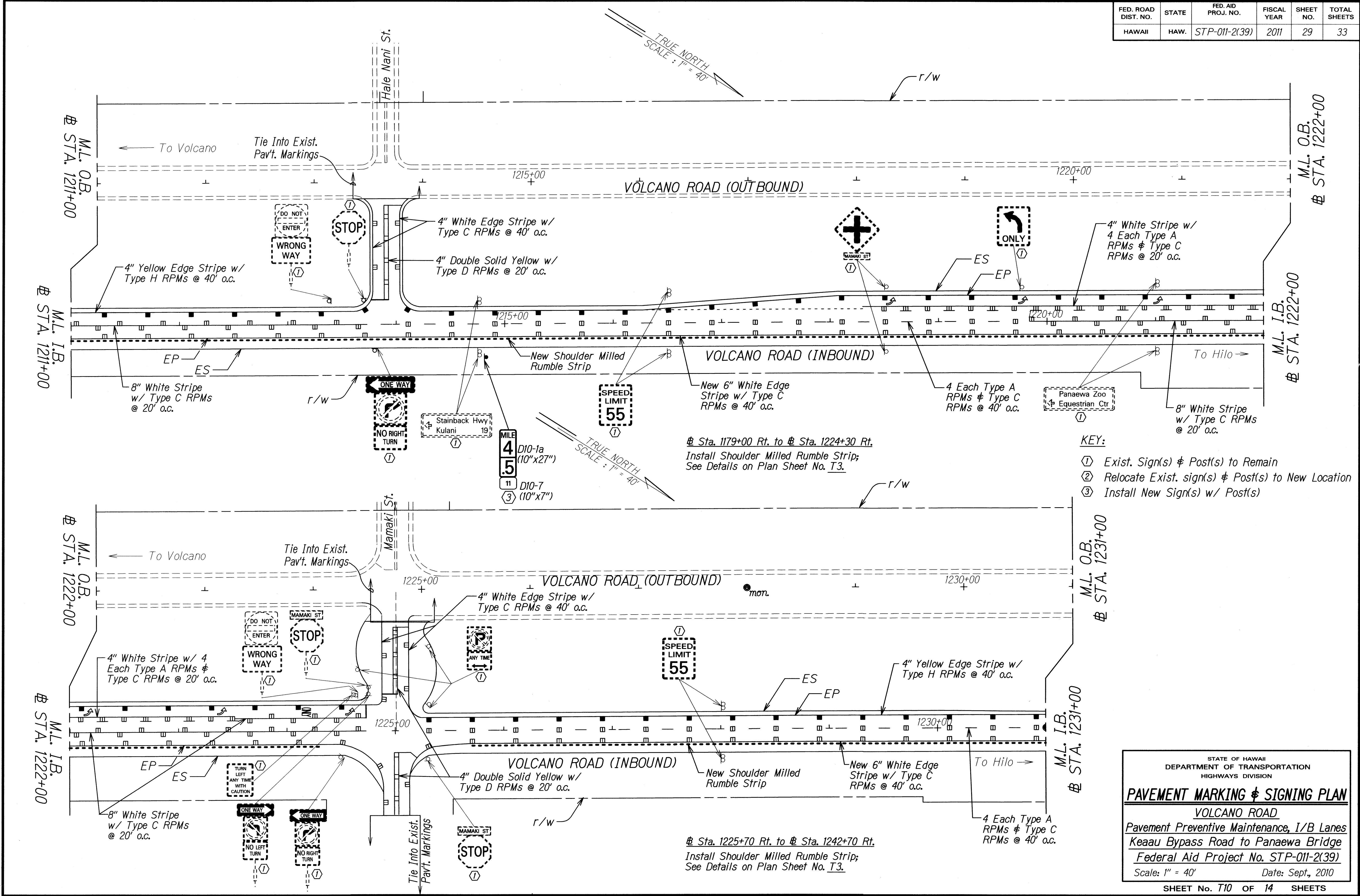
VOLCANO ROAD

Pavement Preventive Maintenance, I/B Lanes
Keaau Bypass Road to Panaewa Bridge
Federal Aid Project No. STP-011-2(39)

Scale: 1" = 40' Date: Sept., 2010

SHEET No. T9 OF 14 SHEETS

FED. ROAD DIST. NO.	STATE	FED. AID PROJ. NO.	FISCAL YEAR	SHEET NO.	TOTAL SHEETS
HAWAII	HAW.	STP-011-2(39)	2011	29	33



- KEY:**
- ① Exist. Sign(s) & Post(s) to Remain
 - ② Relocate Exist. sign(s) & Post(s) to New Location
 - ③ Install New Sign(s) w/ Post(s)

Sta. 1179+00 Rt. to Sta. 1224+30 Rt.
Install Shoulder Milled Rumble Strip;
See Details on Plan Sheet No. T3.

Sta. 1225+70 Rt. to Sta. 1242+70 Rt.
Install Shoulder Milled Rumble Strip;
See Details on Plan Sheet No. T3.

SURVEY PLOTTED BY	DATE
PLAN CHECKED BY	
DESIGNED BY	
QUANTITIES BY	
CHECKED BY	
ORIGINAL PLAN	
NOTE BOOK	
NO.	

STATE OF HAWAII
DEPARTMENT OF TRANSPORTATION
HIGHWAYS DIVISION

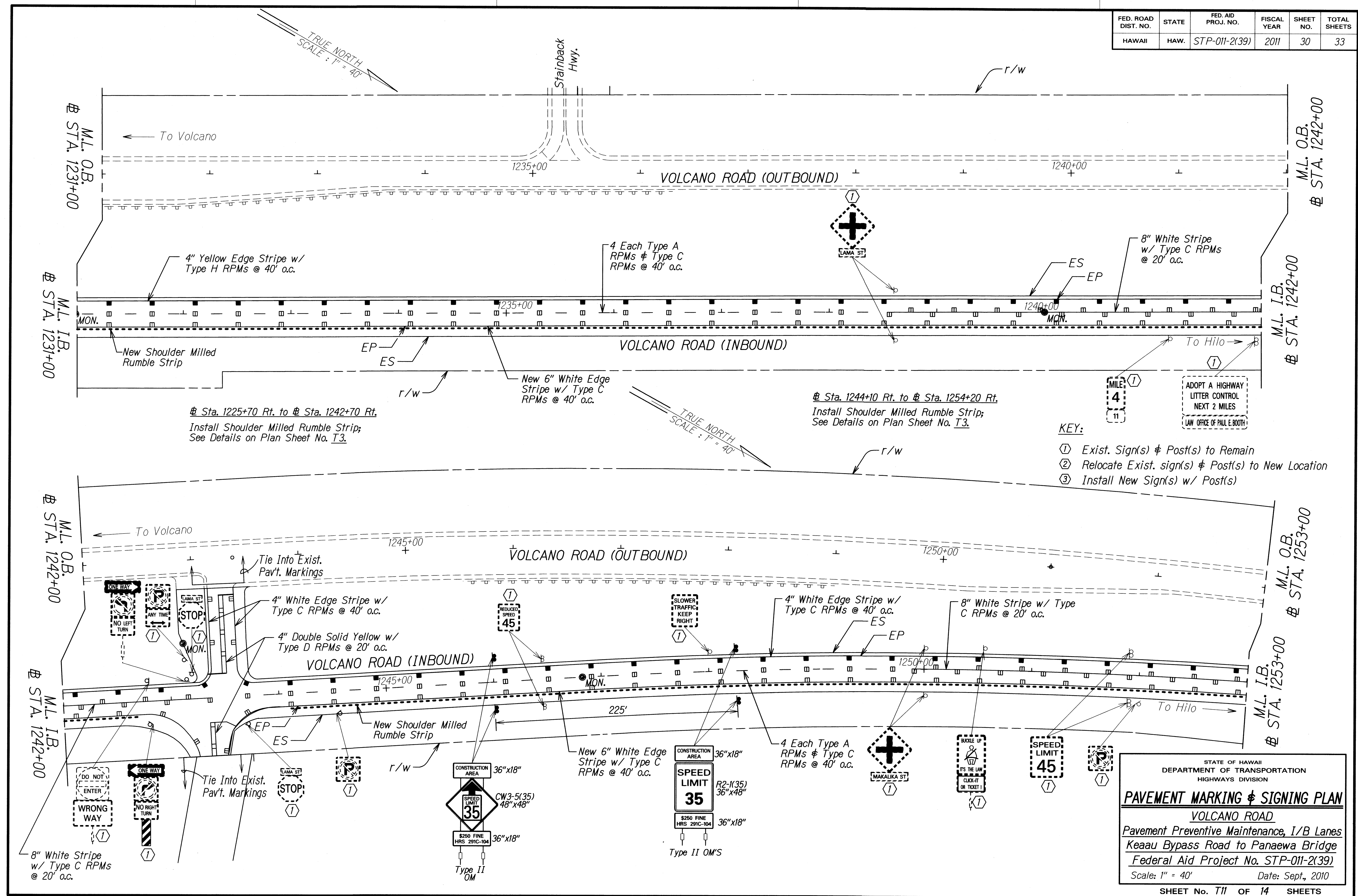
PAVEMENT MARKING & SIGNING PLAN

VOLCANO ROAD

Pavement Preventive Maintenance, I/B Lanes
Keaau Bypass Road to Panaewa Bridge
Federal Aid Project No. STP-011-2(39)
Scale: 1" = 40' Date: Sept., 2010

SHEET No. T10 OF 14 SHEETS

FED. ROAD DIST. NO.	STATE	FED. AID PROJ. NO.	FISCAL YEAR	SHEET NO.	TOTAL SHEETS
HAWAII	HAW.	STP-011-2(39)	2011	30	33

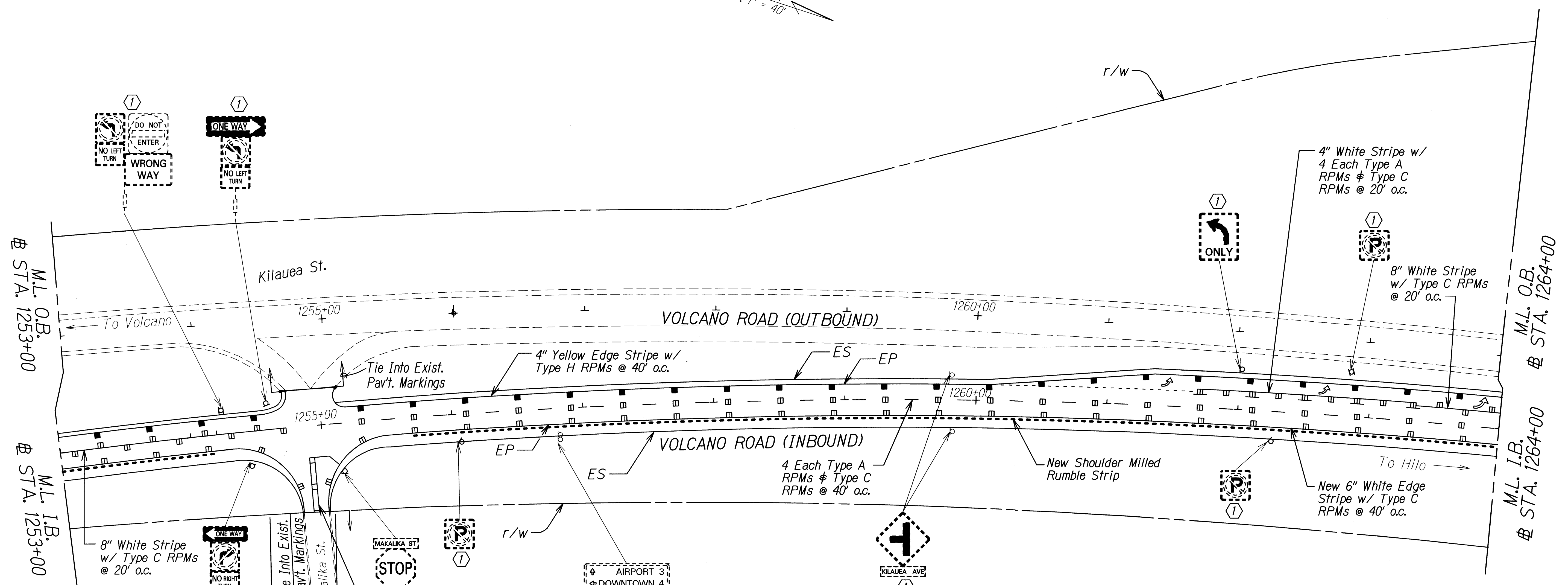


SURVEY PLOTTED BY: _____ DATE: _____
 DRAWN BY: _____
 DESIGNED BY: _____
 CHECKED BY: _____
 ORIGINAL PLAN: _____
 NOTE BOOK: _____
 NO. _____

STATE OF HAWAII
 DEPARTMENT OF TRANSPORTATION
 HIGHWAYS DIVISION
PAVEMENT MARKING & SIGNING PLAN
 VOLCANO ROAD
 Pavement Preventive Maintenance, I/B Lanes
 Keaau Bypass Road to Panaewa Bridge
 Federal Aid Project No. STP-011-2(39)
 Scale: 1" = 40' Date: Sept, 2010

FED. ROAD DIST. NO.	STATE	FED. AID PROJ. NO.	FISCAL YEAR	SHEET NO.	TOTAL SHEETS
HAWAII	HAW.	STP-011-2(39)	2011	31	33

TRUE NORTH
SCALE: 1" = 40'



M.L. O.B.
STA. 1253+00

M.L. I.B.
STA. 1253+00

M.L. O.B.
STA. 1264+00

M.L. I.B.
STA. 1264+00

- KEY:
- ① Exist. Sign(s) & Post(s) to Remain
 - ② Relocate Exist. sign(s) & Post(s) to New Location
 - ③ Install New Sign(s) w/ Post(s)

Sta. 1255+70 Rt. to # Sta. 1277+75 Rt.
Install Shoulder Milled Rumble Strip;
See Details on Plan Sheet No. I-3.

SURVEY PLOTTED BY	DATE
DESIGNED BY	
QUANTITIES BY	
CHECKED BY	
ORIGINAL PLAN	
NOTE BOOK	
DATE	
NO.	

STATE OF HAWAII
DEPARTMENT OF TRANSPORTATION
HIGHWAYS DIVISION

PAVEMENT MARKING & SIGNING PLAN

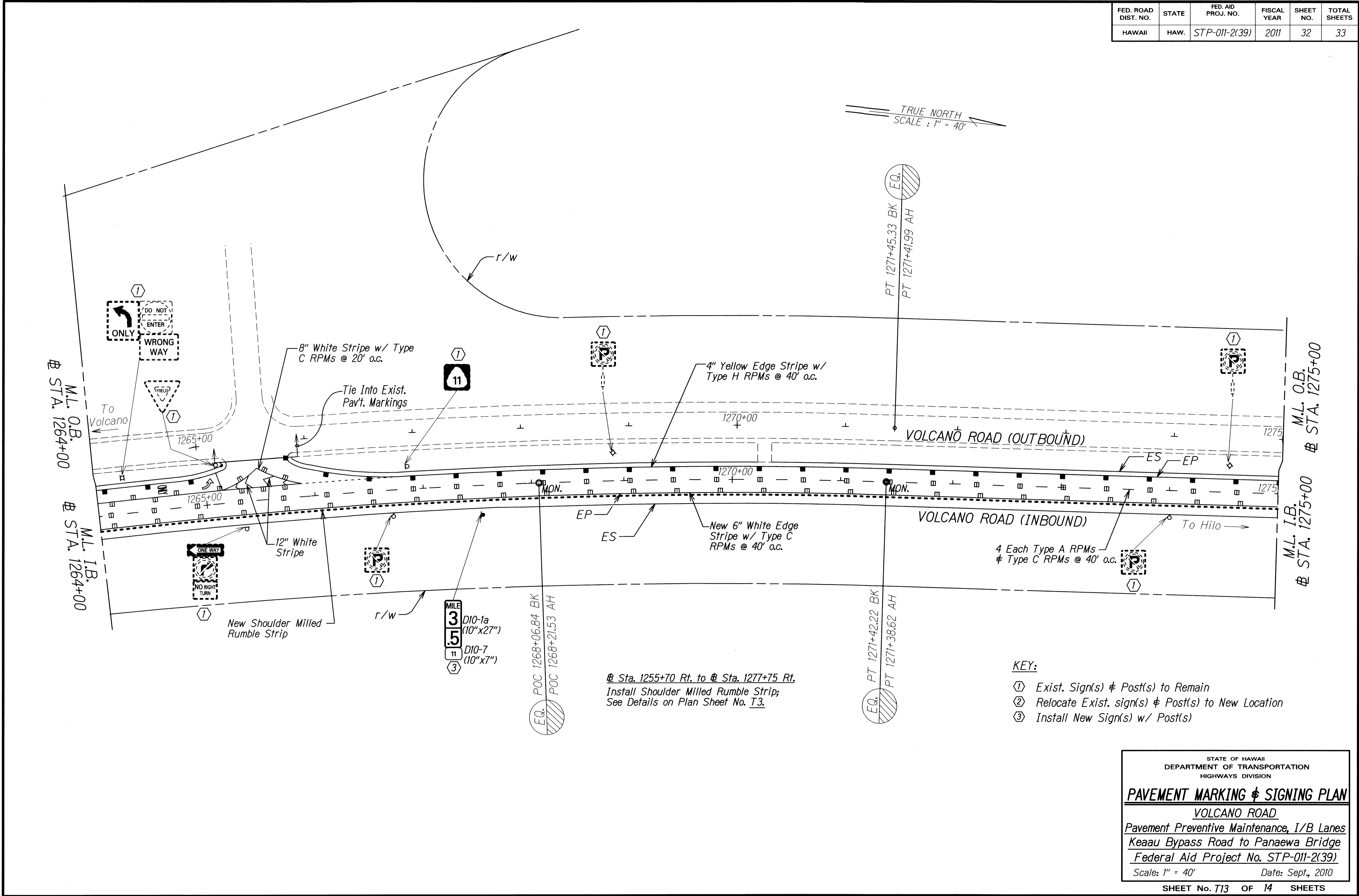
VOLCANO ROAD

Pavement Preventive Maintenance, I/B Lanes
Keaau Bypass Road to Panaewa Bridge
Federal Aid Project No. STP-011-2(39)

Scale: 1" = 40' Date: Sept., 2010

SHEET No. T12 OF 14 SHEETS

FED. ROAD DIST. NO.	STATE	FED. AID PROJ. NO.	FISCAL YEAR	SHEET NO.	TOTAL SHEETS
HAWAII	HAW.	STP-011-2(39)	2011	32	33



DATE	_____
SURVEY PLOTTED BY	_____
DESIGNED BY	_____
QUANTITIES BY	_____
CHECKED BY	_____
ORIGINAL PLAN	_____
NOTE BOOK	_____
DATE	_____
NO.	_____

- KEY:**
- ① Exist. Sign(s) & Post(s) to Remain
 - ② Relocate Exist. sign(s) & Post(s) to New Location
 - ③ Install New Sign(s) w/ Post(s)

STATE OF HAWAII
DEPARTMENT OF TRANSPORTATION
HIGHWAYS DIVISION

PAVEMENT MARKING & SIGNING PLAN

VOLCANO ROAD
Pavement Preventive Maintenance, I/B Lanes
Keaau Bypass Road to Panaewa Bridge
Federal Aid Project No. STP-011-2(39)
Scale: 1" = 40' Date: Sept., 2010

SHEET No. 713 OF 14 SHEETS

