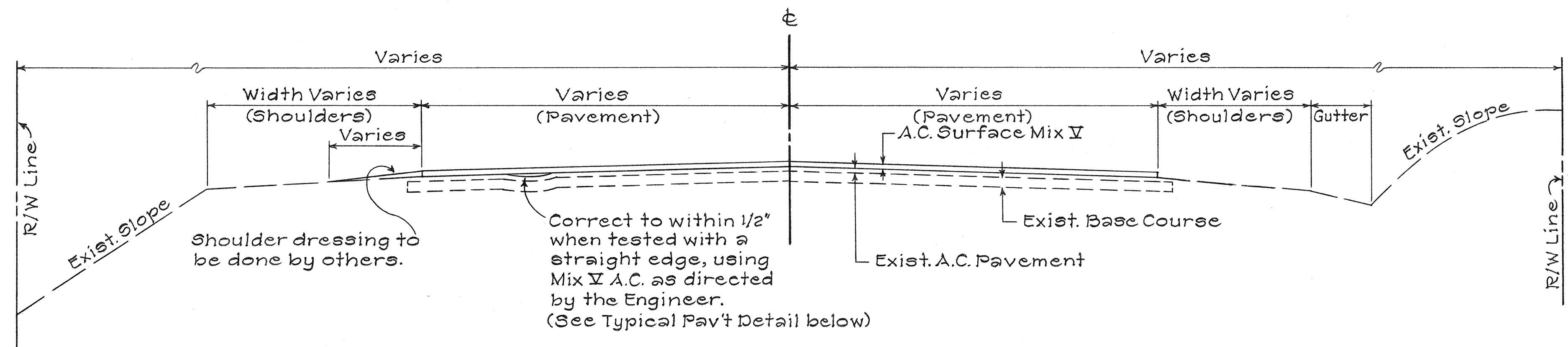
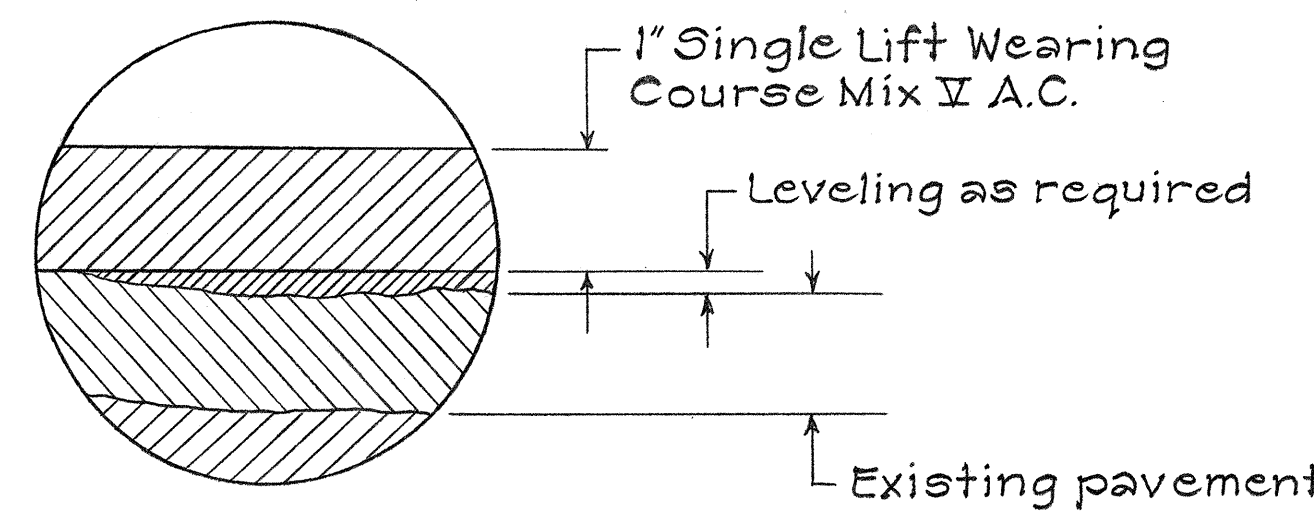


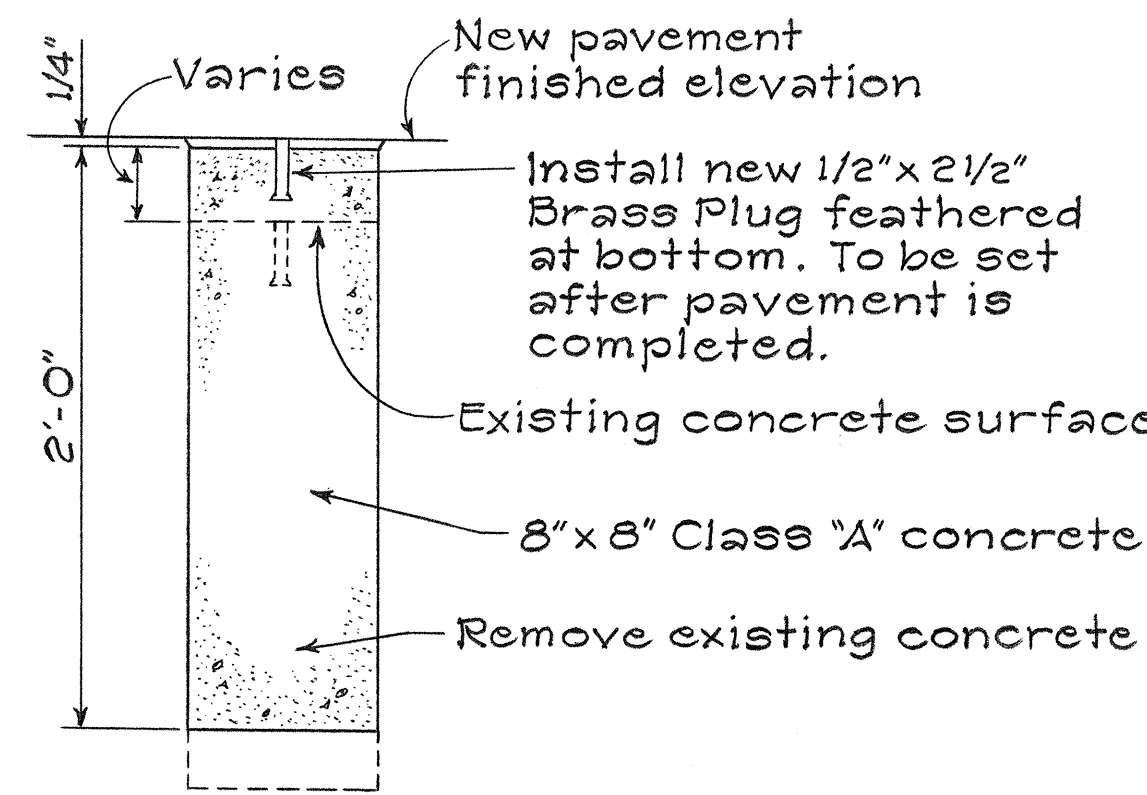
FED. ROAD DIST. NO.	STATE	PROJ. NO.	FISCAL YEAR	SHEET NO.	TOTAL SHEETS
HAWAII	HAW.	11C-01-75M	'75	3	23



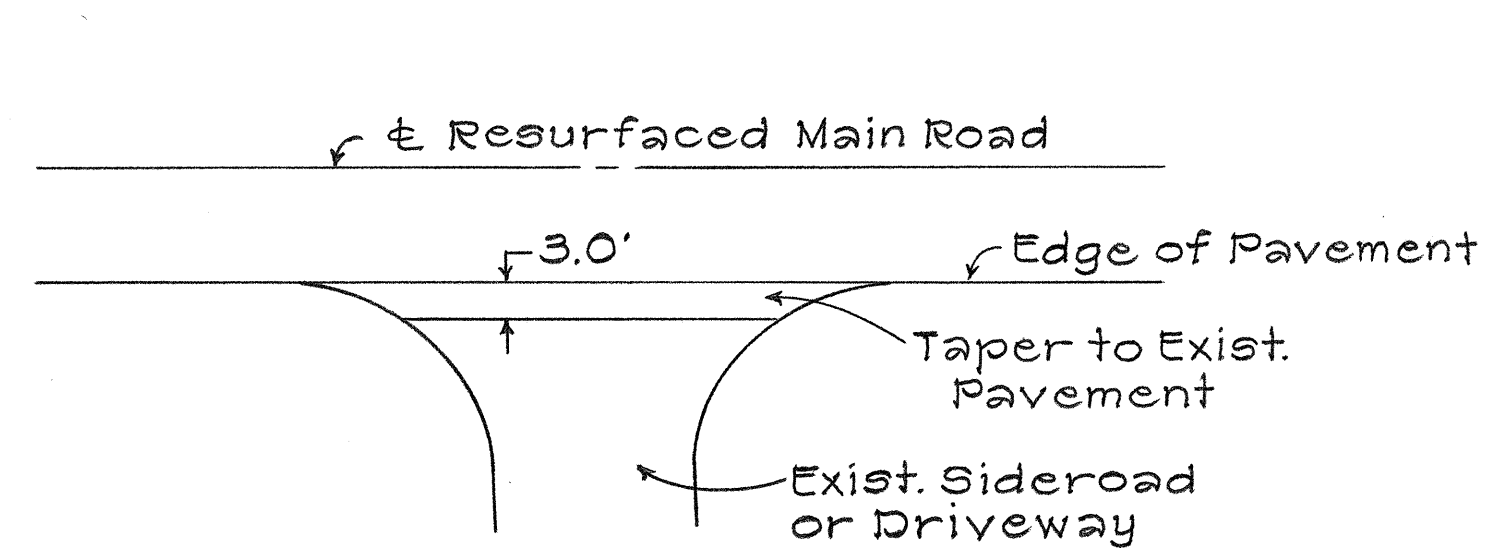
**TYPICAL SECTION**  
Scale: 3/8" = 1'-0"



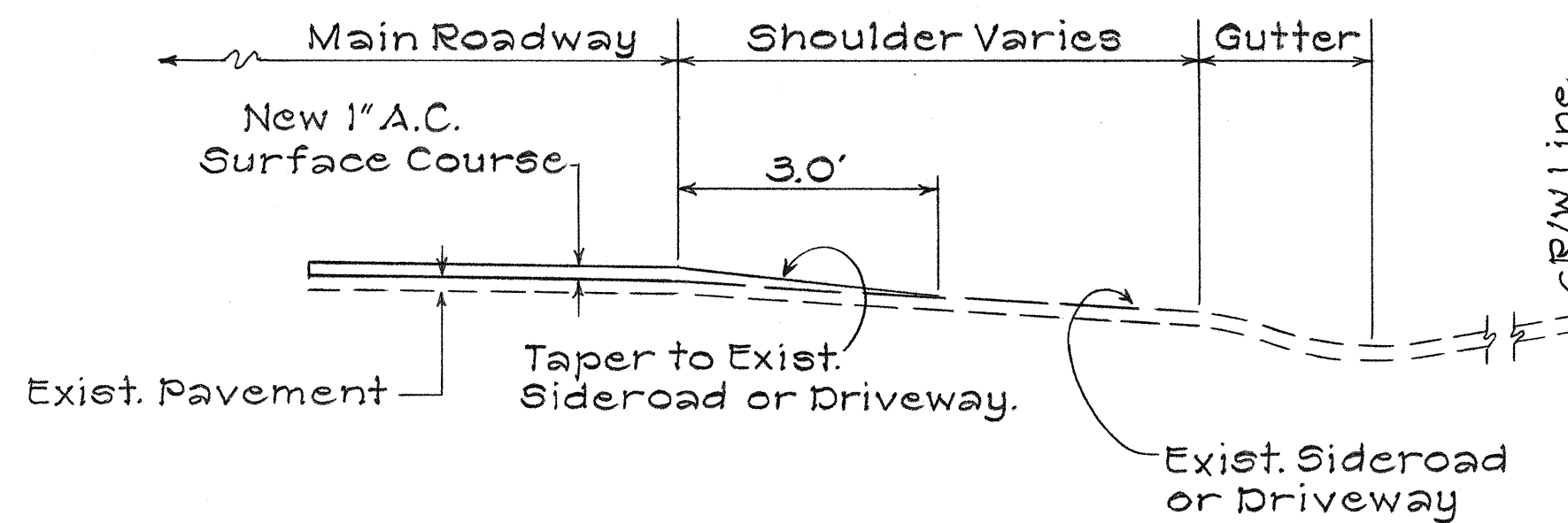
**TYPICAL PAVEMENT DETAIL**  
NOT TO SCALE



**DETAIL FOR RECONSTRUCTED  
& AND REFERENCE  
SURVEY MONUMENT**  
NOT TO SCALE



**TYPICAL PLAN SIDEROAD  
& DRIVEWAY CONNECTION**  
NOT TO SCALE



**TYPICAL SECTION SIDEROAD  
& DRIVEWAY CONNECTION**  
NOT TO SCALE

**GENERAL NOTES:**

- Existing pavement surface variable. Surface indicated here is not intended to represent any specific location.
- Centerline striping to be done by others.
- Wherever a definite widening of the existing pavement is evident on curved sections of the highway, including the portion of the highway which has been widened under the Safety Improvement Project 11BC-01-75 (approximate Sta. 749+00 to 756+50), resurfacing shall be carried to the limits of the pavement utilizing either full depth pavement or tapers as necessary.
- All Centerline and Reference Monuments to be referenced by others.

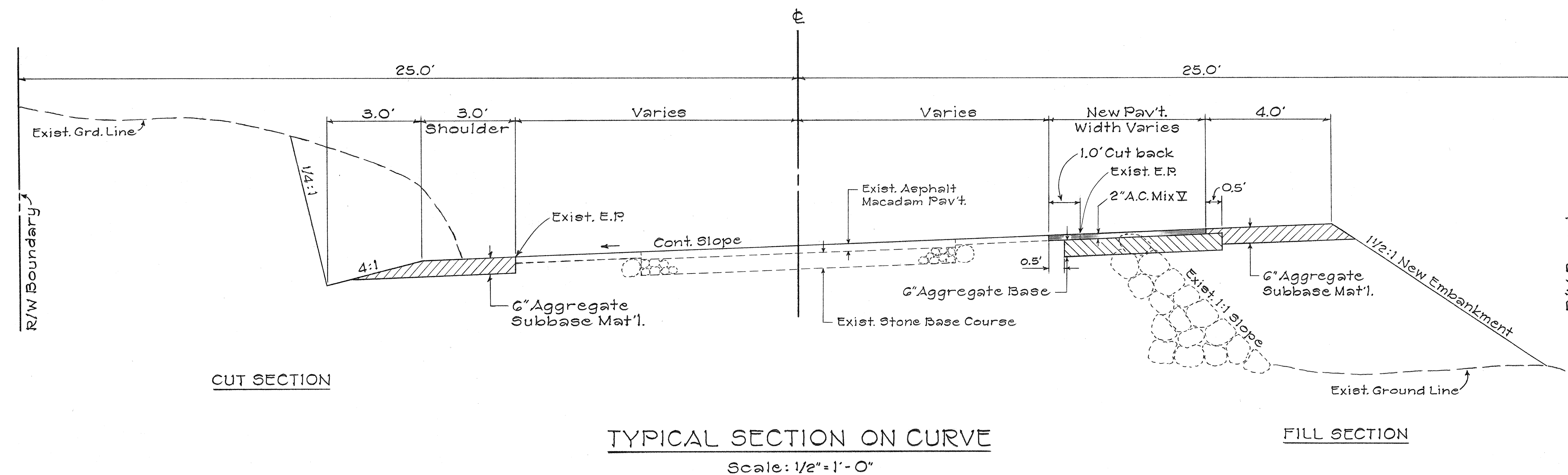
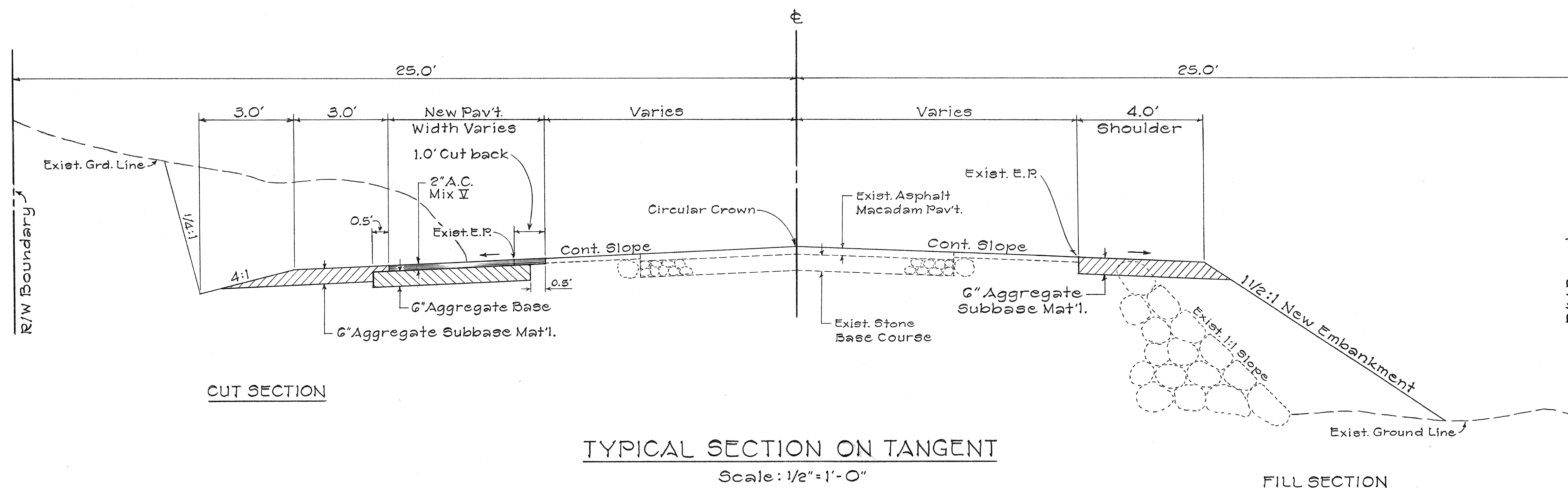
DESIGNED BY	DATE
TRACED BY	
DESIGNED BY	
QUANTITIES BY	
CHECKED BY	
ORIGINAL PLAN	
NOTE BOOK	
No.	

STATE OF HAWAII  
DEPARTMENT OF TRANSPORTATION  
HIGHWAYS DIVISION

TYPICAL SECTIONS & DETAILS  
FOR  
RESURFACING HAWAII BELT ROAD  
PROJECT No. 11C-01-75M  
SOUTH KONA, HAWAII  
Scale: As Noted Date: Mar. 1975

SHEET No. 1 OF 1 SHEETS

FED. ROAD DIST. NO.	STATE	PROJ. NO.	FISCAL YEAR	SHEET NO.	TOTAL SHEETS
HAWAII	HAW.	11BC-01-75	'75	4	23



DATE	_____
DESIGNED BY	_____
CHECKED BY	_____
NOTED BY	_____
ORIGINAL PLAN	_____
NOTE BOOK	_____
NO.	_____

STATE OF HAWAII  
DEPARTMENT OF TRANSPORTATION  
HIGHWAYS DIVISION

**TYPICAL SECTION**  
SAFETY IMPROVEMENTS ALONG  
HAWAII BELT ROAD HONAUNAU TO MILOLI  
PROJECT No. 11BC-01-75  
SOUTH KONA, HAWAII

Scale: As Noted Date: Mar. 1975

**SHEET No. 1 OF 1 SHEETS**