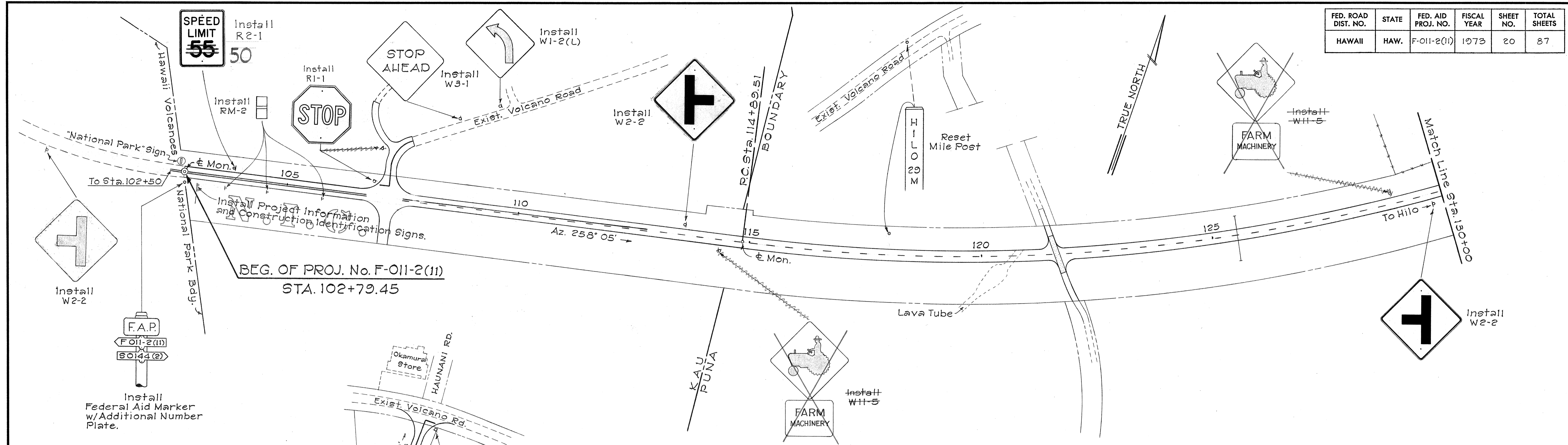
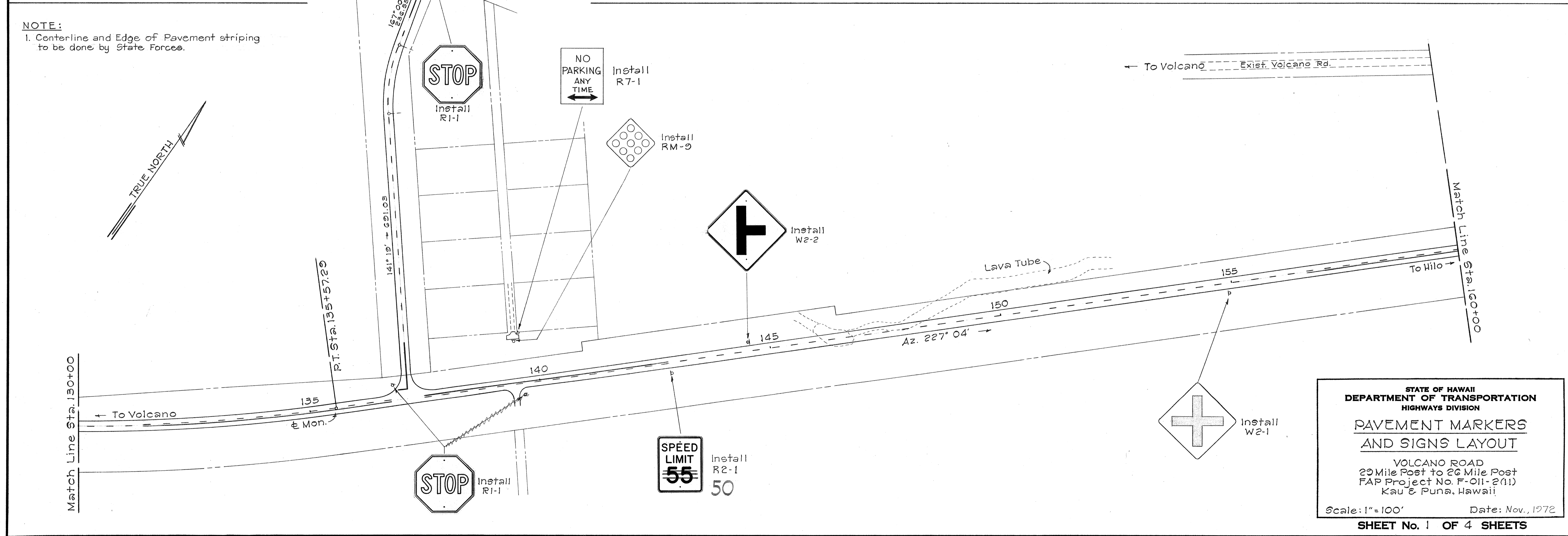


| FED. ROAD DIST. NO. | STATE | FED. AID PROJ. NO. | FISCAL YEAR | SHEET NO. | TOTAL SHEETS |
|---------------------|-------|--------------------|-------------|-----------|--------------|
| HAWAII | HAW. | F-011-2(11) | 1973 | 20 | 87 |



NOTE:
1. Centerline and Edge of Pavement striping to be done by State Forces.



| | |
|-------------------|--|
| DATE | |
| SURVEY PLOTTED BY | |
| DRAWN BY | |
| CHECKED BY | |
| DESIGNED BY | |
| QUANTITIES BY | |
| NOTED BY | |
| NO. | |

STATE OF HAWAII
DEPARTMENT OF TRANSPORTATION
HIGHWAYS DIVISION

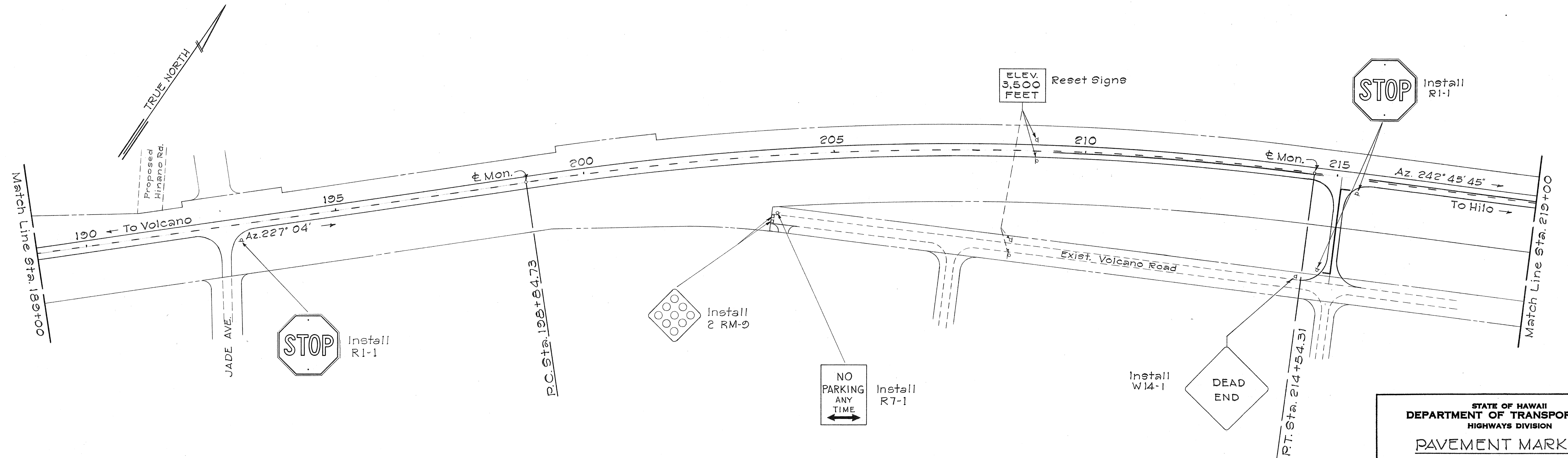
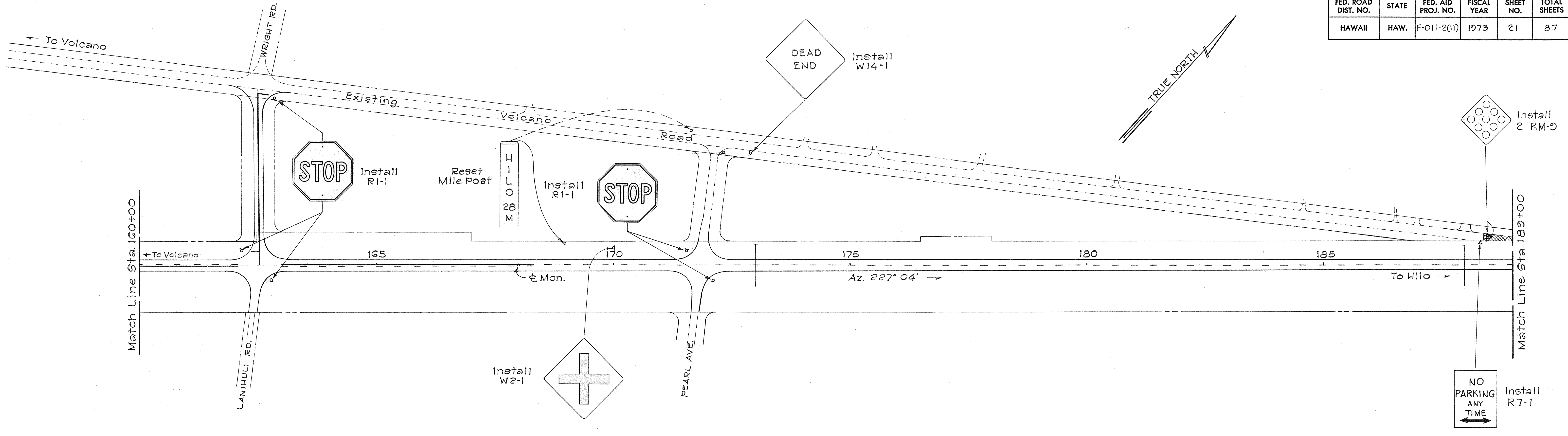
**PAVEMENT MARKERS
AND SIGNS LAYOUT**

VOLCANO ROAD
23 Mile Post to 26 Mile Post
FAP Project No. F-011-2(11)
Kau & Puna, Hawaii

Scale: 1"=100' Date: Nov., 1972

SHEET No. 1 OF 4 SHEETS

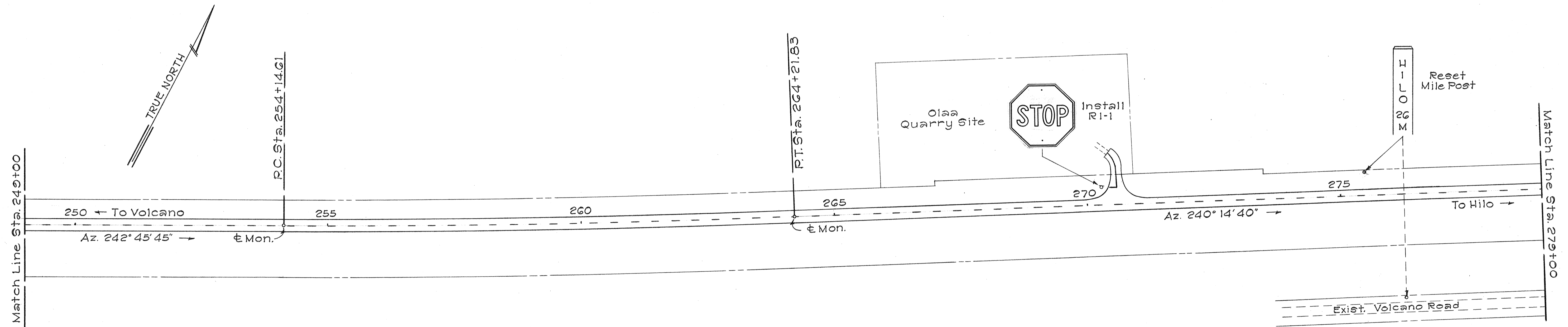
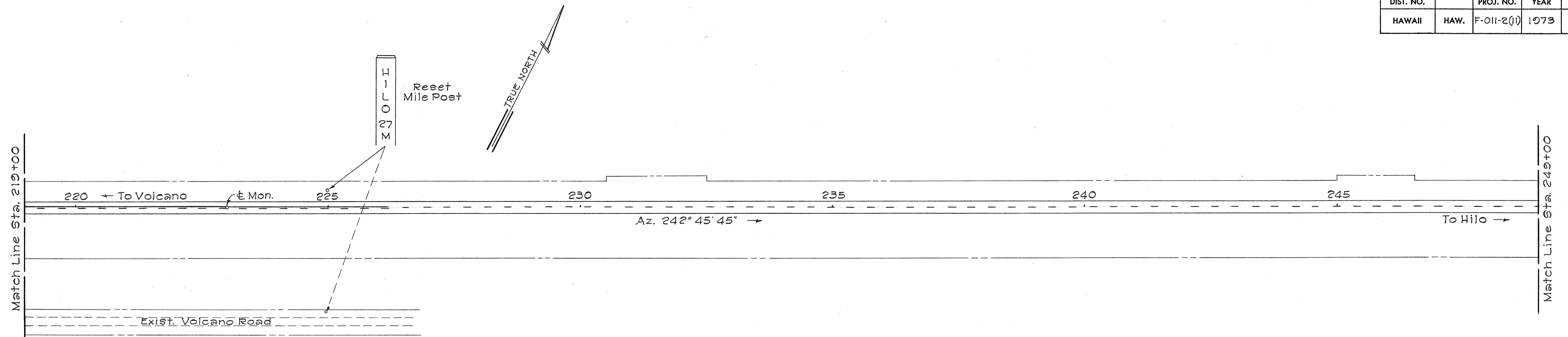
| FED. ROAD DIST. NO. | STATE | FED. AID PROJ. NO. | FISCAL YEAR | SHEET NO. | TOTAL SHEETS |
|---------------------|-------|--------------------|-------------|-----------|--------------|
| HAWAII | HAW. | F-011-2(11) | 1973 | 21 | 87 |



| | |
|---------------|-------|
| DATE | _____ |
| DESIGNED BY | _____ |
| TRACED BY | _____ |
| QUANTITIES BY | _____ |
| CHECKED BY | _____ |
| ORIGINAL PLAN | _____ |
| NOTE BOOK | _____ |
| No. | _____ |

STATE OF HAWAII
 DEPARTMENT OF TRANSPORTATION
 HIGHWAYS DIVISION
**PAVEMENT MARKERS
 AND SIGNS LAYOUT**
 VOLCANO ROAD
 29 Mile Post to 26 Mile Post
 FAP Project No. F-011-2(11)
 Kau & Puna, Hawaii
 Scale: 1"=100' Date: Nov, 1972
SHEET No. 2 OF 4 SHEETS

| FED. ROAD DIST. NO. | STATE | FED. AID PROJ. NO. | FISCAL YEAR | SHEET NO. | TOTAL SHEETS |
|---------------------|-------|--------------------|-------------|-----------|--------------|
| HAWAII | HAW. | F-011-2(1) | 1973 | 22 | 87 |



| | |
|-------------------|------|
| SURVEY PLOTTED BY | DATE |
| DRAWN BY | |
| DESIGNED BY | |
| QUANTITIES BY | |
| CHECKED BY | |
| ORIGINAL PLAN | |
| NOTE BOOK | |
| No. | |

STATE OF HAWAII
DEPARTMENT OF TRANSPORTATION
HIGHWAYS DIVISION

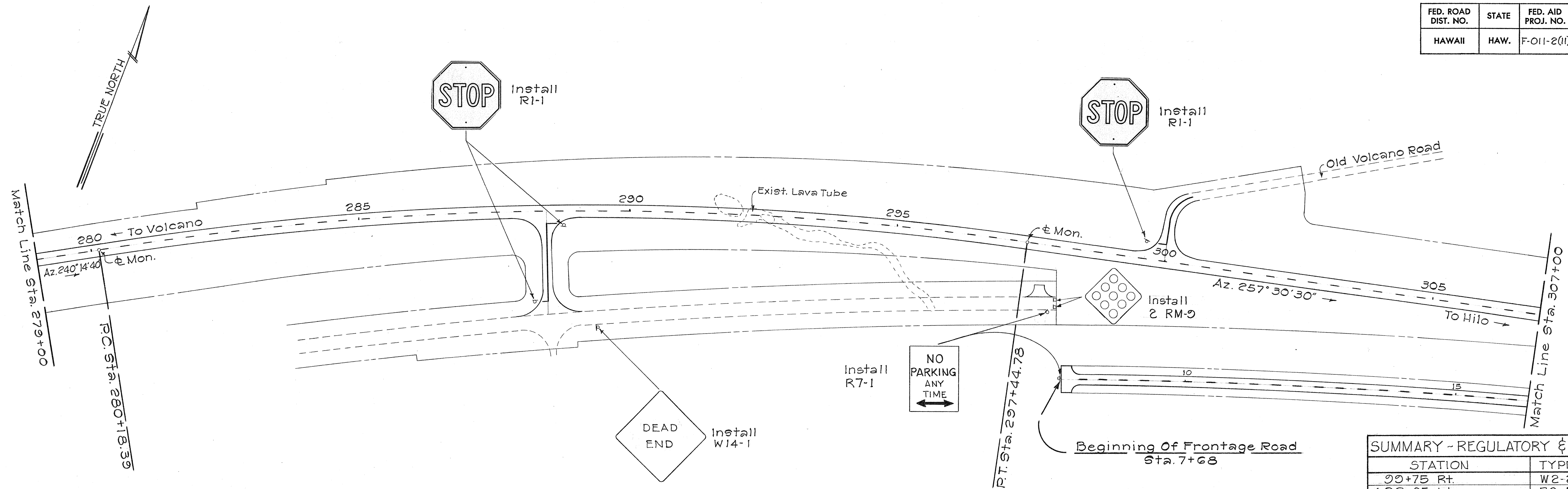
**PAVEMENT MARKERS
AND SIGNS LAYOUT**

VOLCANO ROAD
29 Mile Post to 26 Mile Post
FAP Project No. F-011-2(11)
Kau & Puna, Hawaii

Scale: 1"=100' Date: Nov., 1972

SHEET No. 3 OF 4 SHEETS

| FED. ROAD DIST. NO. | STATE | FED. AID PROJ. NO. | FISCAL YEAR | SHEET NO. | TOTAL SHEETS |
|---------------------|-------|--------------------|-------------|-----------|--------------|
| HAWAII | HAW. | F-011-2(1) | 1973 | 23 | 87 |

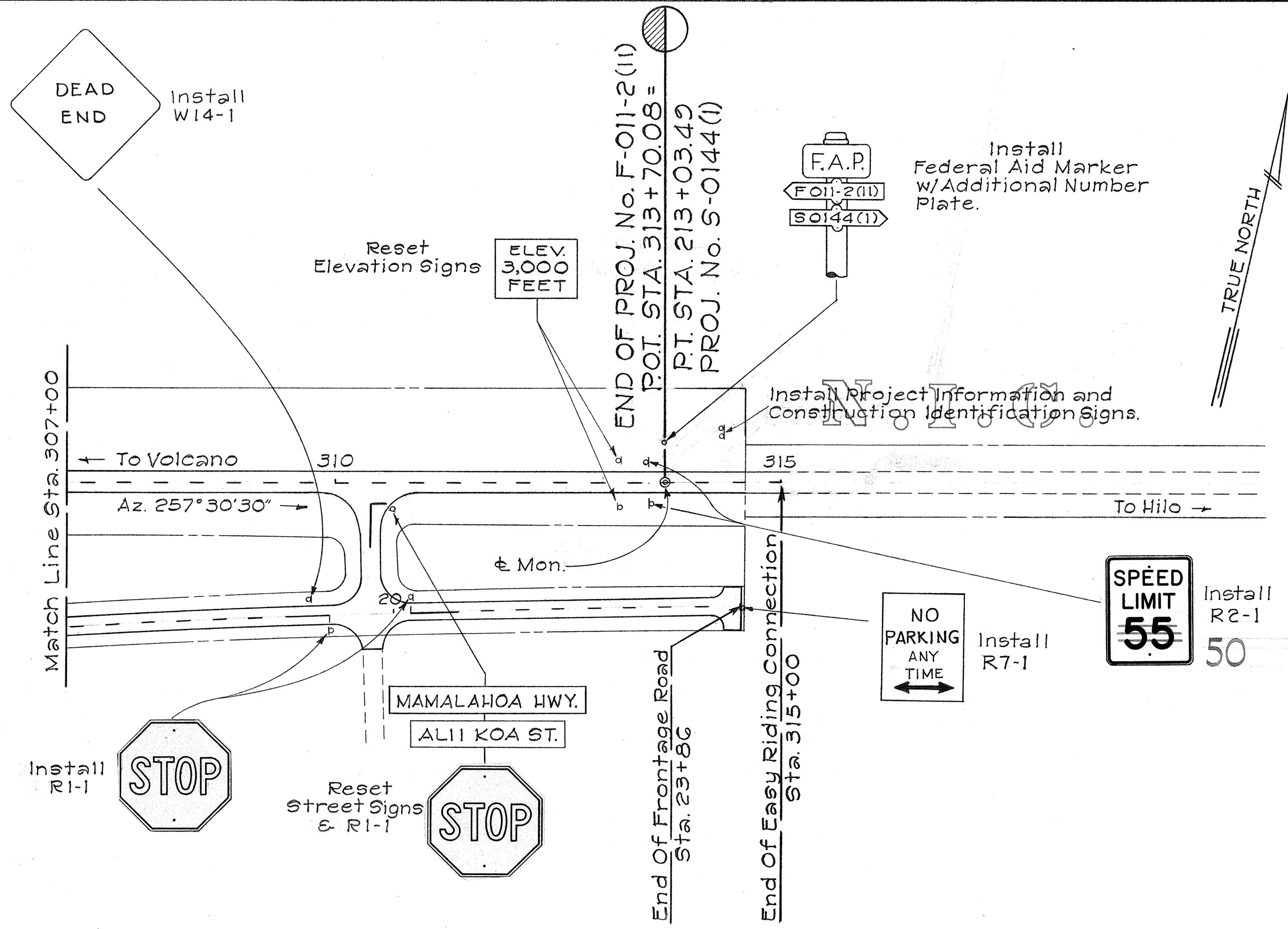


SUMMARY - REGULATORY & WARNING SIGNS

| STATION | TYPE | INSTALL | RESET |
|---------------------|---------|---------|-------|
| 29+75 Rt. | W2-2 | 1 | |
| 103+85 Lt. | R2-1 | 1 | |
| 107+15 Lt. Sideroad | R1-1 | 2 | |
| | W3-1 | 1 | |
| | W1-2(L) | 1 | |
| 113+60 Lt. | W2-2 | 1 | |
| 114+35 Rt. | W11-5 | 1 | |
| 120+00 Lt. | W11-5 | 1 | |
| 120+80 Rt. | W2-2 | 1 | |
| Haunani Road | R1-1 | 2 | |
| 130+65 Lt. | R7-1 | 1 | |
| 130+65 Rt. | R1-1 | 1 | |
| 142+80 Rt. | R2-1 | 1 | |
| 144+55 Lt. | W2-2 | 1 | |
| 154+00 Rt. | W2-1 | 1 | |
| Lanihuli Road | R1-1 | 3 | |
| 170+00 Lt. | W2-1 | 1 | |
| Pearl Ave. | R1-1 | 2 | |
| 172+90 Lt. 1/2 230' | W14-1 | 1 | |
| 188+30 Lt. 1/2 45' | R7-1 | 1 | |
| Jade Ave. | R1-1 | 1 | |
| 203+80 Rt. 1/2 110' | R7-1 | 1 | |
| 214+50 Rt. 1/2 200' | W14-1 | 1 | |
| 215+14 Rt. Sideroad | R1-1 | 2 | |
| 270+30 Lt. | R1-1 | 1 | |
| 288+50 Rt. Sideroad | R1-1 | 2 | |
| 280+40 Rt. 1/2 215' | W14-1 | 1 | |
| 208+00 Rt. 1/2 125' | R7-1 | 1 | |
| 208+35 Rt. 1/2 240' | R7-1 | 1 | |
| 200+60 Lt. | R1-1 | 1 | |
| 300+70 Rt. 1/2 130' | W14-1 | 1 | |
| 310+40 Rt. Sideroad | R1-1 | 2 | 1 |
| 313+50 Lt. & Rt. | R2-1 | 2 | |
| 314+60 Rt. 1/2 140' | R7-1 | 1 | |
| TOTAL | | 43 | 1 |

SUMMARY - PAVEMENT MARKERS

| | TYPE "D" | TYPE "H" | TYPE "J" |
|--|----------|----------|----------|
| Sta. 102+50 to Sta. 106+70 ~ No Passing - Both Sides | 22 | - | - |
| Sta. 107+50 to Sta. 112+85 ~ Passing - Rt., No Passing - Lt. | 12 | 13 | 84 |
| Sta. 112+85 to Sta. 131+50 ~ Passing - Both Sides | 46 | - | 276 |
| Sta. 131+50 to Sta. 136+85 ~ No Passing - Rt., Passing - Lt. | 12 | 13 | 84 |
| Sta. 137+50 to Sta. 142+85 ~ Passing - Rt., No Passing - Lt. | 12 | 13 | 84 |
| Sta. 142+85 to Sta. 156+70 ~ Passing - Both Sides | 34 | - | 204 |
| Sta. 156+70 to Sta. 162+05 ~ No Passing - Rt., Passing - Lt. | 12 | 13 | 84 |
| Sta. 163+00 to Sta. 168+35 ~ Passing - Rt., No Passing - Lt. | 12 | 13 | 84 |
| Sta. 168+35 to Sta. 200+40 ~ Passing - Both Sides | 102 | - | 612 |
| Sta. 200+40 to Sta. 214+75 ~ No Passing - Rt., Passing - Lt. | 12 | 13 | 84 |
| Sta. 215+65 to Sta. 226+20 ~ Passing - Rt., No Passing - Lt. | 26 | 27 | 162 |
| Sta. 226+20 to Sta. 315+00 ~ Passing - Both Sides | 224 | - | 1,332 |
| TOTALS | 526 | 105 | 3,090 |



SURVEY PLOTTED BY: _____ DATE: _____
 DESIGNED BY: _____
 CHECKED BY: _____
 ORIGINAL PLAN NO. _____
 NOTE BOOK QUANTITIES BY: _____
 CHECKED BY: _____

STATE OF HAWAII
 DEPARTMENT OF TRANSPORTATION
 HIGHWAYS DIVISION
**PAVEMENT MARKERS
 AND SIGNS LAYOUT**
 VOLCANO ROAD
 29 Mile Post to 26 Mile Post
 FAP Project No. F-011-2(1)
 Kau & Puna, Hawaii
 Scale: 1"=100' Date: Nov., 1972
SHEET No. 4 OF 4 SHEETS