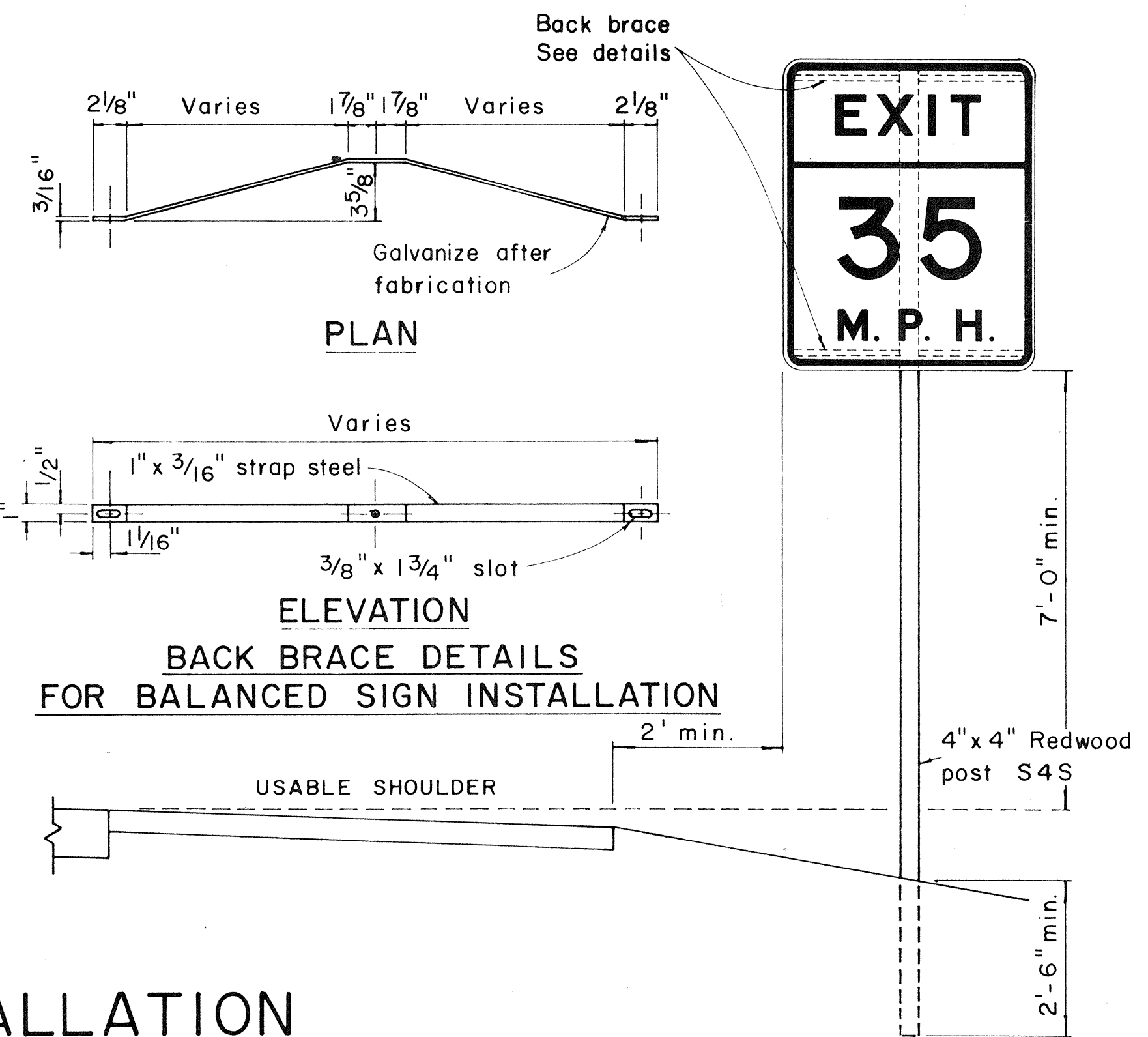
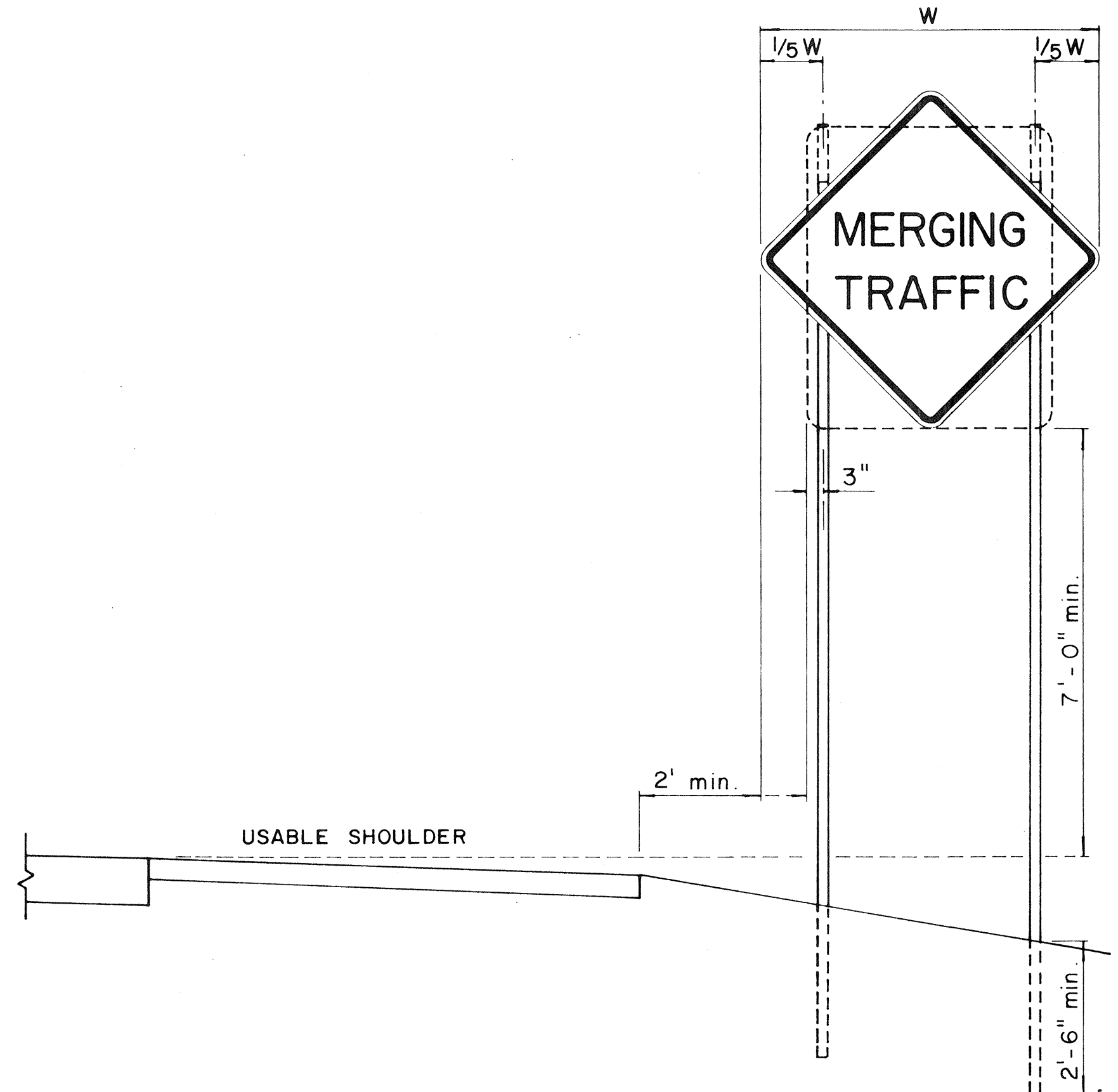
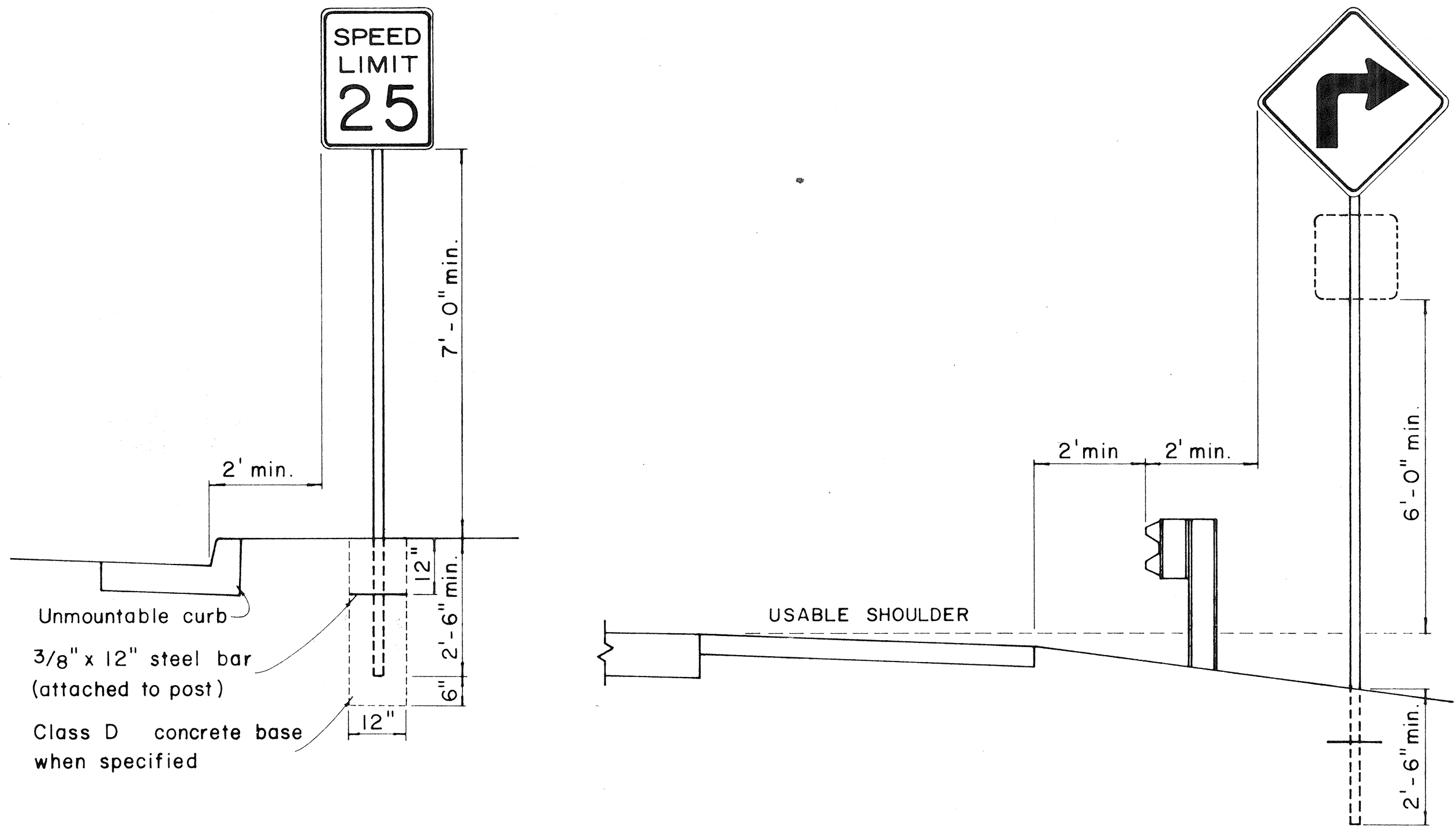
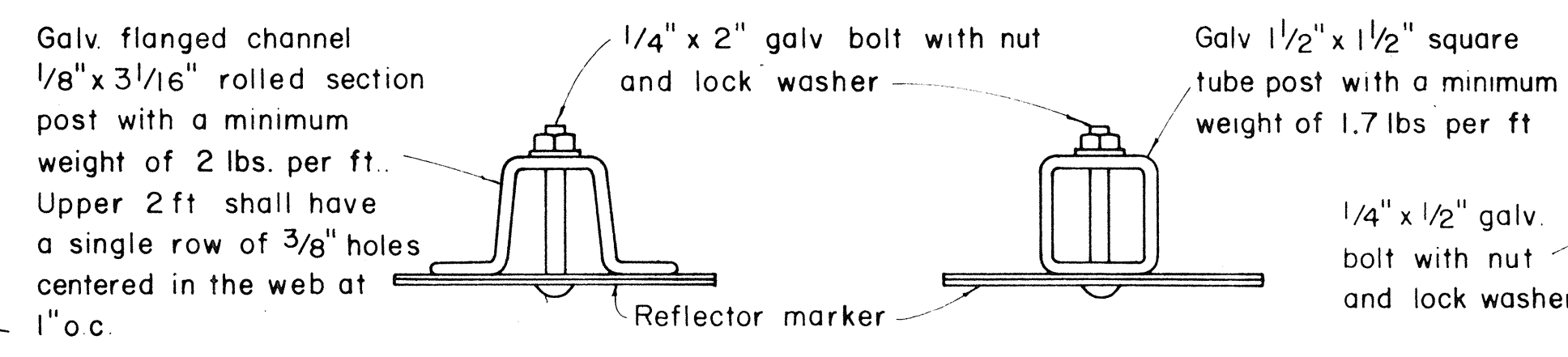
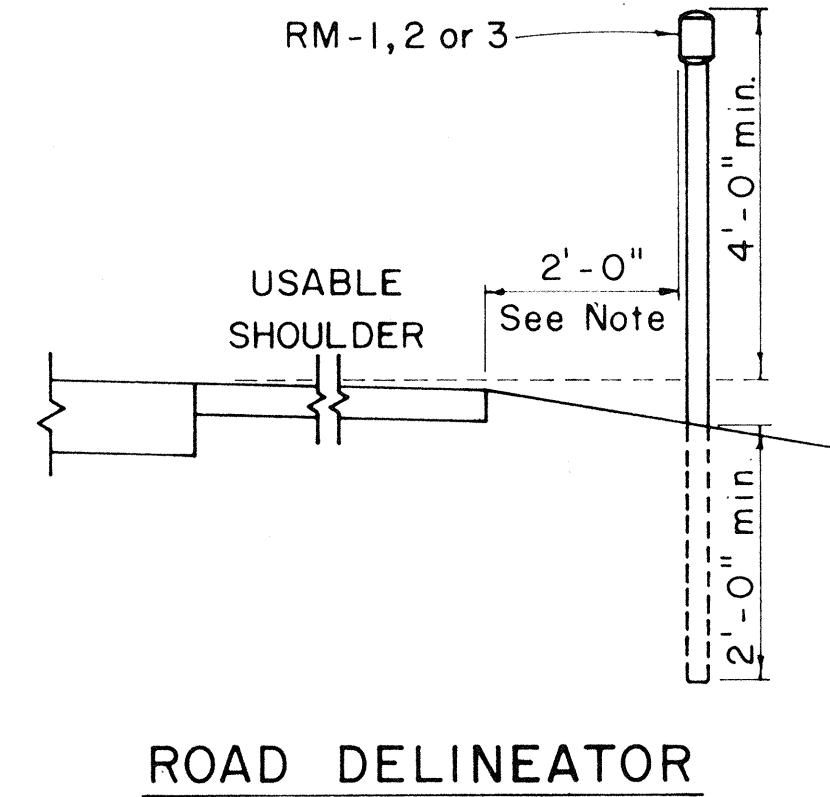


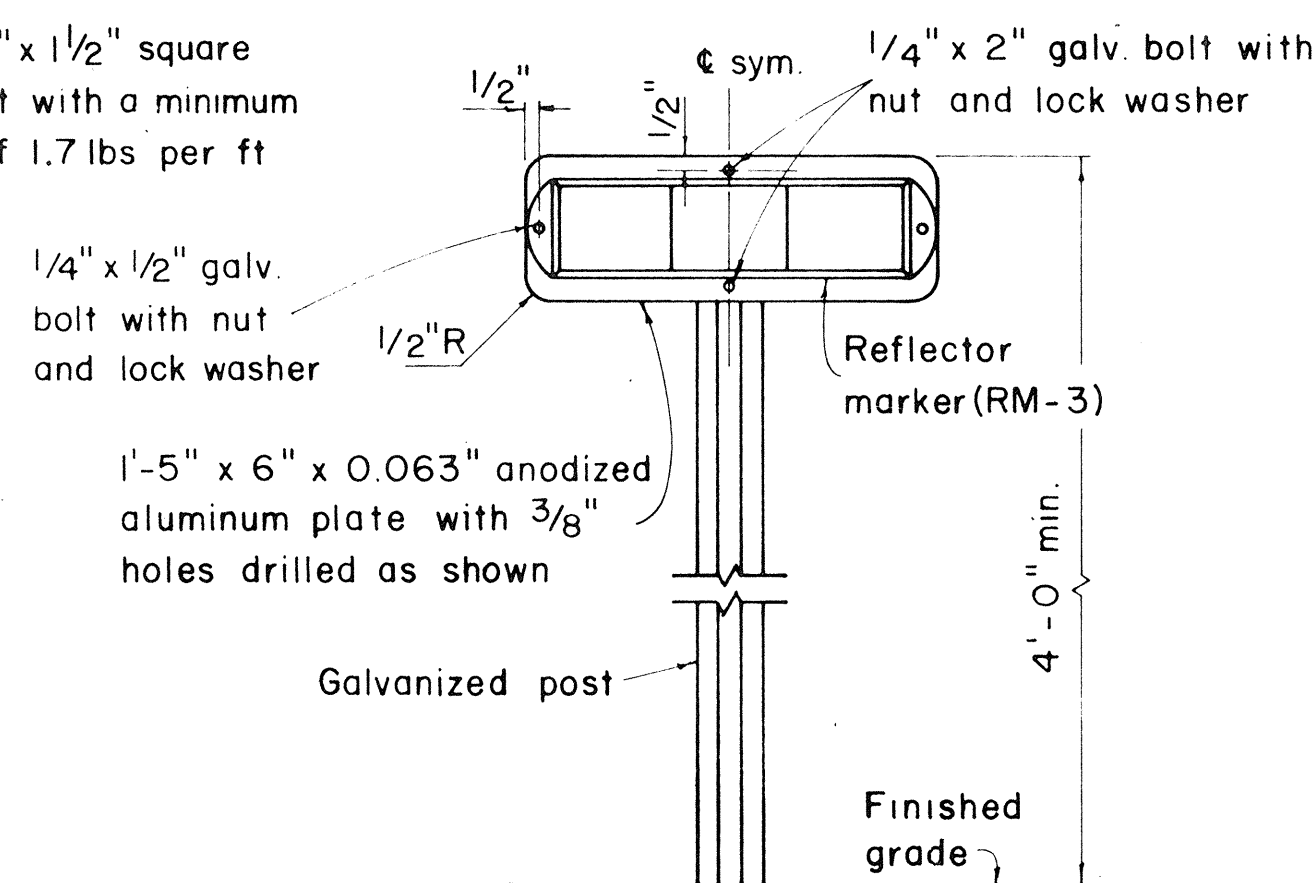
| FED. ROAD DIST. NO. | STATE | PROJ. NO. | FISCAL YEAR | SHEET NO. | TOTAL SHEETS |
|---------------------|-------|-----------|-------------|-----------|--------------|
| HAWAII              | HAW.  | HP-01-71  | 1971        | 8         | 12           |



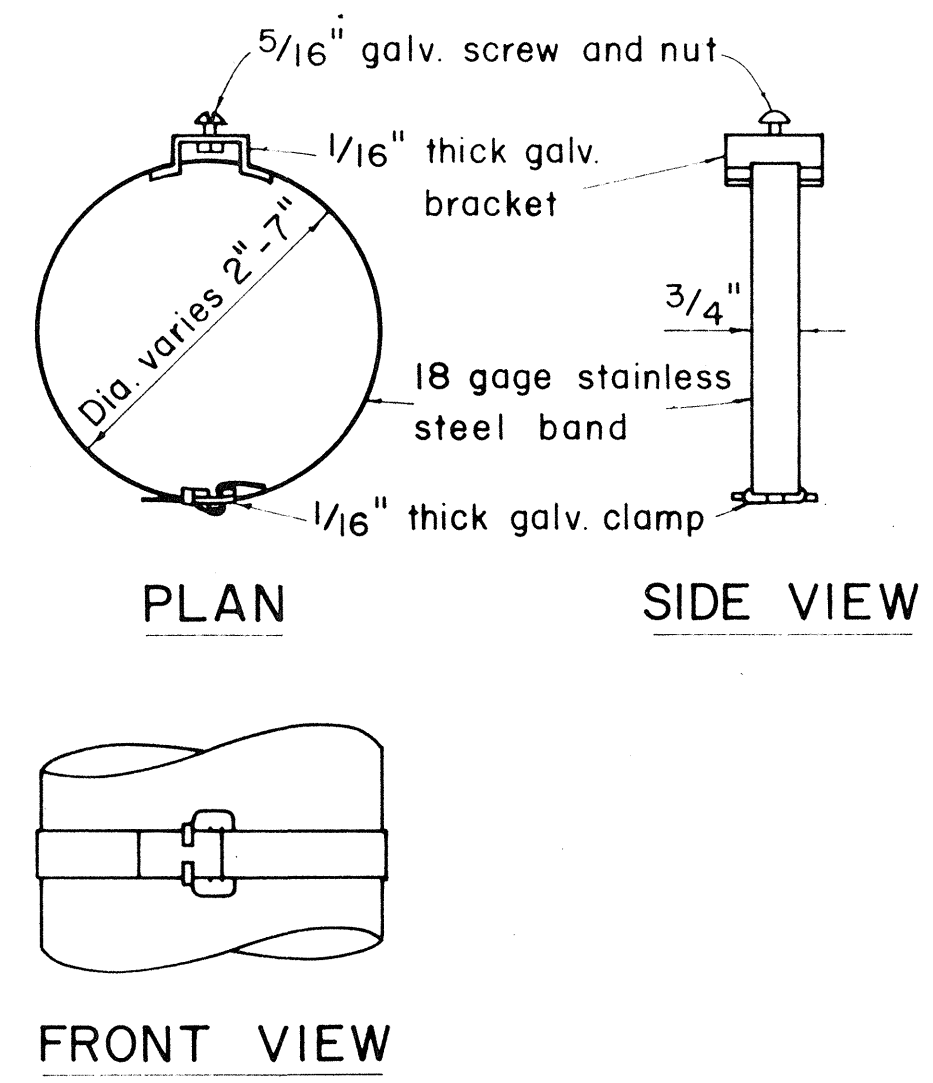
# HEIGHT AND LATERAL LOCATION OF SIGNS - TYPICAL INSTALLATION



TYPICAL SECTION OF ROAD DELINEATOR



TYPICAL DETAIL HORIZONTAL REFLECTOR MARKER RM-3H



TYPICAL BAND BRACKET FOR MOUNTING TRAFFIC SIGNS

- GENERAL NOTES:
- Sign posts shall be 2" galv. standard pipe or 2" x 2" galv. sq. tube post.
  - Signs 48" and wider or larger than 10 sq. ft. in area shall be mounted on two 2" galv. standard pipe or two 2" x 2" galv. sq. tube post or 4" x 4" redwood post S4S.
  - Signs shall be attached to post with 5/16" galv. bolts with nuts and 7/8" x 0.06 stainless steel washers with neoprene rubber gasket.
  - Sign posts shall extend 3 1/2" above sign where required for City and County street name signs.
  - Reflector markers RM-1, 2, 3 shall be glass sphere reflector markers with 4" x 5" reflector units (as shown) or plastic prismatic reflector markers with 3" diameter reflector units.
  - Clearance markers (RM-3, RM-4) shall be installed with the edge of the marker in line with the inner edge of the obstruction.
  - (R) or (L) indicates right or left and shall be as shown on the plans.

APPROVAL RECOMMENDED:  
*Enishi Tanaka* 12/22/63  
TRAFFIC ENGINEER DATE

APPROVED:  
*James J. Zedler* 12-20-64  
ASSISTANT CHIEF, ENGINEERING DATE

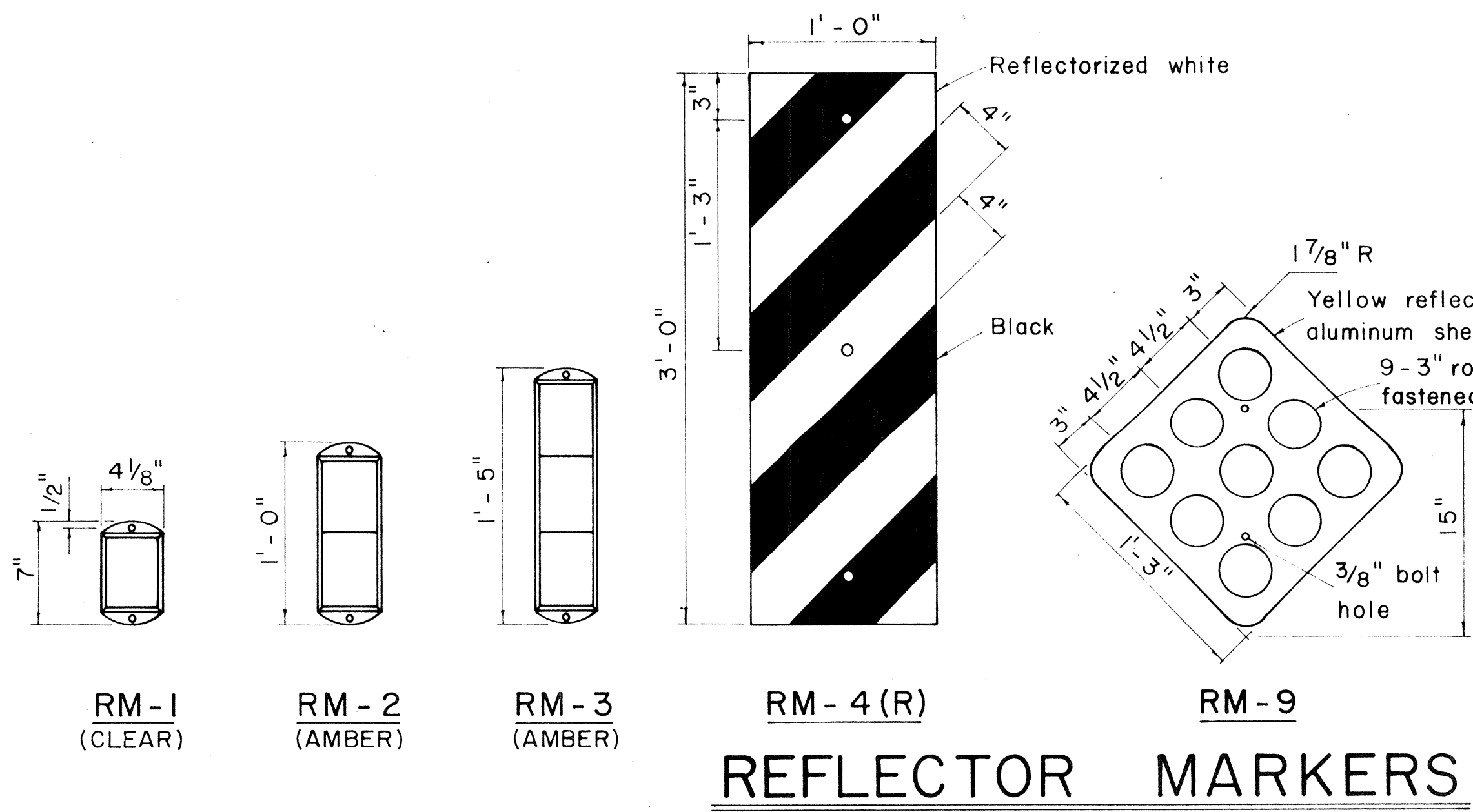
| NO | REVISION | APPROVED BY | DATE |
|----|----------|-------------|------|
|    |          |             |      |
|    |          |             |      |
|    |          |             |      |

STATE OF HAWAII  
DEPARTMENT OF TRANSPORTATION  
HIGHWAYS DIVISION

**STANDARD DETAILS**  
**MISCELLANEOUS SIGN DETAILS**

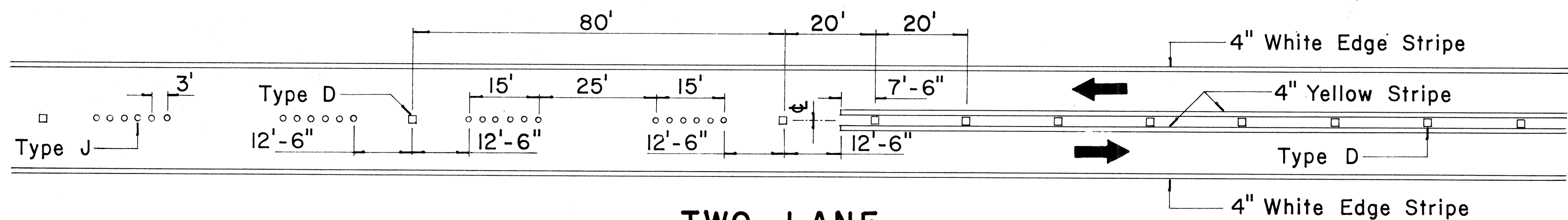
Not to scale March, 1968  
SHEET No. 1 OF 3 SHEETS DT 100

|               |      |
|---------------|------|
| DESIGNED BY   | DATE |
| TRACED BY     |      |
| QUANTITIES BY |      |
| CHECKED BY    |      |
| ORIGINAL PLAN |      |
| NOTE BOOK     |      |
| NO.           |      |

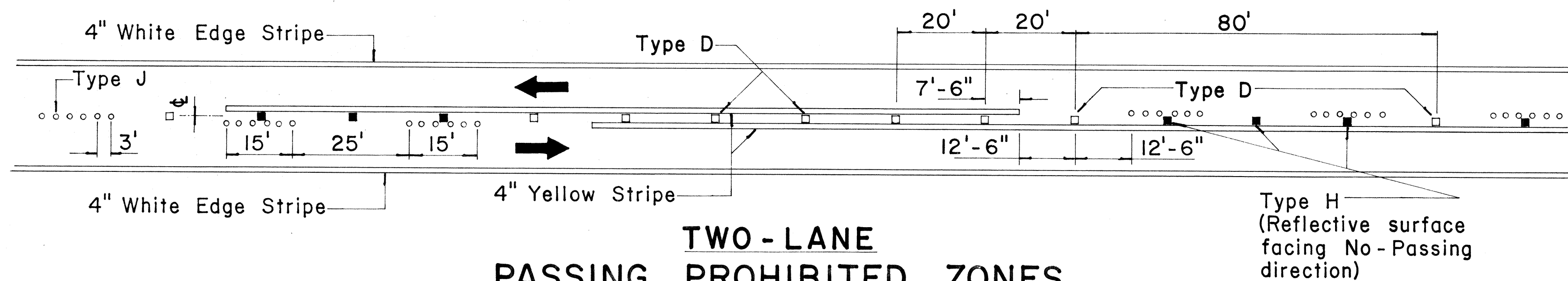


REFLECTOR MARKERS

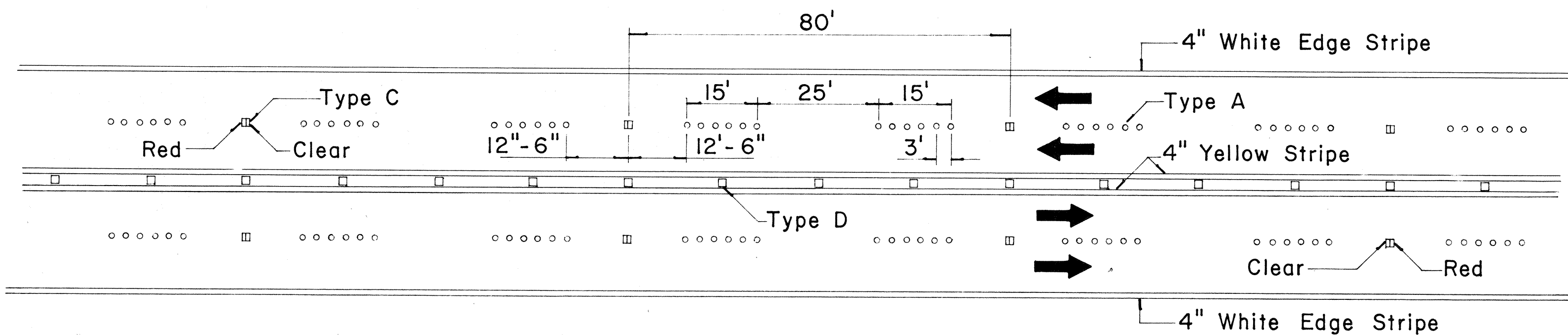
| FED. ROAD DIST. NO. | STATE | FED. AID PROJ. NO. | FISCAL YEAR | SHEET NO. | TOTAL SHEETS |
|---------------------|-------|--------------------|-------------|-----------|--------------|
| HAWAII              | HAW.  | 11P-01-71          | 1971        | 9         | 12           |



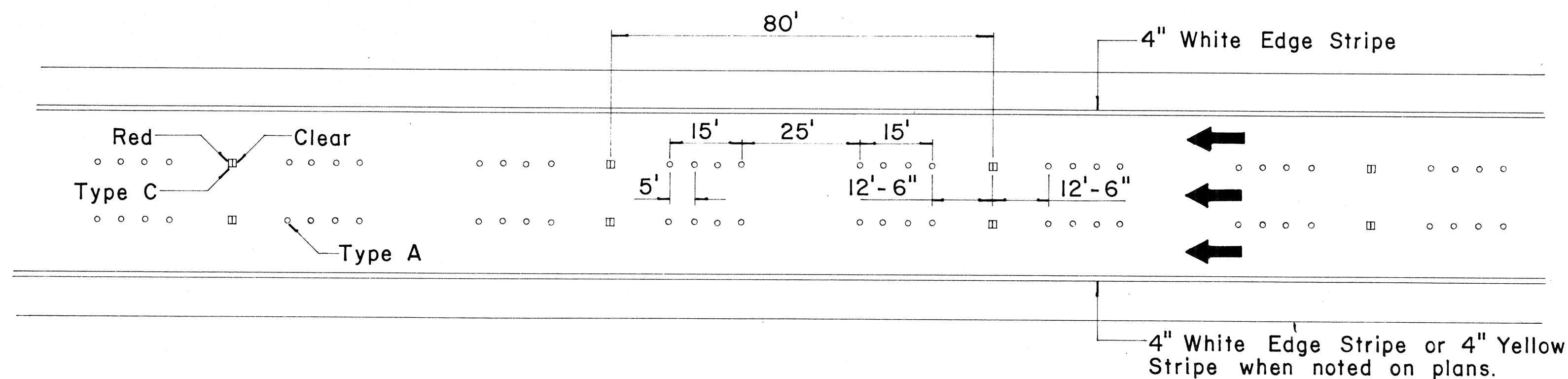
**TWO-LANE  
PASSING PERMITTED AND PASSING PROHIBITED**



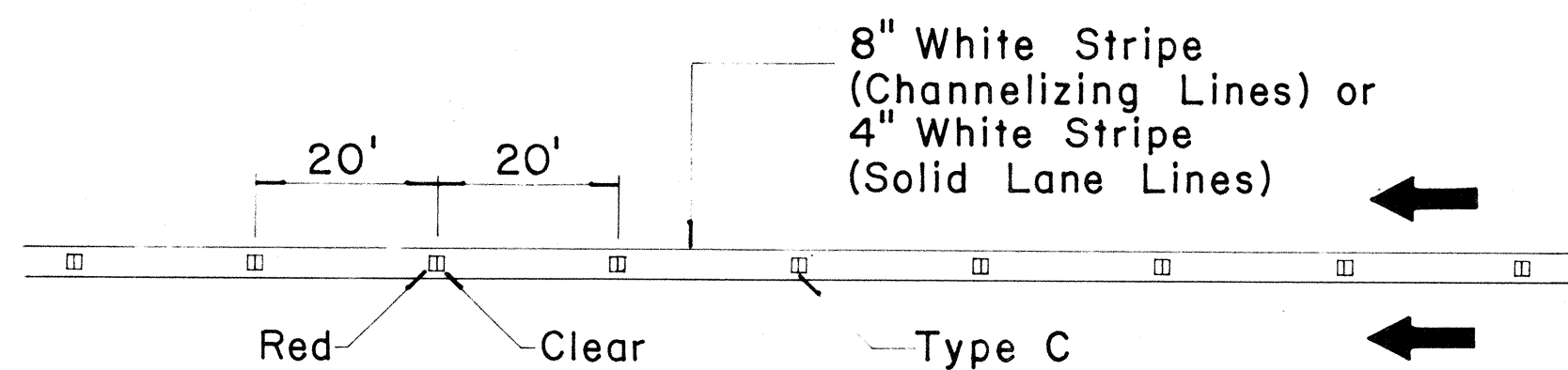
**TWO-LANE  
PASSING PROHIBITED ZONES**



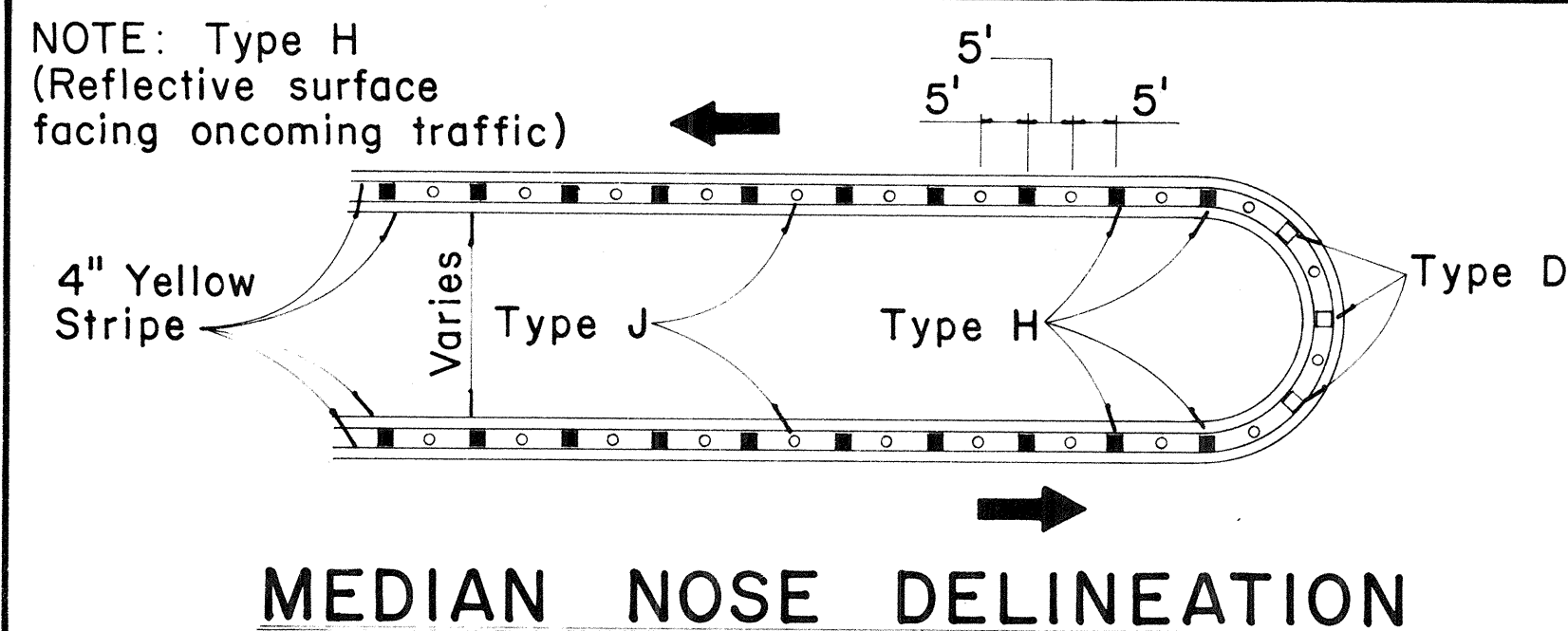
**MULTI-LANE  
LANE LINES AND CENTER LINE**



**FREEWAY LANE LINES**



**CHANNELIZING LINES  
OR SOLID LANE LINES**



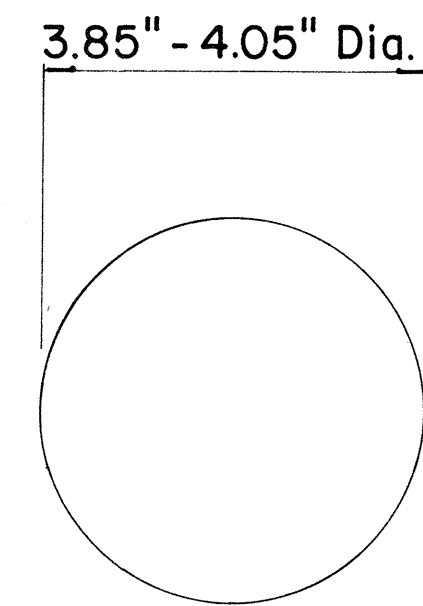
**MEDIAN NOSE DELINEATION**

**TWO - LANE**

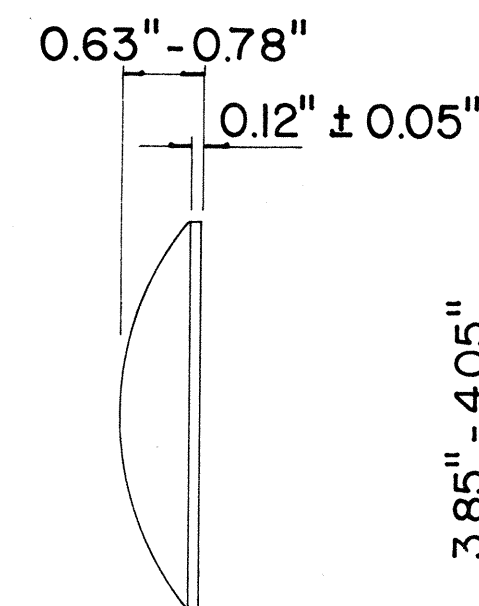
**MULTI - LANE**

**FREEWAY**

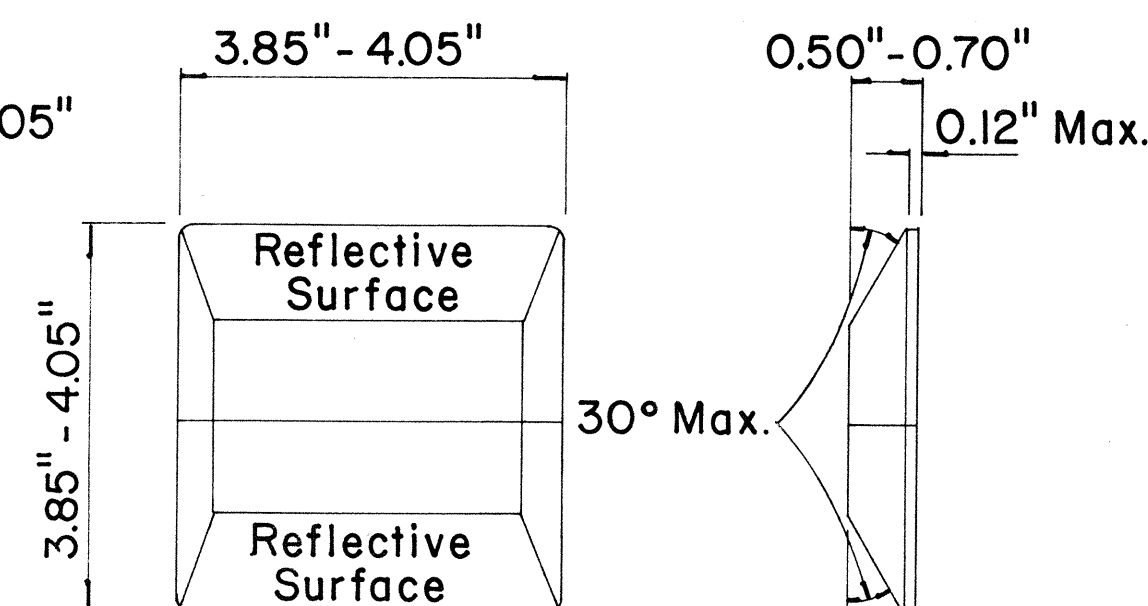
**MISCELLANEOUS**



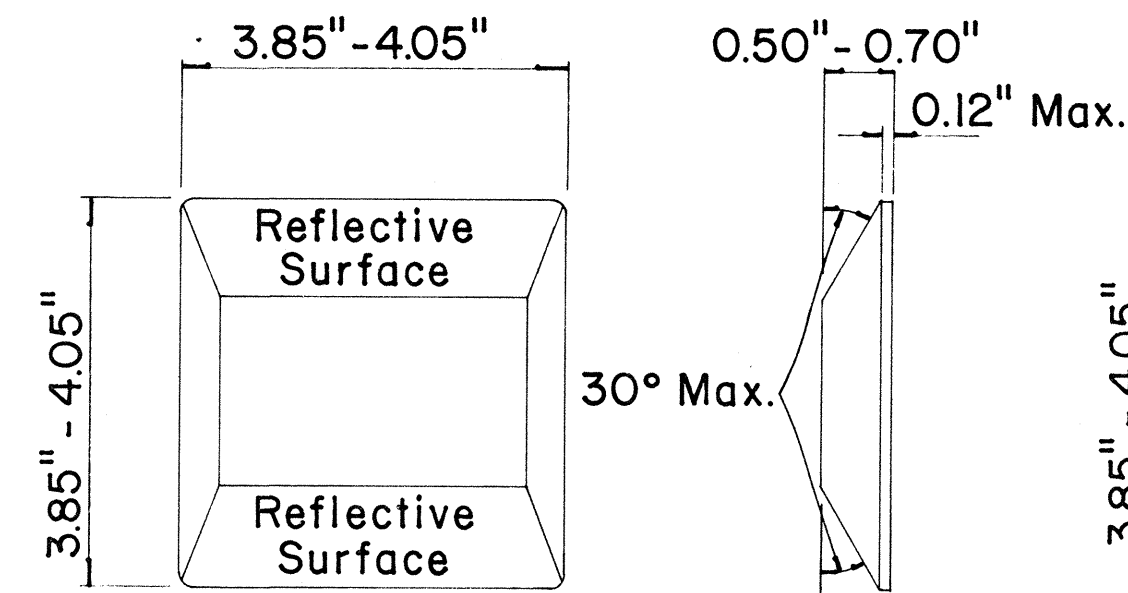
**TYPE A  
NON-REFLECTIVE WHITE MARKER**



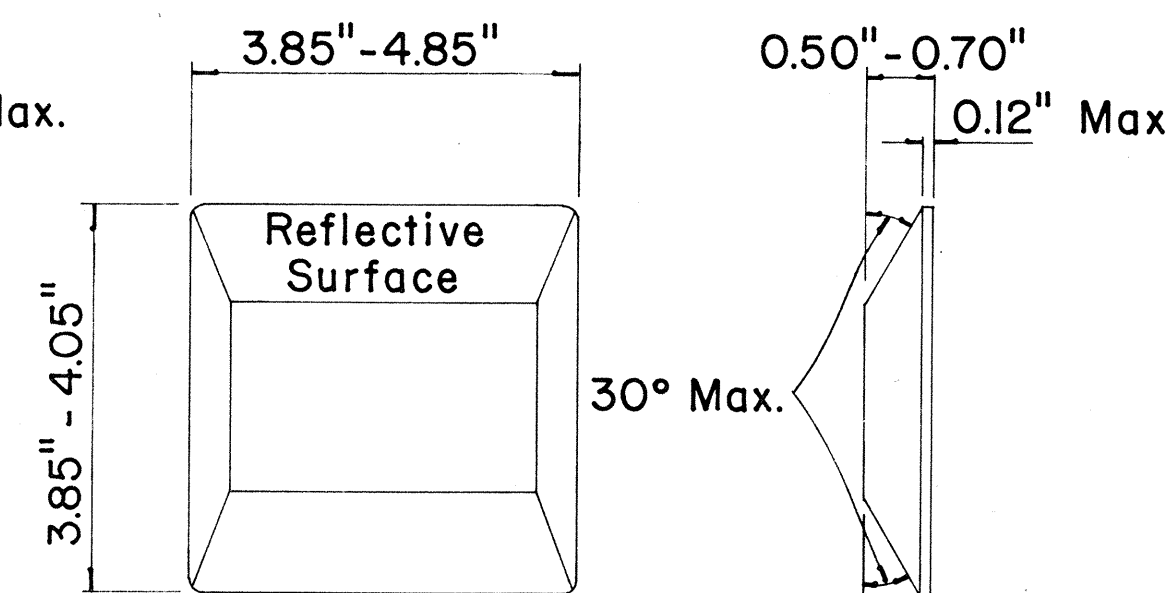
**TYPE J  
NON-REFLECTIVE YELLOW MARKER**



**TYPE C  
RED-CLEAR REFLECTIVE MARKER**



**TYPE D  
TWO-WAY YELLOW REFLECTIVE MARKER**



**TYPE H  
ONE-WAY YELLOW REFLECTIVE MARKER**

## GENERAL NOTES

1. Painted stripes to be done by State forces.

APPROVAL RECOMMENDED:  
*Erich Tanaka* 11/18/71  
TRAFFIC ENGINEER DATE

APPROVED:  
*Shirley Sato* 11/18/71  
ASSISTANT CHIEF, ENGINEERING DATE

| No. | REVISION | APPROVED BY | DATE |
|-----|----------|-------------|------|
|     |          |             |      |

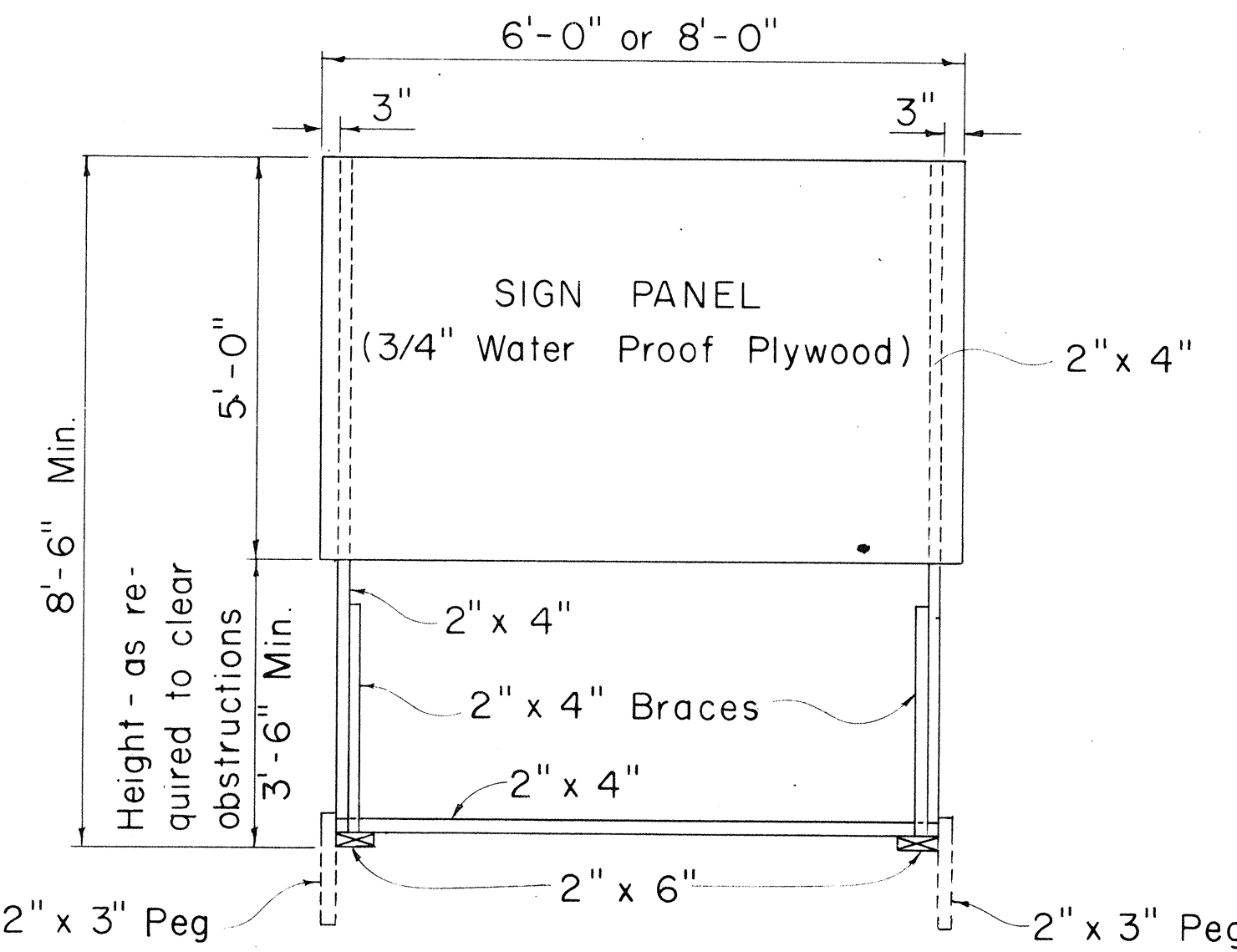
STATE OF HAWAII  
DEPARTMENT OF TRANSPORTATION  
HIGHWAYS DIVISION

**STANDARD DETAILS  
RAISED PAVEMENT MARKERS**

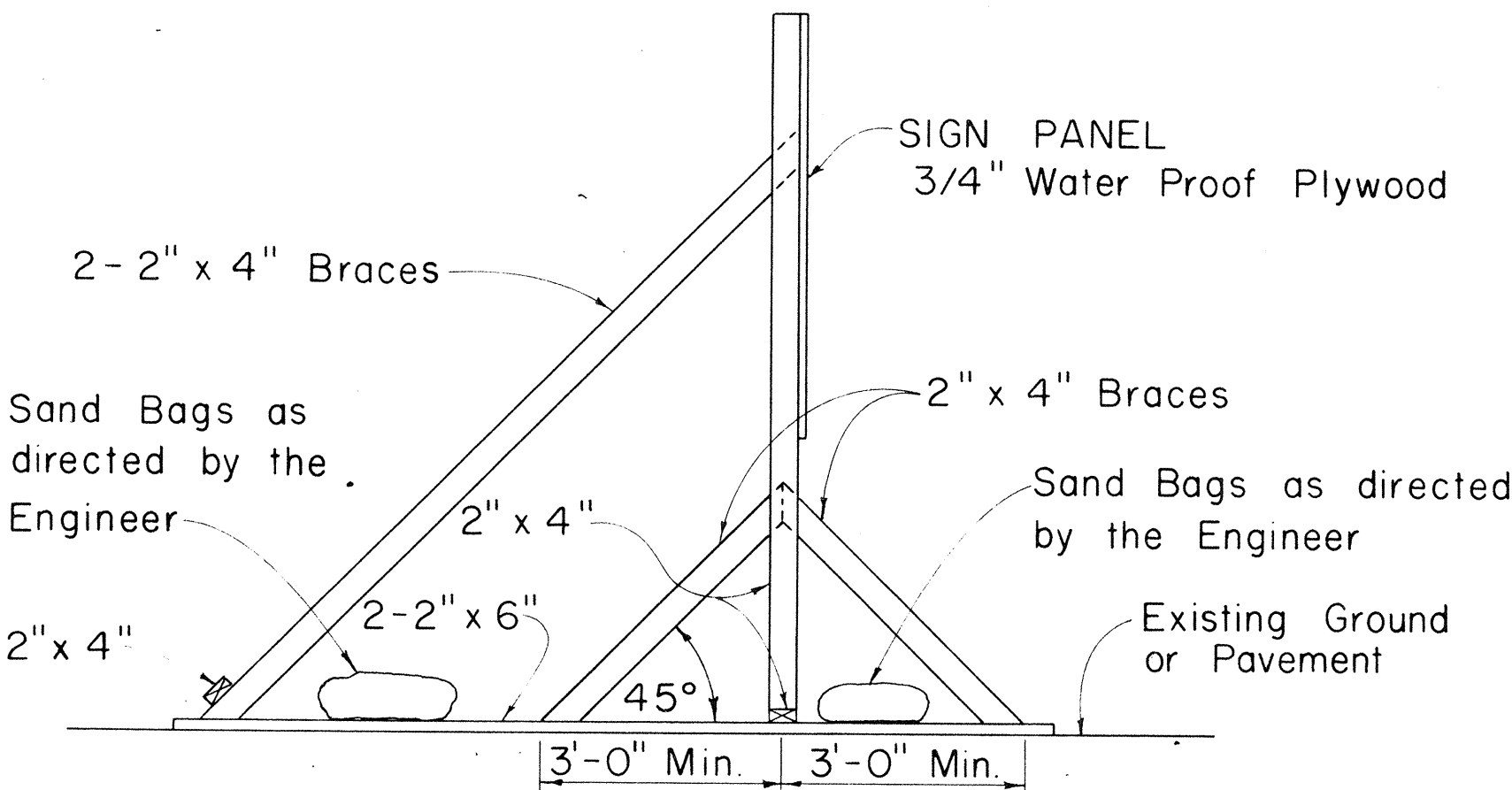
Not to Scale October 1971

SHEET No. 2 OF 3 SHEETS DT 300

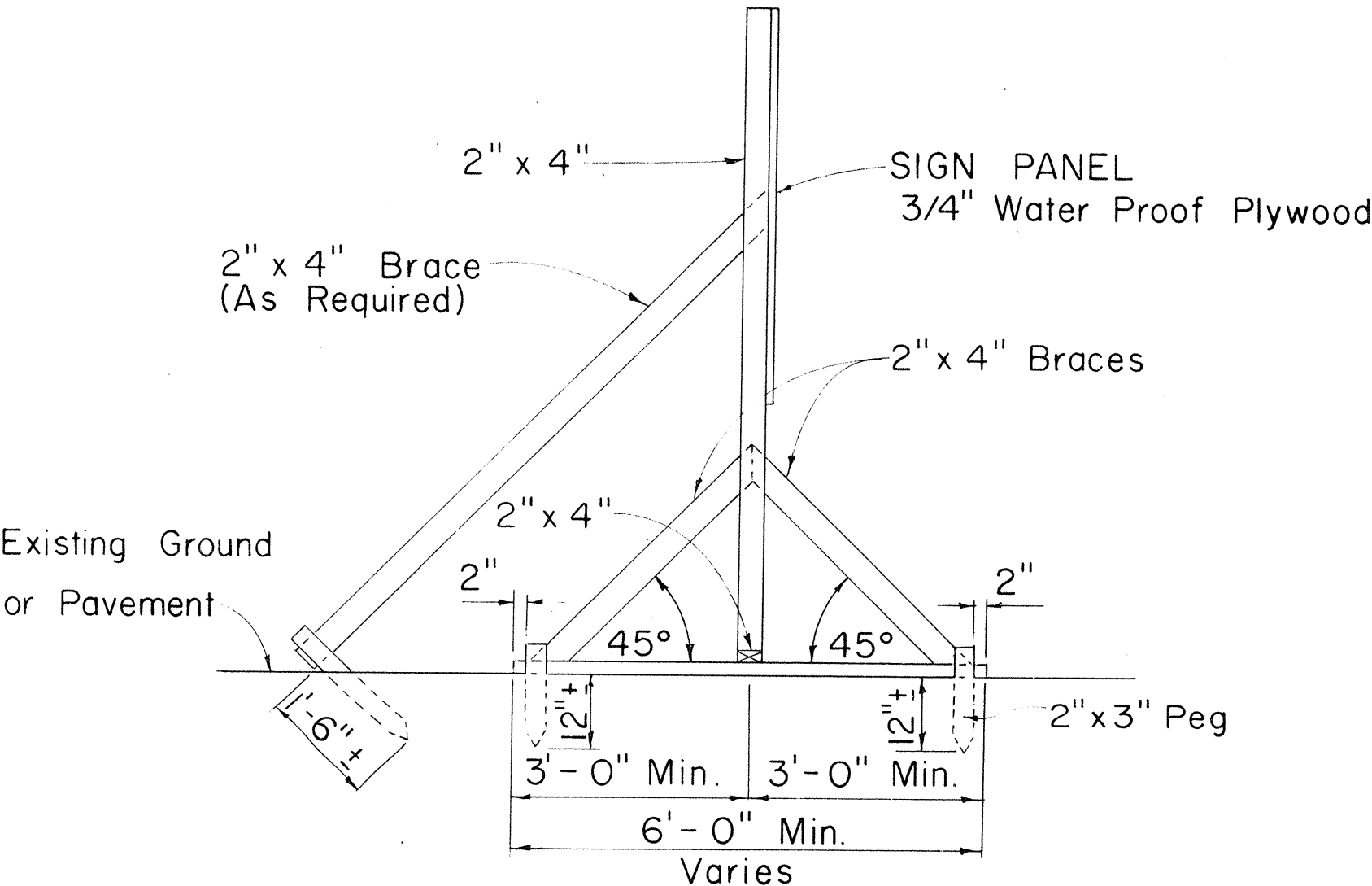
| FED. ROAD DIST. NO. | STATE | PROJ. NO. | FISCAL YEAR | SHEET NO. | TOTAL SHEETS |
|---------------------|-------|-----------|-------------|-----------|--------------|
| HAWAII              | HAW.  | 11P-01-71 | 1971        | 10        | 12           |



FRONT VIEW  
Scale: 1/2" = 1'-0"

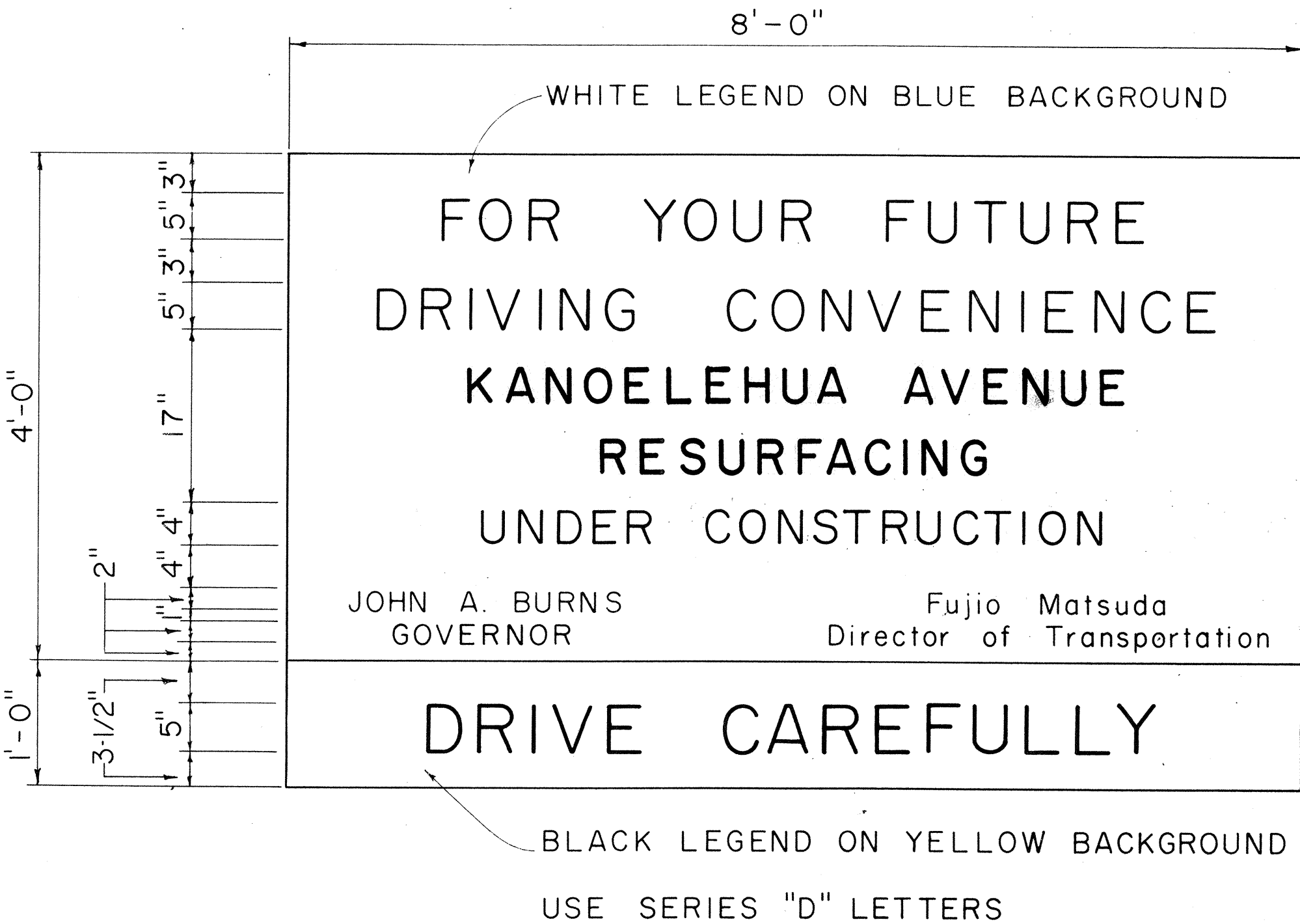


SIDE VIEW  
(SIGN SUPPORT AND FRAME WEIGHTED DOWN)  
Scale: 1/2" = 1'-0"



SIDE VIEW  
(SIGN SUPPORT AND FRAME ANCHORED IN GROUND)  
Scale: 1/2" = 1'-0"

SIGN SUPPORT AND FRAME  
Scale: As Shown



- GENERAL NOTES
- The sign panels will be constructed by the State and will be available for pick up by the Contractor from the State Highway Maintenance Yard.
  - The Contractor shall construct the sign supports and frames and install the sign panels at the locations shown on the plans and as ordered by the Engineer.
  - At the end of construction the Contractor shall remove the sign panels and return it to the State Highway Maintenance Yard. Sign supports and frames shall be removed and cleared from the project site.

STATE OF HAWAII  
DEPARTMENT OF TRANSPORTATION  
HIGHWAYS DIVISION

TYPICAL DETAILS  
  
PROJECT INFORMATION SIGN

Scale: As Shown  
SHEET No. 3 OF 3 SHEETS

|                   |      |
|-------------------|------|
| SURVEY PLOTTED BY | DATE |
| DESIGNED BY       |      |
| NOTED BY          |      |
| CHECKED BY        |      |
| ORIGINAL PLAN     |      |
| NOTE BOOK         |      |
| No.               |      |