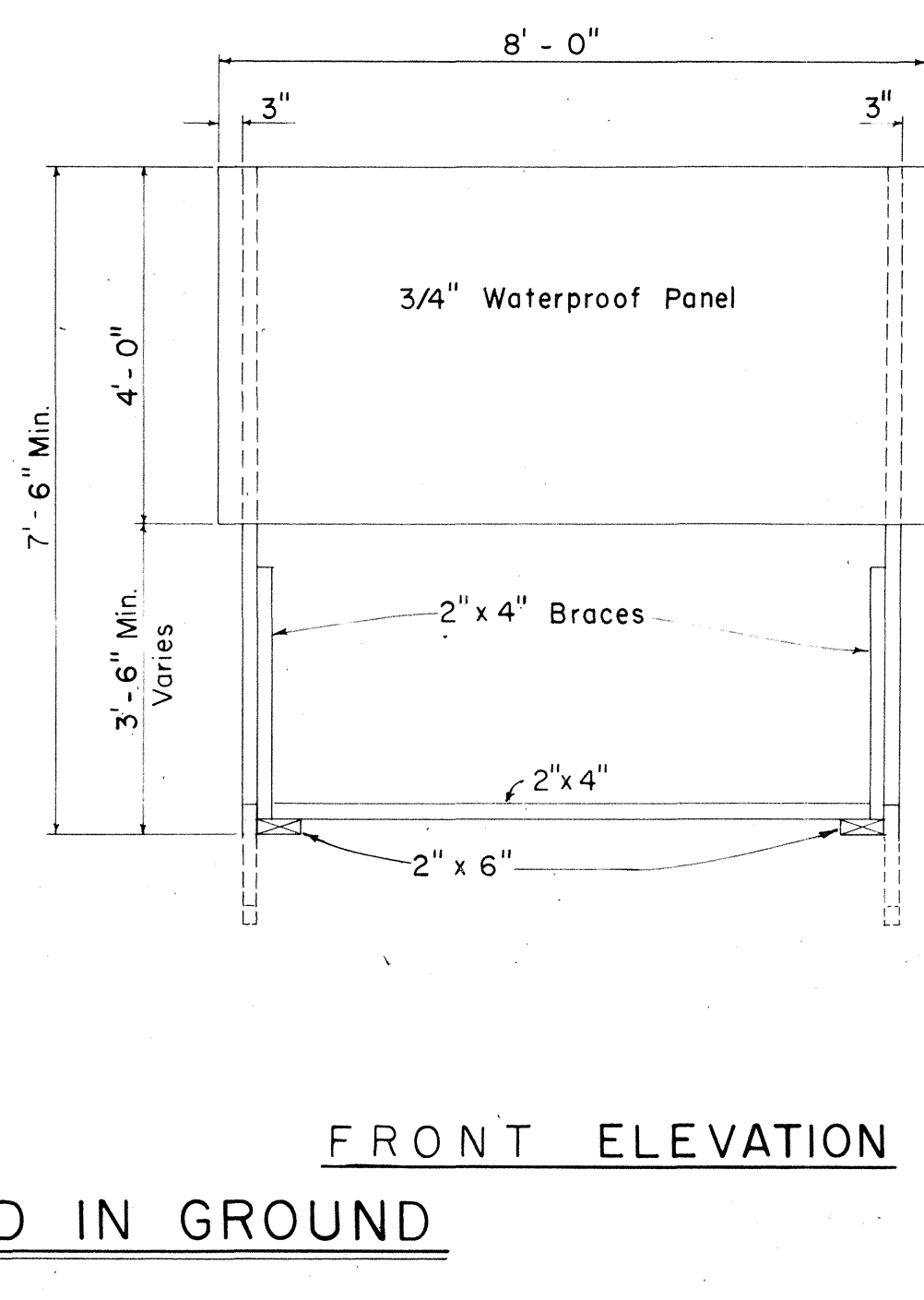
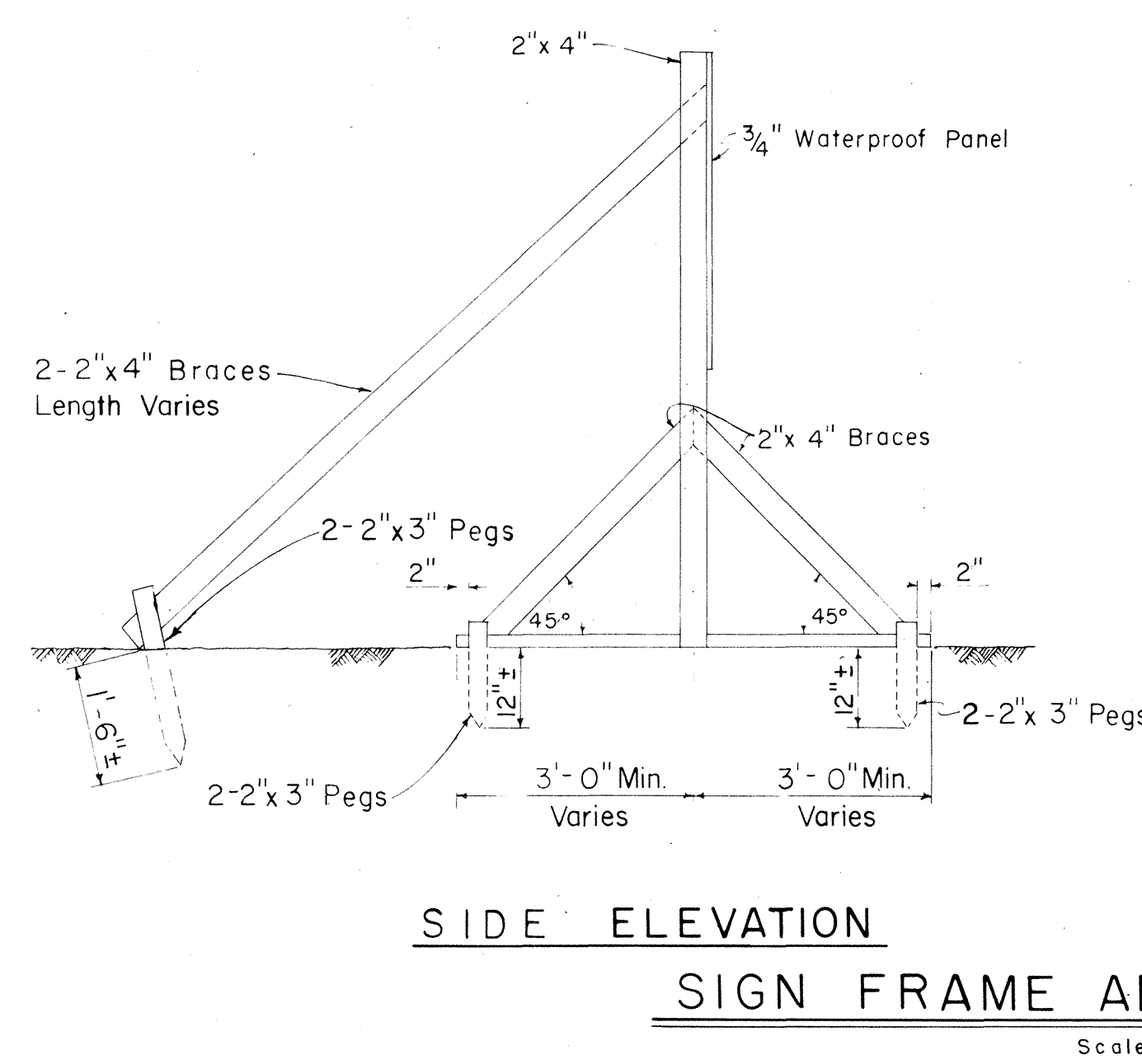
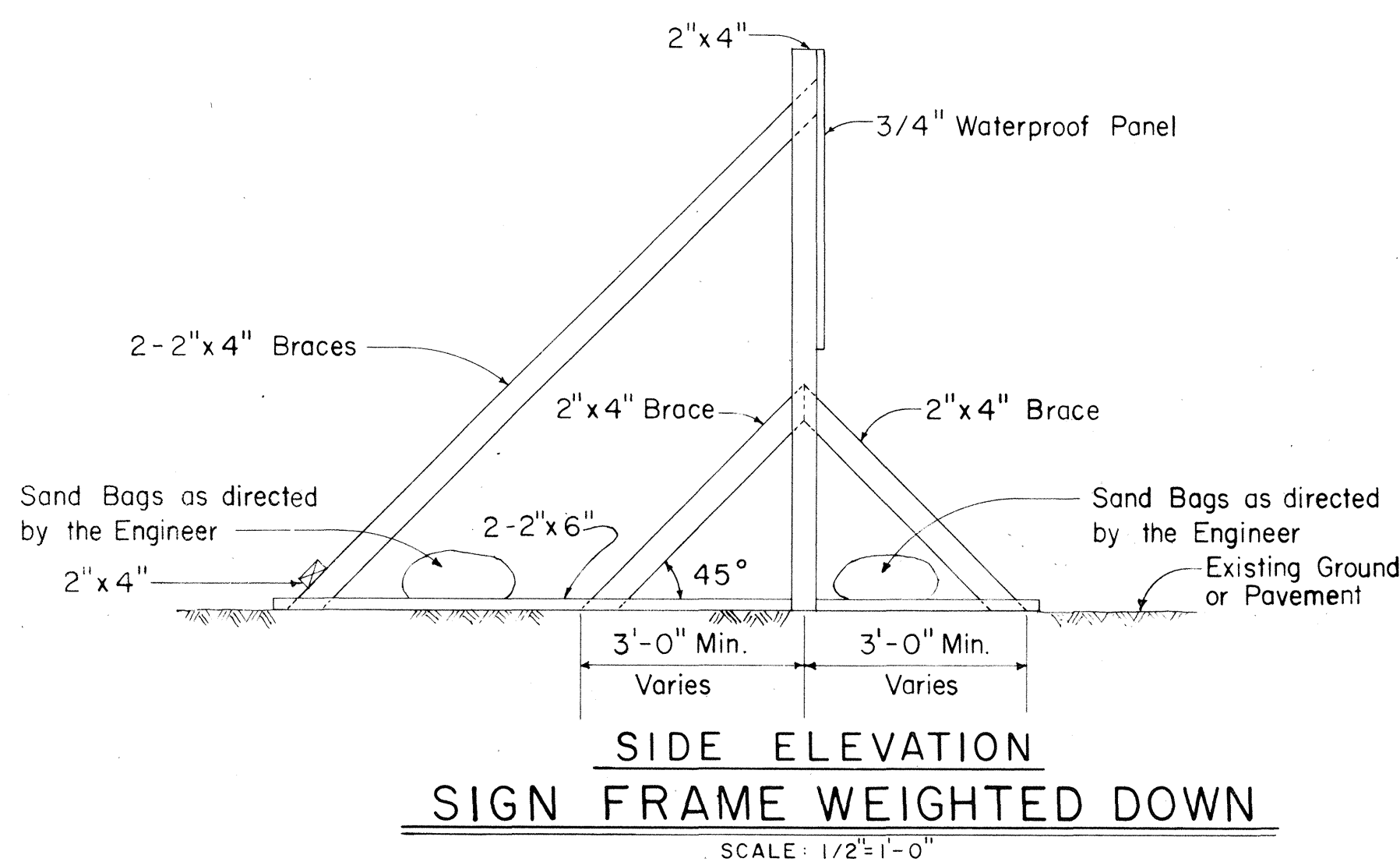
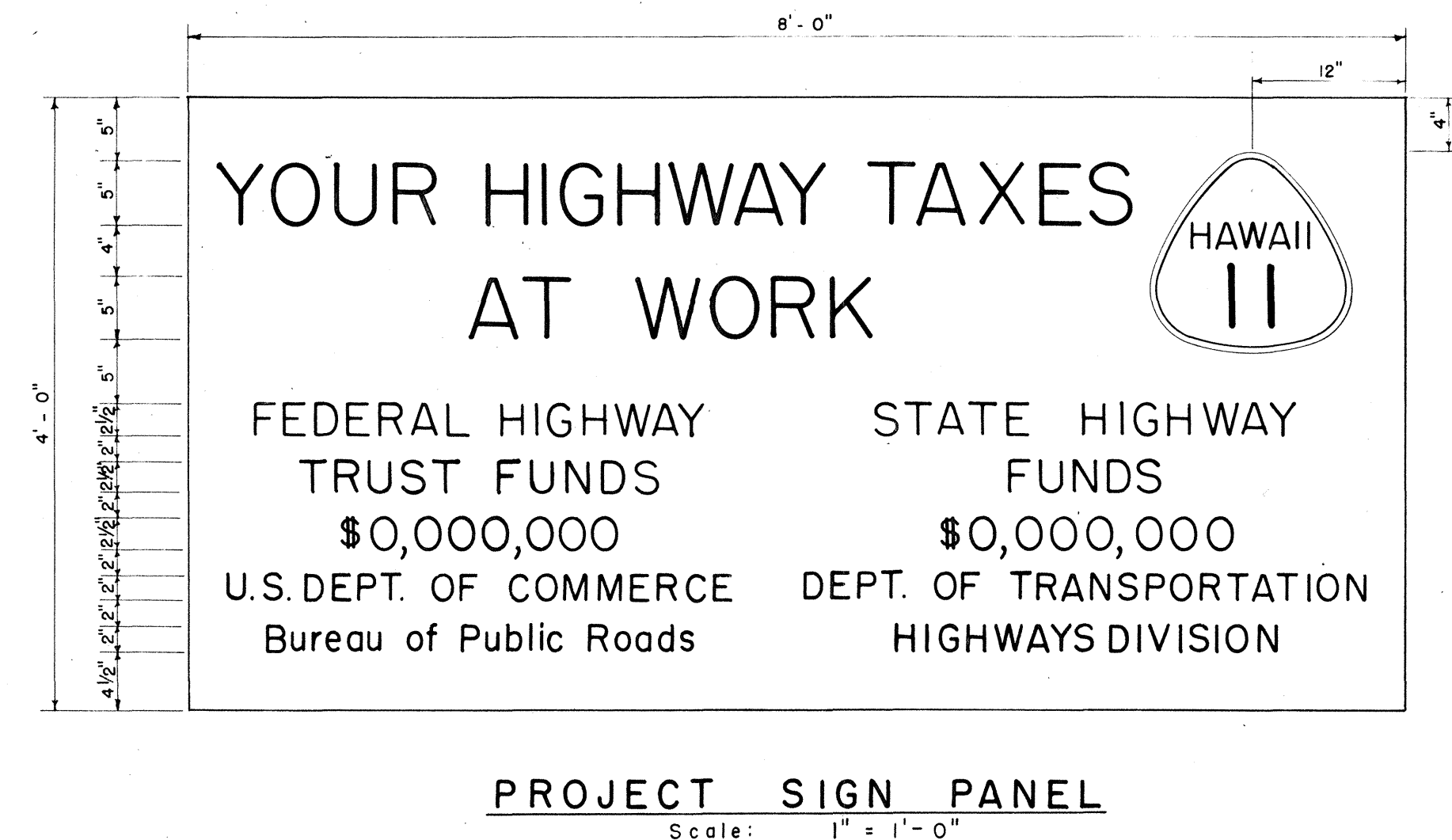


| FED. ROAD DIST. NO. | STATE | FED. AID PROJ. NO. | FISCAL YEAR | SHEET NO. | TOTAL SHEETS |
|---------------------|-------|--------------------|-------------|-----------|--------------|
| HAWAII              | HAW.  | F-011-2(5)         | 1967        | 11        | 47           |



**PROJECT SIGN NOTES**

1. The Contractor shall construct, install and maintain the Project Signs, at the locations shown on the plans and as ordered by the Engineer.
2. All costs incurred in the construction, installation and maintenance of the Project Signs, will not be paid for separately, but shall be considered as included in the unit price paid for the various items in the proposal.
3. The Project Signs shall be removed and stock-piled at the completion of the project as ordered by the Engineer and are to become State Property.
4. The exact figures for the various funds involved will be furnished to the Contractor for the incorporation in the Project Signs.
5. The legend shall be black on white background unless otherwise specified.
6. Refer to Sheet No. 22 for details on the exact shape and size of the State route marker to be shown on these Project Signs.
7. All letters shall be of size and design shown and shall conform with "Standard Alphabets for Highway Signs", Bureau of Public Roads, 1952. Use Series "C" letters unless otherwise noted.



**PROJECT IDENTIFICATION SIGN**  
Scale: As Shown

|               |      |
|---------------|------|
| ORIGINAL PLAN | DATE |
| DESIGNED BY   |      |
| TRACED BY     |      |
| NOTED BY      |      |
| CHECKED BY    |      |
| NO.           |      |

STATE OF HAWAII  
DEPARTMENT OF TRANSPORTATION

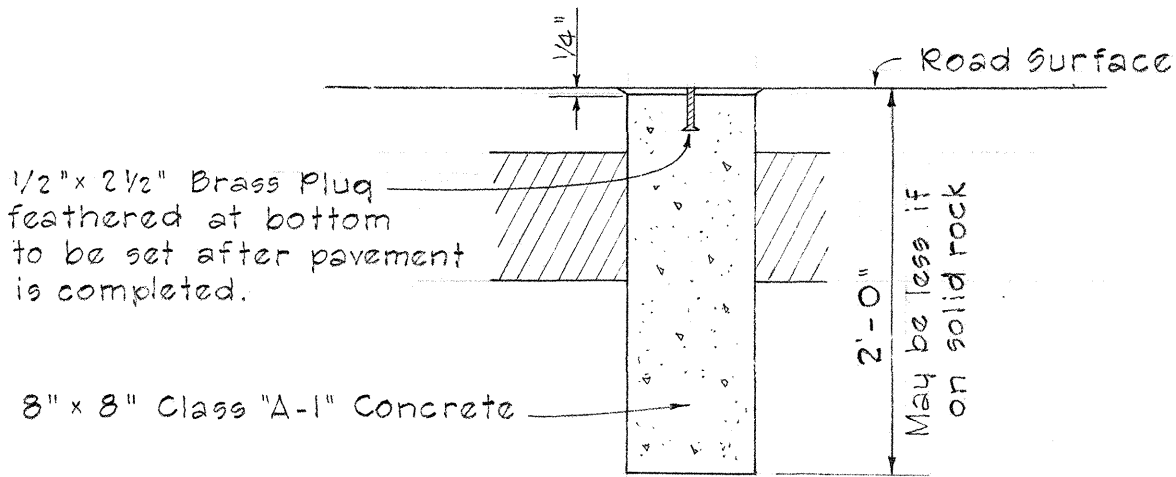
MISCELLANEOUS DETAILS

Volcano Rd. Glenwood Section F-011-2(5)

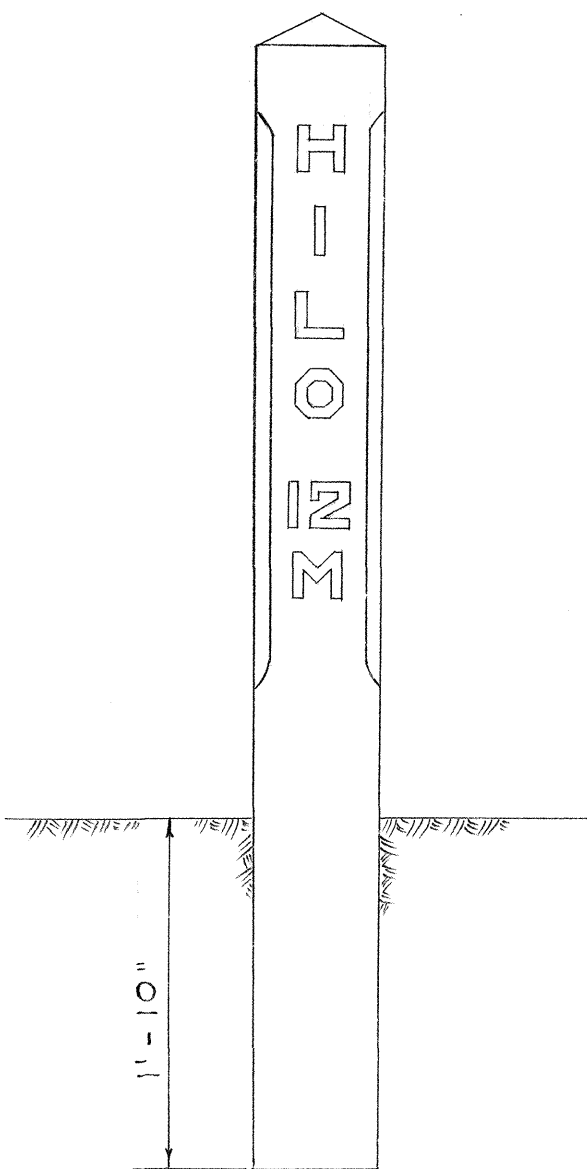
Scale: As Noted July 1965

SHEET No. 1 OF 2 SHEETS

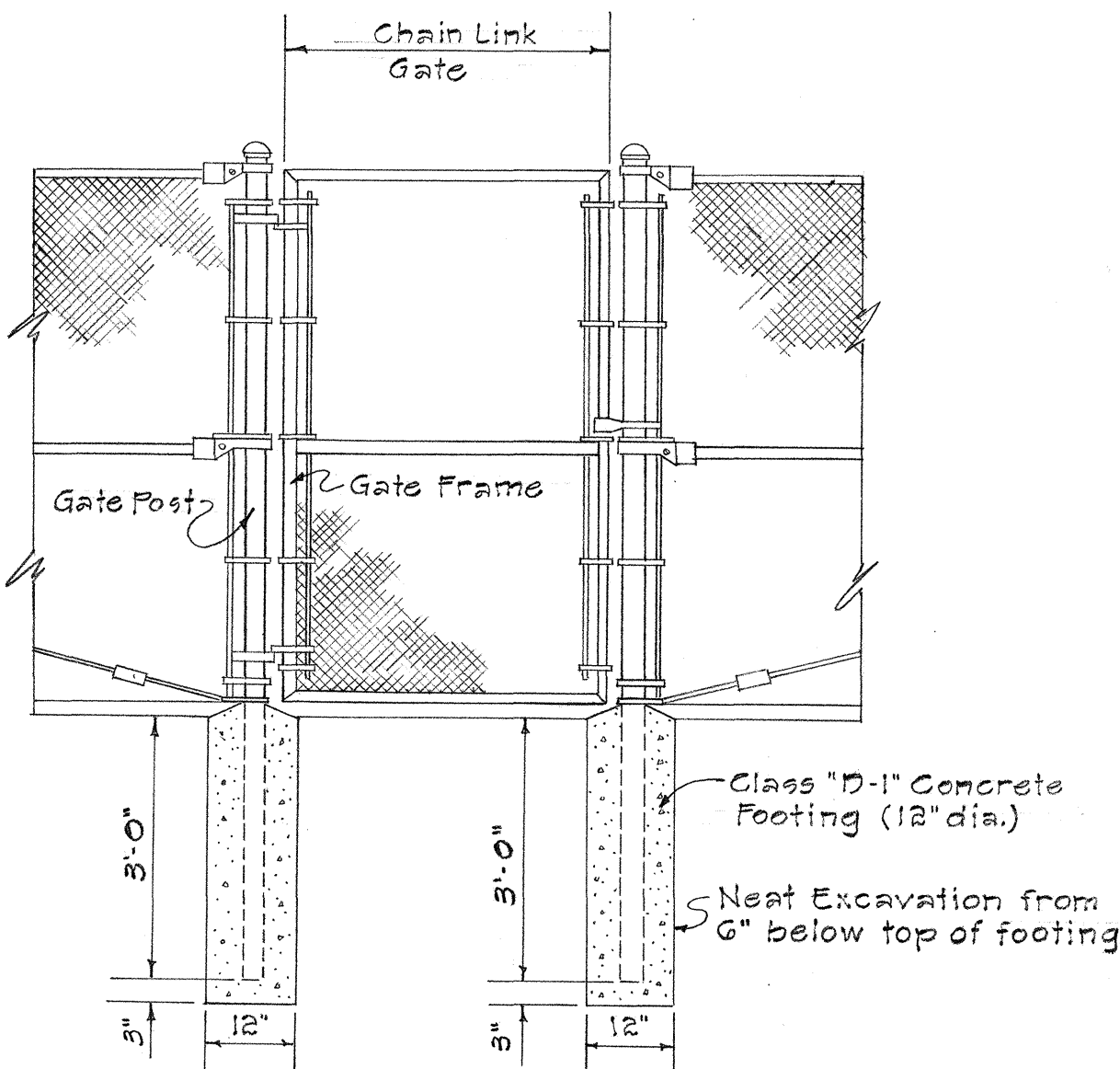
| FED. ROAD DIST. NO. | STATE | FED. AID PROJ. NO. | FISCAL YEAR | SHEET NO. | TOTAL SHEETS |
|---------------------|-------|--------------------|-------------|-----------|--------------|
| HAWAII              | HAW.  | F-011-2(5)         | 1967        | 12        | 47           |



CENTERLINE MONUMENT  
Scale : 1" = 1'-0"



DETAIL FOR RELOCATED MILE POSTS  
Scale : 1" = 1'-0"



DETAIL OF CONCRETE FOOTING FOR  
CHAIN LINK GATE

Not to Scale

|             |      |
|-------------|------|
| DESIGNED BY | DATE |
| DRAWN BY    |      |
| CHECKED BY  |      |
| NOTED BY    |      |
| NO.         |      |

STATE OF HAWAII  
DEPARTMENT OF TRANSPORTATION  
HIGHWAYS DIVISION

MISCELLANEOUS DETAILS

Volcano Rd. Glenwood Section F-011-2(5)  
Scale: As Noted July 1965

SHEET No. 2 OF 2 SHEETS