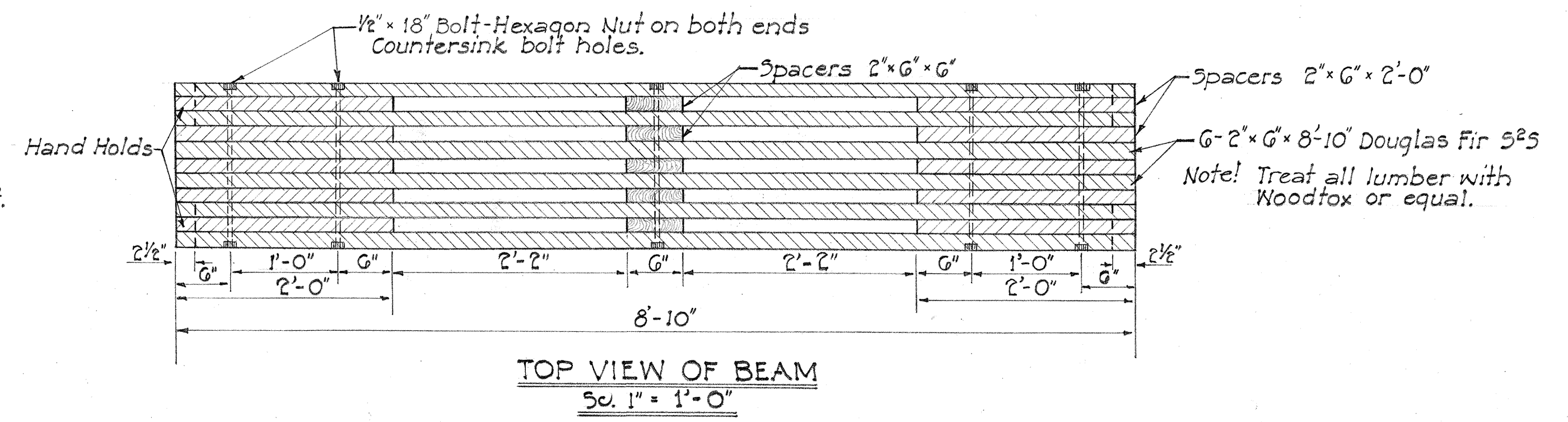
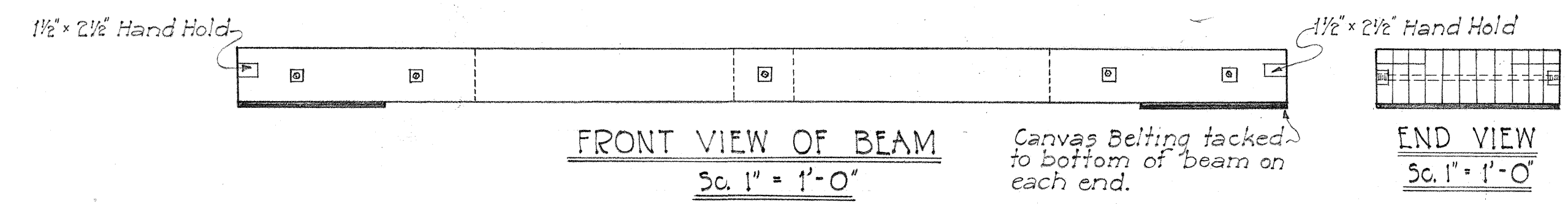


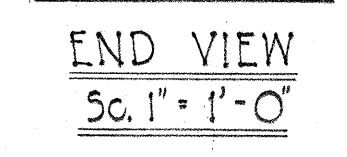
SECTION A-A
Sc. 1" = 1'-0"



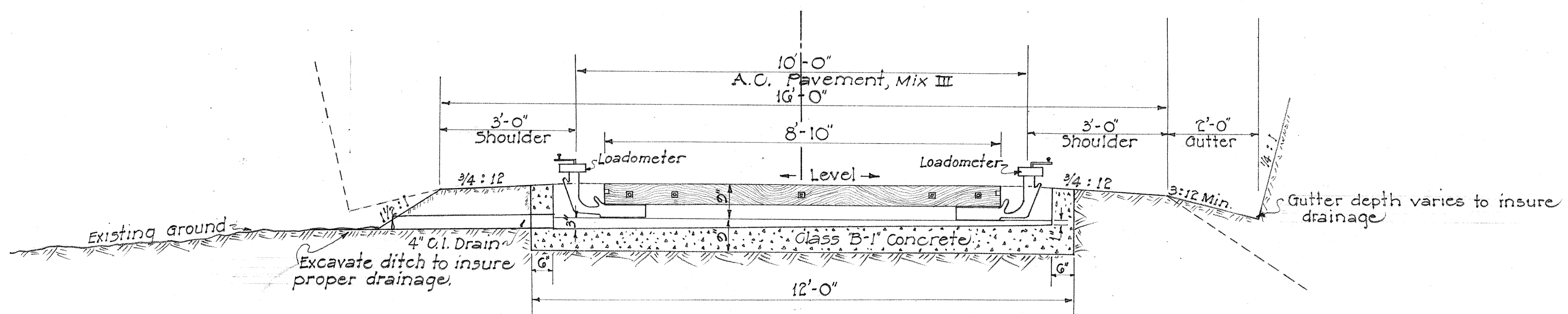
TOP VIEW OF BEAM
Sc. 1" = 1'-0"



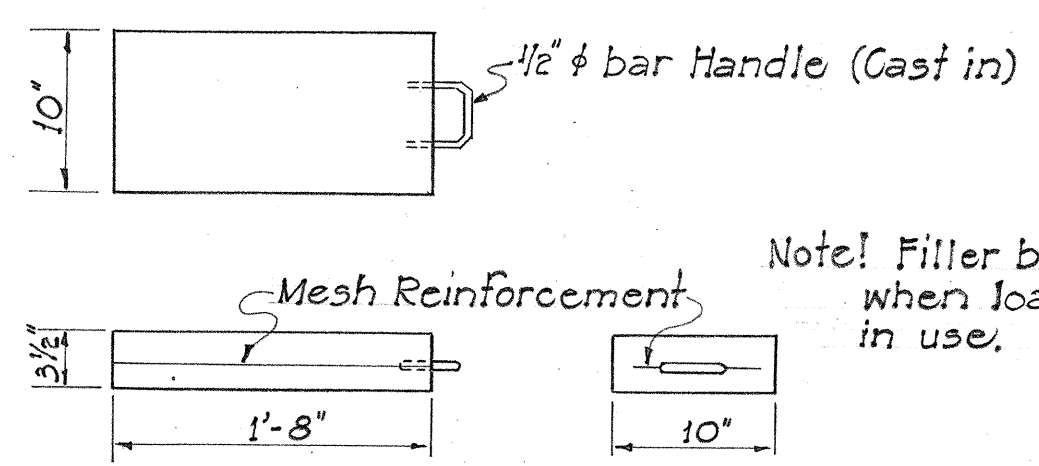
FRONT VIEW OF BEAM
Sc. 1" = 1'-0"



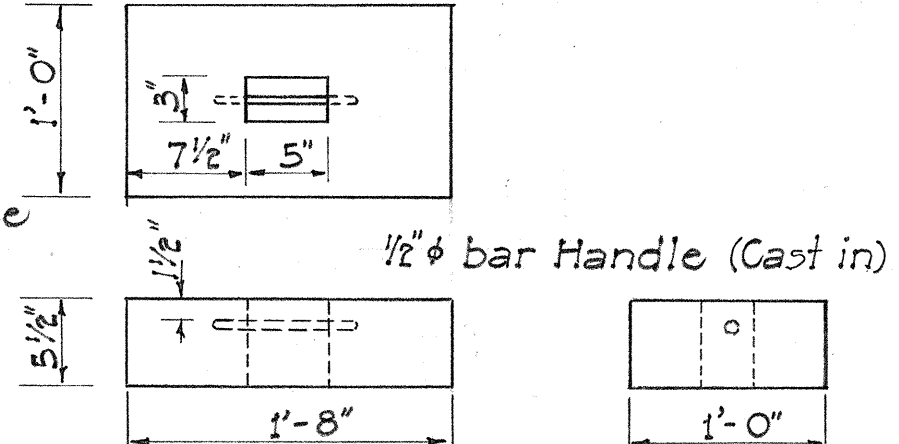
END VIEW
Sc. 1" = 1'-0"



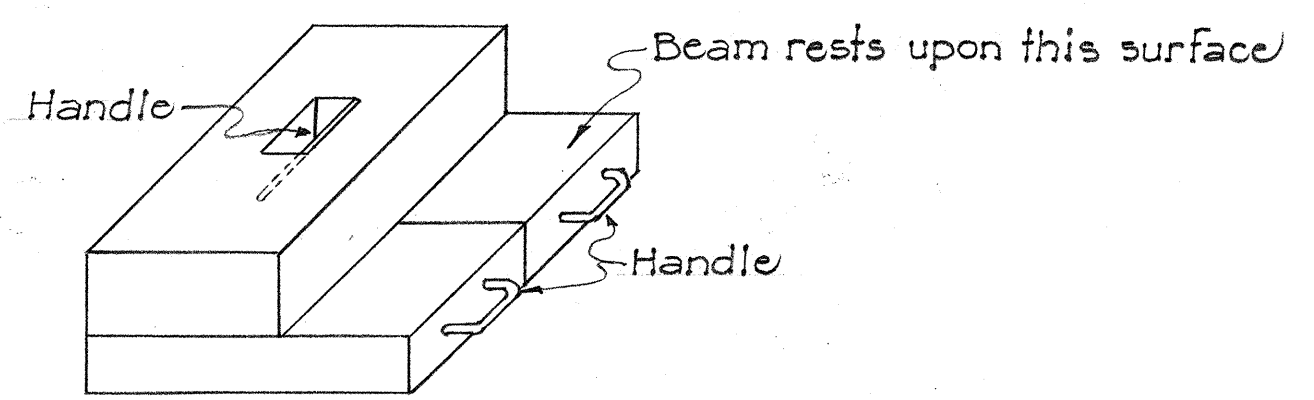
SECTION B-B
Sc. 1/2" = 1'-0"



CONCRETE FILLER BLOCK (Make 4 per pit)
Sc. 1" = 1'-0"



CONCRETE FILLER BLOCK (Make 2 per pit)
Sc. 1" = 1'-0"



FILLER BLOCK ASSEMBLY (One for each end)
Sc. 1/2" = 1'-0"

Note! Filler blocks to fill space when loadometer is not in use.

Class B-1 Concrete

SURVEY PLOTTED BY
 DESIGNED BY
 DRAWN BY
 NOTE BOOK QUANTITIES CHECKED BY
 ORIGINAL PLAN No.
 DATE

TERRITORIAL HIGHWAY DEPARTMENT
 TERRITORY OF HAWAII
 LOADOMETER WEIGHING STATION
 Sc. As Noted