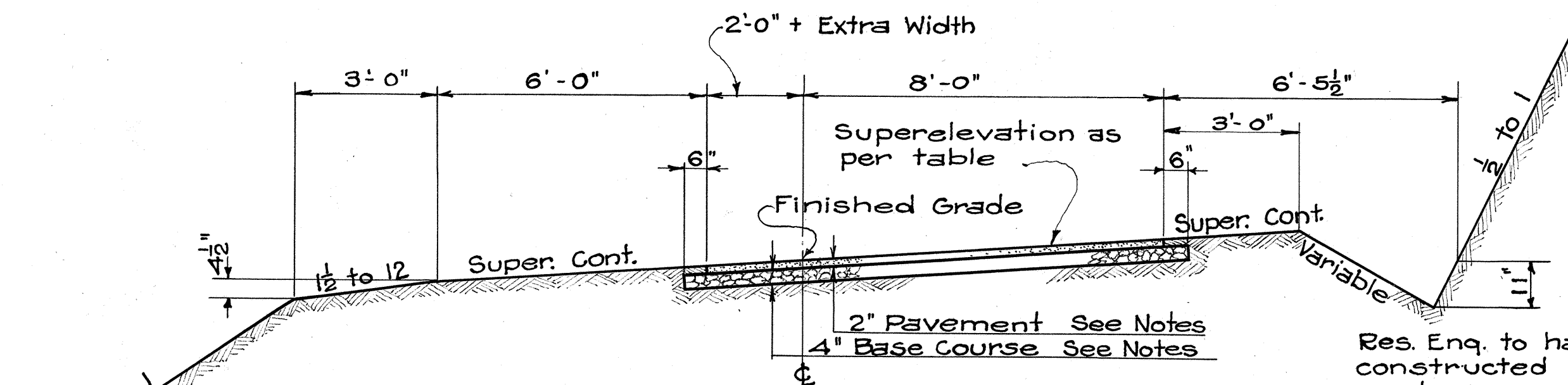


TYPICAL ROAD SECTION ON TANGENTS
Scale $\frac{3}{8}" = 1'-0"$



TYPICAL ROAD SECTIONS ON CURVES
WITH SUPERELEVATION AND EXTRA WIDTH
Scale $\frac{3}{8}" = 1'-0"$

NOTES ON BASE COURSE AND PAVEMENT

BASE COURSE: Base course shall be a Crusher Run Base Course.

CRUSHER RUN BASE COURSE: 4" (compacted thickness) Crusher Run Material (20% wear).

PAVEMENT: The 2" pavement shall be either an "Asphaltic Macadam Surface Course" and "Seal Coat" or a "Cold Emulsified Asphalt Pavement" these being as noted below.

ASPHALTIC MACADAM SURFACE COURSE: 2" (compacted thickness) No. 2 Crushed Rock (2" to 1") 10 lbs. per sq. yd. of asphalt (85-100) and sufficient No. 3 Crushed Rock (1" to 5/8") to cover.

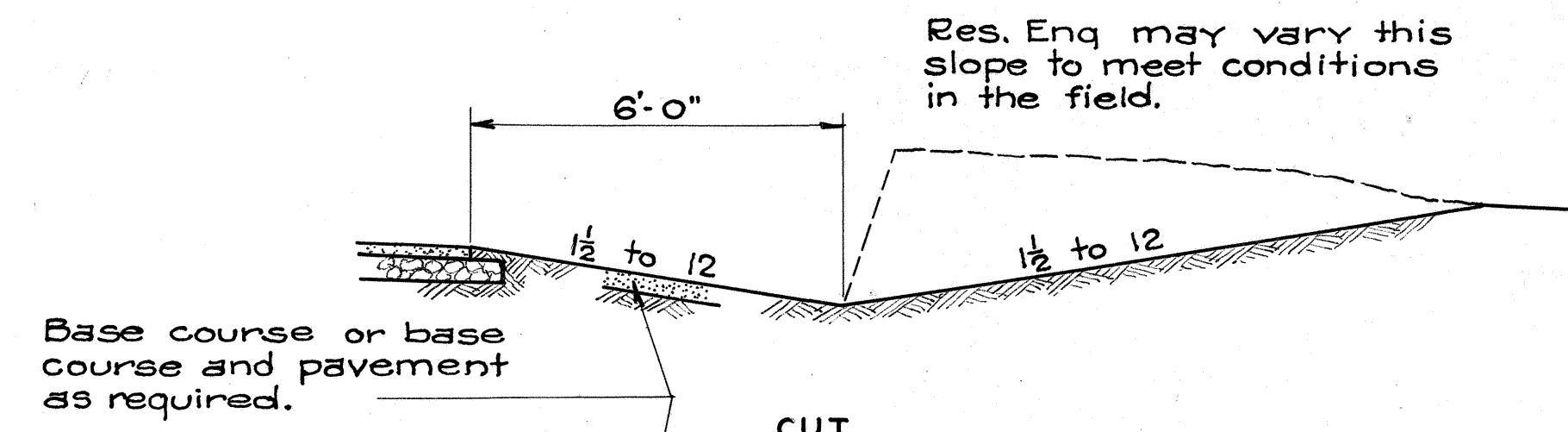
SEAL COAT: 3 to 4 lbs. per sq. yd. of asphalt (85-100) and sufficient No. 6 Crushed Rock (1/4" to 3/8") to cover.

COLD EMULSIFIED ASPHALT PAVEMENT: 2" (compacted thickness) No. 2 Crushed Rock (2" to 1") filled to within one inch of top with No. 5 Crushed Rock (3/8" to #10); 5/8 to 3/4 gal. per sq. yd. of Emulsion and sufficient Fine No. 4 Crushed Rock (3/8" to 1/2") to key surface; 3/4 to 1 gal. per sq. yd. of Emulsion and sufficient No. 5 Crushed Rock (3/8" to #10) to complete surface keying; 3/8 to 1/2 gal. per sq. yd. of Emulsion and sufficient No. 6 Crushed Rock (1/4" to #20) to cover.

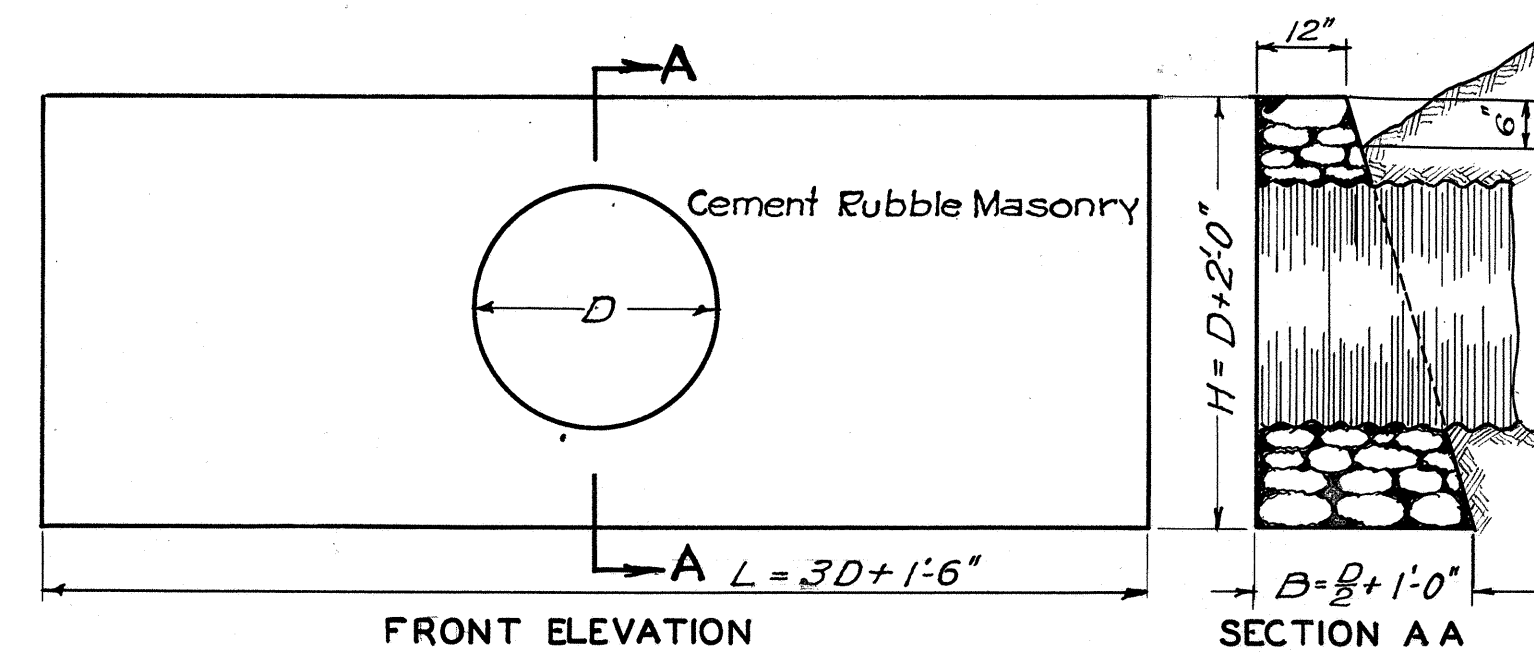
GENERAL NOTES: Particular reference is made to the specifications covering these items of work.

SPECIAL SHOULDER TREATMENT: Open gravel surface with 1/2 gal. per sq. yd. of Emulsified Asphalt and cover of special No. 6 Crushed Rock (1/4" to Dust.)

Note:
1/2 to 1 Cut slopes and 1/2 to 1 fill slopes may be changed by Engineer to suit materials encountered.



TYPICAL SECTIONS OF DRIVEWAYS
Scale: $\frac{3}{8}" = 1'-0"$



STANDARD MASONRY HEADWALL
Scale $\frac{1}{2}" = 1'-0"$

DATA STD. R.M. HEADWALL				
D	H	B	L	CY. ONE HW.
18"	3'-6"	1'-9"	6'-0"	0.93
24"	4'-0"	2'-0"	7'-6"	1.41
30"	4'-6"	2'-3"	9'-0"	2.00
36"	5'-0"	2'-6"	10'-6"	2.72

Note:
Volume for one headwall is for corrugated pipe culvert.