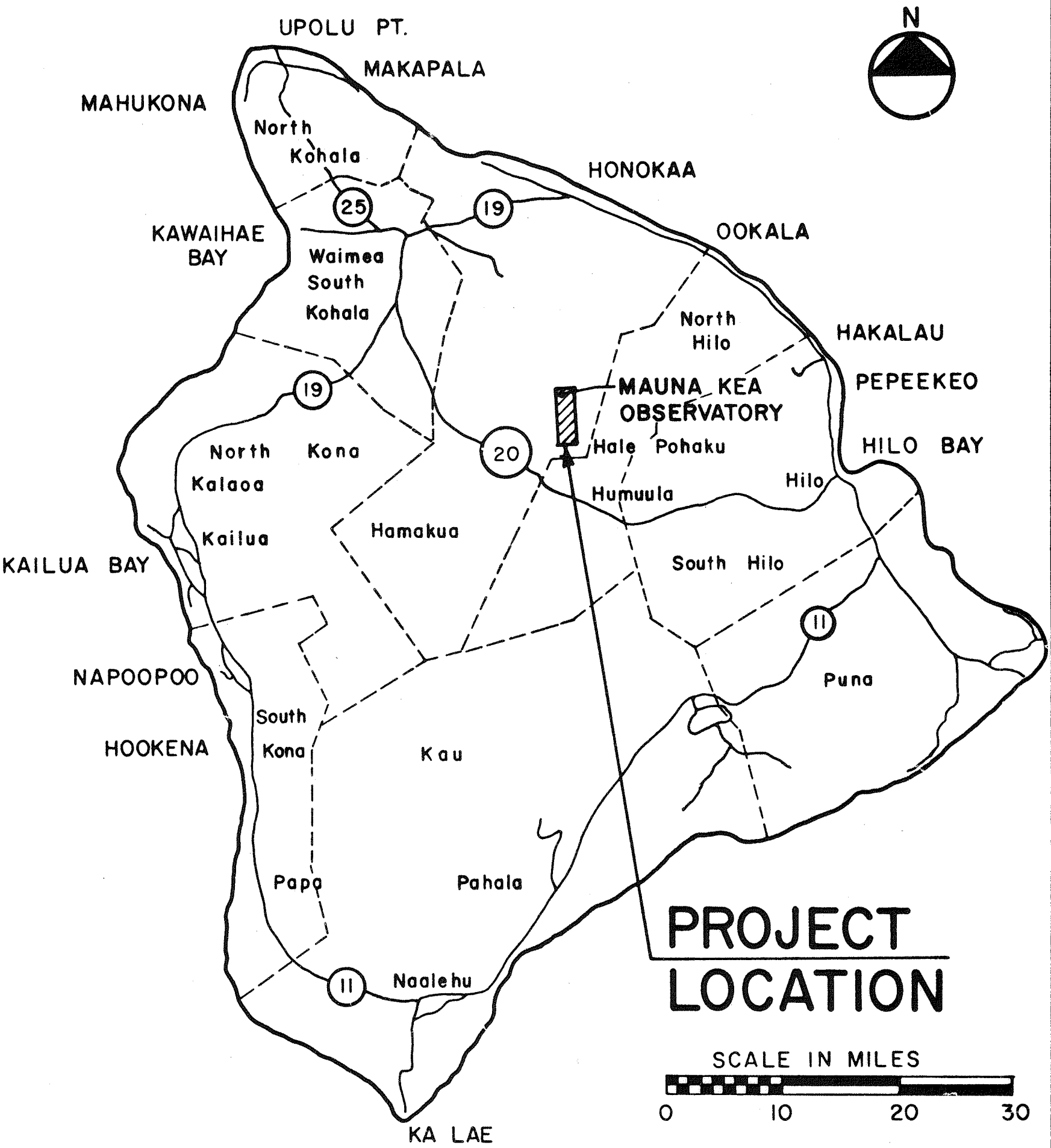


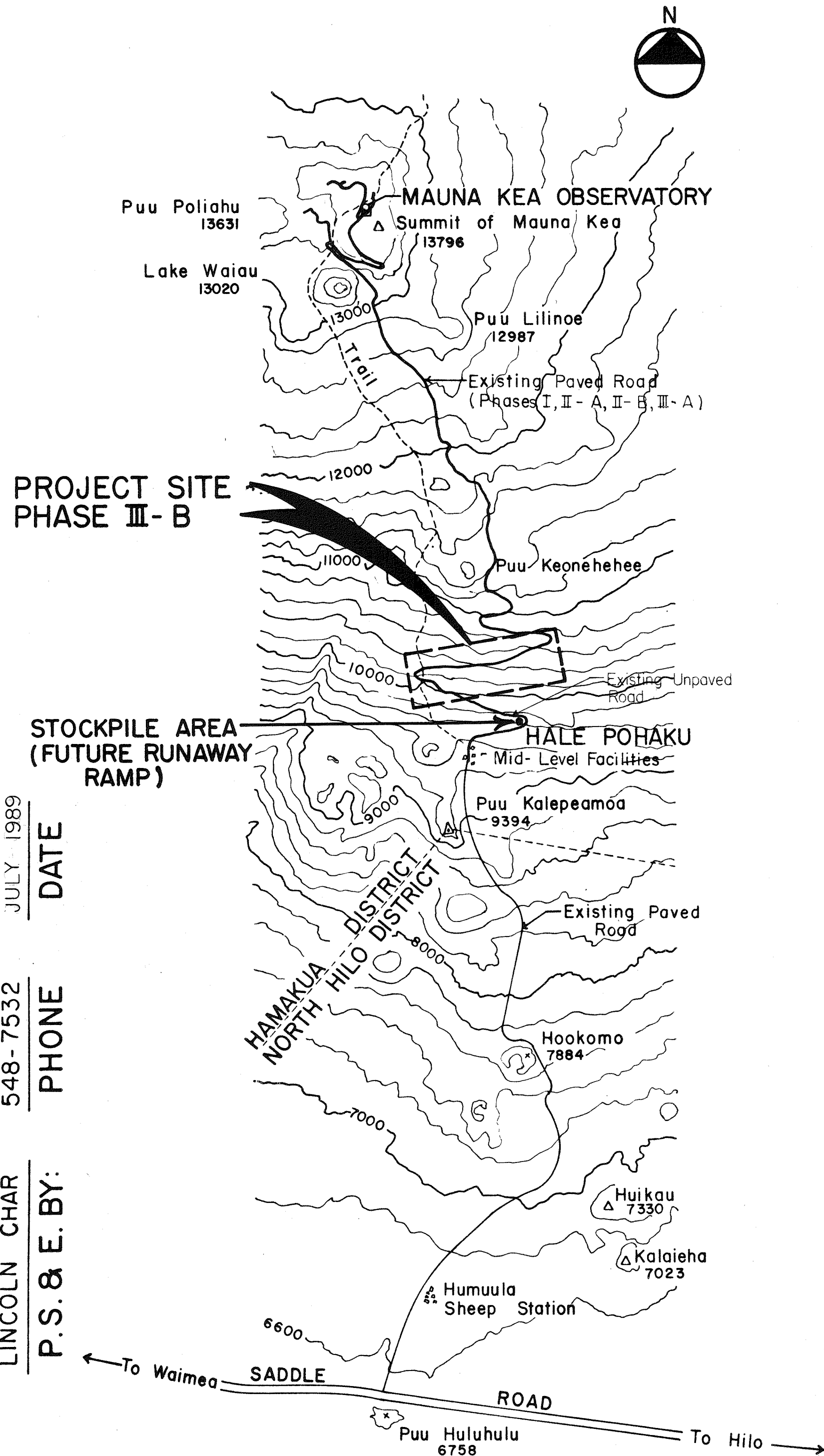
FED. ROAD DIST. NO.	STATE	PROJ. NO.	FISCAL YEAR	SHEET NO.	TOTAL SHEETS
HAWAII	HAW.			1	53



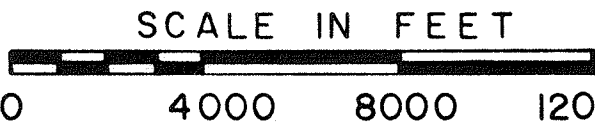
ISLAND OF HAWAII

STATE OF HAWAII  
DEPARTMENT OF TRANSPORTATION  
HIGHWAYS DIVISION  
PLANS FOR CONSTRUCTION OF  
**MAUNA KEA OBSERVATORY  
ACCESS ROAD**  
SUMMIT OF MAUNA KEA TO HALE POHAKU  
**PHASE III - B    STA. 47+00 TO STA. 134+50**

DISTRICT OF HAMAKUA  
ISLAND OF HAWAII



GENERAL CONSTRUCTION SITE PLAN



LENGTH OF PROJECT = 1.7 MILES

INDEX TO DRAWINGS	
SHEET NO.	DESCRIPTION
1	TITLE SHEET
2	STANDARD PLANS SUMMARY
3	SHEET LAYOUT PLANS, FIELD OFFICE AND BATCH PLANT LOCATION MAPS
4	NOTES, ABBREVIATIONS AND LEGEND
5 - 7	ALIGNMENT PLAN
8	TYPICAL ROAD SECTIONS
9 - 17	PLAN, PROFILE AND GRADING
18	TRAFFIC CONTROL PLANS
19 - 20	MISCELLANEOUS DETAILS
21 - 23	RETAINING WALL DETAILS
24 - 26	DRAIN DETAILS
27 - 28	CULVERT PROFILES
29	DITCH PROFILES
30 - 31	RUNAWAY RAMP PROFILE AND DETAILS
32	GUARDRAIL DETAILS
33	MISCELLANEOUS SIGN DETAILS
34	BORING AND TEST PIT LOGS AND NOTES
35 - 53	CROSS SECTIONS

**DESIGN CLASSIFICATION**

DESIGN ADT (2006) . . . . .150  
DHV . . . . . 20  
D . . . . . 50/50  
T . . . . . 7  
V . . . . . 25 MPH

STATE OF HAWAII  
UNIVERSITY OF HAWAII

APPROVED:

DIRECTOR OF CAMPUS OPERATIONS  
UNIVERSITY OF HAWAII AT MANOA

DATE

STATE OF HAWAII  
DEPARTMENT OF TRANSPORTATION  
HIGHWAYS DIVISION

APPROVED:

DIRECTOR OF TRANSPORTATION

DATE

ORIGINAL PLAN	SURVEY PLOTTED BY	DATE
NOTE BOOK	DRAWN BY	
	CHECKED BY	
	QUANTITIES BY	
	CHECKED BY	

DESIGN BY: LINCOLN CHAR JULY 1989 DATE 548-7532 PHONE P.S. & E. BY:

FUKUNAGA & ASSOCIATES, INC.