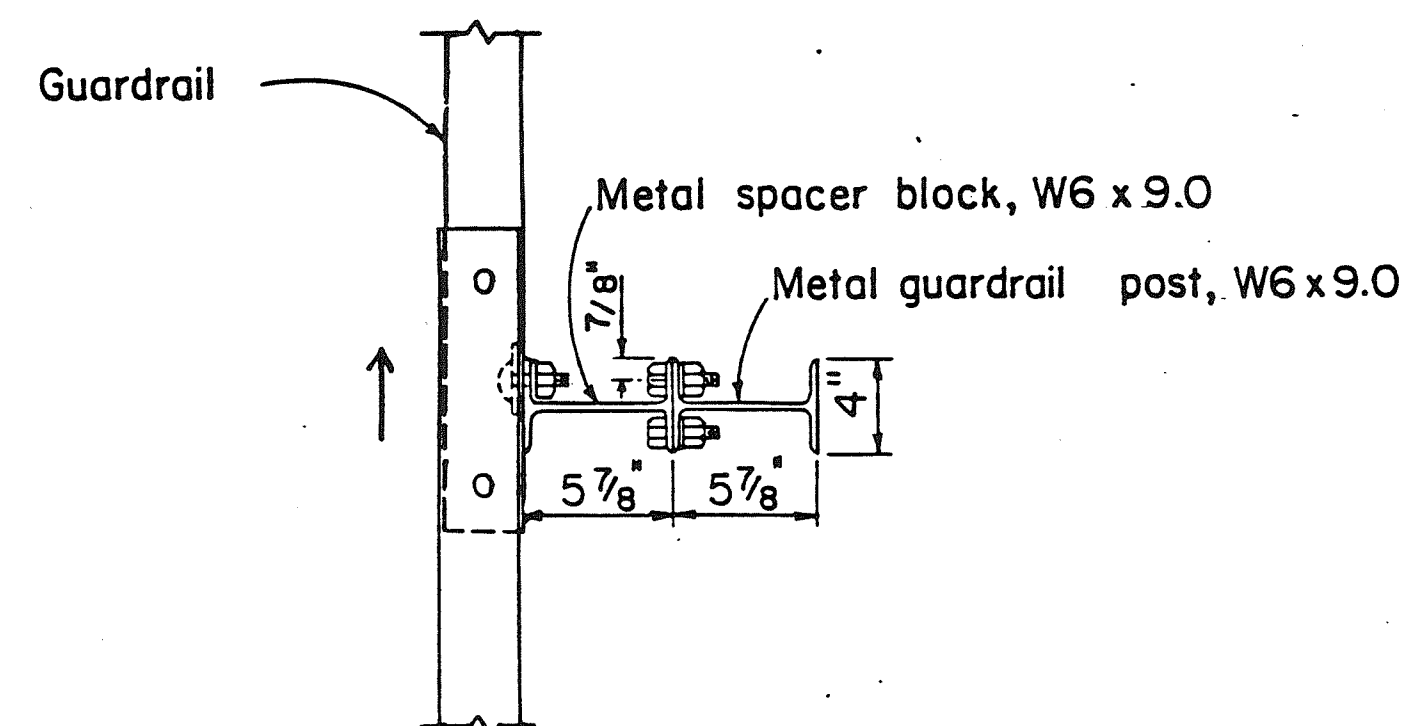


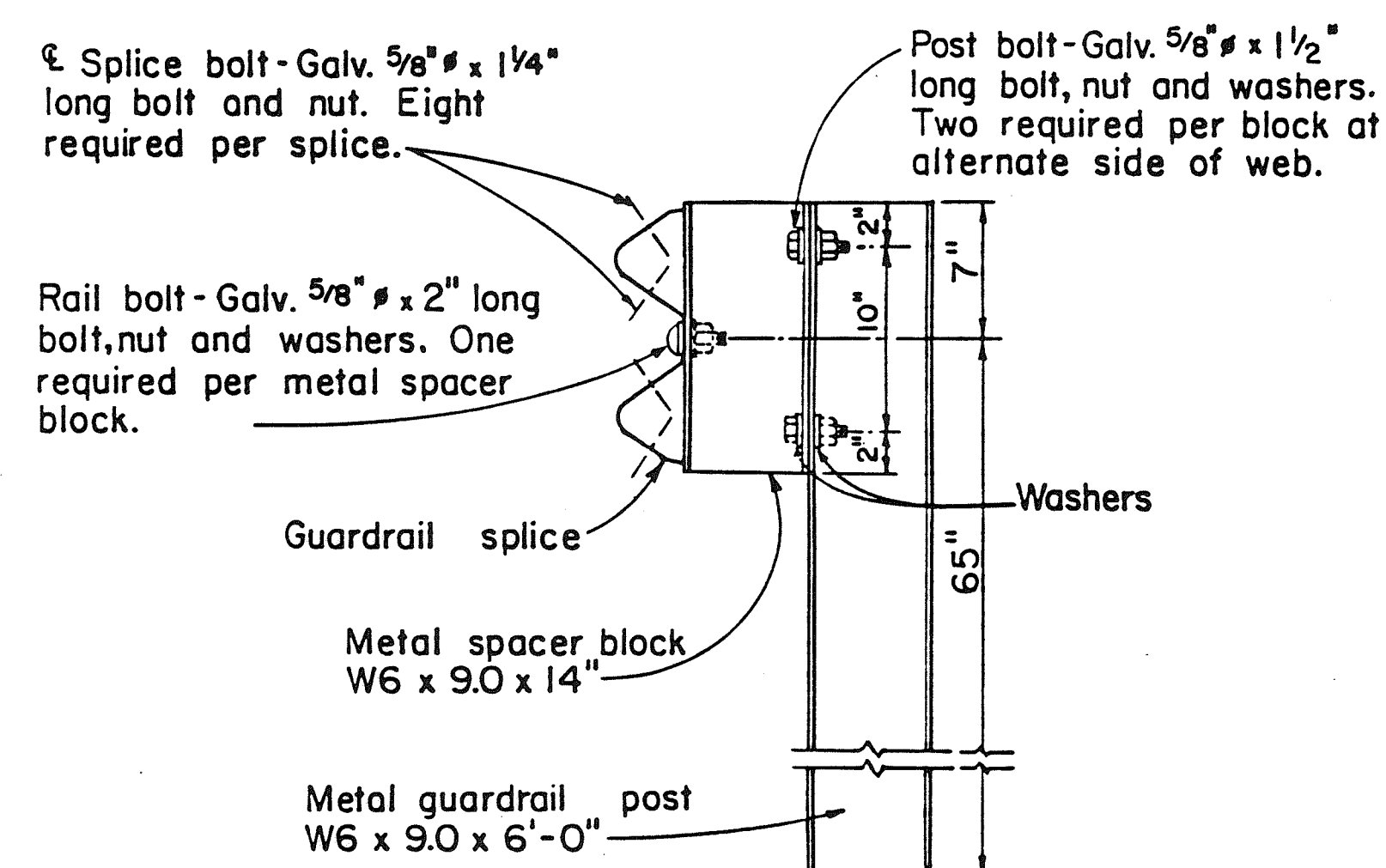
FED. ROAD DIST. NO.	STATE	PROJ. NO.	FISCAL YEAR	SHEET NO.	TOTAL SHEETS
HAWAII	HAW.			32	53

GENERAL NOTES

- Both of the alternate type posts may be used on any one project however, only one type of post shall be used in any single run of guardrail.
- All hardware, posts and blocks shall be galvanized. No punching, drilling or cutting will be permitted after galvanizing.
- Connection details for bent plate post and block shall be similar to the details shown for structural shape post, and block.
- Where conditions require, special post lengths in increments of 6 inches may be specified.
- For details of rail elements, bolts and nuts, see Standard Plan TE-51.
- All fasteners, posts, blocks and rail elements shall conform to the latest edition and amendments of "A Guide to Standardized Highway Barrier Rail Hardware", a report prepared and approved by the AASHTO-AGC-ARTBA Joint Cooperative Committee.



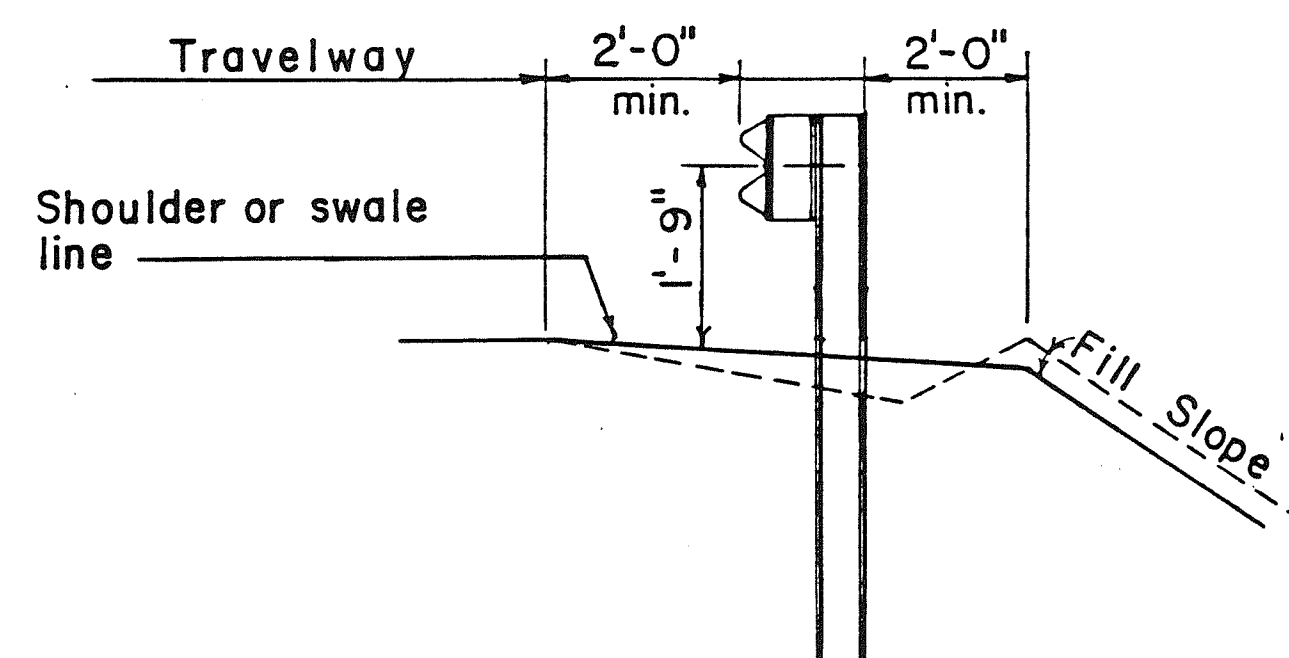
PLAN



ELEVATION

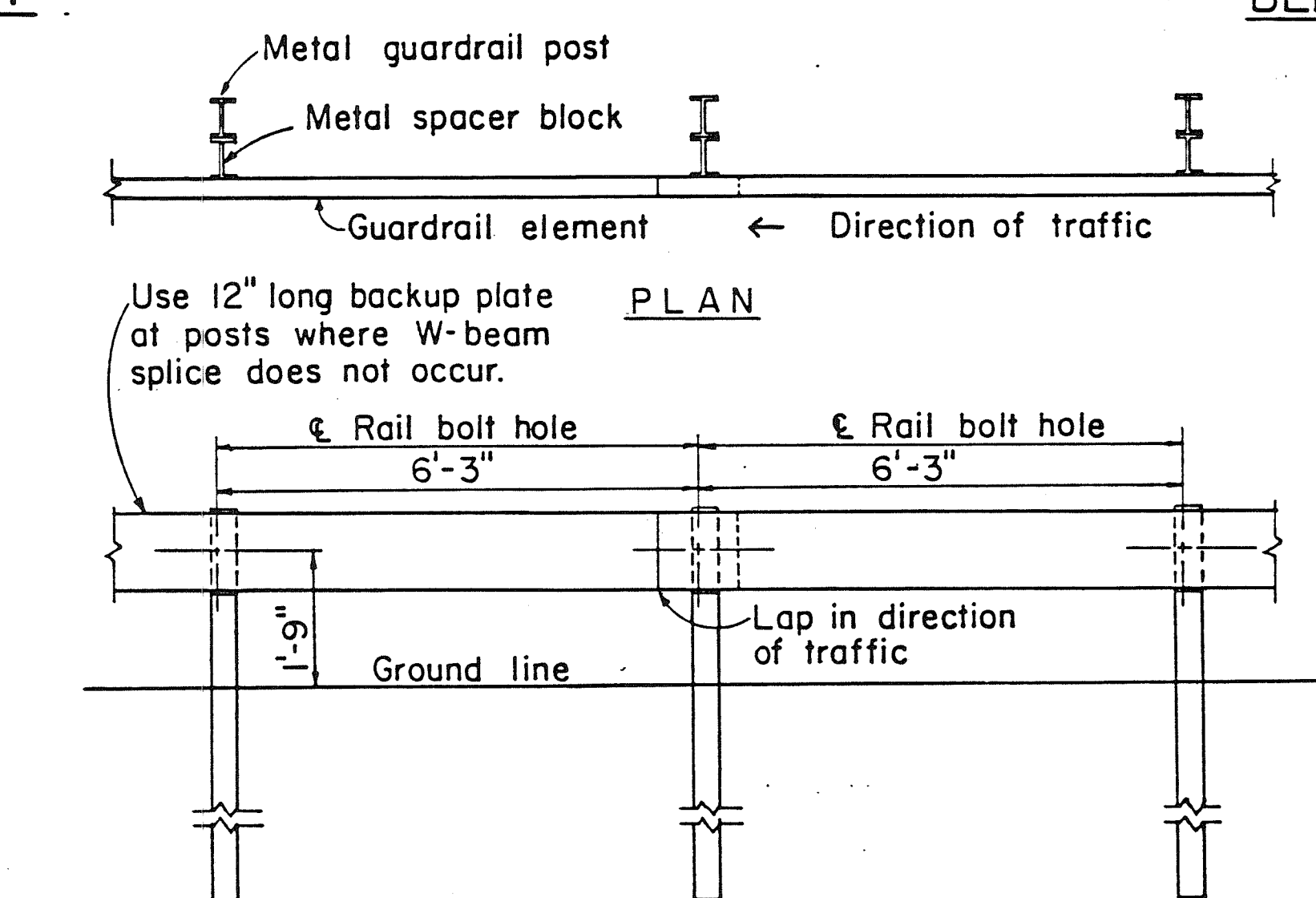
SINGLE METAL GUARDRAIL ON METAL POST WITH METAL SPACER BLOCK

SCALE: 1 1/2" = 1'-0"



TYPICAL METAL GUARDRAIL DETAIL

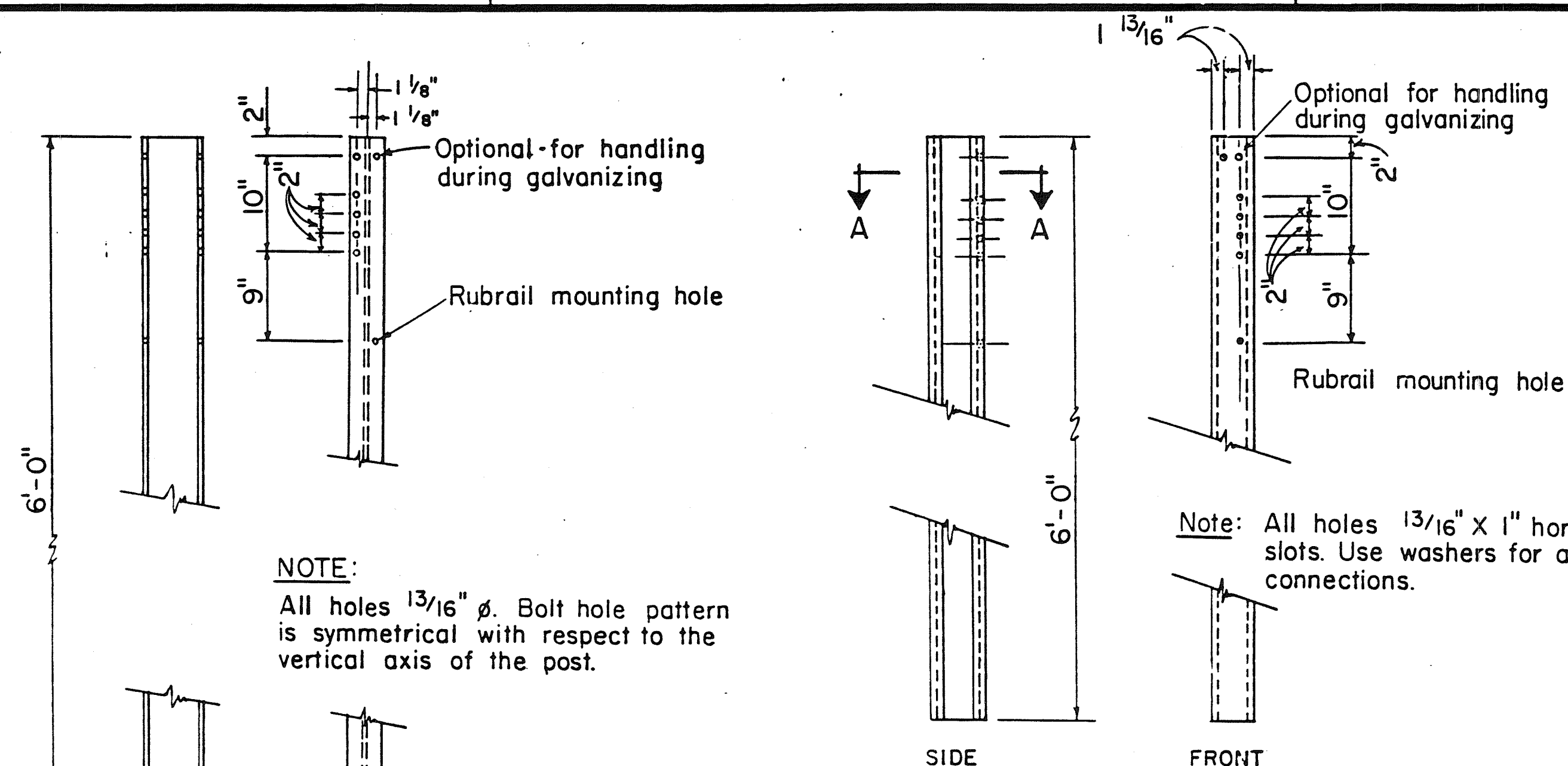
SCALE: 1/2" = 1'-0"



ELEVATION

METAL GUARDRAIL ON METAL POST WITH METAL SPACER BLOCK

SCALE: 1/2" = 1'-0"



NOTE:

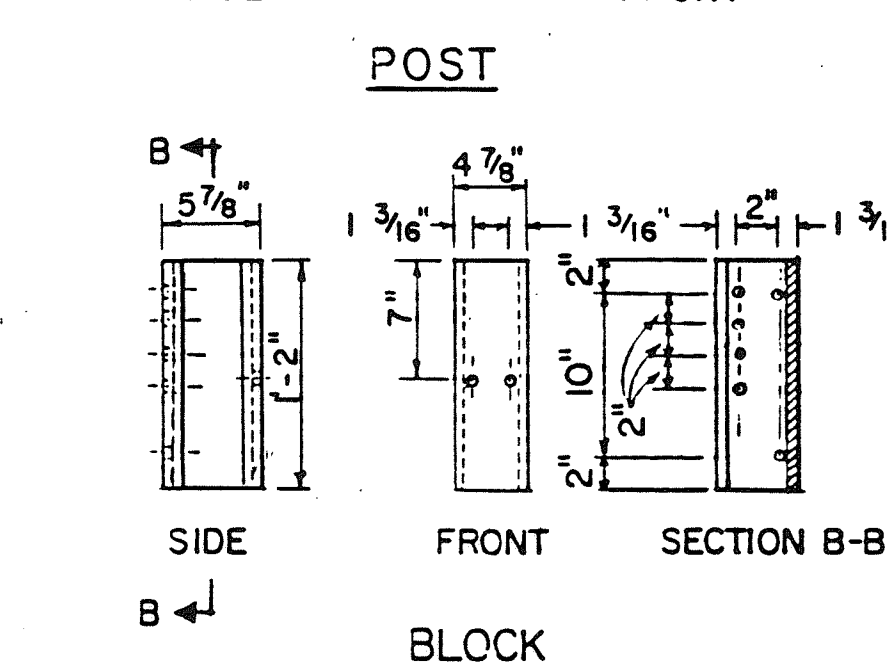
All holes 1 3/16" ϕ . Bolt hole pattern is symmetrical with respect to the vertical axis of the post.

POST

BLOCK

STRUCTURAL SHAPE POST AND BLOCK

SCALE: 1" = 1'-0"

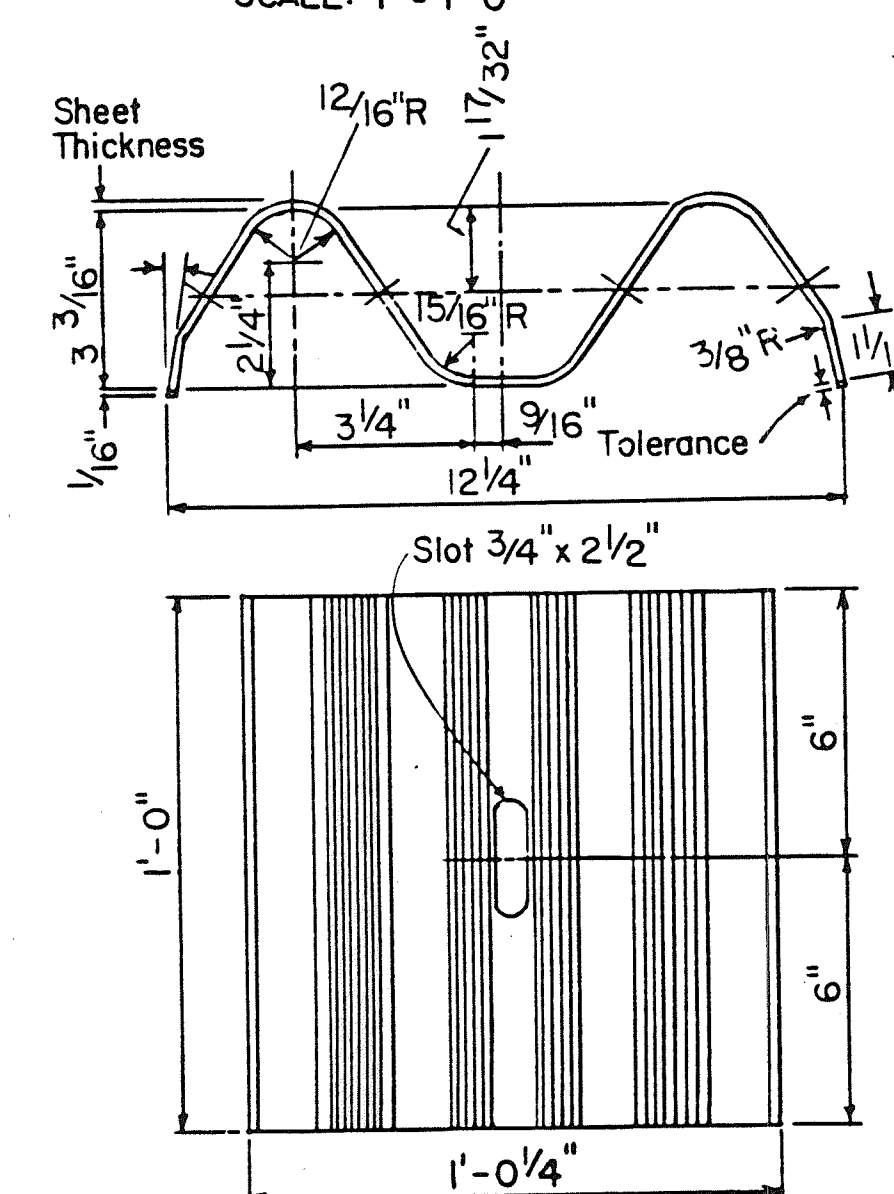


POST

BLOCK

BENT PLATE POST AND BLOCK

SCALE: 1" = 1'-0"



BACK-UP-PLATE

N.T.S.

THIS WORK WAS PREPARED BY ME OR UNDER MY SUPERVISION

Royce S. Fukunaga

ROYCE S. FUKUNAGA
REGISTERED PROFESSIONAL ENGINEER
No. 2107-C
HAWAII, U.S.A.

STATE OF HAWAII
DEPARTMENT OF TRANSPORTATION
HIGHWAYS DIVISION

GUARDRAIL DETAILS

MAUNA KEA OBSERVATORY ACCESS ROAD
PHASE III-B

PROJECT NO. _____

Scale: As Shown

SHEET NO. 1 OF 1 SHEETS