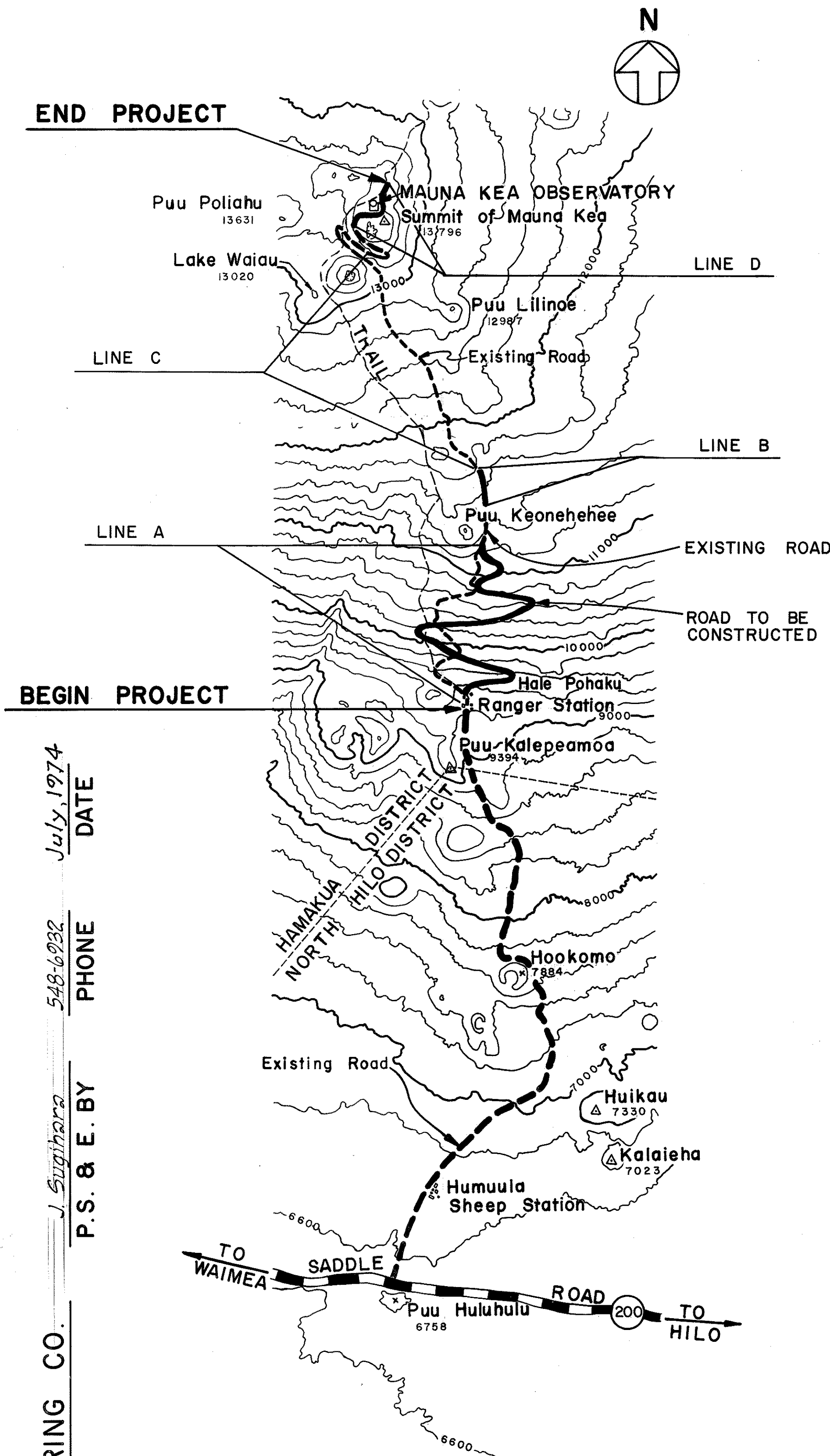
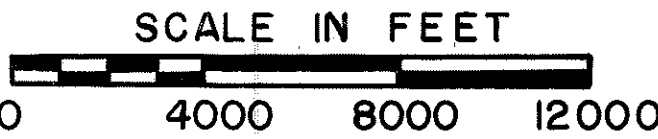


STATE	PROJ. NO.	FISCAL YEAR	SHEET NO.	TOTAL SHEETS
HAW.	BMD 66-343 PHASE I	FY 74-75	1	41



GENERAL CONSTRUCTION SITE PLAN



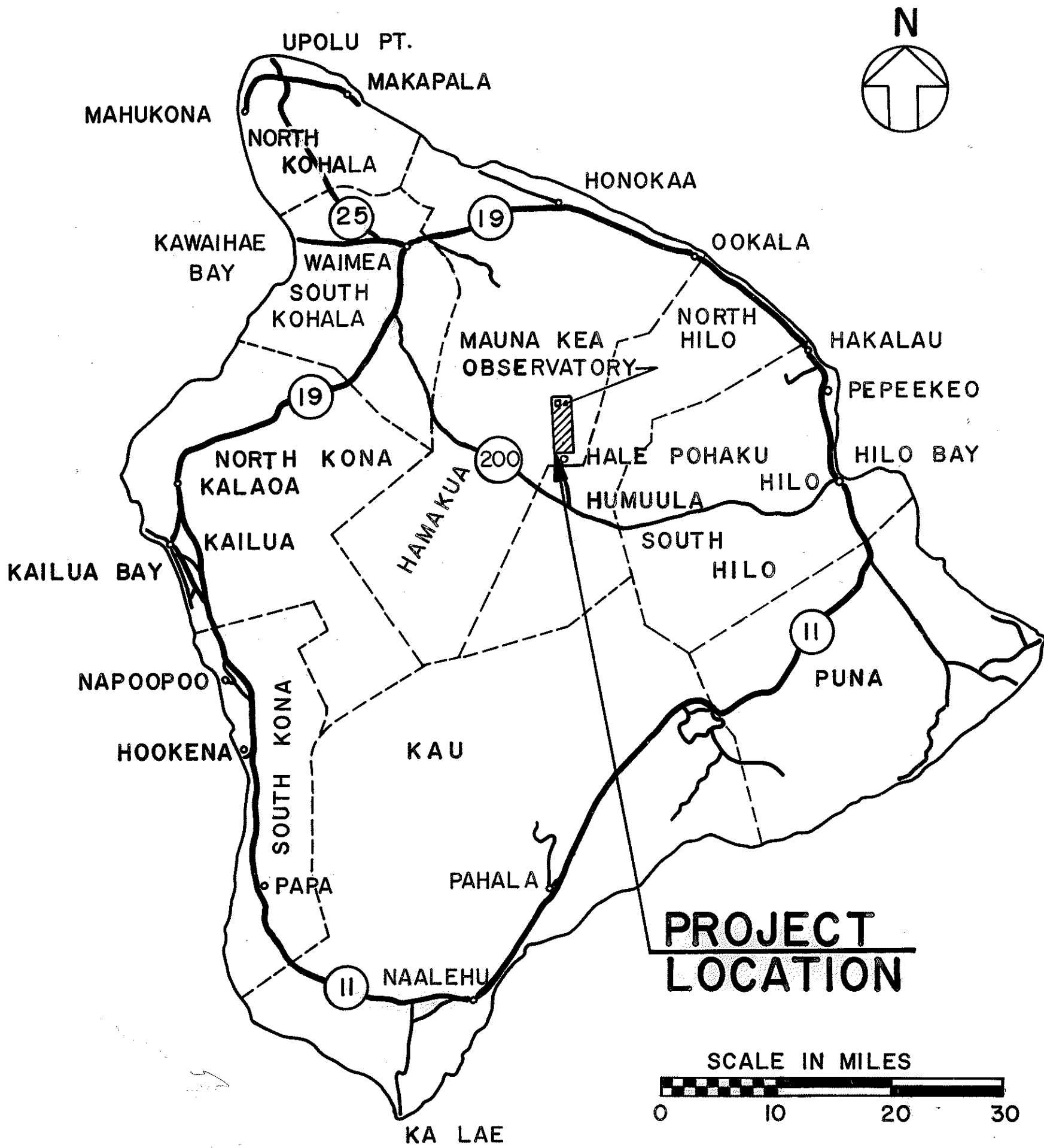
LENGTH OF PROJECT = 6.5 MILES
(TOTAL OF LINES A, B, C, D)

STATE OF HAWAII
DEPARTMENT OF TRANSPORTATION
HIGHWAYS DIVISION
"AS BUILT"
PLANS FOR CONSTRUCTION OF
MAUNA KEA OBSERVATORY
ACCESS ROAD
HALE POHAKU TO SUMMIT OF MAUNA KEA
PROJECT NO. BMD 66 - 343
PHASE I
DISTRICT OF HAMAKUA
ISLAND OF HAWAII

INDEX TO DRAWINGS		
SHEET NO.	DRAWING NO.	DESCRIPTION
1	G1	TITLE SHEET
2	G2	GENERAL NOTES, ABBREVIATIONS, SYMBOLS & SHEET LAYOUT INDEX
3 - 6	G3 - G6	PROJECT AREA MAP
7	C1	TYPICAL ROADWAY SECTIONS & DETAILS
8 - 17	C101 - C110	PLAN & PROFILE
18	C201	SITE PLAN, HALE POHAKU AREA
19	C202	SITE PLAN, MAUNA KEA SUMMIT AREA
20	C301	SIGN & GATE DETAILS
21 - 28	C401 - C408	DRAINAGE STRUCTURE DETAILS
29	C501	MASS DIAGRAM
30	C801	QUARRY LOCATION AND GRADING PLAN
31 - 41	—	STANDARD DETAILS

DESIGN CLASSIFICATION

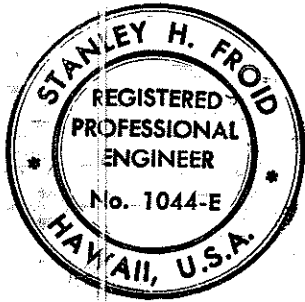
DESIGN ADT (1975)	125
DHV	20
D	50
T	14 %
V (DESIGN SPEED)	NOT APPLICABLE



ISLAND OF HAWAII
GENERAL PLAN

NOTE:
ALL CHANGES MADE DURING CONSTRUCTION
HAVE BEEN INCORPORATED ON THESE PLANS
EXCEPT CHANGES IN THE ORIGINAL THEORETI-
CAL QUANTITIES.

Ernest G. Shawa 4/12/77
PROJECT ENGINEER DATE



THIS WORK WAS PREPARED BY
ME OR UNDER MY SUPERVISION.
Stanley H. Frodo
Signature

STATE OF HAWAII
UNIVERSITY OF HAWAII

APPROVED:

Keith A. Snyder 10/2/74
CHANCELLOR DATE
UNIVERSITY OF HAWAII AT MANOA

STATE OF HAWAII
DEPARTMENT OF TRANSPORTATION
HIGHWAYS DIVISION

APPROVED:

Manning Lee 11/11/74
DIRECTOR OF TRANSPORTATION DATE