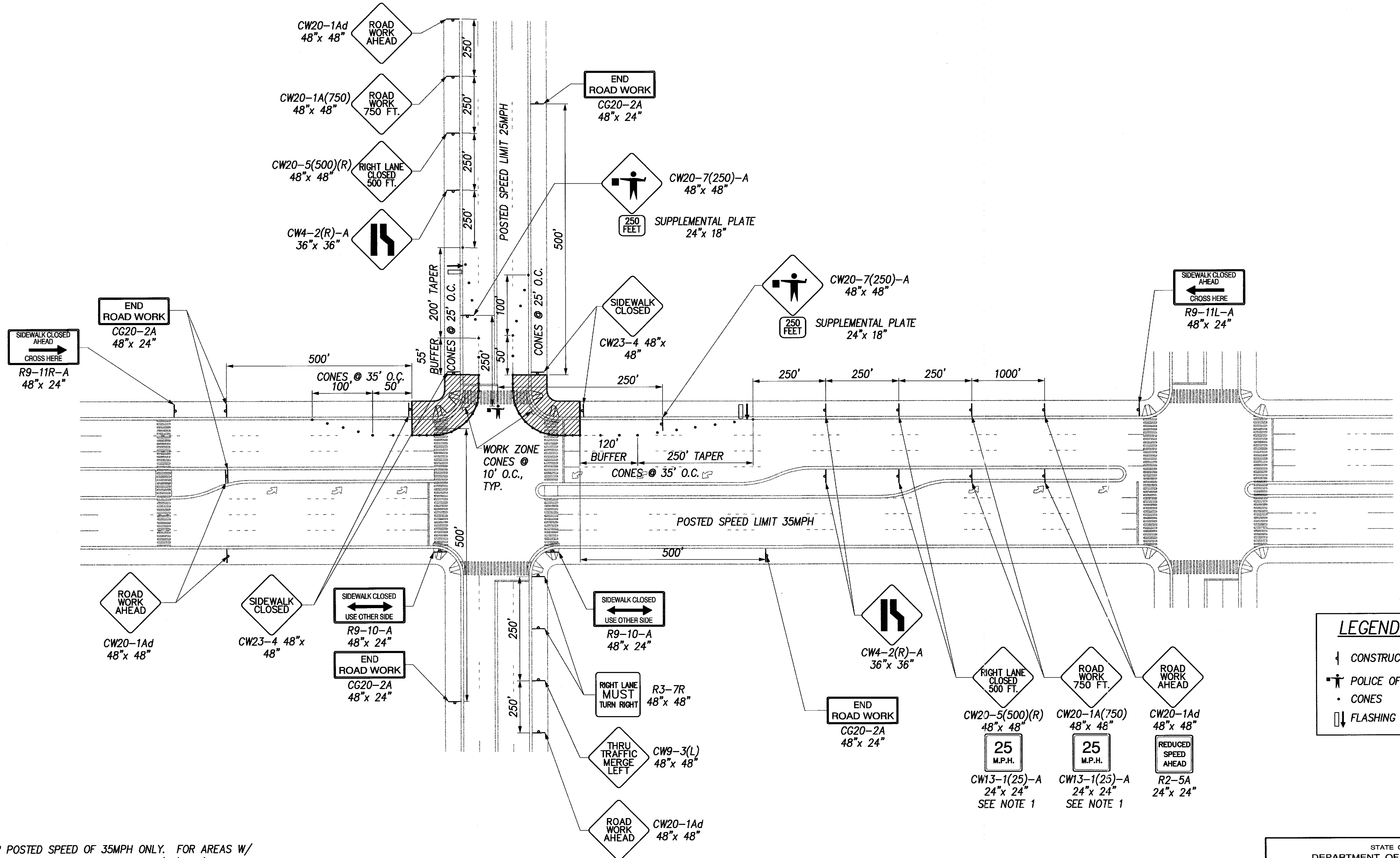


FED. ROAD DIST. NO.	STATE	PROJ. NO.	FISCAL YEAR	SHEET NO.	TOTAL SHEETS
HAWAII	HAW.	CMAQ-0100(66)	2004	100	105



NOTES:

1. FOR POSTED SPEED OF 35MPH ONLY. FOR AREAS W/ POSTED SPEED OF 45MPH, USE CW13-1(35)-A (35MPH CONSTRUCTION ZONE SPEED LIMIT)

2. SIGN SPACING, TAPER AND BUFFER LENGTHS SHALL BE IN ACCORDANCE TO EITHER THE STD. SPEC. SECTION 645, STATE OF HAWAII DEPT. OF TRANSPORTATION, HIGHWAYS DIVISION OR THE MANUAL ON UNIFORM TRAFFIC CONTROL DEVICES (MUTCD), 2000 ED. THE CONTRACTOR SHALL APPLY THE STRICTER OF THE TWO.

TRAFFIC CONTROL PLAN – CROSS INTERSECTION, DIVIDED HWY. – PHASE 1  
SCALE: NTS

**LEGEND**

- CONSTRUCTION SIGN
- POLICE OFFICER
- CONES
- FLASHING ARROW SIGN

DEXTER S. ELLIOTT  
LICENSED PROFESSIONAL ENGINEER  
No. 4739-C  
HAWAII, U.S.A.

THIS WORK WAS PREPARED BY ME OR UNDER MY SUPERVISION.

*[Signature]*

STATE OF HAWAII  
DEPARTMENT OF TRANSPORTATION  
HIGHWAYS DIVISION

**TYPICAL TRAFFIC CONTROL PLAN**

*Pedestrian Facilities & ADA Compliance at Various Locations on Hawaii*  
Federal Aid Project No. CMAQ-0100 (66)  
Scale: As Shown Date: August 2004  
SHEET No. TC-1 OF 6 SHEETS

SURVEY PLOTTED BY	DATE
DESIGNED BY	
TRACED BY	
QUANTITIES BY	
CHECKED BY	

ORIGINAL PLAN

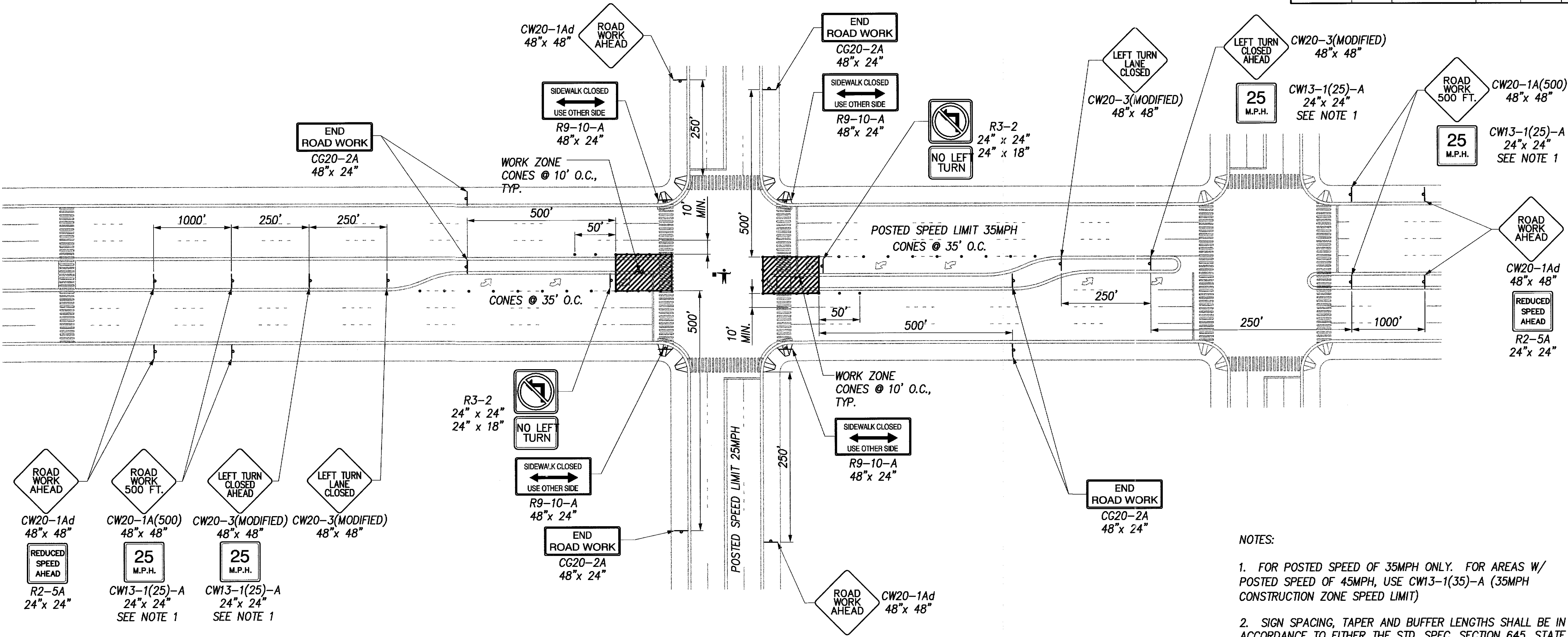
NOTE BOOK

No.

CAD by B. Mendoza 5/5-52



FED. ROAD DIST. NO.	STATE	PROJ. NO.	FISCAL YEAR	SHEET NO.	TOTAL SHEETS
HAWAII	HAW.	CMAQ-0100(66)	2004	102	105



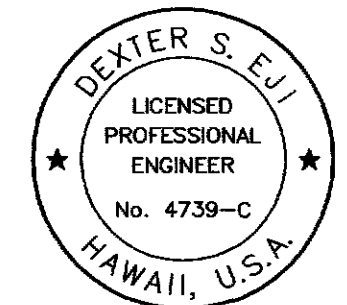
- NOTES:
- FOR POSTED SPEED OF 35MPH ONLY. FOR AREAS W/ POSTED SPEED OF 45MPH, USE CW13-1(35)-A (35MPH CONSTRUCTION ZONE SPEED LIMIT)
  - SIGN SPACING, TAPER AND BUFFER LENGTHS SHALL BE IN ACCORDANCE TO EITHER THE STD. SPEC. SECTION 645, STATE OF HAWAII DEPT. OF TRANSPORTATION, HIGHWAYS DIVISION OR THE MANUAL ON UNIFORM TRAFFIC CONTROL DEVICES (MUTCD), 2000 ED. THE CONTRACTOR SHALL APPLY THE STRICTER OF THE TWO.

TRAFFIC CONTROL PLAN - CROSS INTERSECTION, DIVIDED HWY. - PHASE 3  
SCALE: NTS

LEGEND	
+	CONSTRUCTION SIGN
•	POLICE OFFICER
•	CONES
⇅	FLASHING ARROW SIGN

ORIGINAL PLAN	SURVEY PLOTTED BY	DATE
NOTE BOOK	DRAWN BY	
	TRACED BY	
	CHECKED BY	
	QUANTITIES BY	

QAD by R. Mendoza 55-52



THIS WORK WAS PREPARED BY ME OR UNDER MY SUPERVISION.

*[Signature]*

STATE OF HAWAII  
DEPARTMENT OF TRANSPORTATION  
HIGHWAYS DIVISION

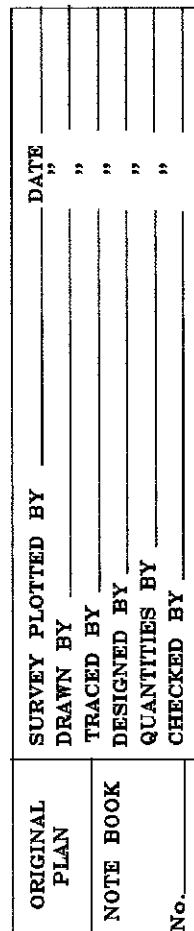
**TYPICAL TRAFFIC CONTROL PLAN**

*Pedestrian Facilities & ADA Compliance at Various Locations on Hawaii*  
Federal Aid Project No. CMAQ-0100 (66)  
Scale: As Shown Date: August 2004


SHEET No. TC-3 OF 6 SHEETS





Last Saved: J:\COE-Curb Ramps\Big Island\Traffic Control\TCP-4.dwg 07/28/04 at 13:53





### LEGEND

 CONSTRUCTION SIGN

 POLICE OFFICER

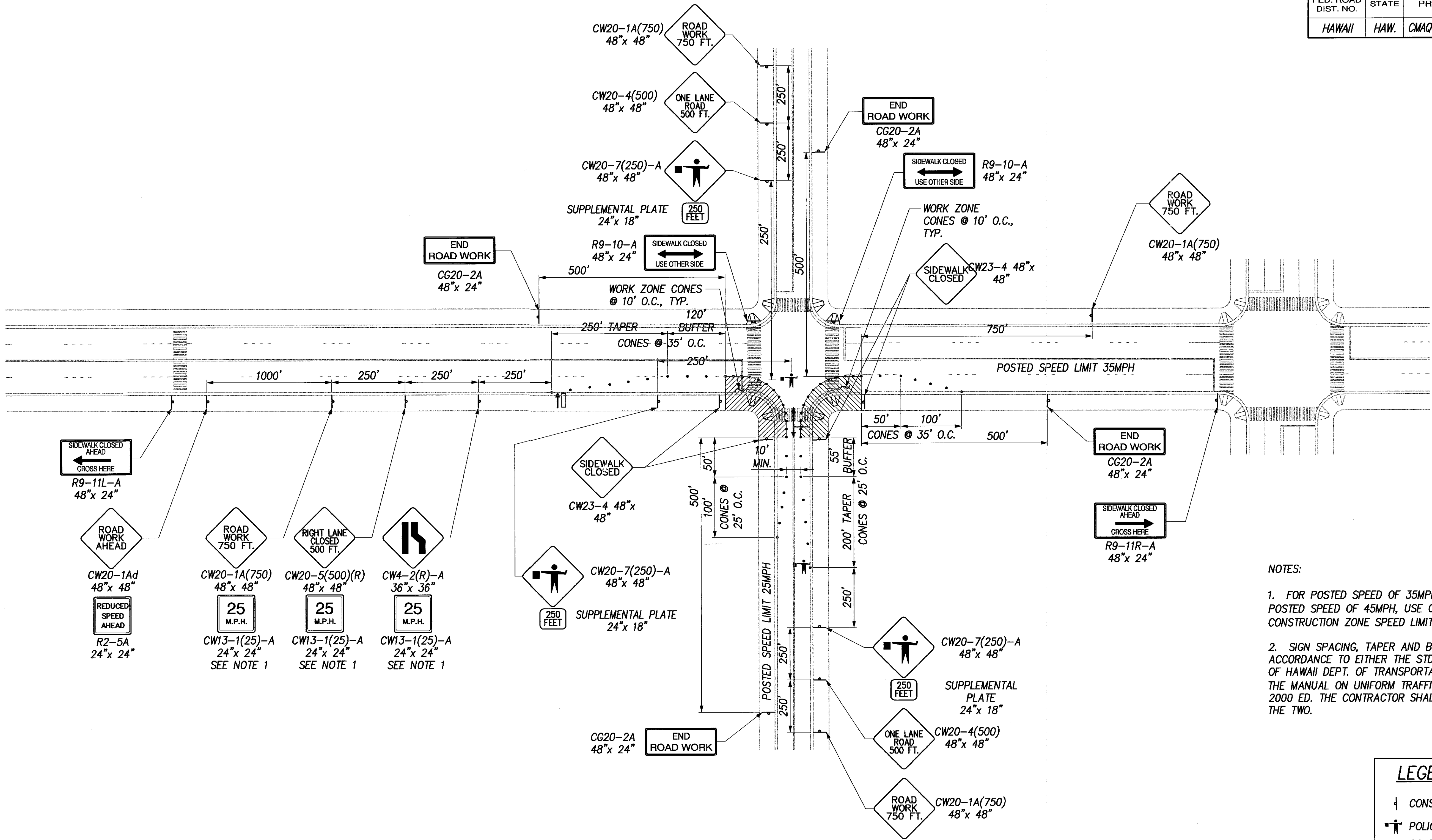
 CONES

 FLASHING ARROW SIGN

- 
- DEXTER S. EJI  
 LICENSED  
 PROFESSIONAL  
 ENGINEER  
 No. 4739-C  
 HAWAII, U.S.A.
- THIS WORK WAS PREPARED BY ME  
 OR UNDER MY SUPERVISION.
- Dexter S. Eji*

SHEET No. TC-4 OF 6 SHEETS

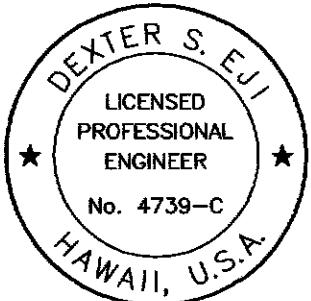
FED. ROAD DIST. NO.	STATE	PROJ. NO.	FISCAL YEAR	SHEET NO.	TOTAL SHEETS
HAWAII	HAW.	CMAQ-0100(66)	2004	104	105



SURVEY PLOTTED BY	DATE
DRAWN BY	
TRACED BY	
CHECKED BY	
ORIGINAL PLAN	
NOTE BOOK	
No.	

CAD by R. Mendoza 55-52

Last Saved: J:\COE-Curb Ramps\Big Island\Traffic Control\TCP-5.dwg 07/25/04 at 14:07



THIS WORK WAS PREPARED BY ME  
OR UNDER MY SUPERVISION.

*[Signature]*

STATE OF HAWAII  
DEPARTMENT OF TRANSPORTATION  
HIGHWAYS DIVISION

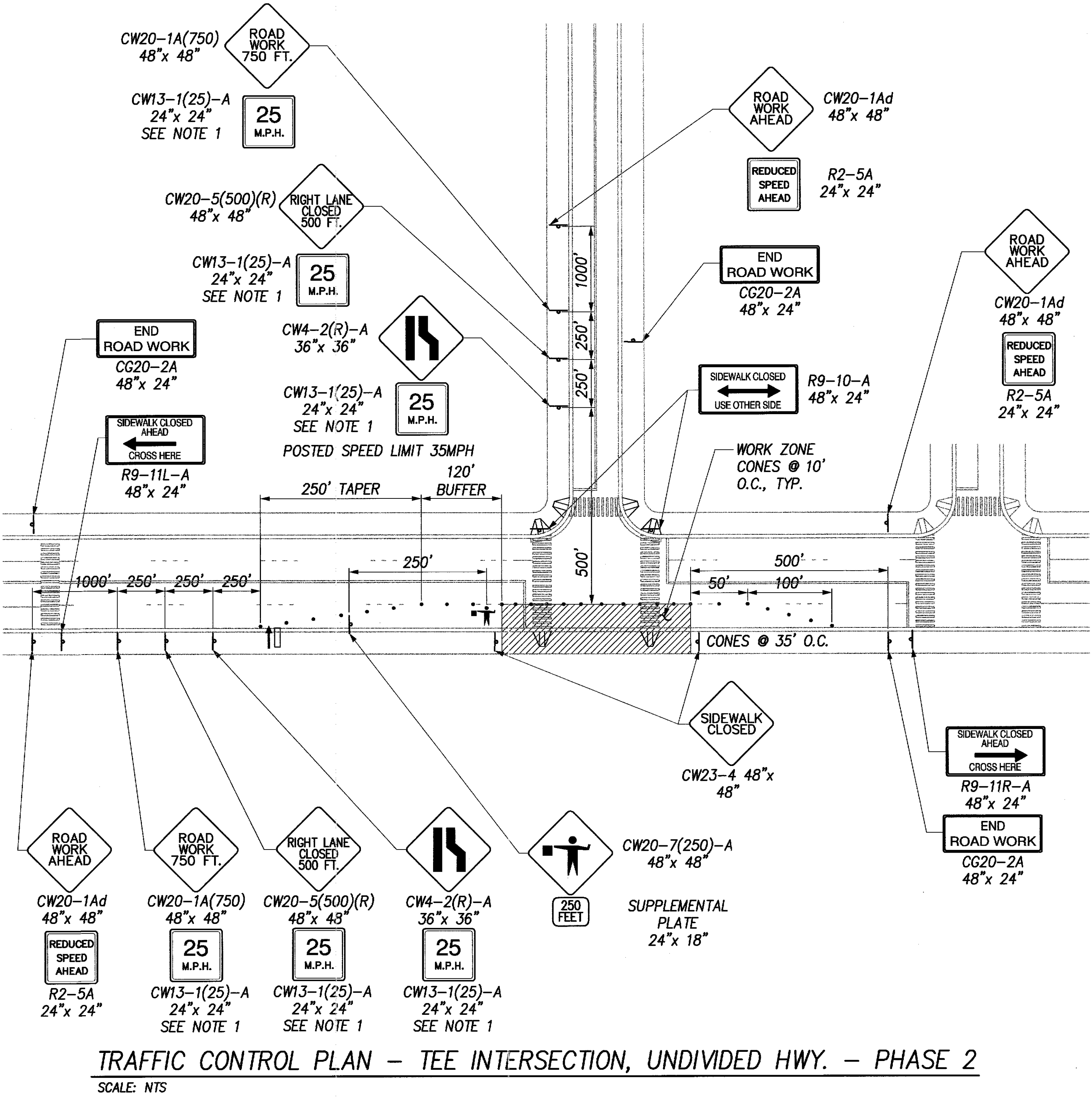
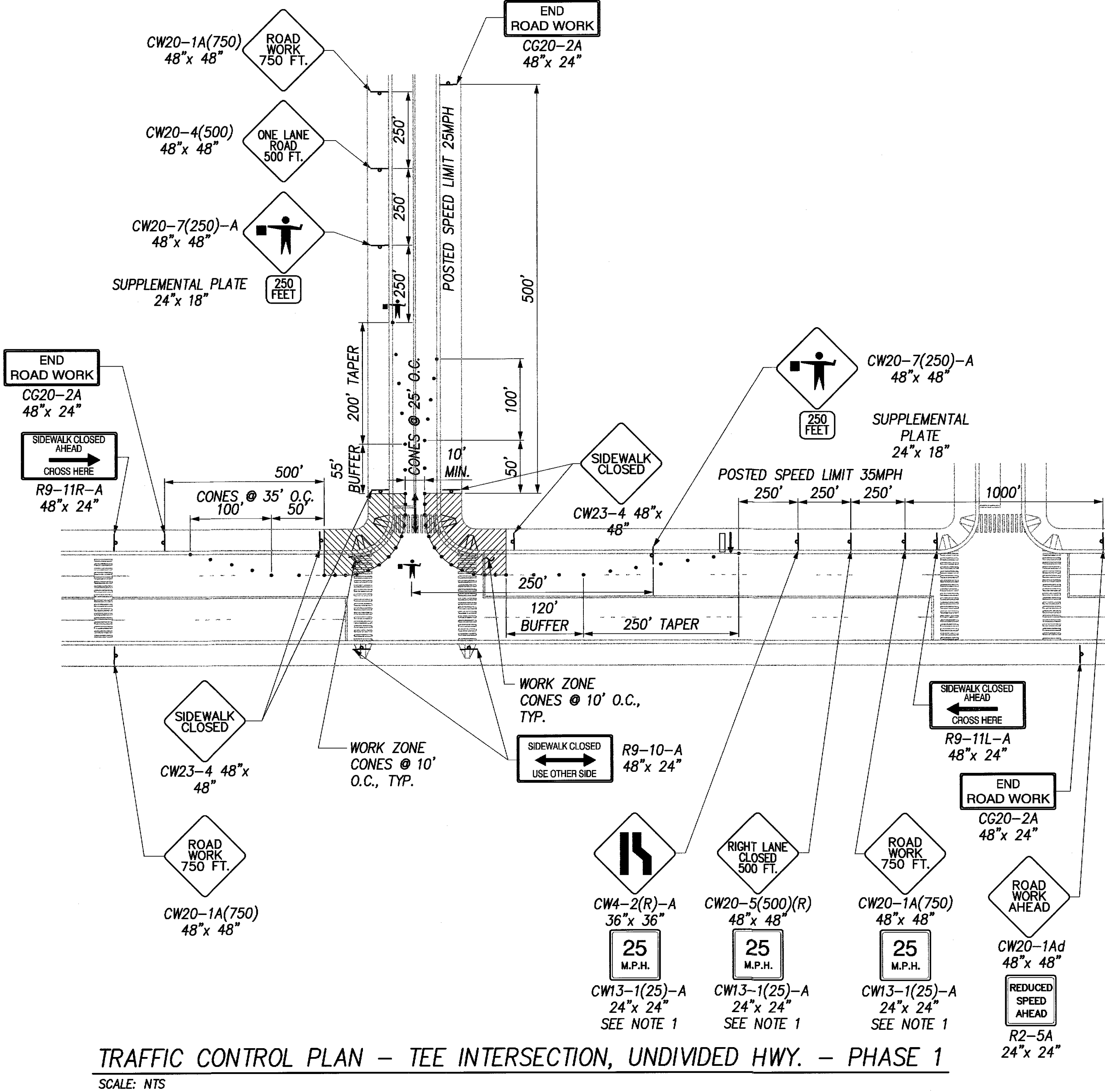
### TYPICAL TRAFFIC CONTROL PLAN

*Pedestrian Facilities & ADA Compliance at  
Various Locations on Hawaii  
Federal Aid Project No. CMAQ-0100 (66)*

Scale: As Shown Date: August 2004

SHEET No. TC-5 OF 6 SHEETS

FED. ROAD DIST. NO.	STATE	PROJ. NO.	FISCAL YEAR	SHEET NO.	TOTAL SHEETS
HAWAII	HAW.	CMAQ-0100(66)	2004	105	105



SURVEY PLOTTED BY	DATE
DRAWN BY	
TRACED BY	
CHECKED BY	
ORIGINAL PLAN	
NOTE BOOK	
No.	

CAD by R. Mendoza 55-52

Last Saved: J:\COE-Curb Ramps\Big Island\Traffic Control\TGP-6.dwg 07/25/04 at 14:31

**LEGEND**

- CONSTRUCTION SIGN
- POLICE OFFICER
- CONES
- FLASHING ARROW SIGN

- NOTES:
- FOR POSTED SPEED OF 35MPH ONLY. FOR AREAS W/ POSTED SPEED OF 45MPH, USE CW13-1(35)-A (35MPH CONSTRUCTION ZONE SPEED LIMIT)
  - SIGN SPACING, TAPER AND BUFFER LENGTHS SHALL BE IN ACCORDANCE TO EITHER THE STD. SPEC. SECTION 645, STATE OF HAWAII DEPT. OF TRANSPORTATION, HIGHWAYS DIVISION OR THE MANUAL ON UNIFORM TRAFFIC CONTROL DEVICES (MUTCD), 2000 ED. THE CONTRACTOR SHALL APPLY THE STRICTER OF THE TWO.

DEXTER S. ELLI  
LICENSED PROFESSIONAL ENGINEER  
No. 4739-C  
HAWAII, U.S.A.

THIS WORK WAS PREPARED BY ME OR UNDER MY SUPERVISION.

*[Signature]*

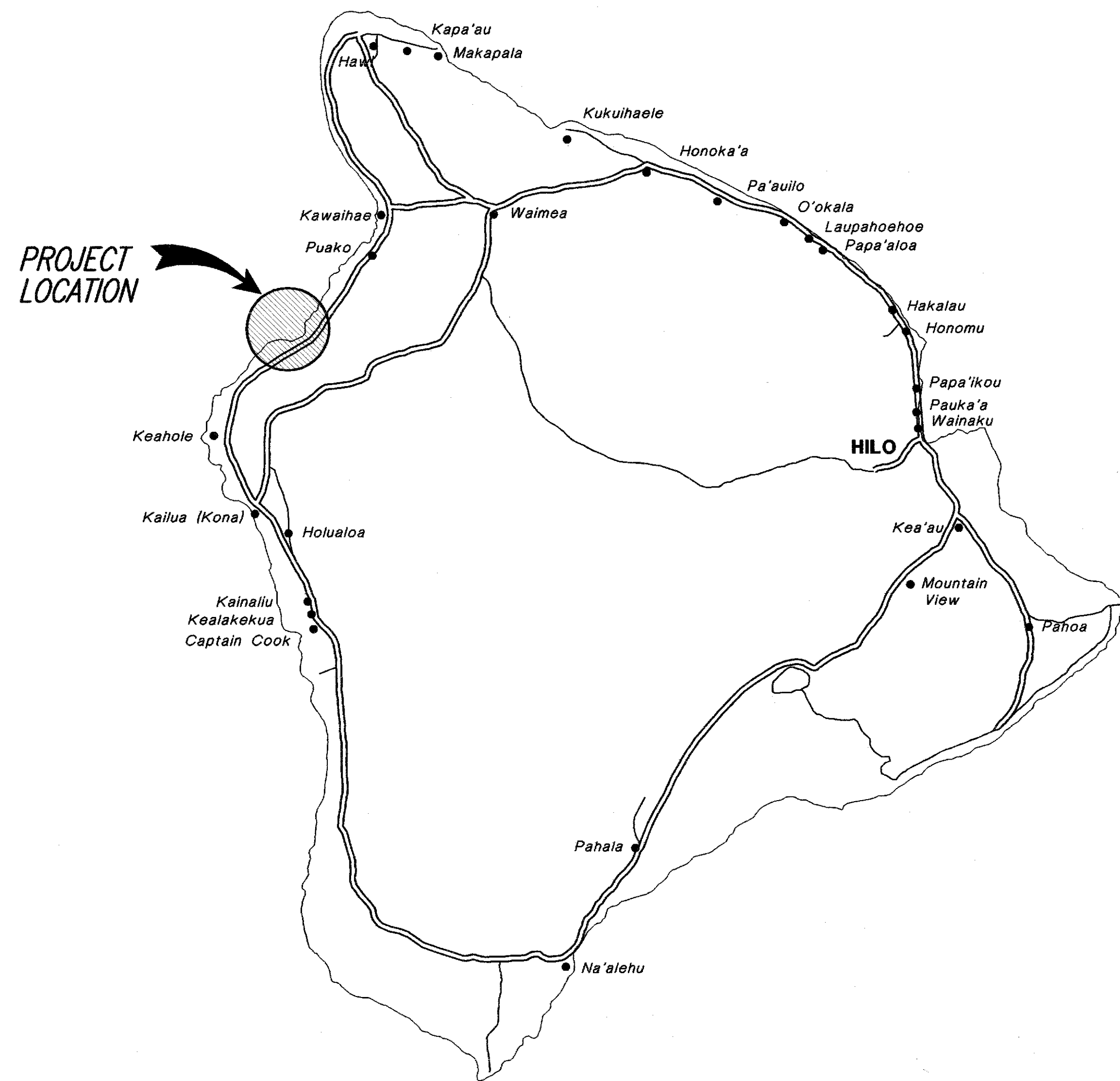
STATE OF HAWAII  
DEPARTMENT OF TRANSPORTATION  
HIGHWAYS DIVISION

**TYPICAL TRAFFIC CONTROL PLAN**

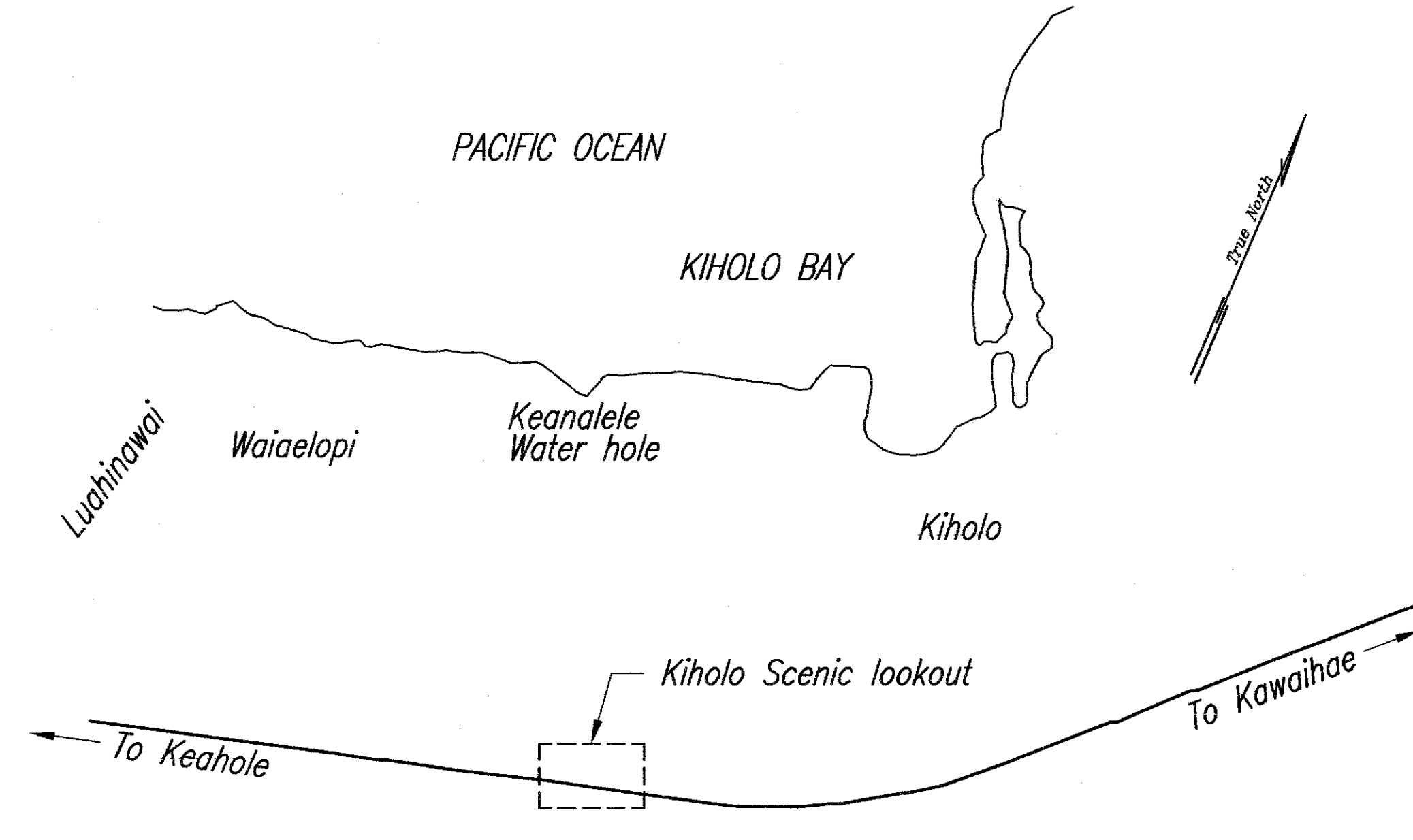
*Pedestrian Facilities & ADA Compliance at Various Locations on Hawaii*  
Federal Aid Project No. CMAQ-0100 (66)  
Scale: As Shown Date: August 2004  
SHEET No. TC-6 OF 6 SHEETS



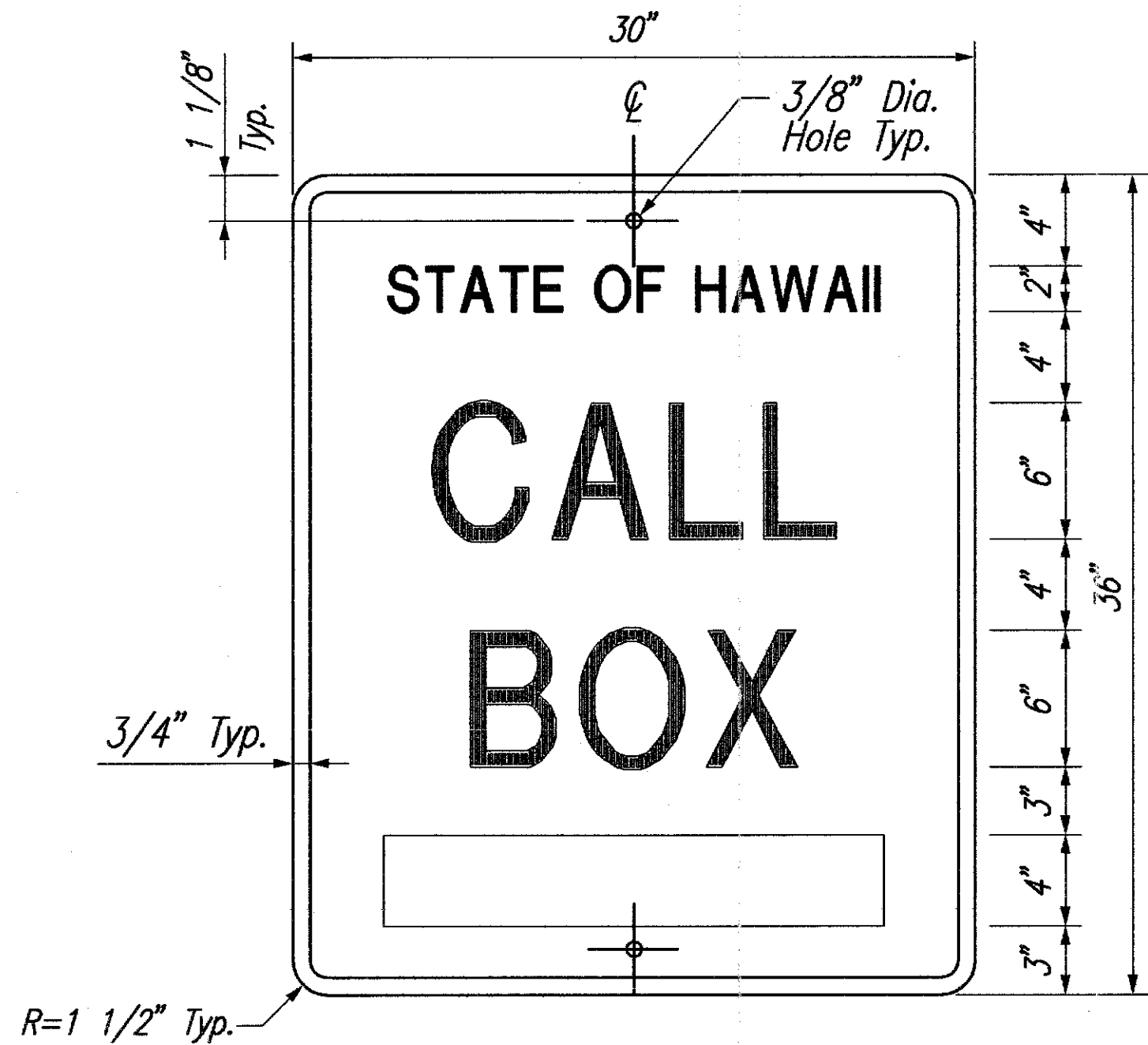
FED. ROAD DIST. NO.	STATE	FED. AID PROJ. NO.	FISCAL YEAR	SHEET NO.	TOTAL SHEETS
HAWAII	HAW.	CMAQ-0100(66)	2004	C.O.105 S-1	105



LOCATION MAP  
NOT TO SCALE



VICINITY MAP  
NOT TO SCALE

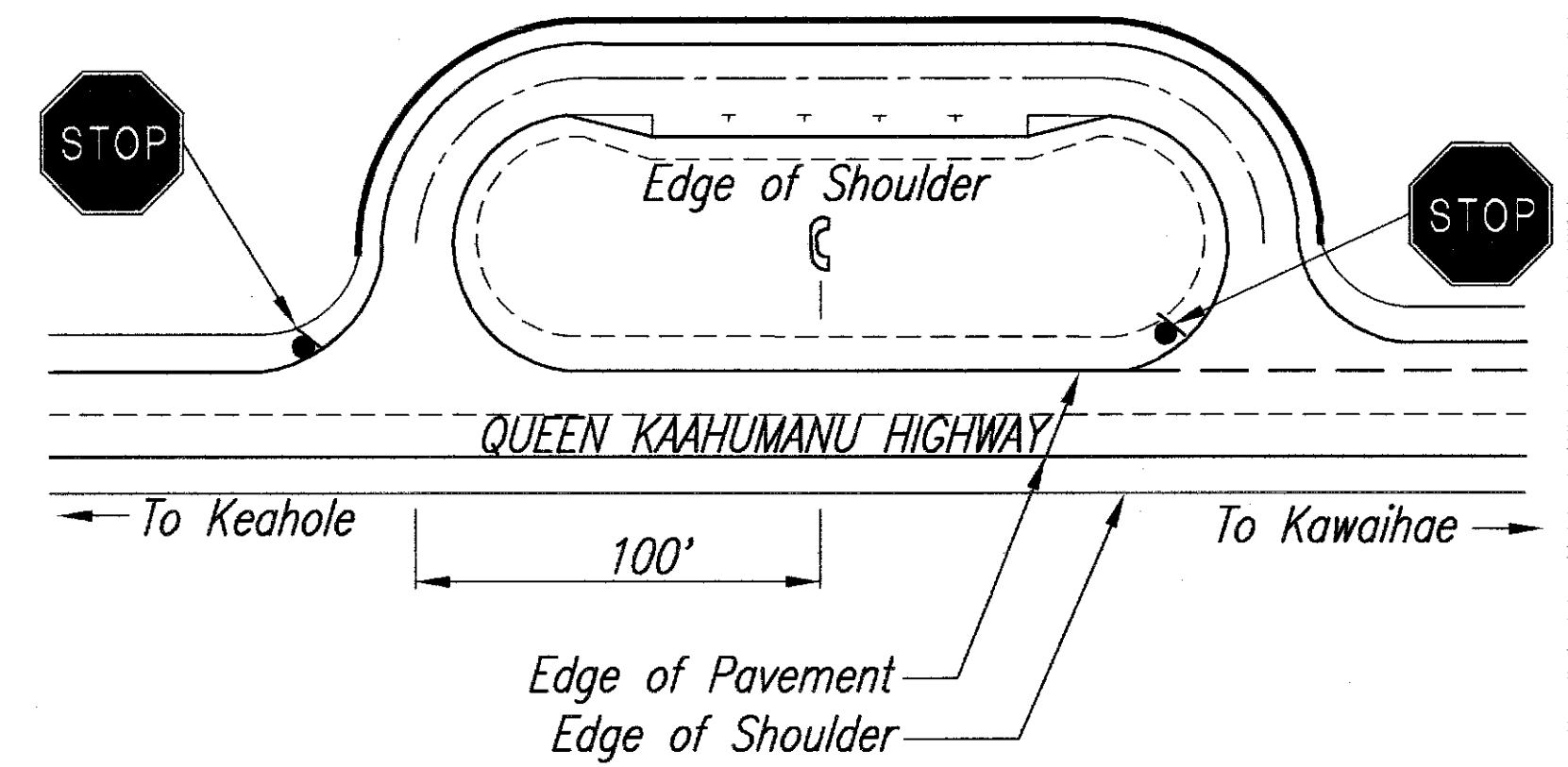


CALL BOX IDENTIFICATION SIGN

NOT TO SCALE

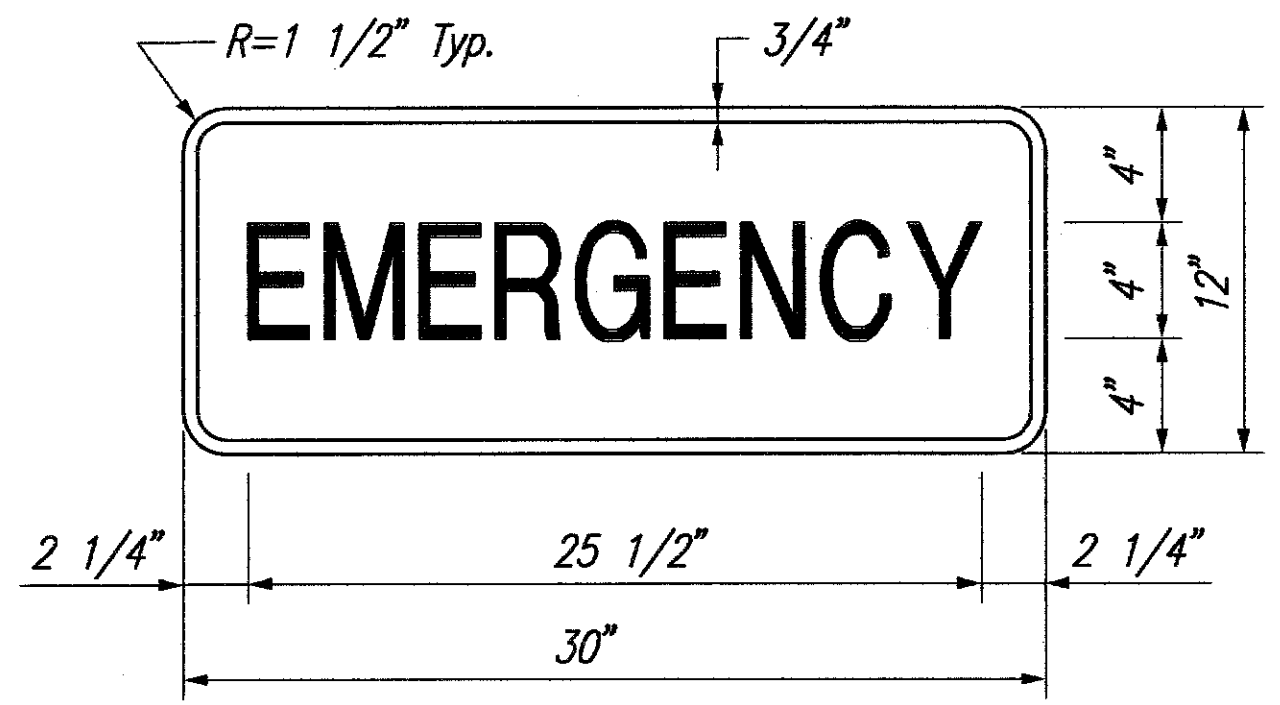
NOTES:

1. All lines of lettering shall be centered and shall be the following lettering size and series:  
Line No. 1 - 2" SERIES C  
Line No. 2 - 6" SERIES E  
Line No. 3 - 6" SERIES E
2. Call Box Identification Numbers shall be 4" SERIES D letters centered in the bottom position of the sign.
3. All signs shall have white reflectorized border and legend on a blue reflectorized background.
4. Modify hole locations to accommodate the 2' offset from edge of shoulder.



KIHOLE SCENIC LOOKOUT - EXISTING CONDITION

NOT TO SCALE



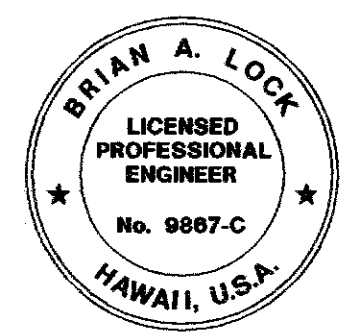
NOTES:

1. Lettering shall be centered and shall be 4" SERIES C letters.
2. All signs shall have white reflector border and legend on a blue reflectorized background.

EMERGENCY SIGN

NOT TO SCALE

DATE	_____
SURVEY PLOTTED BY	_____
DRAWN BY	_____
DESIGNED BY	_____
CHECKED BY	_____
ORIGINAL PLAN	_____
NOTE BOOK	_____
No.	_____



THIS WORK WAS PREPARED BY ME OR UNDER MY SUPERVISION AND CONSTRUCTION OF THIS PROJECT WILL BE UNDER MY OBSERVATION.  
WILSON OKAMOTO CORP. LIC. EXP. DATE APRIL 30, 2008

STATE OF HAWAII  
DEPARTMENT OF TRANSPORTATION  
HIGHWAYS DIVISION  
**CALL BOX LOCATION MAP &  
SIGN DETAILS**  
Pedestrian Facilities & ADA Compliance  
at Various Locations on Hawaii  
Fed. Aid Proj. No. CMAQ-0100(66)  
Scale: As Shown ET1 Date: January 2005  
SHEET No. 1 OF 3 SHEETS

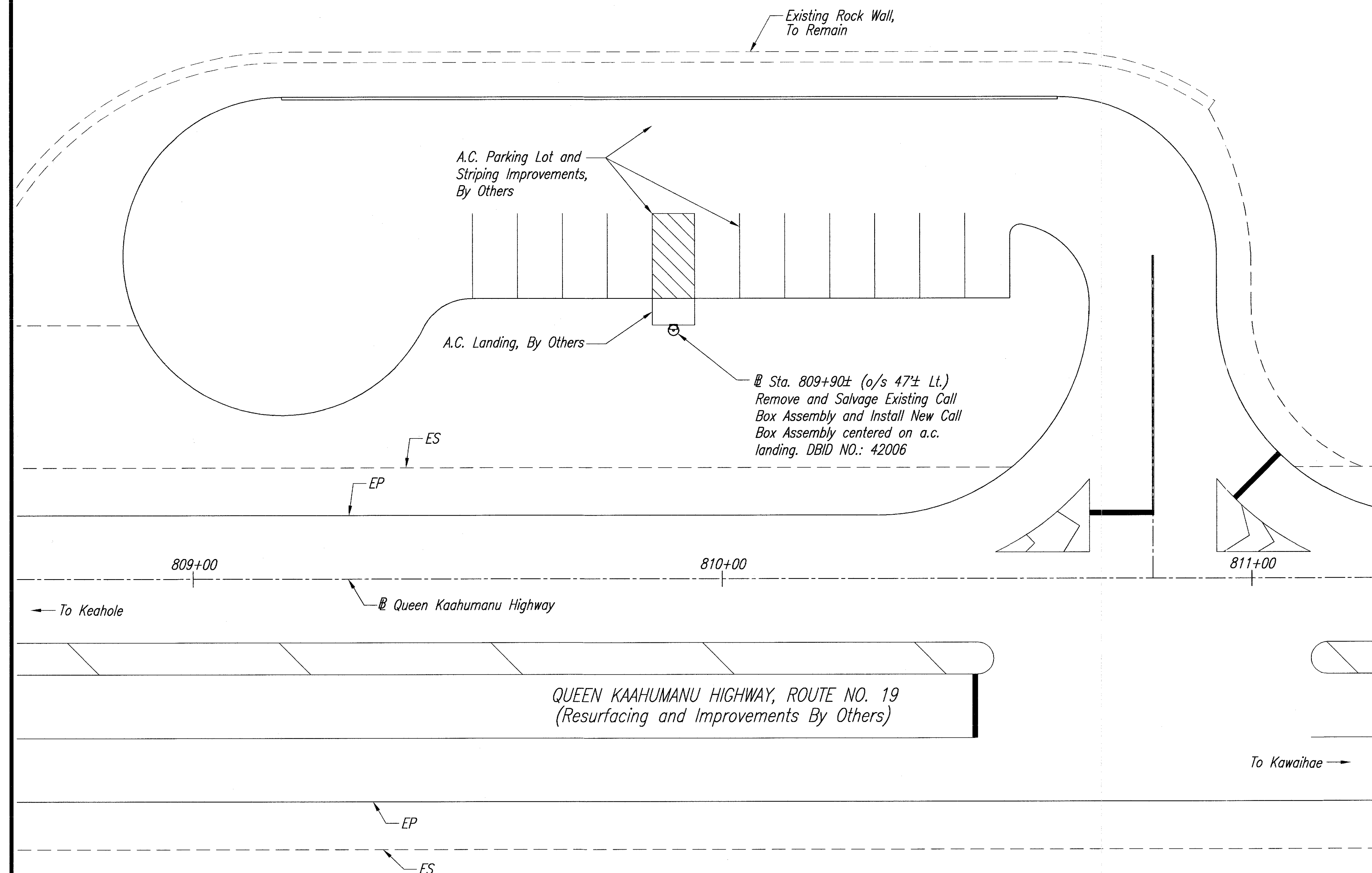
01/26/05 C.O. ADDED THIS SHEET

DATE	REVISION
------	----------



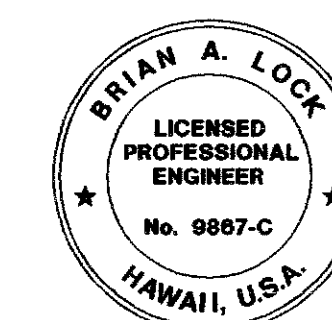


FED. ROAD DIST. NO.	STATE	FED. AID PROJ. NO.	FISCAL YEAR	SHEET NO.	TOTAL SHEETS
HAWAI'I	HAW.	CMAQ-0100(66)	2004	C.O.105 S-3	105



**NOTE:**

1. The Contractor shall coordinate their work with the Contractor for the "Queen Kaahumanu Highway Resurfacing and Intersection Improvements, Federal-Aid Project No. NH-019-1(35)" for the improved condition of Kiholo Scenic Lookout and to minimize construction conflicts.
2. Deliver Salvaged Call Box to the DOT Hilo Baseyard at 50 Makaala Street.



THIS WORK WAS PREPARED BY ME OR UNDER MY SUPERVISION AND CONSTRUCTION OF THIS PROJECT WILL BE UNDER MY OBSERVATION.

*[Signature]* APRIL 30, 2005  
WILSON OKAMOTO CORP. LIC. EXP. DATE

STATE OF HAWAII  
DEPARTMENT OF TRANSPORTATION  
HIGHWAYS DIVISION

**SITE PLAN**  
**ROUTE NO. 19**  
*Pedestrian Facilities & ADA Compliance  
at Various Locations on Hawaii  
Fed. Aid Proj. No. CMAQ-0100(66)*

Scale: As Shown ET3 Date: January 2005

**SHEET No. 3 OF 3 SHEETS**

**SITE PLAN - KIHOLLO SCENIC LOOKOUT (IMPROVED CONDITION)**  
SCALE: 1" = 10'-0"

01/26/05 C.O. ADDED THIS SHEET

DATE	REVISION
------	----------

ORIGINAL PLAN	DATE
SURVEY PLOTTED BY	
DRAWN BY	
DESIGNED BY	
QUANTITIES BY	
CHECKED BY	
NOTE BOOK	
No.	