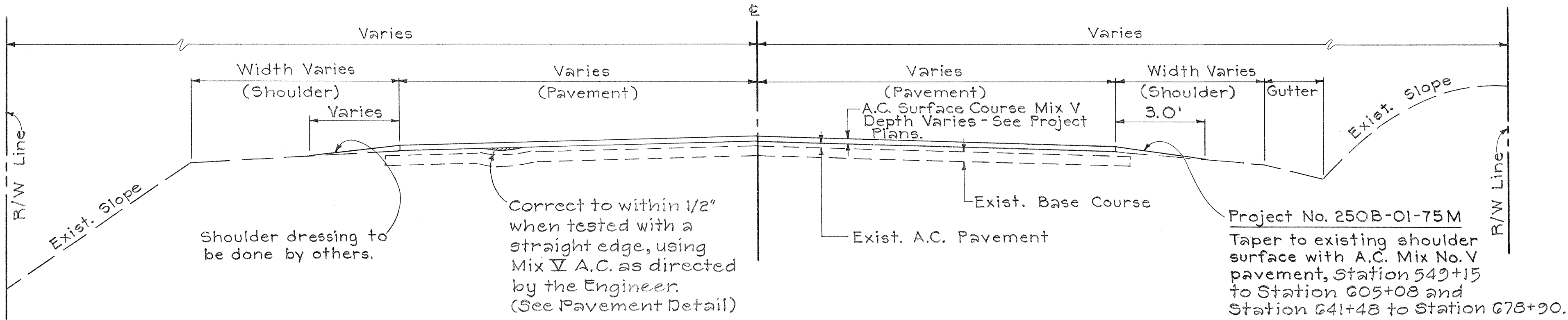
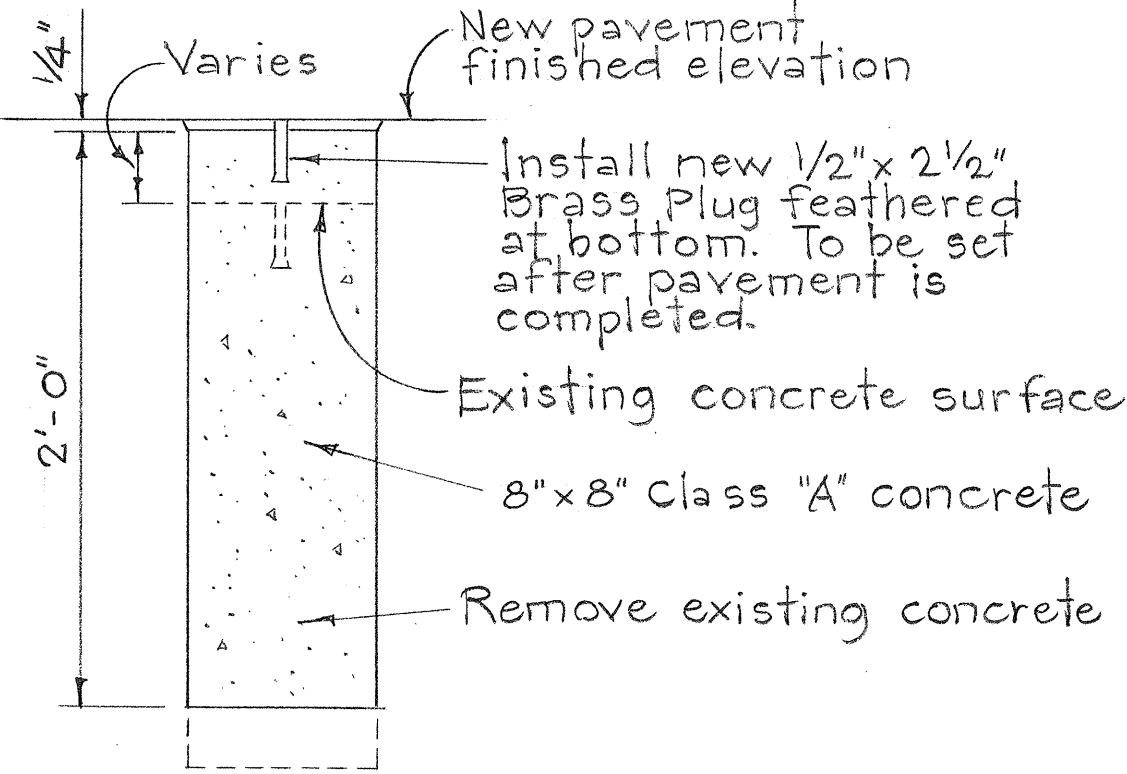


FED. ROAD DIST. NO.	STATE	PROJ. NO.	FISCAL YEAR	SHEET NO.	TOTAL SHEETS
HAWAII	HAW.	250A-01-75M 270B-01-75M	'75	2	?

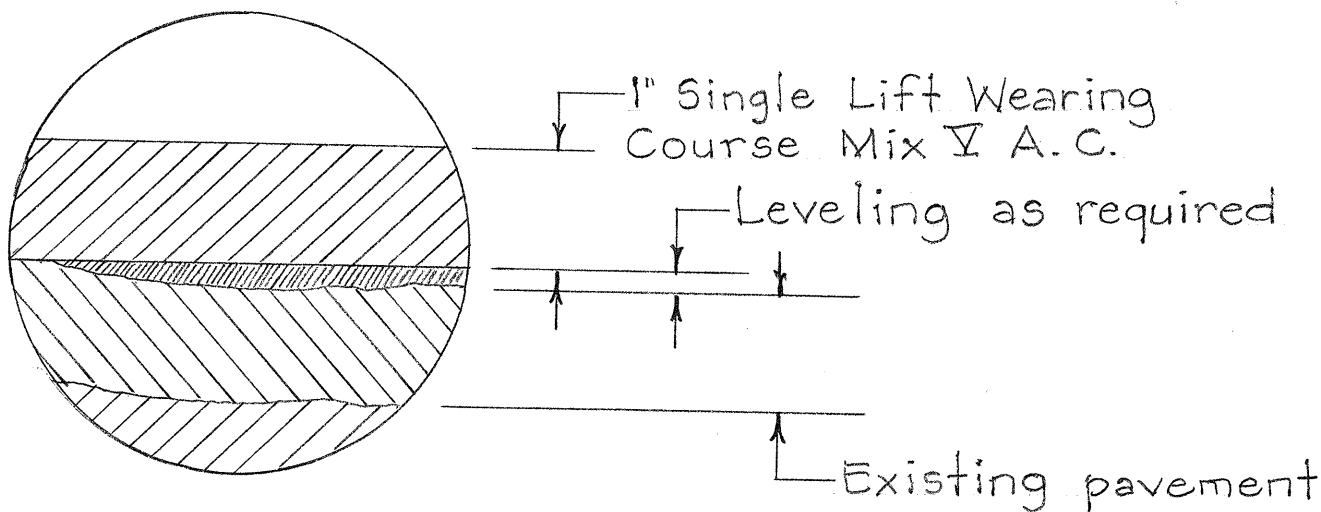


TYPICAL SECTION  
Scale: 3/8" = 1'-0"

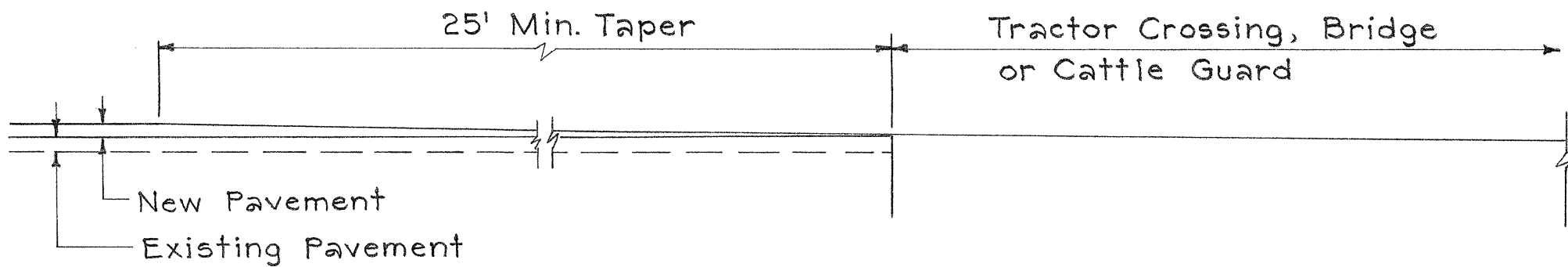
NOTE: See project plans for pavement widths and limits of work.



DETAIL FOR RECONSTRUCTED  
AND REFERENCE  
SURVEY MONUMENT  
(NOT TO SCALE)



TYPICAL PAVEMENT DETAIL  
Not To Scale

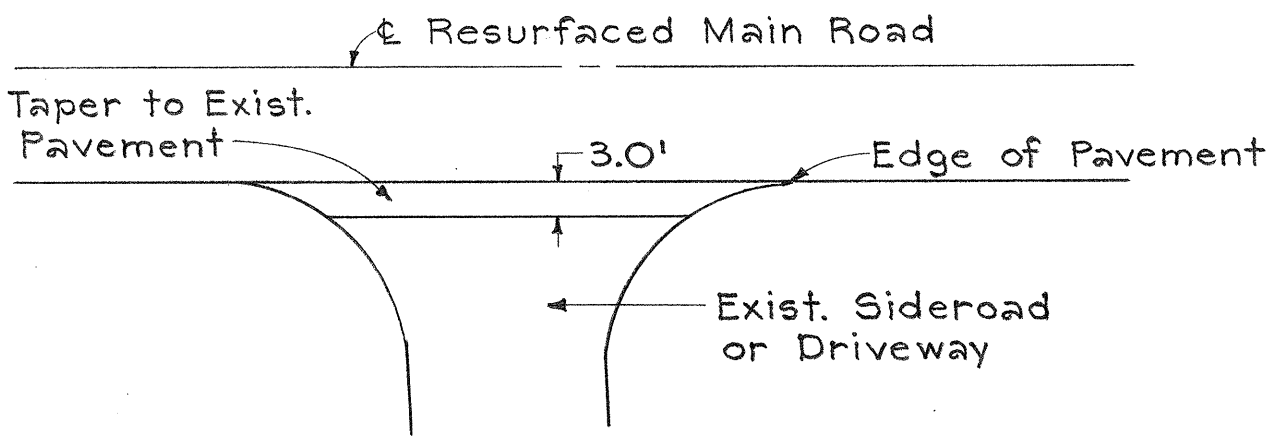


RESURFACING DETAIL TO MEET EXISTING TRACTOR CROSSING,  
BRIDGE OR CATTLE GUARD

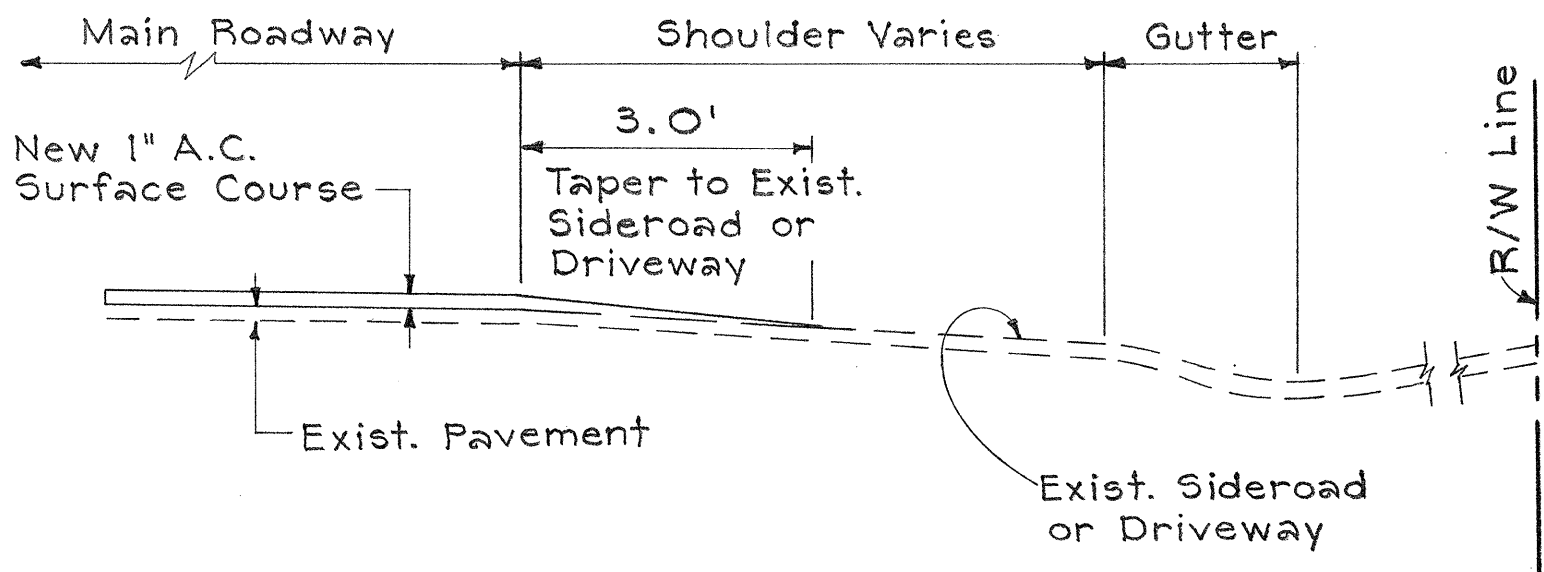
Scale: 3/8" = 1'-0"

#### GENERAL NOTES :

- Existing pavement surface variable. Surface indicated here is not intended to represent any specific location.
- Centerline striping to be done by others.
- Wherever a definite widening of the existing pavement is evident on curved sections of the highway, resurfacing shall be carried to the limits of the existing pavement utilizing either full depth pavement or tapers as necessary.
- All Centerline and Reference Monuments to be referenced by others.



TYPICAL PLAN SIDEROAD  
& DRIVEWAY CONNECTION  
(NOT TO SCALE)



TYPICAL SECTION SIDEROAD  
& DRIVEWAY CONNECTION  
(NOT TO SCALE)

STATE OF HAWAII  
DEPARTMENT OF TRANSPORTATION  
HIGHWAYS DIVISION

TYPICAL SECTIONS & DETAILS  
FOR  
RESURFACING OF HIGHWAYS  
AT VARIOUS LOCATIONS  
ISLAND OF HAWAII

Scale: As Noted      Date: Sept. 1974  
SHEET No. 1 OF 1 SHEETS

SURVEY PLOTTED BY	DATE
DESIGNED BY	
TRACED BY	
DESIGNED BY	
QUANTITIES BY	
CHECKED BY	
ORIGINAL PLAN	
NOTE BOOK	
NO.	