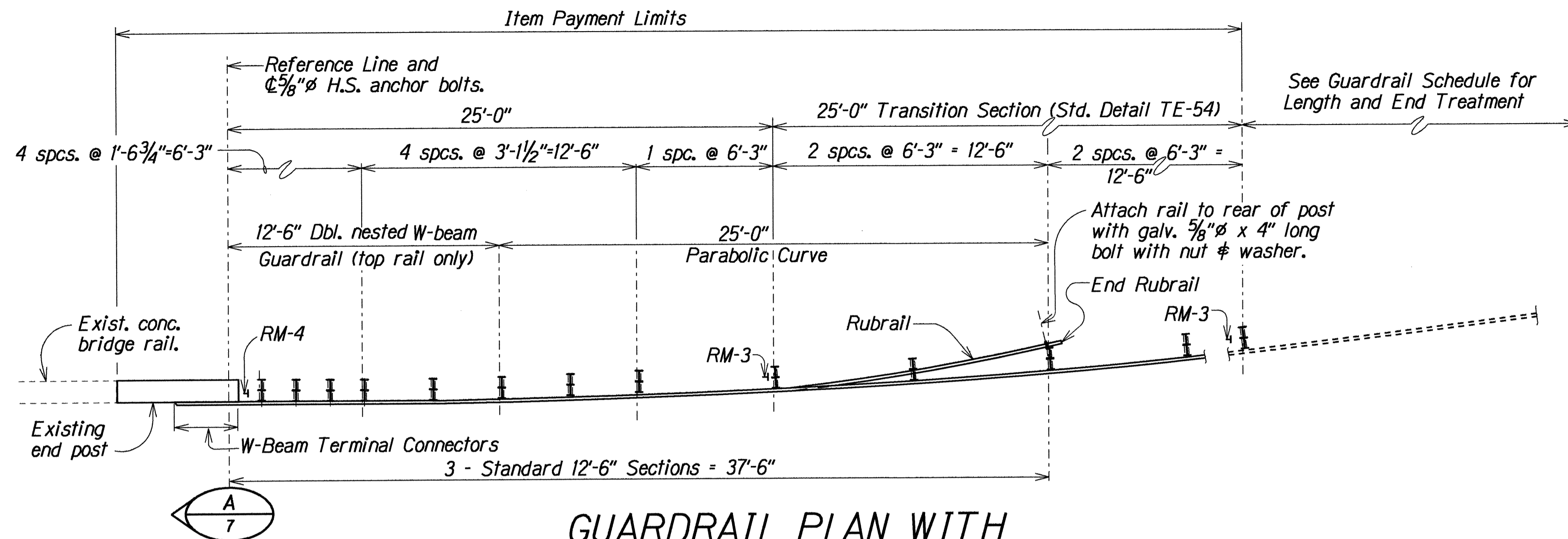


FED. ROAD DIST. NO.	STATE	PROJ. NO.	FISCAL YEAR	SHEET NO.	TOTAL SHEETS
HAWAII	HAW.	HWY-H-06-94	1994	7	7

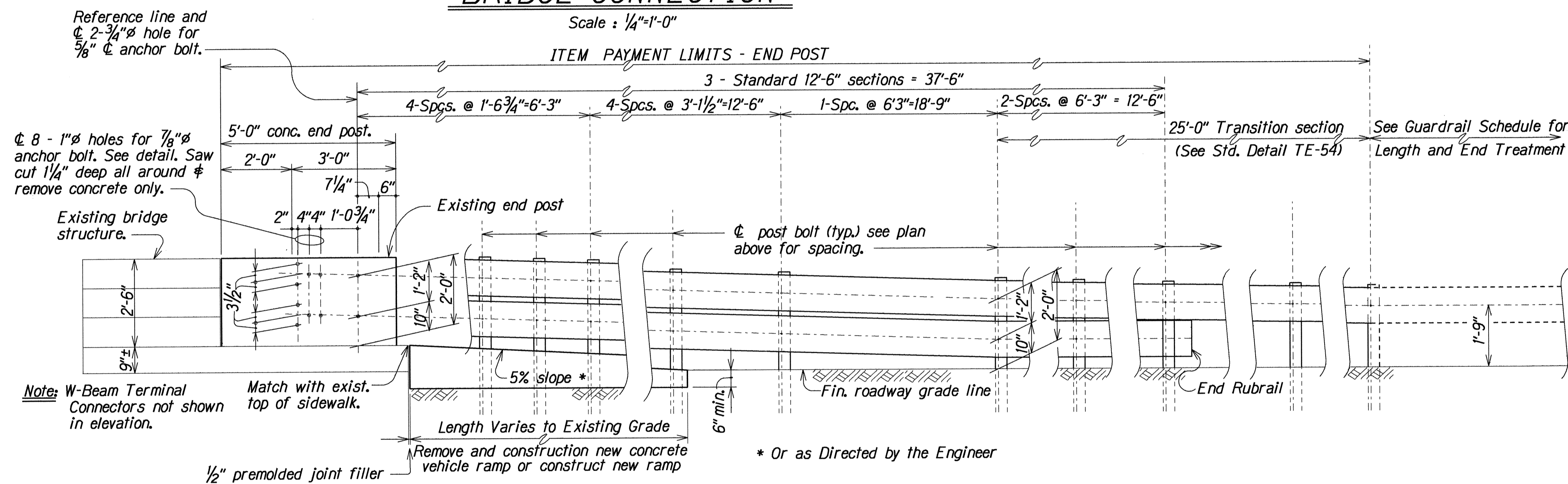
# **NOTE:**

- See Standard Specifications for Road and Bridge Construction (Hawaii 1985) and special provisions.
- Anchor bolts shall be high strength bolts conforming to the requirements of ASTM A 325. Bolt length shall be such that a snug fit of the elements and full thread engagement plus 1/4" (Max.) is attained.
- "Terminal Connector," anchor bolts, nuts and washers shall be hot-dip galvanized after fabrication.
- Construction of ramp shall conform to the requirements of Section 608-Sidewalks, of the Standard Specifications.
- Any damage to existing structures or roadway due to the Contractor's operation shall be repaired at his expense, to the satisfaction of the Engineer.
- The work necessary to connect guardrail to concrete end post shall include all labor, materials, tools, equipment and incidentals necessary to complete the work. This work will be incidental to Item 606-8010-End Post Connection, Type I.
- The Contractor shall verify all dimensions in field before commencing with work.
- The Contractor is responsible to locate and avoid damage to any underground utilities or structures that will be affected by his operations. The Contractor shall be responsible for any and all damages to utilities or structures arising from his operations.
- The Contractor shall install 2-#6 X 2'-0" dowels per ramp between the existing concrete sidewalk or curb and new concrete ramp. Dowels shall be installed in 1 3/4" diameter drilled holes 12" into existing concrete walk or curb and sealed with epoxy grout, with a minimum of 3" clear from outside edges of sidewalk or curb.
- The work involved in the bridge connection consist of all preparations for the connection, including but not limited to drilling of holes, removal and reconstruction of portion of concrete section, erection of concrete support block guardrail materials concrete and reinforcing for ramps, premolded joint filler, excavation and grading work within the pay limits specified on the plans. The various type of connections shall be paid for under Item No. 606.8010-End Post Connection, Type I.
- For additional information, and/or information not shown on this plan see State of Hawaii, Department of Transportation Standard Plan Nos TE-50, TE-51, TE-52 TE-54, TE-58, TE-59, TE-60, TE-61, and TE-62.
- Drilling of through holes shall be done in such a manner that will preclude cone puncturing of the daylight end.
- Large impacting or vibratory type of equipment will not be permitted in the removal operation of the designated items nor for drilling of holes.



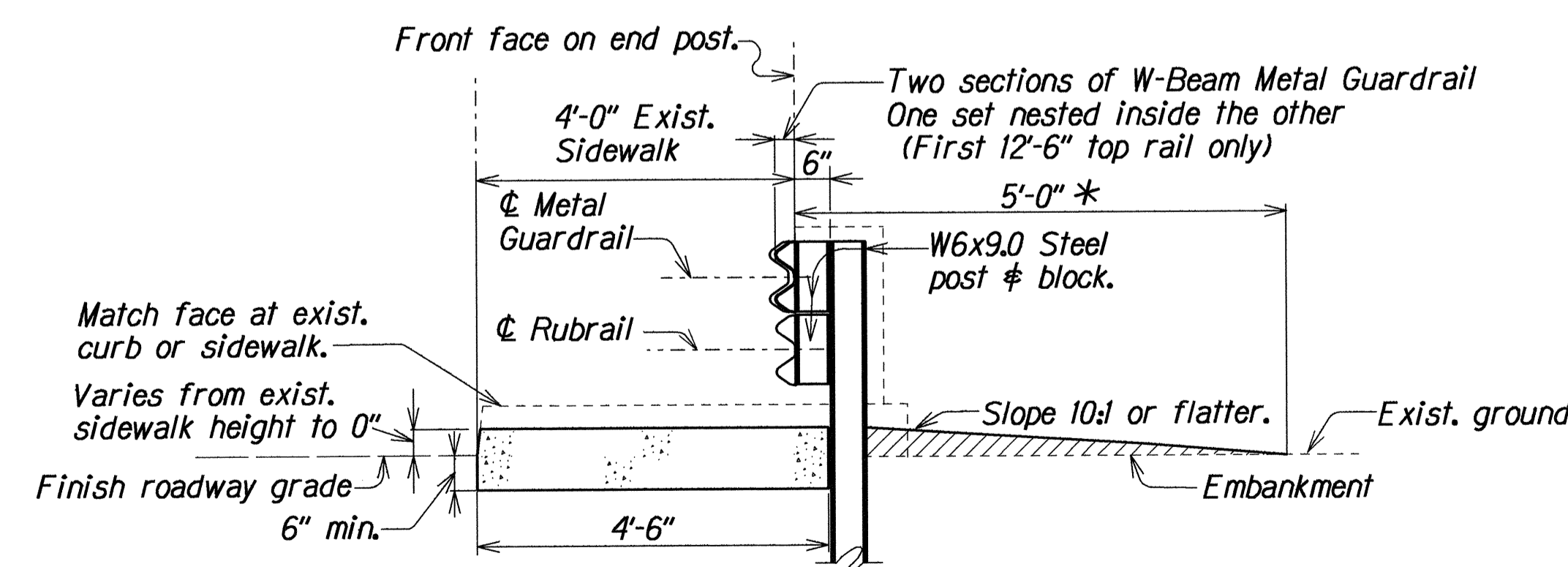
## **GUARDRAIL PLAN WITH BRIDGE CONNECTION**

Scale : 1/4" = 1'-0"



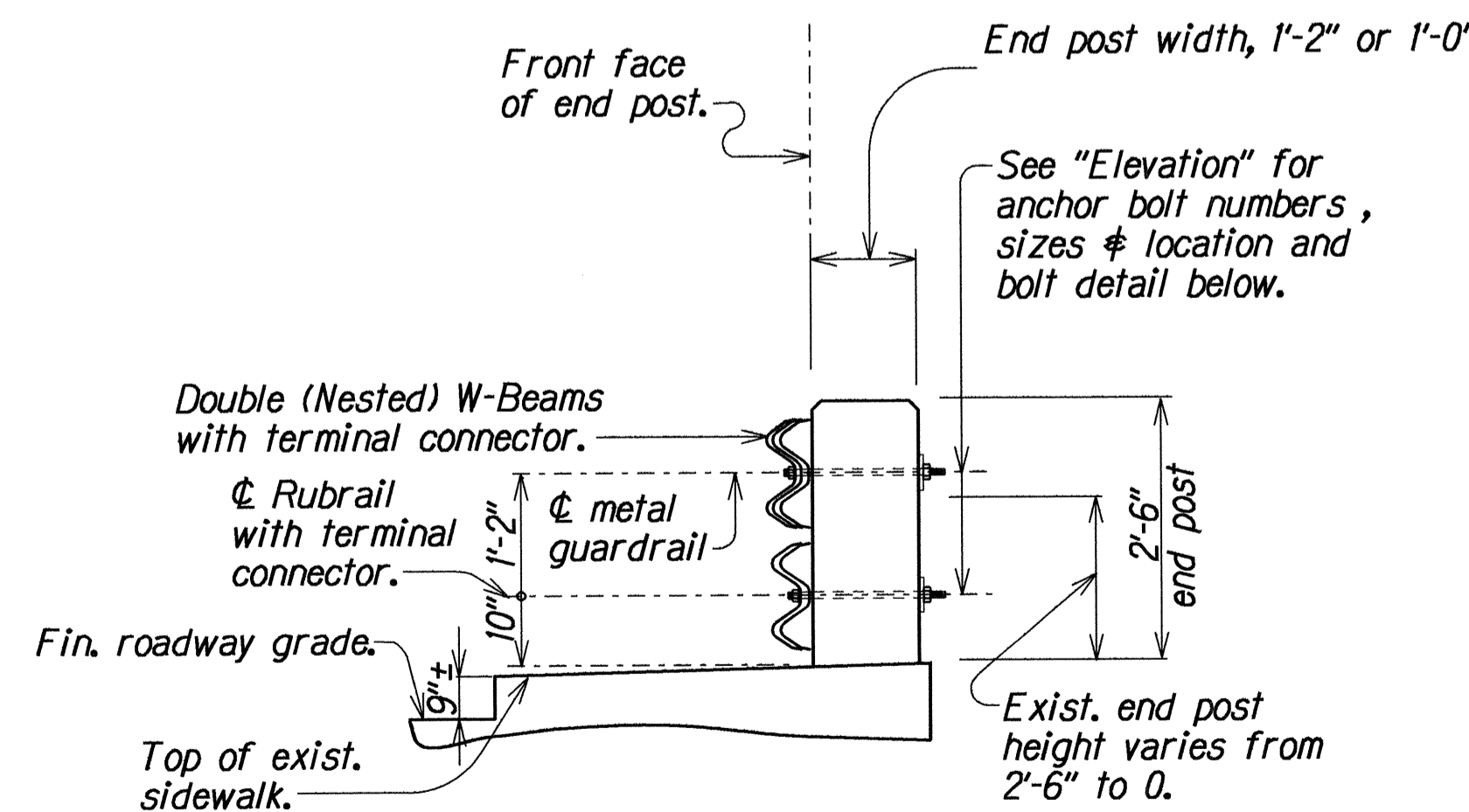
## **ELEVATION AT BRIDGE CONNECTION**

Scale : 1/2" = 1'-0"



## **TYPICAL SECTION THRU RAMP**

Scale : 1/2" = 1'-0"

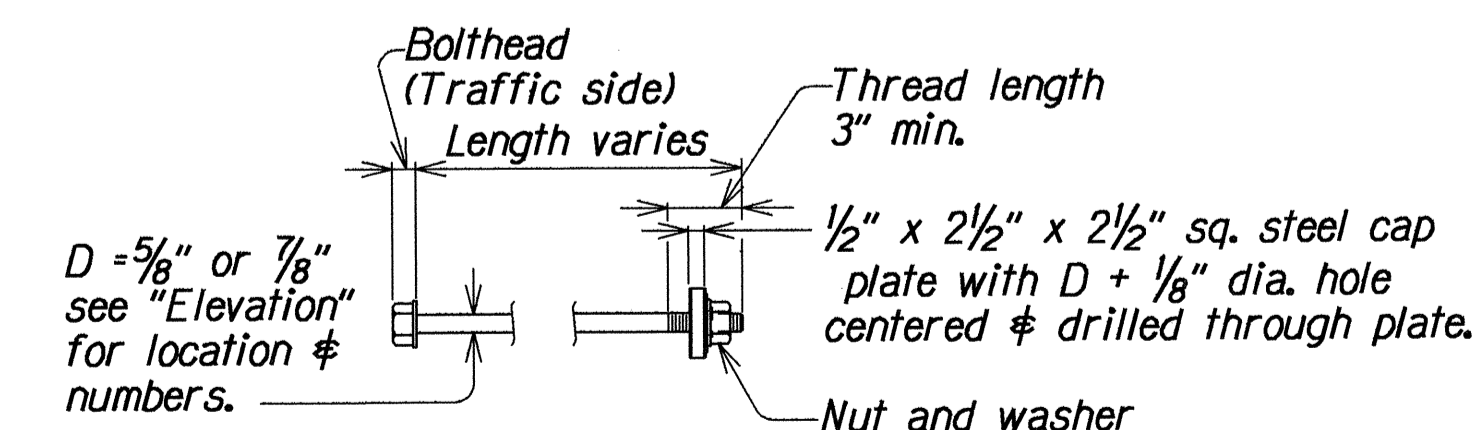


## **SECTION A**

Not to scale

## **END POST ANCHOR BOLT**

Not to scale



STATE OF HAWAII DEPARTMENT OF TRANSPORTATION HIGHWAYS DIVISION
<b>BRIDGE CONNECTION-TYPE I DETAILS AND NOTES</b>
GUARDRAIL & SHOULDER IMPROVEMENTS AT VARIOUS LOCATIONS ON HAWAII PROJECT NO. HWY-H-06-94
Scale: As Shown Date: May, 1994
SHEET No. 1 OF 1 SHEETS