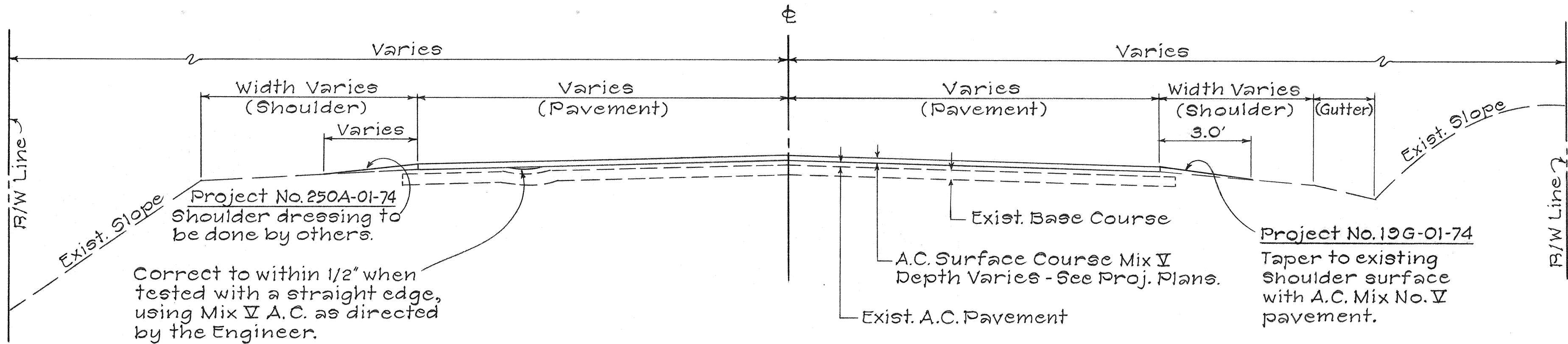
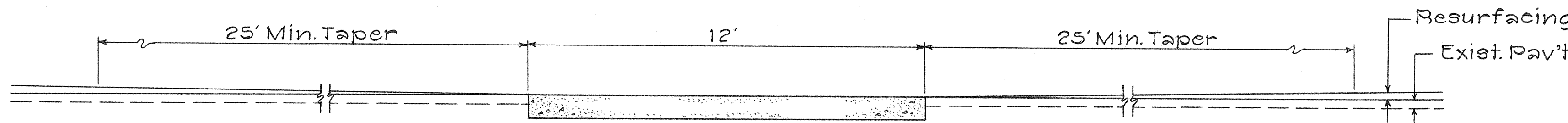


FED. ROAD DIST. NO.	STATE	PROJ. NO.	FISCAL YEAR	SHEET NO.	TOTAL SHEETS
HAWAII	HAW.	19G-01-74 250A-01-74	'74	3	11

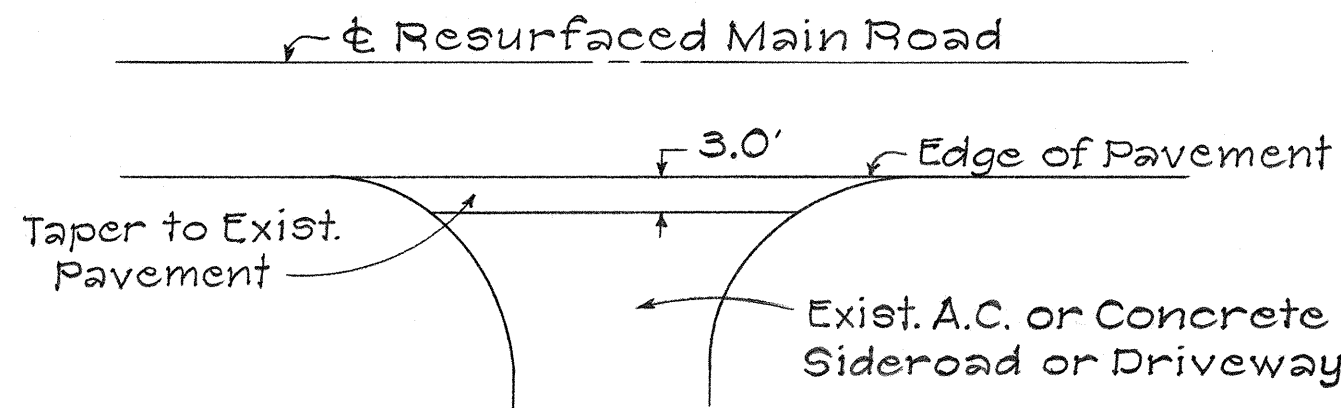


TYPICAL SECTION
Scale: 3/8"=1'-0"

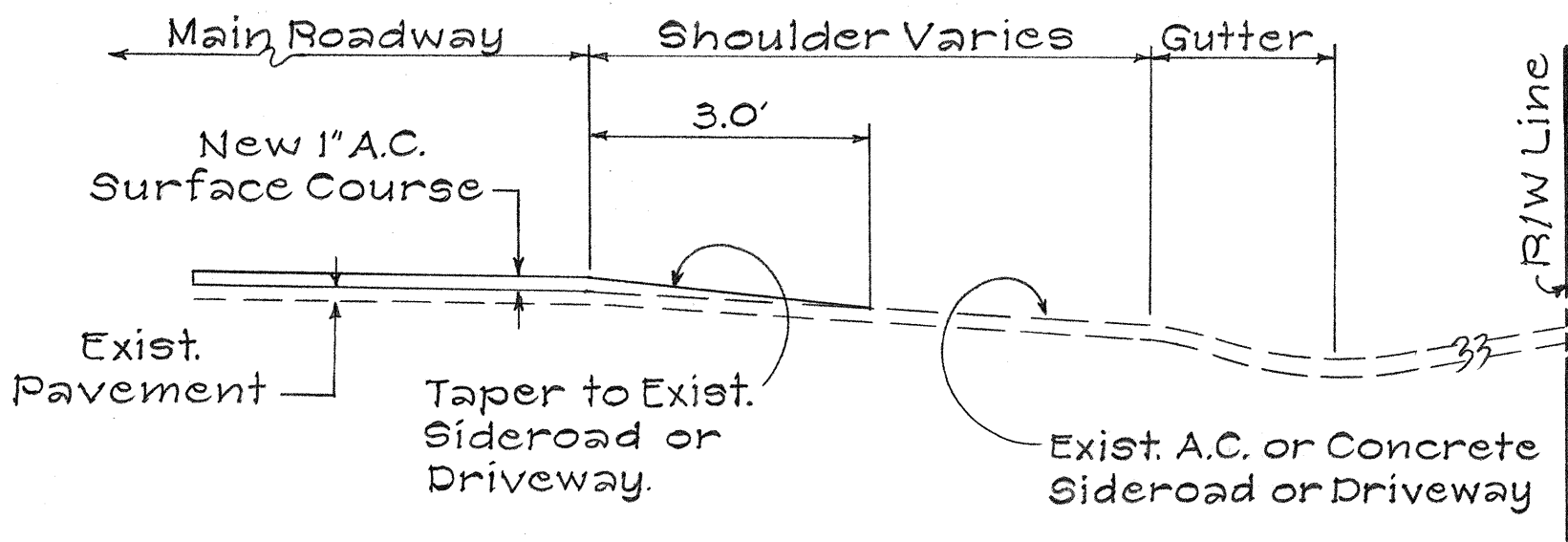


RESURFACING DETAIL TO MEET EXISTING TRACTOR CROSSING
Scale: 3/8"=1'-0"

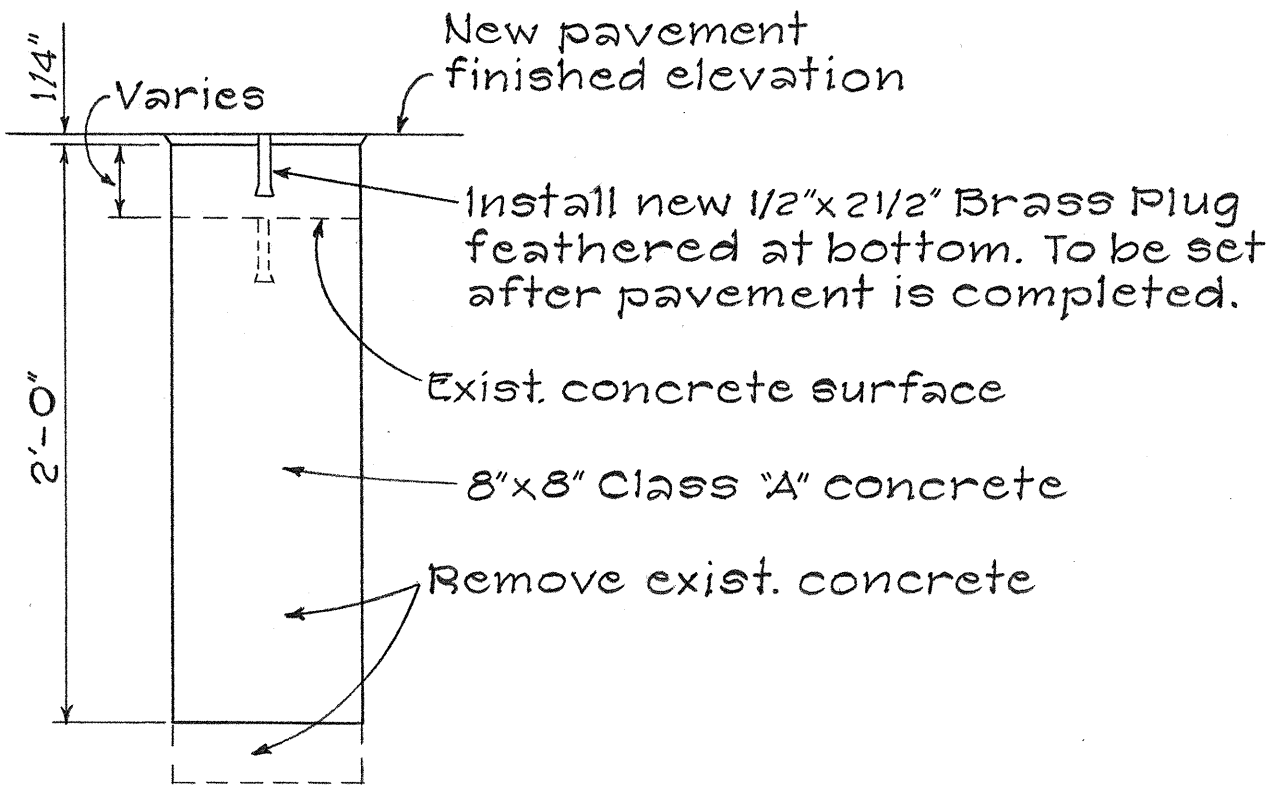
- GENERAL NOTES:**
- Existing pavement surface variable. Surface indicated here is not intended to represent any specific location.
 - Centerline and edge of pavement striping to be done by others.
 - See project plans for limits of work.



TYPICAL PLAN SIDEROAD & DRIVEWAY CONNECTION
(NOT TO SCALE)



TYPICAL SECTION SIDEROAD & DRIVEWAY CONNECTION
(NOT TO SCALE)



DETAIL FOR RECONSTRUCTED & AND REFERENCE SURVEY MONUMENT
(NOT TO SCALE)

STATE OF HAWAII
DEPARTMENT OF TRANSPORTATION
HIGHWAYS DIVISION

PLAN SHOWING
TYPICAL SECTIONS
FOR
RESURFACING OF HIGHWAYS
AT VARIOUS LOCATIONS
ISLAND OF HAWAII
Scale: As Shown Date: Oct, 1973
SHEET No. 1 OF 1 SHEETS

DESIGNED BY	DATE
DRAWN BY	
CHECKED BY	
NOTED BY	
ORIGINAL PLAN	