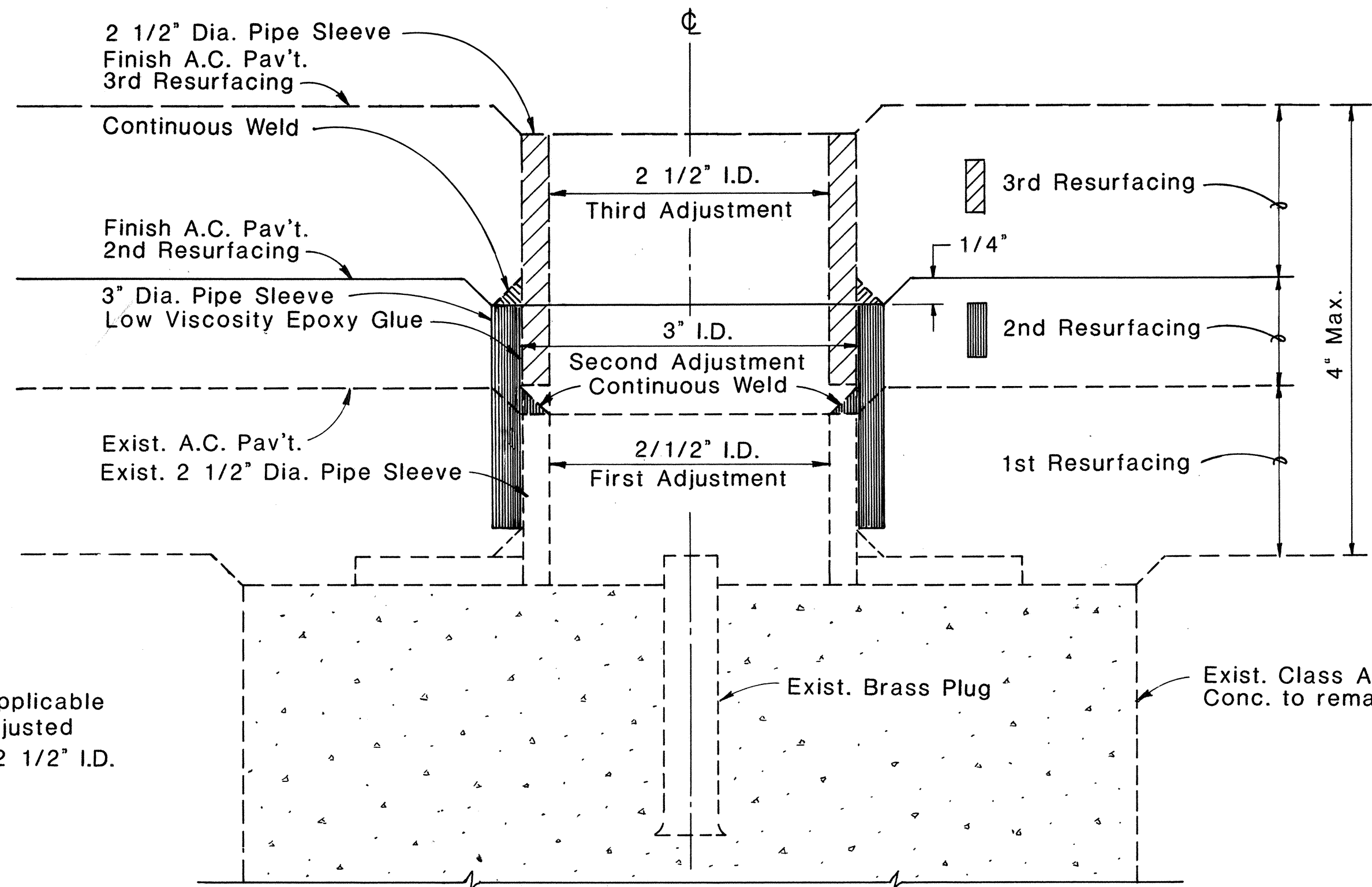


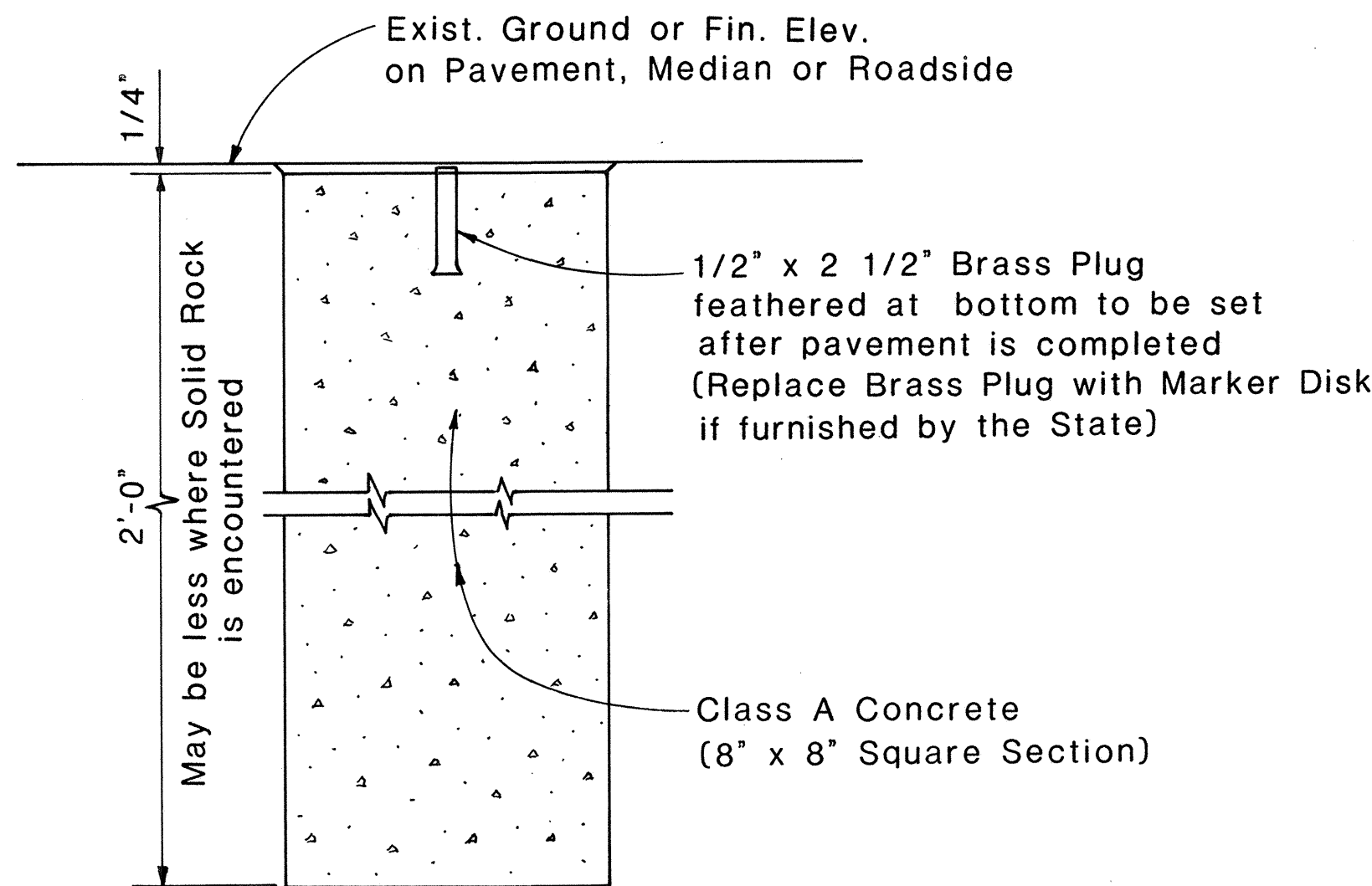
FED. ROAD DIST. NO.	STATE	PROJ. NO.	FISCAL YEAR	SHEET NO.	TOTAL SHEETS
HAWAII	HAW.	104-01-86M, 106-01-86M, 108-01-86M, 110-01-86M, 112-01-86M	1986	10	13



NOTE:  
This detail is applicable only if initial adjusted pipe sleeve is 2 1/2" I.D.

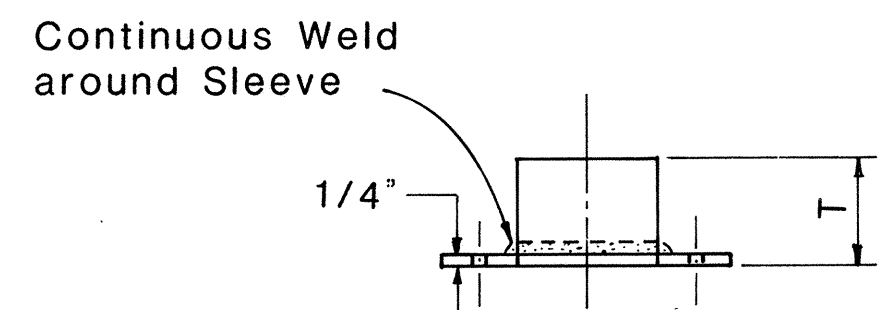
## DETAIL FOR CENTERLINE MONUMENT (2ND & 3RD) ADJUSTMENTS

FULL SIZE



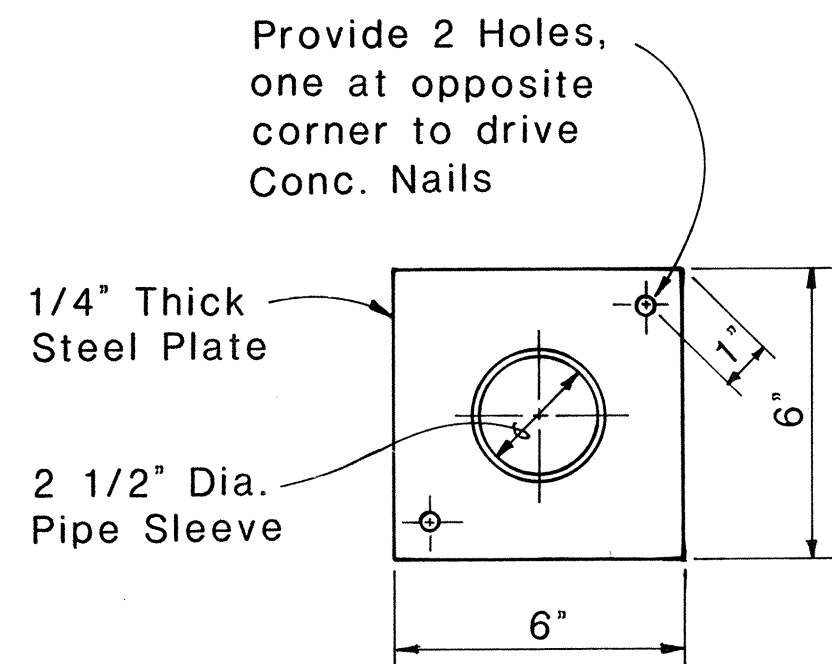
## DETAIL FOR CENTERLINE & REFERENCE SURVEY MONUMENT

Scale: 1 1/2" = 1'-0"

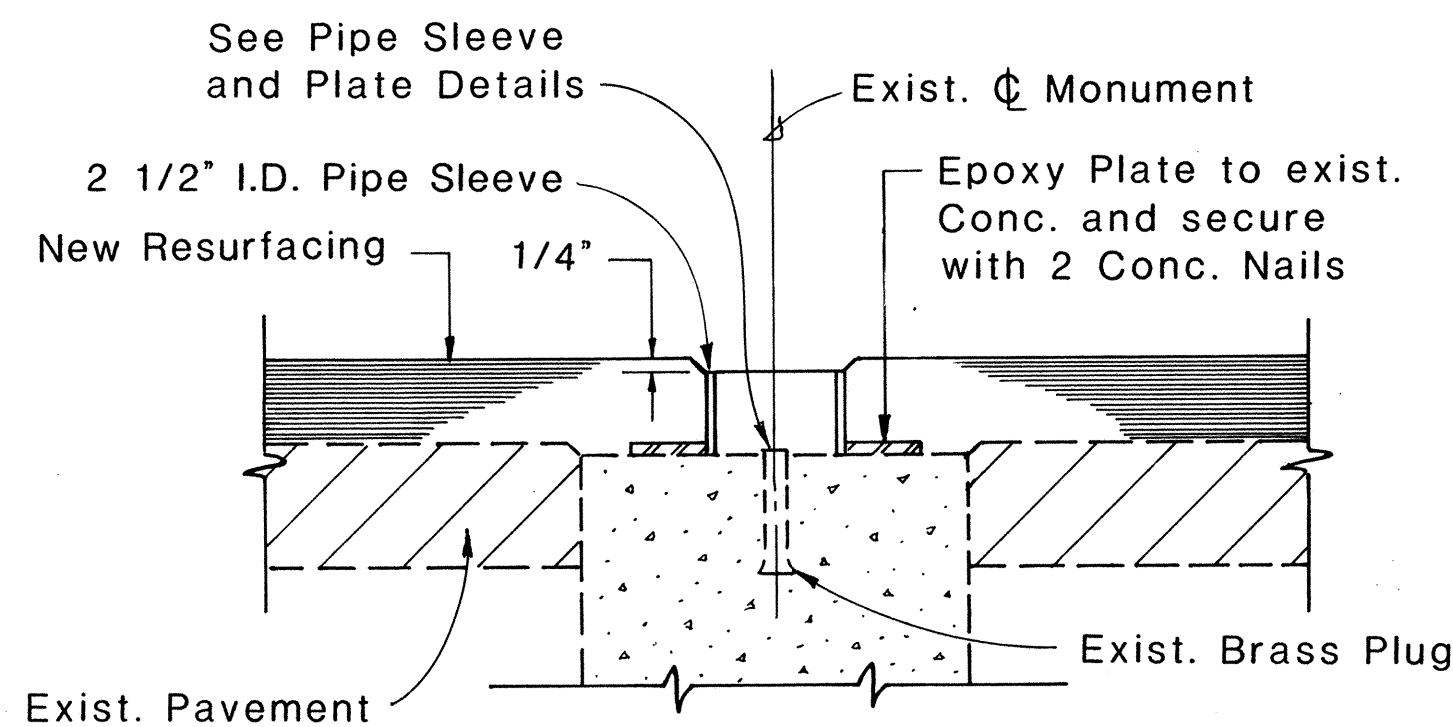


T = New Resurfacing Thickness

### PIPE SLEEVE & PLATE ELEVATION



### PIPE SLEEVE & PLATE PLAN



### SECTION THRU MONUMENT

#### NOTE

These Adjustment Details also apply to Centerline Monuments utilized as Stationline Reference Points.

## DETAILS FOR ADJUSTED CENTERLINE MONUMENT

Scale: 3" = 1'-0"

APPROVAL RECOMMENDED:

*Mike Minna* 6-20-83  
HIGHWAY DESIGN ENGINEER DATE

APPROVED:  
*Ed Fujiyama* 6-22-83  
ASSISTANT CHIEF, ENGINEERING DATE

NO.	REVISION	APPROVED	
		BY	DATE
1	Delete Note No. 1	<i>ED</i>	11-17-84

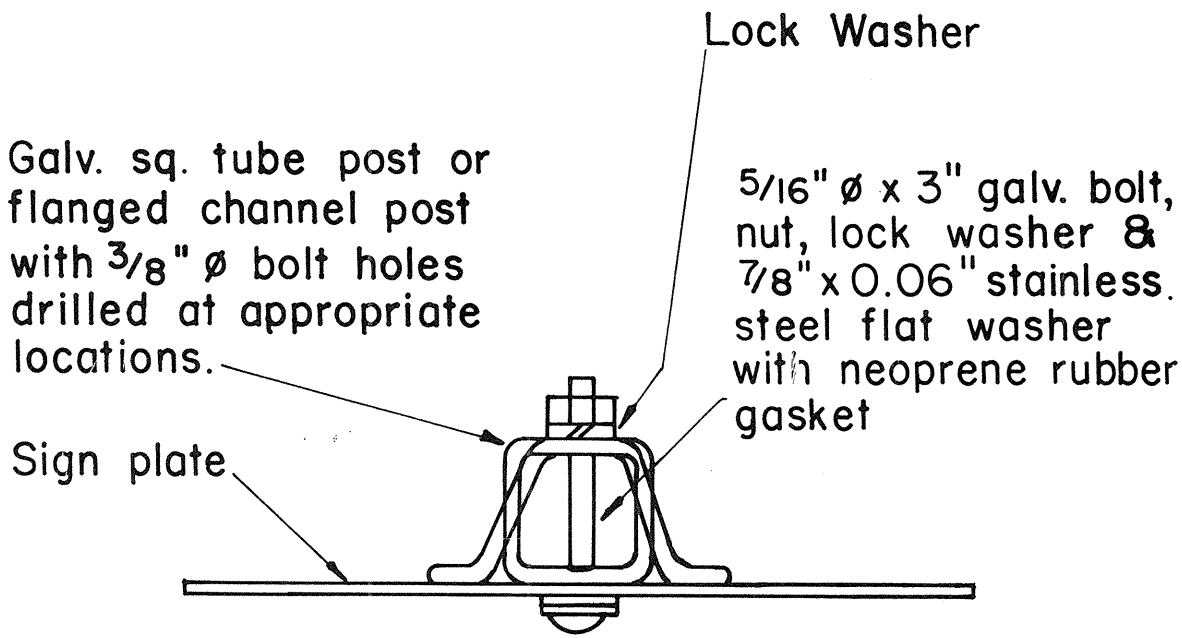
STATE OF HAWAII DEPARTMENT OF TRANSPORTATION HIGHWAYS DIVISION	
<b>STANDARD DETAILS</b>	
<b>CENTERLINE AND REFERENCE SURVEY MONUMENT</b>	
Scale: As Shown	Date: May, 1983
SHEET No. 10	OF 13 SHEETS

ORIGINAL PLAN	DATE
DESIGNED BY	
TRACED BY	
NOTED BY	
CHECKED BY	
NO.	

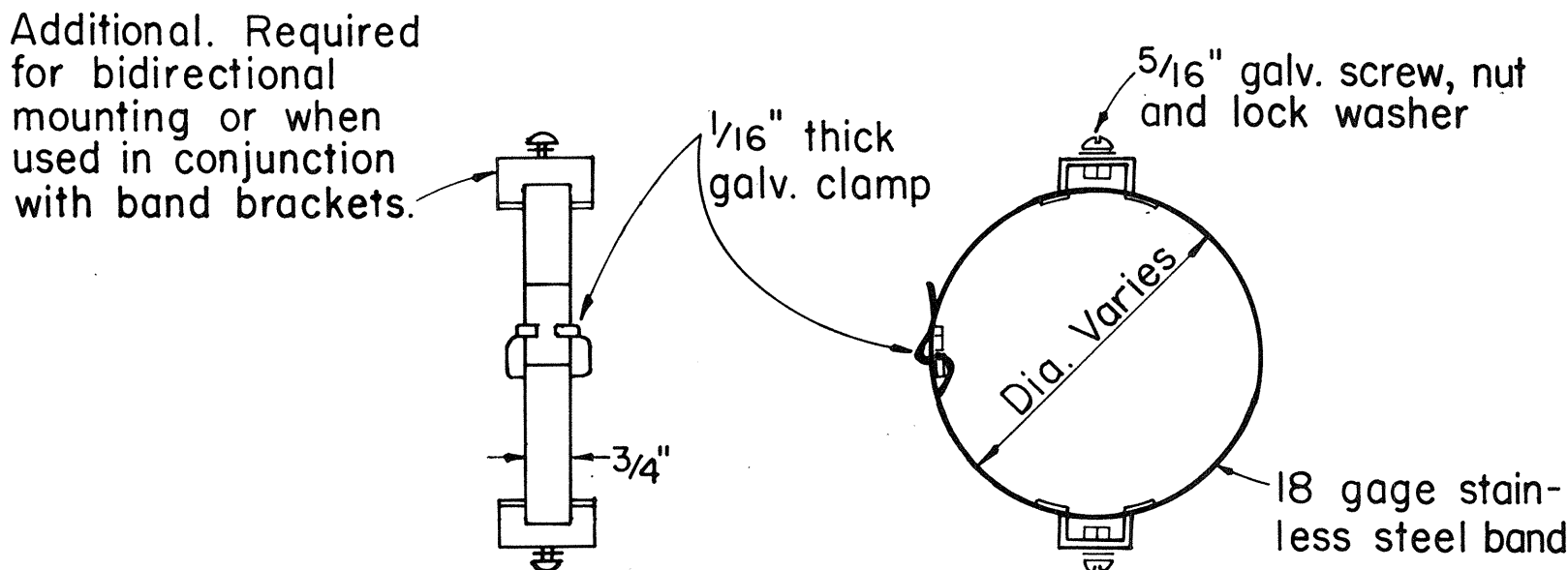
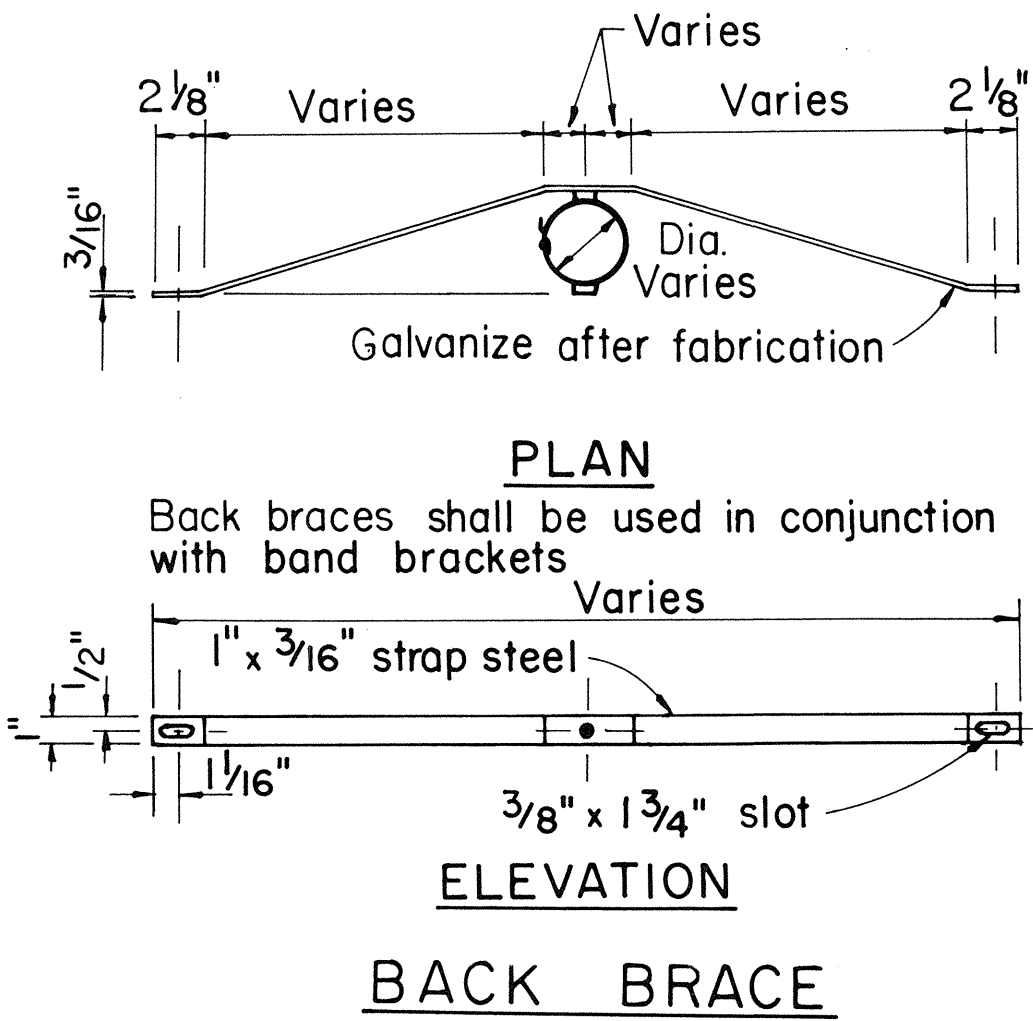
FED. ROAD DIST. NO.	STATE	PROJ. NO.	FISCAL YEAR	SHEET NO.	TOTAL SHEETS
HAWAII	HAW.	194-01-86M 195-01-86M 198B-01-86M 11B-01-86M	1986	11	13

### GENERAL NOTES

- Signs shall be placed in conformance with positions shown and described in the "Manual on Uniform Traffic Control Devices for Streets and Highways", 1978, Part II, Section 2A-2I, as amended, and as supplemented herein.
- Sign 48" and wider or larger than 10 sq. ft. in area shall be mounted on two or more sign posts except as noted below.
- Signs 48" and wider or larger than 10 sq. ft. in area may be mounted on objects other than sign posts (i.e. on highway lighting poles) as follows:
  - Signs 48" and wider but less than 10 sq. ft. in area shall be mounted with a minimum of two sets of band bracket and back braces.
  - Signs larger than 10 sq. ft. and less than 28 sq. ft. in area shall be mounted with a minimum of two sets of band brackets and back braces.
  - Signs larger than 28 sq. ft. in area shall be mounted with a minimum of three sets of band bracket and back braces.
- All parking restriction signs with arrows shall be mounted 45° to the line of traffic flow.
- Sign posts shall extend 3 1/2" above each sign, where required, for attachment of City and County street name signs.
- (R) or (L) indicates right or left and shown on the plans.
- See plans for special details of signs along bikeways.
- The minimum lateral distances shown are guidelines and shall be exceeded whenever possible. The Contractor shall place signs at the maximum practical lateral distance from the edge of the traveled way up to 30 feet and shall utilize protected locations whenever possible. Final locations of all signs shall be approved by the Engineer.
- Signs in medians shall be placed at midpoint of median up to a maximum distance of 30 feet from the edge of traveled way. When appropriate, signs for opposing directions shall be placed back to back.
- Anchor bases shall be installed for all signpost installations, unless otherwise shown or directed. See sheets DT 100A and DT 100B.



### GALVANIZED SQUARE TUBE OR FLANGED CHANNEL POST



### LEFT SIDE VIEW BAND BRACKET

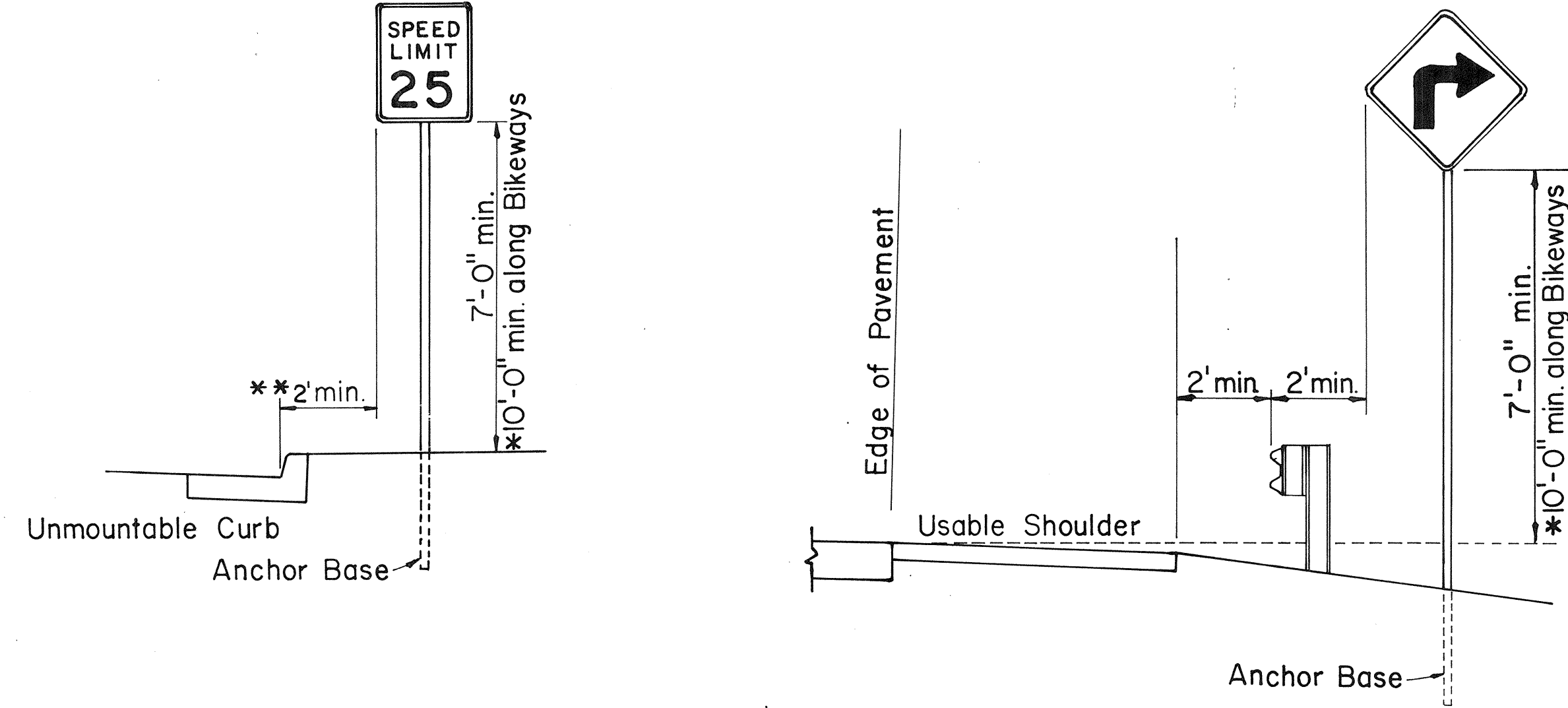
APPROVAL RECOMMENDED:  
*Erich Tanaka* 10/14/83  
 TRAFFIC ENGINEER DATE

APPROVED:  
*Bl. Fujiyama* 10-18-83  
 ASSISTANT CHIEF, ENGINEERING DATE

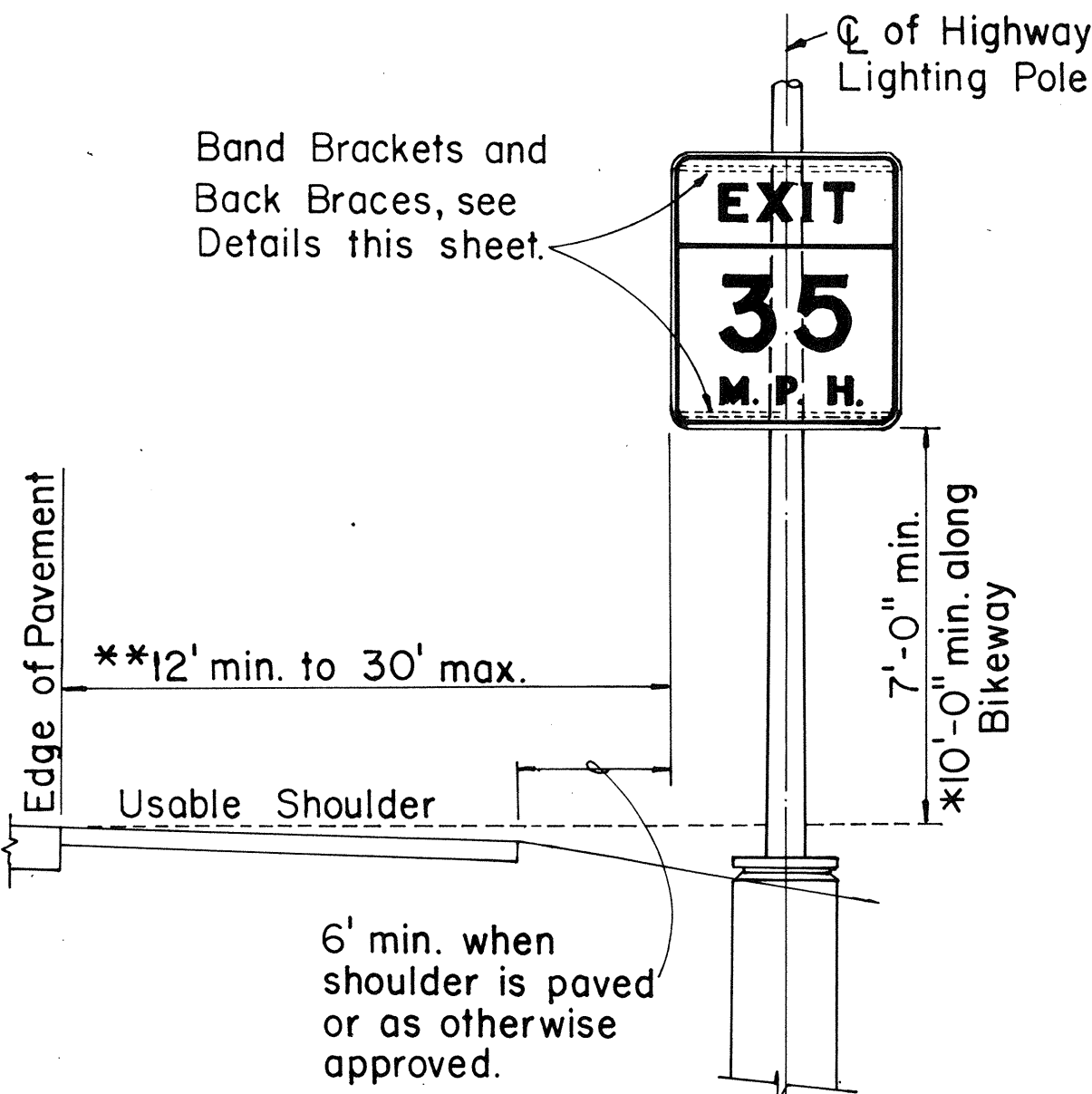
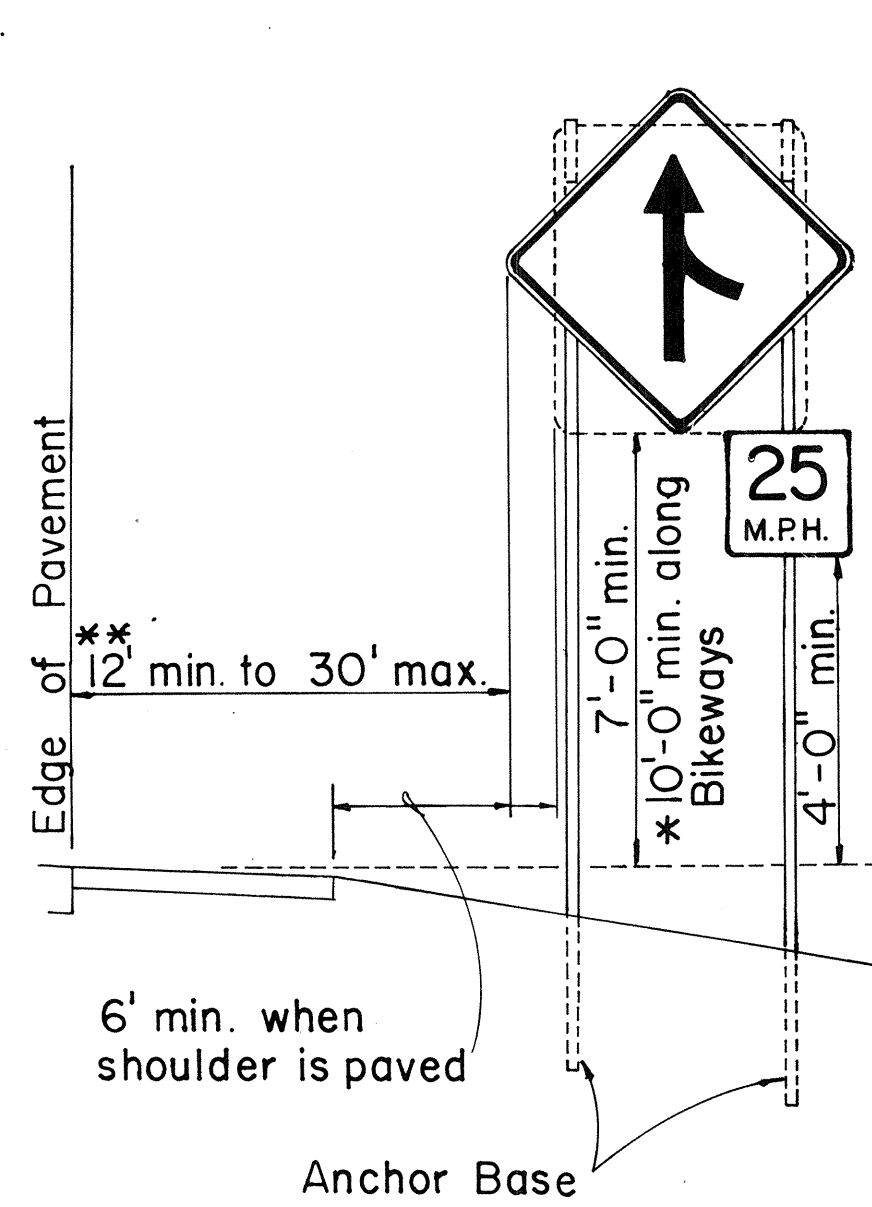
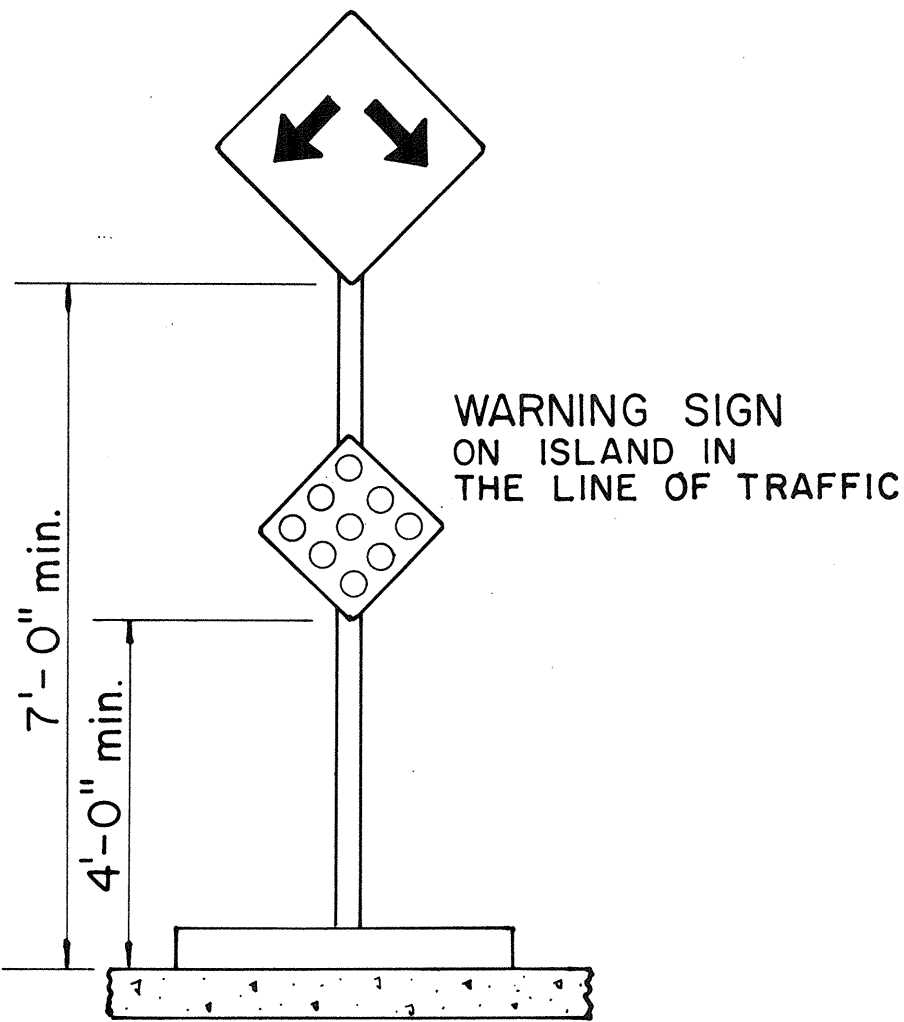
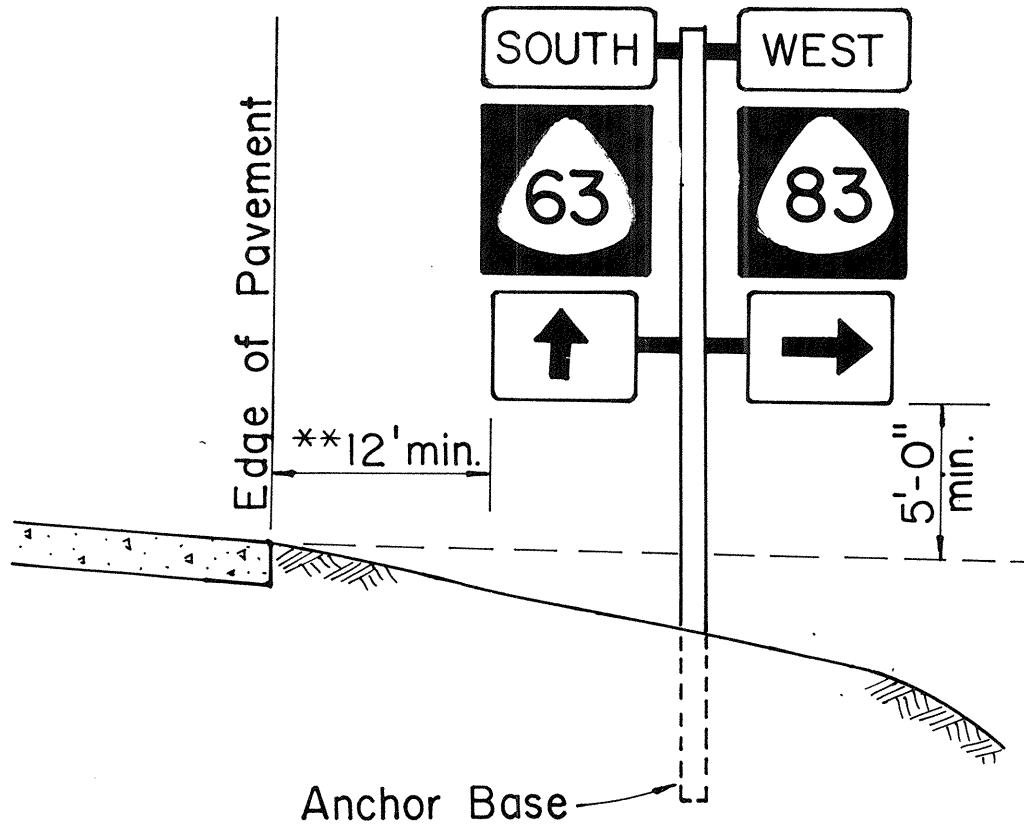
STATE OF HAWAII  
 DEPARTMENT OF TRANSPORTATION  
 HIGHWAYS DIVISION

STANDARD DETAILS  
 MISCELLANEOUS SIGN DETAILS

Not to Scale: Oct. 1983  
 SHEET No. OF SHEETS DT 100



### ROADSIDE ASSEMBLY RURAL DISTRICT



### HEIGHT AND LATERAL LOCATION OF SIGNS TYPICAL INSTALLATION

ORIGINAL PLAN	SURVEY PLOTTED BY	DATE
NOTE BOOK	DRAWN BY	
	DESIGNED BY	
	QUANTITIES BY	
	CHECKED BY	



FED. ROAD DIST. NO.	STATE	PROJ. NO.	FISCAL YEAR	SHEET NO.	TOTAL SHEETS
HAWAII	HAW.	104-01-06M 105-01-06M 106-01-06M 110-01-06M	1986	12	13



CW20-1a 48"x48"



CW20-2d 48"x48"



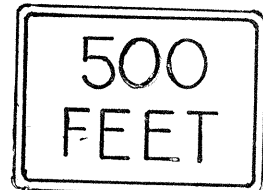
CW20-3b 48"x48"



CW20-4d 48"x48"



CW20-5d(L) 48"x48"



CW20-7c 36"x36"  
24"x18"  
CW20-7c-A 48"x48"  
24"x18"



CW21-1 30"x30"



CW21-2 30"x30"



CW21-3 36"x36"



CW21-4 36"x36"



CW21-5 30"x30"



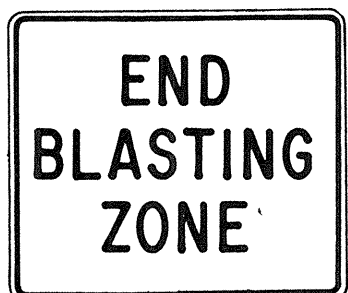
CW21-6 30"x30"



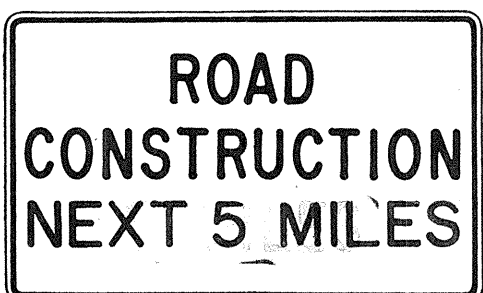
CW22-1b 48"x48"



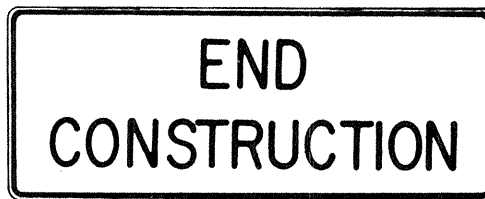
CW22-2 42"x36"



CW22-3 42"x36"



CG20-1(5) 60"x36"



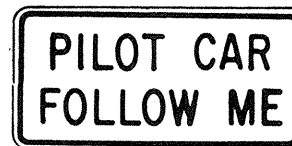
CG20-2 60"x24"



CM4-9(R) 30"x24"



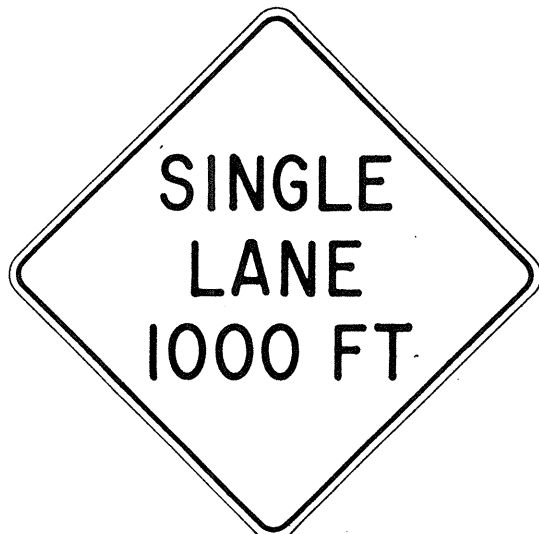
CM4-10(R) 48"x18"



CG20-4 36"x18"



CW23-1 36"x36"



CW23-2b 48"x48"



CW23-3(R) 48"x48"

### GENERAL NOTES

- Sign details shall conform to the latest editions of FHWA publications "Manual on Uniform Traffic Control Devices for Streets and Highways," "Standard Alphabets for Highway Signs," and "Standard Highway Signs," and as amended.
- All construction signs shall be reflectorized.
- All construction signs shall have 3/8" bolt holes drilled at appropriate locations.
- Numerals in ( ) indicates numerals to be inserted for sign message. (R) or (L) indicates right or left.
- For "CW" series signs, suffixes a,b,c and d are as follows:  
a-1500 FT, b-1000 FT,  
c-500 FT and d-AHEAD.

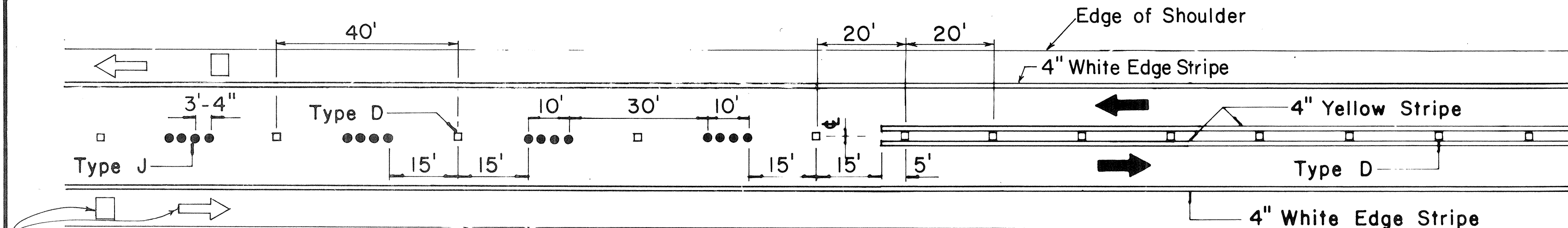
NO.	REVISION	APPROVED BY	DATE
1	Supersedes Sht. DT 104 Approved 12-30-69	H.T.	3/25/72
2	Revised General Note 1	H.T.	10/16/74
3	Revised General Note 2	M.H.	9-16-75
4	Revised General Note 2 and sign CG20-1(5)	H.T.	9-14-76
5	Revised General Note 1 and sign CW20-7c	E.T.	9/10/85

APPROVAL RECOMMENDED:  
Erich Tanaka 3/21/72  
TRAFFIC ENGINEER DATE

APPROVED:  
William S. Sisk 3/23/72  
ASSISTANT CHIEF, ENGINEERING DATE

STATE OF HAWAII DEPARTMENT OF TRANSPORTATION HIGHWAYS DIVISION
STANDARD DETAILS CONSTRUCTION SIGNS
NOT TO SCALE
SHEET No. OF SHEETS DT 104

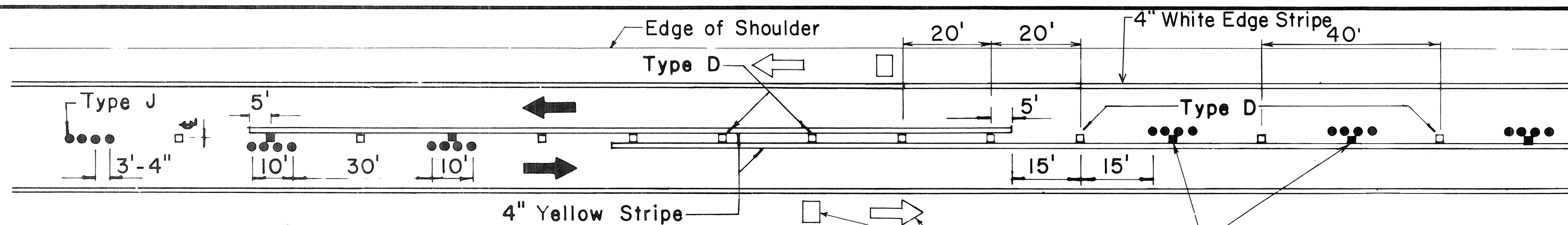
FED. ROAD DIST. NO.	STATE	PROJ. NO.	FISCAL YEAR	SHEET NO.	TOTAL SHEETS
HAWAII	HAW.	10H-01-86M 10G-01-86M 10B-01-86M 11B-01-86M	1986	13	13



Pavement Symbols, Words, Arrows, and Legends for Bike Route as Required on Plans.

## PASSING PERMITTED AND PASSING PROHIBITED

TWO - LANE



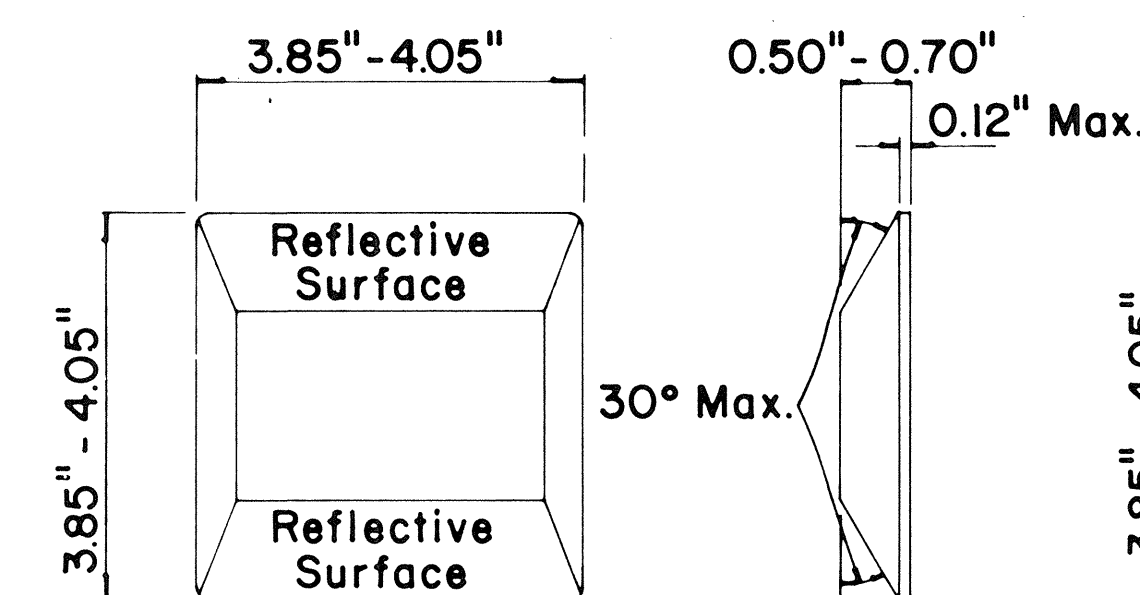
Pavement Symbols, Words, Arrows, and Legends for Bike Route as Required on Plans.

## PASSING PROHIBITED ZONES

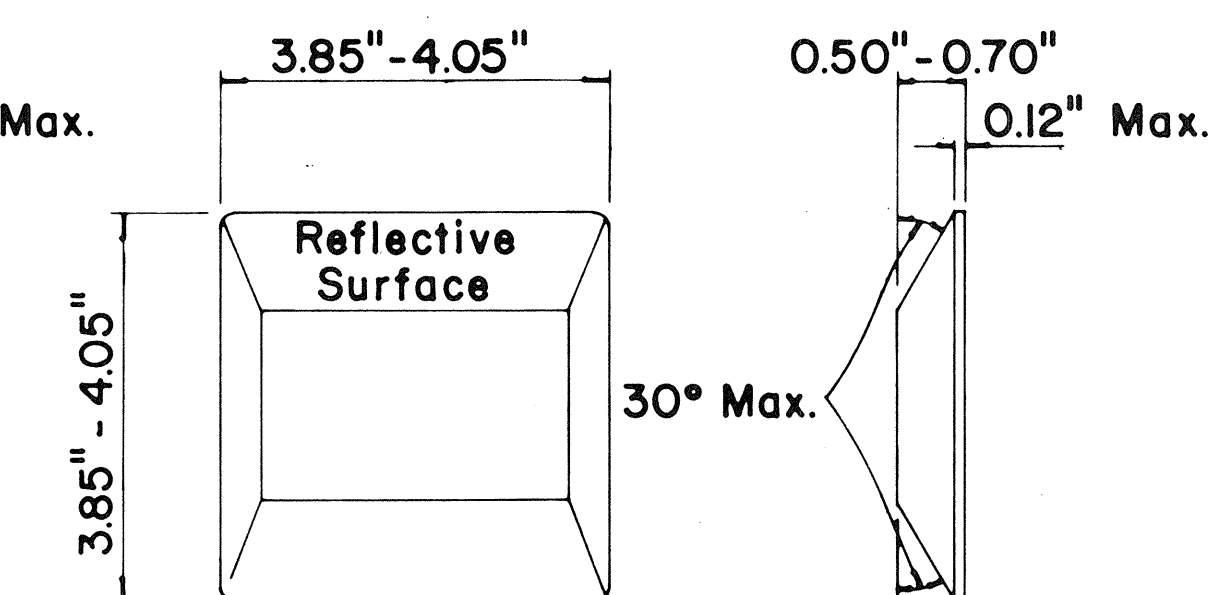
**TYPE A**  
NON - REFLECTIVE WHITE MARKER

**TYPE C**  
RED - CLEAR REFLECTIVE MARKER

**TYPE J**  
NON - REFLECTIVE YELLOW MARKER

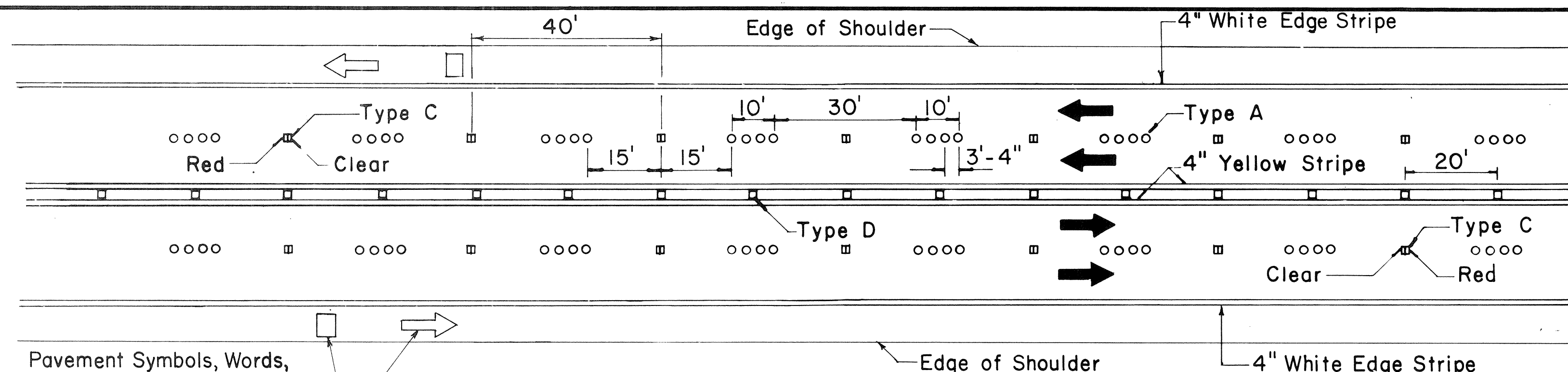


**TYPE D**  
TWO-WAY YELLOW REFLECTIVE MARKER



**TYPE H**  
ONE-WAY YELLOW REFLECTIVE MARKER

MULTI - LANE



Pavement Symbols, Words, Arrows, and Legends for Bike Route as Required on Plans.

## GENERAL NOTES

- Pavement marking and striping shall conform to the latest "Manual on Uniform Traffic Control Devices for Streets and Highways," and as amended.
- Layout and installation of pavement marking and striping shall be done by the Contractor. The Contractor shall check the layouts with the Engineer prior to performing work.
- Edge lines shall not be continued through intersections and shall not be broken for driveways unless otherwise shown or directed.

## LEGEND

- Type A
- Type C
- Type D
- Type H
- Type J

APPROVAL RECOMMENDED:

*Eiichi Tanaka* 7/21/78  
TRAFFIC ENGINEER DATE

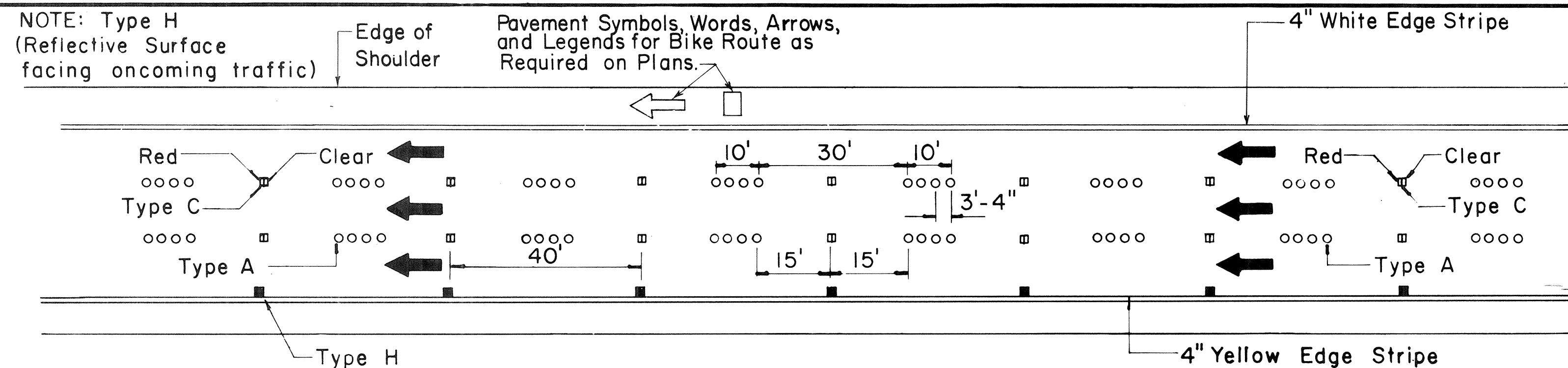
APPROVED:

*Herbert D. Zakehian* 7/24/78  
ASSISTANT CHIEF, ENGINEERING DATE

No.	REVISION	APPROVED BY	DATE
1	Supersedes DT 300 approved 11/18/71.	H.T.	7/24/78
2	Delete Type A Markers from Bike Route Delineation.	H.T.	10/15/79
3	Added General Note 3. Revised left edge stripe.	H.T.	9-28-83
4	Revised Channelizing Lines or Solid Lane Lines.	H.T.	7/18/85

STATE OF HAWAII DEPARTMENT OF TRANSPORTATION HIGHWAYS DIVISION	
STANDARD DETAILS RAISED PAVEMENT MARKERS AND STRIPING	
Not to Scale	July 1978
SHEET No. 13	OF SHEETS DT 300

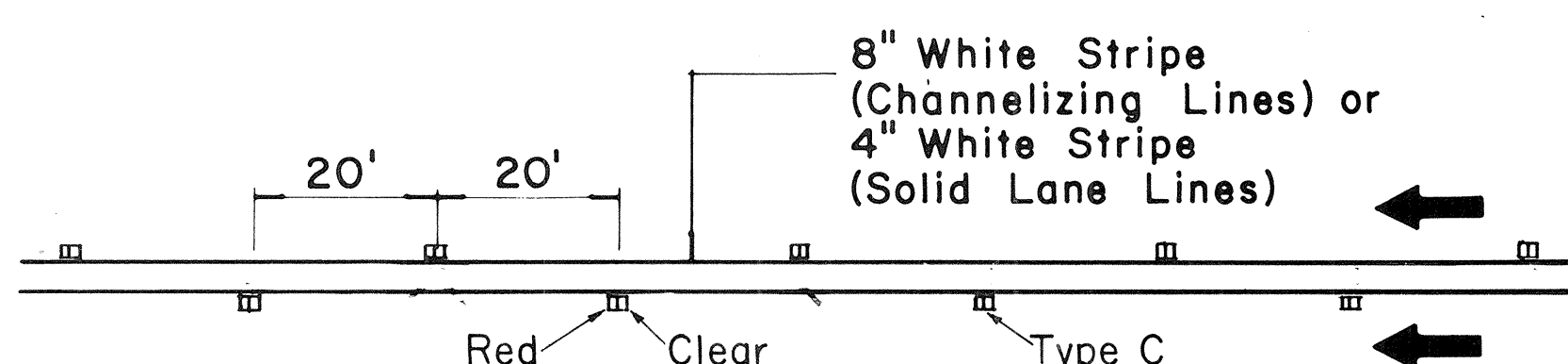
DIVIDED HIGHWAY AND FREEWAY



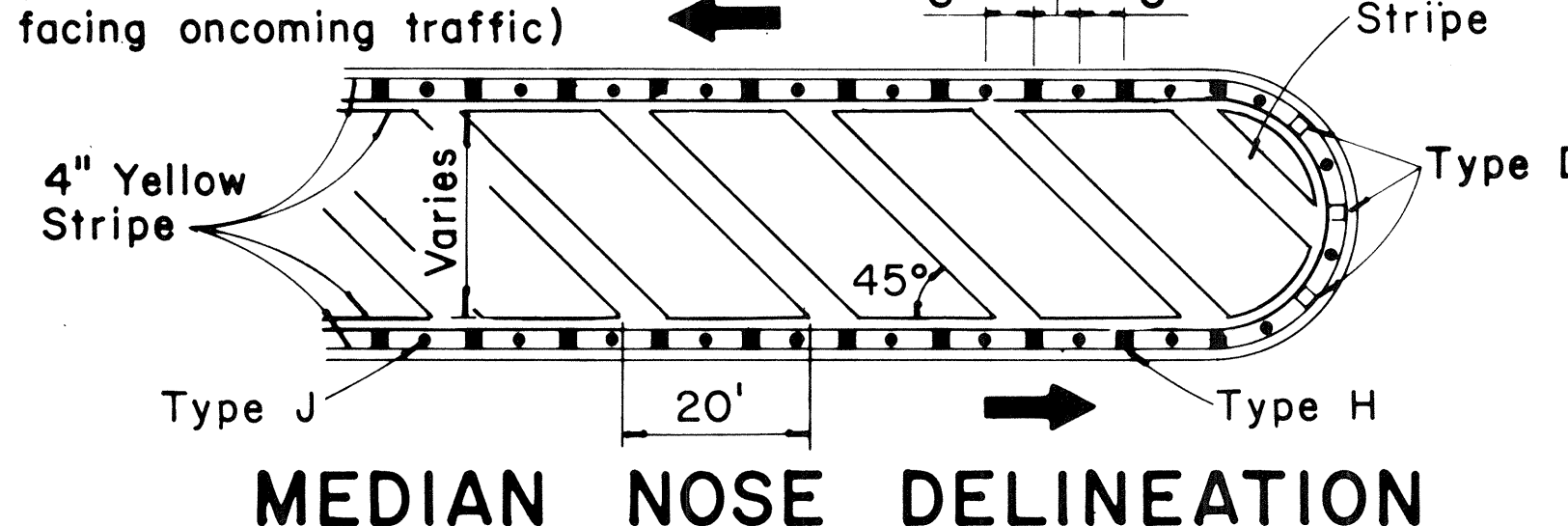
NOTE: Type H (Reflective Surface facing oncoming traffic)

Pavement Symbols, Words, Arrows, and Legends for Bike Route as Required on Plans.

## CHANNELIZING LINES OR SOLID LANE LINES



NOTE: Type H (Reflective surface facing oncoming traffic)



## MEDIAN NOSE DELINEATION

MISCELLANEOUS

DATE	7/21/78
DESIGNED BY	H.T.
TRACED BY	H.T.
NOTED BY	H.T.
CHECKED BY	H.T.
ORIGINAL PLAN	
NOTE BOOK	
No.	