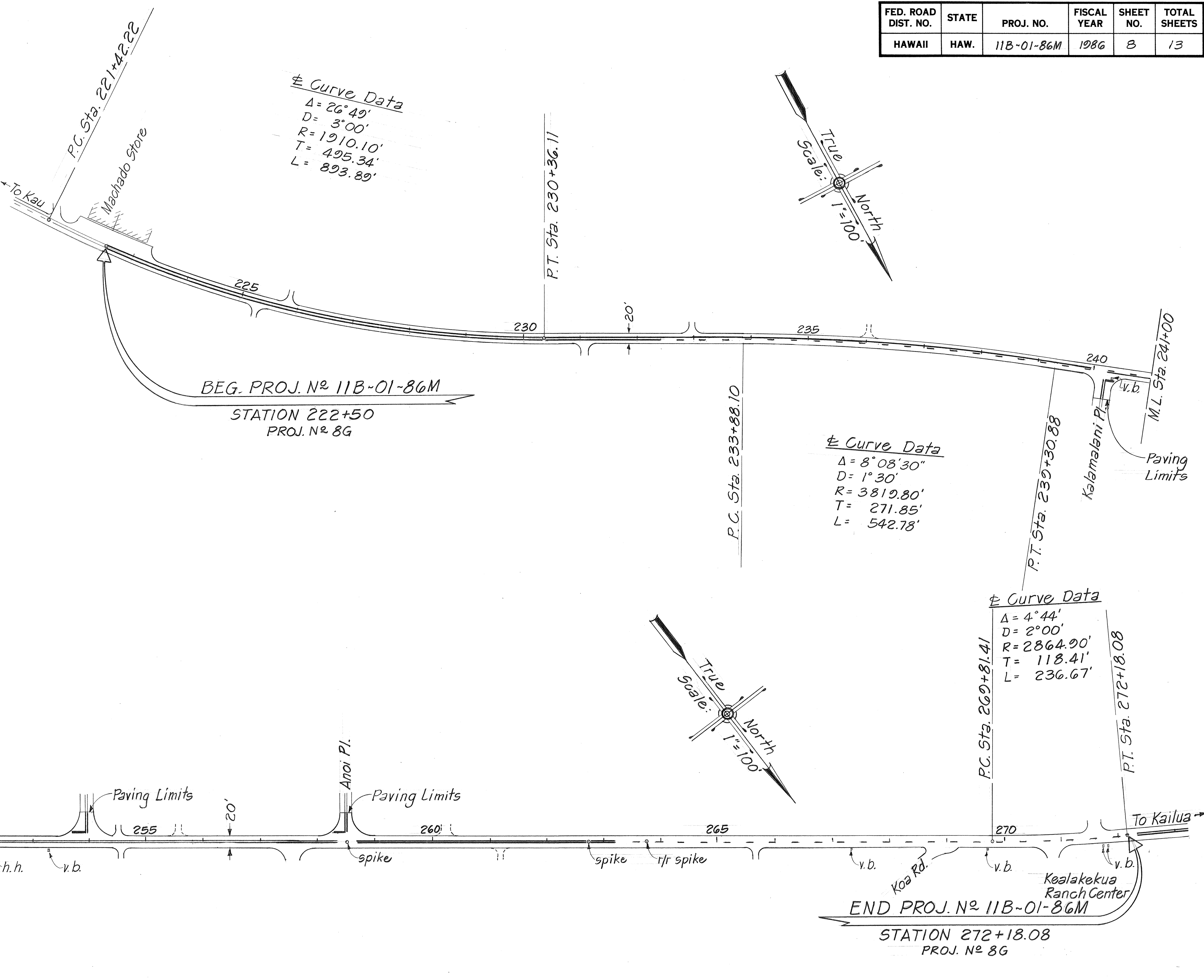
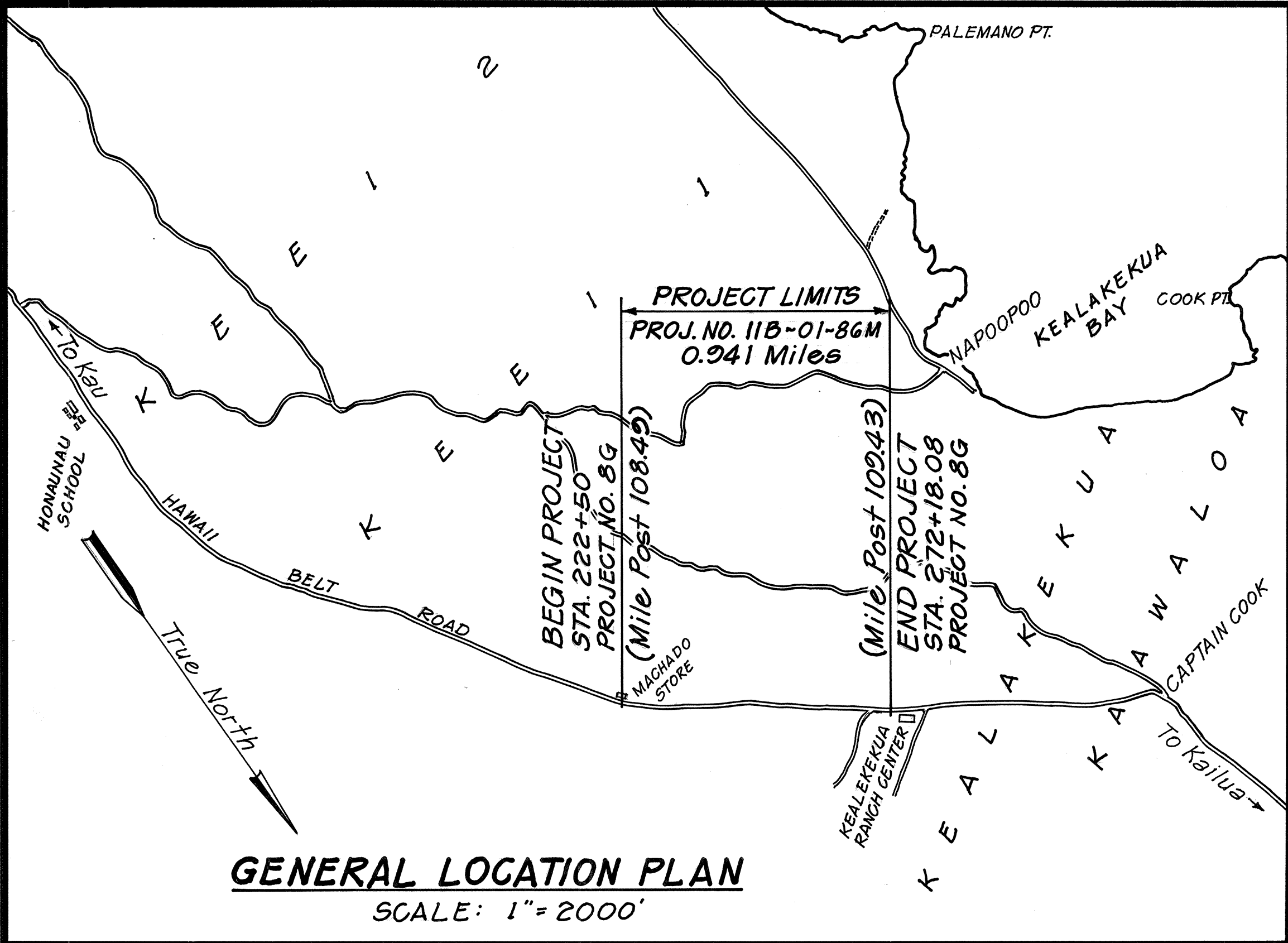


FED. ROAD DIST. NO.	STATE	PROJ. NO.	FISCAL YEAR	SHEET NO.	TOTAL SHEETS
HAWAII	HAW.	11B-01-86M	1986	8	13



ORIGINAL PLAN	SURVEY PLOTTED BY	DATE
NOTE BOOK	DRAWN BY	
	TRACED BY	
	QUANTITIES BY	
	CHECKED BY	

STATE OF HAWAII

DEPARTMENT OF TRANSPORTATION

HIGHWAYS DIVISION

GENERAL LOCATION PLAN

PROJECT & STRIPING LAYOUT

HAWAII BELT ROAD

MACHADO STORE TO KEALAKEKUA RANCH CENTER

PROJECT NO. 11B-01-86M

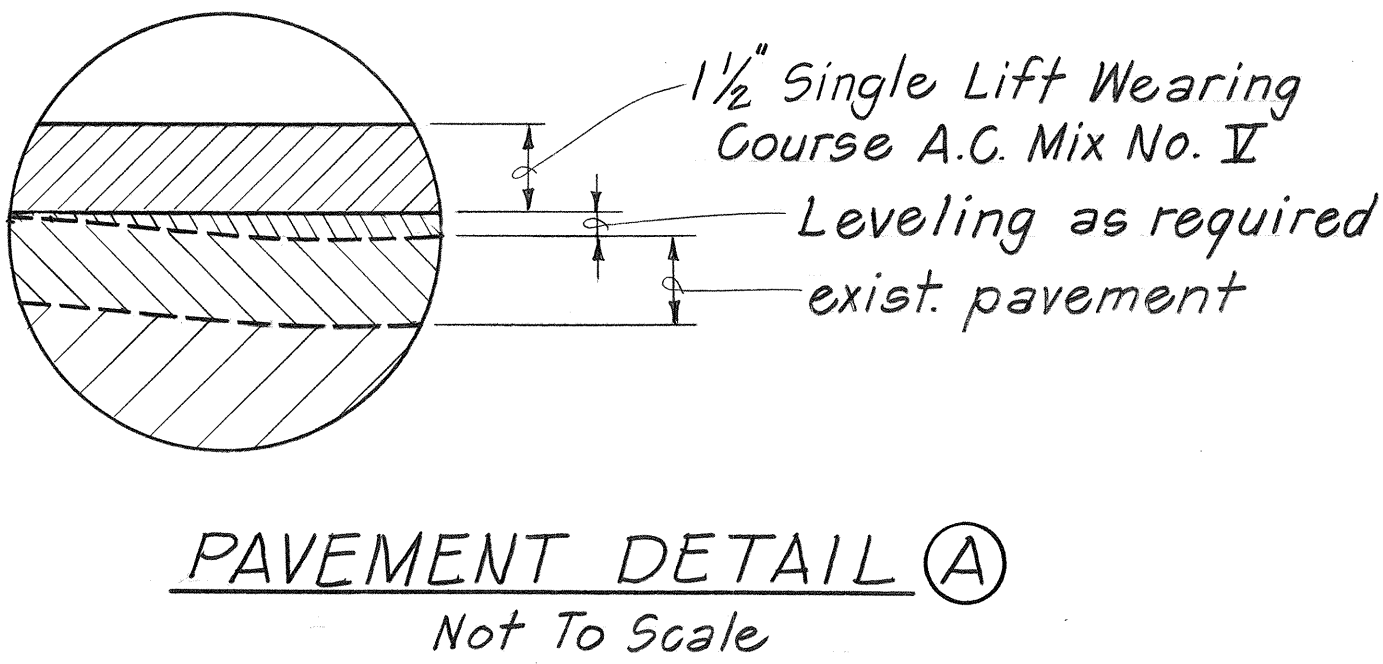
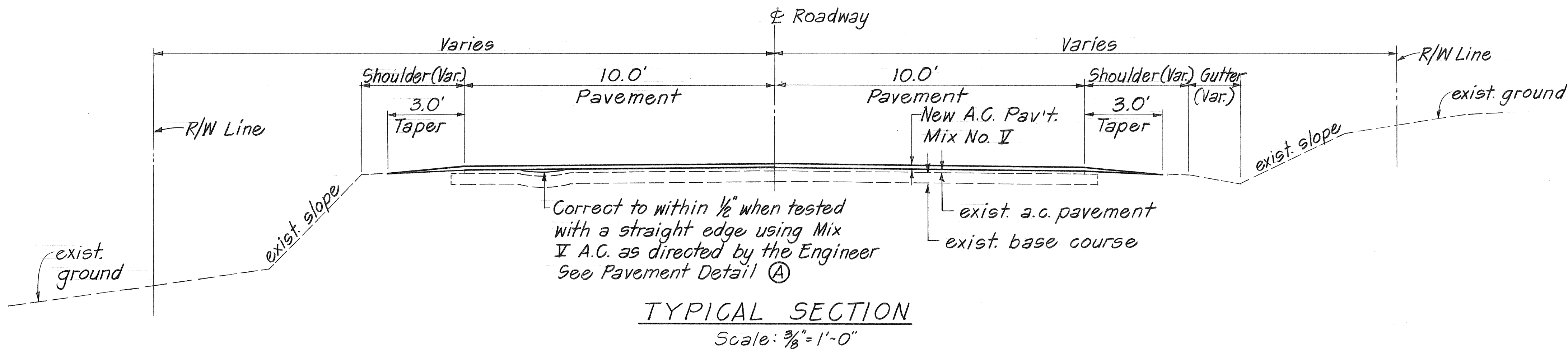
SOUTH KONA, HAWAII

Scale: As Shown

Date: March 1986

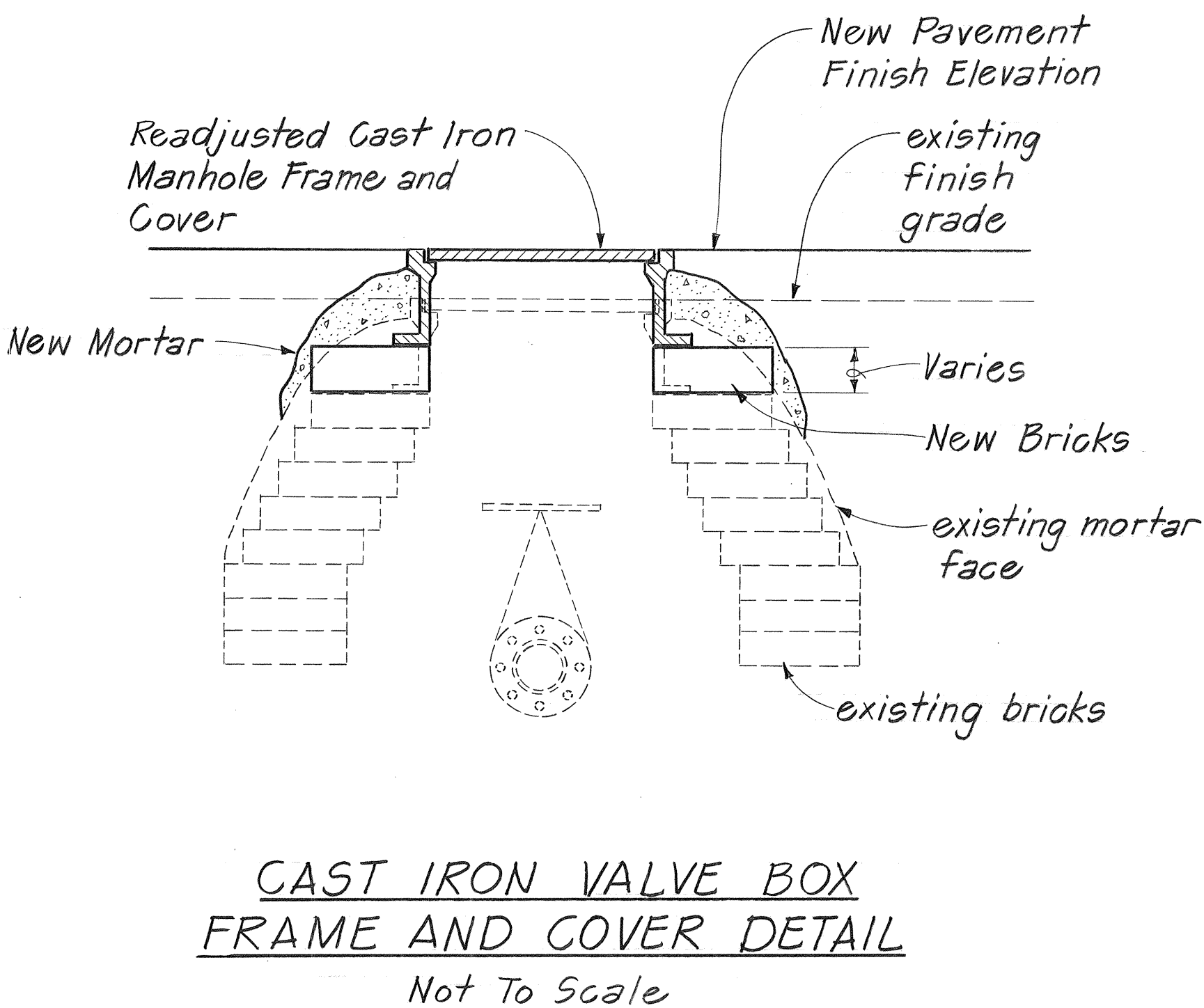
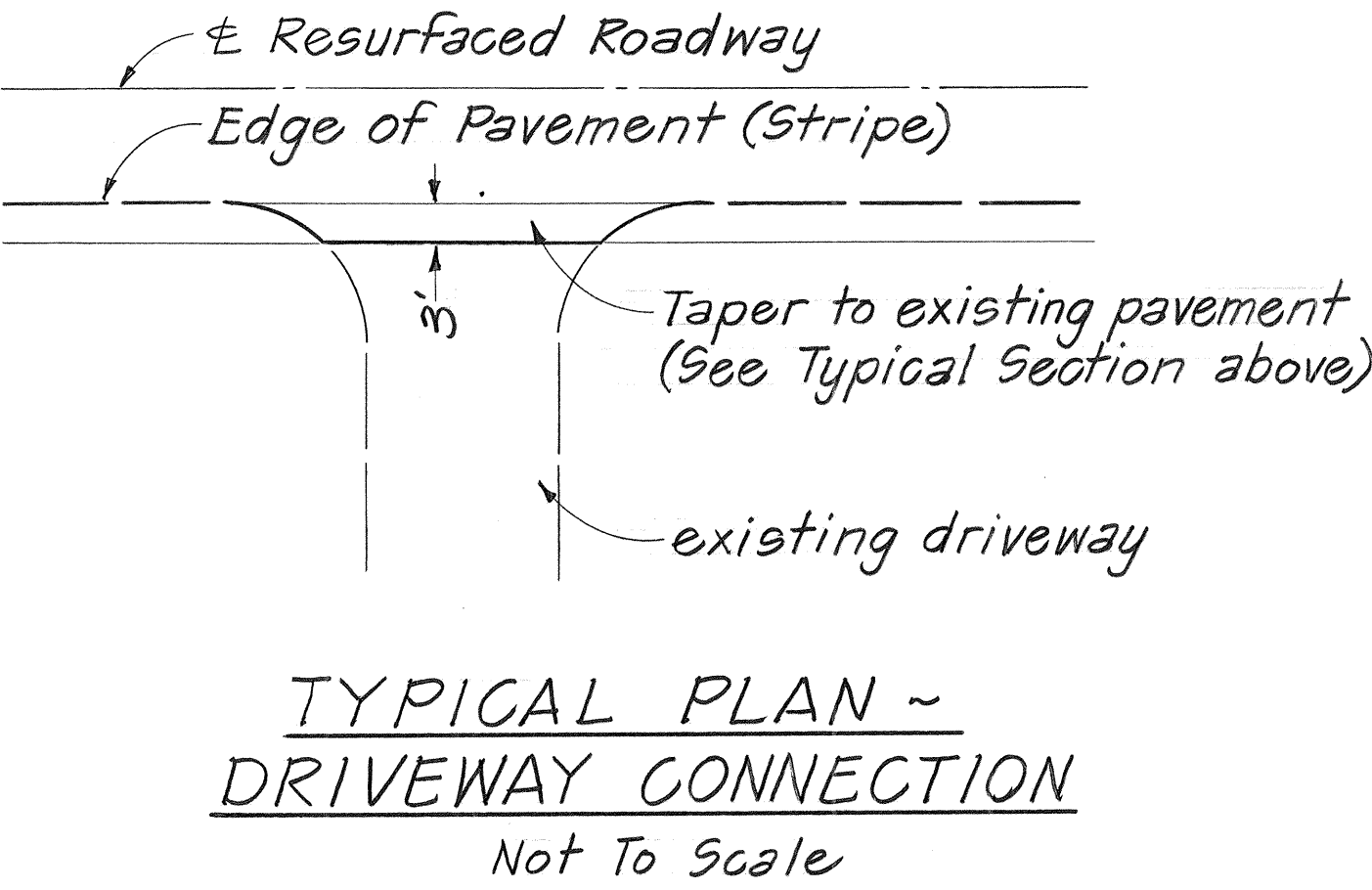
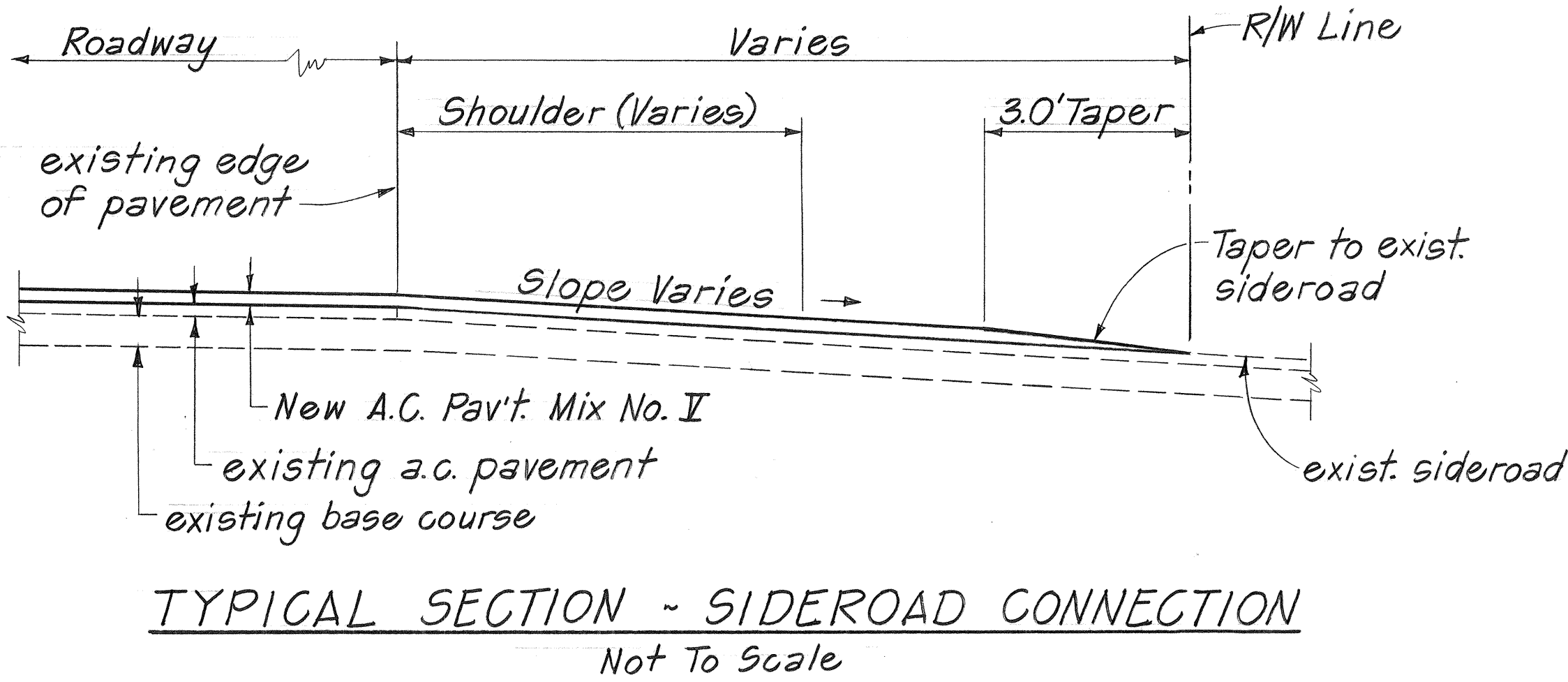
SHEET NO. 1 OF 2 SHEETS

FED. ROAD DIST. NO.	STATE	PROJ. NO.	FISCAL YEAR	SHEET NO.	TOTAL SHEETS
HAWAII	HAW.	11B-01-86M	1986	7	13



GENERAL NOTES

1. The work to be done under this project includes resurfacing the existing pavement, installing pavement markers and adjusting water valve boxes.
2. Existing pavement surface variable. Surface indicated here is not intended to represent any specific location.
3. Construct smooth and easy riding connection at beginning and end of project.
4. All construction signs shall be reflectorized with high intensity reflective sheeting.
5. Pavement areas where striping is to be done by State Forces shall be broomed off by the Contractor.
6. Leveling course shall be considered incidental to Item No. 401.0500, A.C. Mix No. II.



PAVEMENT MARKER SCHEDULE					
STATION			TYPE		
FROM	TO		DL	HL	J
222+50	232+40	No Passing - Both Sides	50		
232+40	239+25	No Passing-L Passing-R	20	20	80
239+25	240+25	Open			
240+25	246+75	Passing-L No Passing-R	18	18	68
246+75	258+35	No Passing - Both Sides	58		
258+35	258+70	Open			
258+70	263+20	No Passing - Both Sides	12		
263+20	272+35	Passing - Both Sides	23		96
272+35	273+25	No Passing - Both Sides	5		
Side Road					
240+20 Rt.		No Passing - Both Sides	2		
254+00 Lt.		No Passing - Both Sides	2		
258+50 Lt.		No Passing - Both Sides	2		
TOTALS			192	38	244

STATE OF HAWAII  
DEPARTMENT OF TRANSPORTATION  
HIGHWAYS DIVISION

TYPICAL SECTIONS & DETAILS

HAWAII BELT ROAD  
MACHADO STORE TO KEALAKEKUA RANCH CENTER  
PROJECT NO. 11B-01-86M  
SOUTH KONA, HAWAII

Scale: As Shown      Date: December 1985

SHEET NO. 2 OF 2 SHEETS

SURVEY PLOTTED BY	DATE
DRAWN BY	
TRACED BY	
CHECKED BY	
NOTED BY	
QUANTITIES BY	
CHECKED BY	