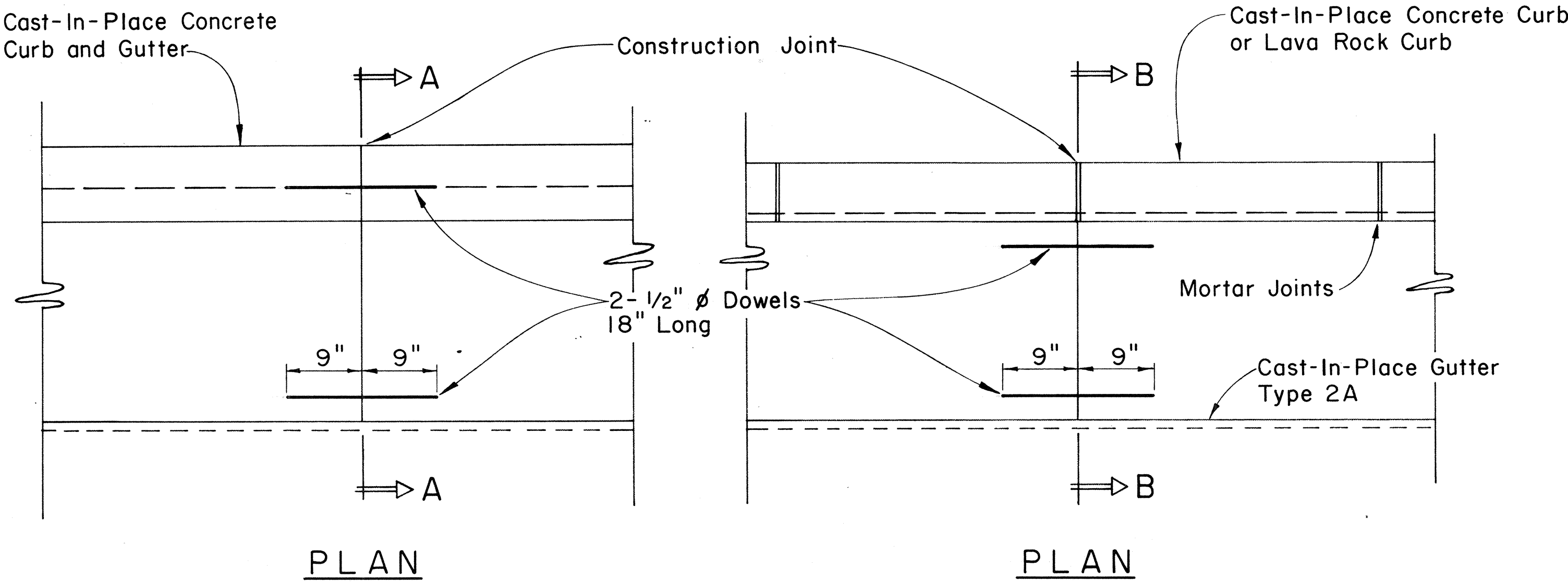
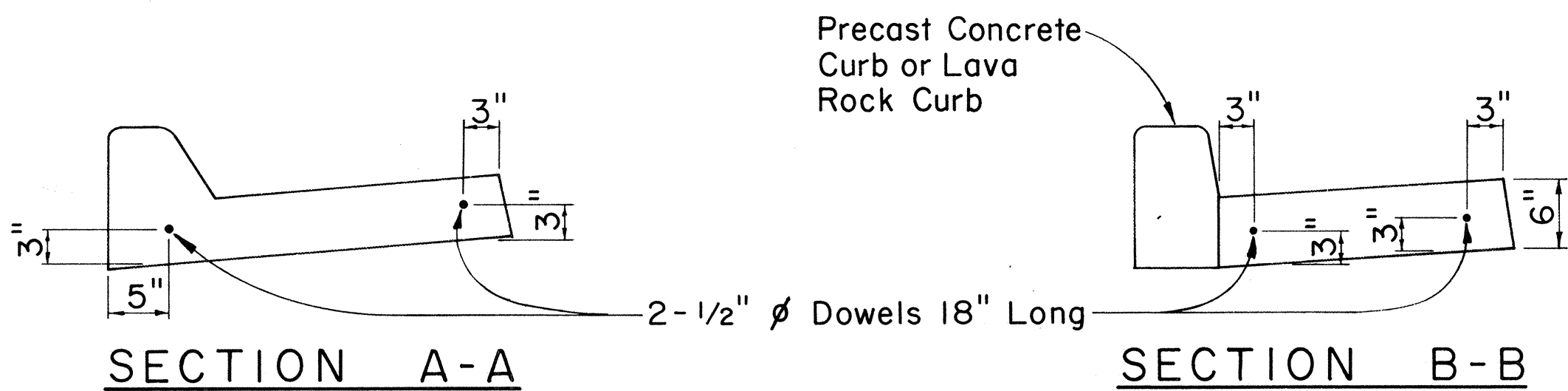
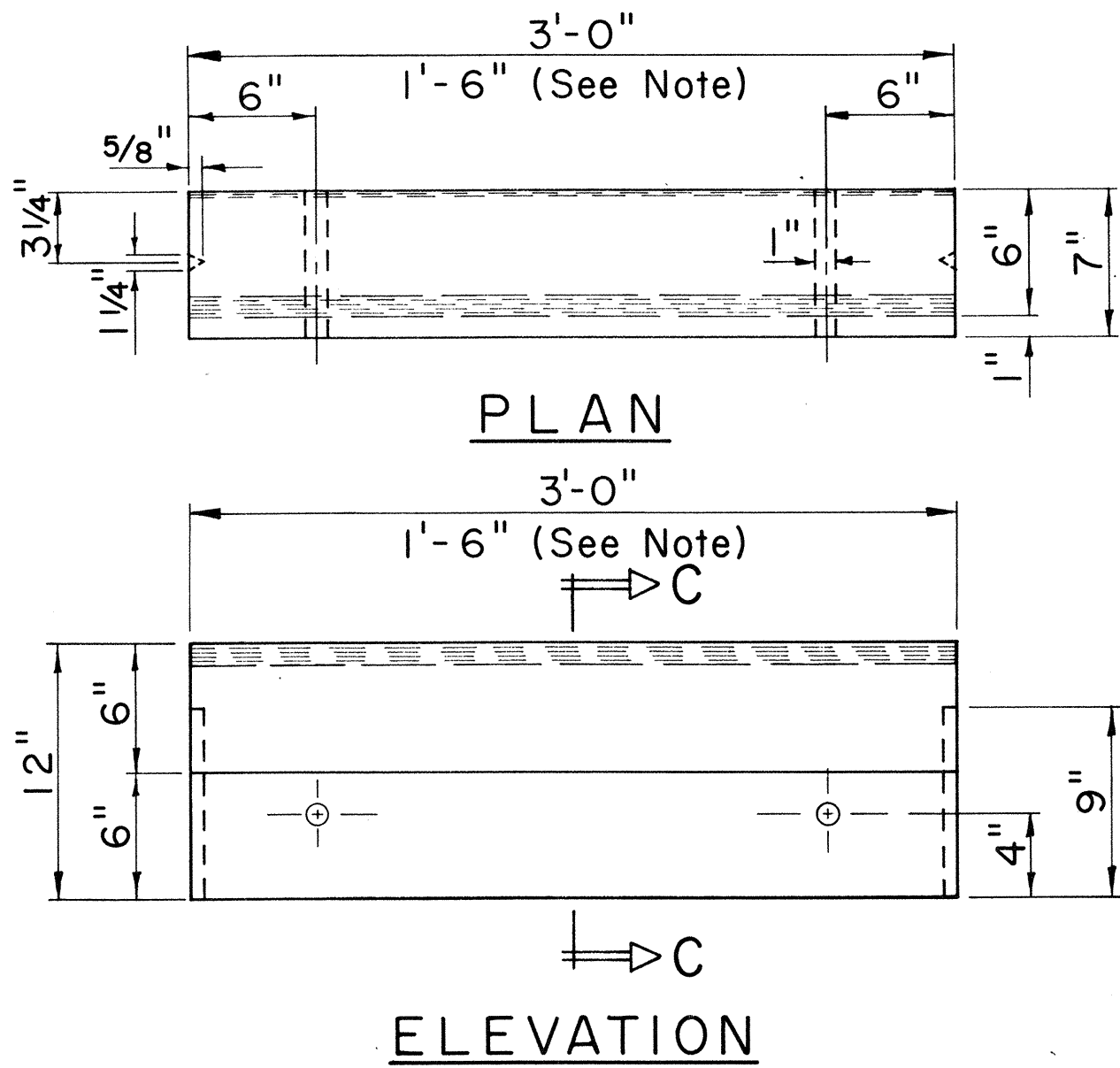


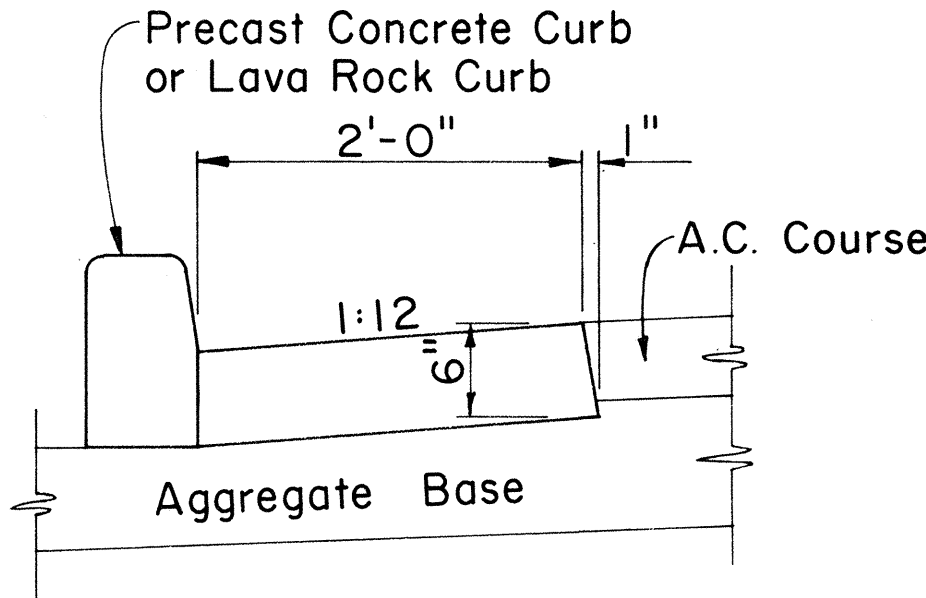
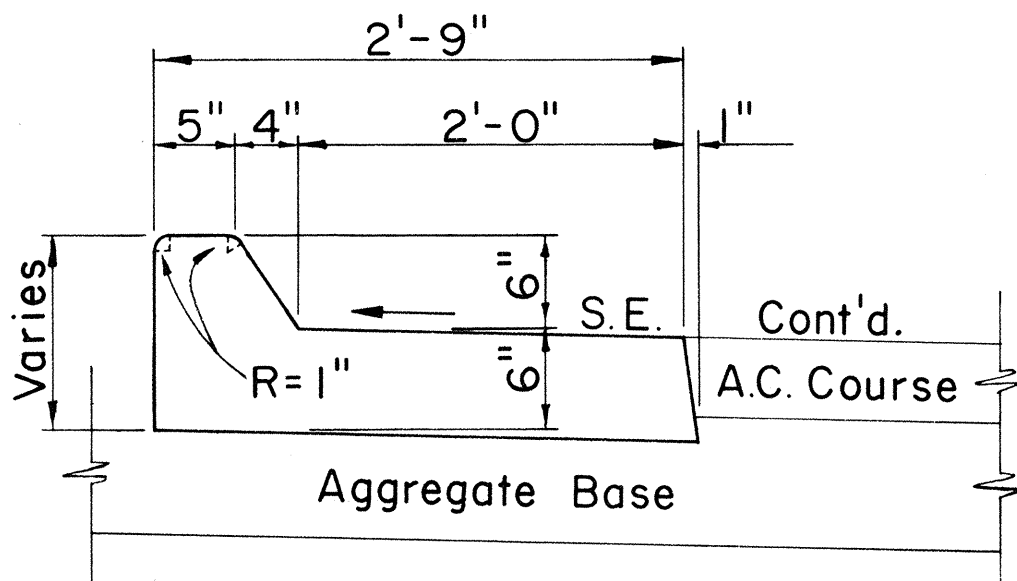
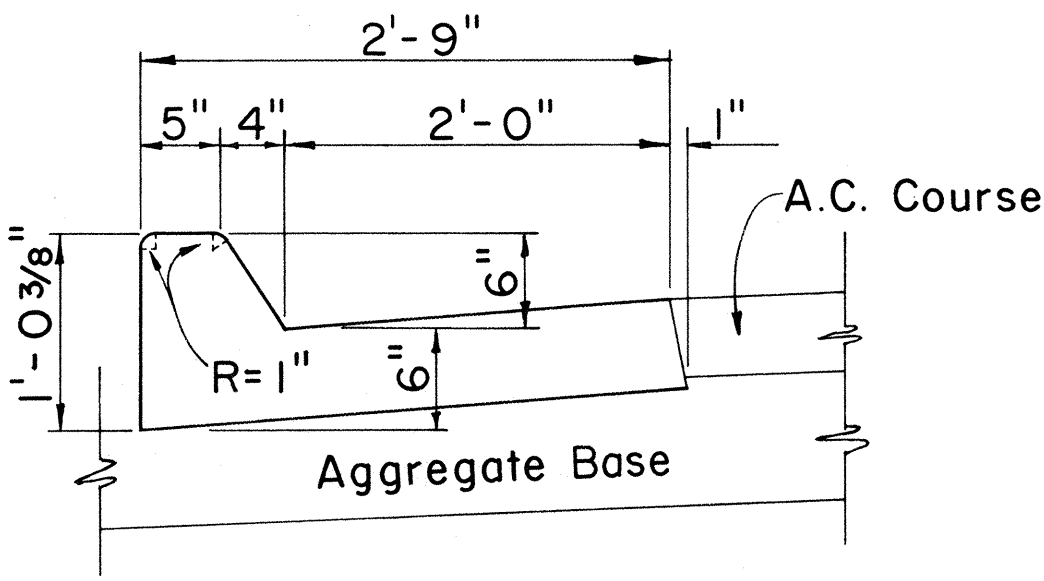
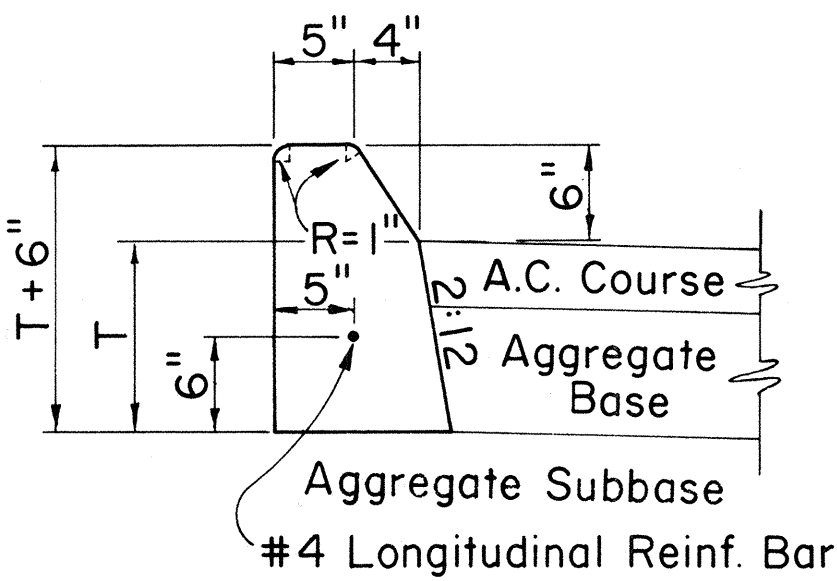
FED. ROAD DIST. NO.	STATE	FED. AID PROJ. NO.	FISCAL YEAR	SHEET NO.	TOTAL SHEETS
HAWAII	HAW.	11M-01-82M, 19H-01-82M, 19D-01-82M, 19L-01-82M	1981	8	15



**CURB, TYPE 6**  
**BITUMINOUS CURB**  
 Scale: 1 1/2" = 1'-0"

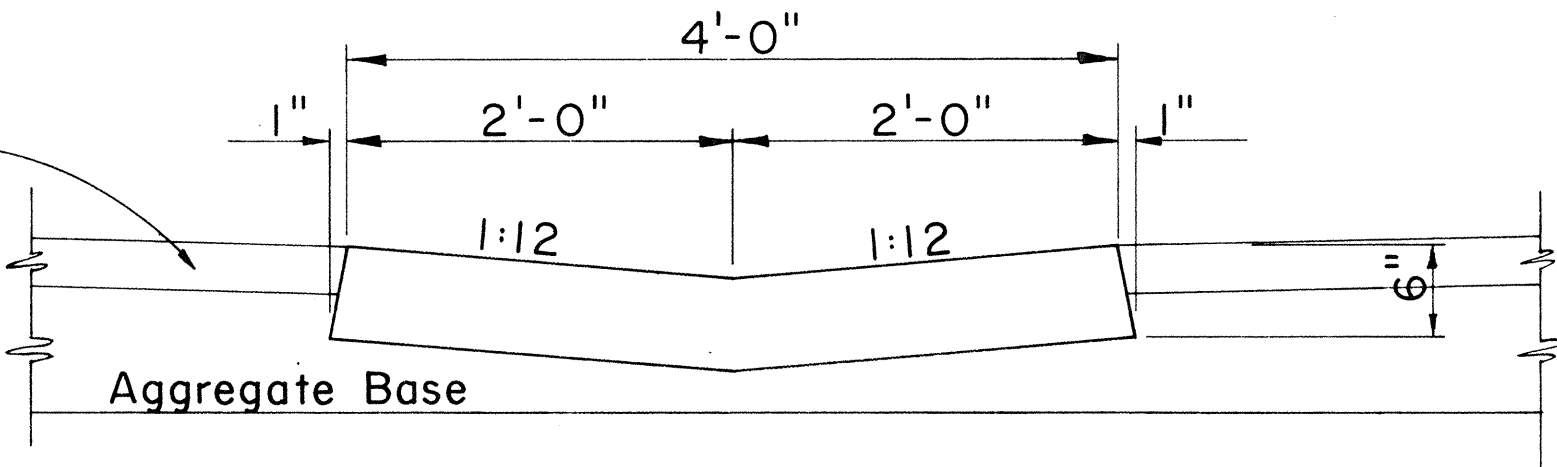
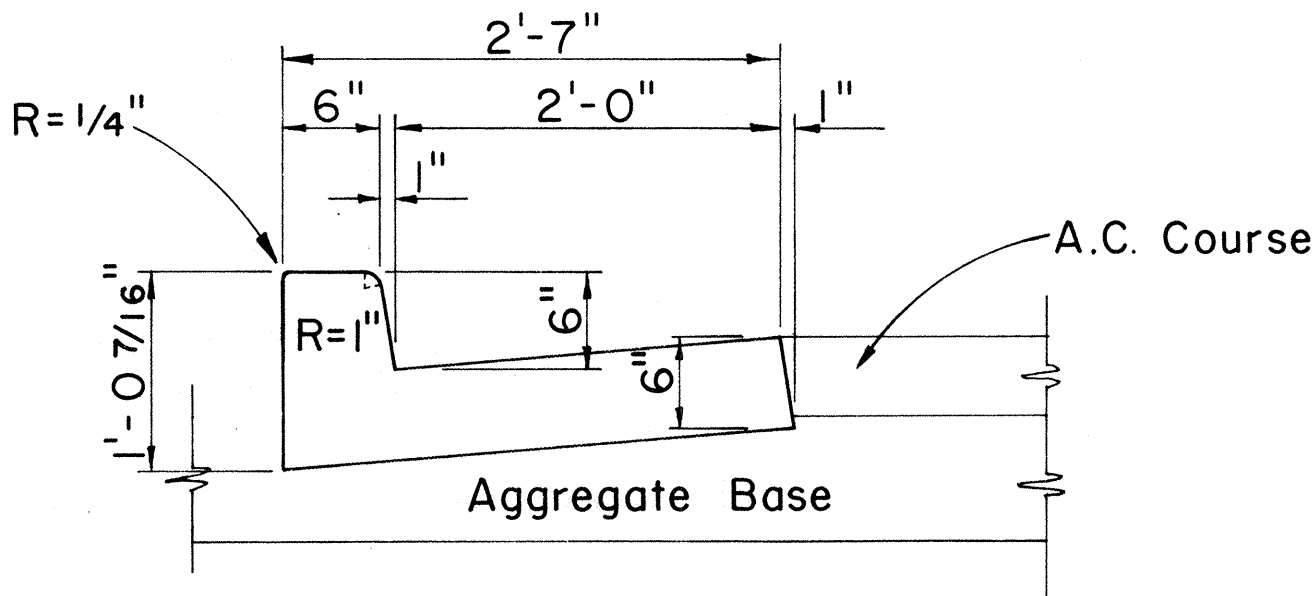
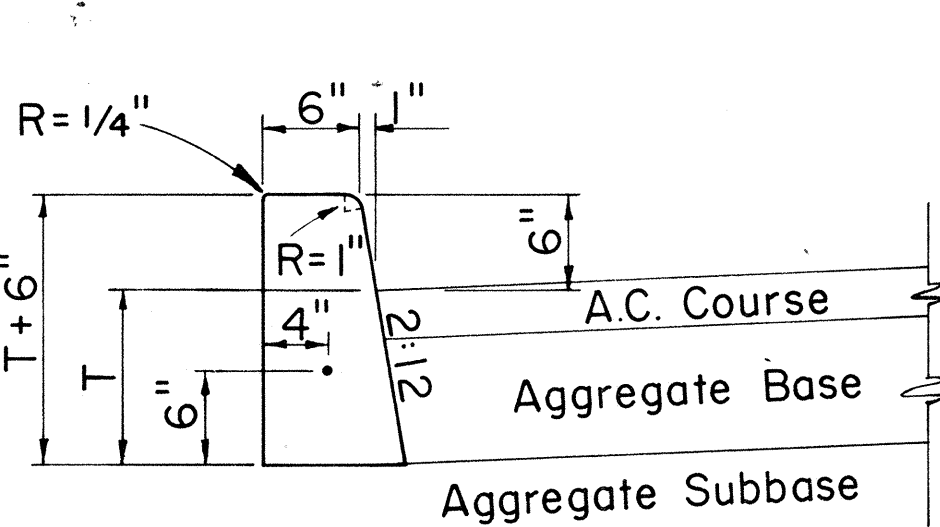


**CAST-IN-PLACE CURB & GUTTER**  
**CAST-IN-PLACE GUTTER**  
**CONSTRUCTION JOINT DETAIL**  
 Scale: 1" = 1'-0"



**SECTION C-C**  
**CURB, TYPE 3D**  
**PRE-CAST CONC. CURB**  
 Scale: 1 1/2" = 1'-0"

NOTE:  
For curb returns use 1'-6" pre-cast concrete curbs.



**CAST-IN-PLACE CONCRETE CURBS AND/OR GUTTERS**  
 Scale: 1" = 1'-0"

APPROVAL RECOMMENDED:  
 HIGHWAY DESIGN ENGINEER 12-4-69 DATE

APPROVED:  
 ASSISTANT CHIEF, ENGINEERING 12-10-59 DATE

NO.	REVISION	APPROVED BY	DATE

STATE OF HAWAII  
 DEPARTMENT OF TRANSPORTATION  
 HIGHWAYS DIVISION  
**STANDARD DETAILS**  
**TYPICAL DETAILS OF CURB**  
**AND/OR GUTTERS**

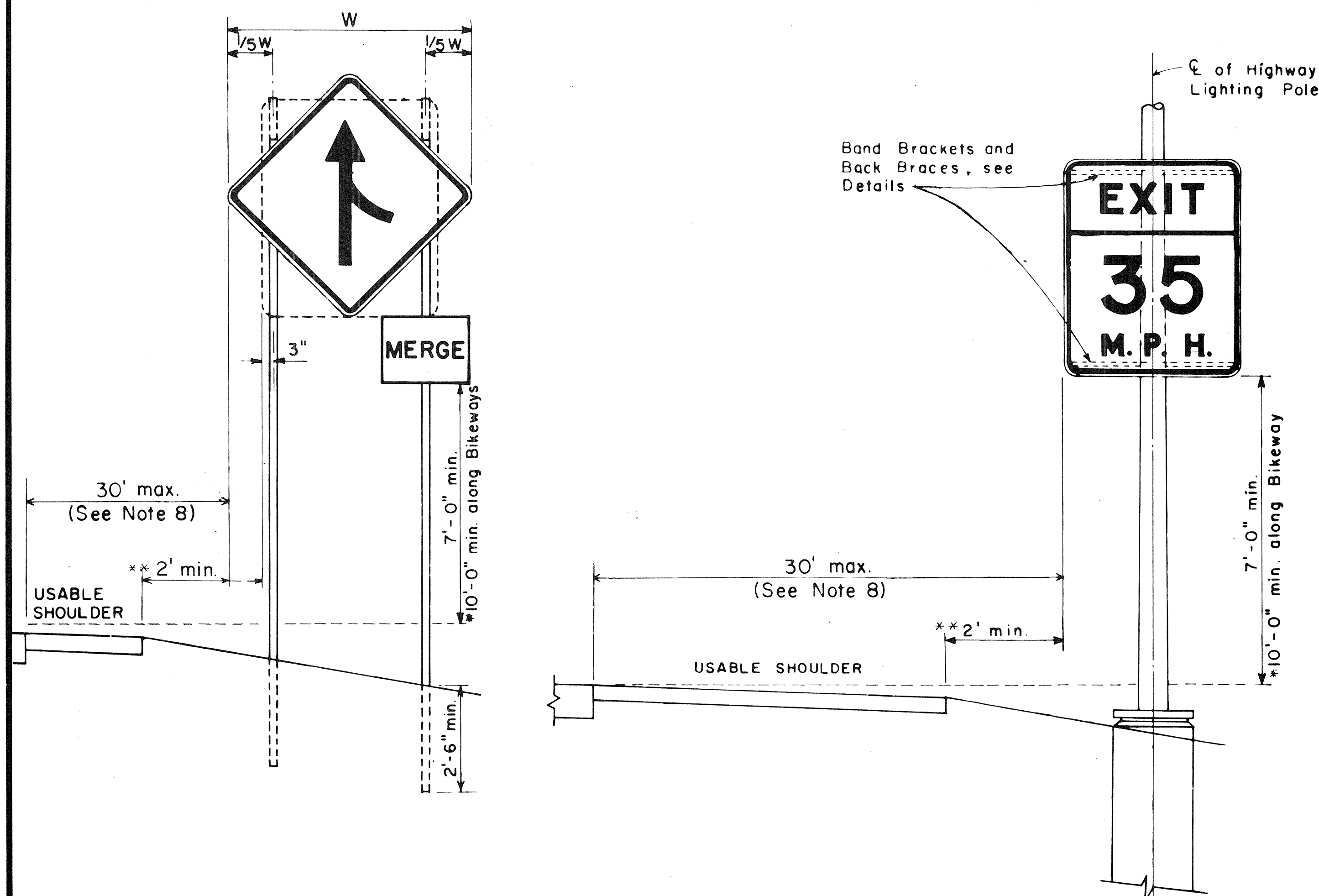
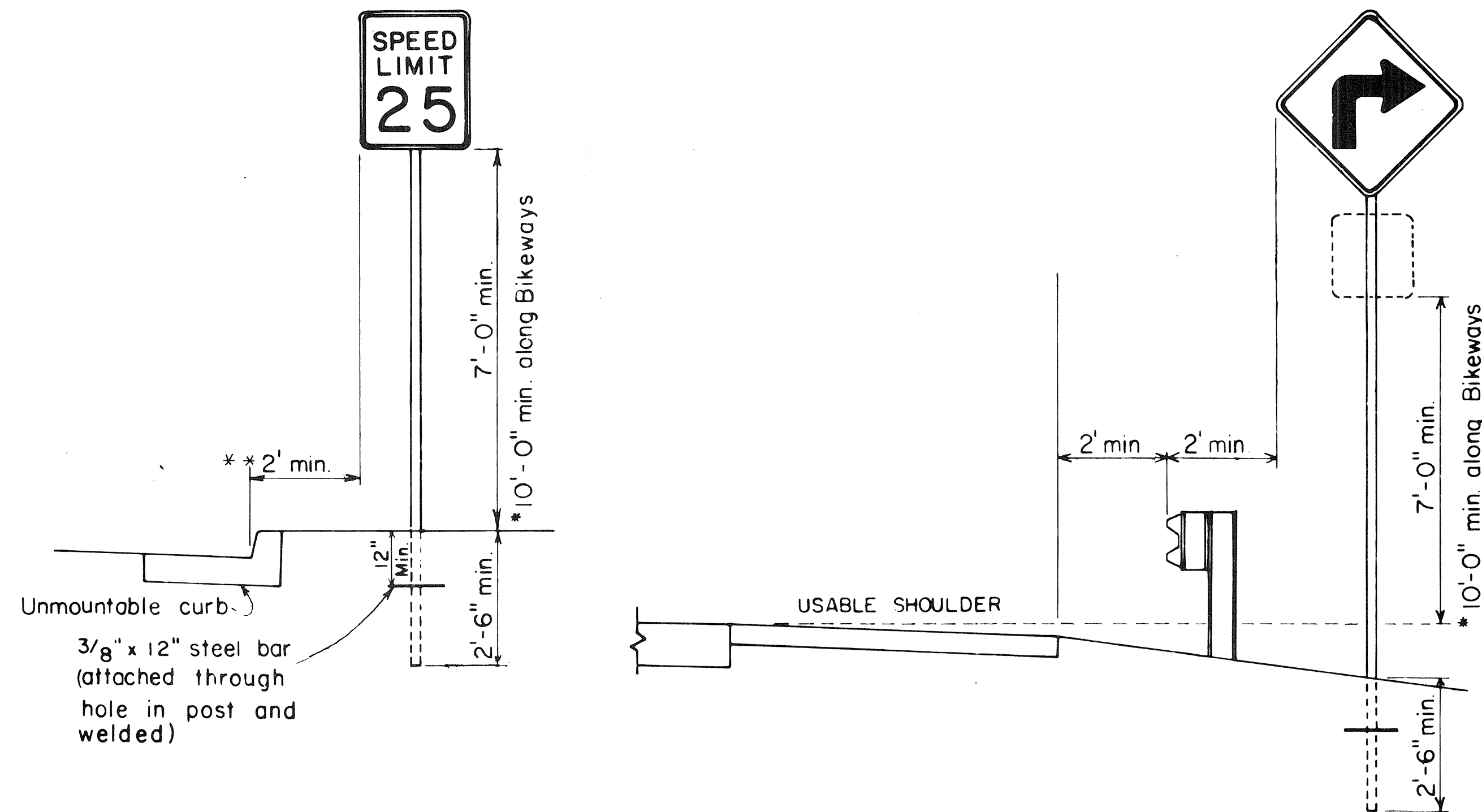
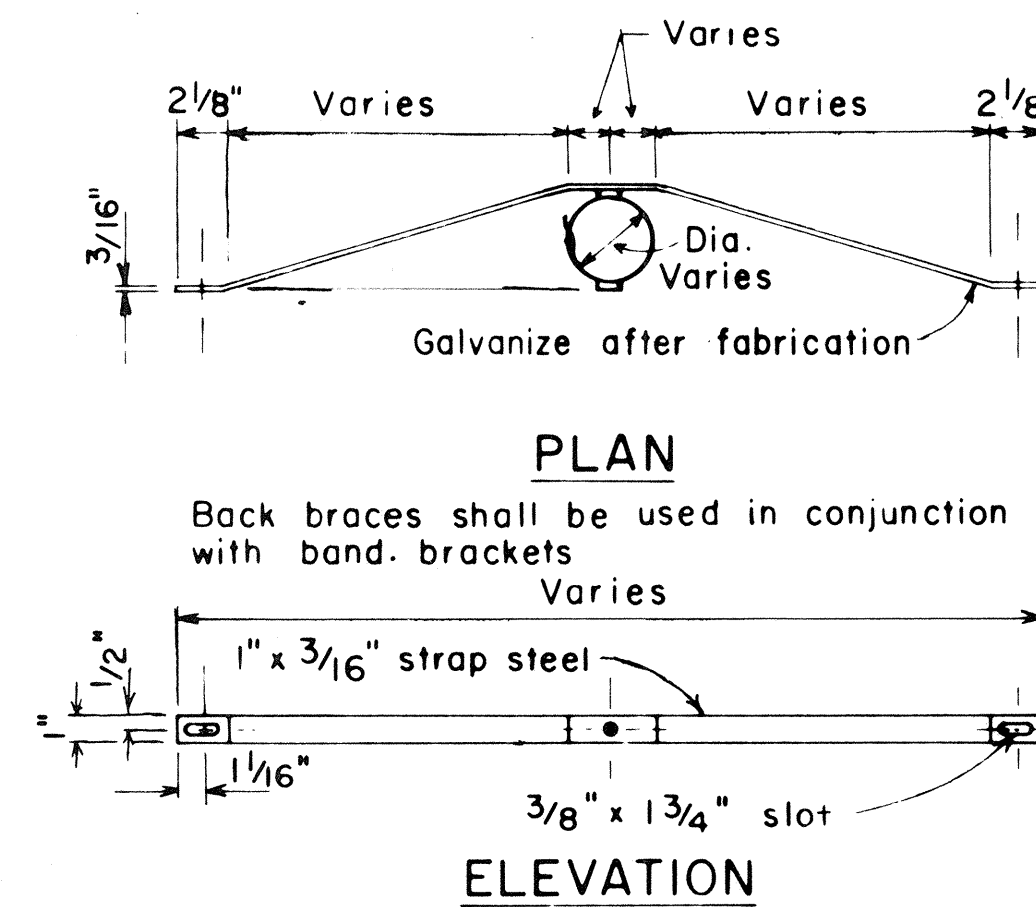
SURVEY PLOTTED BY	DATE
DRAWN BY	
TRACED BY	
CHECKED BY	
NOTE BOOK	
No.	

FED. ROAD DIST. NO.	STATE	FED. AID PROJ. NO.	FISCAL YEAR	SHEET NO.	TOTAL SHEETS
HAWAII	HAW.	11H-01-82M, 12H-01-82M, 13H-01-82M, 14H-01-82M, 15H-01-82M	1981	2	15

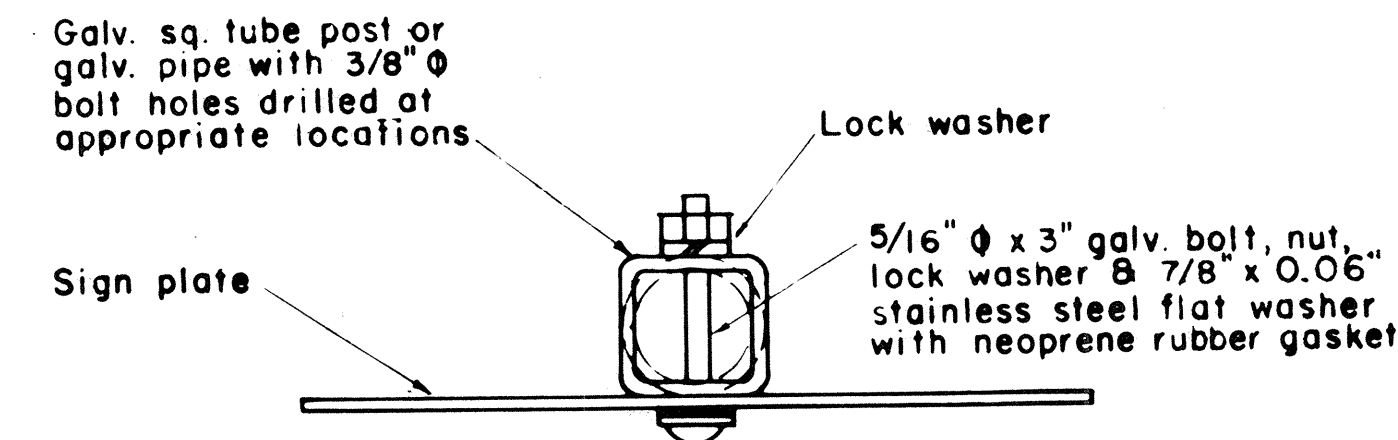
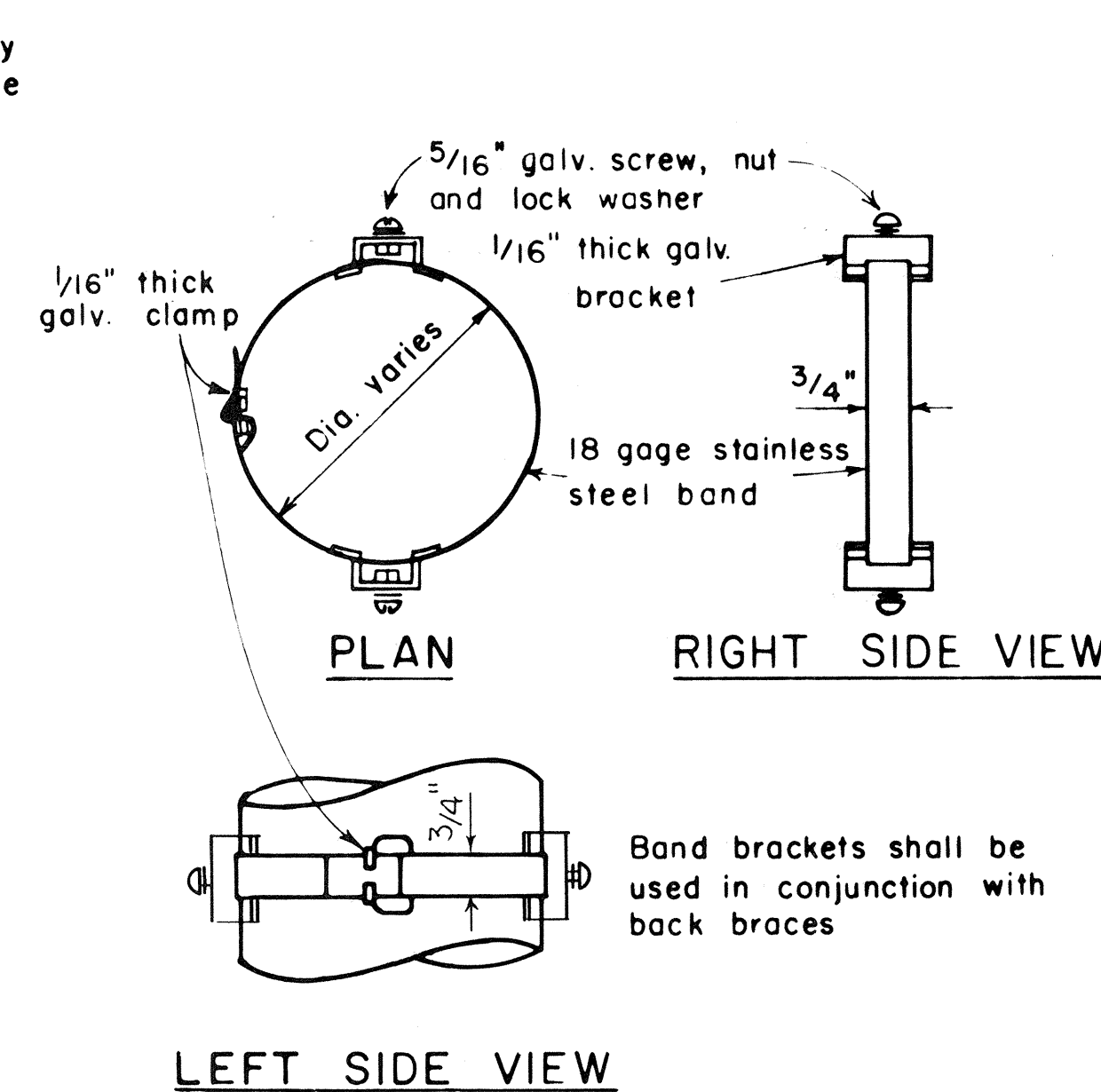
### GENERAL NOTES

- Signs shall be placed in conformance with positions shown and described in the "Manual on Uniform Traffic Control Devices for Streets and Highways", 1978, Part II, Section 2A-21, as amended, and as supplemented herein.
- Signs 48" and wider or larger than 10 sq. ft. in area shall be mounted on two sign posts except as noted below.
- Signs 48" and wider or larger than 10 sq. ft. in area may be mounted on other than two sign posts (i.e. on highway lighting poles)
  - Signs larger than 10 sq. ft. and less than 28 sq. ft. in area shall be mounted with a minimum of two sets of band brackets and back braces.
  - Signs larger than 28 sq. ft. in area shall be mounted with a minimum of three sets of band brackets and back braces.
- All parking restriction signs with arrows shall be mounted 45° to the line of traffic flow.
- Sign posts shall extend 3½" above each sign, where required, for attachment of City and County street name signs.
- (R) or (L) indicates right or left and shall be shown on the plans.
- See plans for special details.
- The minimum lateral distances shown are guidelines and shall be exceeded whenever possible. The Contractor shall place signs at the maximum practical lateral distance from the edge of the traveled way up to 30 feet and shall utilize protected locations whenever possible. Final locations of all signs shall be approved by the Engineer.
- Signs in medians shall be placed at midpoint of median up to a maximum distance of 30 feet from the edge of traveled way. When appropriate, signs for opposing directions shall be placed back to back.

### BACK BRACE DETAILS FOR BALANCED SIGN INSTALLATION



### HEIGHT AND LATERAL LOCATION OF SIGNS TYPICAL INSTALLATION



### GALVANIZED SQUARE TUBE POST (OR GALVANIZED PIPE)

### BAND BRACKET

### TYPICAL MOUNTING DETAILS

NOT TO SCALE

NO.	REVISION	APPROVED BY	DATE
1	Supercedes Sht. DT-100 approved 12/30/69	H.T.	11/15/11
2	Revised depth of signpost	H.T.	5/8/19
3	Added Notes No. 8 & No. 9	H.T.	5/18/19
4	Revised Gen. Note #4 & Mounting Details	H.T.	4/23/80
5	Revised General Notes, Lateral Sign Locations and Mounting Details	H.T.	5/15/81

APPROVAL RECOMMENDED:  
*Erick Tanaka* 11/10/77  
 TRAFFIC ENGINEER DATE

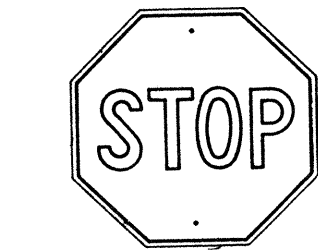
APPROVED:  
*Harbert S. Gafarishvili* 11/15/77  
 ASSISTANT CHIEF, ENGINEERING DATE

STATE OF HAWAII DEPARTMENT OF TRANSPORTATION HIGHWAYS DIVISION
<b>STANDARD DETAILS</b>
MISCELLANEOUS SIGN DETAILS
Not to scale June, 1977

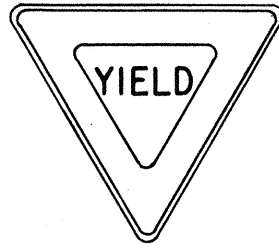
SHEET NO. 2 OF 3 SHEETS DT 100



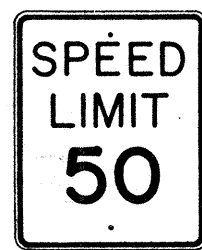
FED. ROAD DIST. NO.	STATE	FED. AID PROJ. NO.	FISCAL YEAR	SHEET NO.	TOTAL SHEETS
HAWAII	HAW.	11M-01-82M, 19H-01-82M, 19D-01-82M, 19L-01-82M	1981	10	15



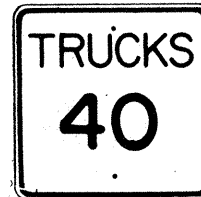
R1-1 30"x 30"  
R1-1-A 36"x 36"  
4-WAY  
R1-3 12"x 6"  
R1-3-A 18"x 9"



R1-2 36"x 36"x 36"  
R1-2-A 48"x 48"x 48"



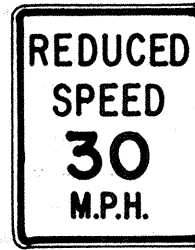
R2-1(50) 24"x 30"  
R2-1(50)-A 48"x 60"



R2-2(40) 24"x 24"  
R2-2(40)-A 48"x 48"



R2-4a(50/40) 24"x 48"  
R2-4a(50/40)-A 48"x 96"



R2-5b(30) 24"x 30"  
R2-5b(30)-A 48"x 60"



R3-1 24"x 24"  
24"x 18"  
R3-1-A 48"x 48"  
48"x 36"



R3-2 24"x 24"  
24"x 18"  
R3-2-A 48"x 48"  
48"x 36"



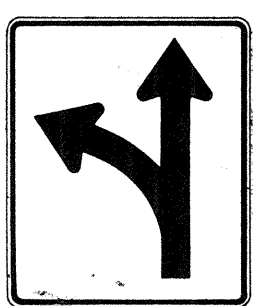
R3-3 24"x 24"  
R3-3-A 48"x 48"



R3-4 24"x 24"  
24"x 18"  
R3-4-A 48"x 48"  
48"x 36"



R3-5(L) 30"x 36"  
R3-5(L)-A 48"x 60"



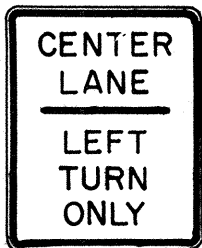
R3-6(L) 30"x 36"  
R3-6(L)-A 48"x 60"



R3-7(R) 30"x 30"  
R3-7(R)-A 48"x 48"



R3-8(L) 30"x 30"  
R3-8(L)-A 36"x 36"  
R3-8(L)-B 48"x 48"



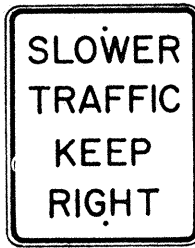
R3-9 24"x 30"



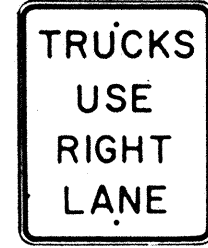
R4-1 24"x 30"



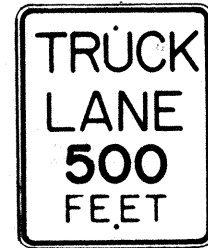
R4-2 24"x 30"



R4-3 24"x 30"  
R4-3-A 48"x 60"



R4-5 24"x 30"



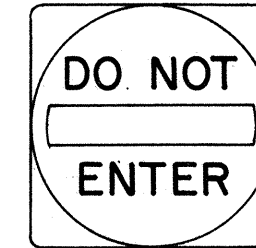
R4-6(500) 24"x 30"



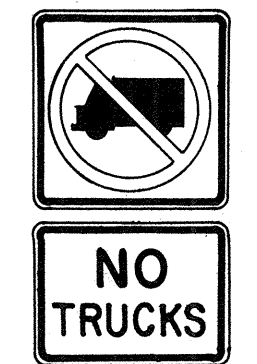
R4-7 24"x 30"  
24"x 18"



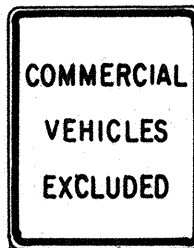
R4-8 24"x 30"  
24"x 18"



R5-1 30"x 30"  
R5-1-A 48"x 48"



R5-2 24"x 24"  
24"x 18"



R5-4 24"x 30"



R5-6 24"x 24"  
24"x 18"



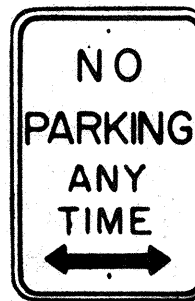
R5-9 36"x 24"



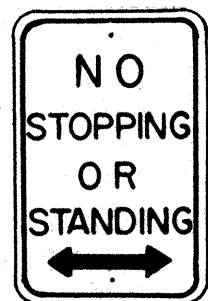
R6-1 (R) 36"x 12"



R6-2(R) 18"x 24"



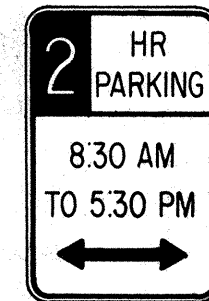
R7-1 12"x 18"  
R7-1-A 24"x 30"



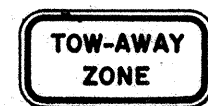
R7-4 12"x 18"  
R7-4-A 24"x 30"



R7-10 12"x 18"



R7-108 12"x 18"



R7-201 12"x 6"  
R7-201-A 24"x 12"



R8-1 24"x 30"



R8-2 24"x 30"



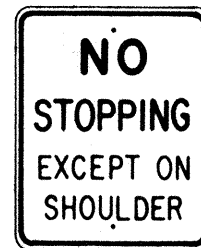
R8-3 24"x 30"



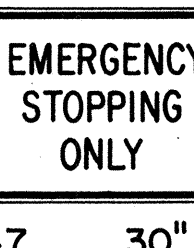
R8-4 30"x 24"  
R8-4-A 48"x 36"



R8-5 24"x 30"



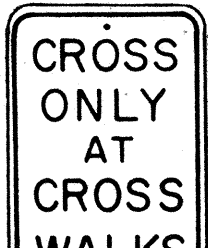
R8-6 24"x 30"



R8-7 30"x 24"  
R8-7-A 48"x 36"



R9-1 18"x 24"



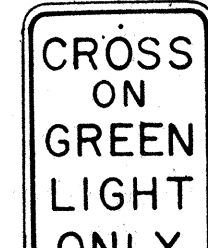
R9-2 12"x 18"



R9-3 12"x 18"



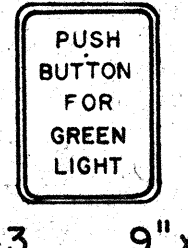
R9-4 18"x 24"



R10-1 12"x 18"



R10-2 12"x 18"



R10-3 9"x 12"



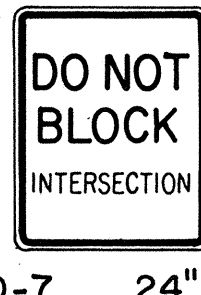
R10-4 9"x 12"



R10-5 24"x 30"



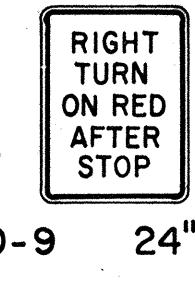
R10-6 24"x 36"



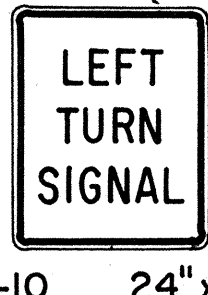
R10-7 24"x 30"



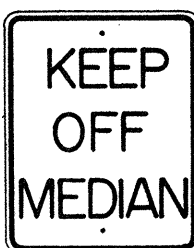
R10-8 24"x 30"



R10-9 24"x 30"



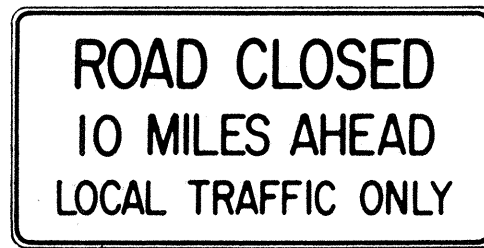
R10-10 24"x 30"



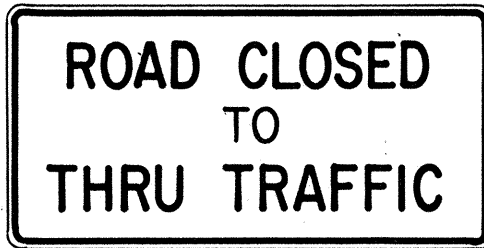
R11-1 24"x 30"



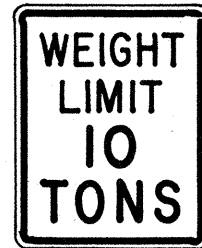
R11-2 48"x 30"



R11-3(10) 60"x 30"



R11-4 60"x 30"



R12-1(10) 24"x 30"

## GENERAL NOTES

- Sign details shall conform to the FHWA publications "Manual on Uniform Traffic Control Devices for Streets and Highways," 1971, and "Standard Highway Signs," 1972, and as amended.
- All regulatory signs shall be reflectorized unless otherwise specified.
- All regulatory signs shall have 3/8" bolt holes drilled at appropriate locations.
- Numerals in ( ) indicates numerals to be inserted for sign message. (R) or (L) indicates right or left.
- All signs shall be erected without educational plaques unless called for in the plans.

APPROVAL RECOMMENDED:  
TRAFFIC ENGINEER

3/11/72  
DATE

APPROVED:  
ASSISTANT CHIEF, ENGINEERING

3-20-72  
DATE

NO.	REVISION	APPROVED BY	DATE
1	Supersedes Sht. DT 101 Approved 12-30-69	H.T.	3/20/72
2	Revised General Note 1.	H.T.	10/14/74
3	Added General Note 5	H.T.	6/9/79

STATE OF HAWAII  
DEPARTMENT OF TRANSPORTATION  
HIGHWAYS DIVISION

## STANDARD DETAILS REGULATORY SIGNS

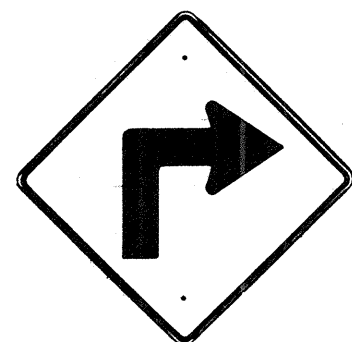
NOT TO SCALE

SHEET No. 3 OF 8 SHEETS DT 101

DESIGNED BY	DATE
CHECKED BY	
IN CHARGE BY	
NOTED BY	
ORIGINAL PLAN	
NOTE BOOK	
NO.	



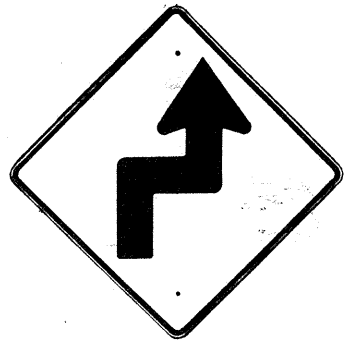
FED. ROAD DIST. NO.	STATE	PROJ. NO.	FISCAL YEAR	SHEET NO.	TOTAL SHEETS
HAWAII *	HAW.	11M-01-82M, 19H-01-82M, 18D-01-82M, 19L-01-82M.	1981	11	15



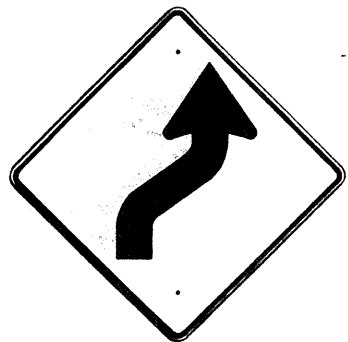
W1-1(R) 30"x30"  
W1-1(R)-A 48"x48"



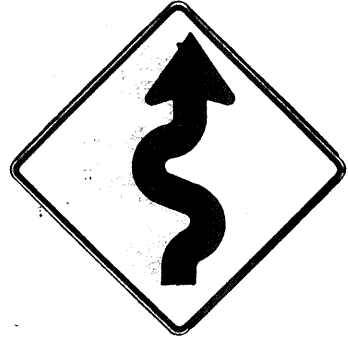
W1-2(R) 30"x30"  
W1-2(R)-A 48"x48"



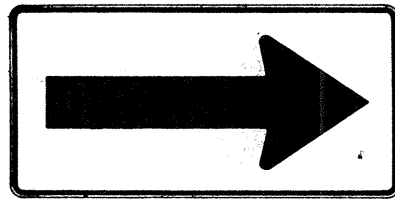
W1-3(R) 30"x30"  
W1-3(R)-A 48"x48"



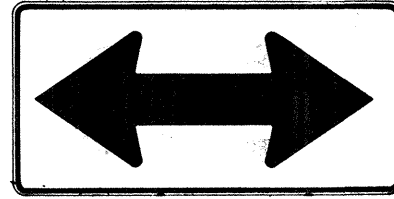
W1-4(R) 30"x30"  
W1-4(R)-A 48"x48"



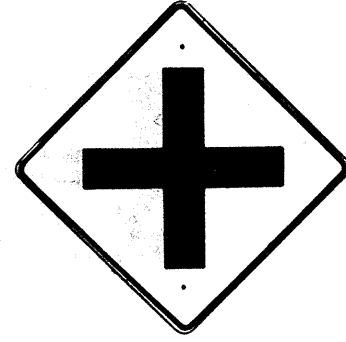
W1-5(R) 30"x30"  
W1-5(R)-A 48"x48"



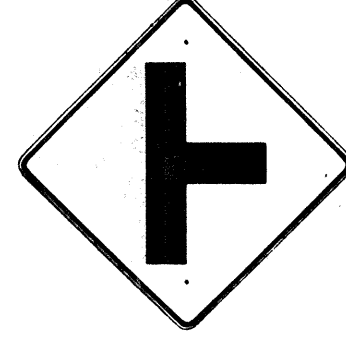
W1-6 48"x24"



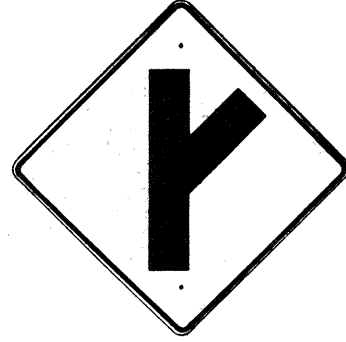
W1-7 48"x24"



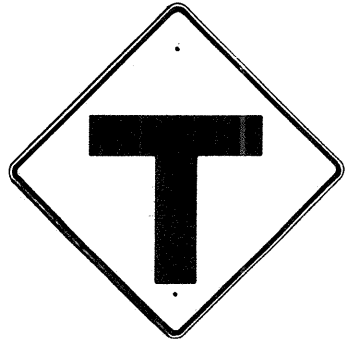
W2-1 30"x30"  
W2-1-A 48"x48"



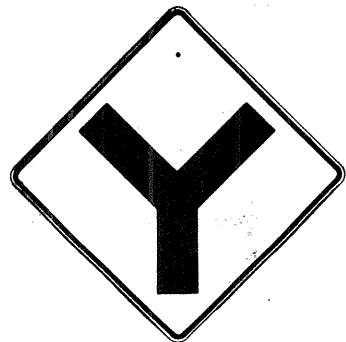
W2-2 30"x30"  
W2-2-A 48"x48"



W2-3(R) 30"x30"  
W2-3(R)-A 48"x48"



W2-4 30"x30"  
W2-4-A 48"x48"



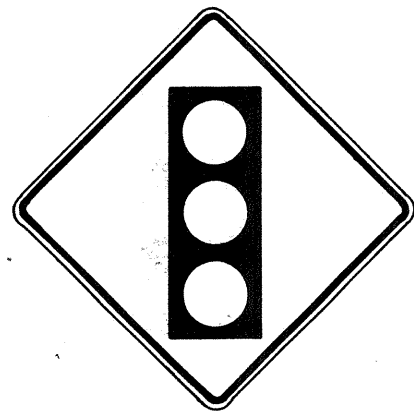
W2-5 30"x30"  
W2-5-A 48"x48"



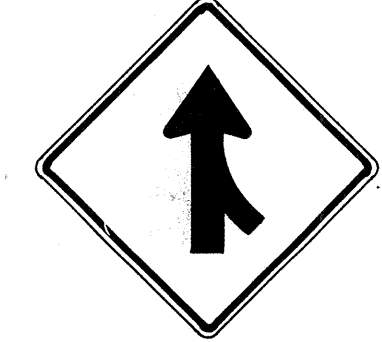
W3-1 30"x30"  
W3-1-A 36"x36"



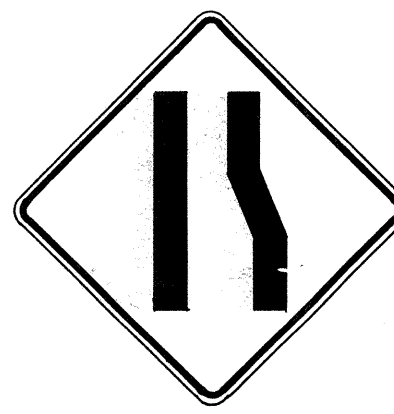
W3-2 30"x30"  
W3-2-A 36"x36"



W3-3 36"x36"  
24"x18"



W4-1(R) 30"x30"  
24"x18"  
W4-1(R)-A 48"x48"  
24"x18"



W4-2(R) 36"x36"  
W4-2(R)-A 48"x48"



W5-1 36"x36"



W5-2 30"x30"  
W5-2-A 36"x36"



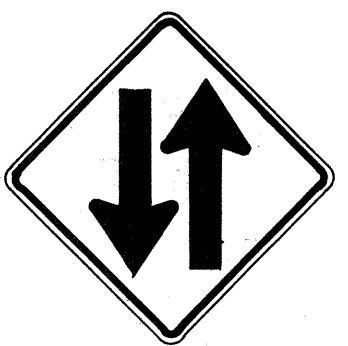
W5-3 36"x36"



W6-1 36"x36"  
24"x18"



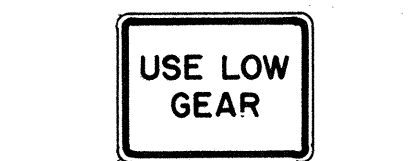
W6-2 36"x36"  
24"x18"



W6-3 30"x30"  
24"x18"  
W6-3-A 36"x36"  
24"x18"  
W6-3-B 48"x48"  
24"x18"



W7-1 30"x30"  
24"x18"  
W7-1-A 36"x36"  
24"x18"



W7-2 24"x18"



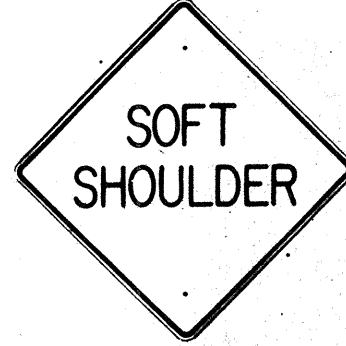
W8-1 30"x30"  
W8-1-A 36"x36"



W8-2 30"x30"  
W8-2-A 36"x36"



W8-3 30"x30"  
W8-3-A 36"x36"



W8-4 30"x30"  
W8-4-A 36"x36"



W8-5 30"x30"  
24"x18"  
W8-5-A 36"x36"  
24"x18"



W9-1(R) 30"x30"  
W9-1(R)-A 36"x36"  
W9-1(R)-B 48"x48"



W9-2(L) 36"x36"  
W9-2(L)-A 48"x48"



W10-1 36" Diameter



W11-1 30"x30"  
24"x18"  
W11-1-A 36"x36"  
24"x18"



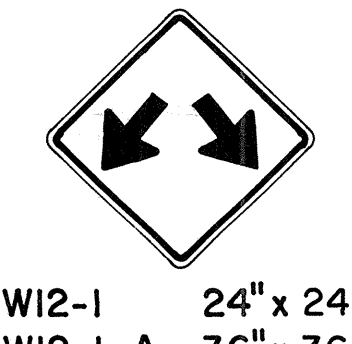
W11-2 30"x30"  
24"x18"  
W11-2-A 36"x36"  
24"x18"



W11-4 30"x30"  
24"x18"  
W11-4-A 36"x36"  
24"x18"



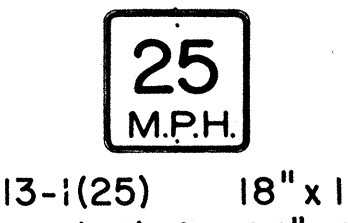
W11-5 30"x30"  
24"x18"  
W11-5-A 36"x36"  
24"x18"



W12-1 24"x24"  
W12-1-A 36"x36"  
W12-1-B 48"x48"



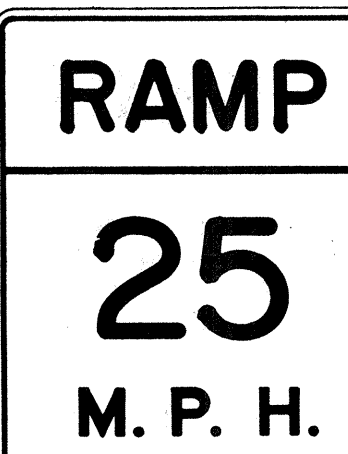
W12-2(12'-6") 36"x36"  
24"x18"



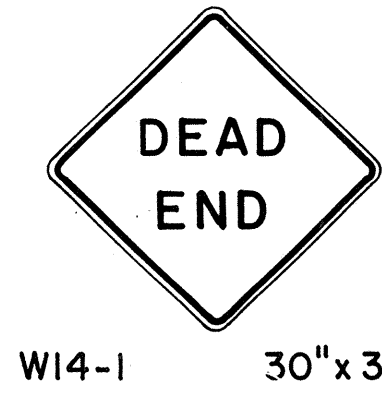
W13-1(25) 18"x18"  
W13-1(25)-A 24"x24"



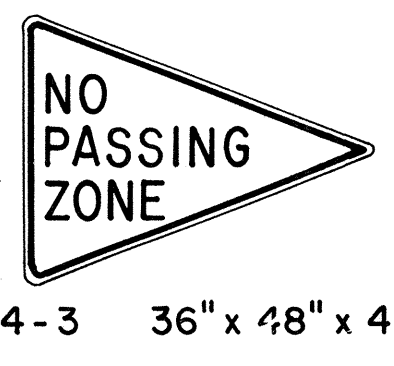
W13-2(25) 48"x60"



W13-3(25) 48"x60"



W14-1 30"x30"



W14-3 36"x48"x48"

### GENERAL NOTES

- Sign details shall conform to the FHWA publications "Manual on Uniform Traffic Control Devices for Streets and Highways," 1971, and "Standard Highway Signs," 1972, and as amended.
- All warning signs shall be reflectorized unless otherwise specified.
- All warning signs shall have 3/8" bolt holes drilled at appropriate locations.
- Numerals in ( ) indicates numerals to be inserted for sign message. (R) or (L) indicates right or left.
- Signs prefixed with "CW" on the plans shall indicate orange and black construction signs, and shall be reflectorized.

APPROVAL RECOMMENDED:  
TRAFFIC ENGINEER

3/17/72  
DATE

APPROVED:  
ASSISTANT CHIEF, ENGINEERING

3-20-72  
DATE

NO.	REVISION	APPROVED BY	DATE
1	Supersedes Sht. DT 102 Approved 12-30-69	H.T.	3/20/72
2	Revised General Note 1	H.T.	10/16/74
3	Revised General Note 5	MA	9-16-75
4	Revised General Note 5	H.T.	9-14-76
5	Added Note 1	H.T.	11-9-79

STATE OF HAWAII  
DEPARTMENT OF TRANSPORTATION  
HIGHWAYS DIVISION

### STANDARD DETAILS WARNING SIGNS

NOT TO SCALE

SHEET No. 4 OF 8 SHEETS DT 102

DESIGNED BY	DATE
DRAWN BY	*****
CHECKED BY	
NOTED BY	
ORIGINAL PLAN	
NO.	

FED. ROAD DIST. NO.	STATE	FED. AID PROJ. NO.	FISCAL YEAR	SHEET NO.	TOTAL SHEETS
HAWAII	HAW.	111M-01-82M, 124H-01-82M, 125D-01-82M, 126L-01-82M	1981	12	15



CW20-1a 48" x 48"



CW20-2d 48" x 48"



CW20-3b 48" x 48"



CW20-4d 48" x 48"



CW20-5d(L) 48" x 48"



CW20-7c 48" x 48"



CW21-1 30" x 30"



CW21-2 30" x 30"



CW21-3 36" x 36"



CW21-4 36" x 36"



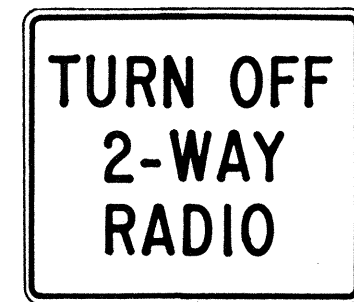
CW21-5 30" x 30"



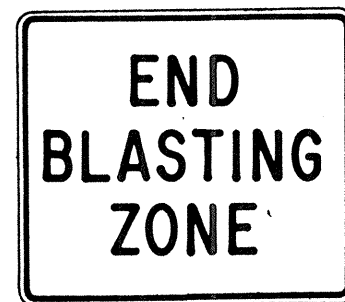
CW21-6 30" x 30"



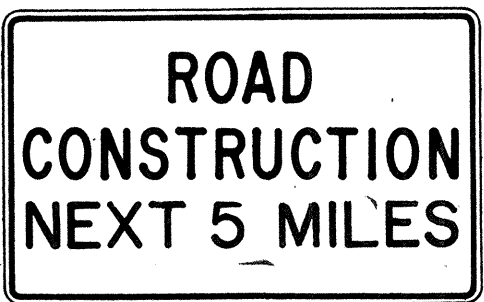
CW22-1b 48" x 48"



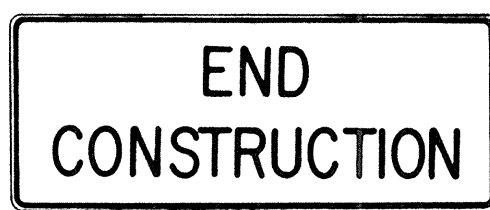
CW22-2 42" x 36"



CW22-3 42" x 36"



CG20-1(5) 60" x 36"



CG20-2 60" x 24"



CM4-9(R) 30" x 24"



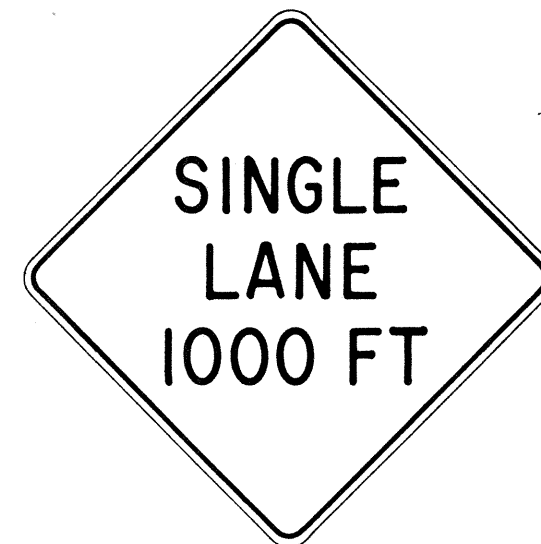
CM4-10(R) 48" x 18"



CG20-4 36" x 18"



CW23-1 36" x 36"



CW23-2b 48" x 48"



CW23-3(R) 48" x 48"

#### GENERAL NOTES

- Sign details shall conform to the FHWA publications "Manual on Uniform Traffic Control Devices for Streets and Highways," 1971, and "Standard Highway Signs," 1972, and as amended.
- All construction signs shall be reflectorized.
- All construction signs shall have 3/8" bolt holes drilled at appropriate locations.
- Numerals in ( ) indicates numerals to be inserted for sign message. (R) or (L) indicates right or left.
- For "CW" series signs, suffixes a,b,c and d are as follows:  
a-1500 FT, b-1000 FT,  
c-500 FT and d-AHEAD.

NO.	REVISION	APPROVED BY	DATE
1	Supersedes Sht. DT 104 Approved 12-30-69	H.T.	3/23/72
2	Revised General Note 1	H.T.	10/16/74
3	Revised General Note 2	M.H.	9-16-75
4	Revised General Note 2 and sign CG20-1(5)	H.T.	9-14-76

APPROVAL RECOMMENDED:  
  
TRAFFIC ENGINEER 3/21/72  
DATE

APPROVED:  
  
ASSISTANT CHIEF, ENGINEERING 3/23/72  
DATE

STATE OF HAWAII  
DEPARTMENT OF TRANSPORTATION  
HIGHWAYS DIVISION

**STANDARD DETAILS**  
**CONSTRUCTION SIGNS**

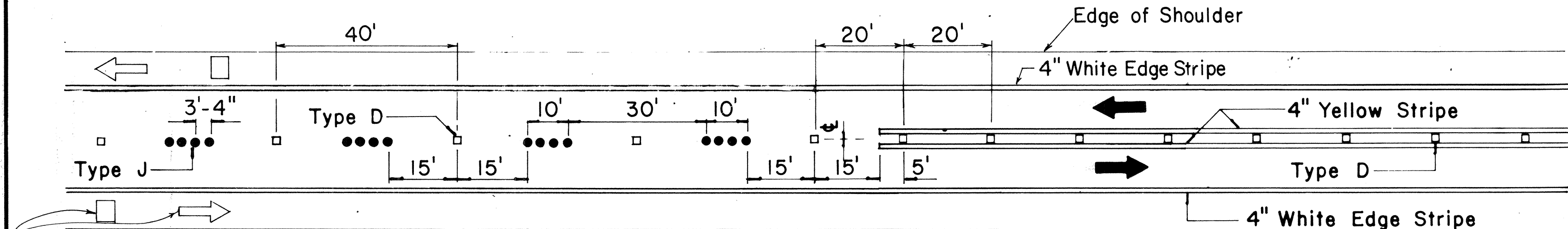
NOT TO SCALE

SHEET No. 5 OF 8 SHEETS DT 104

DESIGNED BY	DATE
DRAWN BY	
CHECKED BY	
NOTED BY	
ORIGINAL FILED	
NO.	

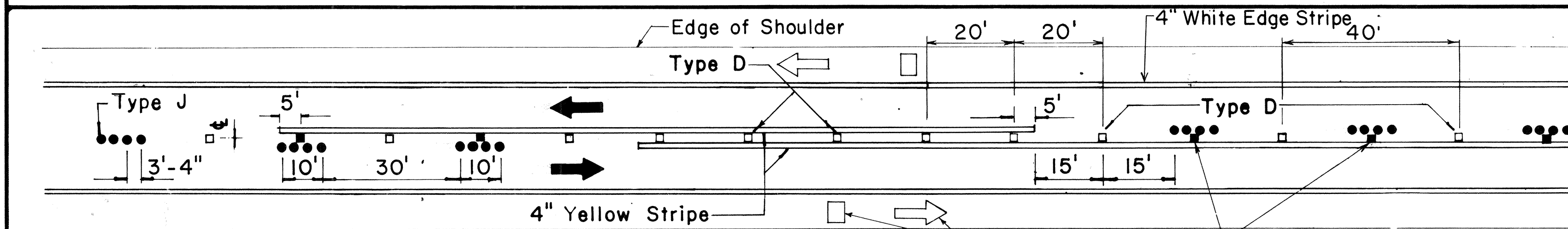


FED. ROAD DIST. NO.	STATE	PROJ. NO.	FISCAL YEAR	SHEET NO.	TOTAL SHEETS
HAWAII	HAW.	11M-01-82M, 19H-01-82M, 19D-01-82M, 19L-01-82M	1981	13	15



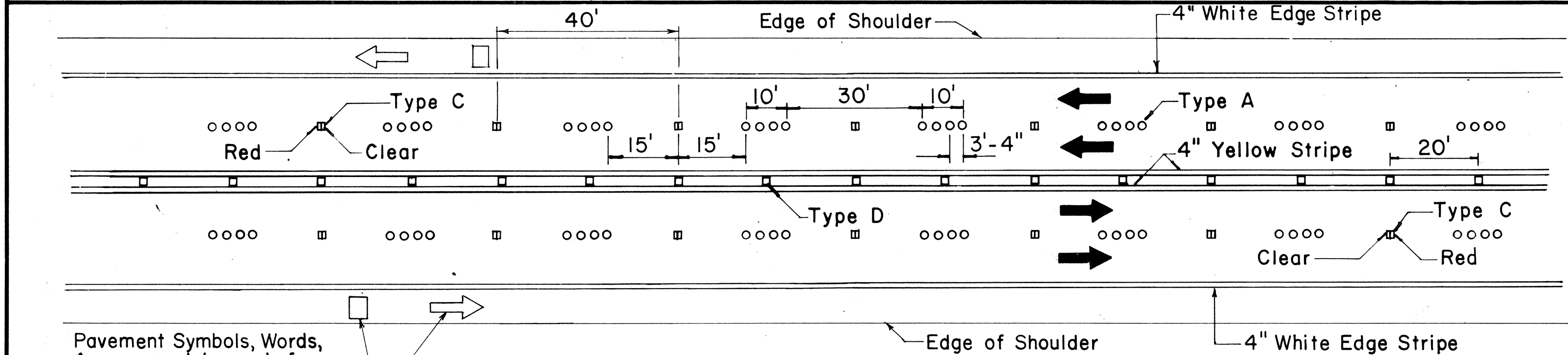
Pavement Symbols, Words, Arrows, and Legends for Bike Route as Required on Plans.

## PASSING PERMITTED AND PASSING PROHIBITED

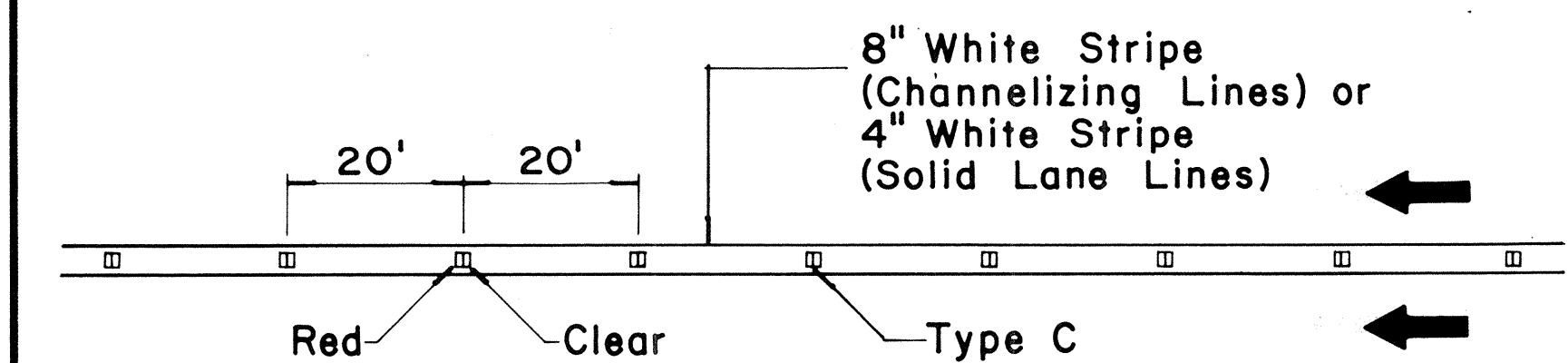
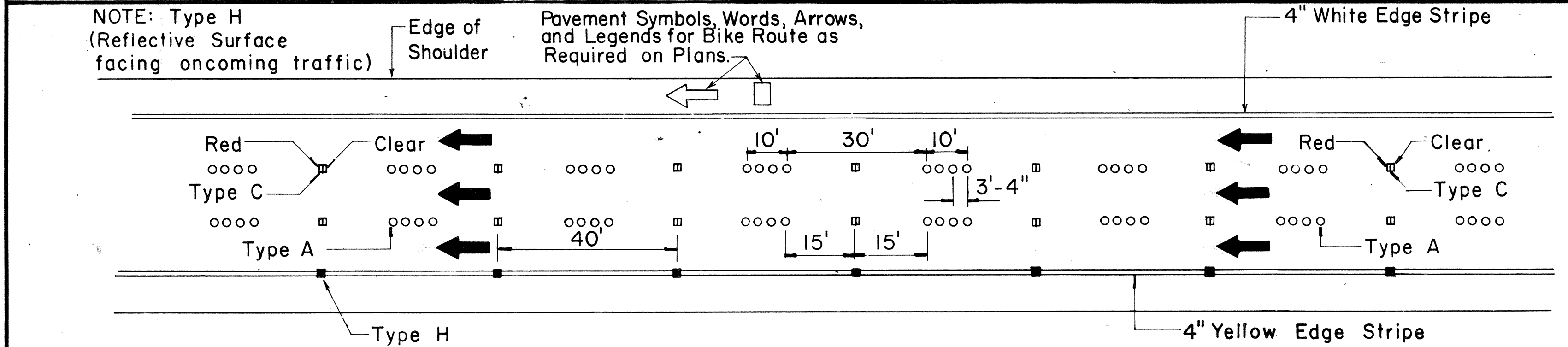


Pavement Symbols, Words, Arrows, and Legends for Bike Route as Required on Plans.

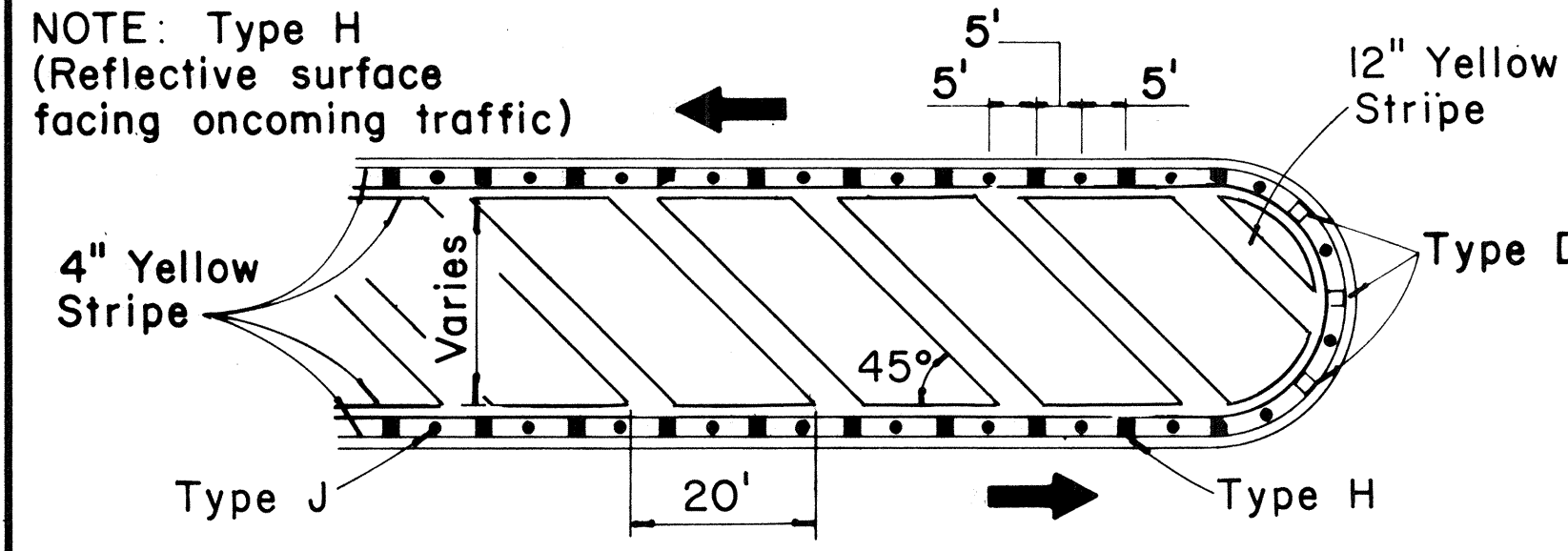
## PASSING PROHIBITED ZONES



Pavement Symbols, Words, Arrows, and Legends for Bike Route as Required on Plans.



## CHANNELIZING LINES OR SOLID LANE LINES



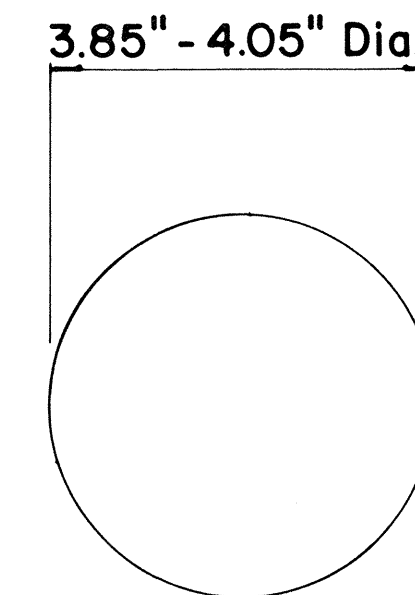
## MEDIAN NOSE DELINEATION

TWO - LANE

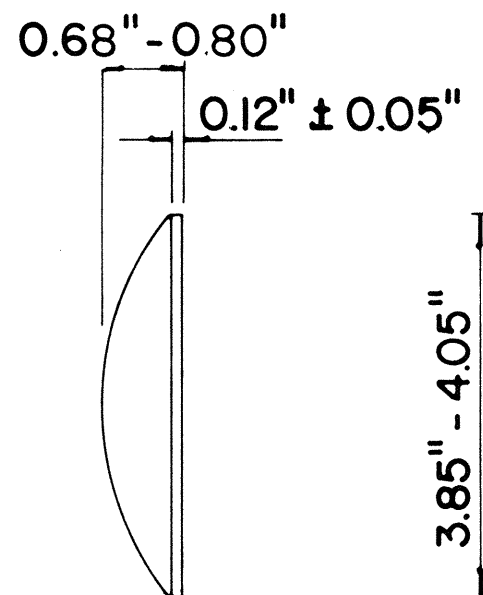
MULTI - LANE

DIVIDED HIGHWAY AND FREEWAY

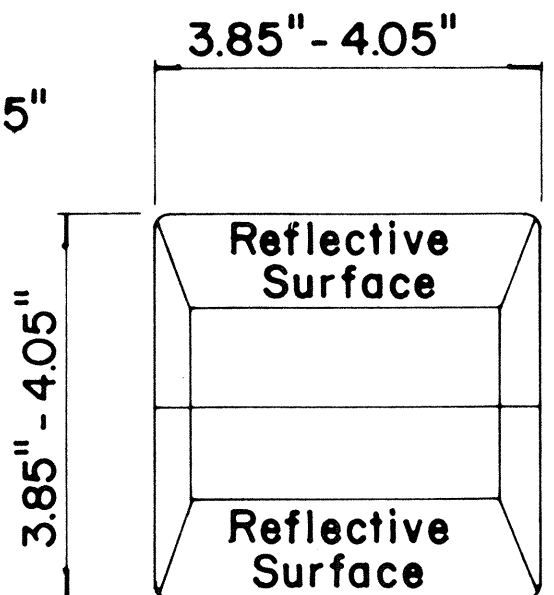
MISCELLANEOUS



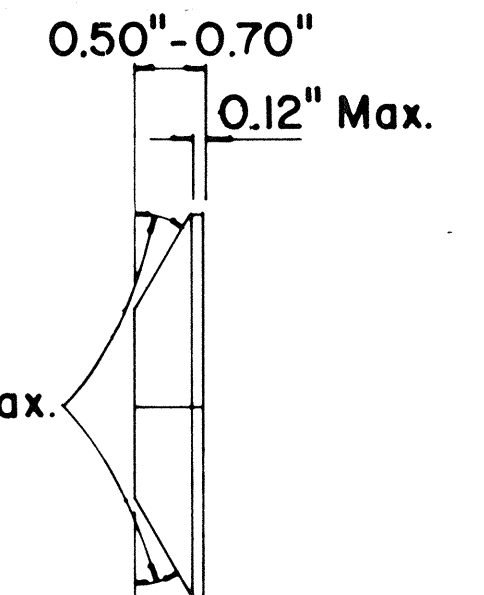
**TYPE A**  
NON-REFLECTIVE WHITE MARKER



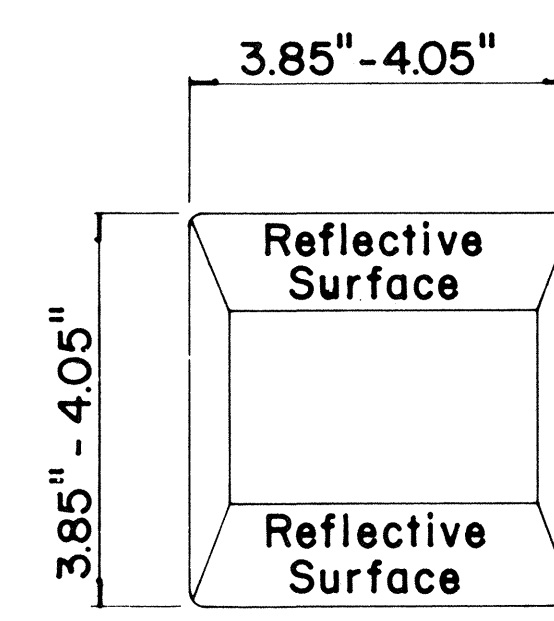
**TYPE J**  
NON-REFLECTIVE YELLOW MARKER



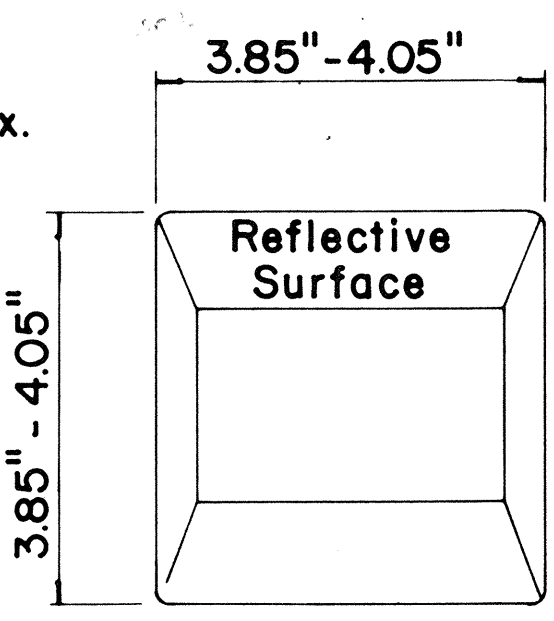
**TYPE C**  
RED-CLEAR REFLECTIVE MARKER



**TYPE H**  
ONE-WAY YELLOW REFLECTIVE MARKER



**TYPE D**  
TWO-WAY YELLOW REFLECTIVE MARKER



## GENERAL NOTES

- Pavement marking and striping shall conform to the latest "Manual on Uniform Traffic Control Devices for Streets and Highways," and as amended.
- Layout and installation of pavement marking and striping shall be done by the Contractor. The Contractor shall check the layouts with the Engineer prior to performing work.

## LEGEND

- Type A
- Type C
- Type D
- Type H
- Type J

APPROVAL RECOMMENDED:

*Erich Tanaka* 7/21/78  
TRAFFIC ENGINEER DATE

APPROVED:

*Harbert J. Zekich* 1/24/78  
ASSISTANT CHIEF, ENGINEERING DATE

No.	REVISION	APPROVED BY	DATE
1	Supersedes DT 300 approved 11/18/71.	H.C.	1/24/78
2	Delete Type A Markers from Bike Route Delineation.	H.C.	10/15/79

STATE OF HAWAII  
DEPARTMENT OF TRANSPORTATION  
HIGHWAYS DIVISION

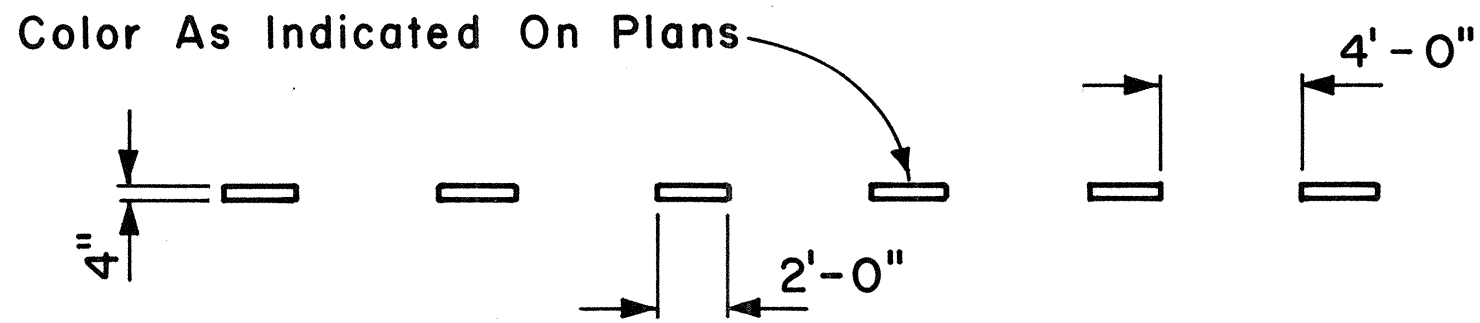
**STANDARD DETAILS**  
**RAISED PAVEMENT MARKERS**  
**AND STRIPING**

Not to Scale July 1978  
SHEET No. 6 OF 8 SHEETS DT 300

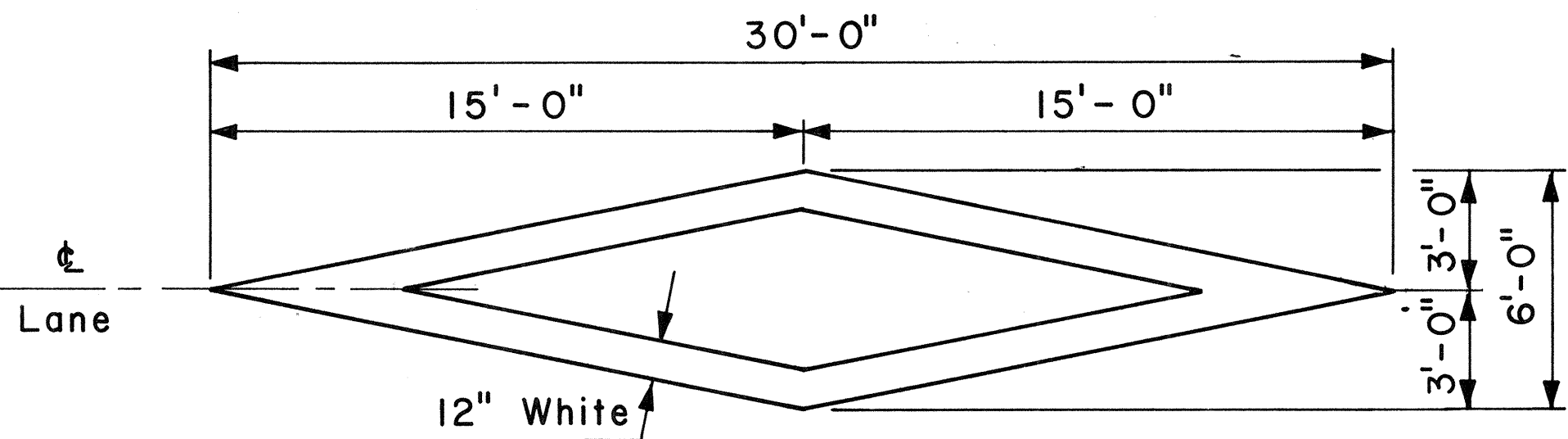
FED. ROAD DIST. NO.	STATE	PROJ. NO.	FISCAL YEAR	SHEET NO.	TOTAL SHEETS
HAWAII	HAW.	11M-01-82M, 12H-01-82M, 13D-01-82M, 14L-01-82M	1981	14	15

GENERAL NOTES:

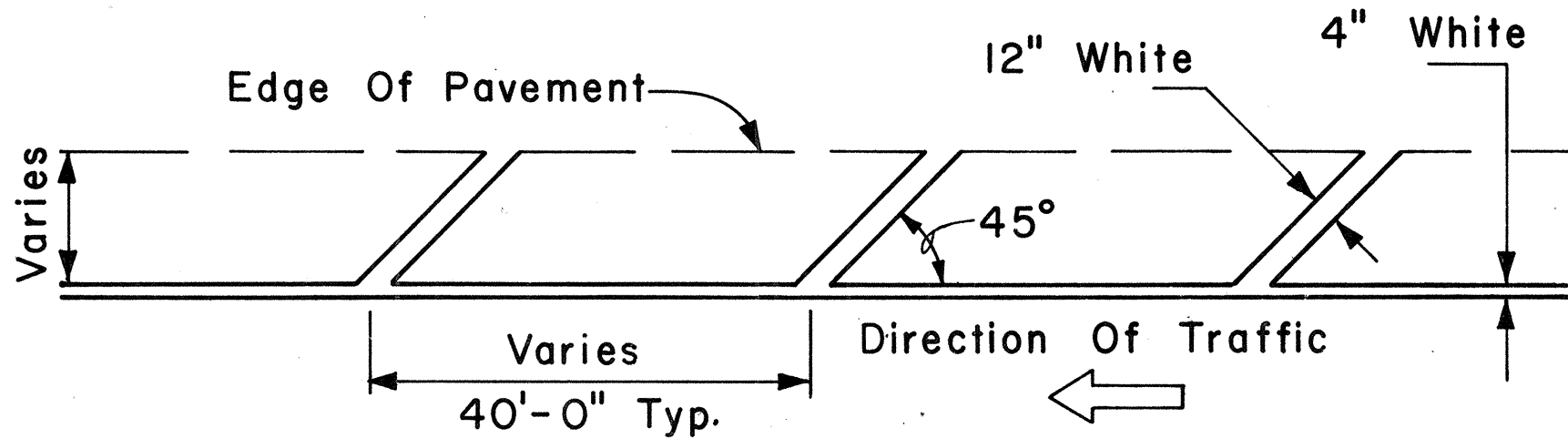
1. Pavement marking and striping shall conform to the latest edition of the "Manual on Uniform Traffic Control Devices for Streets and Highways," by the FHWA, and as amended.
2. Layout of pavement markings and striping shall be done by the Contractor. The Contractor shall check layout of markings and striping with the Engineer prior to performing work.
3. For additional pavement marking details, see sheet DT 300.



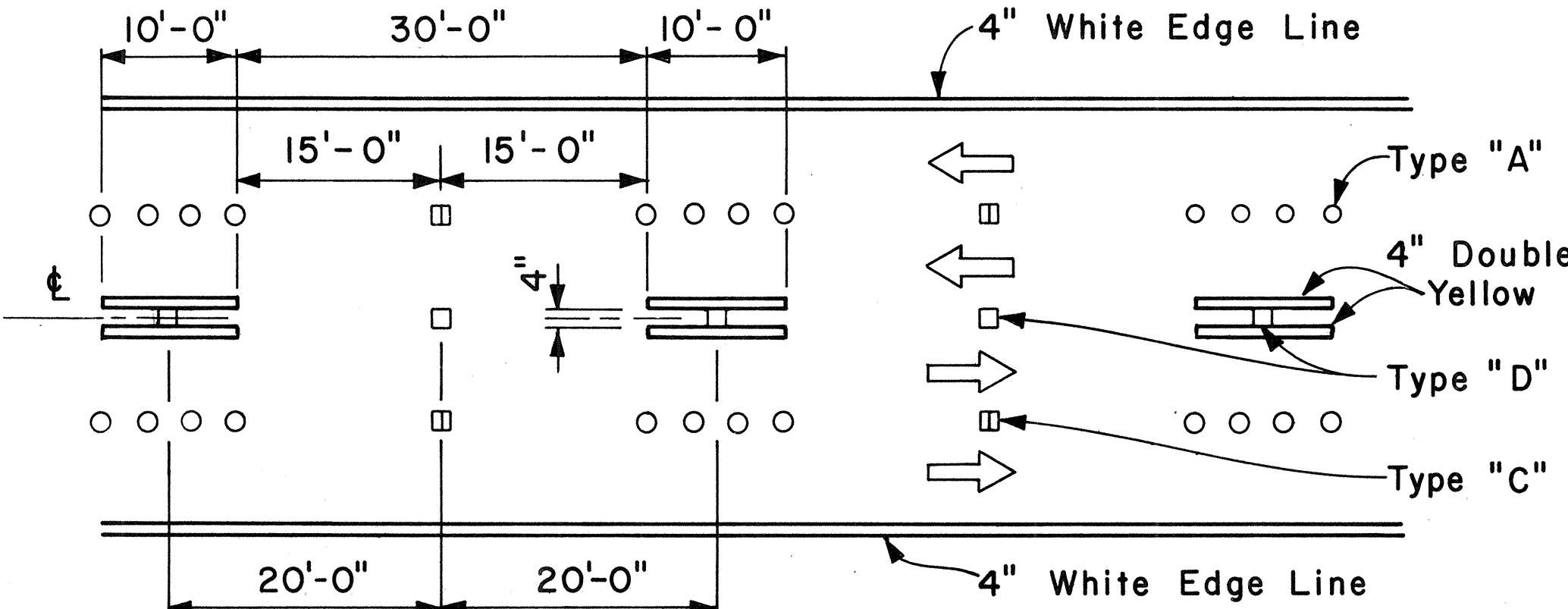
4" GUIDE LINE



PAVEMENT DIAMOND

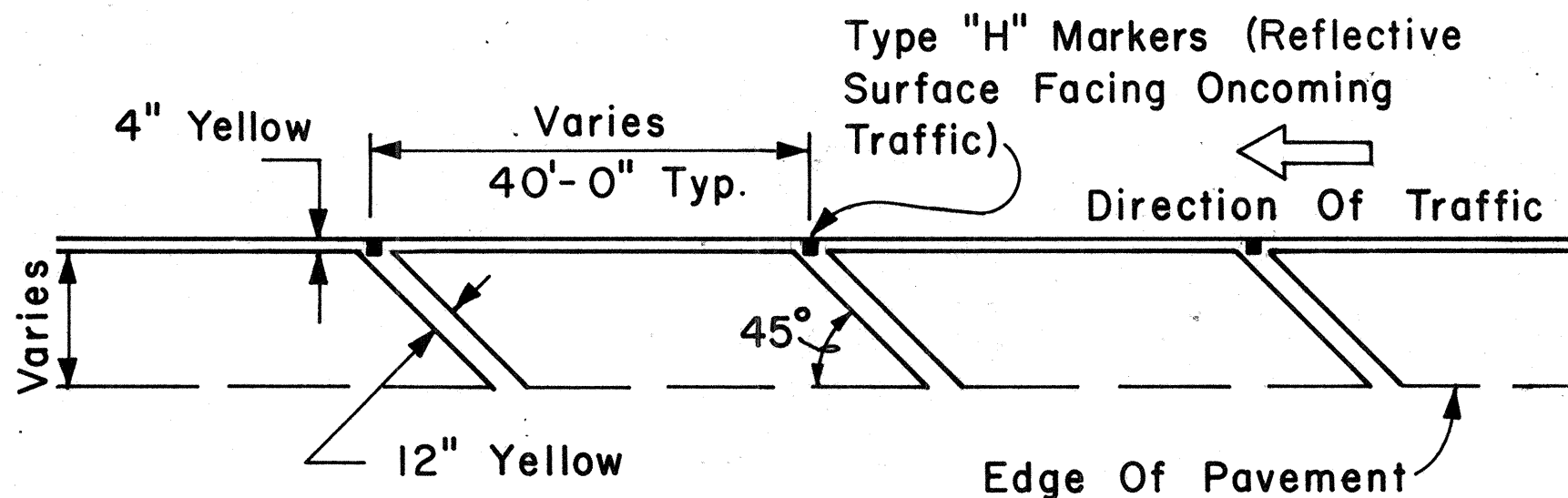


TRANSVERSE RIGHT SHOULDER MARKING

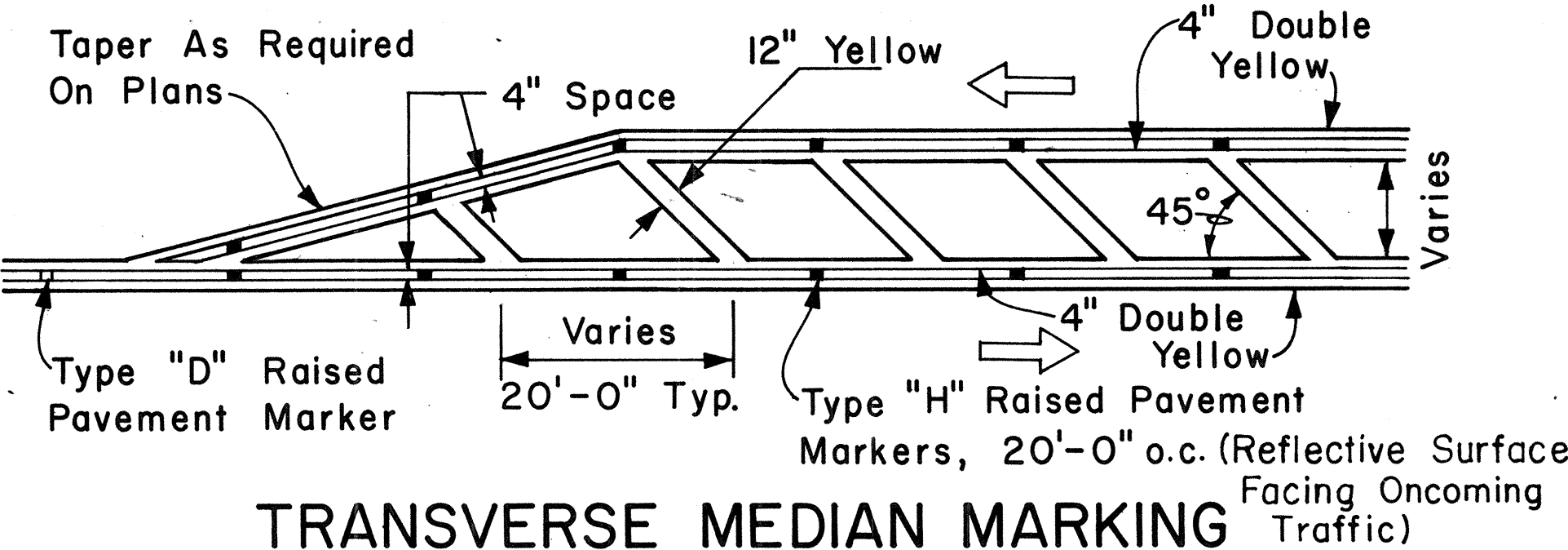


NOTE: Traffic Cone Usage Required.

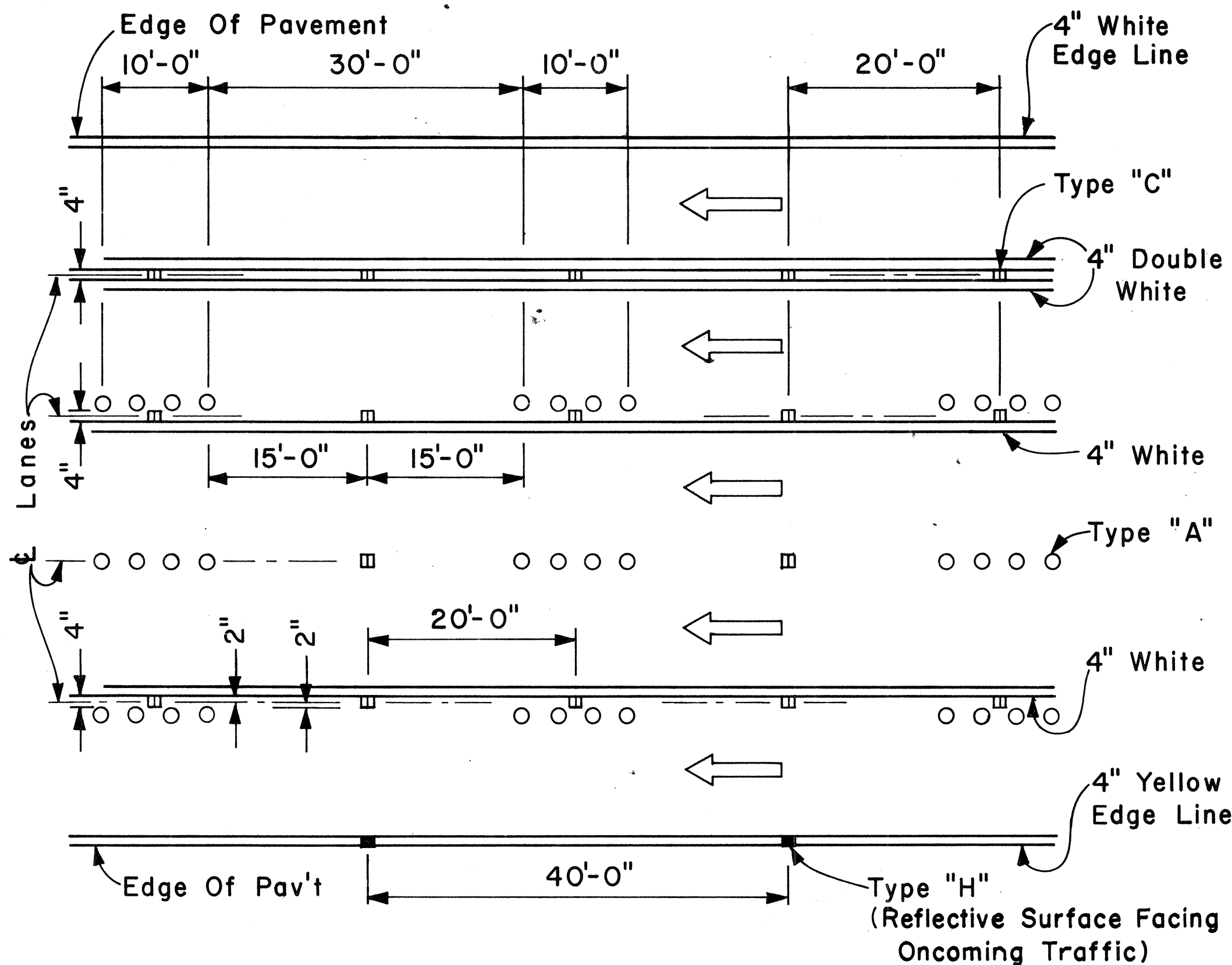
MULTI-LANE REVERSIBLE LANES



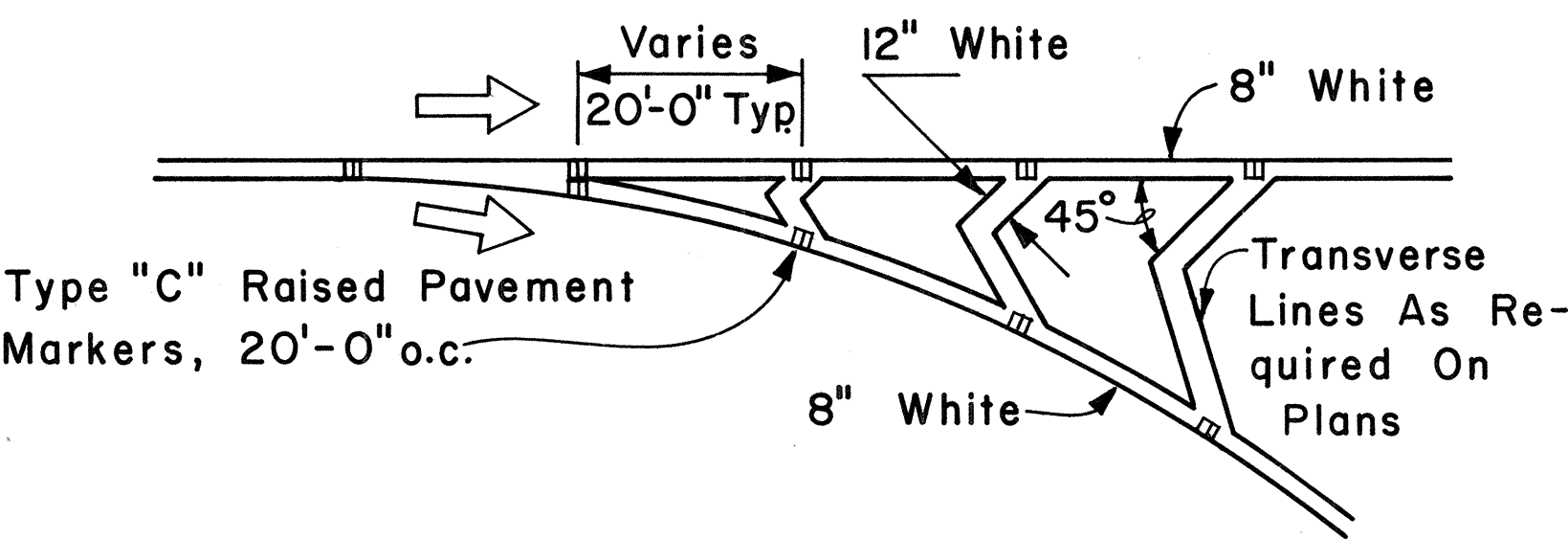
TRANSVERSE LEFT SHOULDER MARKING



TRANSVERSE MEDIAN MARKING



MULTI-LANE LANE CHANGE RESTRICTION ZONES



CHANNELIZING ISLAND

APPROVAL RECOMMENDED: *E. Tanaka* 5/2/78  
TRAFFIC ENGINEER DATE

APPROVED: *Robert J. Zaleski* 5/3/78  
ASSISTANT CHIEF, ENGINEERING DATE

NO.	REVISION	APPROVED BY	DATE

STATE OF HAWAII  
DEPARTMENT OF TRANSPORTATION  
HIGHWAYS DIVISION  
STANDARD DETAILS  
MISCELLANEOUS  
PAVEMENT MARKINGS

Scale: Not to Scale Date: April, 1978  
SHEET NO. 7 OF 8 SHEETS DT 302

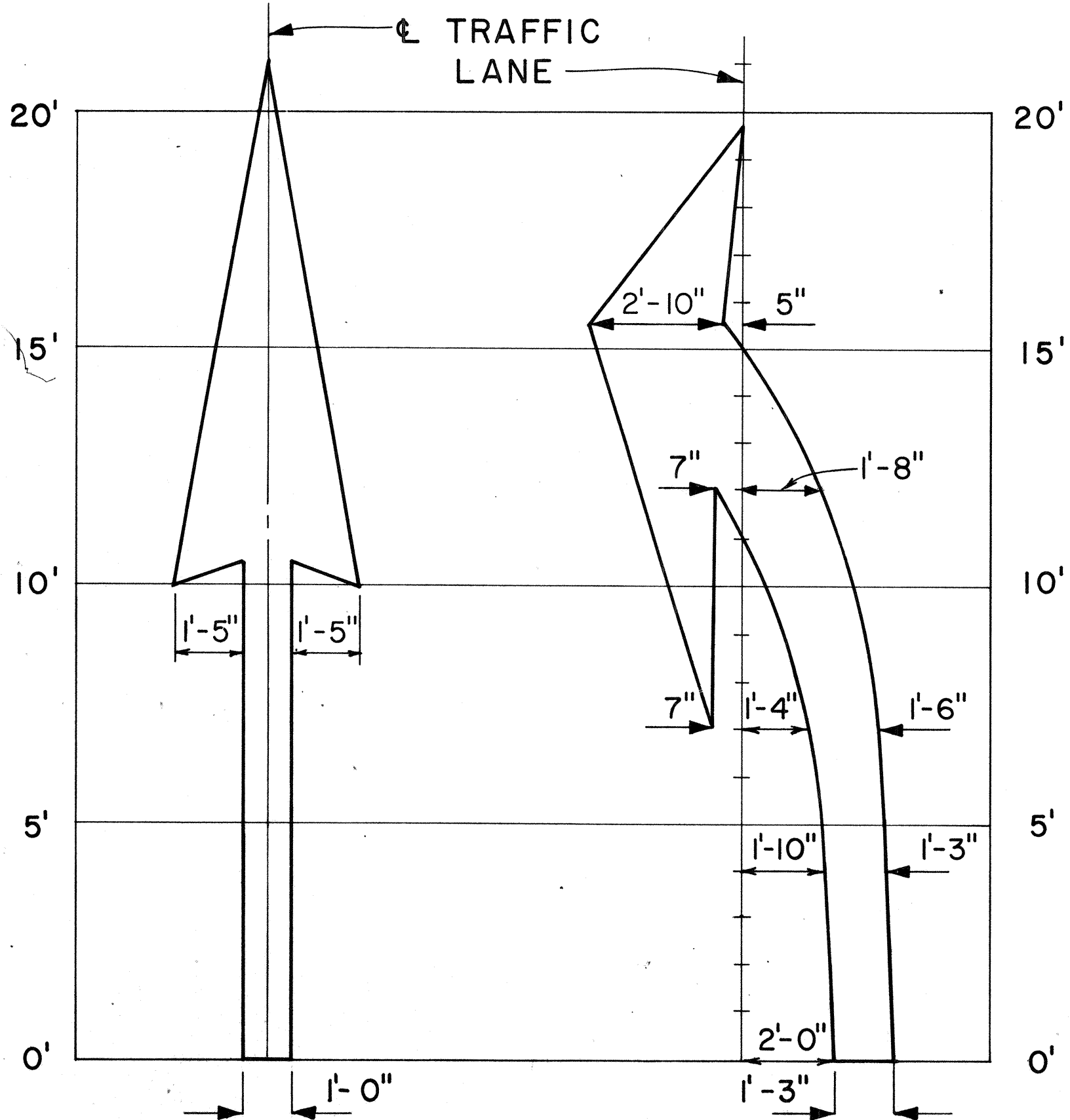
SURVEY PLOTTED BY	DATE
DRAWN BY	
CHECKED BY	
NOTED BY	
QUANTITIES BY	
CHECKED BY	
ORIGINAL PLAN	
NOTE BOOK	
NO.	



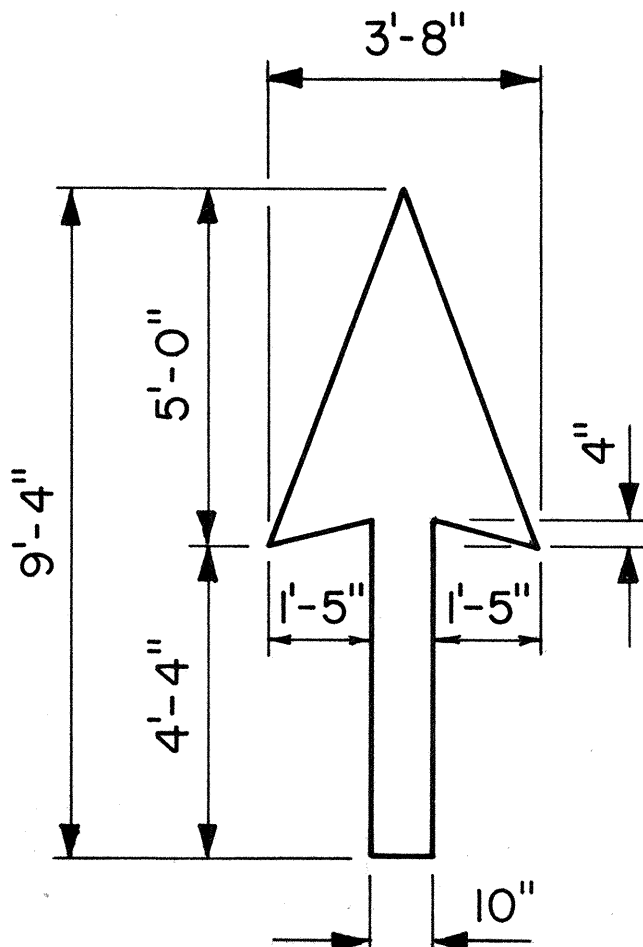
FED. ROAD DIST. NO.	STATE	PROJ. NO.	FISCAL YEAR	SHEET NO.	TOTAL SHEETS
HAWAII	HAW.	11M-01-82M, 18H-01-82M, 19D-01-82M, 19L-01-82M	1981	15	15

GENERAL NOTES:

- Pavement marking and striping shall conform to the latest edition of the "Manual on Uniform Traffic Control Devices for Streets and Highways," by the FHWA, and as amended.
- Layout of pavement markings and striping shall be done by the Contractor. The Contractor shall check layout of markings and striping with the Engineer prior to performing work.
- For additional pavement marking details, see sheet DT 300.



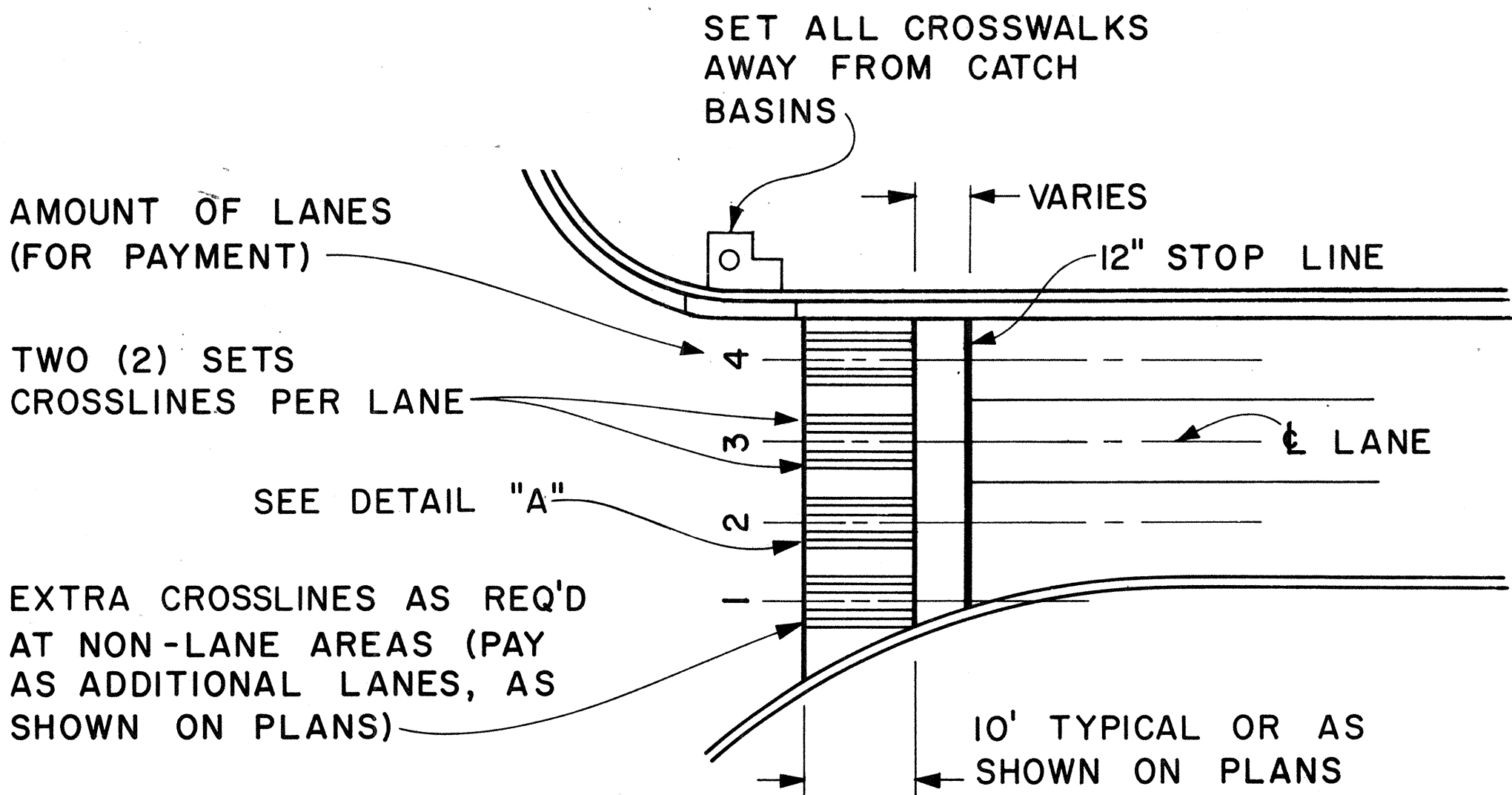
ELONGATED



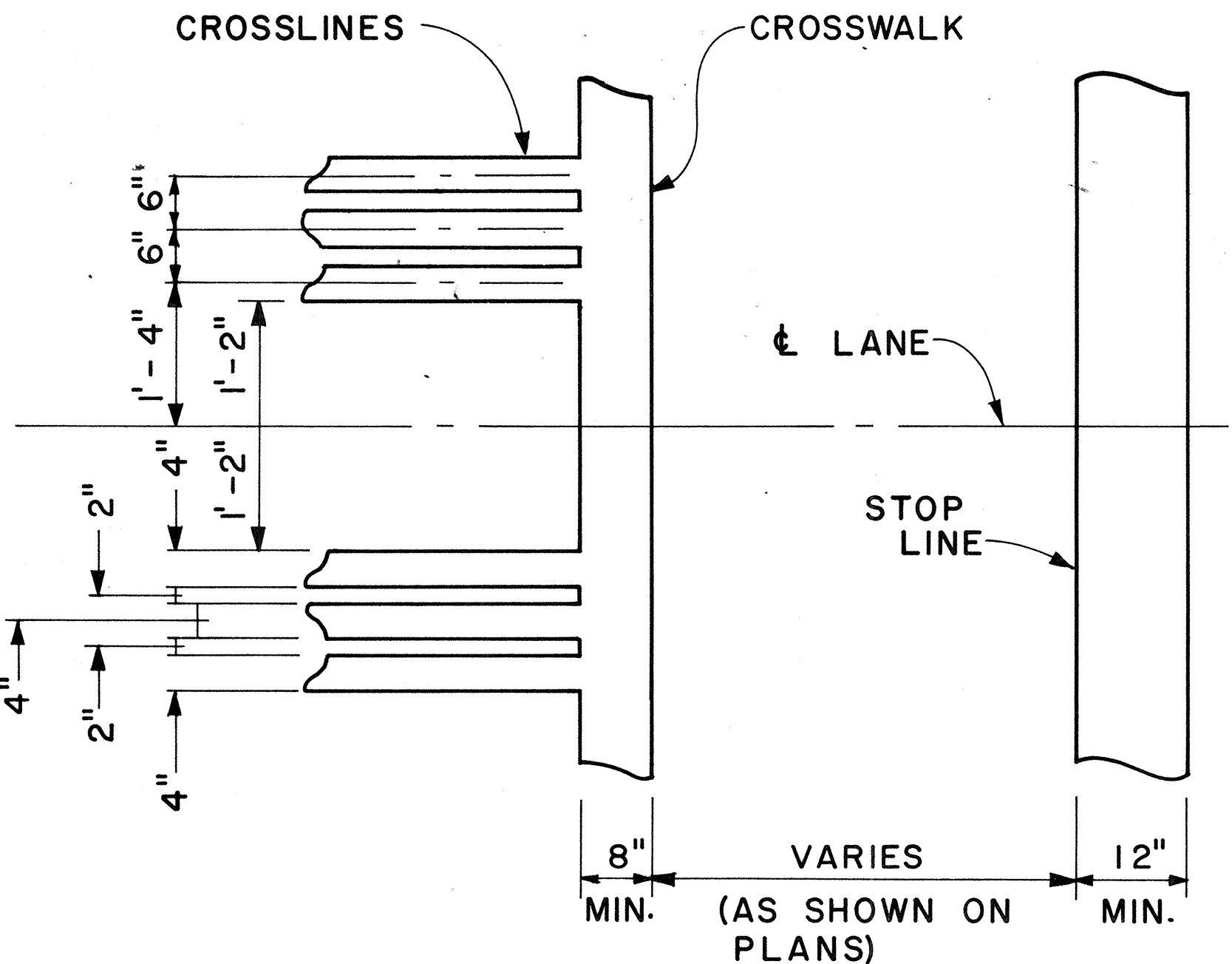
STANDARD

PAVEMENT ARROWS

Scale: 3/8" = 1'



PLAN



DETAIL "A"

CROSSWALK & STOP LINE

Scale: Not to Scale

APPROVAL RECOMMENDED:  
*Erica Tanaka* 5/2/78  
 TRAFFIC ENGINEER DATE

APPROVED:  
*Harold S. Sakai* 5/3/78  
 ASSISTANT CHIEF, ENGINEERING DATE

NO.	REVISION	APPROVED BY	DATE

STATE OF HAWAII  
DEPARTMENT OF TRANSPORTATION  
HIGHWAYS DIVISION

STANDARD DETAILS

MISCELLANEOUS  
PAVEMENT MARKINGS

Scale: As Shown Date: March, 1978  
SHEET NO. 8 OF 8 SHEETS DT 306